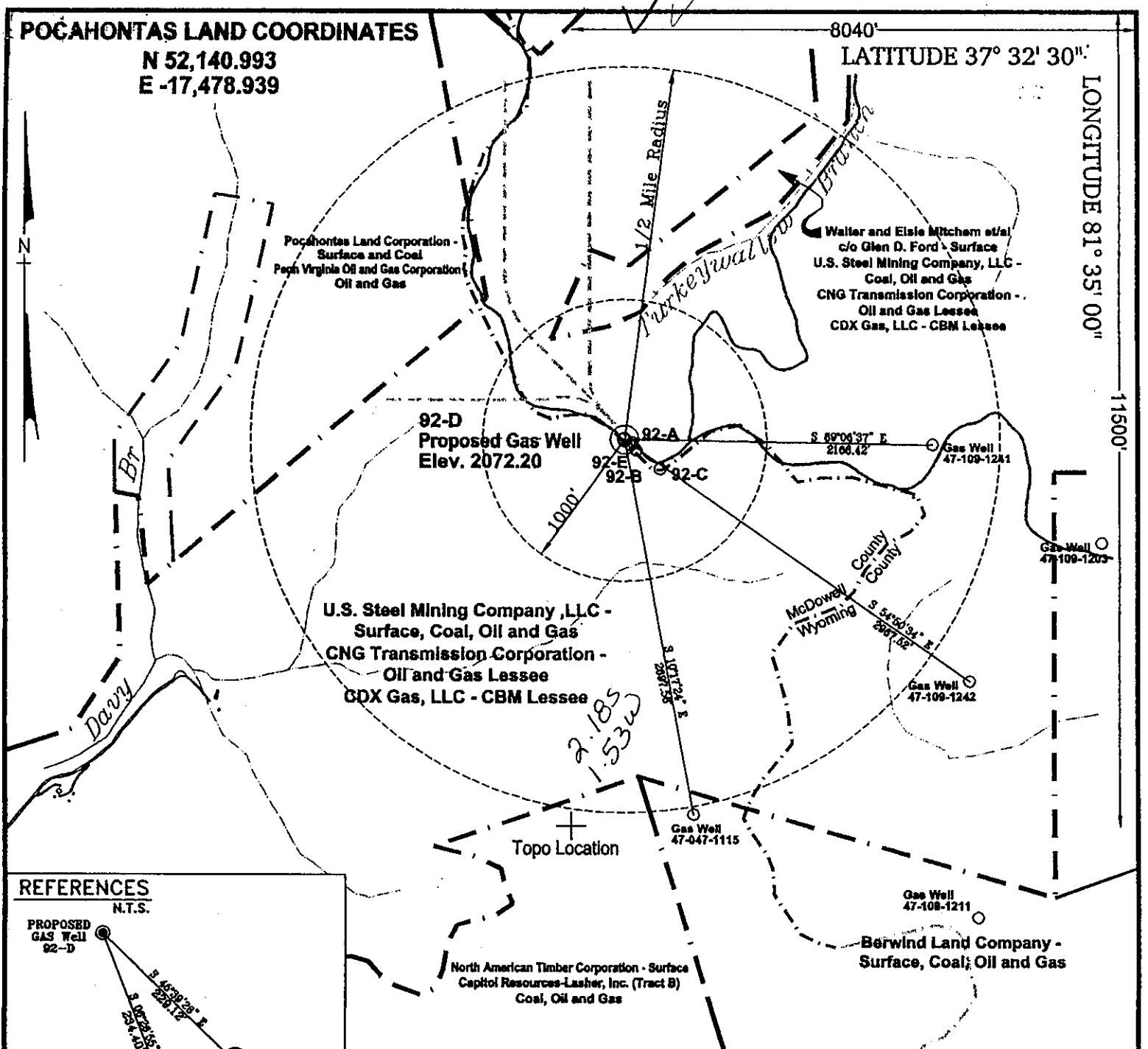


POCAHONTAS LAND COORDINATES

N 52,140.993
E -17,478.939

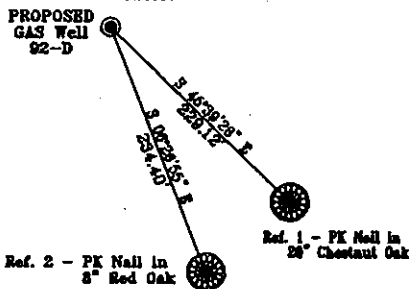
8040' LATITUDE 37° 32' 30"

LONGITUDE 81° 35' 00"



REFERENCES

N.T.S.



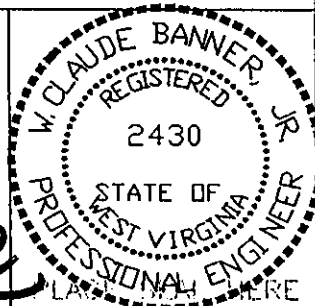
Notes:

No known domestic water supplies within 1000 feet.
(+) Denotes location of well on USGS map.

FILE No. CDXGAS
DRAWING NAME \CDXGAS\PLAT
Drawing Number 12-7-00-4SP
SCALE 1" = 1000'
MINIMUM DEGREE OF ACCURACY 1 : 2500
PROVEN SOURCE OF ELEVATION GPS - GLOBAL POSITIONING SYSTEM

I THE UNDERSIGNED, HEREBY CERTIFY THAT THIS PLAT IS CORRECT TO THE BEST OF MY KNOWLEDGE AND BELIEF AND SHOWS ALL THE INFORMATION REQUIRED BY LAW AND THE REGULATIONS ISSUED AND PRESCRIBED BY THE DEPARTMENT OF MINES.

(SIGNED) *W. Claude Banner*
R.P.E. 2430 R.P.S. 2430



**STATE OF WEST VIRGINIA
DIVISION OF ENVIRONMENTAL PROTECTION
OFFICE OF OIL AND GAS
NITRO, WV**

DATE DECEMBER 11, 2000
OPERATOR'S WELL No. 92-D
API WELL No. 47-109-01979C
STATE COUNTY PERMIT

WELL TYPE: OIL GAS CBM LIQUID INJECTION WASTE DISPOSAL
(IF "GAS") PRODUCTION X STORAGE DEEP SHALLOW
LOCATION: ELEVATION 2072.20 WATER SHED TURKEYALLOW BRANCH OF INDIAN CREEK; UNNAMED TRIBUTARY OF DAVY BRANCH OF TUG FORK
DISTRICT CENTER COUNTY WYOMING
QUADRANGLE PINEVILLE, WV

SURFACE OWNER U.S. STEEL MINING COMPANY, LLC ACREAGE 37977.66
CBM ROYALTY OWNER U.S. STEEL MINING COMPANY, LLC LEASE ACREAGE 4498.52

horizontal well

LEASE No. _____

PROPOSED WORK: DRILL X CONVERT DRILL DEEPER REDRILL FRACTURE OR STIMULATE PLUG OFF OLD FORMATION PERFORATE NEW FORMATION OTHER PHYSICAL CHANGE IN WELL (SPECIFY)

PLUG AND ABANDON CLEAN OUT AND REPLUG
TARGET FORMATION POCAHONTAS NO. 3 SEAM & PENN COALS ESTIMATED DEPTH 1349'
WELL OPERATOR CDX GAS, LLC VICE PRESIDENT-OPERATIONS JOSEPH ZUPANICK
ADDRESS P.O. BOX 609 ADDRESS P.O. BOX 609
PINEVILLE, WV 24874 PINEVILLE, WV 24874

6-6 272

JAN 12 2001

WYO 1979C

State of West Virginia
Division of Environmental Protection
Section of Oil & Gas

Reviewed ABC

Well Operator's Report of Well Work

Farm name: U.S. Steel Mining Company

Operator Well No: 92-D

Location: Elevation: 2071.43

Quadrangle: Pineville

District: Center

County: WYOMING

Latitude: 11500 Feet South of 37 Deg. 32 Min. 30 Sec.
Longitude: 8040 Feet West of 81 Deg. 35 Min. 00 Sec.

RECEIVED
Office of Oil & Gas
Permitting

OCT 11 2002

WV Department of
Environmental Protection

Company: CDX Gas, LLC
P.O. Box 609
Pineville, WV 24874

Agent: JOSEPH A. ZUPANICK

Inspector: Ronnie Scott
Permit Issued: 1/11/01
Well Work commenced: 5-19-01
Well Work completed: 6-23-02
Verbal plugging
Permission granted on:
Rotary x Cable _____ Rig
Total depth (ft) 1428.8' TVD
Fresh water depths (ft) N/A
Salt water depths (ft) N/A
Is coal being mined in the area (Y/N)? Y
Coal depths (ft): 575', 595', 682', 948', 1232, 1331'

Casing & Tubing Size	Used in Drilling	Left in Well	Cement Fill up
13 3/8"	25'	25'	Surface
9 5/8"	255'	255'	Surface
7"	1177'	1177'	Surface

OPEN FLOW DATA

Producing formation Pocahontas No. 3 Seam

Gas: Initial open flow N/A Mcf/d
Final open flow N/A Mcf/d

Oil: Pay zone depth (ft) 1331'
Initial open flow _____ Bbl/d
Final open flow _____ Bbl/d

Time of open flow between initial and final tests: _____ hours

Static rock pressure _____ psig (surface pressure) after _____ hours

Second Producing formation _____

Gas: Initial open flow _____ Mcf/d
Final open flow _____ Mcf/d

Oil: Pay zone depth (ft) _____
Initial open flow _____ Bbl/d
Final open flow _____ Bbl/d

Time of open flow between initial and final tests: _____ hours

Static rock pressure _____ psig (surface pressure) after _____ hours

Note: ON BACK OF THIS FORM, PUT THE FOLLOWING: 1) DETAILS OF PERFORATED INTERVALS, FRACTURING OR STIMULATING, PHYSICAL CHANGE, ETC. 2) THE WELL LOG WHICH IS A SYSTEMATICK DETAILED GEOLOGICAL RECORD OF ALL FORMATIONS, INCLUDING COAL ENCOUNTERED BY THE WELLBORE.

For: Steven Pauley
CDX Gas, LLC
By: Steven Pauley
Date: 10-8-02

OCT 25 2002

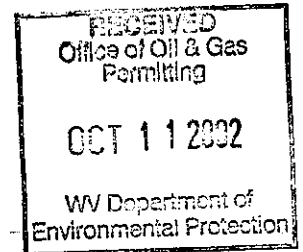
WYO 1979 C

Details of Perforated Intervals, Fracturing or Stimulation, Physical Change, Etc.

N/A

Well Log & Geologic Record - Depths from K.B.

Formation	Top	Bottom
Overburden	0	7
Sandy Shale	7	270
Shale	270	365
Sandy Shale	365	397
Shale	397	410
Sandy Shale	410	433
Shale	433	456
Sandy Shale	456	463
Shale	463	480
Sandy Shale	480	525
Shale	525	543
Sandy Shale	543	560
Shale	560	575
Coal	575	577
Shale	577	595
Coal	595	597
Shale	597	615
Sandy Shale	615	669
Shale	669	672
Sandy Shale	672	679
Shale	679	682
Coal	682	685
Sandy Shale	685	724
Shale	724	734
Sandy Shale	734	816
Shale	816	846
Sandy Shale	846	858
Shale	858	866
Sandy Shale	866	928
Shale	928	931
Sandy Shale	932	937
Shale	937	948
Coal	948	951



OCT 25 2002

Formation	Top	Bottom
Sandy Shale	1009	1023
Shale	1023	1068
Sandy Shale	1068	1085
Sandstone	1085	1200
Shale	1200	1232
Coal	1232	1232
Sandy Shale	1232	1327
Shale	1327	1331
Coal	1331	1336
Shale	1336	1342
Sandy Shale	1342	1363
Shale	1363	1385
Sandy Shale	1385	1428

RECEIVED
Office of Oil & Gas
Permitting
OCT 11 2002
WV Department of
Environmental Protection

WV 1979 C