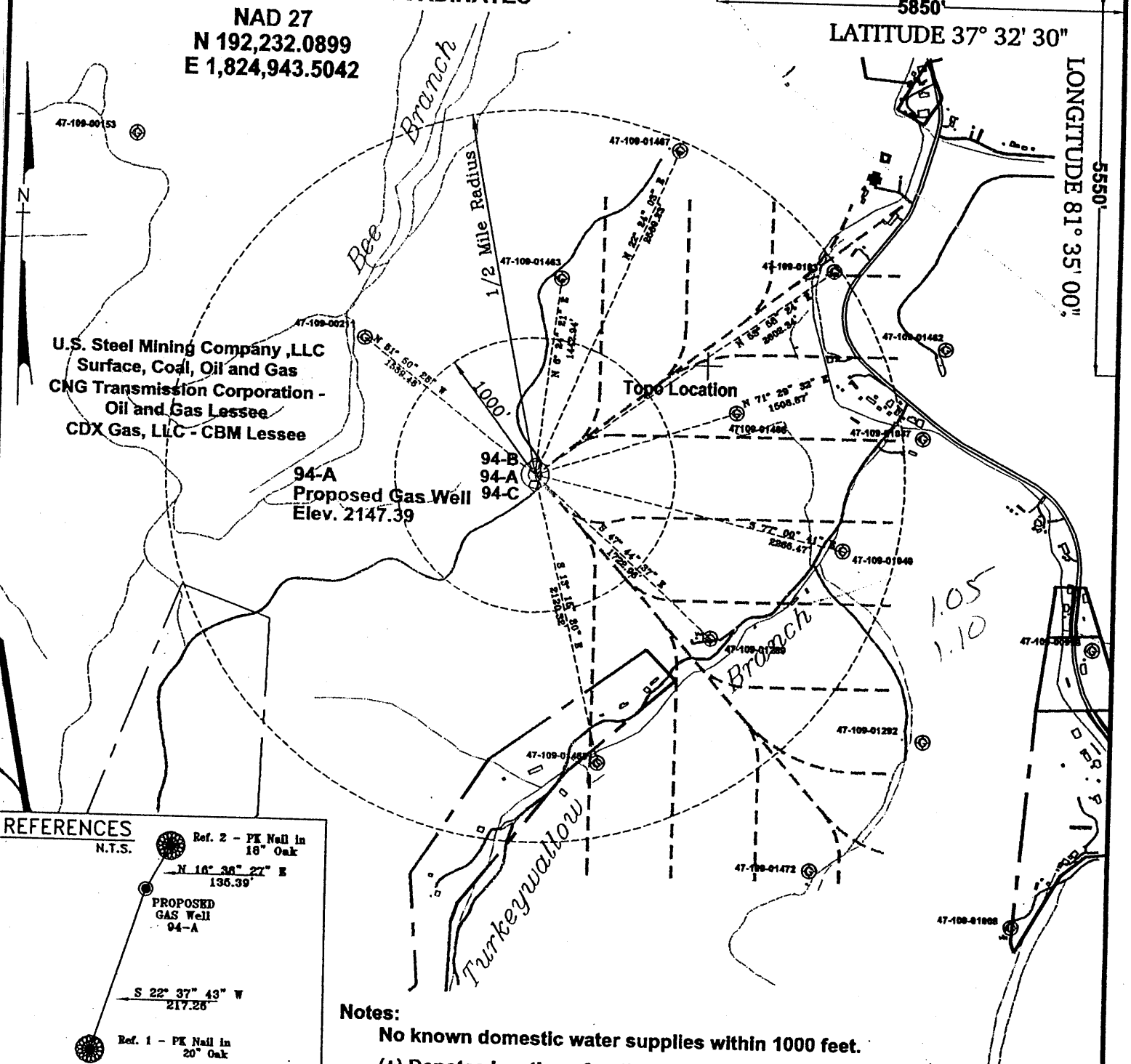


WEST VIRGINIA STATE PLANE COORDINATES

NAD 27
N 192,232.0899
E 1,824,943.5042

5850'
LATITUDE 37° 32' 30"

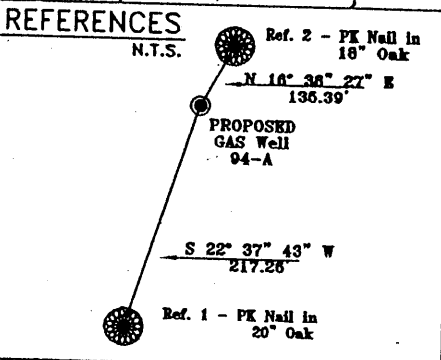
LONGITUDE 81° 35' 00"



U.S. Steel Mining Company, LLC
Surface, Coal, Oil and Gas
CNG Transmission Corporation -
Oil and Gas Lessee
CDX Gas, LLC - CBM Lessee

94-A
Proposed Gas Well
Elev. 2147.39

Topo Location

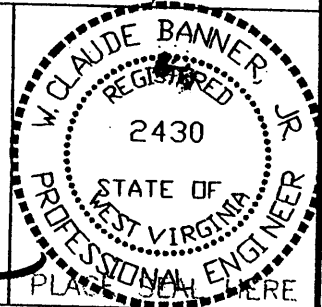


Notes:
No known domestic water supplies within 1000 feet.
(+) Denotes location of well on USGS map.

FILE No. CDXGAS
DRAWING NAME \CDXGAS\PLAT
FILE NAME 94-A
SCALE 1" = 1000'
MINIMUM DEGREE OF ACCURACY 1 : 2500
PROVEN SOURCE OF ELEVATION GPS - GLOBAL POSITIONING SYSTEM

I THE UNDERSIGNED, HEREBY CERTIFY THAT THIS PLAT IS CORRECT TO THE BEST OF MY KNOWLEDGE AND BELIEF AND SHOWS ALL THE INFORMATION REQUIRED BY LAW AND THE REGULATIONS ISSUED AND PRESCRIBED BY THE DEPARTMENT OF MINES.

(SIGNED) W. Claude Banner, Jr.
R.P.E. 2430 R.P.S.



**STATE OF WEST VIRGINIA
DIVISION OF ENVIRONMENTAL PROTECTION
OFFICE OF OIL AND GAS
NITRO, WV**

DATE MARCH 30, 2001
OPERATOR'S WELL No. 94-A
API WELL No. 47 - 109 - 02034C
STATE COUNTY PERMIT

WELL TYPE: OIL GAS CBM LIQUID INJECTION WASTE DISPOSAL
(IF "GAS") PRODUCTION X STORAGE DEEP SHALLOW
LOCATION: ELEVATION 2147.39 WATER SHED BEE BRANCH OF INDIAN CREEK
DISTRICT CENTER COUNTY WYOMING
QUADRANGLE PINEVILLE, WV

SURFACE OWNER U.S. STEEL MINING COMPANY, LLC ACREAGE 37977.66
CBM ROYALTY OWNER U.S. STEEL MINING COMPANY, LLC LEASE ACREAGE 4498.52

PROPOSED WORK: DRILL X CONVERT DRILL DEEPER REDRILL FRACTURE OR STIMULATE PLUG OFF OLD FORMATION PERFORATE NEW FORMATION OTHER PHYSICAL CHANGE IN WELL (SPECIFY)
MAY 18 2001

PLUG AND ABANDON CLEAN OUT AND REPLUG
TARGET FORMATION POCAHONTAS NO. 3 AND PENN. COALS
WELL OPERATOR CDX GAS, LLC ESTIMATED DEPTH 1386'
ADDRESS P.O. BOX 609 PINEVILLE WV 26074 DESIGNATED AGENT JOSEPH ZUPANICK
ADDRESS P.O. BOX 609

WV 02034C

State of West Virginia
Division of Environmental Protection
Section of Oil & Gas

Well Operator's Report of Well Work

Farm name: U.S. Steel Mining Company

Operator Well No: 94-A

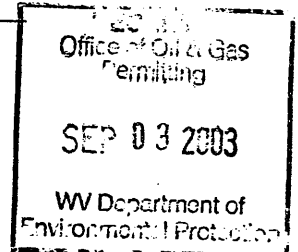
Location: Elevation: 2147.39

Quadrangle: Pineville

District: Center

County: WYOMING

Latitude: 5850 Feet South of 37 Deg. 32 Min. 30 Sec.
Longitude: 5550 Feet West of 81 Deg. 35 Min. 00 Sec.



Company: CDX Gas, LLC
P.O. Box 609
Pineville, WV 24874

Agent: JOSEPH A. ZUPANICK

Inspector: Ronnie Scott
Permit Issued: 5/16/01
Well Work commenced: 6/28/03
Well Work completed: 7/22/03
Verbal plugging
Permission granted on:
Rotary x Cable _____ Rig
Total depth (ft) 1244 TVD _____
Fresh water depths (ft) N/A
Salt water depths (ft) N/A
Is coal being mined in the area (Y/N)? Y
Coal depths (ft): 77', 114', 121', 273', 347', 659',
703', 736', 865', 1039', 1046', 1085'

Casing & Tubing Size	Used in Drilling	Left in Well	Cement Fill up
13 3/8"	29'	29'	20 cuft
9 5/8"	706'	706'	221cuft
7"	1121'	1121'	182cuft

OPEN FLOW DATA

Producing formation Non Producer

Gas: Initial open flow N/A Mcf/d
Final open flow N/A Mcf/d

Time of open flow between initial and final tests: _____ hours

Static rock pressure _____ psig (surface pressure) after _____ hours

Pay zone depth (ft)

Oil: Initial open flow _____ Bbl/d
Final open flow _____ Bbl/d

Second Producing formation _____

Gas: Initial open flow _____ Mcf/d
Final open flow _____ Mcf/d

Time of open flow between initial and final tests: _____ hours

Static rock pressure _____ psig (surface pressure) after _____ hours

Pay zone depth (ft)

Oil: Initial open flow _____ Bbl/d
Final open flow _____ Bbl/d

Note: ON BACK OF THIS FORM, PUT THE FOLLOWING: 1) DETAILS OF PERFORATED INTERVALS, FRACTURING OR STIMULATING, PHYSICAL CHANGE, ETC. 2) THE WELL LOG WHICH IS A SYSTEMATICK DETAILED GEOLOGICAL RECORD OF ALL FORMATIONS, INCLUDING COAL ENCOUNTERED BY THE WELLBORE.

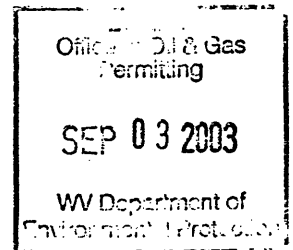
For: Steve Pauley
By: Steve Pauley
Date: 8-29-03

SEP 18 2003

WYO 2034C

Conti.

Sandstone	572	575
Sandy Shale	575	580
Sandstone	580	594
Shale	594	607
Sandy Shale	607	624
Shale	624	659
Coal	659	662
Shale	662	683
Sandy Shale	683	703
Void (Sewell)	703	707
Sandy Shale	707	734
Sandstone	734	736
Coal	736	738
Shale	738	743
Sandstone	743	764
Sandy Shale	764	781
Shale	781	801
Sandy Shale	801	862
Shale	862	865
Coal	865	866
Shale	866	869
Sandy Shale	869	873
Shale	873	903
Sandy Shale	903	923
Shale	923	927
Sandy Shale	927	932
Sandstone	932	958
Sandy Shale	958	961
Sandstone	961	993
Shale	993	1039
Coal	1039	1043
Shale	1043	1046
Coal	1046	1047
Shale	1047	1048
Sandstone	1048	1085
Coal	1085	1086
Shale	1086	1089
Sandy Shale	1089	1180
Sandstone	1180	1244



WYO 2034 C