

PROPOSED WELL COORDINATES

N: 274180.82
E: 1844594.66
WV SOUTH ZONE
NAD 27

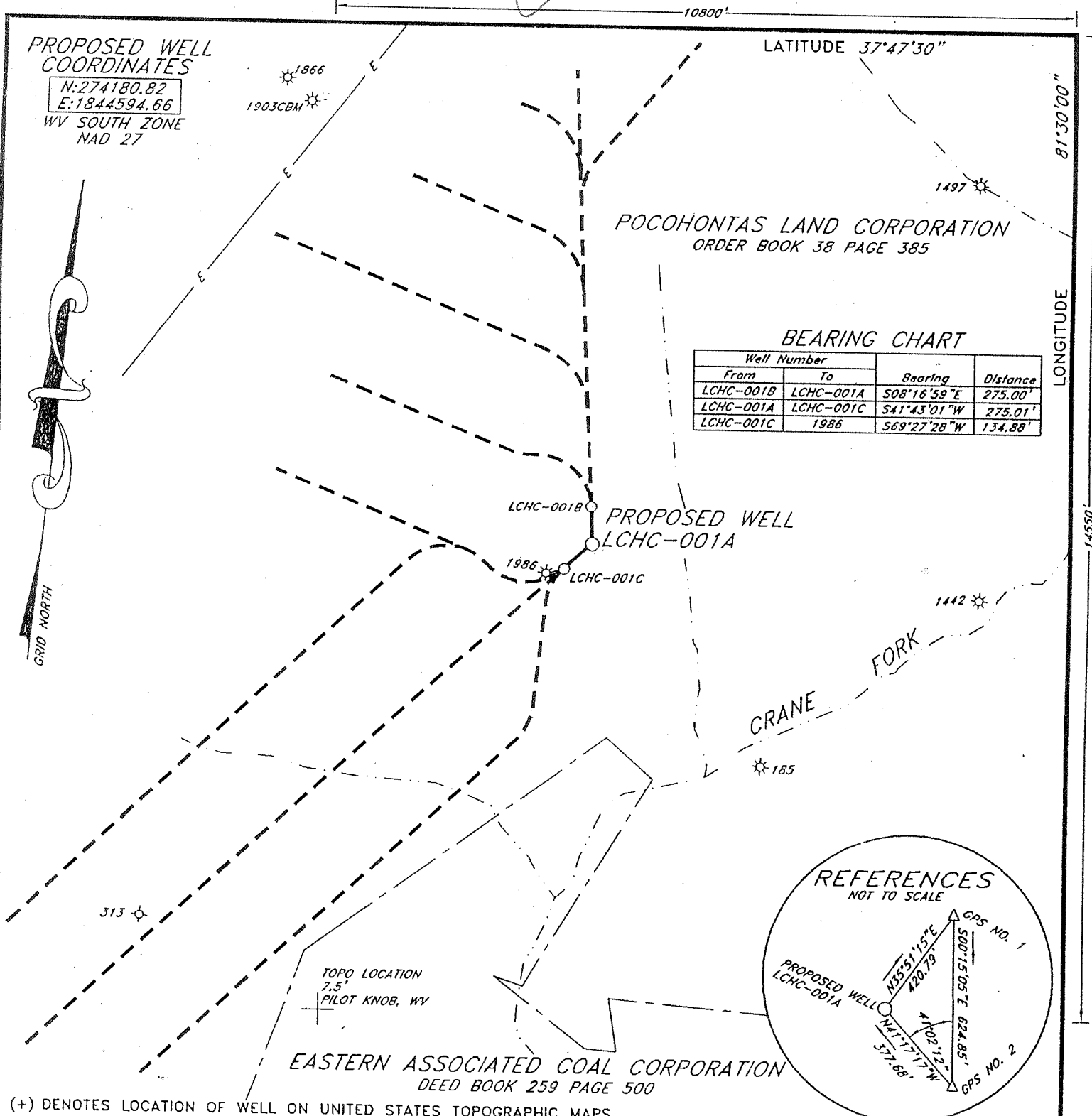
LATITUDE 37°47'30"

LONGITUDE 81°30'00"

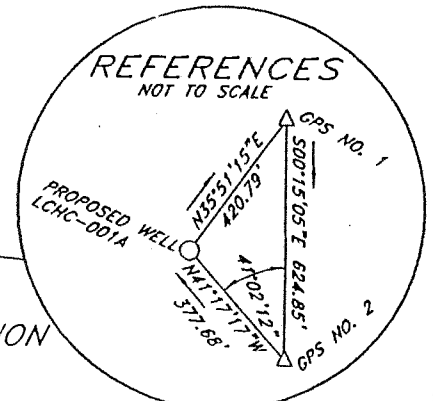
POCOHONTAS LAND CORPORATION
ORDER BOOK 38 PAGE 385

BEARING CHART

Well Number		Bearing	Distance
From	To		
LCHC-001B	LCHC-001A	S08°16'59"E	275.00'
LCHC-001A	LCHC-001C	S41°43'01"W	275.01'
LCHC-001C	1986	S69°27'28"W	134.88'



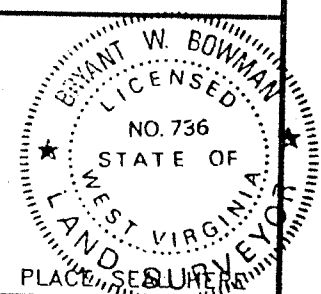
EASTERN ASSOCIATED COAL CORPORATION
DEED BOOK 259 PAGE 500



(+) DENOTES LOCATION OF WELL ON UNITED STATES TOPOGRAPHIC MAPS

FILE NO. _____
DRAWING NO. _____
SCALE 1"=1000'
MINIMUM DEGREE OF ACCURACY 1:50000
PROVEN SOURCE OF ELEVATION GPS DISK NO. 2
ELEVATION 2130.15

I THE UNDERSIGNED, HEREBY CERTIFY THAT THIS PLAT IS CORRECT TO THE BEST OF MY KNOWLEDGE AND BELIEF AND SHOWS ALL THE INFORMATION REQUIRED BY LAW AND THE REGULATIONS ISSUED AND PRESCRIBED BY THE DEPARTMENT OF ENVIRONMENTAL PROTECTION.
(SIGNED) Bryant W. Bowman
R.P.E. _____ L.L.S. 736



STATE OF WEST VIRGINIA
DEPARTMENT OF ENVIRONMENTAL PROTECTION
OIL AND GAS DIVISION



DATE MAY 4, 2003
OPERATOR'S WELL NO. LCHC-001A
API WELL NO. _____

WELL TYPE: OIL ___ GAS ___ LIQUID INJECTION ___ WASTE DISPOSAL ___
(IF "GAS,") PRODUCTION ___ STORAGE ___ DEEP ___ SHALLOW ___
STATE COUNTY PERMIT 47 109 02279C

LOCATION: ELEVATION 2139.30 WATERSHED CRANE FORK OF CLEAR FORK
DISTRICT OCEANA COUNTY WYOMING

SURFACE OWNER POCOHONTAS LAND CORPORATION ACREAGE 29500±
OIL & GAS ROYALTY OWNER PENN VIRGINIA OIL & GAS CORPORATION LEASE ACREAGE 29500±

PROPOSED WORK: DRILL CONVERT ___ DRILL DEEPER ___ REDRILL ___ FRACTURE OR STIMULATE ___ PLUG OFF OLD FORMATION ___ PERFORATE NEW FORMATION ___ OTHER PHYSICAL CHANGE IN WELL (SPECIFY) _____

PLUG AND ABANDON ___ CLEAN OUT AND REPLUG ___
TARGET FORMATION Lower Beeky Coals ESTIMATED DEPTH 1,590
WELL OPERATOR PENN VIRGINIA OIL & GAS CORPORATION DESIGNATED AGENT MR. HARRY JEWEL
ADDRESS 2550 EAST STONE DRIVE SUITE 110 ADDRESS PO BOX 460
KINGSPORT, TN 37660 RAVENCLIFF, WV 25913

WYO 2279 C

(MAY 2003) 6-0

State of West Virginia
Division of Environmental Production
Section of Oil and Gas

AGS

Well Operator's Report of Well Work

Farm Name Pocahontas Land Corporation

Operator Well No.: LCHC-001A

LOCATION: Elevation: 2139.3

Quadrangle: Pilot Knob 7 1/2'

District: Oceana County: Wyoming
Latitude: 14550 Feet South of 37 Deg. 47 Min. 30 Sec.
Longitude: 10800 Feet West of 81 Deg. 30 Min. 00 Sec.

Company:

Penn Virginia Oil & Gas Corporation

	Casing and Tubing	Used in drilling	Left in well	Cement fill up Cu. Ft.
Address: 2550 East Stone Drive, Suite 110	18"	20'	20'	0
Kingsport, TN 37660	13 3/8"	320'	320'	212
Agent: Harry Jewell	7"	1285'	1285'	472
Inspector: Ronald Scott				
Date Permit Issued: 06/30/2003				
Date Well Work Commenced: 07/01/2003				
Date Well Work Completed: 10/05/2003				
Verbal Plugging:				
Date Permission granted on:				
Rotary X Cable Rig				
Total Depth (feet): 1,593				
Fresh Water Depth (ft):				
Salt Water Depth (ft):				
Is coal being mined in area (N/Y)? N				
Coal Depths (ft): 70'-72', 272'-275', 480'-482', 910'-913'				

RECEIVED
Office of Oil & Gas

JAN 30 2004

WV Department of
Environmental Protection

OPEN FLOW DATA

Producing formation Production via LCHC-001B & 001C Pay zone depth (ft) _____

Gas: Initial open flow _____ MCF/d Oil: Initial open flow _____ Bbl/d
 Final open flow _____ MCF/d Final open flow _____ Bbl/d
 Time of open flow between initial and final tests: _____ Hours
 Static rock pressure _____ psig (surface pressure) after _____ Hours

Second producing formation _____ Pay zone depth (ft) _____

Gas: Initial open flow _____ MCF/d Oil: Initial open flow _____ Bbl/d
 Final open flow _____ MCF/d Final open flow _____ Bbl/d
 Time of open flow between initial and final tests: _____ Hours
 Static rock pressure _____ psig (surface pressure) after _____ Hours

NOTE: ON BACK OF THIS FORM PUT THE FOLLOWING: 1). DETAILS OF PERFORATED INTERVALS, FRACTURING OR STIMULATING, PHYSICAL CHANE, TEC. 2). THE WELL LOG WHICH IS A SYSTEMATIC DETAILED GEOLOGICAL RECORD OF ALL FORMATIONS, INCLUDING COAL ENCOUNTERED BY THE WELLBORE.

Signed: Michael S. Dampier
By: _____
Date: 1/28/2004

FEB 13 2004

WYOM 2279C

DETAILS OF PERFORATIONS, FRACTURING, OR PHYSICAL CHANGE, ETC.

<u>FORMATIONS</u>	<u>TOP</u>	<u>BOTTOM</u>	<u>REMARKS</u>
Sandstone & Shale	0	270	
Coal	270	274	
Sandstone & Shale	274	483	
Coal	483	486	
Sandstone & Shale	486	607	
Coal	607	609	
Sandstone & Shale	609	1593	
Coal	1593		Turned Horizontal in Lower Beckley