

11000'

LATITUDE 37°47'30"

POCOHONTAS LAND CORPORATION
ORDER BOOK 38 PAGE 385

1866
1903CBM

1497

BEARING CHART

Well Number		Bearing	Distance
From	To		
LCHC-001B	LCHC-001A	S08°16'59"E	275.00'
LCHC-001A	LCHC-001C	S41°43'01"W	275.01'
LCHC-001C	1986	S69°27'28"W	134.88'

PROPOSED WELL COORDINATES

N: 273975.54
E: 1844411.65
WV SOUTH ZONE
NAD 27

332P

LONGITUDE 81°30'00"

GRID NORTH

LCHC-001B
LCHC-001A

1986
PROPOSED WELL
LCHC-001C

1442

CRANE

185

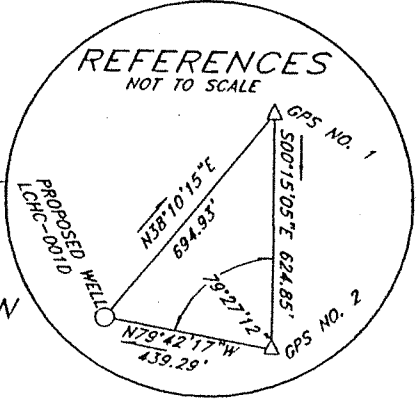
FORK

14250'

313

TOPO LOCATION
7.5'
PILOT KNOB, WV

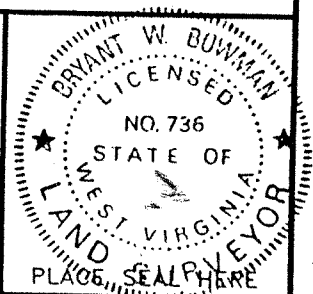
EASTERN ASSOCIATED COAL CORPORATION
DEED BOOK 259 PAGE 500



(+) DENOTES LOCATION OF WELL ON UNITED STATES TOPOGRAPHIC MAPS

FILE NO. _____
 DRAWING NO. _____
 SCALE 1"=1000'
 MINIMUM DEGREE OF ACCURACY 1:50000
 PROVEN SOURCE OF ELEVATION GPS DISK NO. 2
 ELEVATION 2130.15

I THE UNDERSIGNED, HEREBY CERTIFY THAT THIS PLAT IS CORRECT TO THE BEST OF MY KNOWLEDGE AND BELIEF AND SHOWS ALL THE INFORMATION REQUIRED BY LAW AND THE REGULATIONS ISSUED AND PRESCRIBED BY THE DEPARTMENT OF ENVIRONMENTAL PROTECTION.
 (SIGNED) Bryant W. Bowman
 R.P.E. _____ L.L.S. 736



STATE OF WEST VIRGINIA
 DEPARTMENT OF ENVIRONMENTAL PROTECTION
 OIL AND GAS DIVISION



DATE MAY 4, 2003
 OPERATOR'S WELL NO. LCHC-001C
 API WELL NO. _____

WELL TYPE: OIL GAS LIQUID INJECTION WASTE DISPOSAL
 (IF "GAS,") PRODUCTION STORAGE DEEP SHALLOW
 LOCATION: ELEVATION 2133.54 WATERSHED CRANE FORK OF CLEAR FORK
 DISTRICT OCEANA COUNTY WYOMING
 QUADRANGLE PILOT KNOB, WV & MATHENY, WV

47 - 109 - 02281C
 STATE COUNTY PERMIT

SURFACE OWNER POCAHONTAS LAND CORPORATION ACREAGE 29500±
 OIL & GAS ROYALTY OWNER FENN VIRGINIA OIL & GAS CORPORATION LEASE ACREAGE 29500±
 LEASE NO. _____

PROPOSED WORK: DRILL CONVERT DRILL DEEPER REDRILL FRACTURE OR STIMULATE PLUG OFF OLD FORMATION PERFORATE NEW FORMATION OTHER PHYSICAL CHANGE IN WELL (SPECIFY) _____

PLUG AND ABANDON CLEAN OUT AND REPLUG
 TARGET FORMATION Lower Parkley Coals ESTIMATED DEPTH 1045
 WELL OPERATOR FENN VIRGINIA OIL & GAS CORPORATION DESIGNATED AGENT MR. HARRY JEWEL
 ADDRESS 2550 EAST STONE DRIVE SUITE 110 ADDRESS PO BOX 460
KINGSPORT, TN 37660 RAVENCLIFF, WV 25913

WYO 2281C

(McGraw 24B)

JUL 23 2003

Handwritten initials

State of West Virginia
Division of Environmental Production
Section of Oil and Gas
Well Operator's Report of Well Work

Farm Name Pocahontas Land Corporation

Operator Well No.: LCHC-001C

LOCATION: Elevation: 2133

Quadrangle: Pilot Knob 7 1/2'

District: Oceana County: Wyoming
Latitude: 14750 Feet South of 37 Deg. 47 Min. 30 Sec.
Longitude: 11000 Feet West of 81 Deg. 30 Min. 00 Sec.

Company:

Penn Virginia Oil & Gas Corporation

	Casing and Tubing	Used in drilling	Left in well	Cement fill up Cu. Ft.
Address: 2550 East Stone Drive, Suite 110	12 3/4"	21'	21'	0
Kingsport, TN 37660	9 5/8"	316'	316'	140
Agent: Harry Jewell	7"	1552'	1552'	371
Inspector: Ronald Scott				
Date Permit Issued: 06/30/2003				
Date Well Work Commenced: 07/01/2003				
Date Well Work Completed: 09/09/2003				
Verbal Plugging:				
Date Permission granted on:				
Rotary X Cable Rig				
Total Depth (feet): 1,642				
Fresh Water Depth (ft): NA				
Salt Water Depth (ft):				
Is coal being mined in area (N/Y)? N				
Coal Depths (ft): 280'-286', 370'-374', 520'-522', 1060'-1062', 1588'-1591', 1599'-1601'				

RECEIVED
Office of Oil & Gas

JAN 30 2004

WV Department of
Environmental Protection

OPEN FLOW DATA

Producing formation Lower Beckley Coals Pay zone depth (ft) _____
 Gas: Initial open flow 2.5 MCF/d Oil: Initial open flow _____ Bbl/d
 Final open flow _____ MCF/d Final open flow _____ Bbl/d
 Time of open flow between initial and final tests: _____ Hours
 Static rock pressure _____ psig (surface pressure) after _____ Hours

Second producing formation _____ Pay zone depth (ft) _____
 Gas: Initial open flow _____ MCF/d Oil: Initial open flow _____ Bbl/d
 Final open flow _____ MCF/d Final open flow _____ Bbl/d
 Time of open flow between initial and final tests: _____ Hours
 Static rock pressure _____ psig (surface pressure) after _____ Hours

NOTE: ON BACK OF THIS FORM PUT THE FOLLOWING: 1). DETAILS OF PERFORATED INTERVALS, FRACTURING OR STIMULATING, PHYSICAL CHANE, TEC. 2). THE WELL LOG WHICH IS A SYSTEMATIC DETAILED GEOLOGICAL RECORD OF ALL FORMATIONS, INCLUDING COAL ENCOUNTERED BY THE WELLBORE.

Signed: *Michael Blampson*
By: _____
Date: 1/28/2004

Vertical handwritten text: W4000, 2281 C

FEB 13 2004

DETAILS OF PERFORATIONS, FRACTURING, OR PHYSICAL CHANGE, ETC.

<u>FORMATIONS</u>	<u>TOP</u>	<u>BOTTOM</u>	<u>REMARKS</u>
Sandstone & Shale	0	265	
Coal	265	267	
Sandstone & Shale	267	474	
Coal	474	476	
Sandstone & Shale	476	598	
Coal	598	601	
Sandstone & Shale	601	1589.5	
Lower Beckley	1589.5	1595	
Sandstone & Shale	1595	1639	