

**PROPOSED WELL COORDINATES**

N: 270523.46  
E: 1860986.87

WV SOUTH ZONE  
NAD 27

**BEARING CHART**

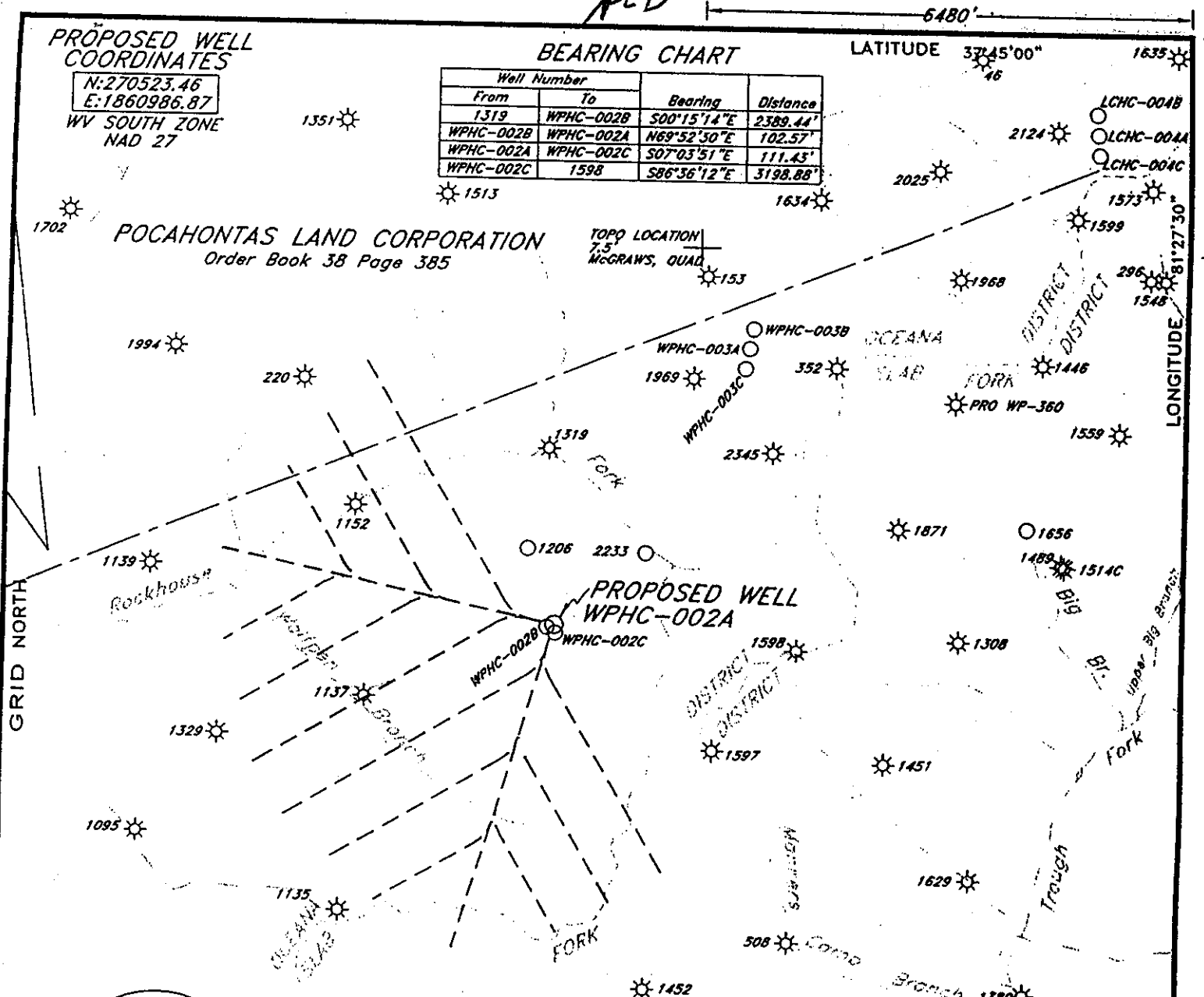
Well Number		Bearing	Distance
From	To		
1319	WPHC-002B	S00°15'14"E	2389.44'
WPHC-002B	WPHC-002A	N69°52'30"E	102.57'
WPHC-002A	WPHC-002C	S07°03'51"E	111.43'
WPHC-002C	1598	S86°36'12"E	3198.88'

LATITUDE 37°45'00"

1635'

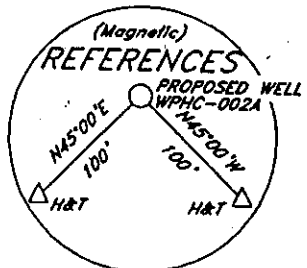
POCAHONTAS LAND CORPORATION  
Order Book 38 Page 385

TOPO LOCATION  
7.5  
McGRAW'S, QUAD



GRID NORTH

LONGITUDE



**PLUM CREEK TIMBER LANDS LP.**

Deed Book 408 Page 478  
P/O Tax Map 123 par. 8  
4301 ac. surface

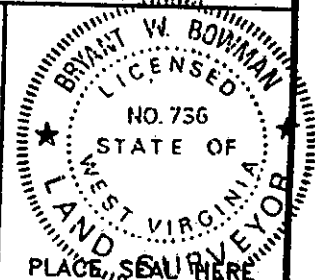
**WYOMING POCAHONTAS COAL CORP.**

4301 ac. mineral

(+) DENOTES LOCATION OF WELL ON UNITED STATES TOPOGRAPHIC MAPS

FILE NO. \_\_\_\_\_  
DRAWING NO. \_\_\_\_\_  
SCALE 1"=2000'  
MINIMUM DEGREE OF ACCURACY 1:20000  
PROVEN SOURCE OF ELEVATION GPS DISK NO. K  
2528.22'

I THE UNDERSIGNED, HEREBY CERTIFY THAT THIS PLAT IS CORRECT TO THE BEST OF MY KNOWLEDGE AND BELIEF AND SHOWS ALL THE INFORMATION REQUIRED BY LAW AND THE REGULATIONS ISSUED AND PRESCRIBED BY THE DEPARTMENT OF ENVIRONMENTAL PROTECTION.  
(SIGNED) *Susan Bowman*  
R.P.E. \_\_\_\_\_ L.L.S. 736



STATE OF WEST VIRGINIA  
DEPARTMENT OF ENVIRONMENTAL PROTECTION  
OIL AND GAS DIVISION



DATE MARCH 1, 2004  
OPERATOR'S WELL NO. WPHC-002A  
API WELL NO. \_\_\_\_\_

WELL TYPE: OIL \_\_\_ GAS \_\_\_ LIQUID INJECTION \_\_\_ WASTE DISPOSAL \_\_\_  
(IF "GAS,") PRODUCTION \_\_\_ STORAGE \_\_\_ DEEP \_\_\_ SHALLOW \_\_\_  
STATE COUNTY PERMIT

LOCATION: ELEVATION 2672.04' WATERSHED ROCKHOUSE FORK OF CLEAR FORK  
DISTRICT OCEANA COUNTY WYOMING

QUADRANGLE McGRAW'S, WV  
SURFACE OWNER PLUM CREEK TIMBER LANDS LP. ACREAGE 4301±  
OIL & GAS ROYALTY OWNER PENN VIRGINIA OIL & GAS CORPORATION LEASE ACREAGE 30000±  
LEASE NO. \_\_\_\_\_

PROPOSED WORK: DRILL  CONVERT \_\_\_ DRILL DEEPER \_\_\_ REDRILL \_\_\_ FRACTURE OR STIMULATE \_\_\_ PLUG OFF OLD FORMATION \_\_\_ PERFORATE NEW FORMATION \_\_\_ OTHER PHYSICAL CHANGE IN WELL (SPECIFY) \_\_\_\_\_

PLUG AND ABANDON \_\_\_ CLEAN OUT AND REPLUG \_\_\_  
TARGET FORMATION L. Beckley Coal ESTIMATED DEPTH 1595'  
WELL OPERATOR PENN VIRGINIA OIL & GAS CORPORATION DESIGNATED AGENT MR. HARRY JEWEL  
ADDRESS 2550 EAST STONE DRIVE SUITE 110 ADDRESS PO BOX 460 RAVENCLIFF, WV 25913

WYO COUNTY NAME PERMIT 2390-C

h-a (248)

*AP*

State of West Virginia  
Division of Environmental Production  
Section of Oil and Gas  
Well Operator's Report of Well Work

Farm Name The Forest Land Group, LLC

Operator Well No.: WPHC-002A

LOCATION: Elevation: 2672.04

Quadrangle: McGraws 7 1/2'

District: Oceana County: Wyoming  
Latitude: 2930 Feet South of 37 Deg. 45 Min. 00 Sec.  
Longitude: 6480 Feet West of 81 Deg. 27 Min. 30 Sec.

Company:

**Penn Virginia Oil & Gas Corporation**

	Casing and Tubing	Used in drilling	Left in well	Cement fill up Cu. Ft.
Address: 2550 East Stone Drive, Suite 110	13 3/8"	40'	40'	30
Kingsport, TN 37660	9 5/8"	941'	941'	366
Agent: Harry Jewell	7"	1375'	1375'	236
Inspector: Ralph Triplett				
Date Permit Issued: 04/21/2004				
Date Well Work Commenced: 05/24/2004				
Date Well Work Completed: 08/02/2004				
Verbal Plugging:				
Date Permission granted on:				
Rotary X Cable Rig				
Total Depth (feet): 1,568				
Fresh Water Depth (ft):				
Salt Water Depth (ft):				
Is coal being mined in area (N/Y)? N				
Coal Depths (ft):				

OPEN FLOW DATA

Producing formation Production via the WPHC-002B&C Pay zone depth (ft) 1567'  
 Gas: Initial open flow \_\_\_\_\_ MCF/d Oil: Initial open flow \_\_\_\_\_ Bbl/d  
 Final open flow \_\_\_\_\_ MCF/d Final open flow \_\_\_\_\_ Bbl/d  
 Time of open flow between initial and final tests: \_\_\_\_\_ Hours  
 Static rock pressure \_\_\_\_\_ psig (surface pressure) after \_\_\_\_\_ Hours

Second producing formation \_\_\_\_\_ Pay zone depth (ft) \_\_\_\_\_  
 Gas: Initial open flow \_\_\_\_\_ MCF/d Oil: Initial open flow \_\_\_\_\_ Bbl/d  
 Final open flow \_\_\_\_\_ MCF/d Final open flow \_\_\_\_\_ Bbl/d  
 Time of open flow between initial and final tests: \_\_\_\_\_ Hours  
 Static rock pressure \_\_\_\_\_ psig (surface pressure) after \_\_\_\_\_ Hours

NOTE: ON BACK OF THIS FORM PUT THE FOLLOWING: 1). DETAILS OF PERFORATED INTERVALS, FRACTURING OR STIMULATING, PHYSICAL CHANE, TEC. 2). THE WELL LOG WHICH IS A SYSTEMATIC DETAILED GEOLOGICAL RECORD OF ALL FORMATIONS, INCLUDING COAL ENCOUNTERED BY THE WELLBORE.

Signed:

*Michael E. Stampeter*  
By: MICHAEL E. STAMPETER  
Date: 4/13/2005

MAY 20 2005  
Office of Oil & Gas  
Office of Chief  
MAY 16 2005  
WV Department of  
Environmental Protection

WYO 2390 C

DETAILS OF PERFORATIONS, FRACTURING, OR PHYSICAL CHANGE, ETC.

---

<u>FORMATIONS</u>	<u>TOP</u>	<u>BOTTOM</u>	<u>REMARKS</u>
Sanstone/Shale/Coal	0	1787	
Coal (Lower Beckley)	1787		TVD 1567.96 Turned Horizontal in Coal