



Diversified Gas & Oil  
Corporation  
100 Diversified Way  
Pikeville KY, 41051

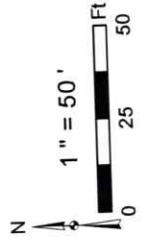
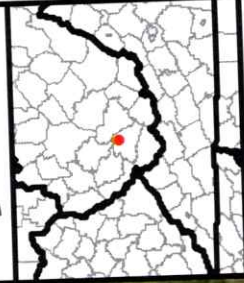
47-109-02537

Plugging Map

### Legend

- Well
- Access Road
- Pits
- Pad
- Public Roads

RECEIVED  
Office of Oil and Gas  
**MAR 10 2025**  
WV Department of  
Environmental Protection



Well No.: 47-109-02537

UTM83: 17, Meters

North: 4174625.74

East: 453983.56

Elev.: 666.39 M

Elev.: 2185.75 Ft

Primary Pit

Secondary Pit

Source: Esri, DeLorme, Earthstar Geographics, and the GIS User Community

04/11/2025





Diversified Gas & Oil  
Corporation  
100 Diversified Way  
Pikeville KY, 41051

47-109-02537

Plugging Map

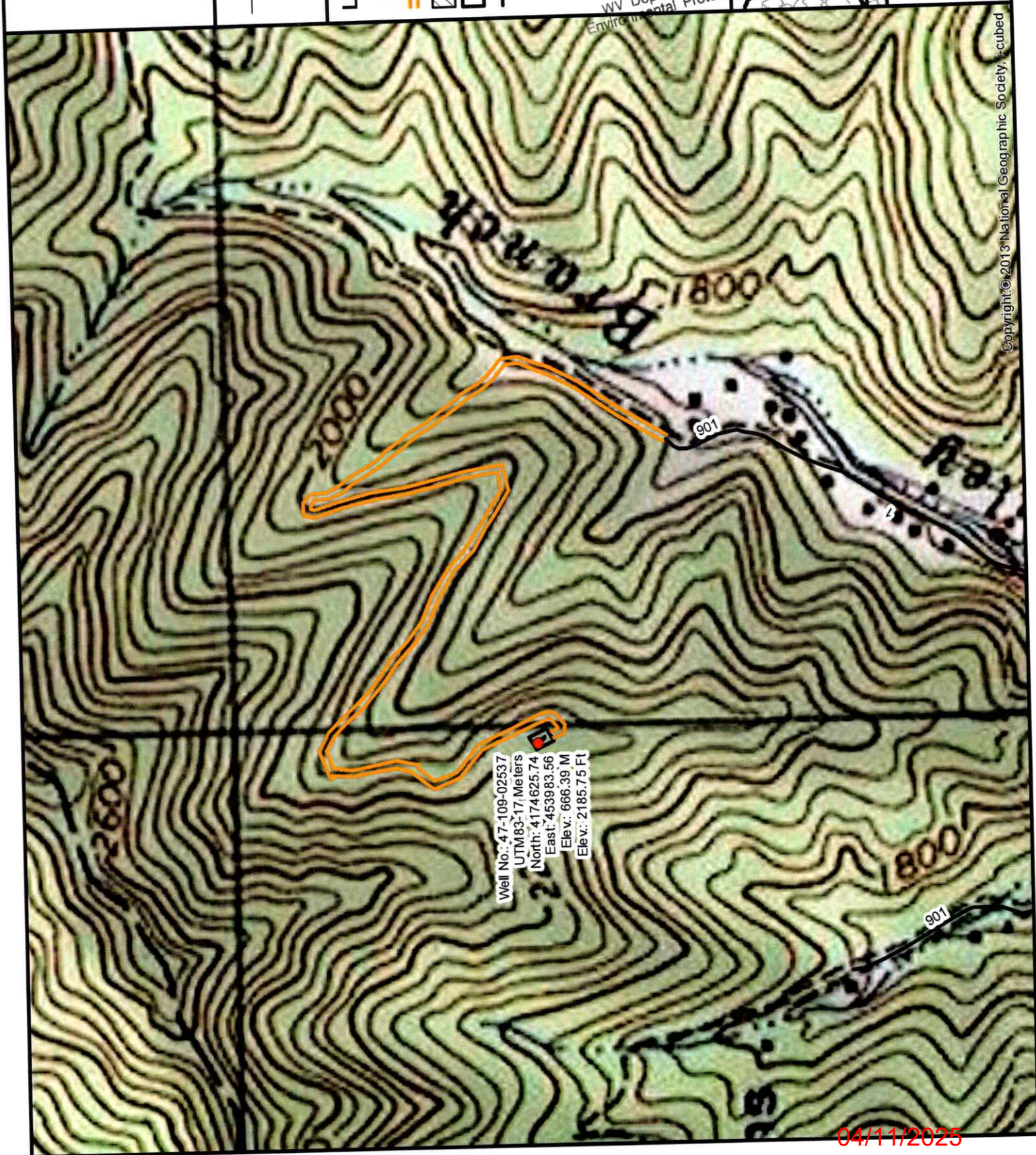
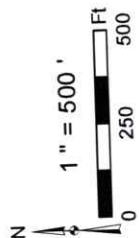
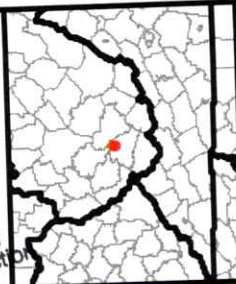
### Legend

- Well
- Access Road
- Pits
- Pad
- Public Roads

RECEIVED  
Office of Oil and Gas

MAR 10 2025

WV Department of  
Environmental Protection



Copyright © 2013 National Geographic Society, Inc.

04/11/2025



WW-7  
8-30-06



West Virginia Department of Environmental Protection  
Office of Oil and Gas  
**WELL LOCATION FORM: GPS**

API: 4710902537 WELL NO.: WPHC 210B

FARM NAME: Forest Land Group

RESPONSIBLE PARTY NAME: Diversified Production, LLC

COUNTY: Wyoming DISTRICT: Slab Fork

QUADRANGLE: Matheny 7.5'

SURFACE OWNER: Lyme Mountaineer Timberlands II, LLC

ROYALTY OWNER: Penn Virginia Oil & Gas Corporation

UTM GPS NORTHING: 4174625.74

UTM GPS EASTING: 453983.56 GPS ELEVATION: 2185.75'

The Responsible Party named above has chosen to submit GPS coordinates in lieu of preparing a new well location plat for a plugging permit or assigned API number on the above well. The Office of Oil and Gas will not accept GPS coordinates that do not meet the following requirements:

1. Datum: NAD 1983, Zone: 17 North, Coordinate Units: meters, Altitude: height above mean sea level (MSL) – meters.
2. Accuracy to Datum – 3.05 meters
3. Data Collection Method:

Survey grade GPS \_\_\_\_: Post Processed Differential \_\_\_\_

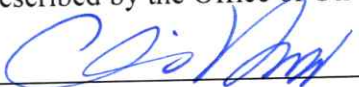
Real-Time Differential \_\_\_\_

Mapping Grade GPS X: Post Processed Differential X

Real-Time Differential \_\_\_\_

4. Letter size copy of the topography map showing the well location.

I the undersigned, hereby certify this data is correct to the best of my knowledge and belief and shows all the information required by law and the regulations issued and prescribed by the Office of Oil and Gas.

  
Signature

Chris Veazey - Director of Administration  
Title

02/17/2025  
Date

RECEIVED  
Office of Oil and Gas  
MAR 10 2025  
WV Department of  
Environmental Protection

04/11/2025