

Oil&Gas

Wells, Horizontal Only

WellStatus

-  Active Well
-  Permit Issued
-  Permit Application
-  Plugged

Wells, Active Status Only

WellUse

-  Brine Disposal
-  Fluid Injection
-  Gas Production
-  House Gas
-  Observation
-  Oil Production
-  Production
-  Solution Mining
-  Storage
-  Vent
-  <all other values>

Wells, Other than Active Status

WellUse

-  Brine Disposal
-  Fluid Injection
-  Gas Production
-  House Gas
-  Observation
-  Oil Production
-  Production
-  Solution Mining





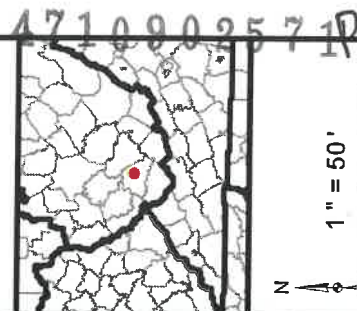
Diversified Gas & Oil
Corporation
100 Diversified Way
Pikeville KY, 41051

47-109-02571

Well Plugging Map

Legend

- Well
- Access Road
- Pits
- Pad
- Public Roads



Source: Esri, DigitalGlobe, GeoEye, Earthstar Geographics, CNR Aero, IGN, USGS, AeroGRID, IGN, and the GIS User Community

04/04/2025



Diversified Gas & Oil
Corporation
100 Diversified Way
Pikeville KY, 41051

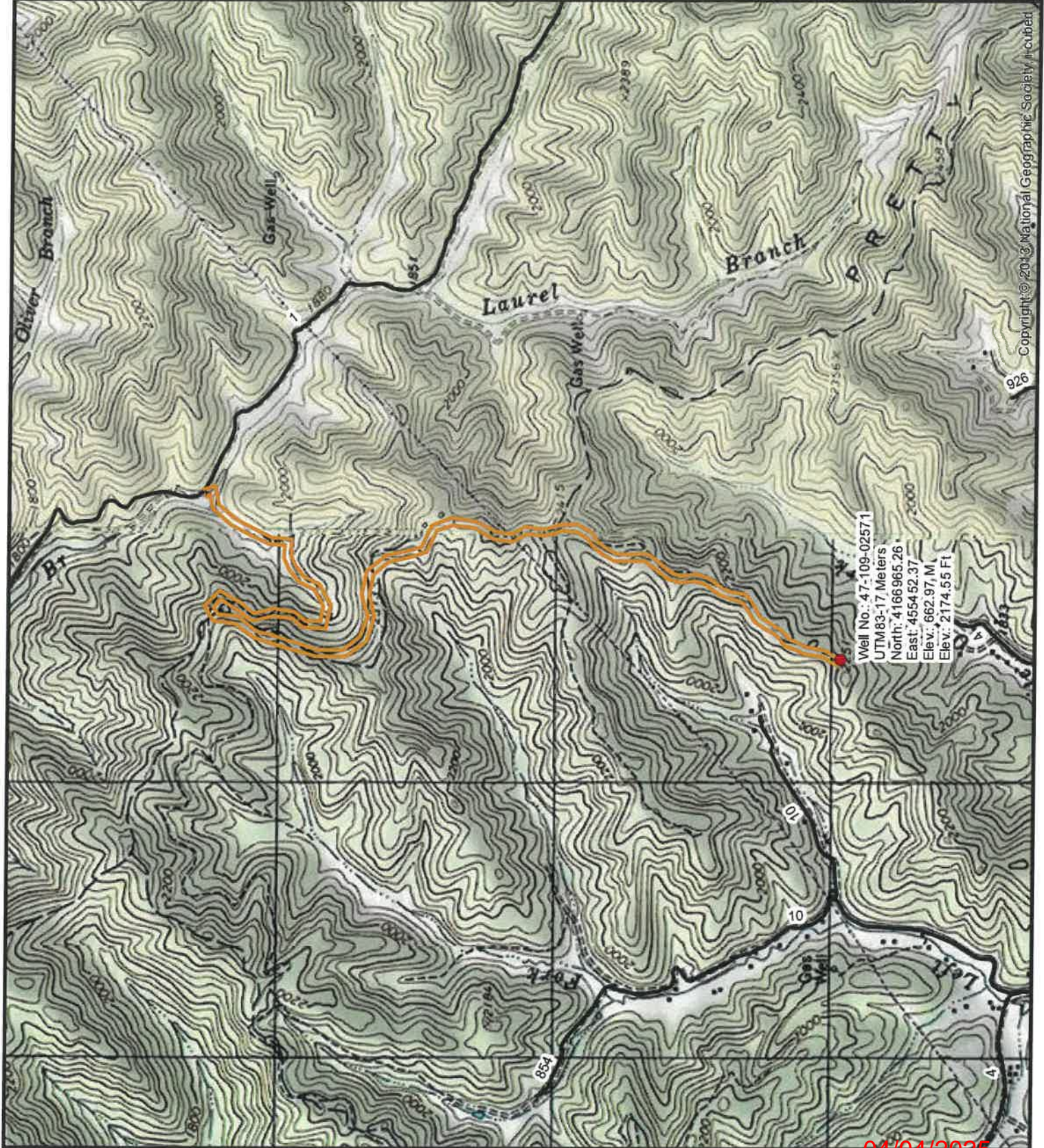
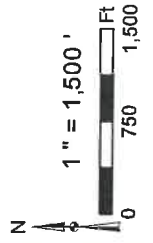
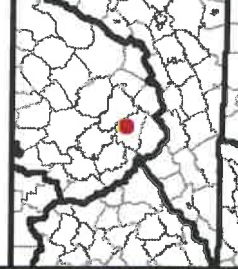
47-109-02571

Well Plugging Map

Legend

- Well
- Access Road
- Pits
- Pad
- Public Roads

4710902571P



Copyright © 2013 National Geographic Society Incubet

04/04/2025

WW-7
8-30-06

4710902571P



West Virginia Department of Environmental Protection
Office of Oil and Gas
WELL LOCATION FORM: GPS

API: 4710902571 WELL NO.: WPHC 212C
FARM NAME: Johnson James D/B
RESPONSIBLE PARTY NAME: Diversified Production, LLC
COUNTY: Wyoming DISTRICT: Center
QUADRANGLE: Matheny 7.5'
SURFACE OWNER: James & Betty Johnson
ROYALTY OWNER: Penn Virginia Oil & Gas Corp.
UTM GPS NORTHING: 4166965.26
UTM GPS EASTING: 455452.37 GPS ELEVATION: 2174.55'

The Responsible Party named above has chosen to submit GPS coordinates in lieu of preparing a new well location plat for a plugging permit or assigned API number on the above well. The Office of Oil and Gas will not accept GPS coordinates that do not meet the following requirements:

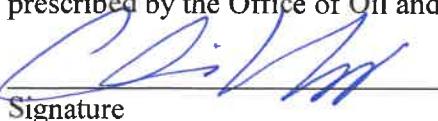
1. Datum: NAD 1983, Zone: 17 North, Coordinate Units: meters, Altitude: height above mean sea level (MSL) – meters.
2. Accuracy to Datum – 3.05 meters
3. Data Collection Method:

Survey grade GPS ____: Post Processed Differential ____
Real-Time Differential ____

Mapping Grade GPS X: Post Processed Differential X
Real-Time Differential ____

4. Letter size copy of the topography map showing the well location.

I the undersigned, hereby certify this data is correct to the best of my knowledge and belief and shows all the information required by law and the regulations issued and prescribed by the Office of Oil and Gas.


Signature

Chris Veazey - Director of Administration
Title

01/31/2025
Date

RECEIVED
Office of Oil and Gas

FEB 25 2025

WV Department of
Environmental Protection

04/04/2025