

Armstrong County

Indiana County

West

East

21672

04075

21529

22980

22222

22256

22384

22148

23520

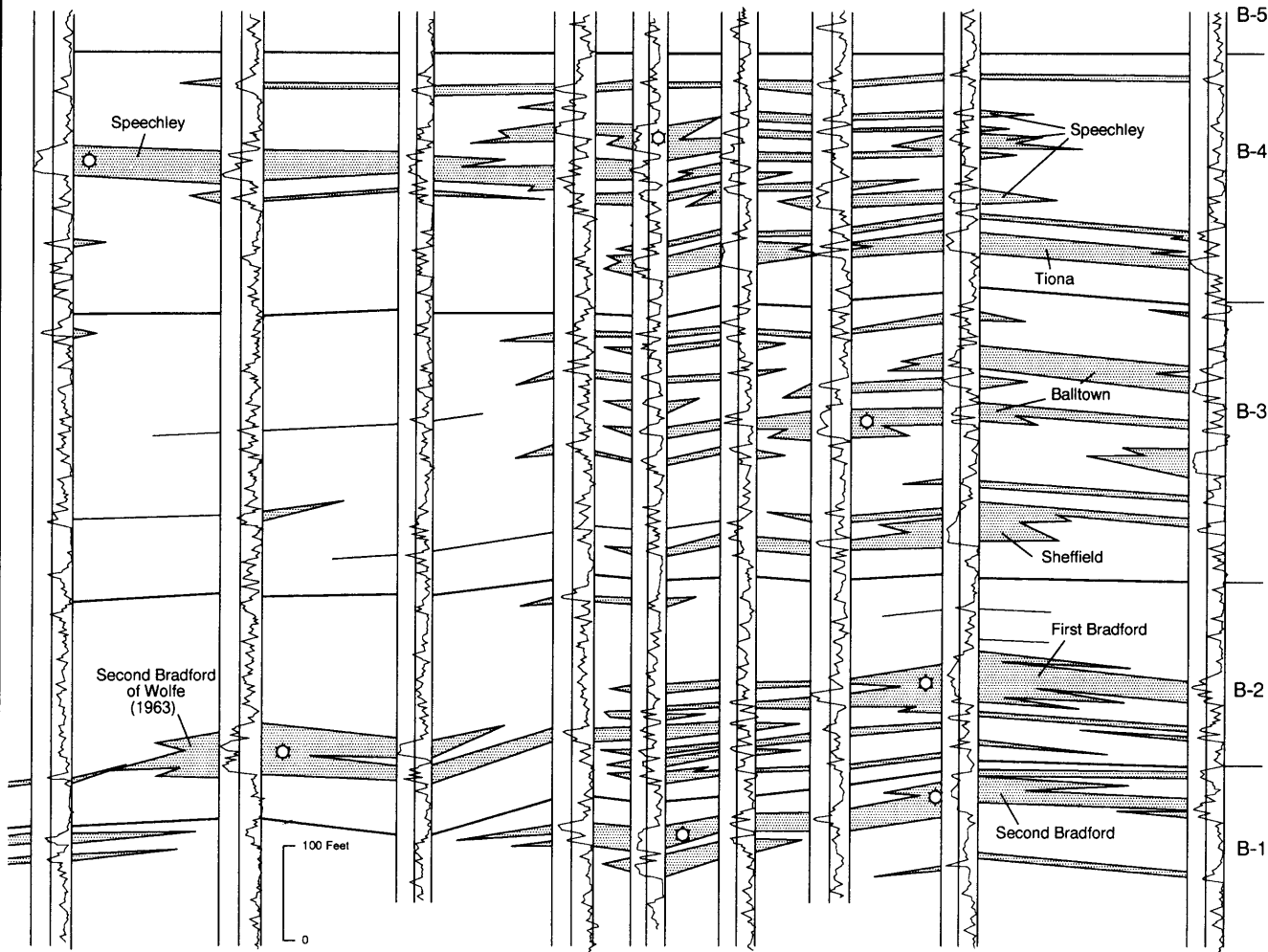


Figure Dbs-15. West-east stratigraphic gamma-ray log cross section in Indiana and Armstrong counties, Pennsylvania, showing the distribution of the Bradford reservoirs across the primary gas-producing area. The correlated units represent 50 percent clean sandstone using the gamma-ray base-line method. Wells are identified using county permit numbers. The First Bradford Sandstone represents the delta front deposits shown in Figure Dbs-14. The Second Bradford of Wolfe (1963) is identified in Figure Dbs-14 as basin plain deposits. Location of cross section is shown in Figure Dbs-14.
 (Boswell and others, 1996-Dbs)