

Explanation of Abbreviations

C	Conglomeratic	Sa	Subarkose
Iw	Interbedded with	Sh	Shale
M	Micaceous	Sl	Sublitharenite
Qa	Quartz arenite		

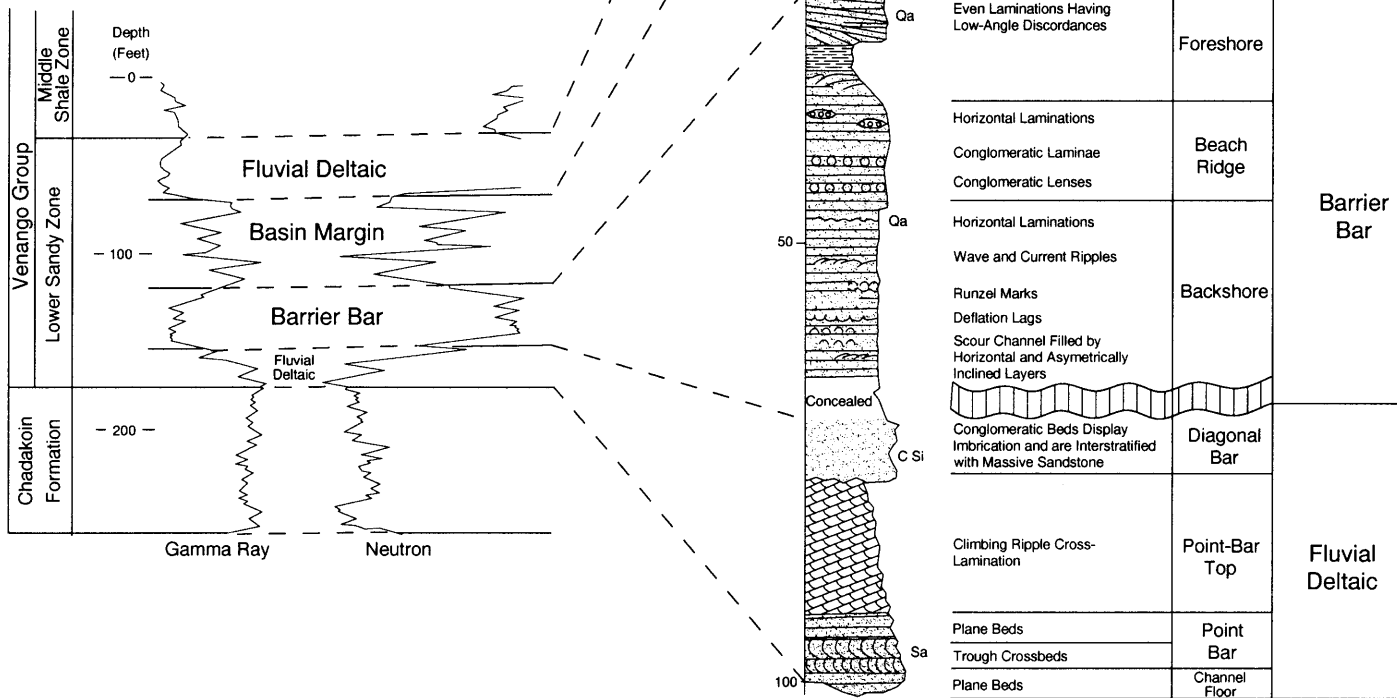


Figure Dvs-18. Paleoenvironmental interpretation of basal Venango sandstones in southwestern Pennsylvania. The units studied in outcrop are analogous to the younger productive sandstones in the Waynesburg Consolidated field. After Harper and Laughrey (1987). (Boswell and others, 1996-Dvs)