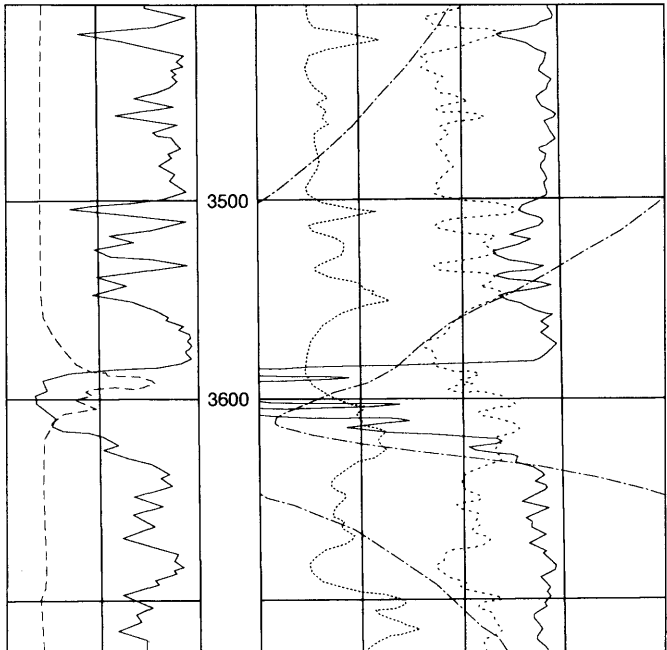


## Clearfield - 22373



<p>--- Caliper (in) ---</p> <p>0 — Gamma Ray — 200 (API Units)</p>	<p>2.0 — Bulk Density (g/cc) — 3.0</p> <p>0 ..... Induction (ohm-m) ..... 100</p> <p>--- Temperature (°F) ---</p> <p>30 ..... Neutron Porosity (%) ..... 10</p>	
--	---	--

**Figure Dbs-32. Type log of productive Kane sandstone (B-1), Cush Cushion field, Clearfield, Indiana, and Cambria counties, Pennsylvania. The anomalous log porosities and high production rates suggest a fractured reservoir.**