

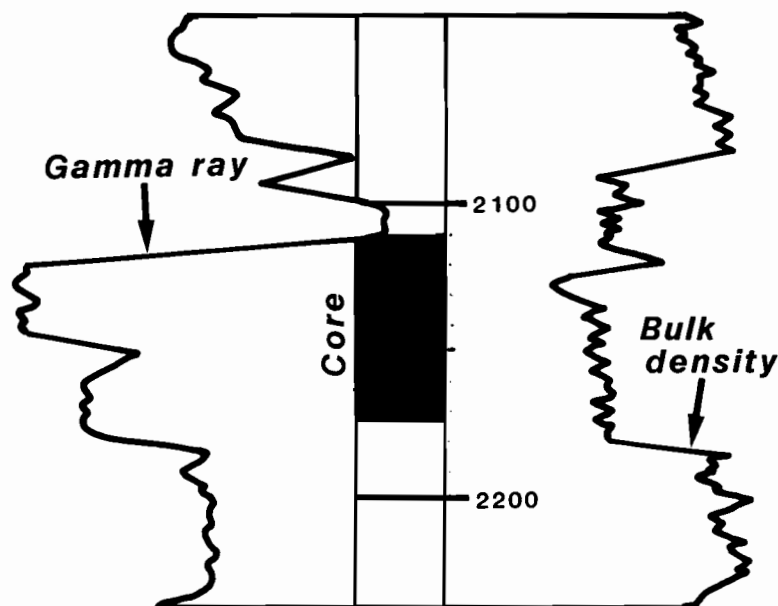
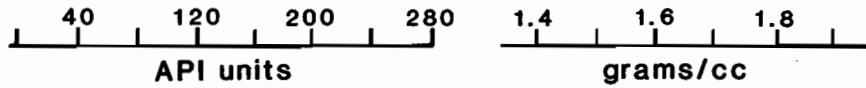
Map Location No. 21

Permit BOONE-1093

Pennzoil No. 115 Yawkey Freeman

Washington Dist. *Curry, Jeffrey field -*

Boone Co., W. Va.

**MAP NO. 21 — NOTABLE FEATURES**

Two coarsening upward sequences of mostly fine sandstone interrupted by a quartz pebble conglomerate. Crossbeds with graded foresets overlie horizontal lamination and bioturbation in lower cycle, where quartz granules are most abundant; crossbedding also abundant in upper cycle.

