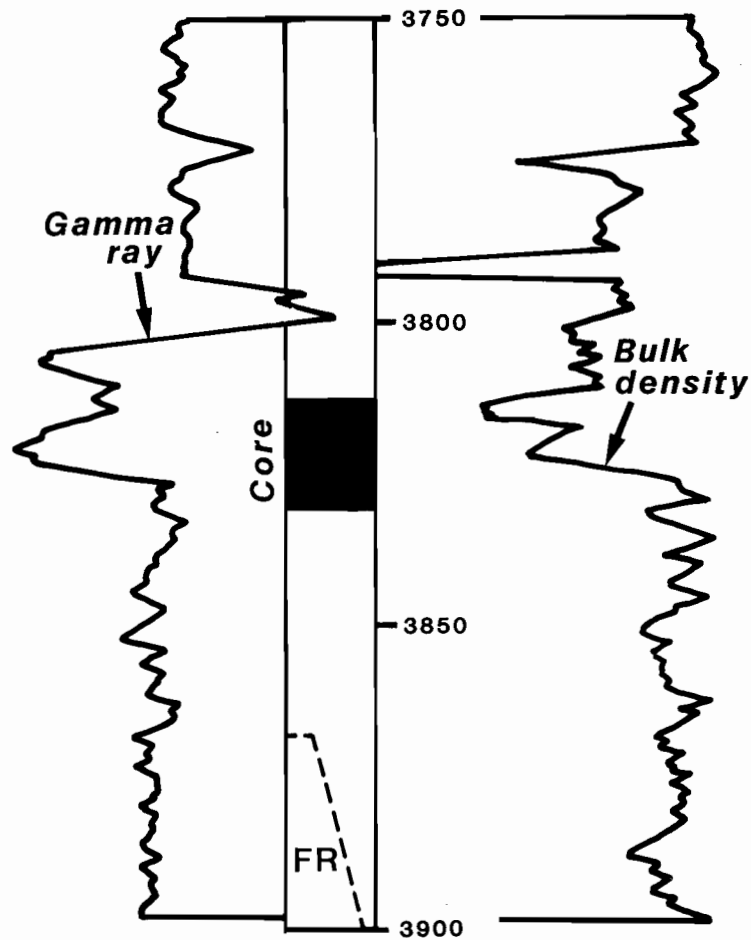
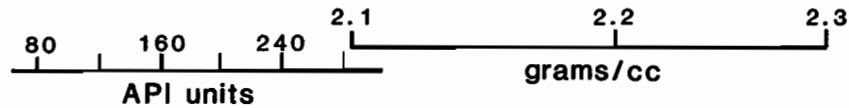


Map Location No. 19

Permit MCD-429
 Consolidated Gas Supply No. 11184 Gladys B. Cooke
 Sandy River Dist. *Huff Creek Field*
 Mc Dowell Co., W. Va.

**MAP NO. 19 — NOTABLE FEATURES**

Mostly very fine to fine sandstone except above quartz pebble conglomerate at top of core; sandstone below conglomerate slightly coarsens upward. Horizontal lamination is predominant followed by microboxwork; graded crossbed at top is notable. Bioturbation most abundant at top.

MAP NUMBER 19

