



AS 2  
of 3

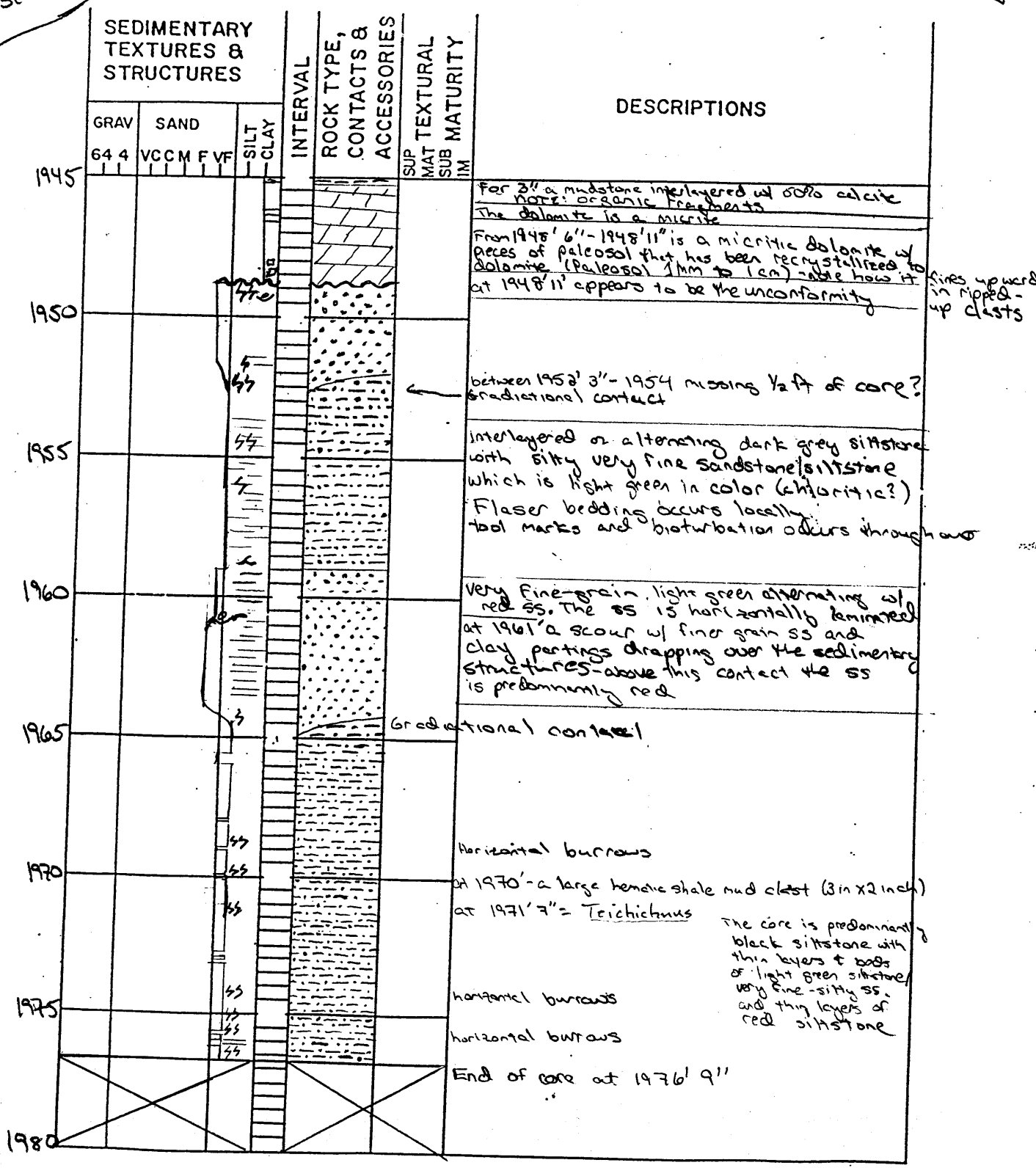
MEASURED SECTION NO. Calhoun 2251 DATE 4/30/90  
 LOCALITY Grantsville - Arnoldberg field STRATIGRAPHIC UNIT Big Line  
 SETTING \_\_\_\_\_ MEASURED BY AV & RM

	SEDIMENTARY TEXTURES & STRUCTURES			INTERVAL	ROCK TYPE, CONTACTS & ACCESSORIES	TEXTURAL MATURITY		DESCRIPTIONS
	GRAV	SAND	SILT CLAY			SUP	SUB	
	64 4	VCCM FVF	—			IM	IM	
1910								gray micrite interbedded w/ dk gray micrite; vertical & horizontal stylolites throughout; massive bedding - slabbed surfaces show micrite has mottled appearance that may indicate bioturbation
1915								
1920								Interbedded dk gray micrite & dk gray black fossil-oid packstone: thin (<40cm) irregular bedding: vertical & horizontal stylolites throughout
1925								dk gray, ooid-gtz sand grainstone w/ calcite spar Cement: gtz sand medium-f.
1930								Interbedded dk gray micrite & dk gray-black fossil-oid packstone: thin (<10cm) irregular bedding: vertical & horizontal stylolites dk gray, ooid-gtz sand grainstone w/ calcite spar Cement: gtz sand medium-f; pass. ble, low-angle planar xbeds
1935								
1940								dk gray, medium-f grained, gtz. ss w/ calcite cement & low-angle, planar xbeds = Note: gradational contact w/ overlying unit
1945								dk gray, quartzose micrite w/ thin (1-2cm) layers of medium-f. gtz ss: small shale clast (<1cm diameter) at bottom

⊙ - ooids  
 ~ - stylolites  
 ⊙ - calcite cement  
 ● - shale clast

NOTE:  
20% of  
the core  
is slotted

MEASURED SECTION NO. Calhoun 2251 DATE 4/30/90  
 LOCALITY Grantville - Arnold's Field STRATIGRAPHIC UNIT Big Line + City Big  
 SETTING \_\_\_\_\_ MEASURED BY AV & RM Injun



S - bioturbation  
 ~ - clay draps  
 e - scour  
 o - fragments of ripped up paleosol  
 < - flaser bedding  
 ~ - unconformity