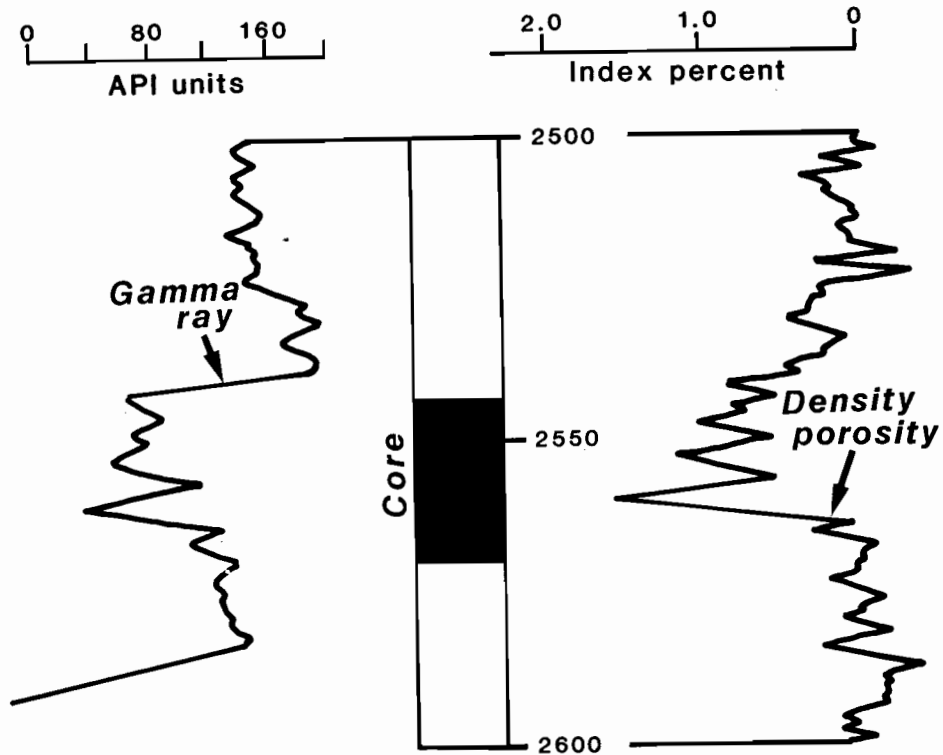


Map Location No. 25

Permit CAL-2846
 Pennzoil No. 6 S. P. Hickman
 Lee Dist. *Richardson*
 Calhoun Co., W. Va.

**MAP NO. 25 — NOTABLE FEATURES**

Very fine sandstone has irregular vertical trend, but clay clasts correlate with coarsest sandstone. Ripple marks and crossbedding are the predominant structures, but some bioturbation exists throughout the core. Sharp basal contact?

MAP NUMBER 25

