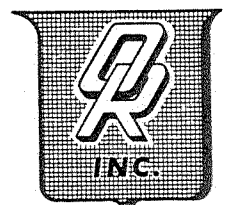


017 1305

PENNZOIL COMPANY
WHOLE CORE ANALYSIS REPORT
THERMAN SPURGEON LEASE WELL NO. 6
DODDRIDGE COUNTY, WEST VIRGINIA



OILFIELD RESEARCH, INC.

REGISTERED ENGINEERS

1006 DIAMOND AVENUE • EVANSVILLE, INDIANA 47717 • PHONE 424-2907 (DAY OR NIGHT)

ROBINSON, ILLINOIS

PAINTSVILLE, KENTUCKY

MORGANFIELD, KENTUCKY

WALDO, OHIO

October 22, 1965

Pennzoil Company
P. O. Box 1588
Parkersburg, West Virginia

IN RE: Therman Spurgeon Lease
Well No. 6
Doddridge County,
West Virginia

Gentlemen:

Long sections of full diameter core of the Injun formation from the subject well were analyzed using whole core procedures. The results of the analysis are tabulated on the coregraph.

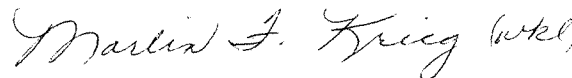
Included in this report is a description of the formation cored.

Very truly yours,

OILFIELD RESEARCH, INC.



Robert Alexander



Marlin F. Krieg

RA:csr

10C: Addressee

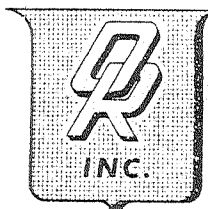


FORMATION CORED

Following is the description of the formation cored:

<u>Depth Interval</u> <u>Feet</u>	<u>Description</u>
INJUN	
1809.0 - 1835.6	- Sandstone, limey, dense, gray, no show of oil.
1835.6 - 1835.8	- Shale, black.
1835.8 - 1840.0	- Dolomite, slightly sandy, hard, tight, light tan, fair show of oil.
1840.0 - 1841.0	- Dolomite, limey, gray, dense, light show of oil.
1841.0 - 1848.0	- Sandstone, limey, dense, gray, no show of oil.
1848.0 - 1851.0	- Shale, black.

C O R E A N A L Y S I S



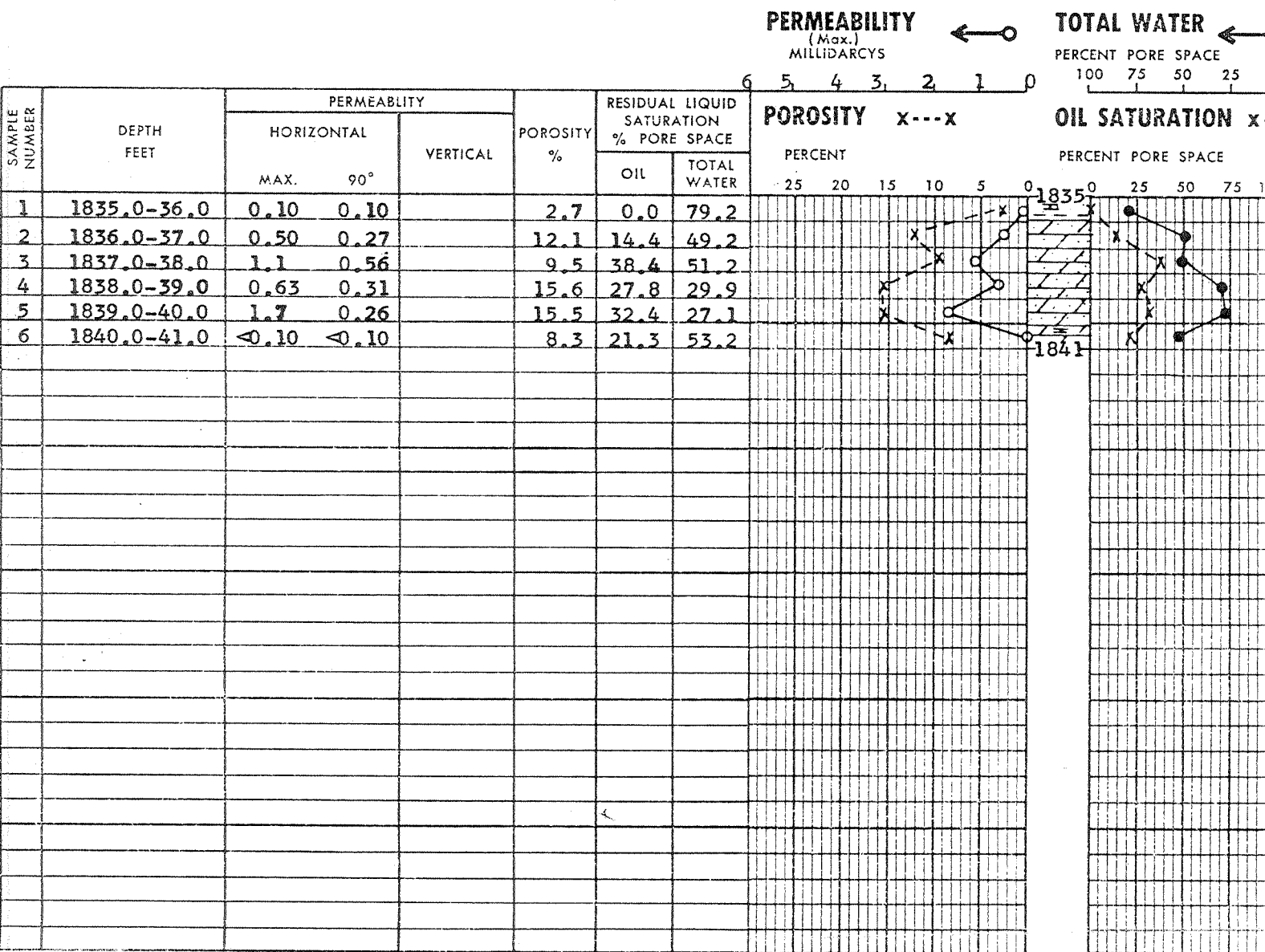
OILFIELD RESEARCH, INC.

COMPANY PENNZOIL COMPANY ELEVATION 971' GL FILE NO. 65010038
 LEASE THERMAN SPURGEON WELL 6 FORMATION INJUN DATE CORED 10-17-65
 FIELD GROVE DR LG. FLUID FWB DATE REPORT 10-22-65
 COUNTY DODDRIDGE STATE W. VA. TYPE OF CORE DIAMOND PERMIT NO. _____
 LOCATION COVE DISTRICT REMARKS SAMPLED BY OR-JCM & CDH

WHOLE CORE ANALYSIS REPORT

SANDSTONE LIMEY SANDSTONE SHALE DOLOMITE

These analyses, opinions or interpretations are based on observations and material supplied by the client to whom and for whose exclusive and confidential use the report is made. The interests, rights or opinions expressed represent the best judgment of Oilfield Research, Inc. and its officers and employees, assuming no responsibility and making no warranty or representation as to the productivity, proper operation, or profitability of any oil, gas or other mineral well or sand in connection with which such report is used or relied upon.



CORE SUMMARY

FORMATION	DEPTH, FEET	FEET CORE ANALYZED	AVERAGE PERMEABILITY		AVERAGE POROSITY %	AVERAGE LIQUID SATURATION, %	
			HORIZONTAL MAX.	VERTICAL 90°		OIL	WATER
INJUN	1836.0 - 1840.0	4.0	1.0	0.35	13.2	28.3	39.4