

### Doddridge 3574

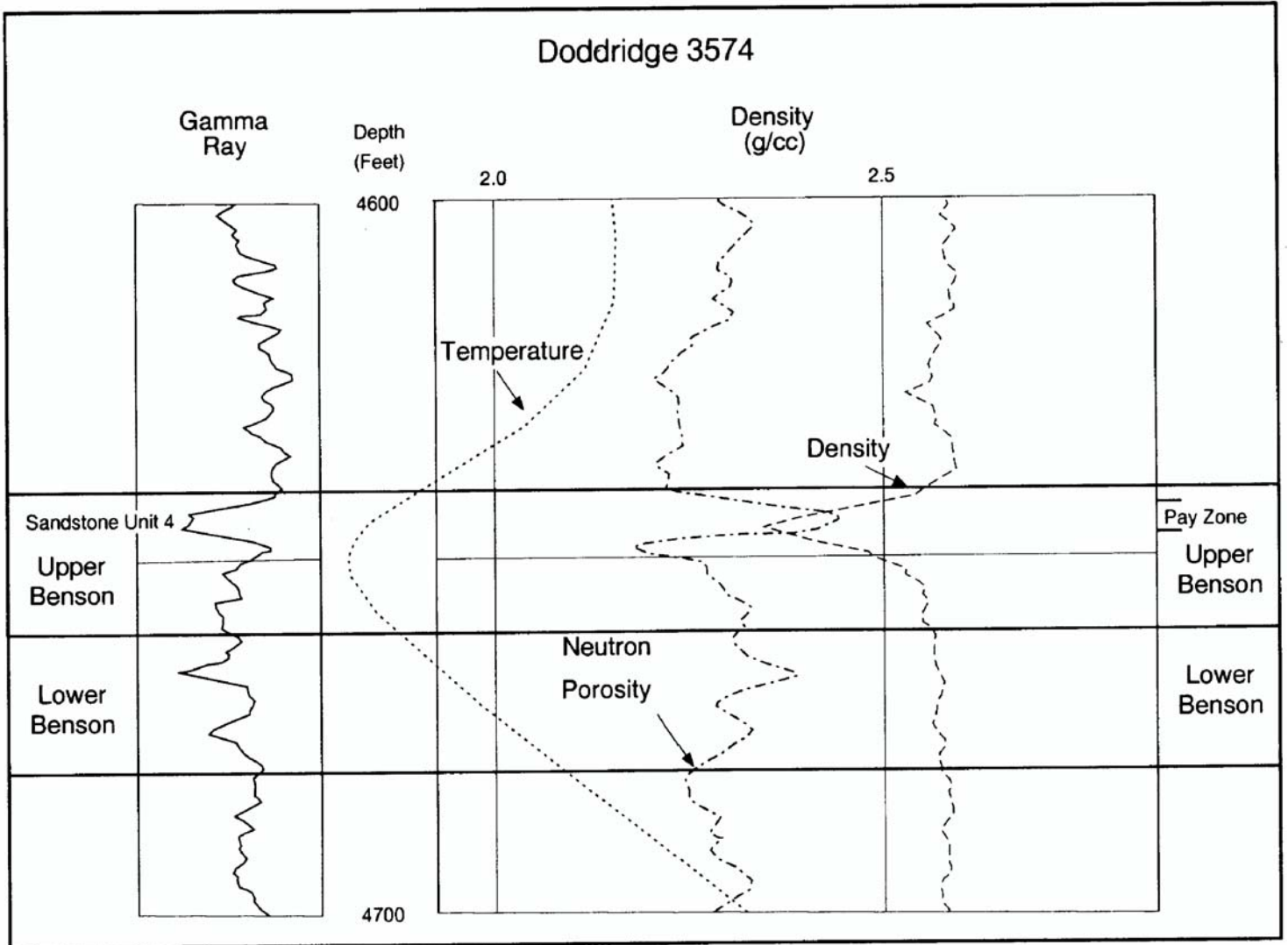


Figure Des-28a. Type log of the E-4 upper Benson siltstone in the Wilbur field, Doddridge and Tyler counties, West Virginia, are located on profile W2-W2' in Figure Des-27 and located along W2-W2' in Figure Des-29b. Log of Doddridge County well no. 3574 shows 4 feet of pay zone.