

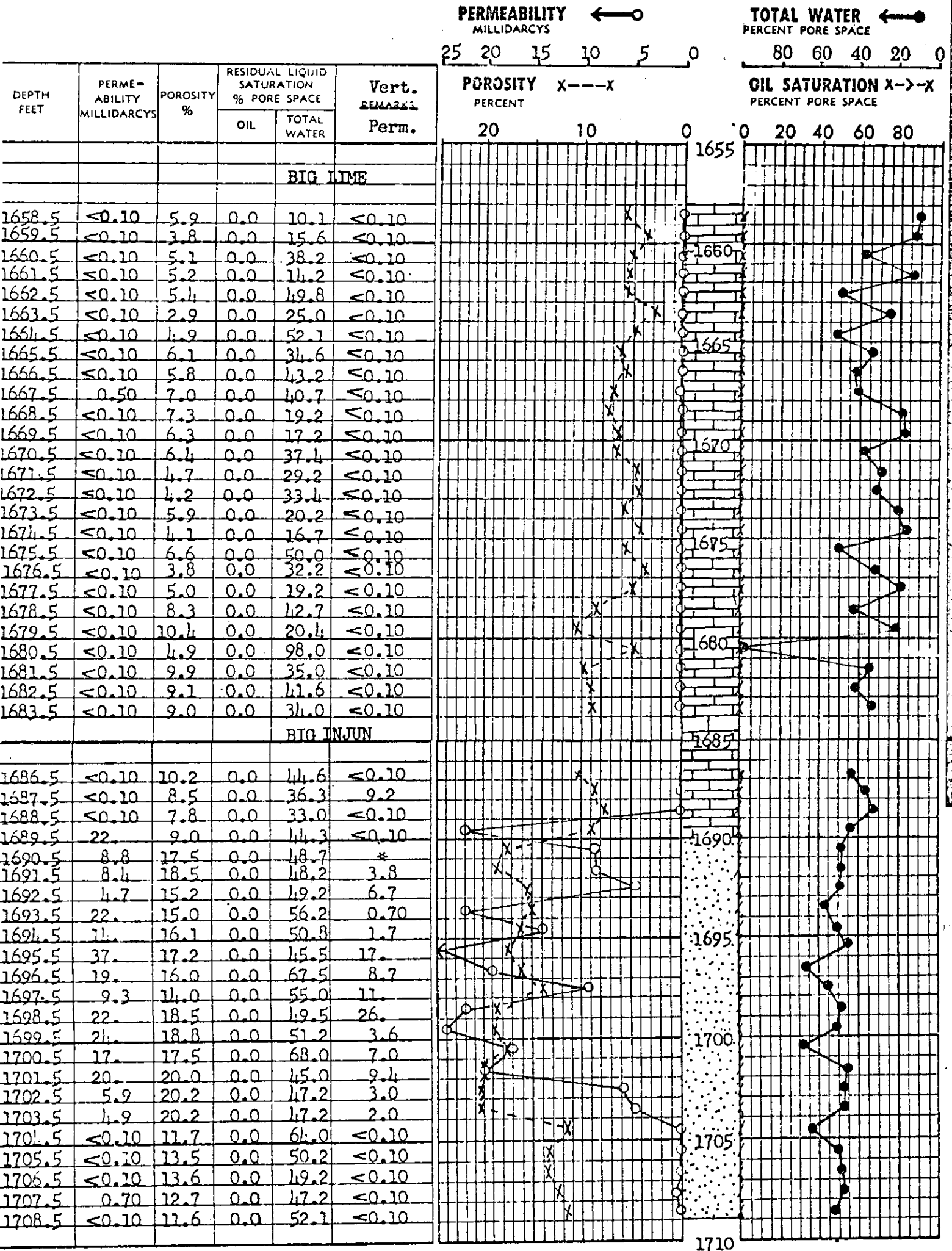


COMPANY DOMINION OIL & GAS COMPANY DATE CORED MARCH 23, 1961 FILE NO. 61W3033
SOVICK LEASE WELL NO. 1 DATE REPORT MARCH 28, 1961 ENGRS. _____
 FORMATION SEE BELOW ELEV. 922.5 G. I.
 COUNTY KANAWHA STATE W. VIRGINIA DRUG. FLUID AIR CORES DIAMOND
 REMARKS _____

CORE ANALYSIS REPORT

LIMESTONE SANDSTONE

These analyses, opinions or interpretations are based on observations and material supplied by the client to whom, and for whose exclusive and confidential use this report is made. The interpretations or opinions expressed represent the best judgment of Oilfield Research (all errors and omissions excepted) but Oilfield Research and its officers and employees assume no responsibility and make no warranty or representation as to the productivity, proper operation, or profitability of any oil, gas or other mineral well or land in connection with which such report is used or relied upon.



CORE SUMMARY

FORMATION	DEPTH, FEET	FEET CORE ANALYZED	AVERAGE PERMEABILITY MD		AVERAGE POROSITY %	AVERAGE LIQUID SATURATION, %	
			HORZ.	VERT.		OIL	WATER
LIME	1658.0 - 1684.0	26.0'			6.1	0.0	33.5
	1667.0 - 1668.0	1.0'	0.50		7.0	0.0	40.7
INJUN	1686.0 - 1709.0	23.0'			14.9	0.0	50.0
	1686.0 - 1709.0	**16.0'	15		16.6	0.0	51.3
	1686.0 - 1709.0	**14.0'		7.9			

* No Plug
 ** Samples with permeability greater than 0.10