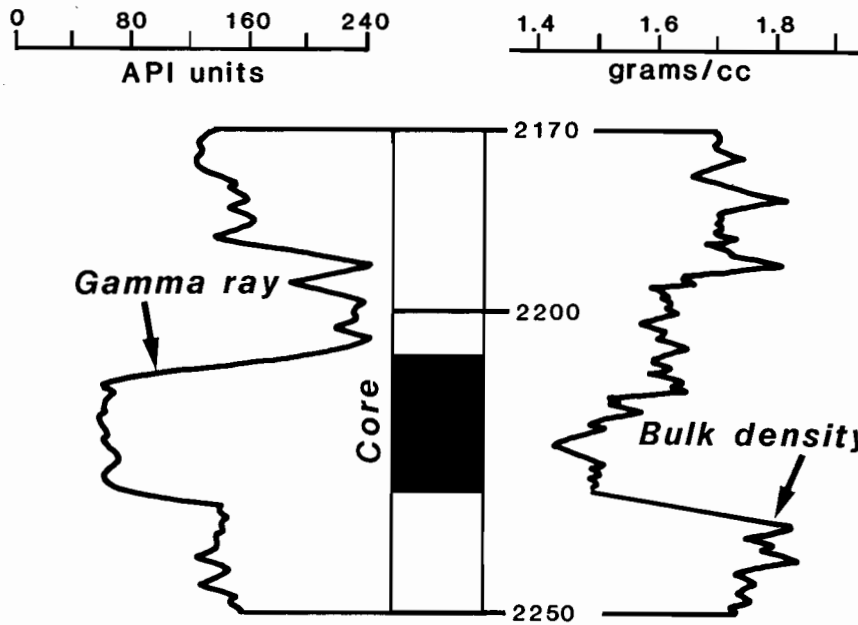


Map Location No. 24

Permit KAN-2721
 Pennzoil No. 1 H. T. Rogers
 Jefferson Dist. *unnamed*
 Kanawha Co., W. Va.

**MAP NO. 24 — NOTABLE FEATURES**

Fine sandstone interrupted by quartz pebbles; lower sandstone weakly fines upward as does upper sandstone. Lamination and crossbedding are predominant throughout core; bioturbation present throughout core but not abundant. Pyrite occurs at both top and bottom of core.

