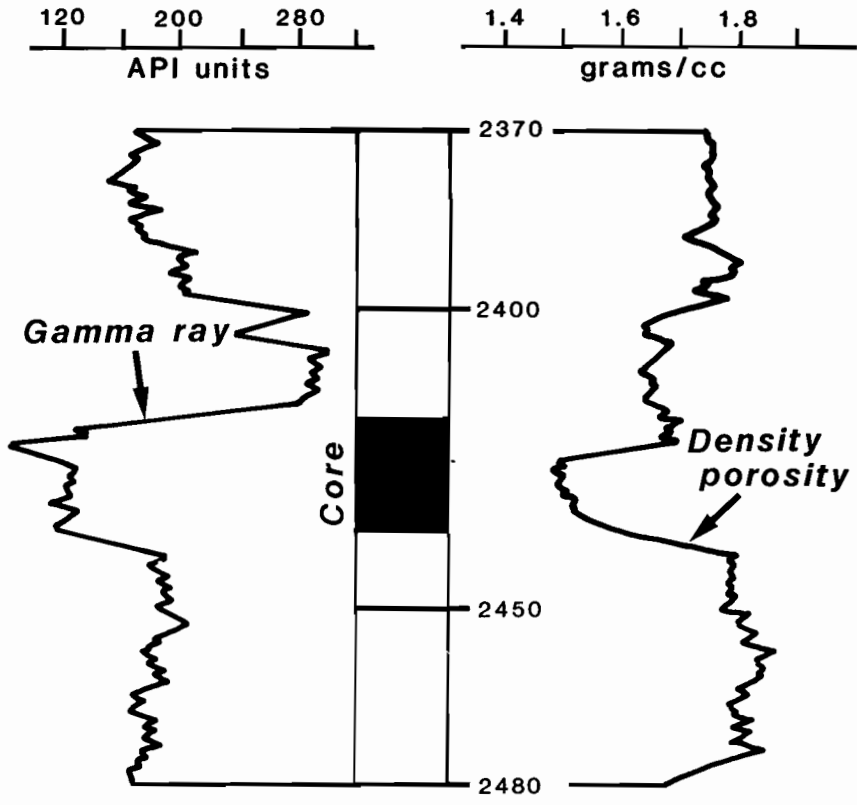


**Map Location No. 22**

Permit LIN-1511  
 Pennzoil No. 1 William T. Watts  
 Duval Dist. *Griffithsville*  
 Lincoln Co., W. Va.



**MAP NO. 22 — NOTABLE FEATURES**  
 Very fine sandstone has irregular trend, but there may be a coarsening upward cycle from 2435 to 2427 feet; quartz pebble conglomerate at top of core represents another cycle. Sedimentary structures are not abundant but include a few of most of all those found in the Berea.

MAP NUMBER 22

