

1/2

MEASURED SECTION NO. 087-2053
 LOCALITY Rock Creek Field
 SETTING ROANE

DATE 6/17/91
 STRATIGRAPHIC UNIT Big Injun
 MEASURED BY SM & AV

CORE 4634-100

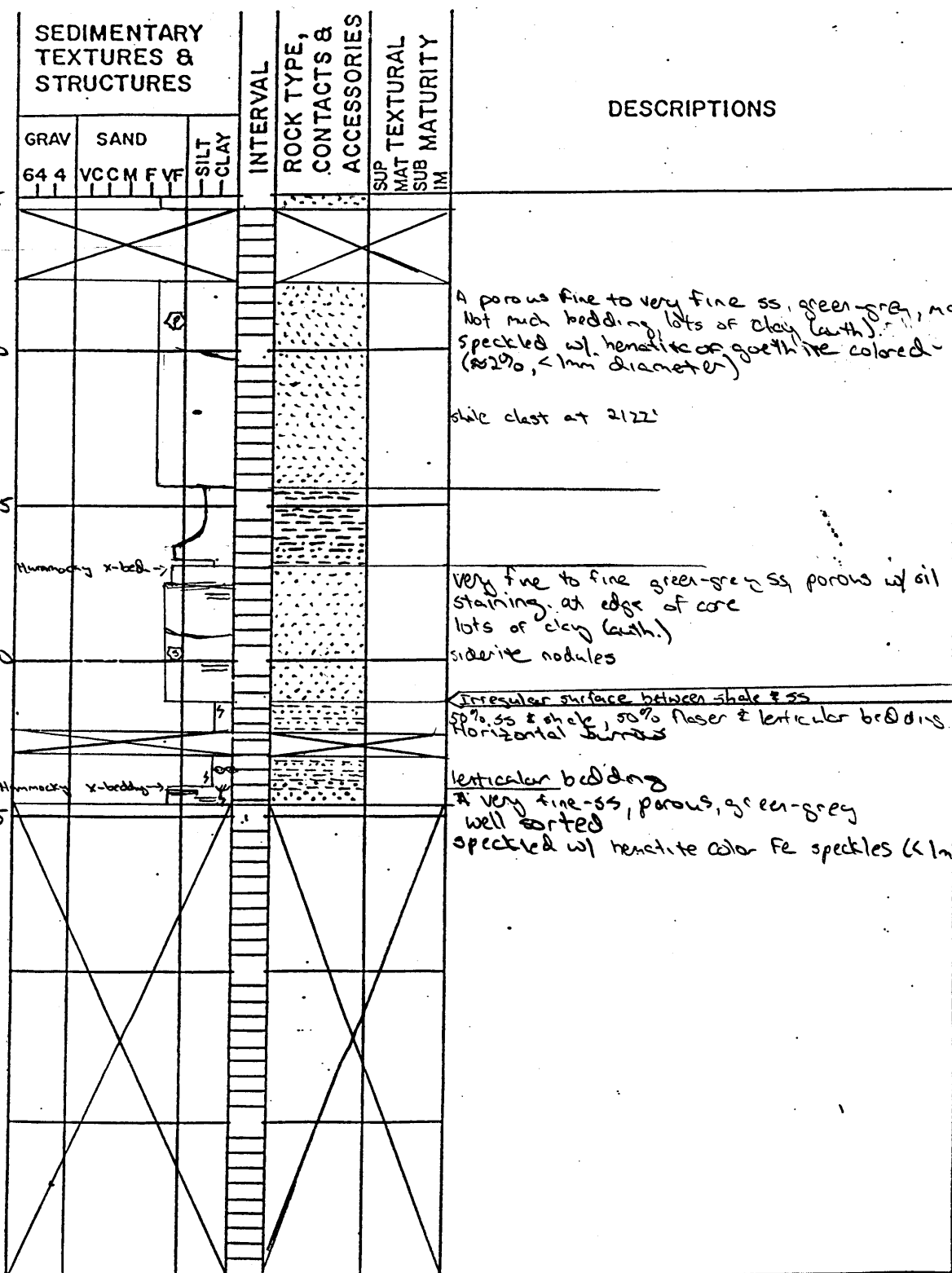
ELEVATION	SEDIMENTARY TEXTURES & STRUCTURES			INTERVAL	ROCK TYPE, CONTACTS & ACCESSORIES	TEXTURAL MATURITY	DESCRIPTIONS
	GRAV	SAND	SILT CLAY				
	64 4	VCC M F VF	SILT CLAY				
2080							
2085							tan, dolomitic, coar. quartz, packstone-wackestone, w/ low-angle planar xbeds; quartz sand is medium-grained size, rounded - well rounded, amount increases to unconformity 8-10% → ~15%: unconformity is sharp w/ dk red, iron stain - "core hardening" or "varnish"
2090							dk grey fine-very fine qtz ss, w/ faint horizontal lamination; rare ripple scale xbeds & indistinct burrows; hematitic or sideritic blebs (< 1mm diameter) common throughout; pyrite blebs & nodules (.6-2cm diameter) seen occasionally; rare, single-grain layers of white qtz granules & pebbles: minor calcite cement associated w/ the qtz pebble horizons: 2094'
2095							Strong hematite stain - may be following pyrite
2100							Siderite nodules ~.5cm diameter
2105							
2110							
2115							

/ - horizontal fracture
 S - burrows
 / / / / - planar xbeds
 = = = = - horizontal lamination
 ~ ~ ~ ~ - ripple xbeds
 ~ ~ ~ ~ - unconformity

⊙ - coar.
 ⊙ - calcite cement
 ⊕ - pyrite
 ⊕ - siderite

MEASURED SECTION NO. 087-2053
 LOCALITY Rock Creek field
 SETTING ROANE

DATE 6/17/91
 STRATIGRAPHIC UNIT Big Injun
 MEASURED BY RM & AV



w - x-bedded troughs
 w - log deposit in trough
 t - disturbance
 ⊕ - siderite nodules
 ⊗ - pyrite
 ○ - lenticular bedding

8
 2
 04

2
 2115.5

1