



DIVERSIFIED WELL LOGGING

FIVE INCH LOG

5" = 100ft

711 WEST 10TH STREET, RESERVE, LA.

1-800-280-2096

FAX 985-536-2427

COMPANY : EQT Production
 WELL : Oxford 44 512418
 FIELD : Doddridge
 COUNTY : Doddridge
 STATE : WV

DATE : 8/20/11
 API : 47-017-05986-00
 SUPERVISOR : Allen Johnson
 CREW : Ilan Baime
 UNIT : DCT-9

ABBREVIATIONS

CO - Circulated Out
 CF - Check Flow
 NB - New Bit
 SVY - Survey
 ST - Short Trip
 CG - Connection Gas
 LAT - Logged After Trip

LITHOLOGY

Anhydrite		Gypsum		Salt	
Ash		Limestone		Sand	
Cement		Limestone Sandy		Shale Green	
Chalk		Marl		Shale Grey	
Coal		No sample		Siltstone	
Dolomite					

MODIFIERS

Anhydritic	
Argillaceous	
Calcareous	
Carbonaceous	
Cherty	
Conglomeratic	
Dolomite Stringer	
Dolomitic	
Fossiliferous	
Marly	
Micaceous	
Pyritic	
Sandy	
Stylolitic	

SYMBOLS

Core (Recovered)		Fluorescence (Bright)	
Core (Lost)		Fluorescence (Dull)	
Casing Shoe		Fluorescence (Mineral)	
SWC (None)		Gas Show (Fair)	
SWC (Recovered)		Gas Show (Good)	
		Gas Show (Moderate)	
		Gas Show (Poor)	
		Oil Show (Fair)	
		Oil Show (Good)	
		Oil Show (Moderate)	
		Oil Show (Poor)	

ROP / GAMMA		DEPTH	LITH	TOTAL GAS		DESCRIPTIONS
Gamma	CPS			Total Gas	UNIT	
0	1000			0	400	
Rate of Penetration				Gas Chromatograph c1		
800	0			0	100000	
				Gas Chromatograph c2		
				0	100000	
				Gas Chromatograph c3		
				0	100000	
				Gas Chromatograph ic4		
				0	100000	
				Gas Chromatograph nc4		

BEGIN LOG @ 6330'

AJ

WOB 19.2
ROP 77.9
PP 3321
RPM 0

**MD 6333' INC 28.2
AZM 350.5 TVD 6313.47**

FMG 13

6400

SH: LGY-GY, HD,
FLKY-PLTY-LAM, SL CALC

FMG 12

FMG 13

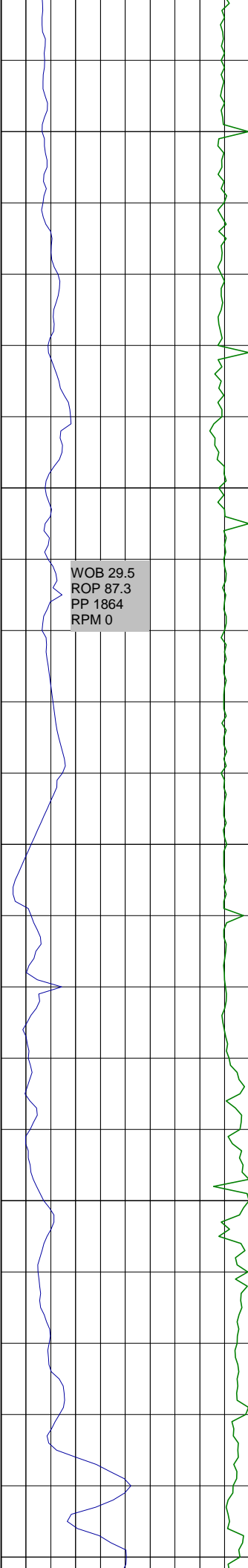
**MD 6459' INC 41.8
AZM 344.9 TVD 6416.96**

FMG 10

6500

SH: LGY-GY, HD,
FLKY-PLTY-LAM, SL CALC

FMG 16



WOB 29.5
ROP 87.3
PP 1864
RPM 0

6600

6700

FMG 20

FMG 22

SR

MD 6554' INC 54.3
AZM 341.7 TVD 6480.60

LS: LGY,CRMY, WHT, FLKY,
BRIT, XCLN

TULLY @ 6649' MD

FMG 13

MD 6650' INC 64.9
AZM 337.4 TVD 6528.39

HAMILTON @ 6695' MD

LS: LGY,CRMY, WHT, FLKY,
BRIT, XCLN

MARCELLUS @ 6734' MD

AJ

MD 6777' INC 75.8
AZM 335.0 TVD 6571.62

FMG 19

FMG 22

FMG 27

SH: GY-DGY, SLFRM-FRM,
PLTY-FLKY, CALC; TRC LMSTN

MD 6872' INC 82.9
AZM 333.8 TVD 6588.69

FMG 31

SH: DGY-BLK, SLFRM-FRM,
PLTY-FLKY, SL CALC

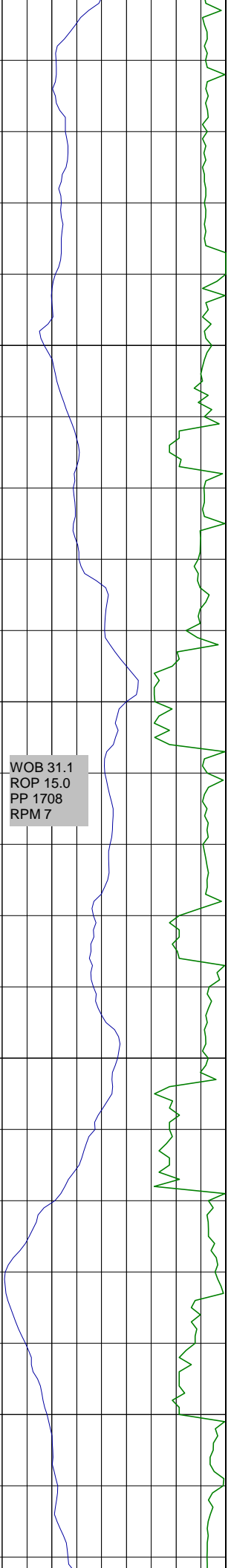
CHERRY VALLEY @ 6920' MD

FMG 17

LOWER MARCELLUS @ 6960' MD

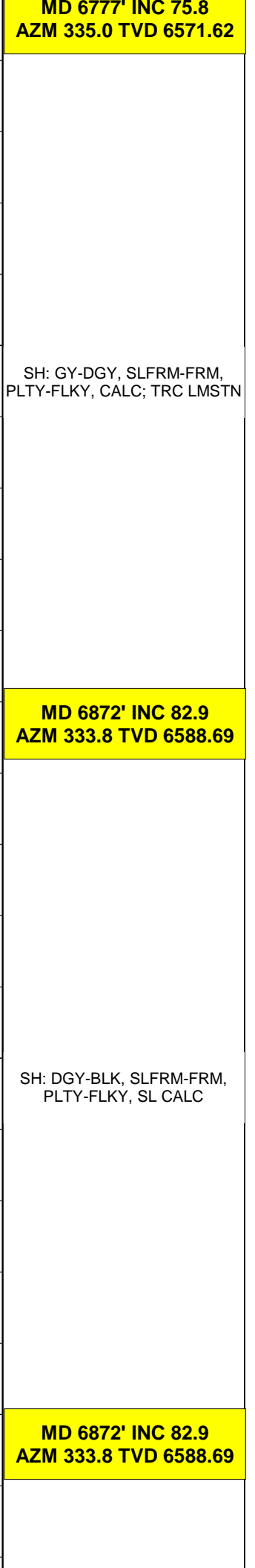
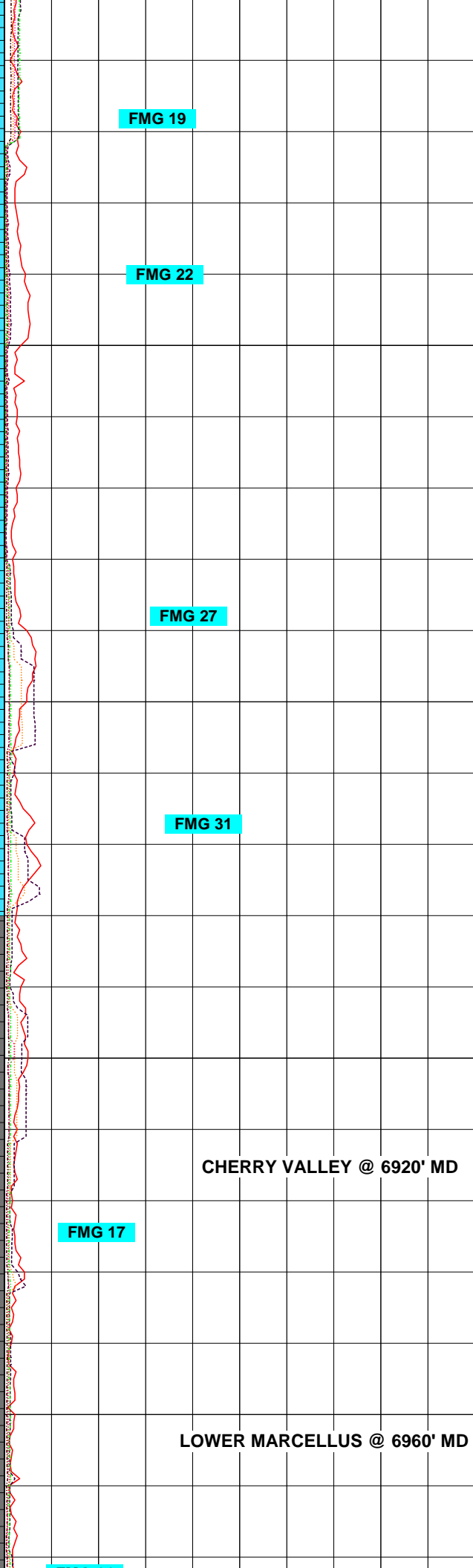
MD 6872' INC 82.9
AZM 333.8 TVD 6588.69

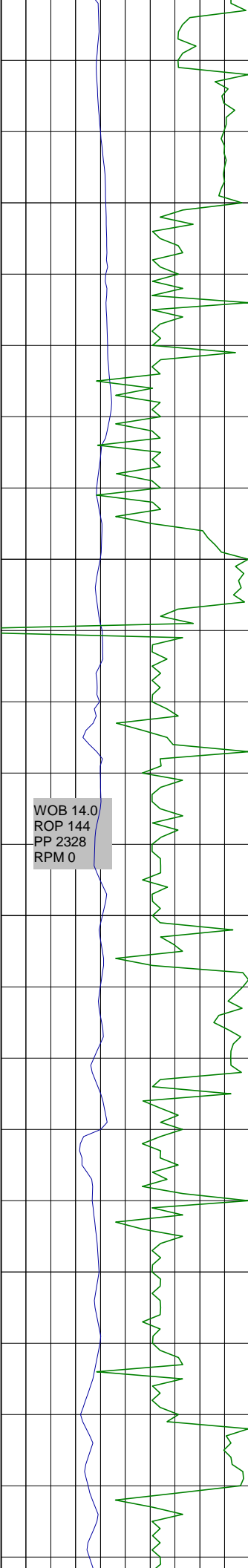
WOB 31.1
ROP 15.0
PP 1708
RPM 7



0089

0069





7000

7100

FMG 14

FMG 29

FMG 270

SH: DGY-BLK, SLFRM-FRM,
PLTY-FLKY, SL CALC

MD 7062' INC 90.2
AZM 334.2 TVD 6597.78

IB

SH: DK GRY-BLK, PLTY-BLKY,
MOD FRM, RTHY, GTY, V CALC

FMG 42

FMG 195

MD 7188' INC 89.7
AZM 337.8 TVD 6597.56

7200

CG 102

SH: BLK, PLTY-BLKY, MOD
FRM, RTHY, GTY, V CALC

CG 92

**MD 7251' INC 90.0
AZM 336.8 TVD 6597.72**

CG 220

WOB 15.1
ROP 207.5
PP 2359
RPM 64

CG 152

SH: BLK, PLTY-BLKY, MOD
FRM, RTHY, GTY, V CALC

7300

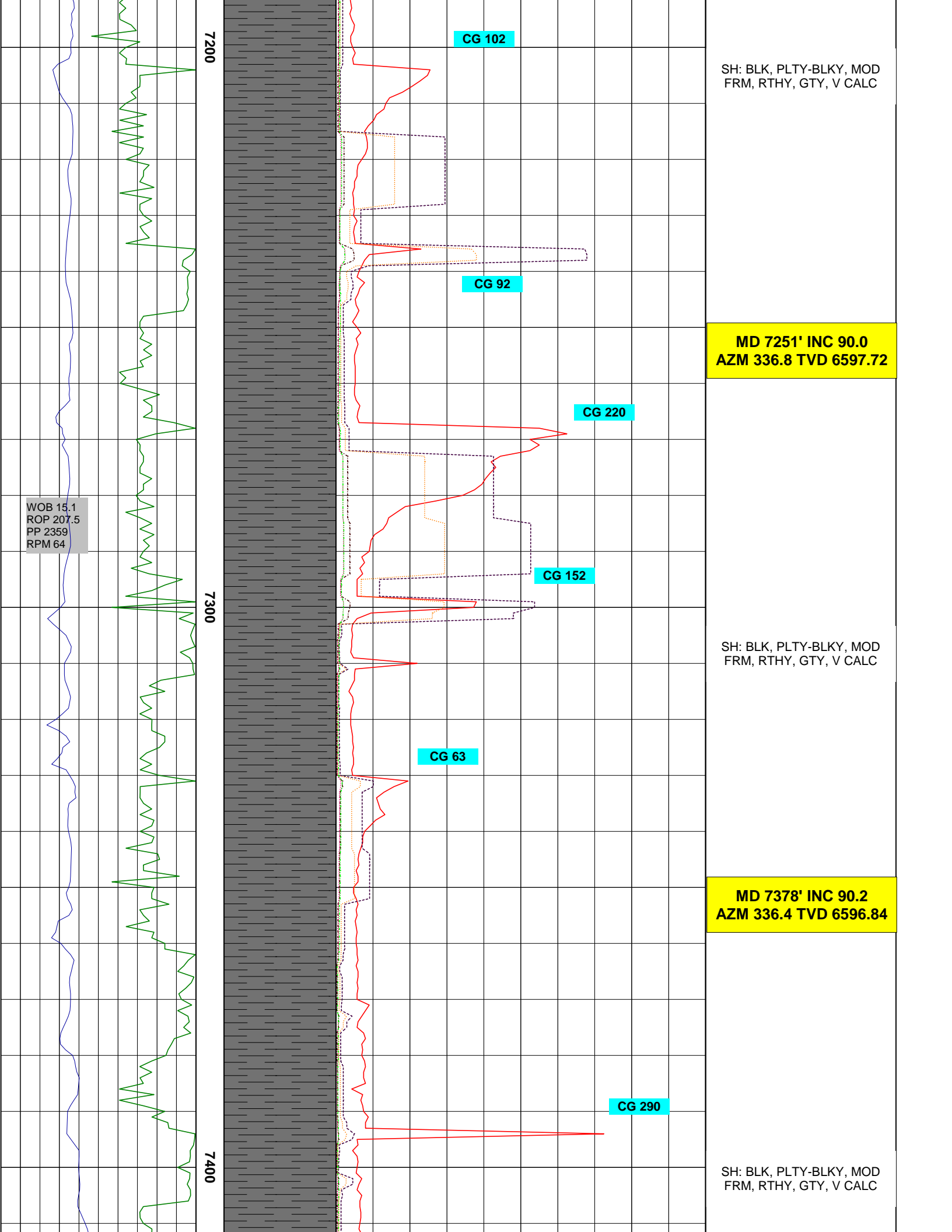
CG 63

**MD 7378' INC 90.2
AZM 336.4 TVD 6596.84**

CG 290

7400

SH: BLK, PLTY-BLKY, MOD
FRM, RTHY, GTY, V CALC



WOB 17.3
ROP 246.4
PP 2373
RPM 75

7500

7600

CG 280

CG 280

CG 280

CG 280

CG 240

FMG 173

MD 7442' INC 89.5
AZM 334.7 TVD 6597.01

SH: BLK, PLTY-BLKY, MOD
FRM, RTHY, GTY, SLTY, CALC

MD 7569' INC 89.7
AZM 333.5 TVD 6597.89

SH: BLK, PLTY-BLKY, MOD
FRM, RTHY, GTY, SLTY, CALC

WOB 16.3
ROP 274.6
PP 2438
RPM 56

7700

7800

FMG 151

MD 7696' INC 91.6
AZM 334.2 TVD 6595.52

AJ

SH: BLK, PLTY-BLKY, MOD
FRM, RTHY, GTY, SLTY, CALC

FMG 360

MD 7760' INC 92.1
AZM 334.5 TVD 6593.45

FMG 290

SH: BLK, PLTY-BLKY, MOD
FRM, RTHY, GTY, SLTY, CALC;
TRC LMSTN

FMG 290

MD 7886' INC 90.4

MD 7880' INC 90.4
AZM 334.3 TVD 6589.11

WOB 18.8
ROP 225.7
PP 2476
RPM 62

7900

SH: BLK, PLTY-BLKY, MOD
FRM, RTHY, GTY, SLTY, CALC;
TRC LMSTN

FMG 260

FMG 290

MD 7950' INC 90.8
AZM 334.3 TVD 6588.44

FMG 270

8000

SH: BLK, PLTY-BLKY, MOD
FRM, RTHY, GTY, SLTY, CALC;
TRC LMSTN

FMG 320

FMG 360

MD 8077' INC 90.9
AZM 332.8 TVD 6586.61

WOB 8.0

ROP 78.3
PP 2218
RPM 0

WOB 18.8
ROP 230.9
PP 2521
RPM 78

8100

8200

FMG 320

SH: BLK, PLTY-BLKY, MOD
FRM, RTHY, GTY, SLTY, CALC

FMG 330

MD 8140' INC 92.2
AZM 333.3 TVD 6584.91

FMG 300

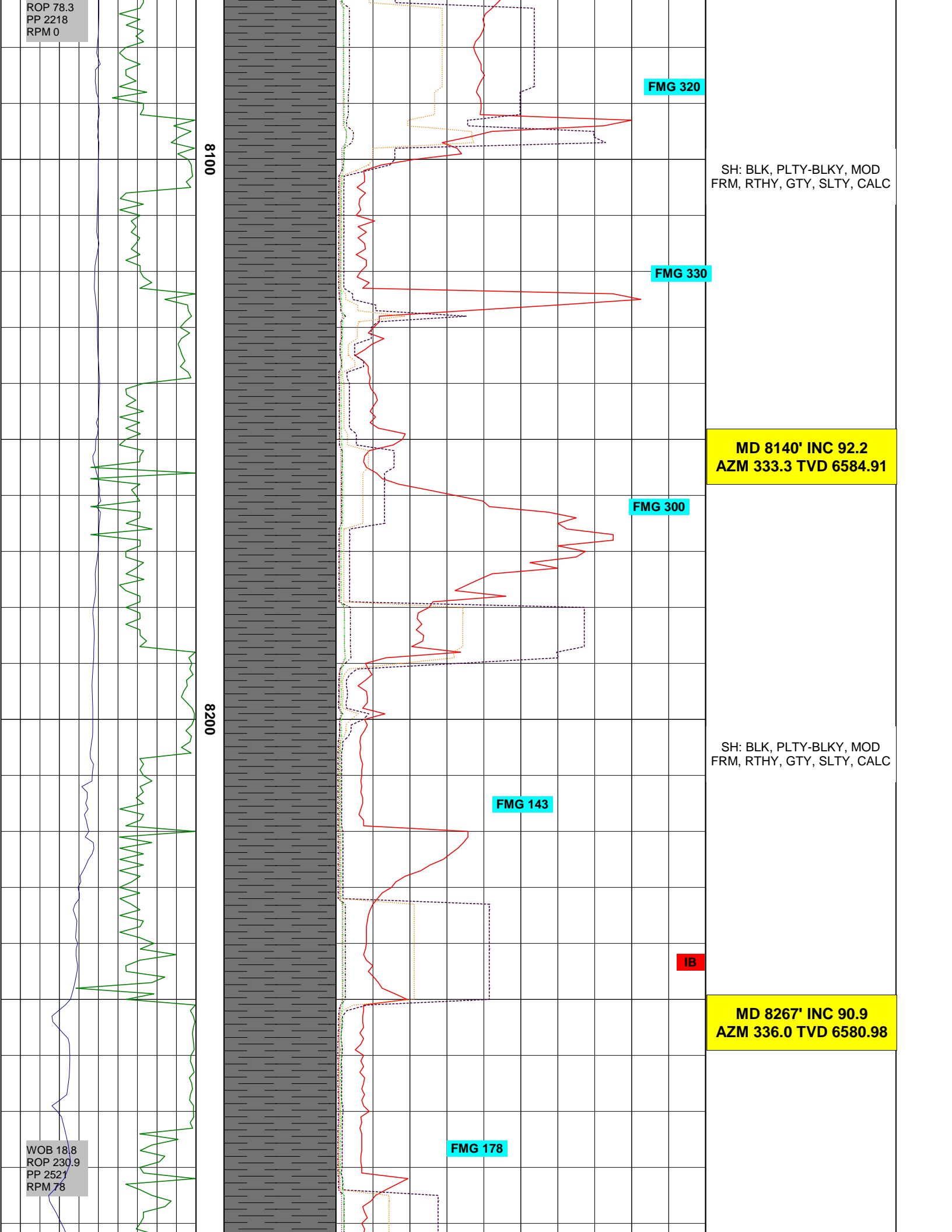
SH: BLK, PLTY-BLKY, MOD
FRM, RTHY, GTY, SLTY, CALC

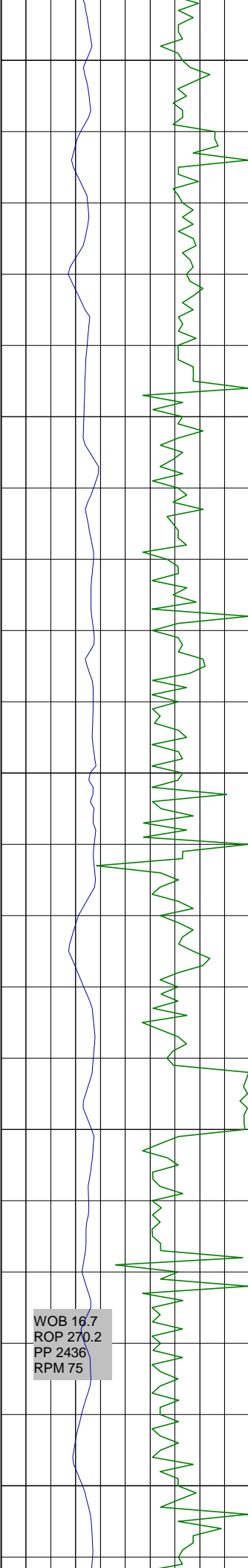
FMG 143

IB

MD 8267' INC 90.9
AZM 336.0 TVD 6580.98

FMG 178





8300

8400

8500

FMG 126

FMG 120

FMG 123

FMG 36

FMG 330

SH: BLK, PLTY, BLKY, MOD
FRM, ORG, GTY, TR PYR, V
CALC

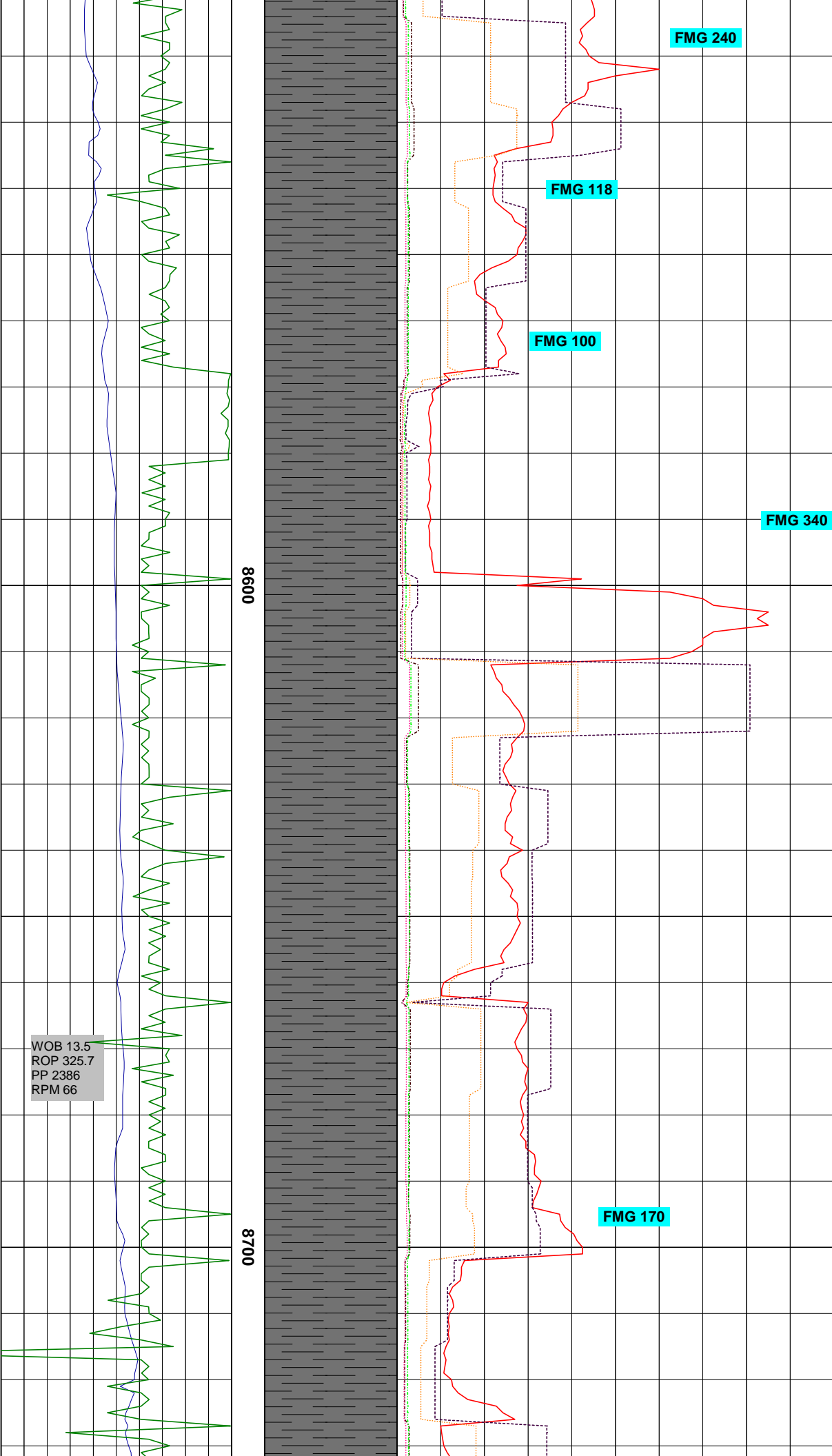
**MD 8393' INC 91.1
AZM 336.6 TVD 6578.89**

SH: BLK, PLTY, BLKY, MOD
FRM, ORG, GTY, TR PYR, V
CALC

**MD 8457' INC 90.1
AZM 336.2 TVD 6578.22**

SH: BLK, PLTY, BLKY, MOD
FRM, ORG, GTY, TR PYR, V
CALC

WOB 16.7
ROP 270.2
PP 2436
RPM 75



FMG 240

FMG 118

FMG 100

FMG 340

FMG 170

MD 8583' INC 89.4
AZM 334.8 TVD 6578.28

SH: BLK, PLTY, BLKY, MOD
FRM, ORG, GTY, TR PYR, V
CALC

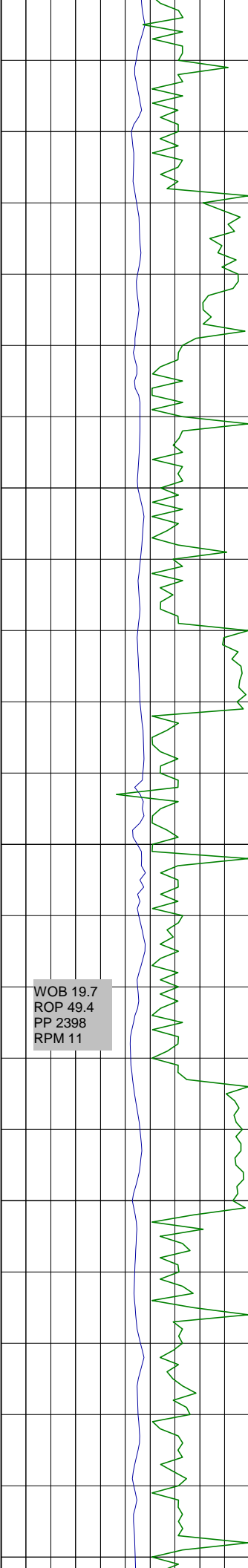
MD 8647' INC 89.5
AZM 334.1 TVD 6578.89

SH: BLK, PLTY, BLKY, MOD
FRM, RTHY, WXY, SLI SLTY,
CALC

8600

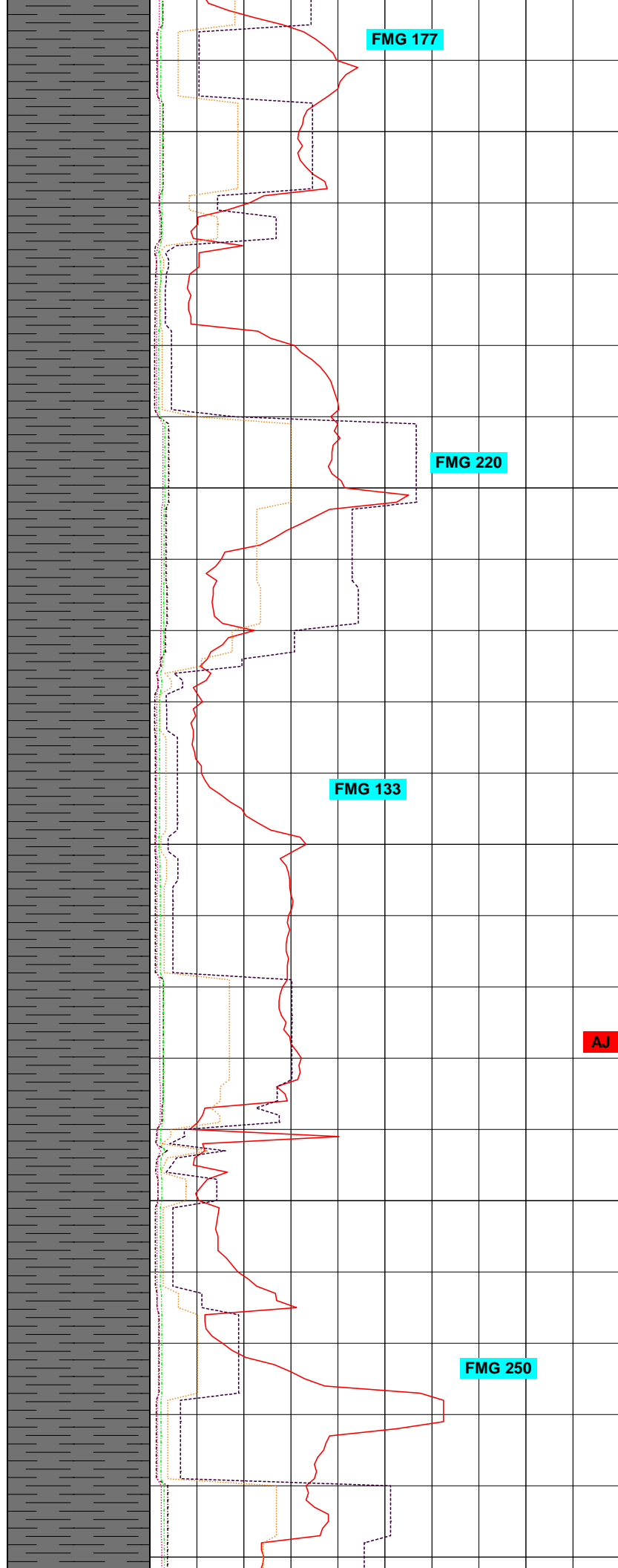
8700

WOB 13.5
ROP 325.7
PP 2386
RPM 66



0080

0068



FMG 177

FMG 220

FMG 133

FMG 250

AJ

MD 8773' INC 90.3
AZM 333.8 TVD 6579.66

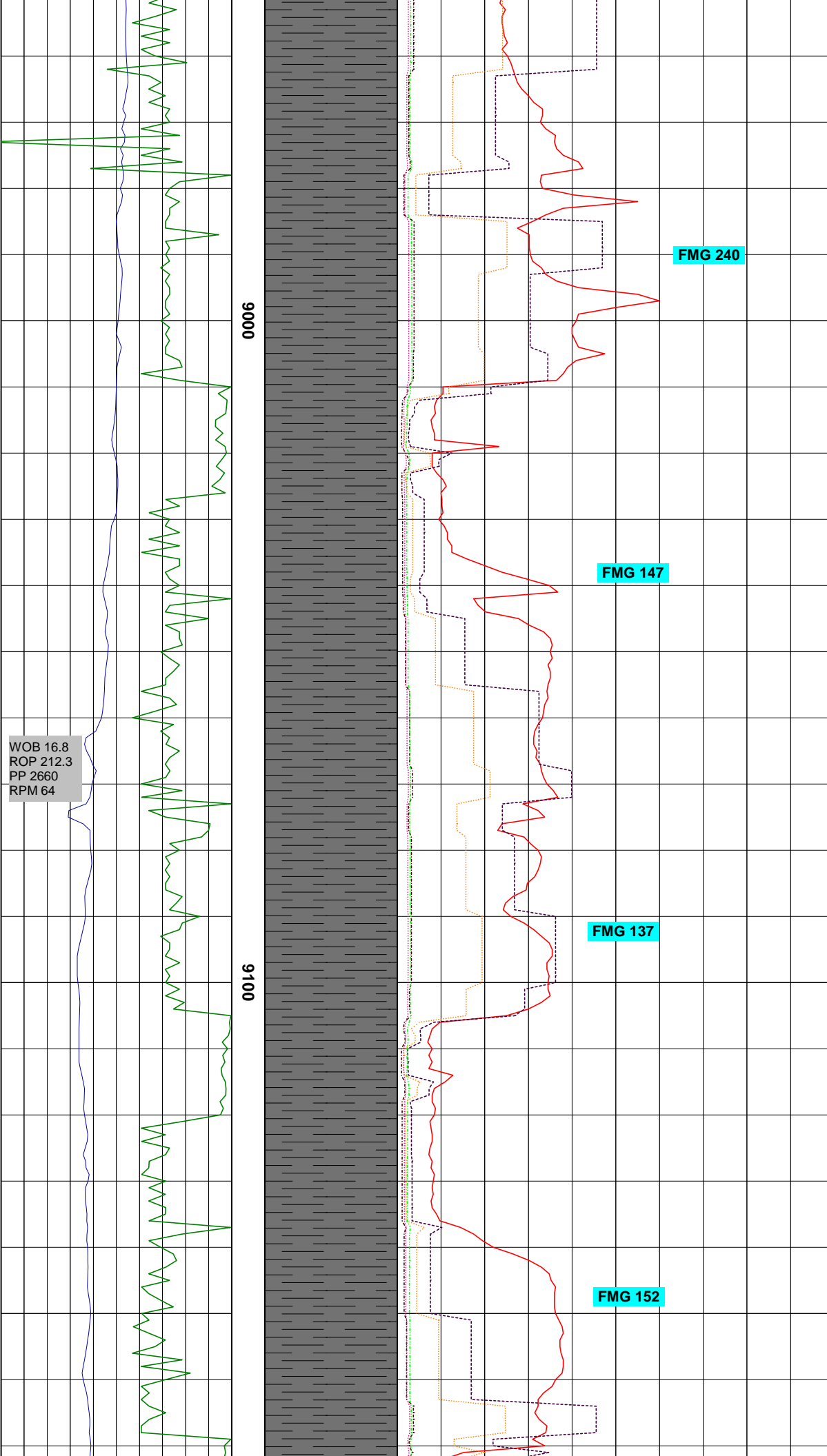
SH: BLK, PLTY, BLKY, MOD
FRM, RTHY, WXY, SLI SLTY,
CALC

MD 8836' INC 90.6
AZM 334.2 TVD 6579.16

SH: BLK, PLTY, BLKY, MOD
FRM, RTHY, WXY, SLI SLTY,
CALC

MD 8963' INC 90.8

MD 8963' INC 90.8
AZM 333.8 TVD 6577.61

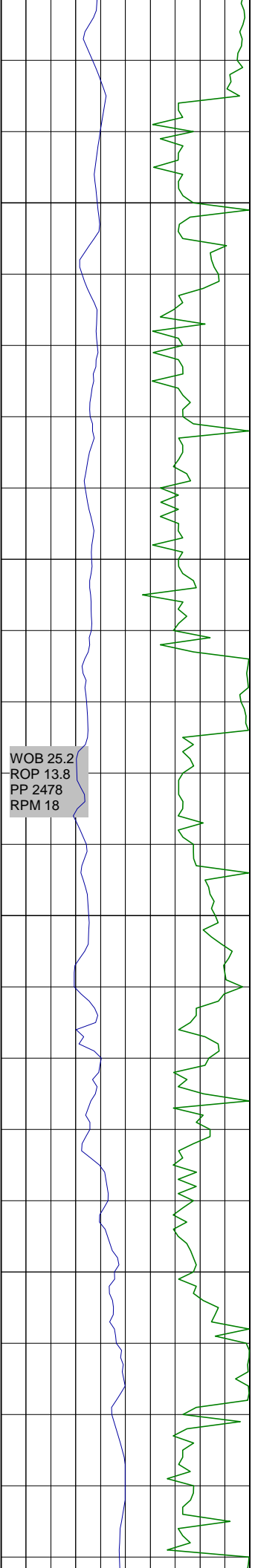


SH: BLK, PLTY, BLKY, MOD
FRM, RTHY, WXY, SLI SLTY,
CALC

MD 9090' INC 92.3
AZM 333.9 TVD 6573.78

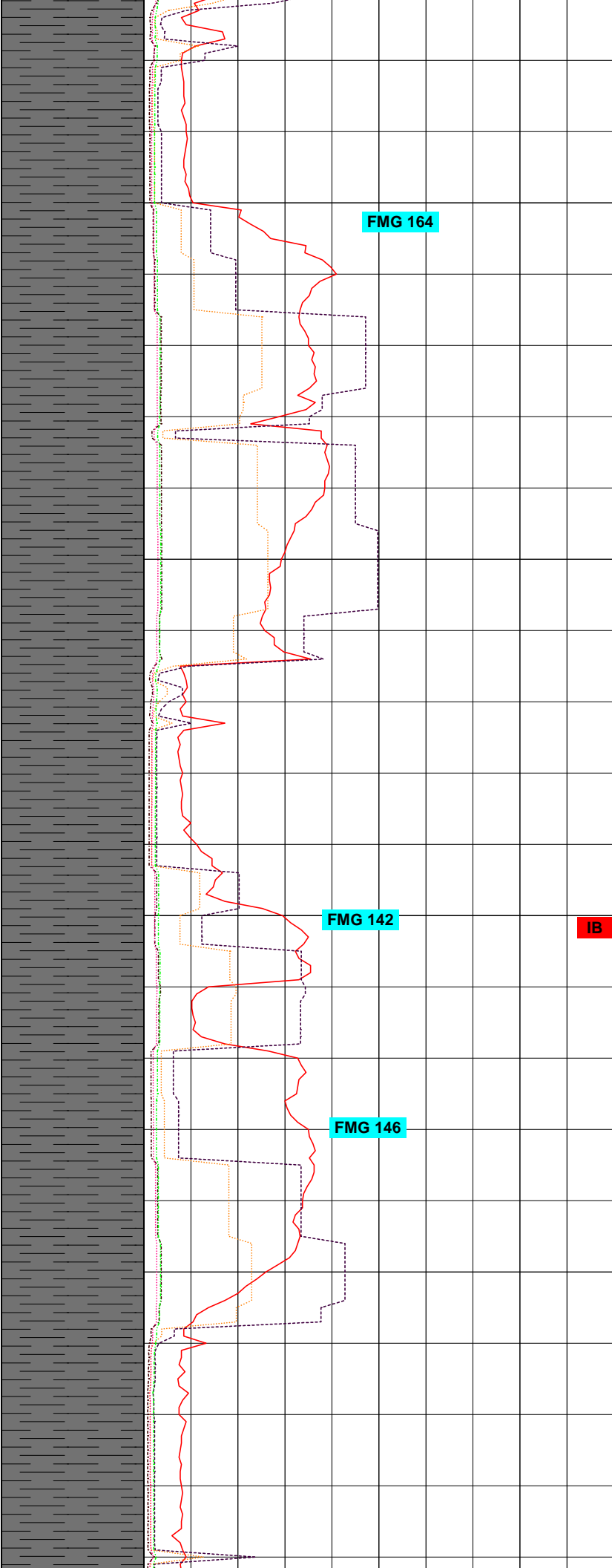
SH: BLK, PLTY-BLKY, MOD
FRM, RTHY, GTY, SLTY, CALC;
TRC LMSTN

MD 9153' INC 91.2
AZM 334.9 TVD 6571.86



9200

9300

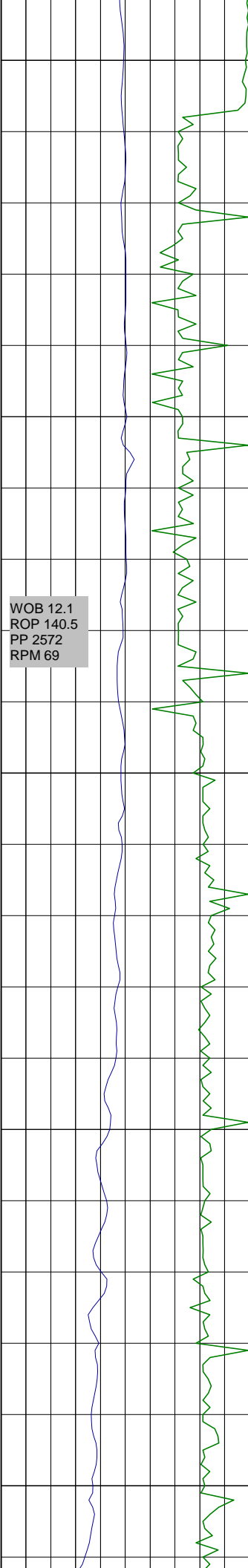


SH: BLK, PLTY-BLKY, MOD
FRM, RTHY, GTY, SLTY, CALC;
TRC LMSTN

MD 9280' INC 89.2
AZM 337.6 TVD 6571.65

IB

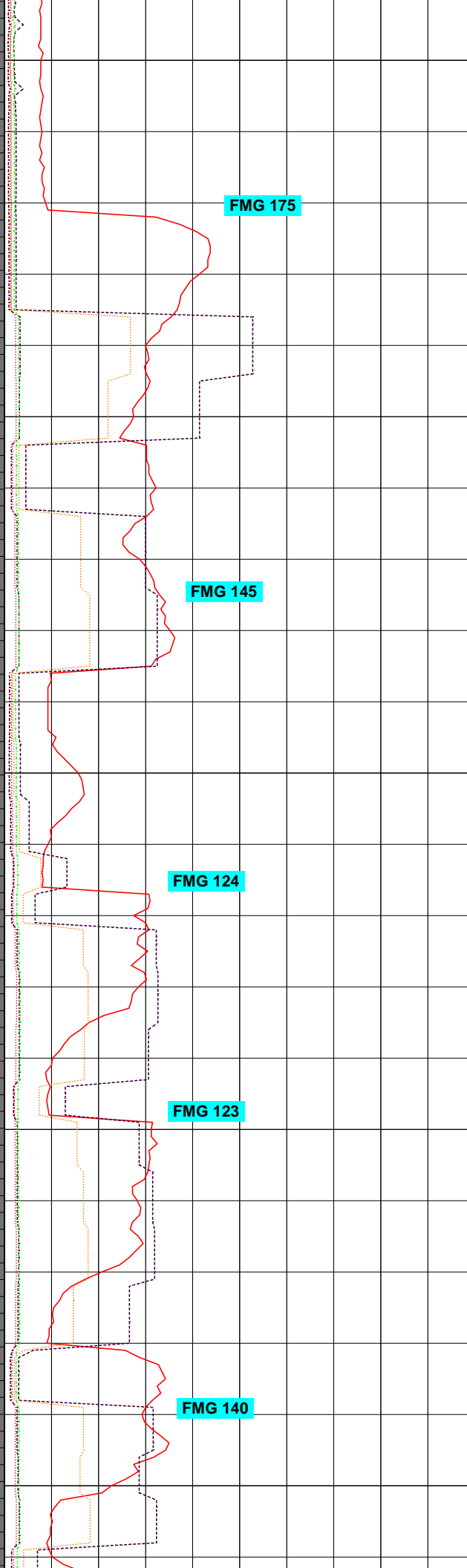
SH: BLK, PLTY-BLKY, MOD
FRM, RTHY, GTY, SLTY, CALC;
TRC LMSTN



9400

9500

9600

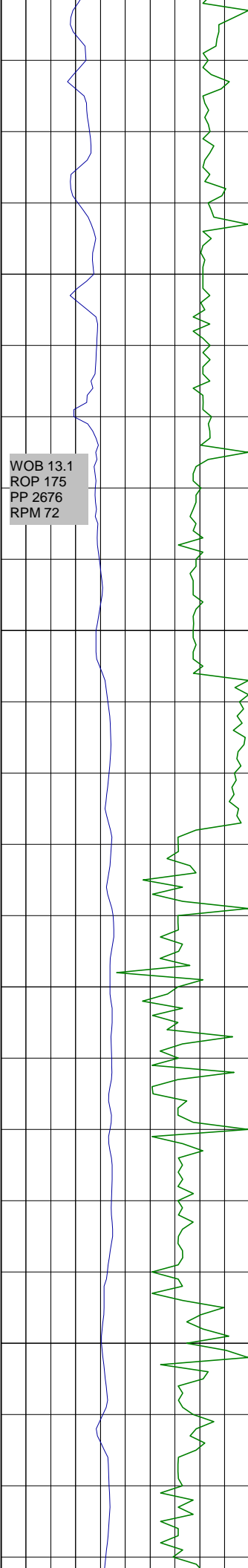


MD 9406' INC 90.2
AZM 334.9 TVD 6573.52

SH: BLK, PLTY-BLKY, MOD
FRM, ORG, GTY, SLTY, CALC

MD 9533' INC 90.4
AZM 333.7 TVD 6572.85

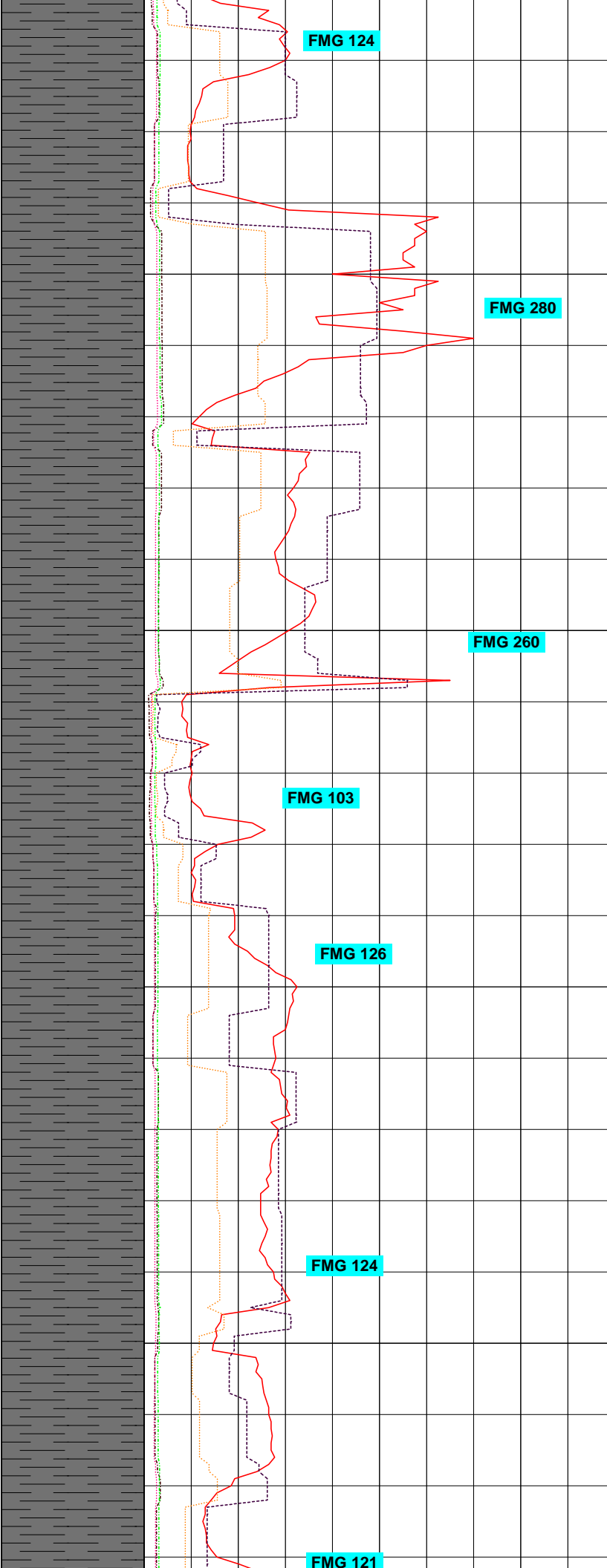
SH: BLK, PLTY-BLKY, MOD
FRM, ORG, GTY, SLTY, CALC



WOB 13.1
 ROP 175
 PP 2676
 RPM 72

9700

9800



FMG 124

FMG 280

FMG 260

FMG 103

FMG 126

FMG 124

FMG 121

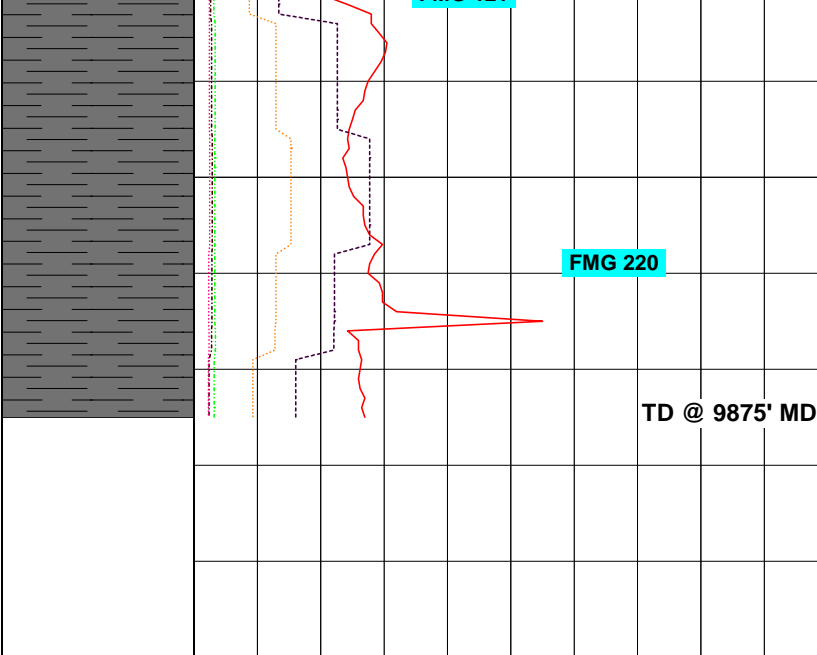
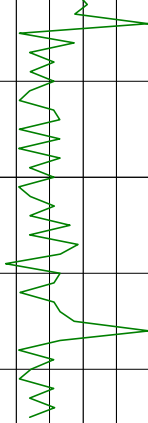
MD 9660' INC 90.9
 AZM 333.0 TVD 6571.16

SH: BLK, PLTY, BLKY, MOD
 FRM, RTHY, GTY, SLI SLTY,
 CALC

MD 9787' INC 90.0
 AZM 335.0 TVD 6570.51

SH: BLK, PLTY, BLKY, MOD
FRM, RTHY, GTY, SLI SLTY, SL
CALC

WOB 7.0
ROP 264.3
PP 2565
RPM 66



FMG 220

TD @ 9875' MD

Gamma
CPS 1000



DIVERSIFIED WELL LOGGING

711 WEST 10TH STREET, RESERVE, LA.

FIVE INCH LOG
5" = 100ft
1-800-280-2096
FAX 985-536-2427

COMPANY : EQT Production
WELL : Oxford 44 512418
FIELD : Doddridge
COUNTY : Doddridge
STATE : WV

DATE : 8/20/11
API : 47-017-05986-00
SUPERVISOR : Allen Johnson
CREW : Ilan Baime
UNIT : DCT-9

ABBREVIATIONS

- CO - Circulated Out
- CF - Check Flow
- NB - New Bit
- SVY - Survey
- ST - Short Trip
- CG - Connection Gas
- LAT - Logged After Trip

LITHOLOGY

Anhydrite		Gypsum		Salt	
Ash		Limestone		Sand	
Cement		Limestone Sandy		Shale Green	
Chalk		Marl		Shale Grey	
Coal		No sample		Siltstone	
Dolomite					

MODIFIERS

- Anhydritic
- Argillaceous
- Calcareous
- Carbonaceous
- Cherty
- Conglomeratic
- Dolomite Stringer

SYMBOLS

- Core (Recovered)
- Core (Lost)

- Fluorescence (Bright)
- Fluorescence (Dull)
- Fluorescence (Mineral)
- Gas Show (Fair)
- Gas Show (Good)
- Gas Show (Moderate)

Dolomitic
Fossiliferous
Marly
Micaceous
Pyritic
Sandy
Stylolitic



Casing Shoe
SWC (None)
SWC (Recovered)



Gas Show (Poor)
Oil Show (Fair)
Oil Show (Good)
Oil Show (Moderate)
Oil Show (Poor)

