

5150

49-00891

COMPANY	: WACO OIL & GAS, INC	OTHER SERVICES:	N/A
WELL	: 5150		N/A
FIELD	: LOVERIDGE MINE		N/A
COUNTY	: MARION		N/A
STATE	: WV		N/A
LOCATION	: DENTS RUN		
SECTION	: N/A		
TOWNSHIP	: N/A		
RANGE	: N/A		
API NO.	: N/A		
UNIQUE WELL ID.	: N/A		
PERMANENT DATUM	: GL	ELEVATION KB	: N/A
LOG MEASURED FROM:	RF	ELEVATION DF	: N/A
DRL MEASURED FROM:	RF	ELEVATION GL	: N/A
DATE	: 04/30/13	RIG NUMBER	: 6
DEPTH DRILLER	: 2000	LOGGER TD	:
BIT SIZE	: 6.25	ARRIVAL TIME	:
LOG TOP	: -1.70	DEPARTURE TIME:	
LOG BOTTOM	: 2063.40	CIRC STOPPED	: N/A
CASING OD	: N/A		
CASING BOTTOM	: N/A		
CASING TYPE	: SURFACE		
BOREHOLE FLUID	: MUD		
RM TEMPERATURE	: N/A		
MUD RES	: N/A		
MUD WEIGHT	: N/A		
WITNESSED BY	: SW		
RECORDED BY	: KEVIN WEST		
REMARKS 1	: LOG CURVES RUN: CALIPER, CCL & NATURAL GAMMA.		
REMARKS 2	: LOG MEASURED FROM GROUND LEVEL.		

Final log with cuts and window.

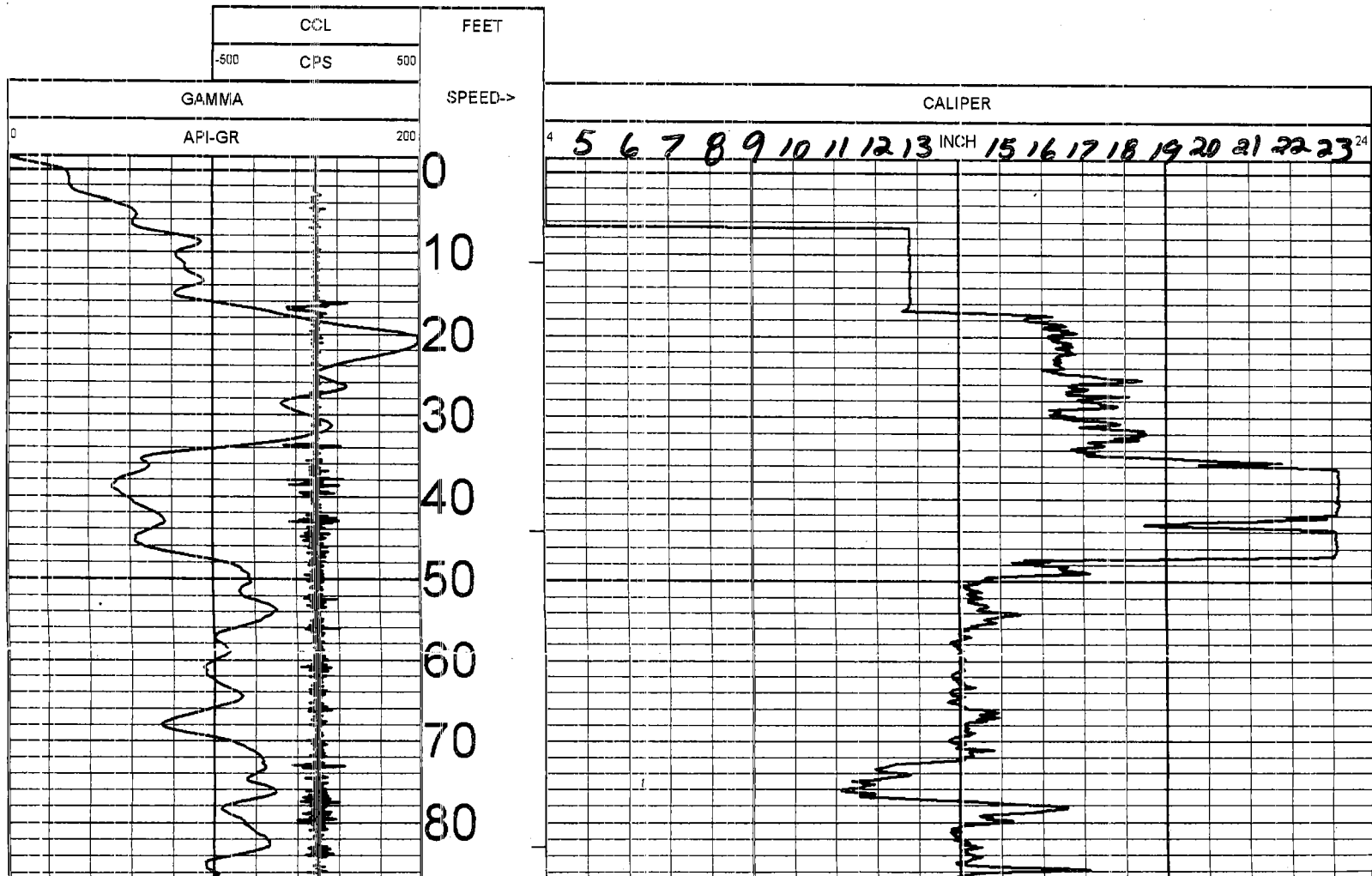
ALL SERVICES PROVIDED SUBJECT TO STANDARD TERMS AND CONDITIONS

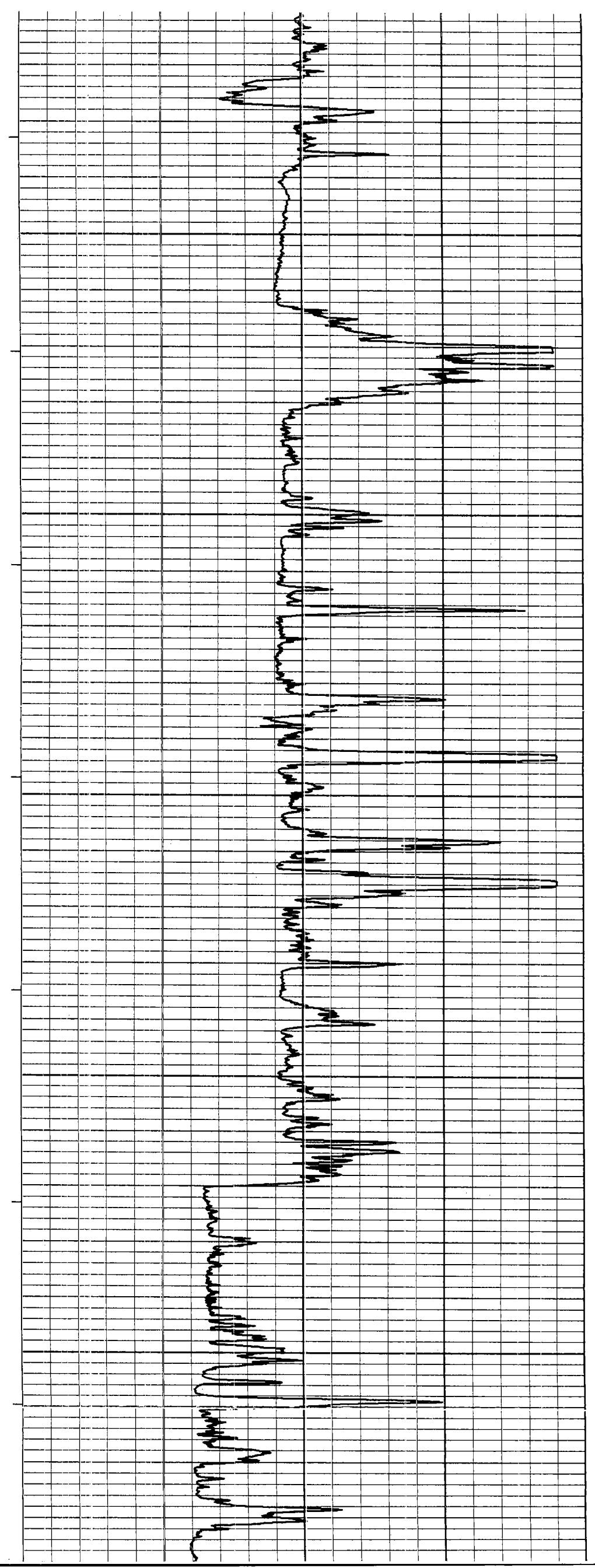
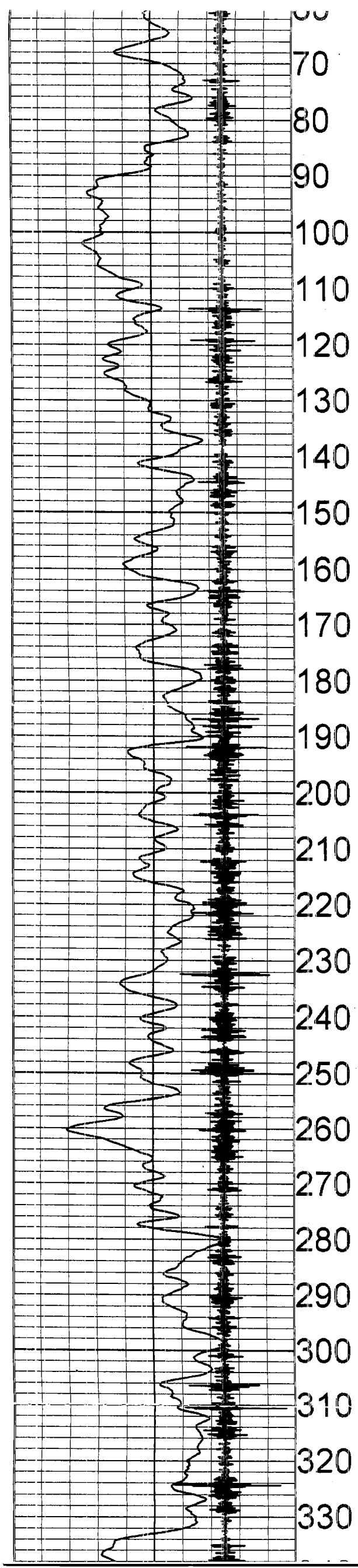
5" Caliper Log 5150 04/30/13

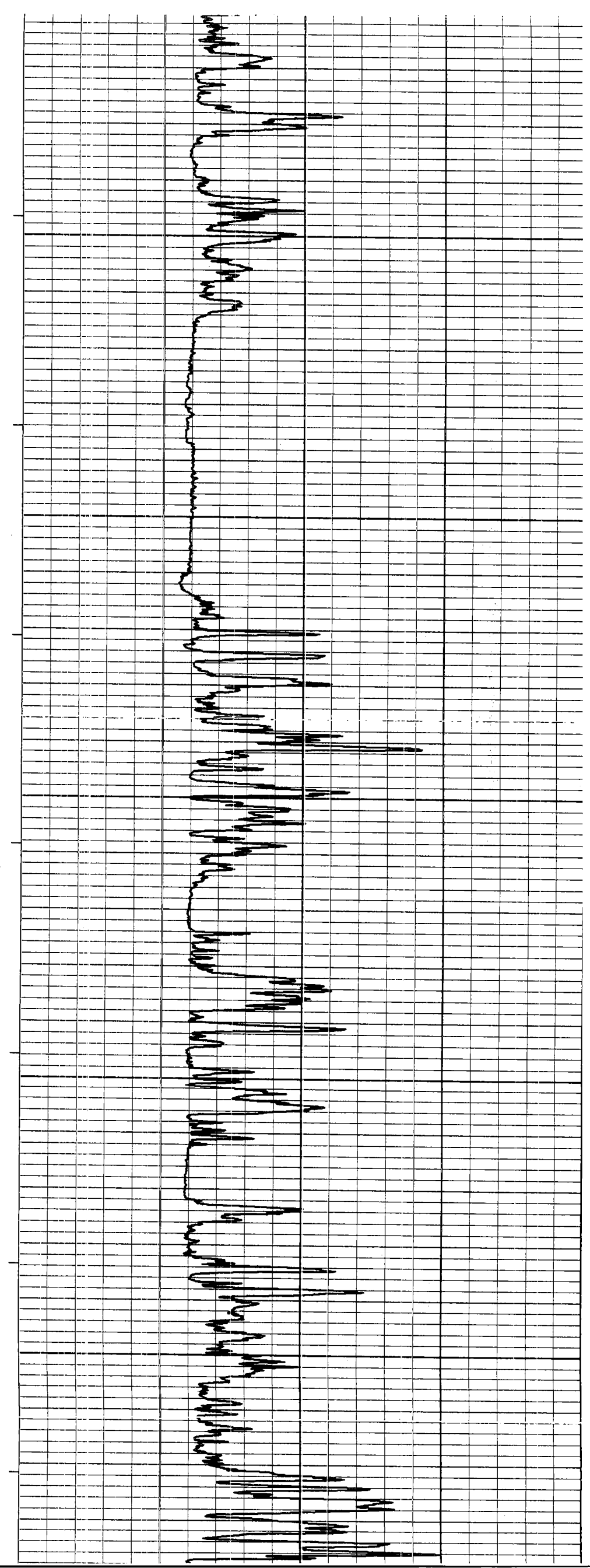
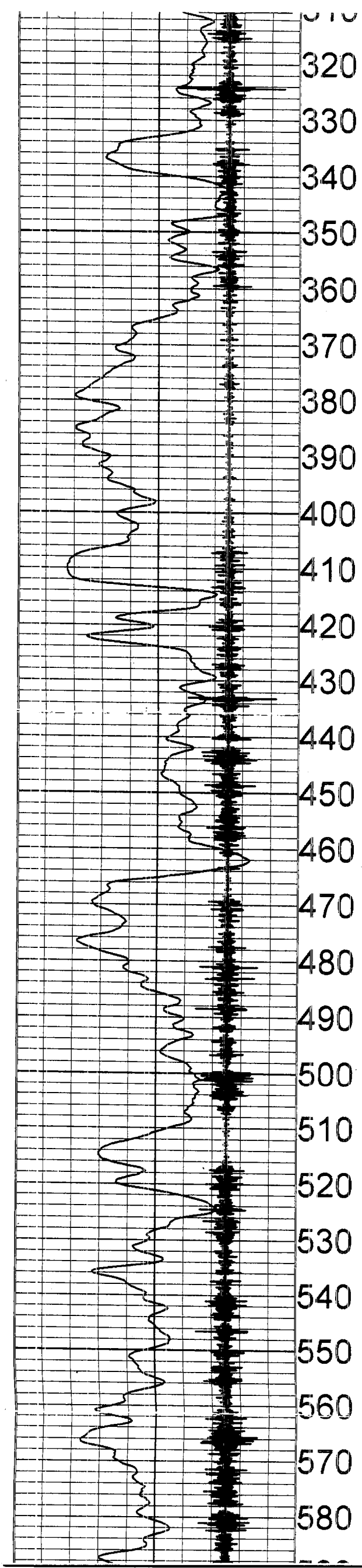
LOG PARAMETERS

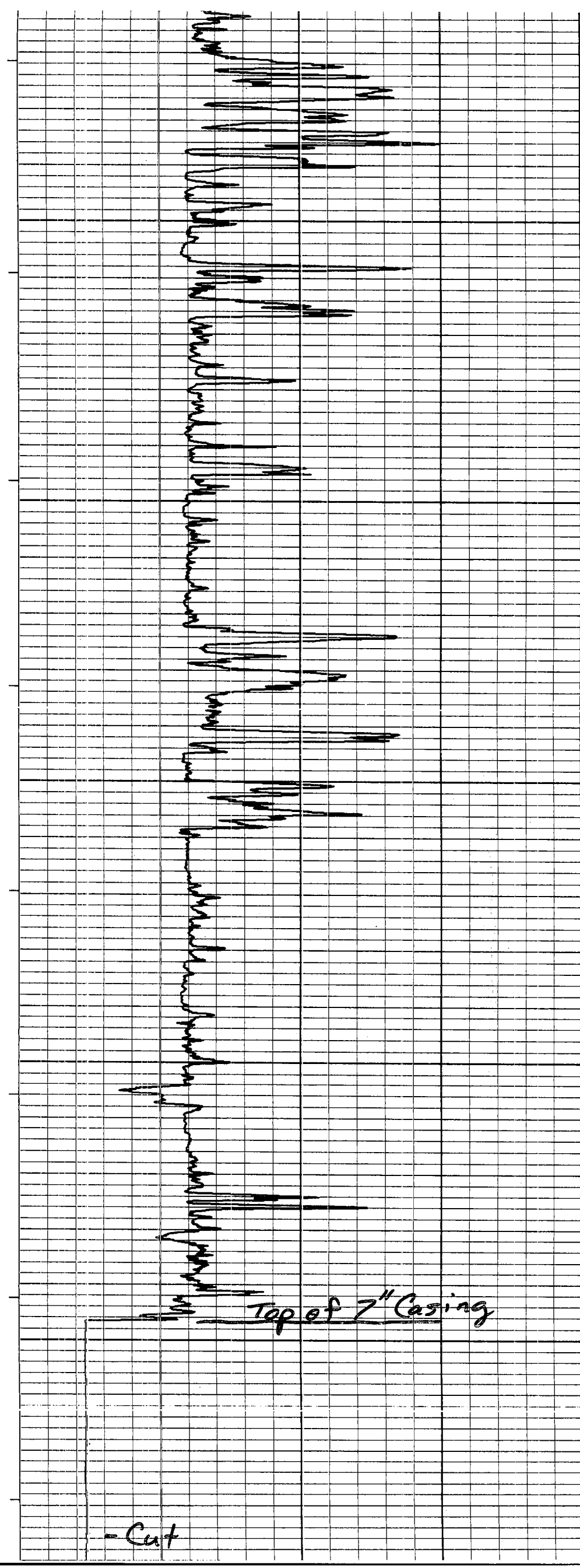
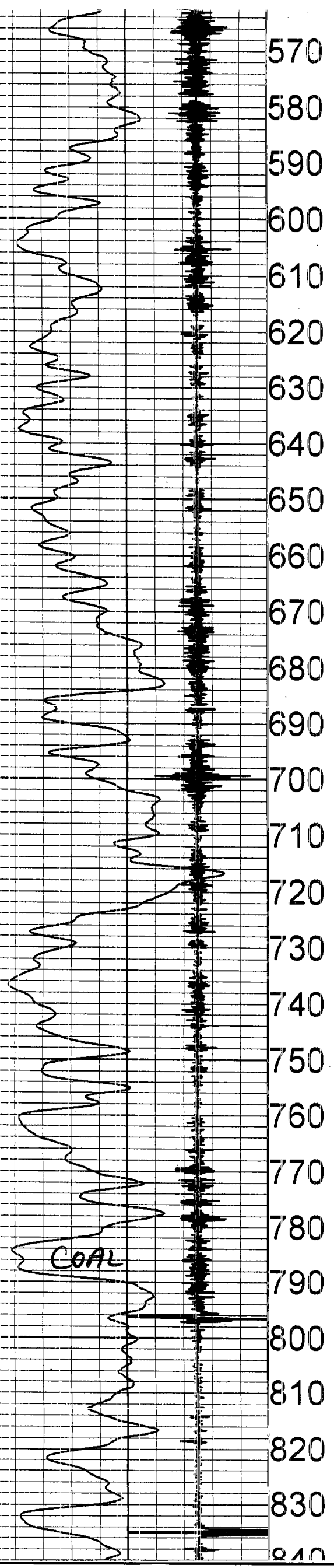
MATRIX DENSITY : 2.65 NEUTRON MATRIX : SANDSTONE MATRIX DELTA T : 54
 MAGNETIC DECL : -8.6 ELECT. CUTOFF : 99999 BIT SIZE : 6.25

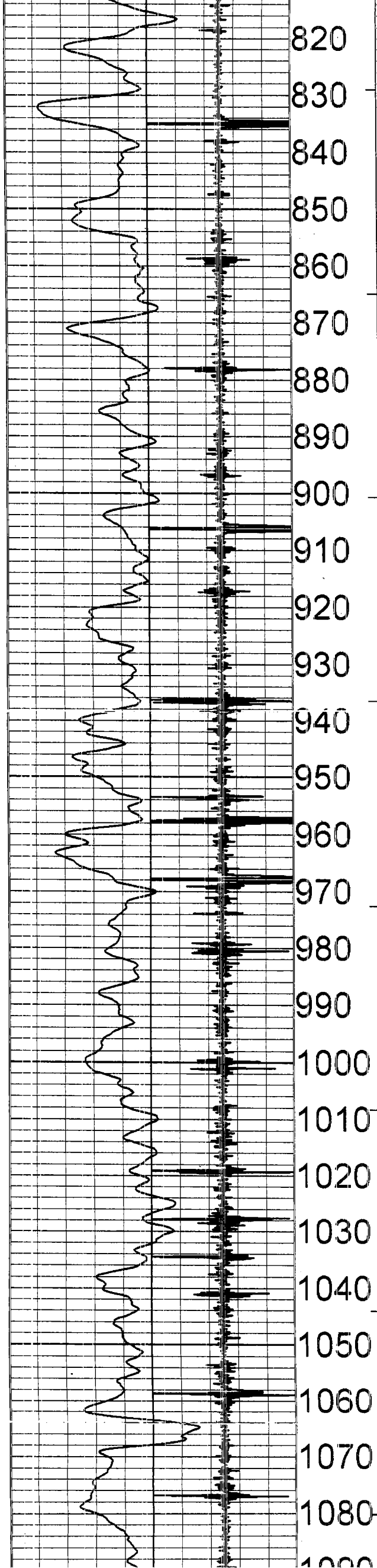
PRESENTATION NAME/DATE = 6074A.0 11/01/2012









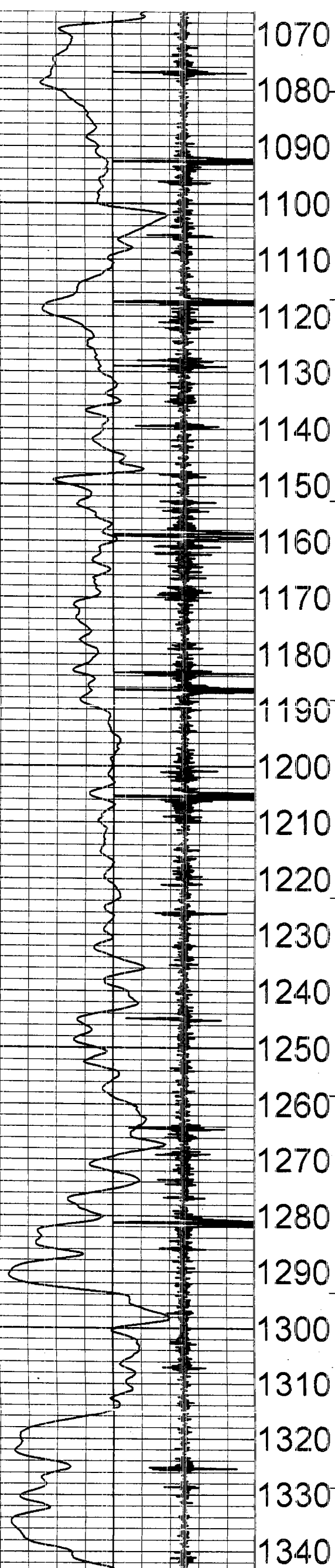


820
830
840
850
860
870
880
890
900
910
920
930
940
950
960
970
980
990
1000
1010
1020
1030
1040
1050
1060
1070
1080
1090

- Cut

- - Cut

- - Cut



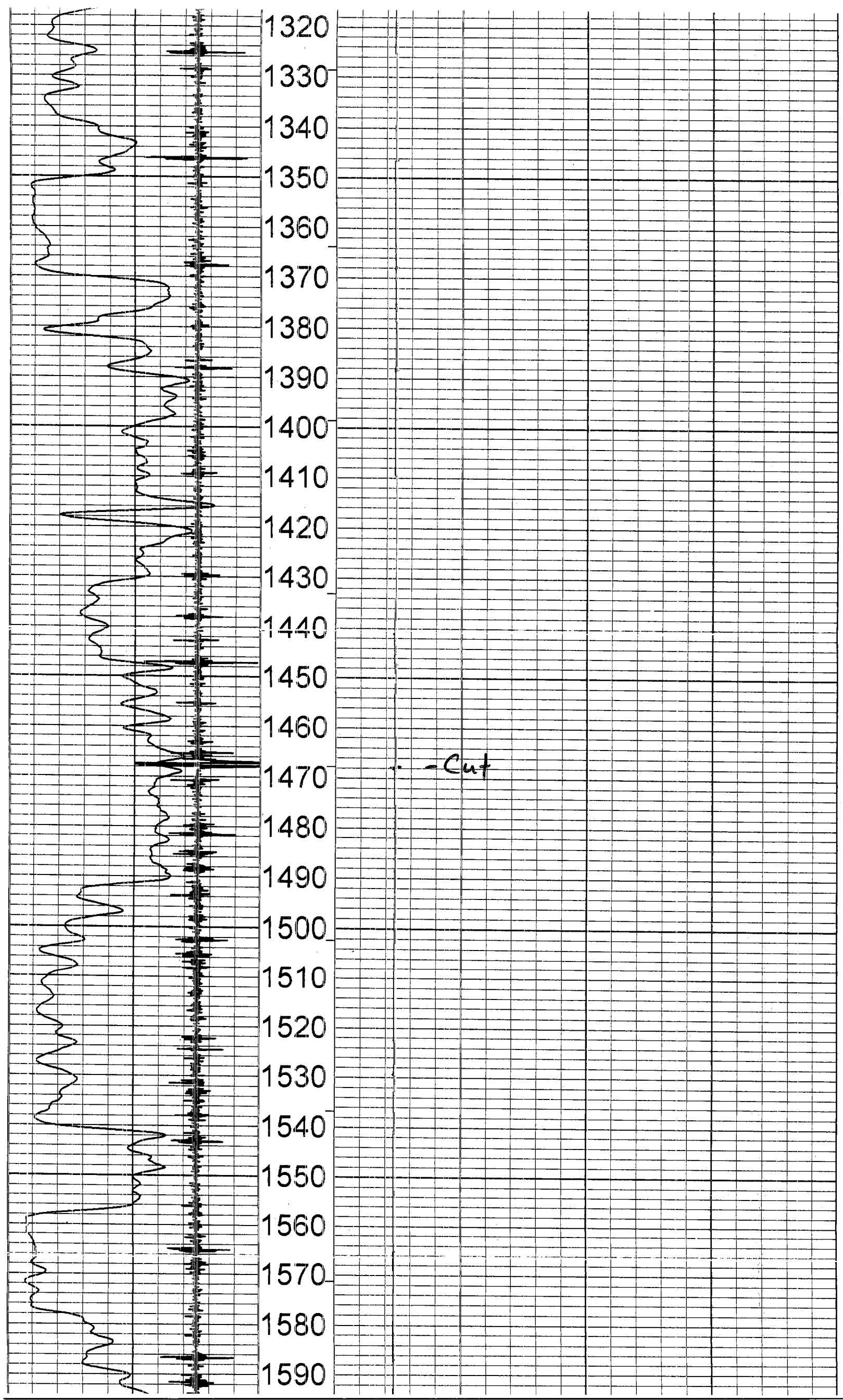
1070
1080
1090
1100
1110
1120
1130
1140
1150
1160
1170
1180
1190
1200
1210
1220
1230
1240
1250
1260
1270
1280
1290
1300
1310
1320
1330
1340

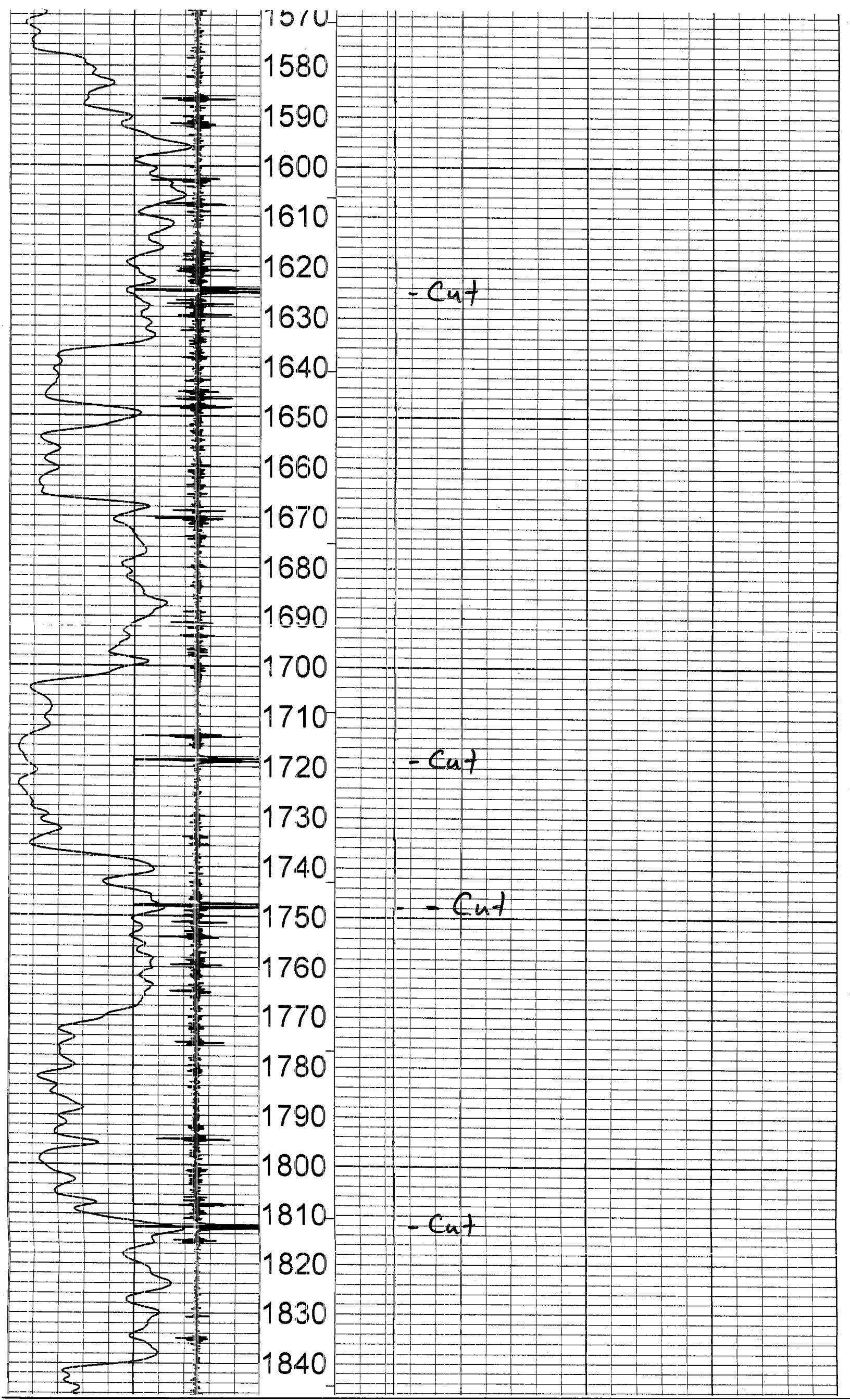
- Cut

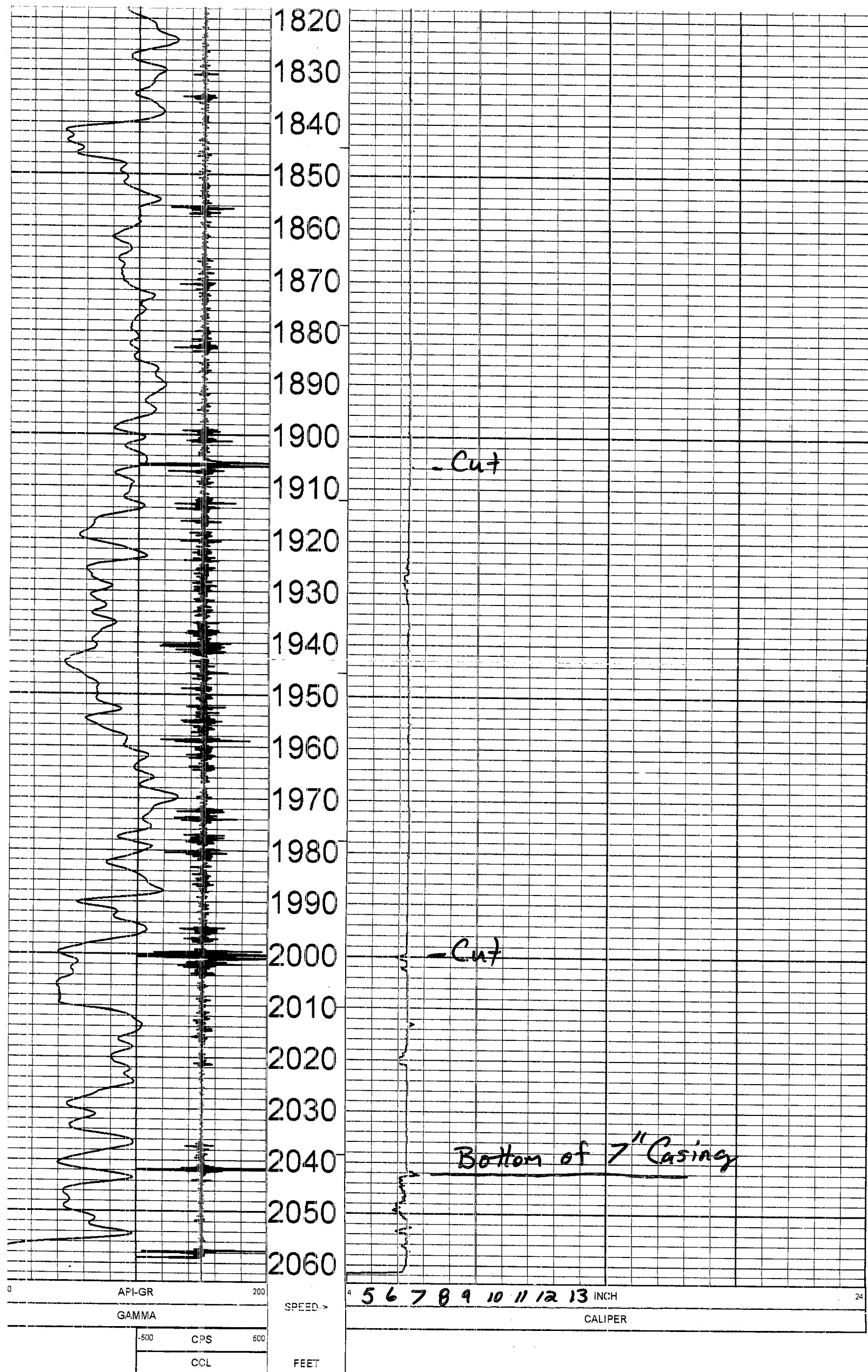
- - Cut

- Cut

- Cut







API-GR 200
 GAMMA
 -500 CPS 500
 CCL

SPEED >
 FEET

4 5 6 7 8 9 10 11 12 13 INCH
 CALIPER

5" Caliper Log 5150 04/30/13

LOG PARAMETERS

-500 CPS 600

CCL

FEET

5" Caliper Log 5150 04/30/13

LOG PARAMETERS

MATRIX DENSITY : 2.65

NEUTRON MATRIX : SANDSTONE

MATRIX DELTA T : 54

MAGNETIC DECL : -8.6

ELECT. CUTOFF : 99999

BIT SIZE : 6.25

PRESENTATION NAME/DATE = 6074A.0 11/01/2012

TOOL CALIBRATION 5150 04/30/13 21:32

TOOL 6074A TM VERSION 2

SERIAL NUMBER 4634

	DATE	TIME	SENSOR	STANDARD	RESPONSE
1	Mar14,13	12:21:29	GAMMA	1.000 [API-GR]	0.000 [CPS]
	Mar14,13	12:21:29	GAMMA	340.000 [API-GR]	331.000 [CPS]
2	Apr30,13	20:44:52	CALIPER	6.000 [INCH]	132700.000 [CPS]
	Apr30,13	20:44:52	CALIPER	16.000 [INCH]	228640.000 [CPS]
3	Mar14,13	09:47:51	CALIPERL	Default [CPS]	Default [CPS]
	Mar14,13	09:47:51	CALIPERL	Default [CPS]	Default [CPS]
4	Mar14,13	09:47:51	CALIPERX	Default [CPS]	Default [CPS]
	Mar14,13	09:47:51	CALIPERX	Default [CPS]	Default [CPS]