

5" = 100'

FEET MD

COMPANY : STONE ENERGY
 WELL : POTOCZNY UNIT A #1H
 FIELD : BUDDY PROSPECT
 COUNTY : MARION
 STATE : WEST VIRGINIA
 COUNTRY : U.S.A.
 API NO. : 47-049-02094-00

COMPANY : STONE ENERGY
 WELL : POTOCZNY UNIT A #1H
 FIELD : BUDDY PROSPECT
 COUNTY : MARION
 STATE : WEST VIRGINIA
 COUNTRY : U.S.A.
 API WELL NO. : 47-049-02094-00

WELL LOCATION
 39° 34' 8.889 N 80° 16' 4.165 W
 390,327' N 1,783,548' E
 SEC:- TWP:- RANGE:-

OTHER SERVICES
 ROP
 TEMPERATURE
 SURVEYS

DEPTH REF. : KELLY BUSHING
 ELEVATION : 1404 Ft (GROUND LEVEL - MEAN SEA LEVEL)
 ALTITUDE : 18 Ft (KELLY BUSHING - GROUND LEVEL)

BOREHOLE RECORD

DEVIATION RECORD

HOLE SIZE in	FROM Ft	TO Ft	INCLINATION deg	FROM Ft	TO Ft
17 1/2	0	966	0 - 93	0	10448
12 1/4	966	2431			
8 3/4	2431	10448			

CASING RECORD

CASING SIZE in	FROM Ft	TO Ft	DRILLING CO. : SAXON	RIG : 141	LMD UNIT NO. : 118-108	DISTRICT : PENNSYLVANIA
20 x 3/8	0	43				
13 3/8	43	966				
9 5/8	966	2431				

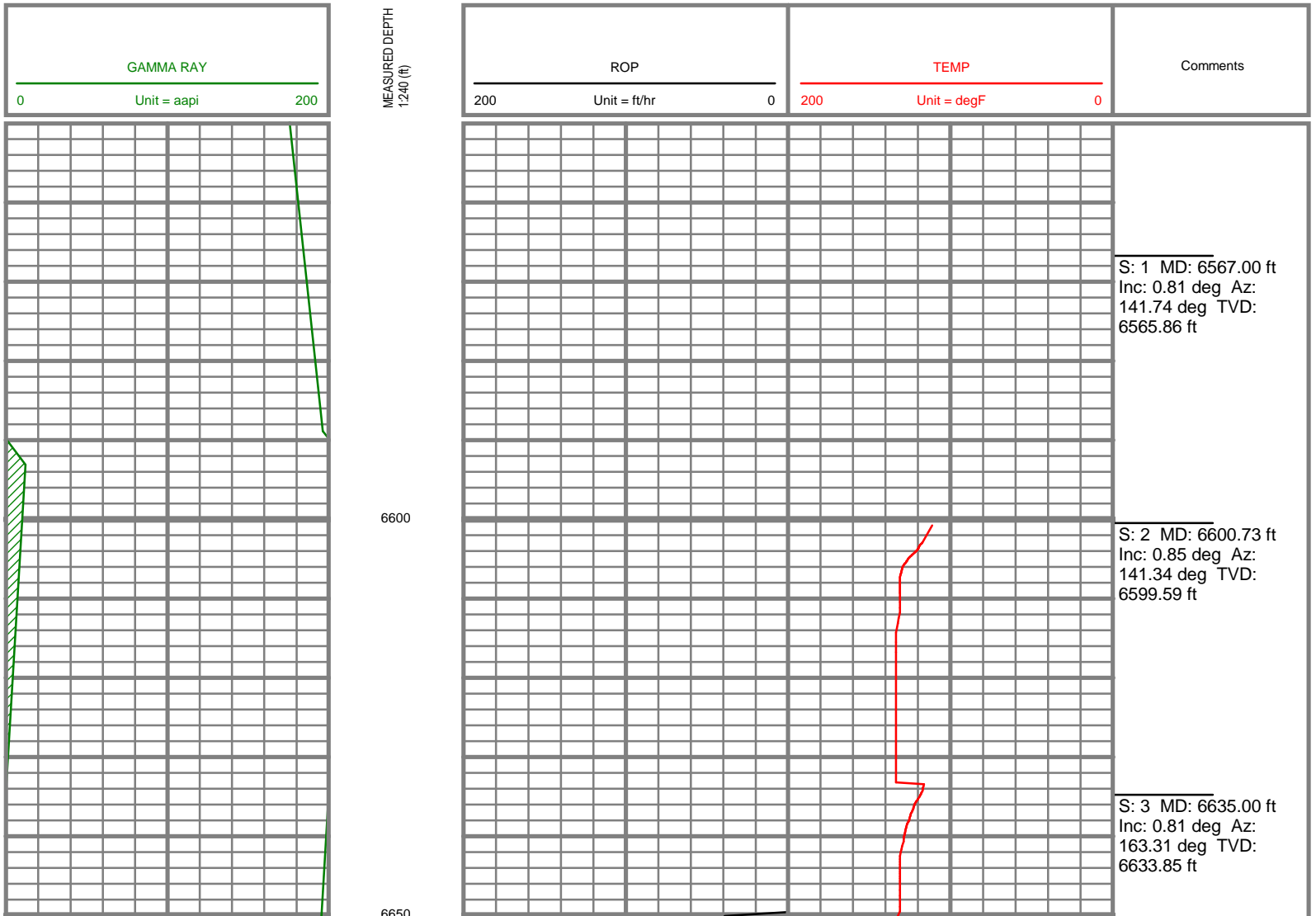
SPUD DATE : 6/24/10
 LMD START DATE : 6/28/10
 LMD END DATE : 7/10/10
 DEPTH : 6650 Ft
 DEPTH : 10406 Ft
 TOTAL DEPTH : 3756 Ft

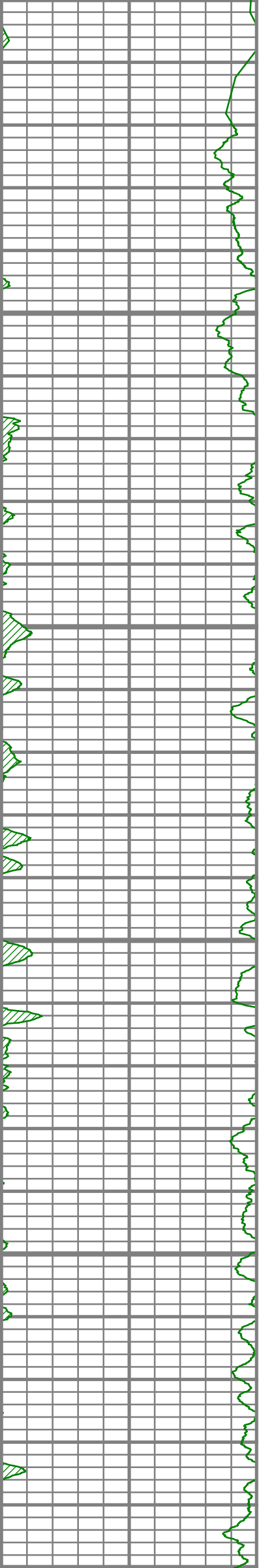
Run Data

RUN NUMBER	1	2	3	4	5
START DATE	6/28/10	6/30/10	7/2/10	7/5/10	7/6/10
START TIME	14:56	06:00	12:45	13:45	09:15
END DATE	6/30/10	7/2/10	7/5/10	7/6/10	7/10/10
END TIME	13:00	01:30	3:30	07:00	14:00
DEPTH IN (ft)	6483	6690	6716	8206	8252
DEPTH OUT (ft)	6690	6716	8206	8252	10448
LOG TOP (ft)	6441	6645	6674	8164	8210
LOG BOTTOM (ft)	6648	6671	8164	8210	10402
HOLE SIZE (in)	8 3/4	8 3/4	8 3/4	8 3/4	8 3/4
MUD DATA @ (ft)	6483	6700	7070	8252	8538
MUD TYPE	WBM	WBM	WBM	WBM	WBM
DENSITY (lb / gal)	14.20	13.2	13.2	14	13.9
VISCOSITY (s / qt)	48	11	49	49	55
pH	8.2	10.5	10	9.5	9.5
FLUID LOSS (cm3 / 30)	5	-	-	-	-
SALINITY (ppm)	-	-	-	-	-
Rm (ohmm @ deg F)	-	-	-	-	-
Rmf (ohmm @ deg F)	-	-	-	-	-
MAX TEMP (deg F)	120	116	146	136	160
Rm @ MAX TEMP (ohmm)	-	-	-	-	-
LWD ENGINEER #1	S.MILLER	S. MILLER	S. MILLER	S. MILLER	M. MILLER
LWD ENGINEER #2	M.MILLER	M. MILLER	M. MILLER	B. ANDERLE	K. WEBB
LWD ENGINEER #3	-	-	-	-	-

Remarks
COMPANY PRODUCTION AFE# 4641-D
SCIENTIFIC DRILLING INTERNATIONAL JOB# 23D0610077
SCIENTIFIC DRILLING INTERNATIONAL WO# 140730
ALL REFERENCES IN THE DEPTH TRACK ARE AT BIT DEPTH.
ALL DATA IS REALTIME DATA UNLESS STATED OTHERWISE.
FLAT AVERAGE OF +/- 1.00 APPLIED TO GAMMA CURVE.
FLAT AVERAGE OF +/- 1.00 APPLIED TO ROP CURVE.
RUN # 1 TOOLS : CONTROLLER 545, MWD EYE 226, GAMMA 46, GAIN 67
RUN # 2 TOOLS : CONTROLLER 545, MWD EYE 226, GAMMA 46, GAIN 67
RUN # 3 TOOLS : CONTROLLER 545, MWD EYE 226, GAMMA 46, GAIN 67
RUN # 4 TOOLS : CONTROLLER 545, MWD EYE 226, GAMMA 46, GAIN 67
RUN # 2 TOOLS : CONTROLLER 119, MWD EYE 54, GAMMA 151, GAIN 36

All interpretations are opinions based on inferences from electrical or other measurements and we cannot, and do not guarantee the accuracy or correctness of any interpretations, and we shall not, except in the case of gross or willful negligence on our part, be liable or responsible for any loss, costs, damages or expenses incurred or sustained by anyone resulting from any interpretation made by any of our officers, agents or employees. These interpretations are also subject to our general terms and conditions as set out in our current price schedule.





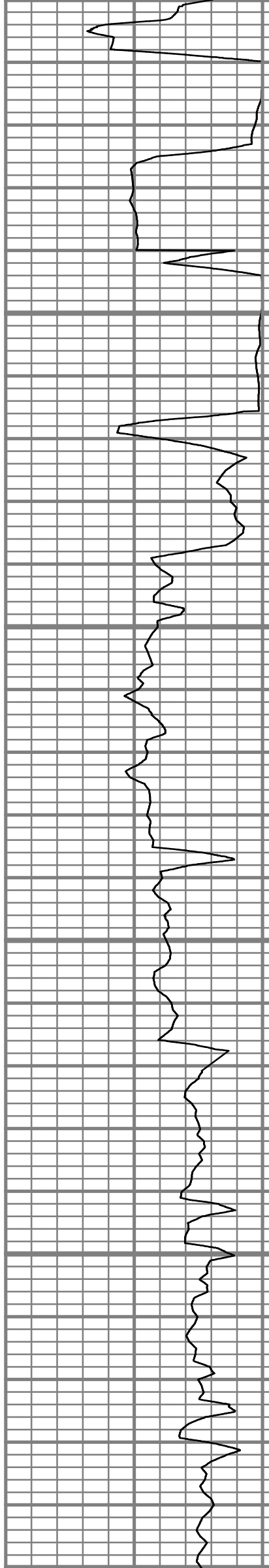
6700

6750

6800

6850

6900



S: 4 MD: 6697.00 ft
Inc: 1.87 deg Az:
216.85 deg TVD:
6695.84 ft

S: 5 MD: 6728.00 ft
Inc: 4.47 deg Az:
228.53 deg TVD:
6726.79 ft

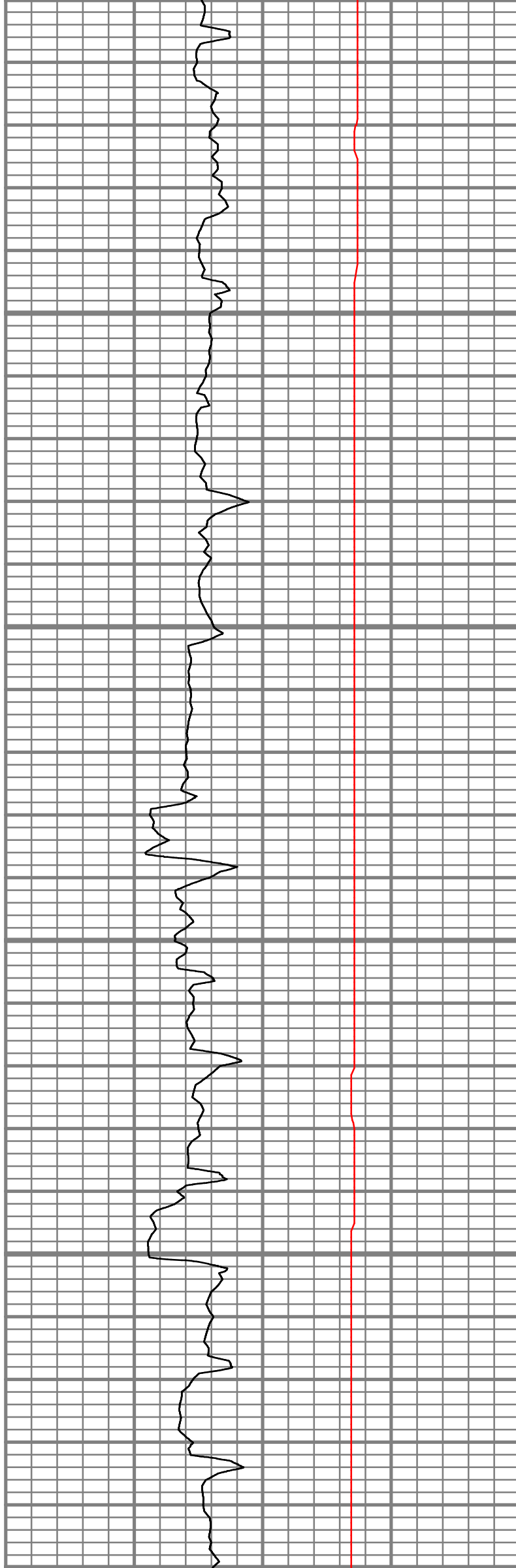
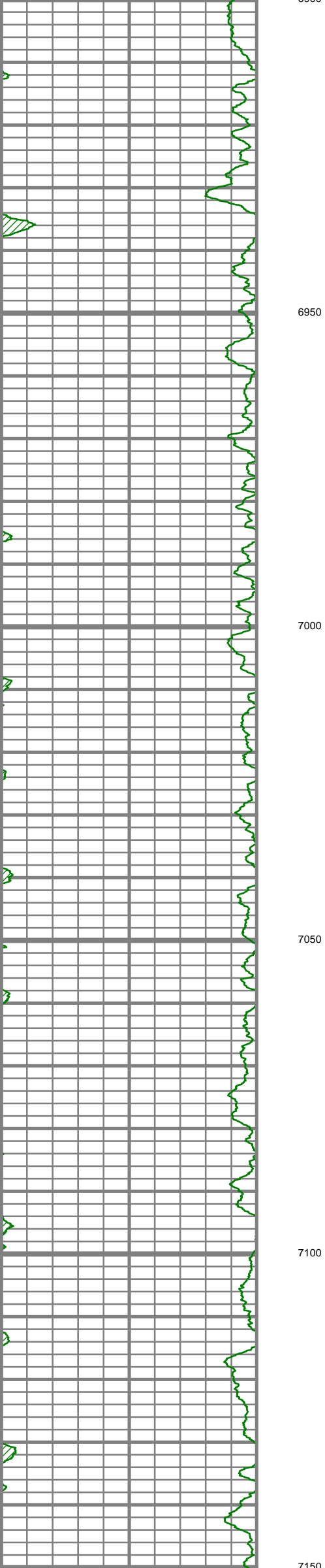
S: 6 MD: 6760.00 ft
Inc: 4.88 deg Az:
225.05 deg TVD:
6758.68 ft

S: 7 MD: 6792.00 ft
Inc: 4.41 deg Az:
224.43 deg TVD:
6790.58 ft

S: 8 MD: 6824.00 ft
Inc: 5.52 deg Az:
224.92 deg TVD:
6822.46 ft

S: 9 MD: 6856.00 ft
Inc: 7.98 deg Az:
229.10 deg TVD:
6854.23 ft

S: 10 MD: 6887.00 ft
Inc: 10.55 deg Az:
229.96 deg TVD:
6884.83 ft



S: 11 MD: 6919.00 ft
Inc: 11.26 deg Az:
230.01 deg TVD:
6916.25 ft

S: 12 MD: 6951.00 ft
Inc: 12.12 deg Az:
228.75 deg TVD:
6947.58 ft

S: 13 MD: 6983.00 ft
Inc: 13.77 deg Az:
227.08 deg TVD:
6978.77 ft

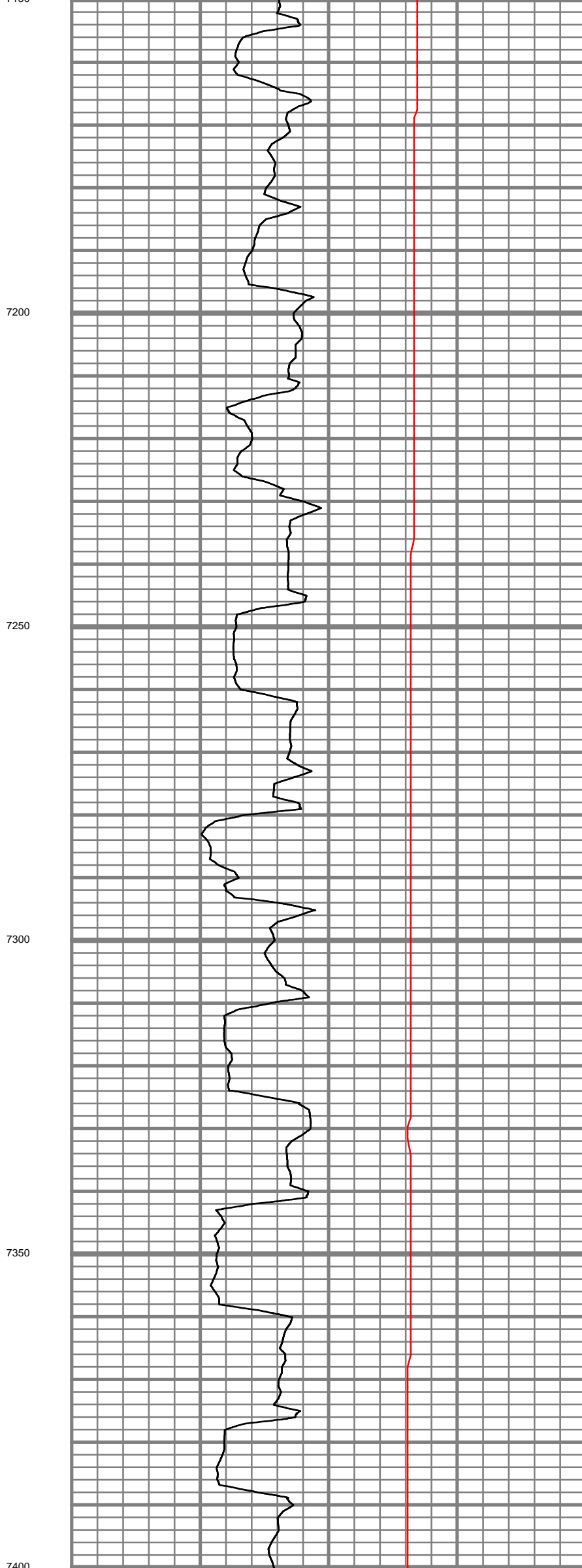
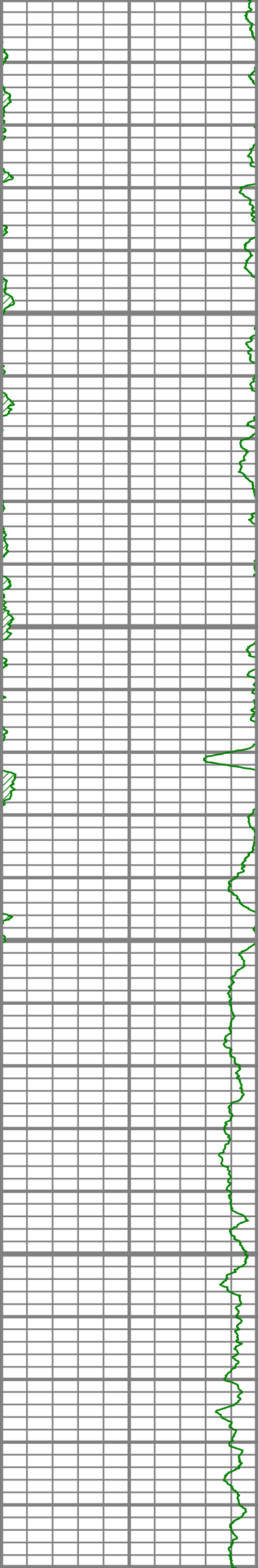
S: 14 MD: 7014.00 ft
Inc: 15.51 deg Az:
225.83 deg TVD:
7008.76 ft

S: 15 MD: 7046.00 ft
Inc: 17.57 deg Az:
227.09 deg TVD:
7039.43 ft

S: 16 MD: 7078.00 ft
Inc: 18.90 deg Az:
228.65 deg TVD:
7069.83 ft

S: 17 MD: 7110.00 ft
Inc: 20.43 deg Az:
230.47 deg TVD:
7099.96 ft

S: 18 MD: 7142.00 ft
Inc: 22.11 deg Az:
231.67 deg TVD:



S: 19 MD: 7173.00 ft
Inc: 23.53 deg Az:
232.22 deg TVD:
7158.35 ft

S: 20 MD: 7205.00 ft
Inc: 24.80 deg Az:
233.11 deg TVD:
7187.55 ft

S: 21 MD: 7237.00 ft
Inc: 26.46 deg Az:
234.18 deg TVD:
7216.40 ft

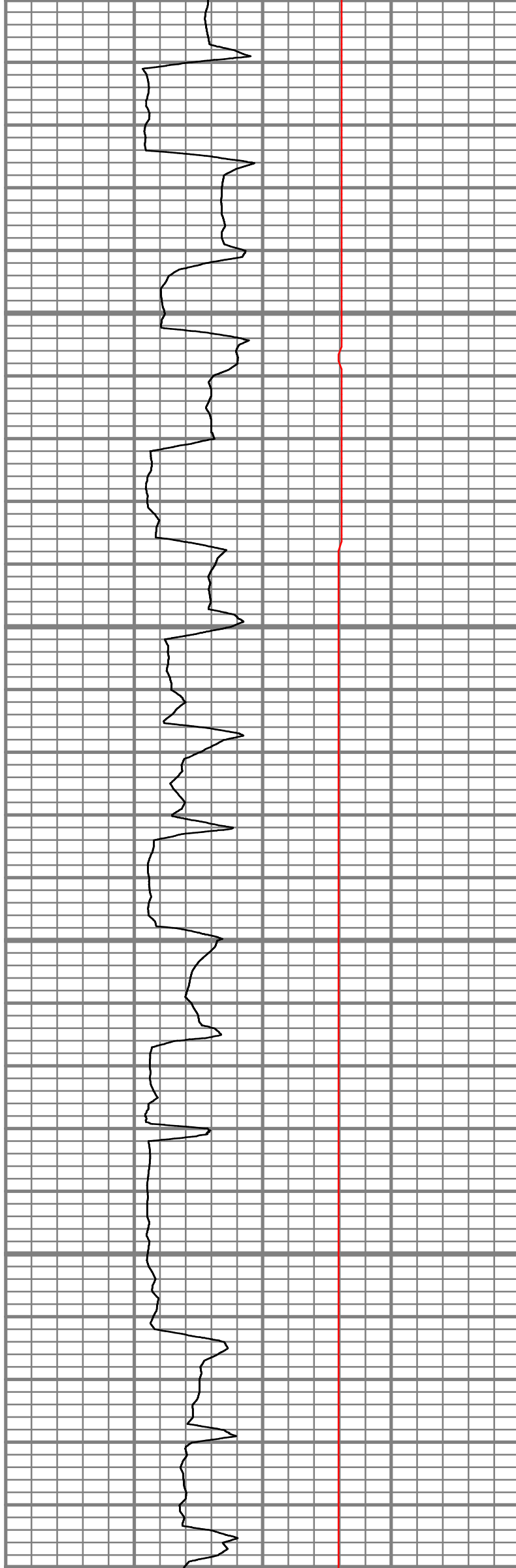
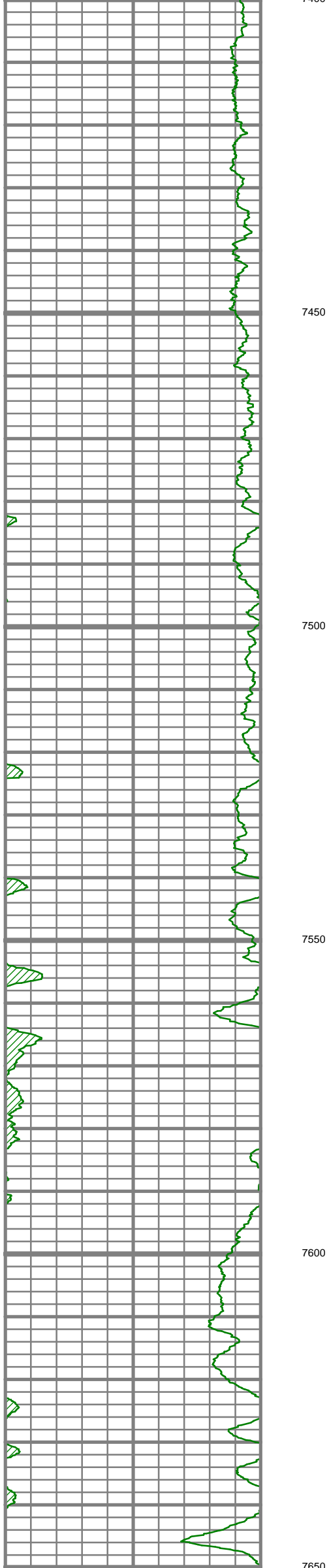
S: 22 MD: 7269.00 ft
Inc: 28.28 deg Az:
232.97 deg TVD:
7244.82 ft

S: 23 MD: 7301.00 ft
Inc: 30.03 deg Az:
232.64 deg TVD:
7272.76 ft

S: 24 MD: 7333.00 ft
Inc: 31.16 deg Az:
231.49 deg TVD:
7300.31 ft

S: 25 MD: 7365.00 ft
Inc: 32.88 deg Az:
231.60 deg TVD:
7327.44 ft

S: 26 MD: 7397.00 ft



Inc: 35.03 deg Az:
231.12 deg TVD:
7353.98 ft

S: 27 MD: 7429.00 ft
Inc: 36.57 deg Az:
230.94 deg TVD:
7379.93 ft

S: 28 MD: 7461.00 ft
Inc: 38.64 deg Az:
230.95 deg TVD:
7405.28 ft

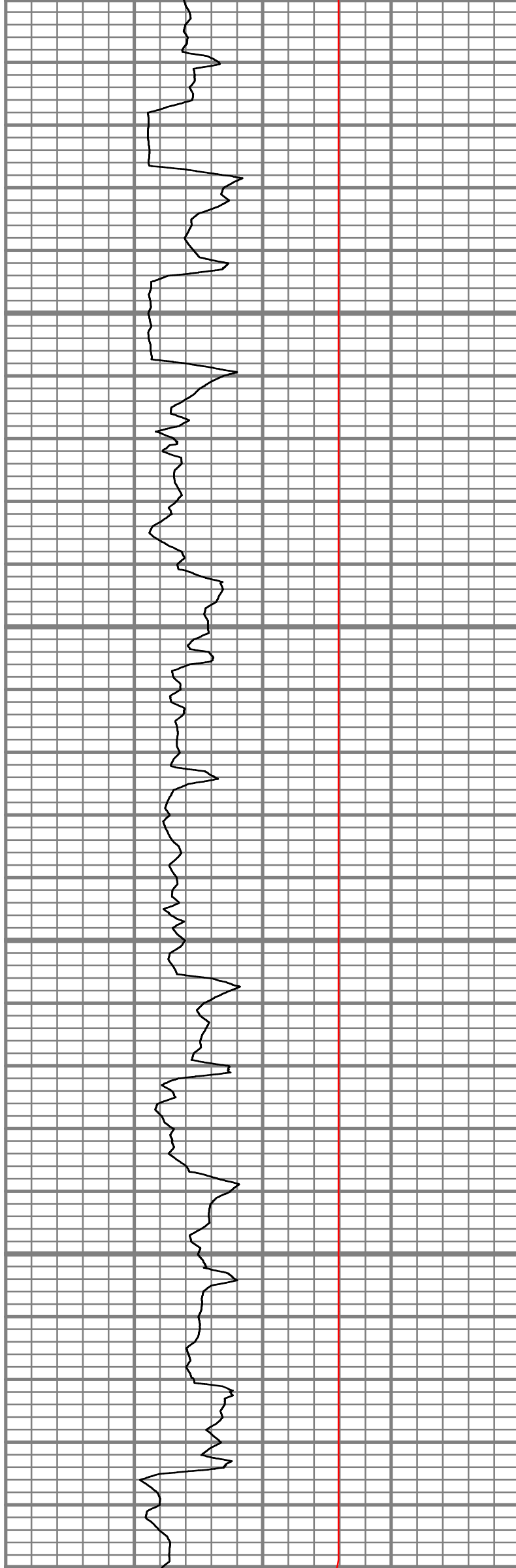
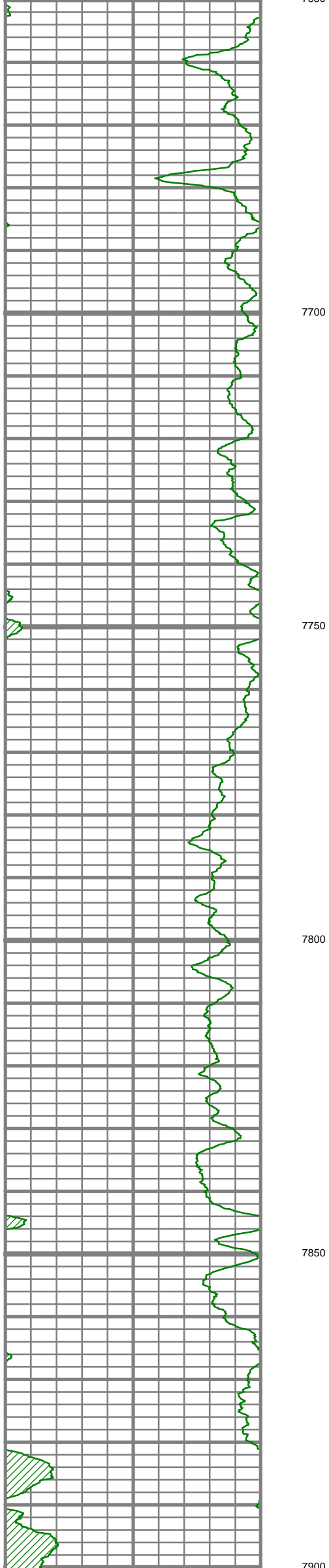
S: 29 MD: 7493.00 ft
Inc: 40.15 deg Az:
230.88 deg TVD:
7430.01 ft

S: 30 MD: 7525.00 ft
Inc: 42.15 deg Az:
229.77 deg TVD:
7454.10 ft

S: 31 MD: 7557.00 ft
Inc: 44.06 deg Az:
229.46 deg TVD:
7477.46 ft

S: 32 MD: 7588.00 ft
Inc: 44.23 deg Az:
229.25 deg TVD:
7499.71 ft

S: 33 MD: 7620.00 ft
Inc: 45.73 deg Az:
229.76 deg TVD:
7522.34 ft



S: 34 MD: 7652.00 ft
Inc: 47.91 deg Az:
229.64 deg TVD:
7544.24 ft

S: 35 MD: 7684.00 ft
Inc: 49.80 deg Az:
229.47 deg TVD:
7565.29 ft

S: 36 MD: 7716.00 ft
Inc: 51.54 deg Az:
228.91 deg TVD:
7585.57 ft

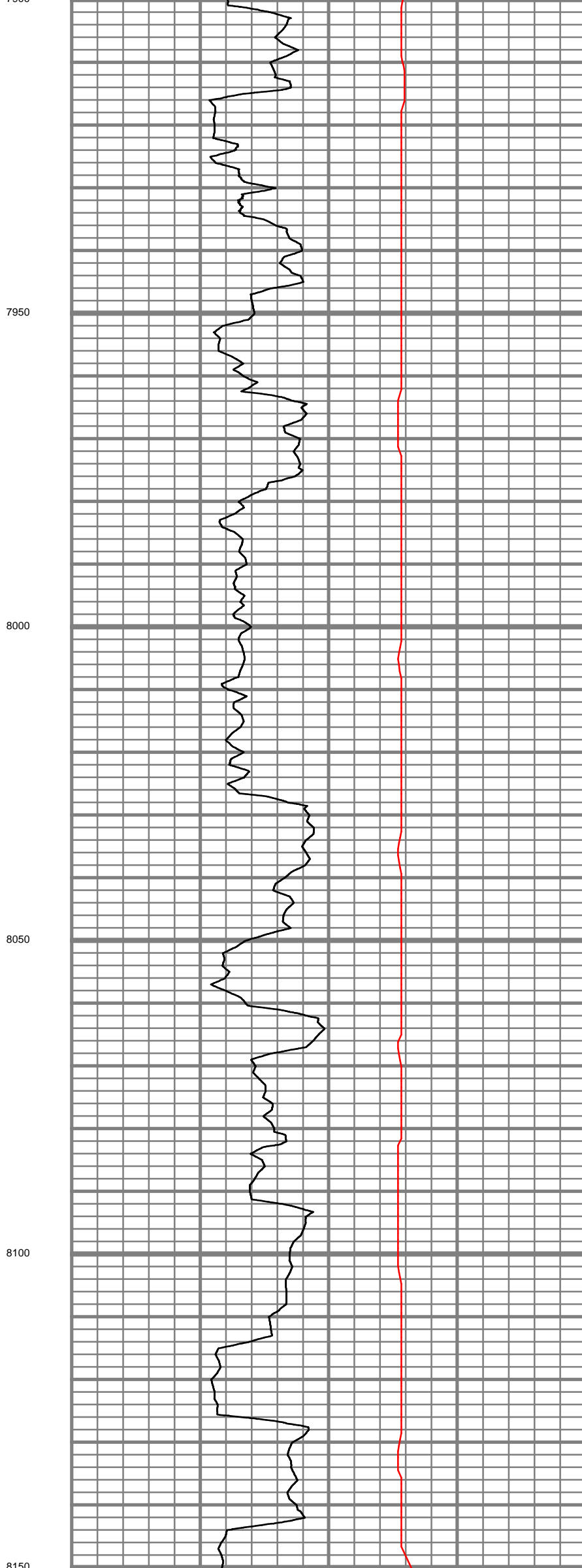
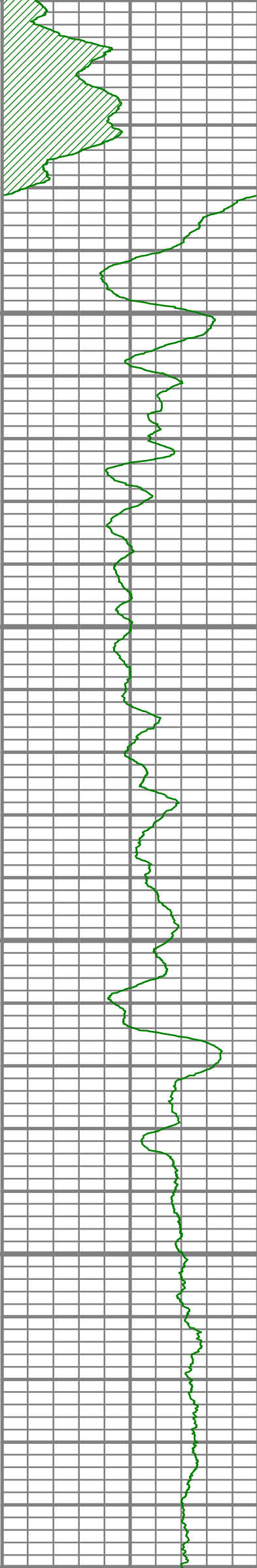
S: 37 MD: 7748.00 ft
Inc: 53.05 deg Az:
228.87 deg TVD:
7605.14 ft

S: 38 MD: 7780.00 ft
Inc: 53.56 deg Az:
228.85 deg TVD:
7624.27 ft

S: 39 MD: 7812.00 ft
Inc: 54.74 deg Az:
229.10 deg TVD:
7643.01 ft

S: 40 MD: 7844.00 ft
Inc: 56.63 deg Az:
229.23 deg TVD:
7661.05 ft

S: 41 MD: 7876.00 ft
Inc: 58.30 deg Az:
229.72 deg TVD:
7678.26 ft



S: 42 MD: 7908.00 ft
Inc: 59.90 deg Az:
229.40 deg TVD:
7694.69 ft

S: 43 MD: 7940.00 ft
Inc: 61.59 deg Az:
229.07 deg TVD:
7710.32 ft

S: 44 MD: 7972.00 ft
Inc: 63.09 deg Az:
228.87 deg TVD:
7725.18 ft

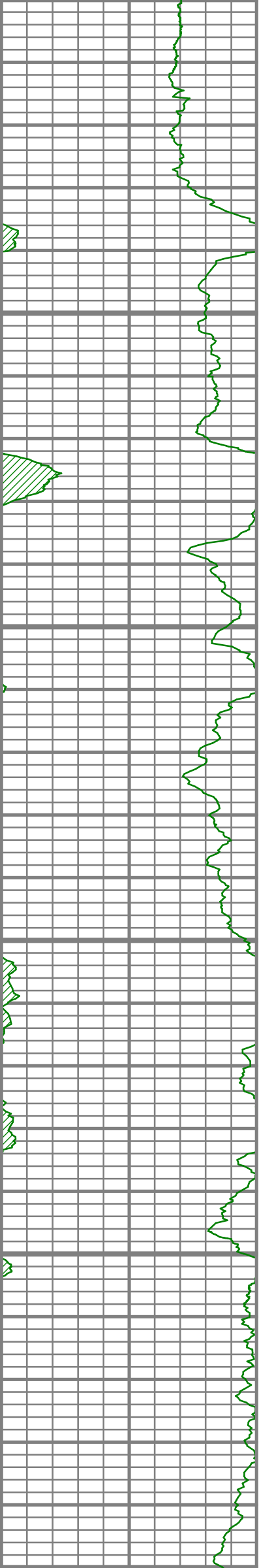
S: 45 MD: 8004.00 ft
Inc: 63.21 deg Az:
229.27 deg TVD:
7739.63 ft

S: 46 MD: 8036.00 ft
Inc: 65.19 deg Az:
229.20 deg TVD:
7753.56 ft

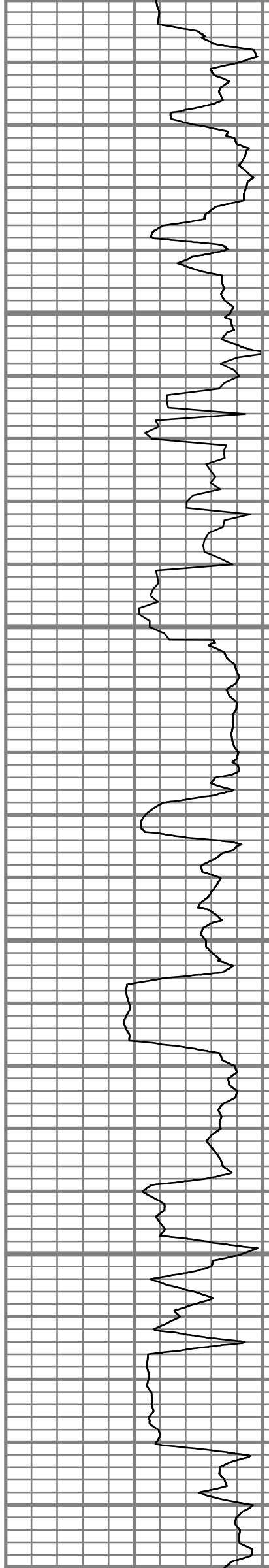
S: 47 MD: 8068.00 ft
Inc: 67.57 deg Az:
228.75 deg TVD:
7766.38 ft

S: 48 MD: 8100.00 ft
Inc: 70.36 deg Az:
228.67 deg TVD:
7777.86 ft

S: 49 MD: 8132.00 ft
Inc: 72.02 deg Az:
227.39 deg TVD:
7788.18 ft



8150
8200
8250
8300
8350
8400



S: 50 MD: 8164.00 ft
Inc: 73.43 deg Az:
226.54 deg TVD:
7797.68 ft

S: 51 MD: 8196.00 ft
Inc: 74.82 deg Az:
224.00 deg TVD:
7806.44 ft

S: 52 MD: 8227.00 ft
Inc: 75.27 deg Az:
220.60 deg TVD:
7814.44 ft

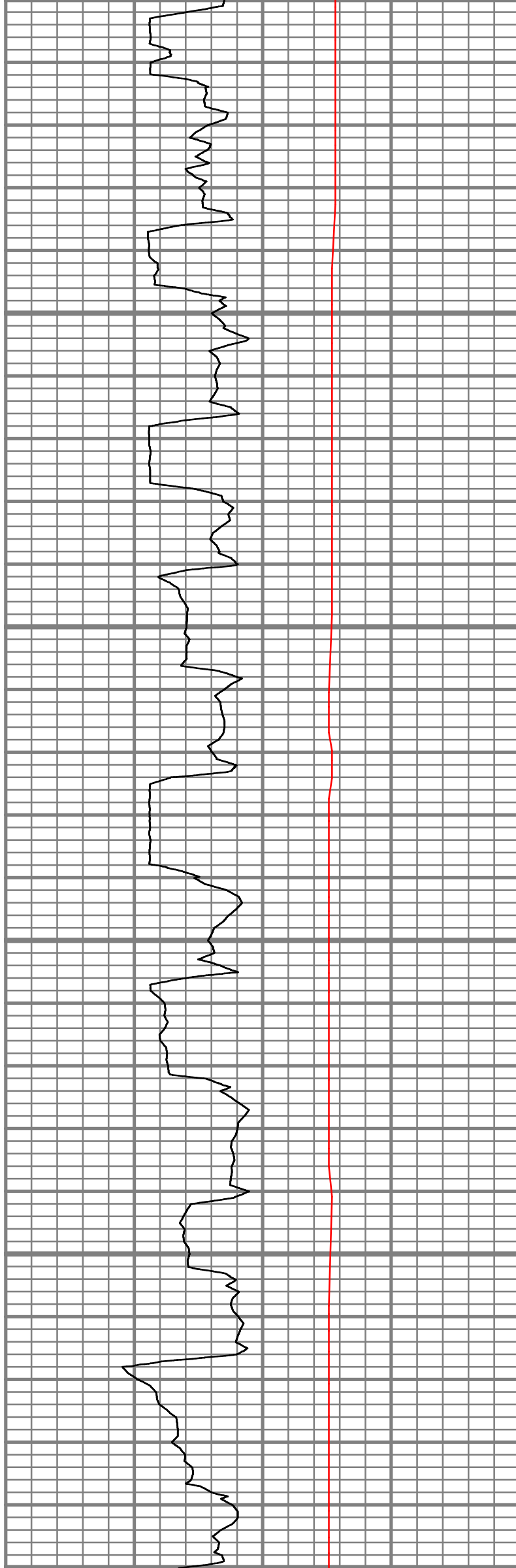
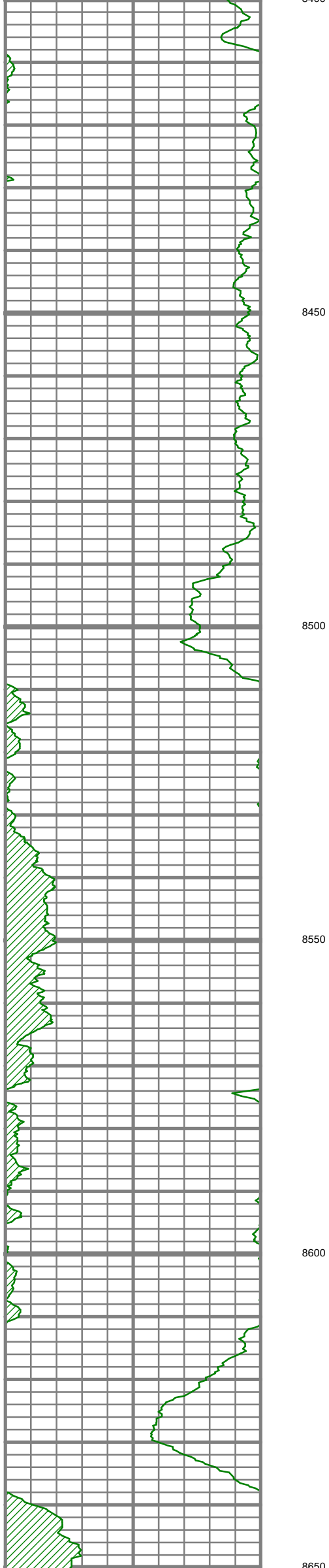
S: 53 MD: 8259.00 ft
Inc: 75.79 deg Az:
217.17 deg TVD:
7822.44 ft

S: 54 MD: 8291.00 ft
Inc: 77.78 deg Az:
213.95 deg TVD:
7829.75 ft

S: 55 MD: 8323.00 ft
Inc: 78.45 deg Az:
210.69 deg TVD:
7836.35 ft

S: 56 MD: 8355.00 ft
Inc: 78.13 deg Az:
207.97 deg TVD:
7842.84 ft

S: 57 MD: 8387.00 ft
Inc: 78.12 deg Az:
205.16 deg TVD:
7849.43 ft



S: 58 MD: 8419.00 ft
Inc: 78.65 deg Az:
202.54 deg TVD:
7855.88 ft

S: 59 MD: 8451.00 ft
Inc: 79.50 deg Az:
199.36 deg TVD:
7861.94 ft

S: 60 MD: 8483.00 ft
Inc: 80.47 deg Az:
196.96 deg TVD:
7867.51 ft

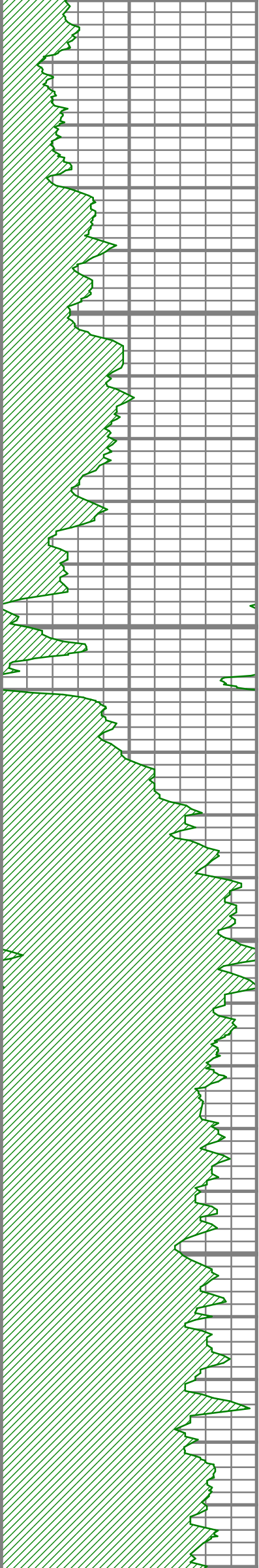
S: 61 MD: 8515.00 ft
Inc: 81.55 deg Az:
194.23 deg TVD:
7872.51 ft

S: 62 MD: 8546.00 ft
Inc: 82.01 deg Az:
191.19 deg TVD:
7876.94 ft

S: 63 MD: 8578.00 ft
Inc: 83.34 deg Az:
188.78 deg TVD:
7881.02 ft

S: 64 MD: 8610.00 ft
Inc: 84.99 deg Az:
187.25 deg TVD:
7884.28 ft

S: 65 MD: 8641.00 ft
Inc: 85.35 deg Az:
184.55 deg TVD:
7886.89 ft



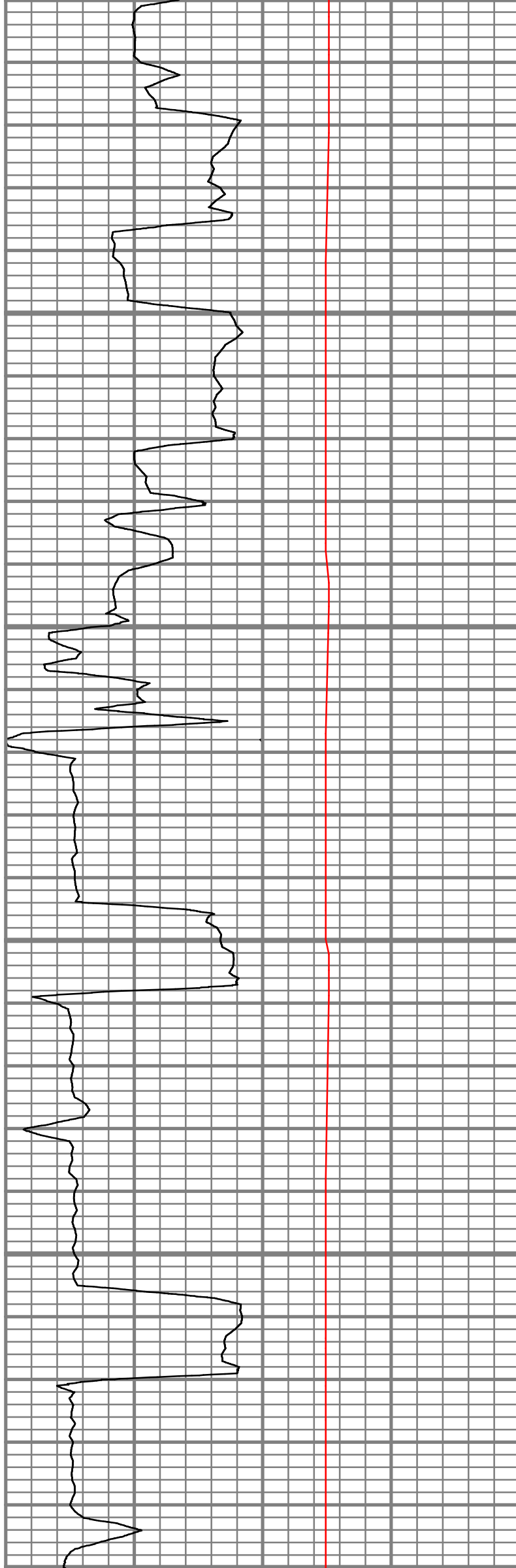
8700

8750

8800

8850

8900



S: 66 MD: 8673.00 ft
Inc: 86.77 deg Az:
182.59 deg TVD:
7889.09 ft

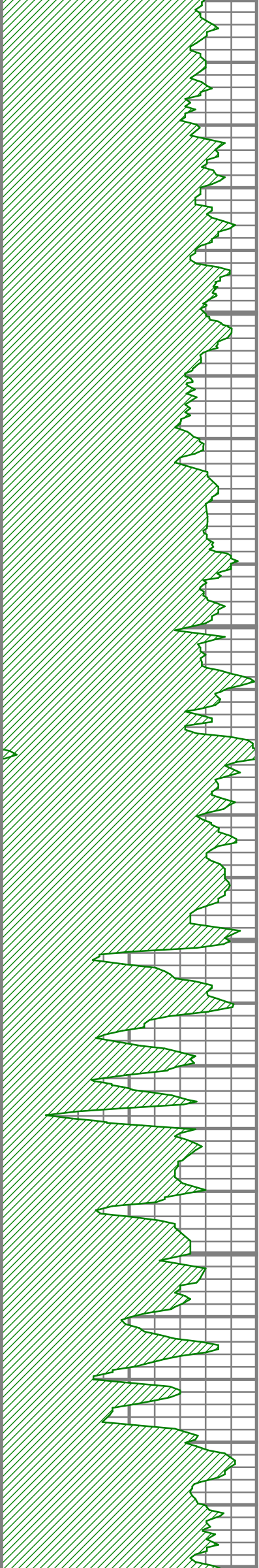
S: 67 MD: 8705.00 ft
Inc: 87.34 deg Az:
178.99 deg TVD:
7890.73 ft

S: 68 MD: 8737.00 ft
Inc: 88.12 deg Az:
177.71 deg TVD:
7892.00 ft

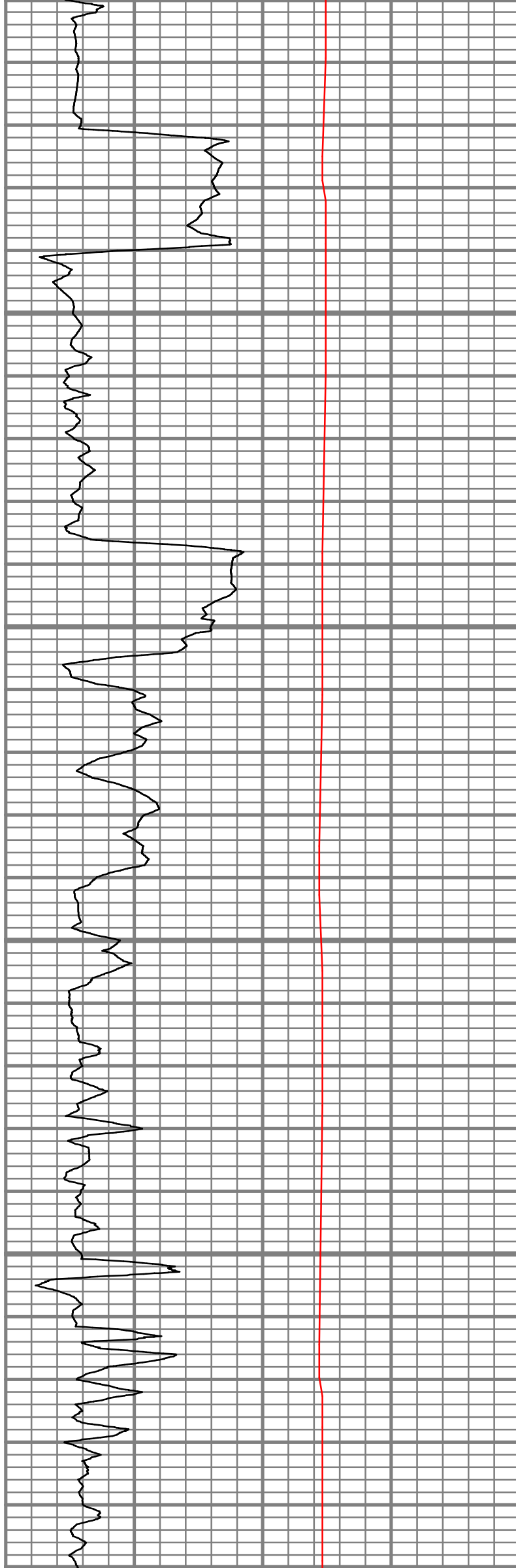
S: 69 MD: 8769.00 ft
Inc: 88.69 deg Az:
177.62 deg TVD:
7892.89 ft

S: 70 MD: 8801.00 ft
Inc: 89.83 deg Az:
176.92 deg TVD:
7893.30 ft

S: 71 MD: 8865.00 ft
Inc: 91.75 deg Az:
175.68 deg TVD:
7892.42 ft



8900
8950
9000
9050
9100
9150

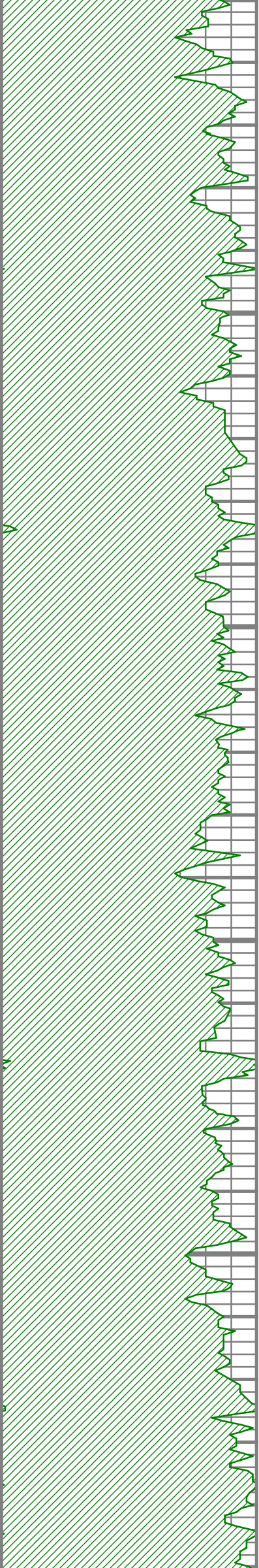


S: 72 MD: 8928.00 ft
Inc: 92.42 deg Az:
173.09 deg TVD:
7890.13 ft

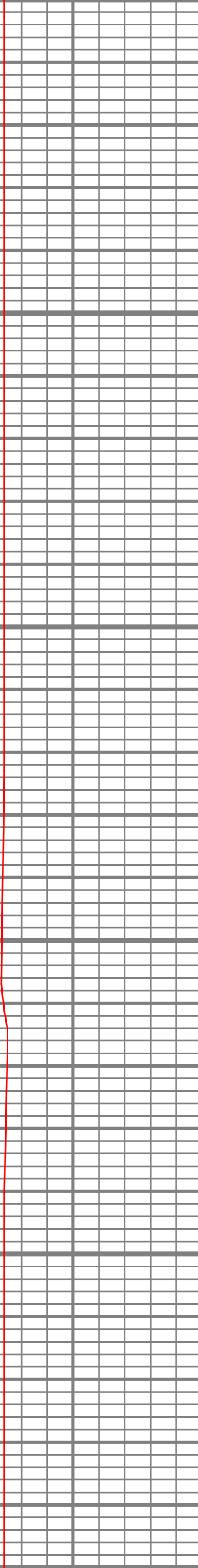
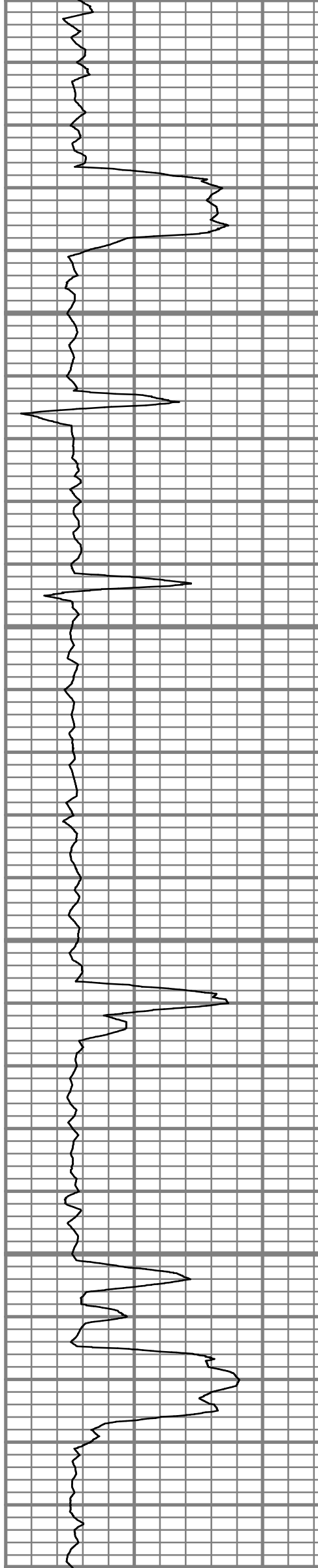
S: 73 MD: 8992.00 ft
Inc: 91.34 deg Az:
170.89 deg TVD:
7888.02 ft

S: 74 MD: 9056.00 ft
Inc: 91.38 deg Az:
170.76 deg TVD:
7886.50 ft

S: 75 MD: 9119.00 ft
Inc: 92.02 deg Az:
172.15 deg TVD:
7884.63 ft



9100
9200
9250
9300
9350
9400

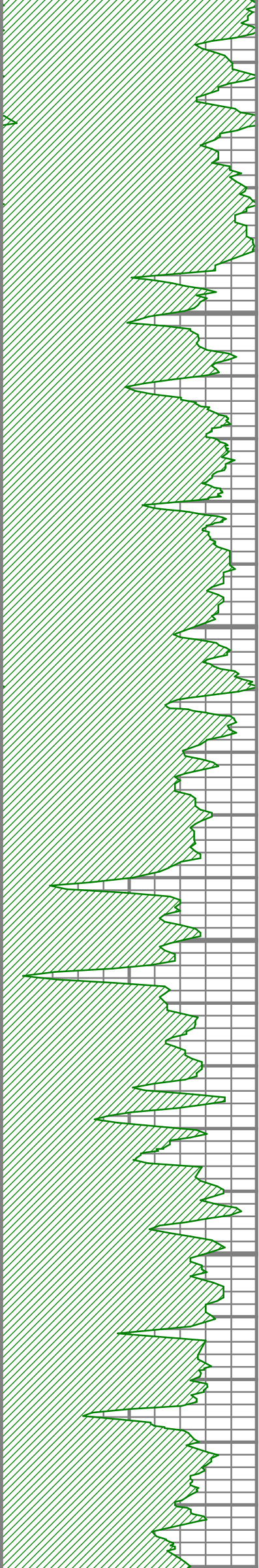


S: 76 MD: 9183.00 ft
Inc: 91.89 deg Az:
172.03 deg TVD:
7882.45 ft

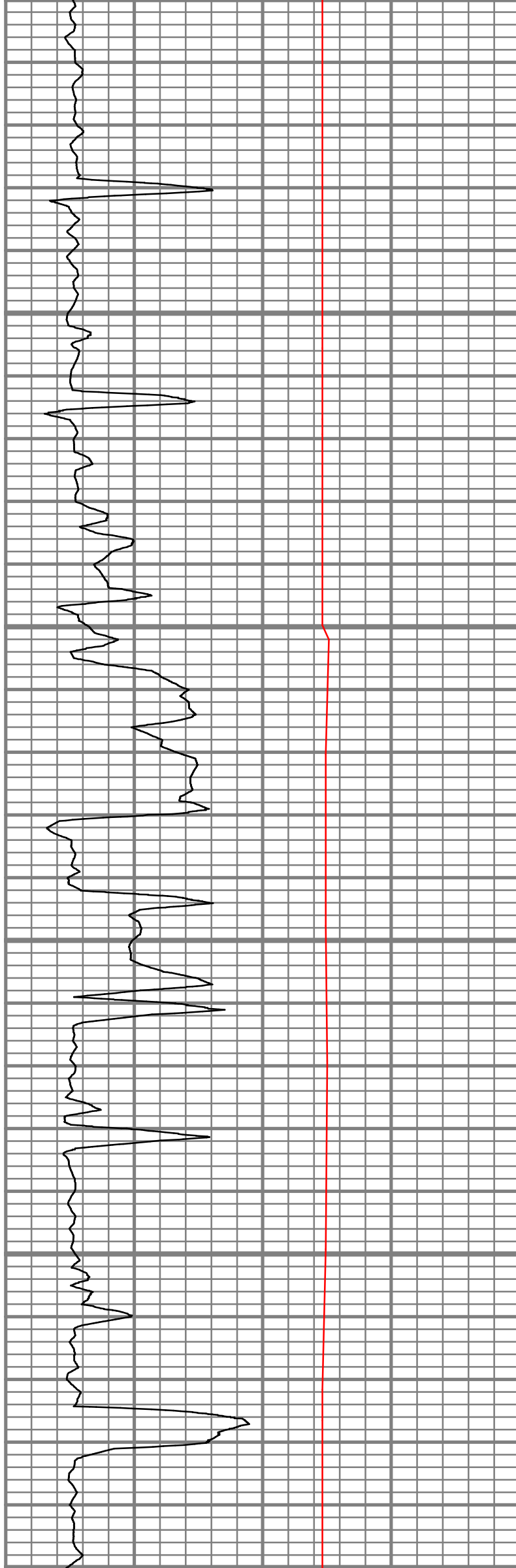
S: 77 MD: 9246.00 ft
Inc: 92.42 deg Az:
170.88 deg TVD:
7880.08 ft

S: 78 MD: 9309.00 ft
Inc: 92.43 deg Az:
171.34 deg TVD:
7877.42 ft

S: 79 MD: 9373.00 ft
Inc: 91.18 deg Az:
169.09 deg TVD:
7875.41 ft



9400
9450
9500
9550
9600
9650



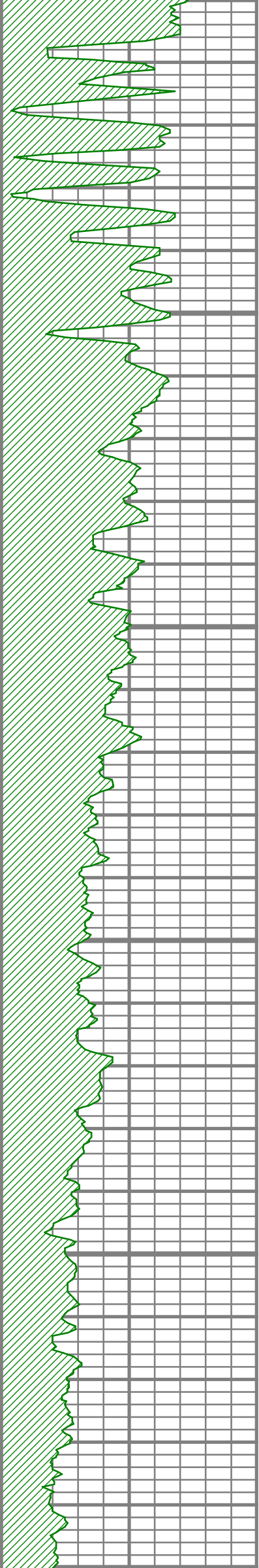
S: 80 MD: 9437.00 ft
Inc: 91.14 deg Az:
168.91 deg TVD:
7874.11 ft

S: 81 MD: 9501.00 ft
Inc: 91.65 deg Az:
169.00 deg TVD:
7872.55 ft

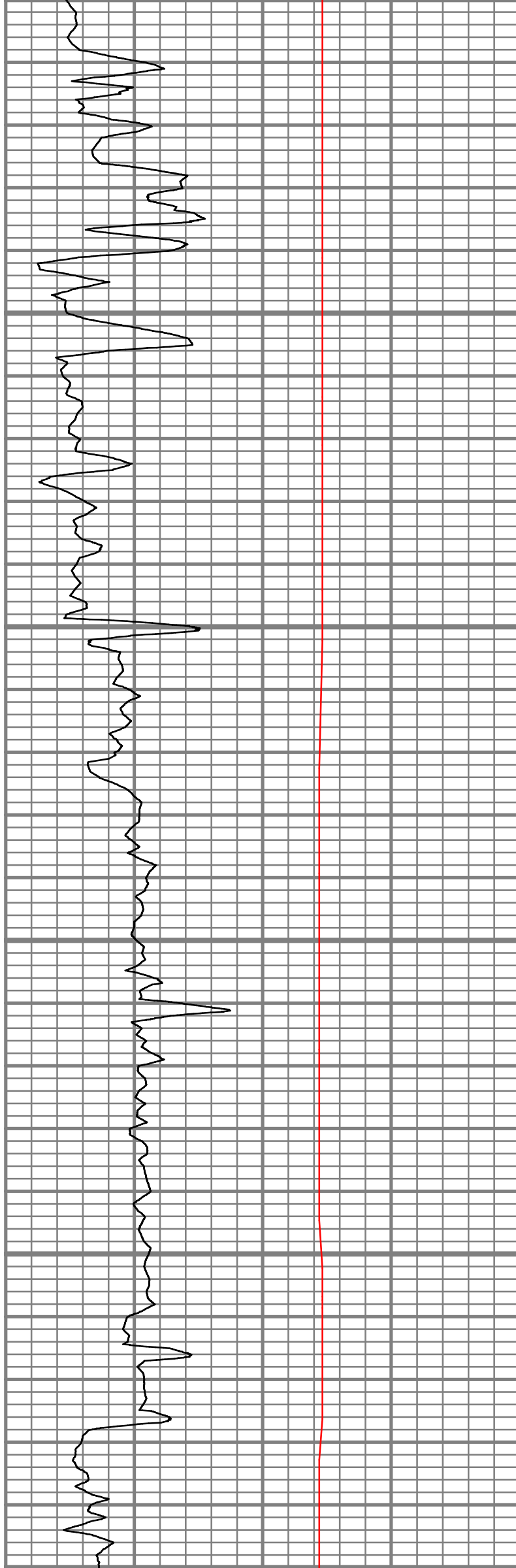
S: 82 MD: 9565.00 ft
Inc: 92.22 deg Az:
169.68 deg TVD:
7870.39 ft

S: 83 MD: 9629.00 ft
Inc: 91.31 deg Az:
170.70 deg TVD:
7868.43 ft





9700
9750
9800
9850
9900

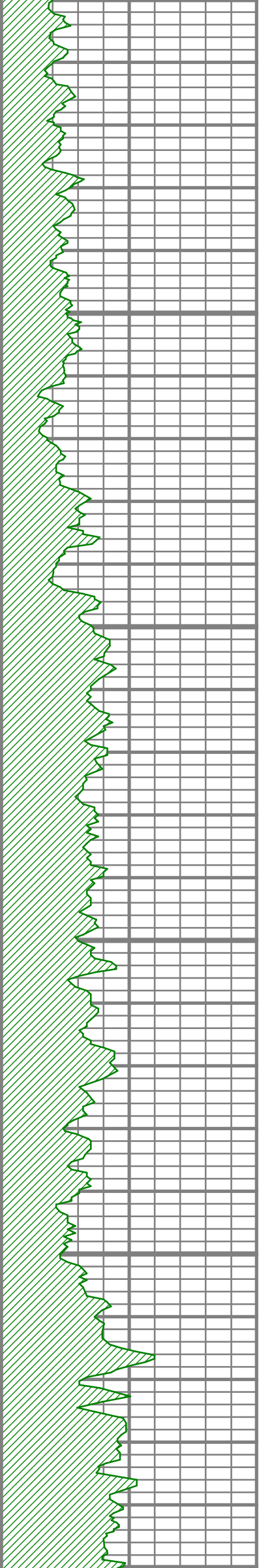


S: 84 MD: 9692.00 ft
Inc: 91.21 deg Az:
170.79 deg TVD:
7867.04 ft

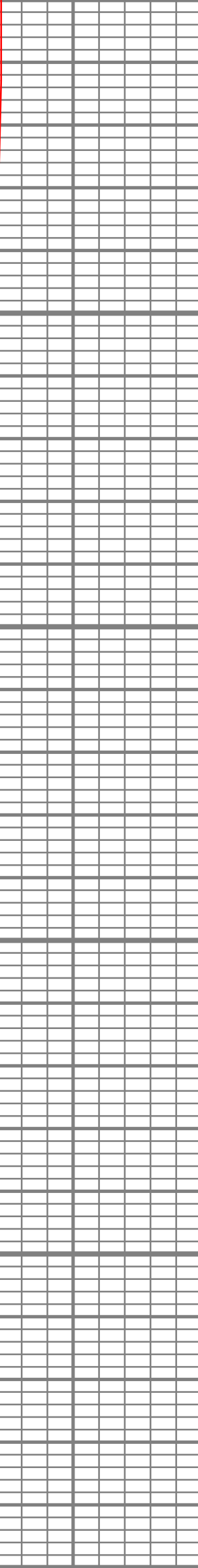
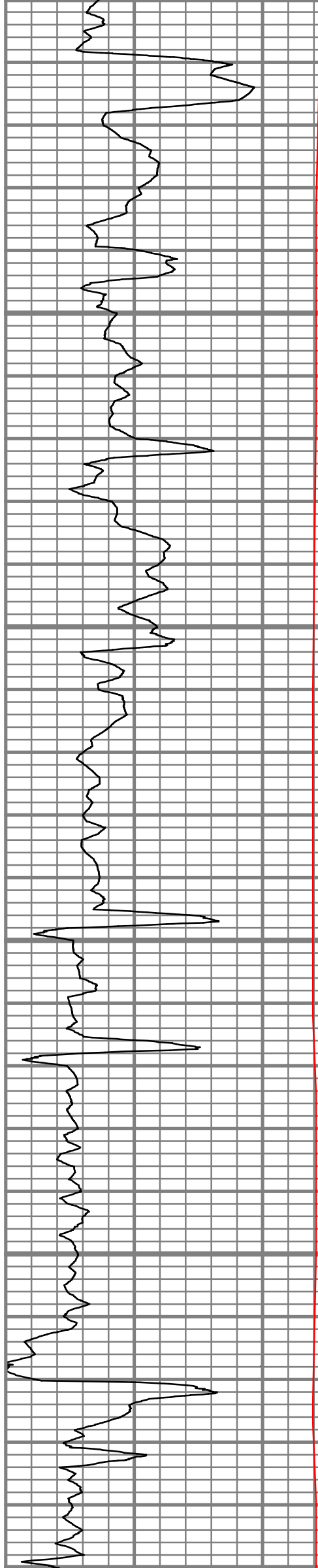
S: 85 MD: 9756.00 ft
Inc: 90.60 deg Az:
169.97 deg TVD:
7866.02 ft

S: 86 MD: 9820.00 ft
Inc: 90.67 deg Az:
170.21 deg TVD:
7865.31 ft

S: 87 MD: 9883.00 ft
Inc: 90.67 deg Az:
170.66 deg TVD:
7864.57 ft



9950
10000
10050
10100
10150

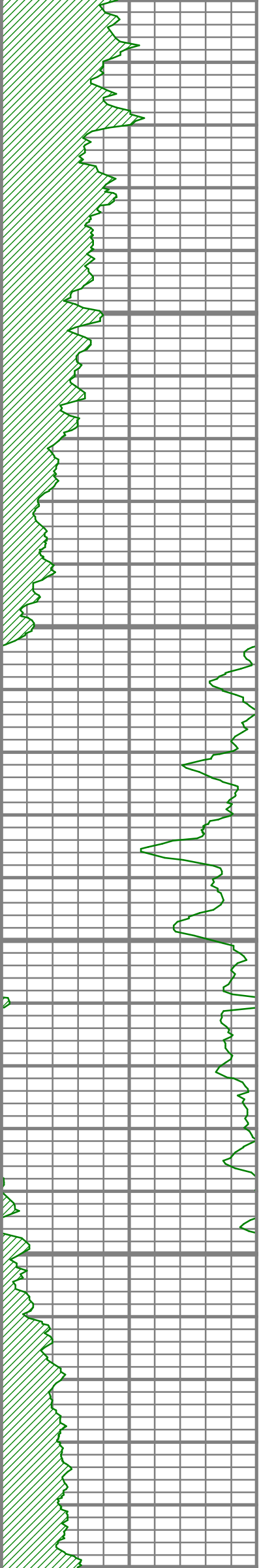


S: 88 MD: 9947.00 ft
Inc: 91.61 deg Az:
171.70 deg TVD:
7863.29 ft

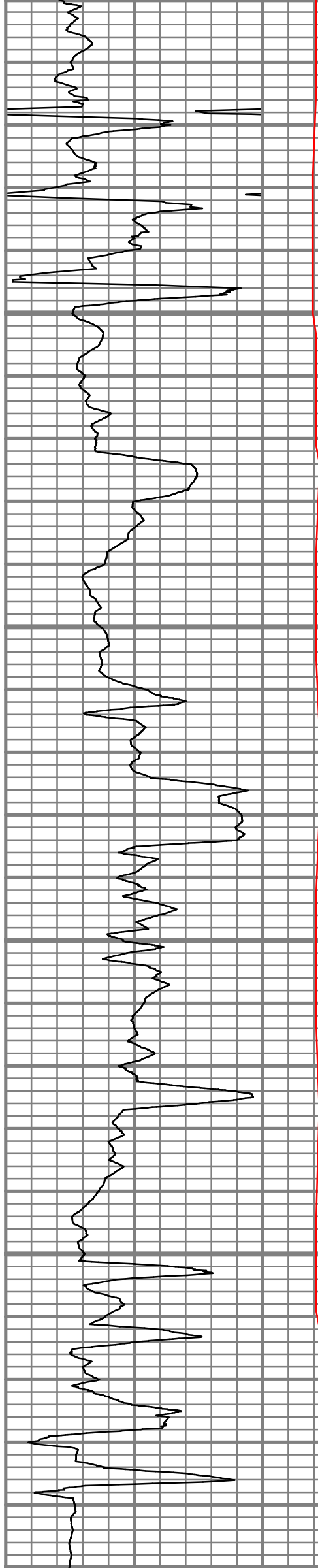
S: 89 MD: 10010.00 ft
Inc: 91.78 deg Az:
171.69 deg TVD:
7861.43 ft

S: 90 MD: 10074.00 ft
Inc: 91.68 deg Az:
172.12 deg TVD:
7859.50 ft

S: 91 MD: 10138.00 ft
Inc: 91.48 deg Az:
171.85 deg TVD:
7857.73 ft



10150
10200
10250
10300
10350
10400

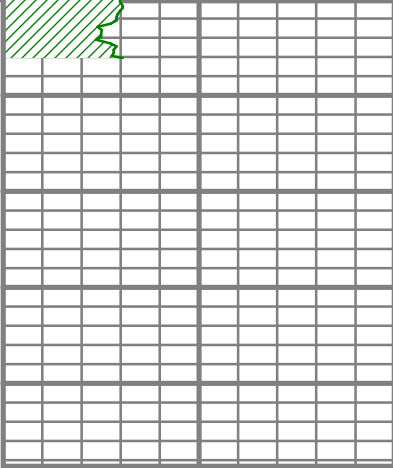


S: 92 MD: 10201.00 ft
Inc: 91.24 deg Az:
171.86 deg TVD:
7856.24 ft

S: 93 MD: 10265.00 ft
Inc: 91.51 deg Az:
172.78 deg TVD:
7854.70 ft

S: 94 MD: 10329.00 ft
Inc: 93.33 deg Az:
175.23 deg TVD:
7851.99 ft

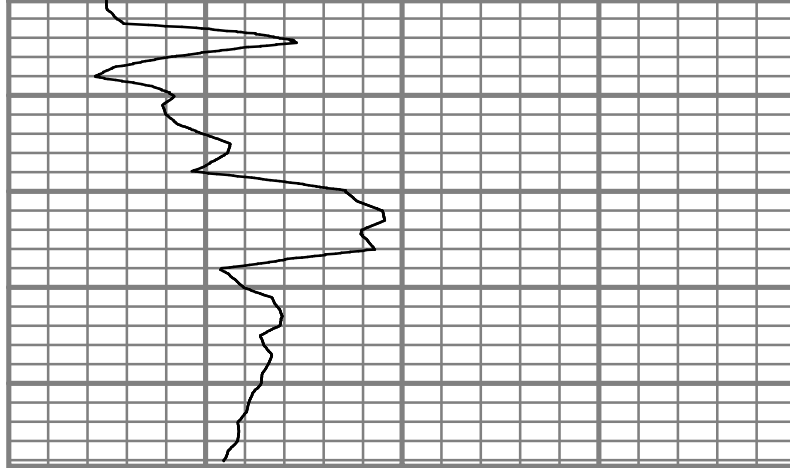
S: 95 MD: 10361.00 ft
Inc: 93.60 deg Az:
175.94 deg TVD:
7850.06 ft



GAMMA RAY

200 Unit = aapi 400

MEASURED DEPTH
1240 (ft)



ROP

200 Unit = ft/hr 0

TEMP

200 Unit = degF 0

Comments



GAMMA RAY

5" = 100'

FEET MD