



# Crim 2248 3H MD

(Scale: 2"=100')

Company: XTO Energy Inc.

Well: Crim 2248 3H

Field: Marcellus

Well ID: 47-049-02115

Job Number: DDPA-100120

Location: Four States

Operator 1: B. Holdridge

Operator 2: J. Blakeny

State: WV

County: Marion

Country: USA

Elev KB: 985'

Elev DF: 985'

Elev GL: 965'

Comment 1: X: 354873.09

Comment 2: Y: 1773551.42

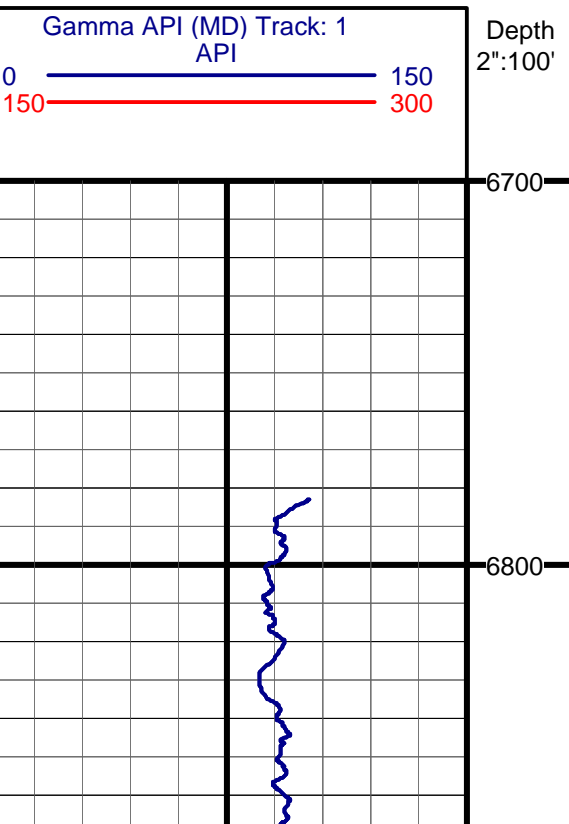
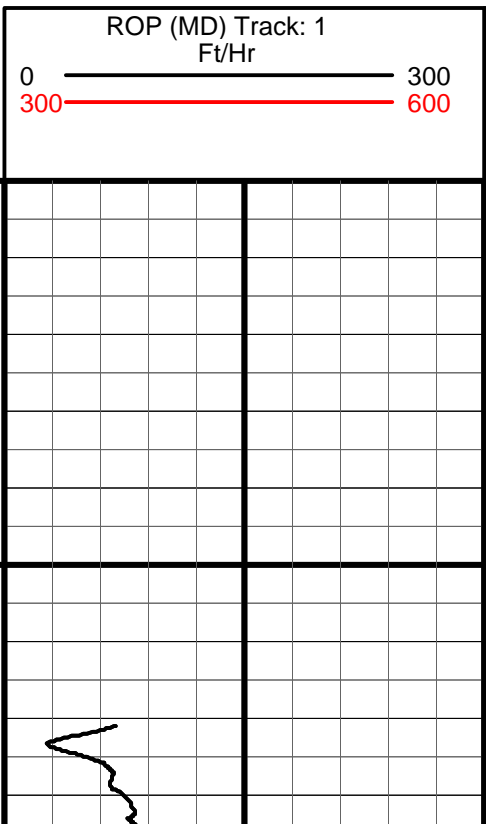
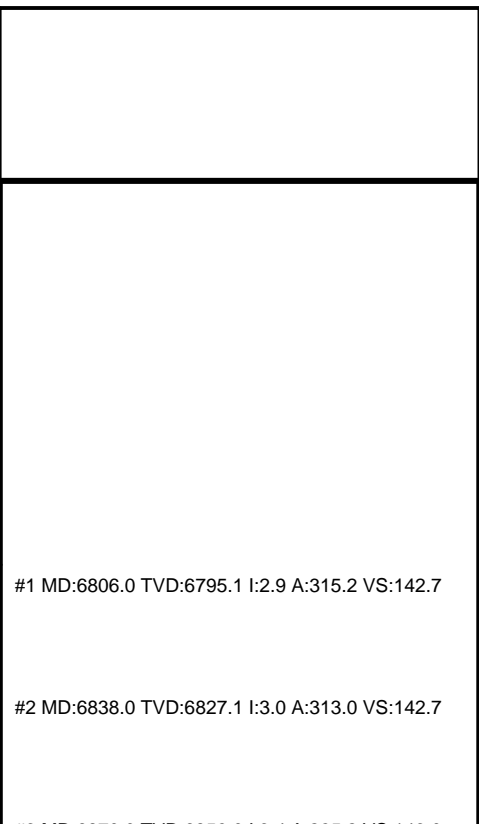
Comment 3:

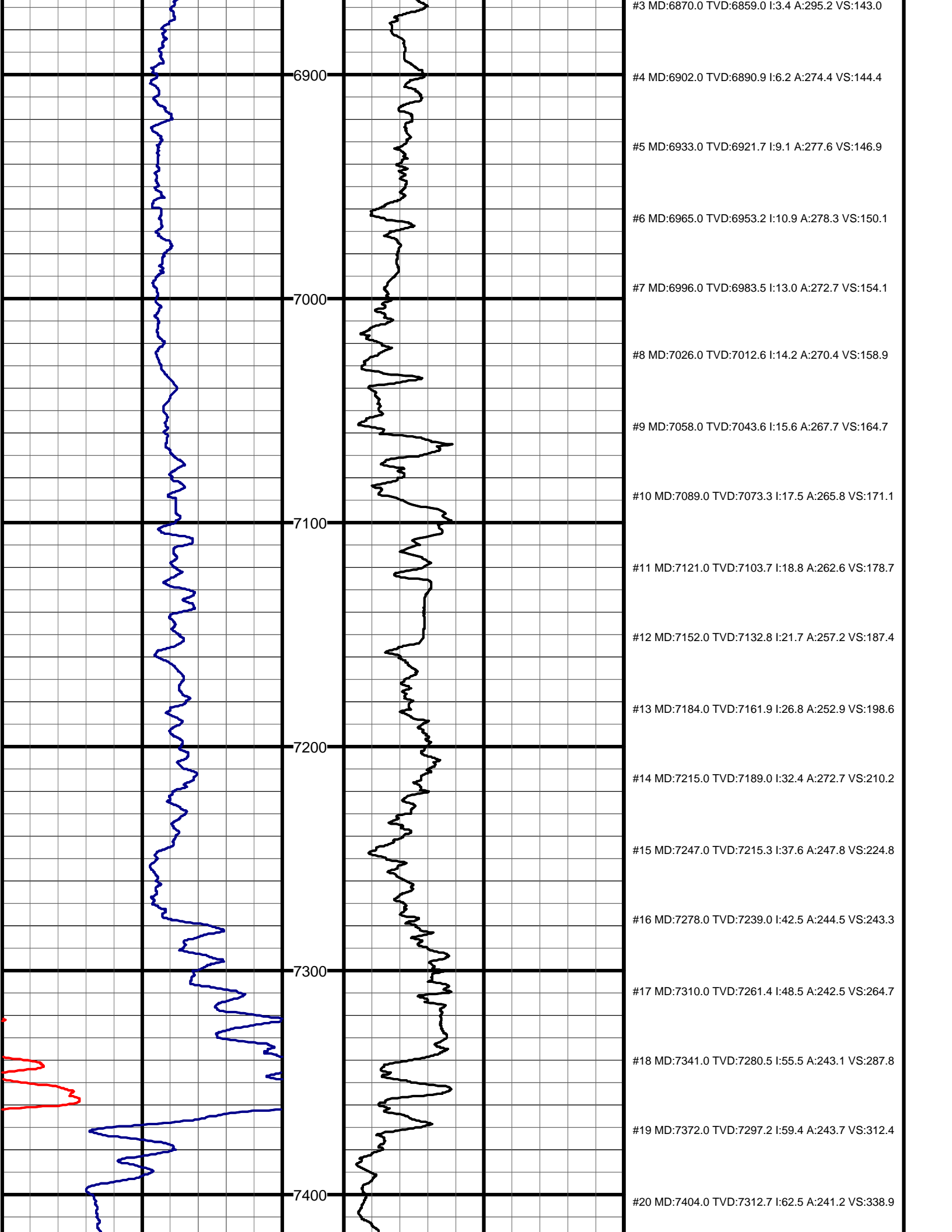
Comment 4:

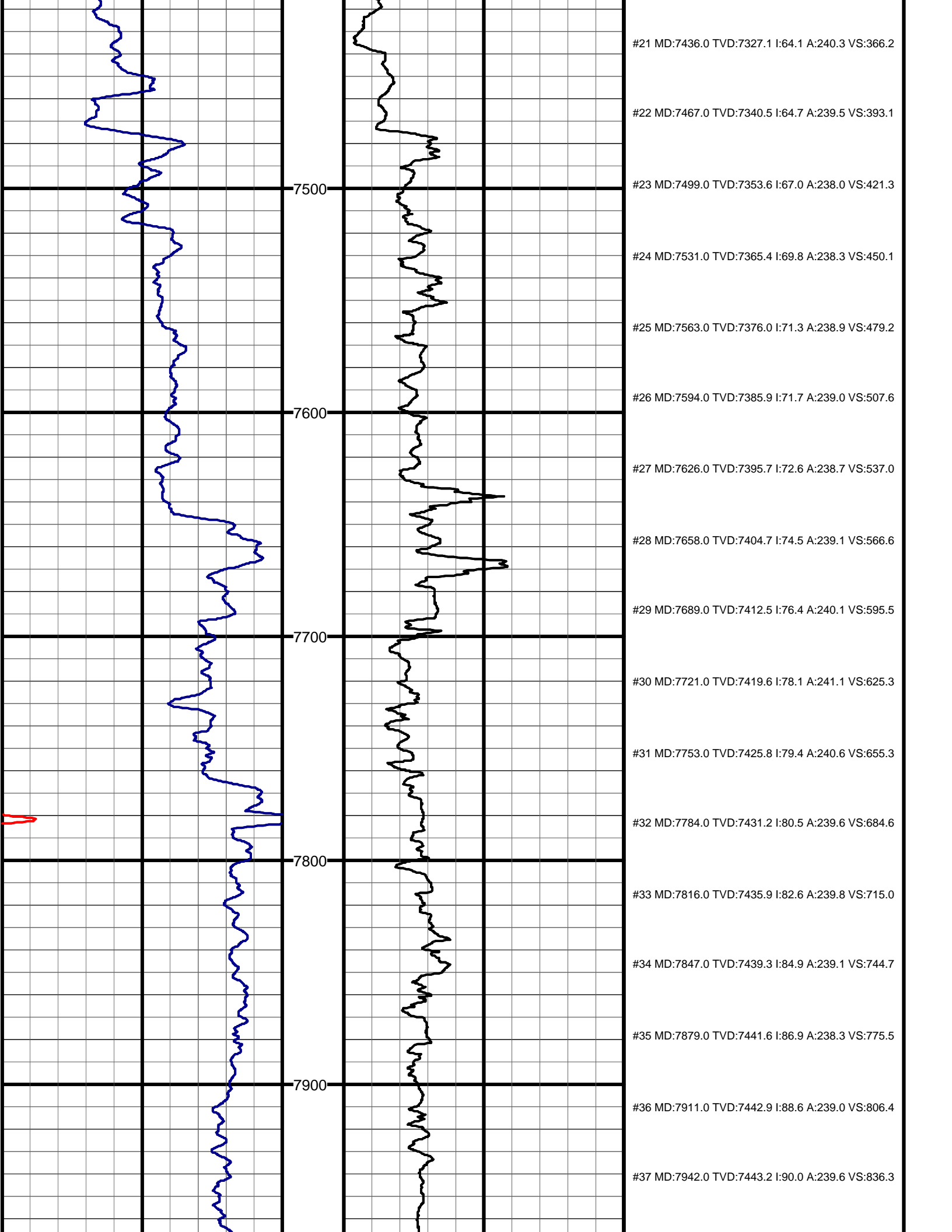
Comment 5:

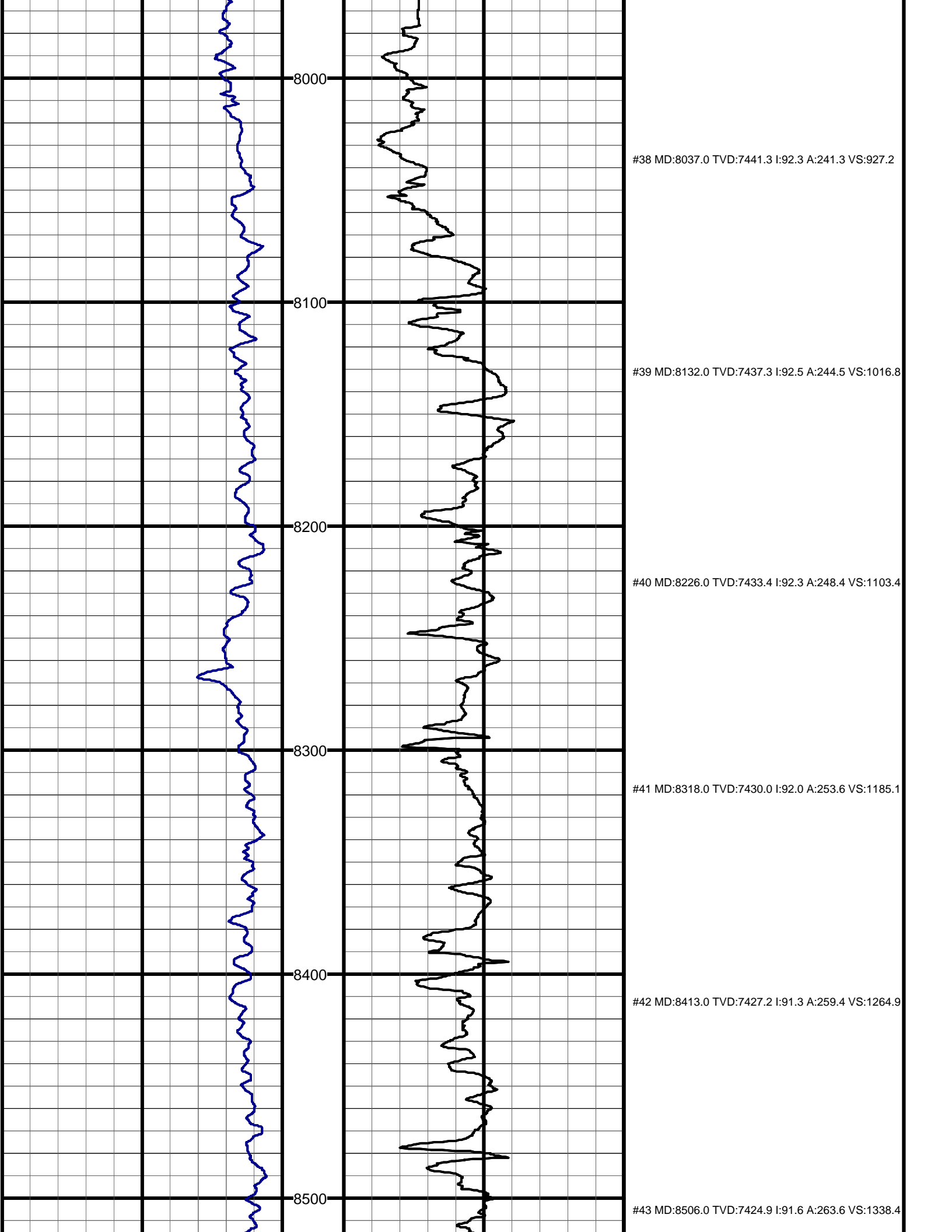
Hole Data			Casing Record		
Size	From	To	Size	From	To
12 1/4"	0'	2910'	13 5/8"	0'	2910'
8 3/4"	2910'	11070'	9 5/8"	2910'	11070'

Tool Run Data		Run #1	Run #2	Run #3	Run #4	Run #5
Tool S/N	133	133	133	169		
Cal Factor	4.06	4.06	4.06	4.06		
Gamma Offset	59'	63'	59'	63'		
Start Depth	6840'	7049'	7154'	7336'		
Start Date	8/21/10	8/23/10	8/24/10	8/24/10		
Start Time	02:00	04:00	02:00	22:00		
End Depth	7049'	7154'	7336'	11070'		
End Date	8/23/10	8/24/10	8/24/10	7/29/10		
End Time	02:00	02:00	20:00	08:00		









8000

#38 MD:8037.0 TVD:7441.3 I:92.3 A:241.3 VS:927.2

8100

#39 MD:8132.0 TVD:7437.3 I:92.5 A:244.5 VS:1016.8

8200

#40 MD:8226.0 TVD:7433.4 I:92.3 A:248.4 VS:1103.4

8300

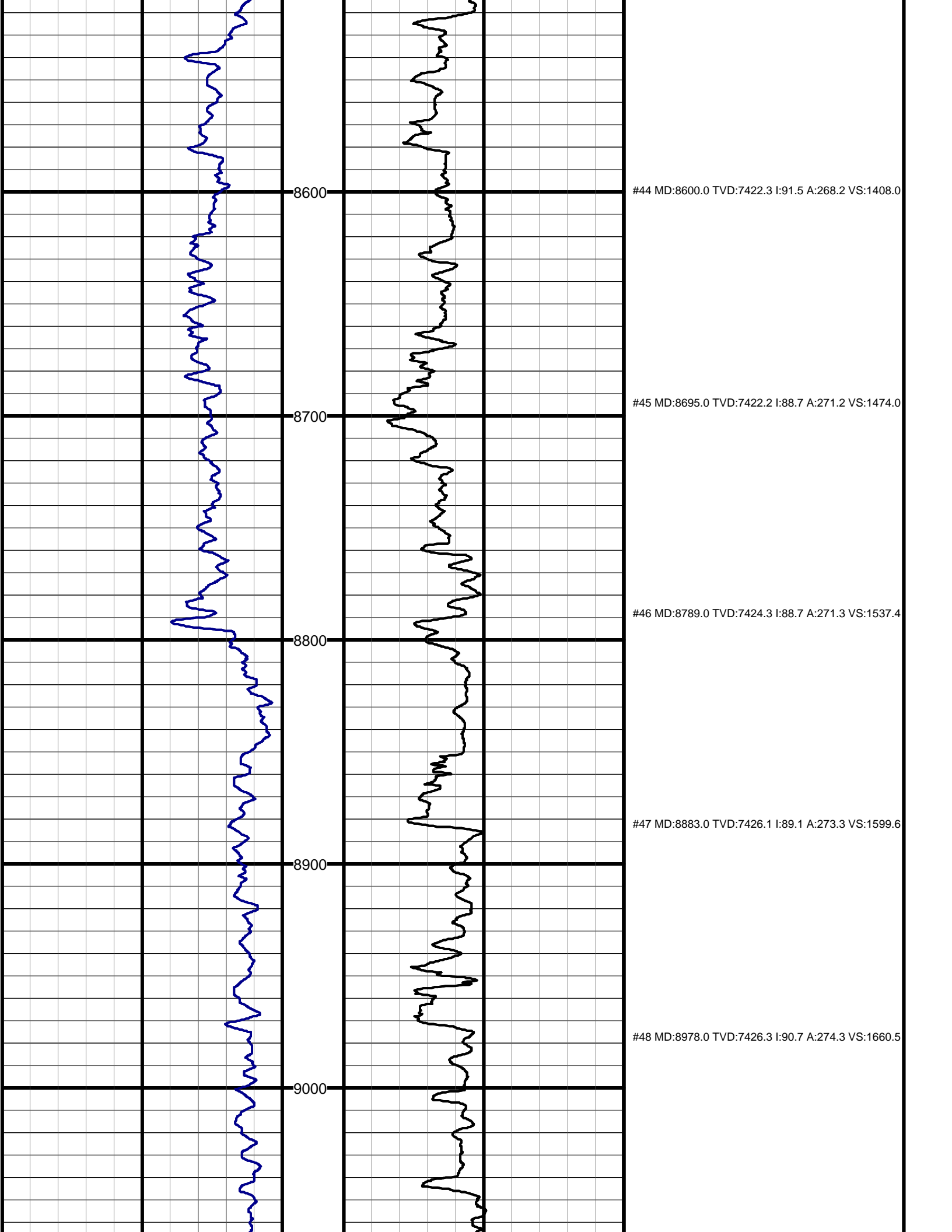
#41 MD:8318.0 TVD:7430.0 I:92.0 A:253.6 VS:1185.1

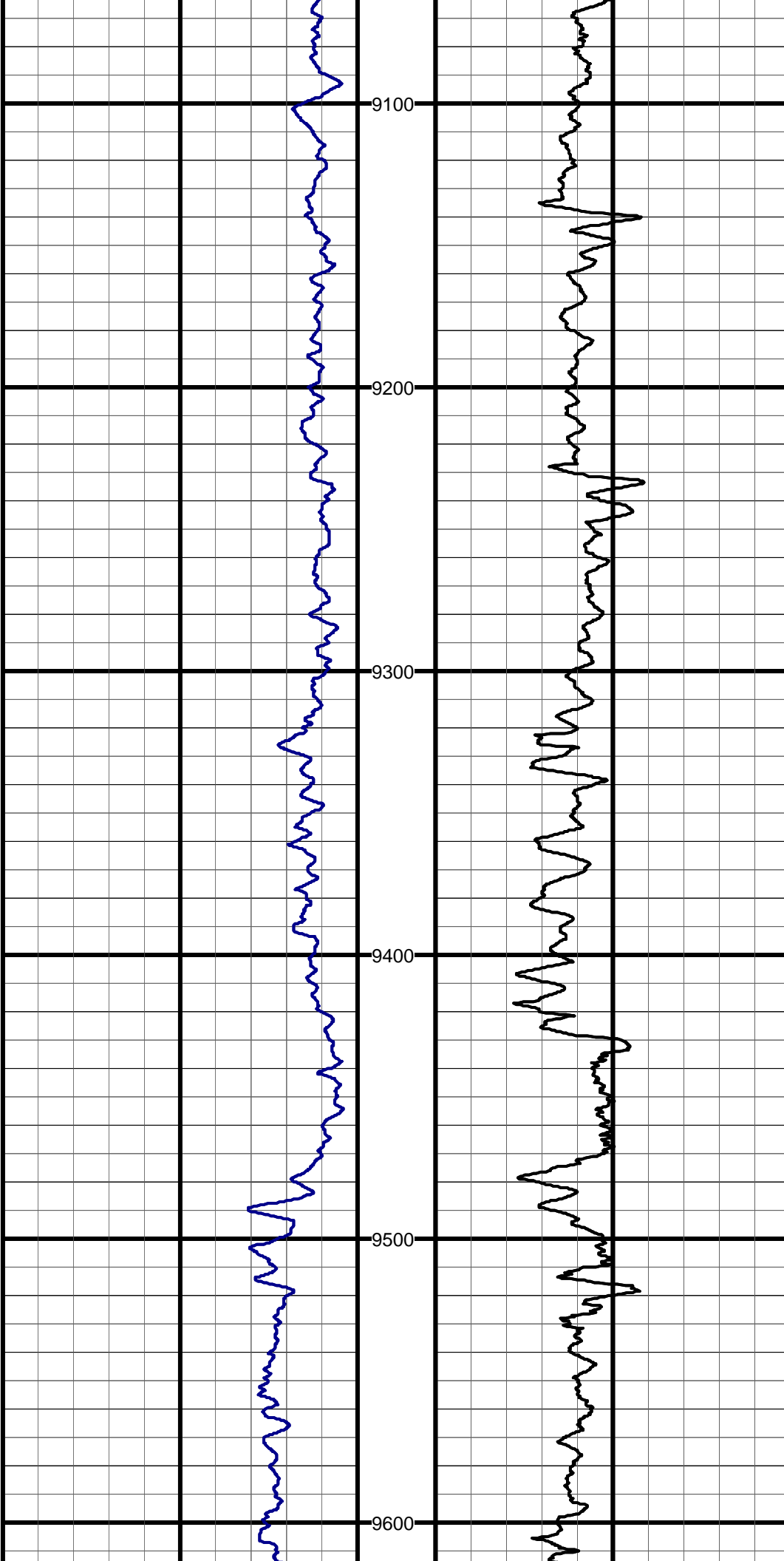
8400

#42 MD:8413.0 TVD:7427.2 I:91.3 A:259.4 VS:1264.9

8500

#43 MD:8506.0 TVD:7424.9 I:91.6 A:263.6 VS:1338.4





#49 MD:9072.0 TVD:7424.9 I:90.9 A:274.9 VS:1719.8

9100

#50 MD:9165.0 TVD:7423.6 I:90.7 A:274.5 VS:1778.3

9200

#51 MD:9260.0 TVD:7422.3 I:90.9 A:274.2 VS:1838.6

9300

#52 MD:9354.0 TVD:7420.7 I:91.1 A:274.3 VS:1898.3

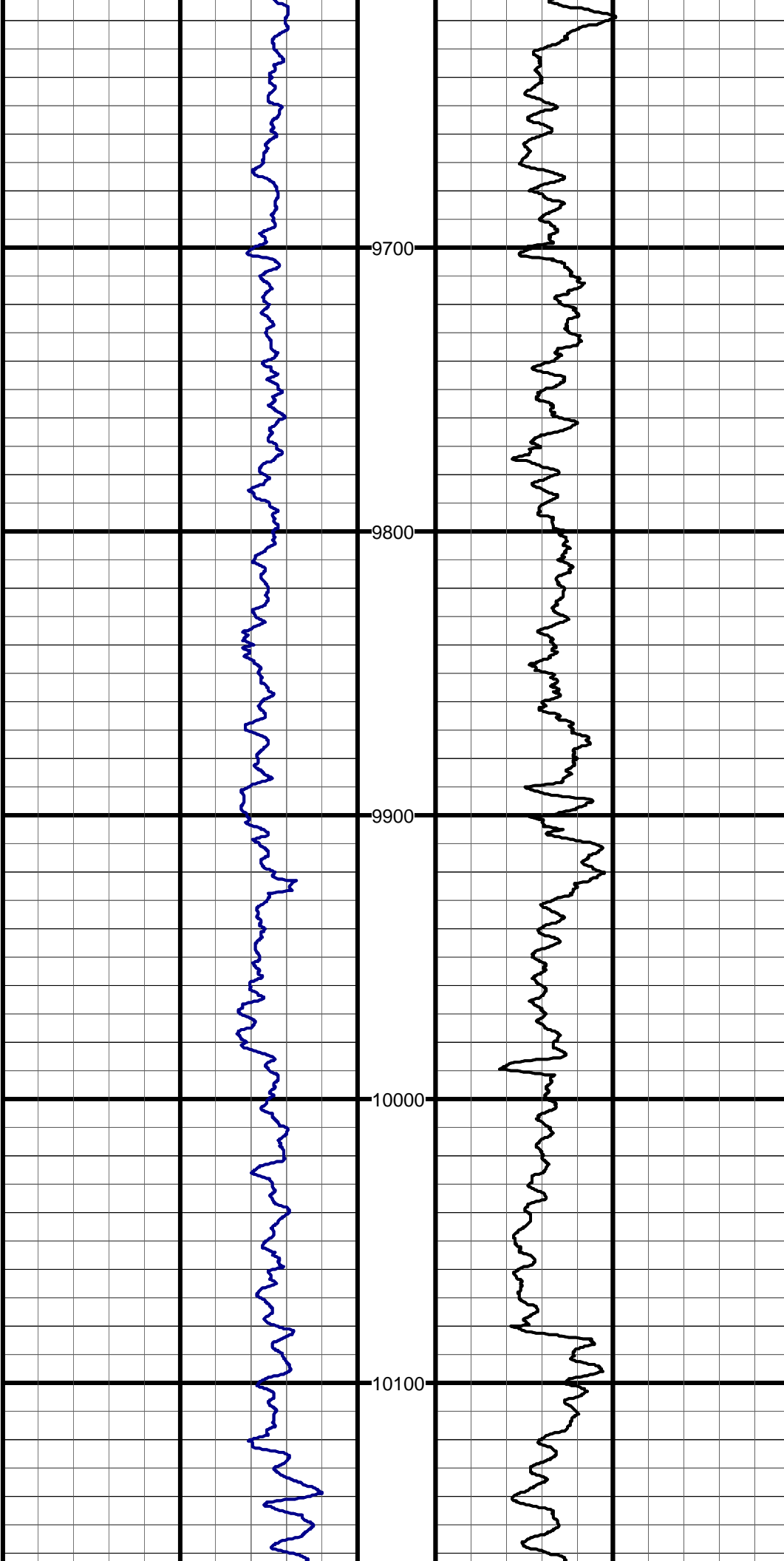
9400

#53 MD:9449.0 TVD:7418.6 I:91.4 A:274.0 VS:1958.8

9500

#54 MD:9544.0 TVD:7416.6 I:91.0 A:274.1 VS:2019.4

9600



#55 MD:9638.0 TVD:7415.3 I:90.6 A:273.9 VS:2079.5

9700

#56 MD:9733.0 TVD:7414.6 I:90.3 A:274.1 VS:2140.2

9800

#57 MD:9828.0 TVD:7414.2 I:90.1 A:273.8 VS:2200.9

9900

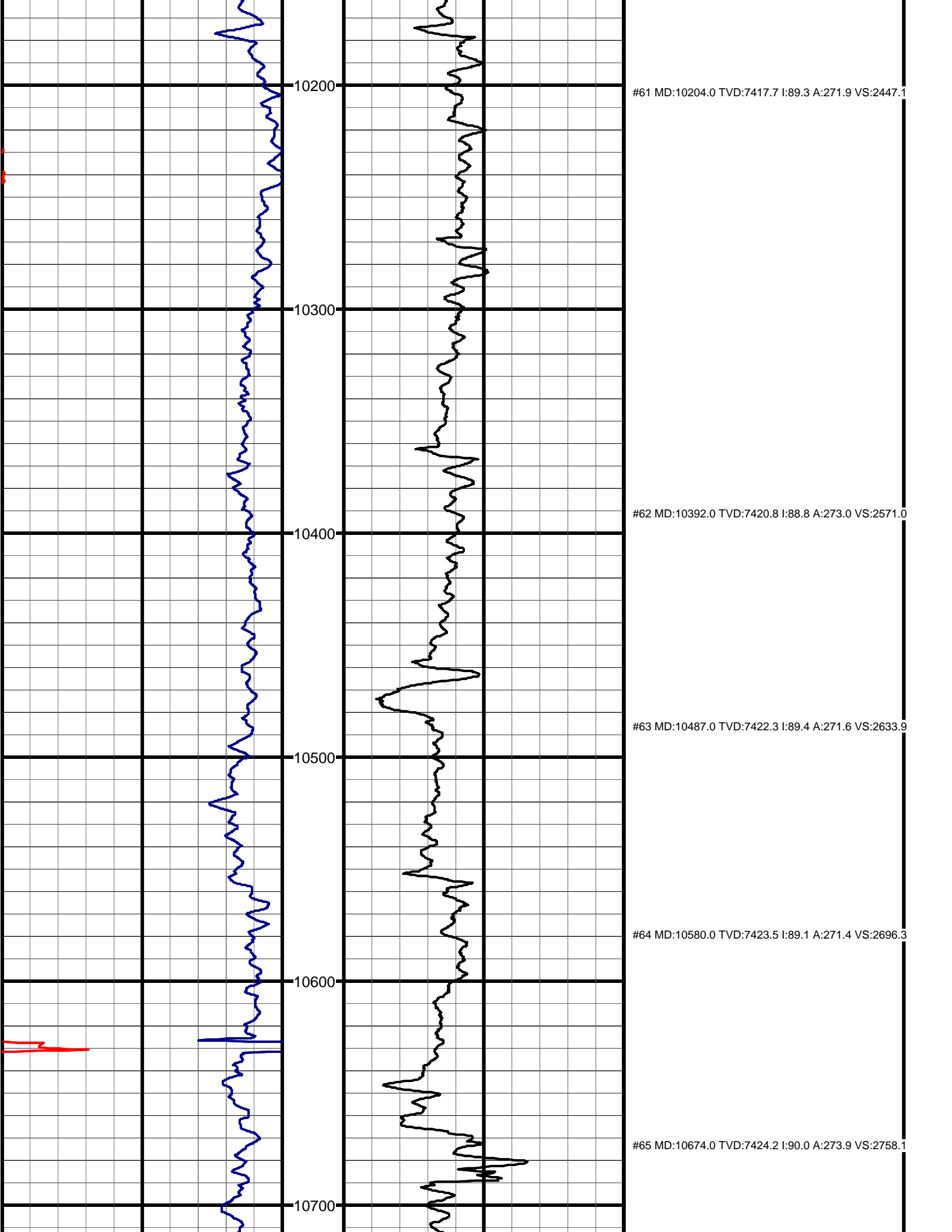
#58 MD:9923.0 TVD:7414.6 I:89.5 A:272.9 VS:2262.4

10000

#59 MD:10016.0 TVD:7415.1 I:89.8 A:273.0 VS:2323.2

10100

#60 MD:10110.0 TVD:7416.2 I:88.9 A:272.5 VS:2384.8



10200

#61 MD:10204.0 TVD:7417.7 I:89.3 A:271.9 VS:2447.1

10300

#62 MD:10392.0 TVD:7420.8 I:88.8 A:273.0 VS:2571.0

10400

#63 MD:10487.0 TVD:7422.3 I:89.4 A:271.6 VS:2633.9

10500

#64 MD:10580.0 TVD:7423.5 I:89.1 A:271.4 VS:2696.3

10600

#65 MD:10674.0 TVD:7424.2 I:90.0 A:273.9 VS:2758.1

10700



