



COMPLENSANT MEDDENSHITY LOG

HUNG NO.

ENERGEX OIL & GAS CORP.
 RUNNION #1
 PERMIT # PLEAS. 1532
 47-073

COMPANY ENERGEX OIL & GAS CORPORATION

WELL RUNNION #1

FIELD JEFFERSON DISTRICT

COUNTY PLEASANTS STATE WV

Location:

COW CREEK

Other Services:

DIFF. TEMP. -

IND. - N/N

Permanent Datum: GROUND LEVEL; Elev.: 961
 Log Measured From: GROUND LEVEL; Ft. Above Perm. Datum
 Drilling Measured From: GROUND LEVEL; Elev.: 961

Date: 12-13-82

Run No. ONE

Type Log: GAMMA RAY; FDC-CAL.; DIFF. TEMP.

Depth - Driller: 1940

Depth - Logger: 1938

Bottom logged interval: 1932 - 1936

Top logged interval: 840

Type fluid in hole: 840

Salinity PPM Cl:

Density:

Max rec. temp. deg F:

Operating rig time:

Recorded by: D. MILES

Witnessed by: MR. HUCK

Run No. 1

Bit No. 7 7/8

From 1938 To 840

Size 8 5/8

Wgt 0

To 840

Equipment Data

Total No	Source No	Panel No	Logging Unit	Location
2477	CSV-367	3199	7	WESTON

Calibration Data

AP. Scale	Gamma Ray Background CPS	Std. CPS	Ds. CPS AT	C D T		
				2.0	3.0	Dt. CPS AT
200	45	87	528	325	598	102

Logging Data

From	To	Speed Ft. Min	GR TC	FLUID DENS.	PG
1938	840	25	3	- 1.09	- 2.71 from 1938 to 840

GAMMA RAY
AFU COUNTS

200

LEPITHS

POROSITY

PERCENT

30 20 10 0 -10

BULK DENSITY

GRAMS CC

2.0 2.5 3.0

CALIPER

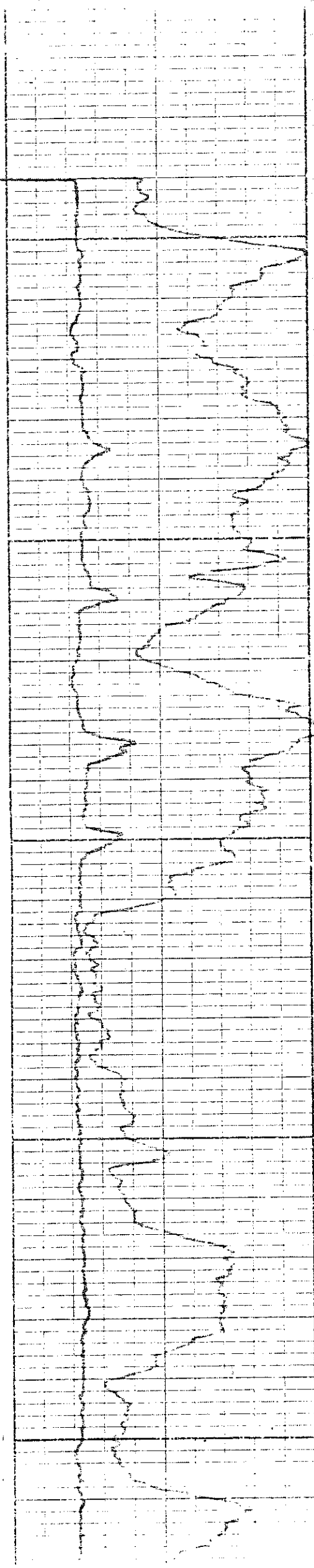
HOLE SIZE INCHES

16

HOLE SIZE INCHES

16

16



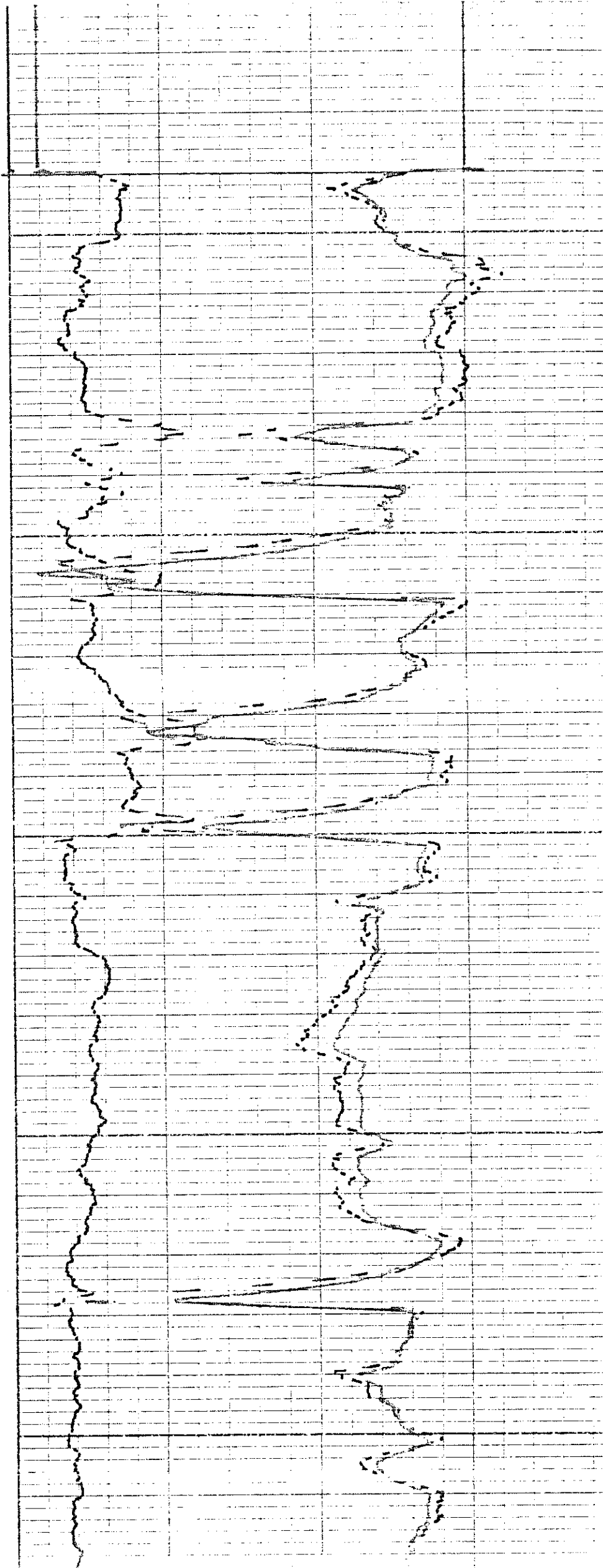
50

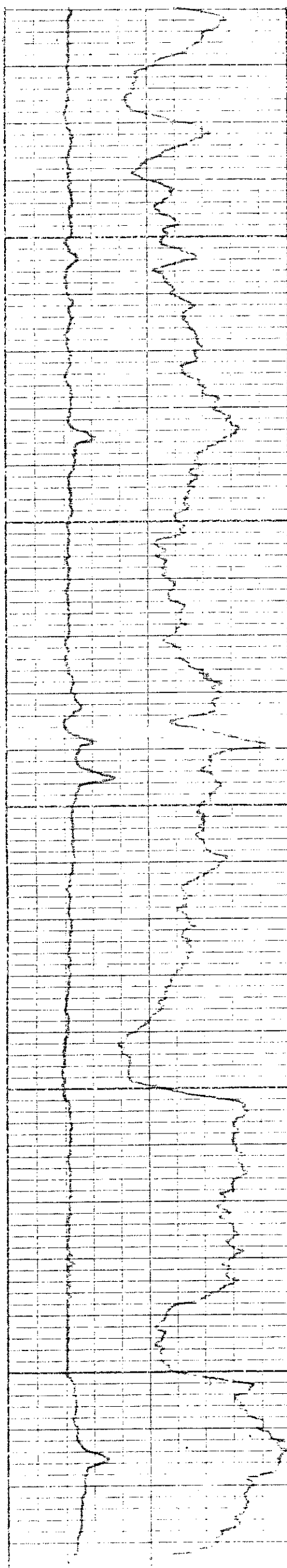
0

50

1000

50





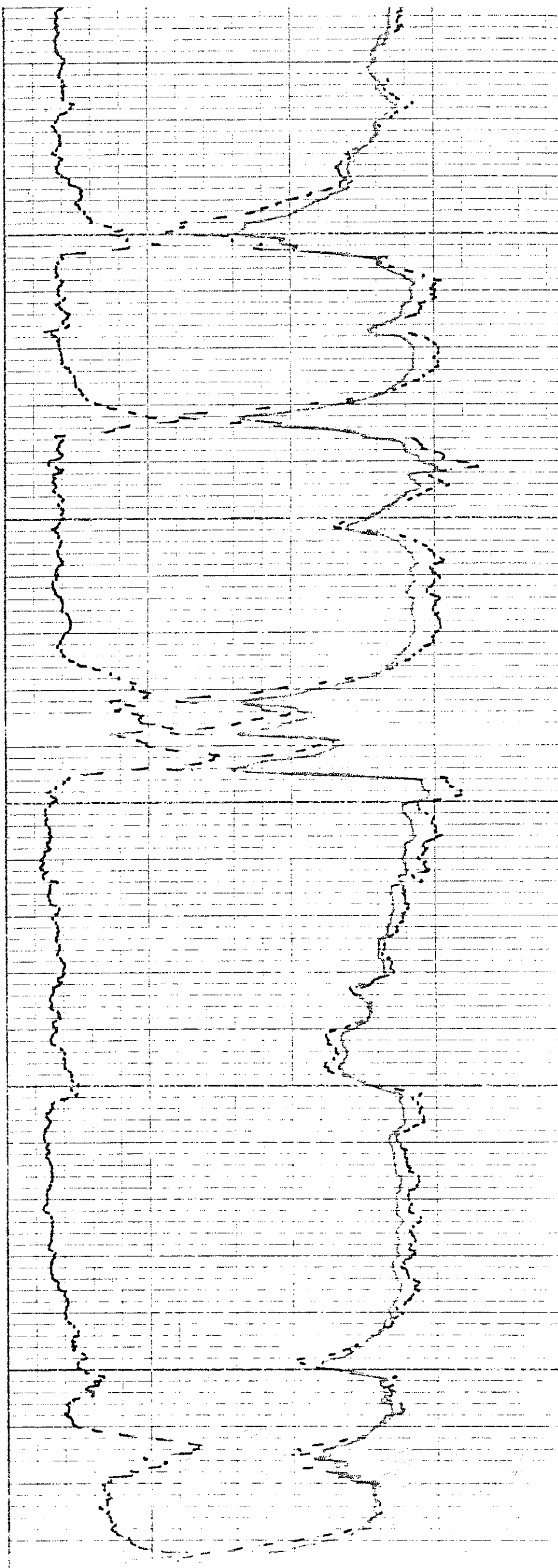
1100

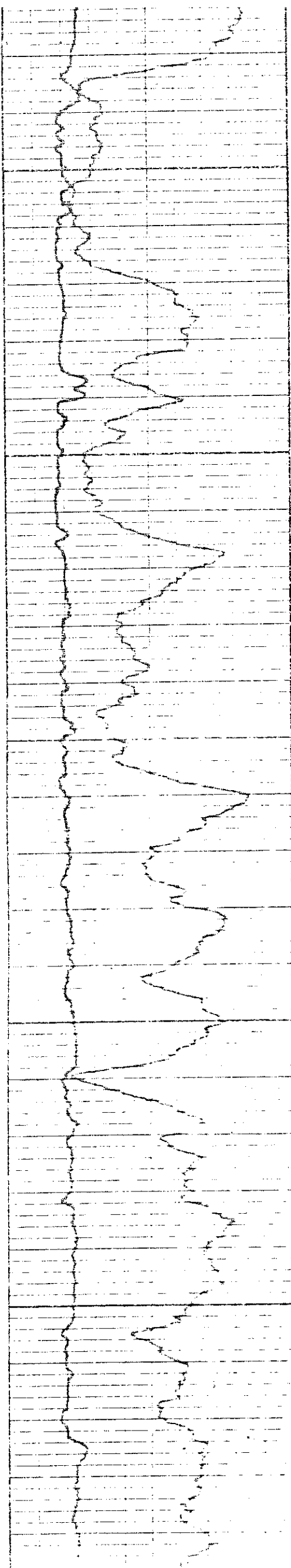
50

1200

50

1300





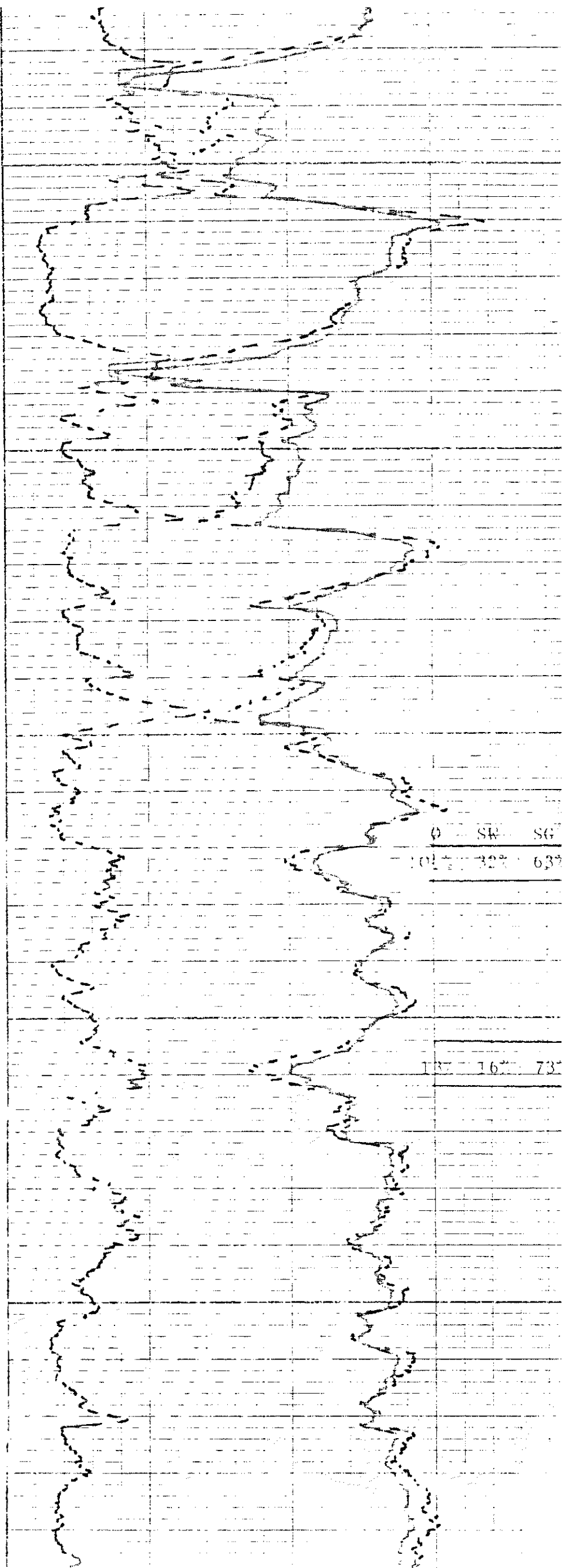
50

1400

30

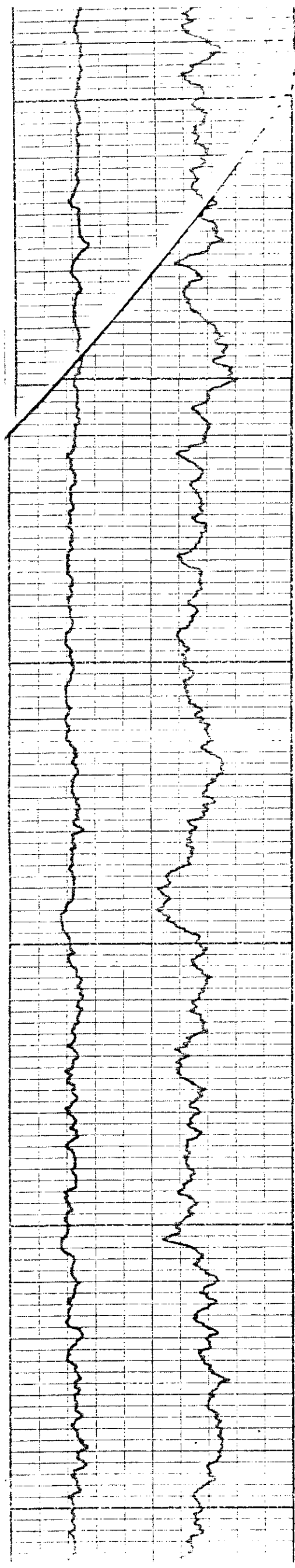
1500

50



ϕ	SW	SG
101	32%	63%

107	16%	73%
-----	-----	-----



600

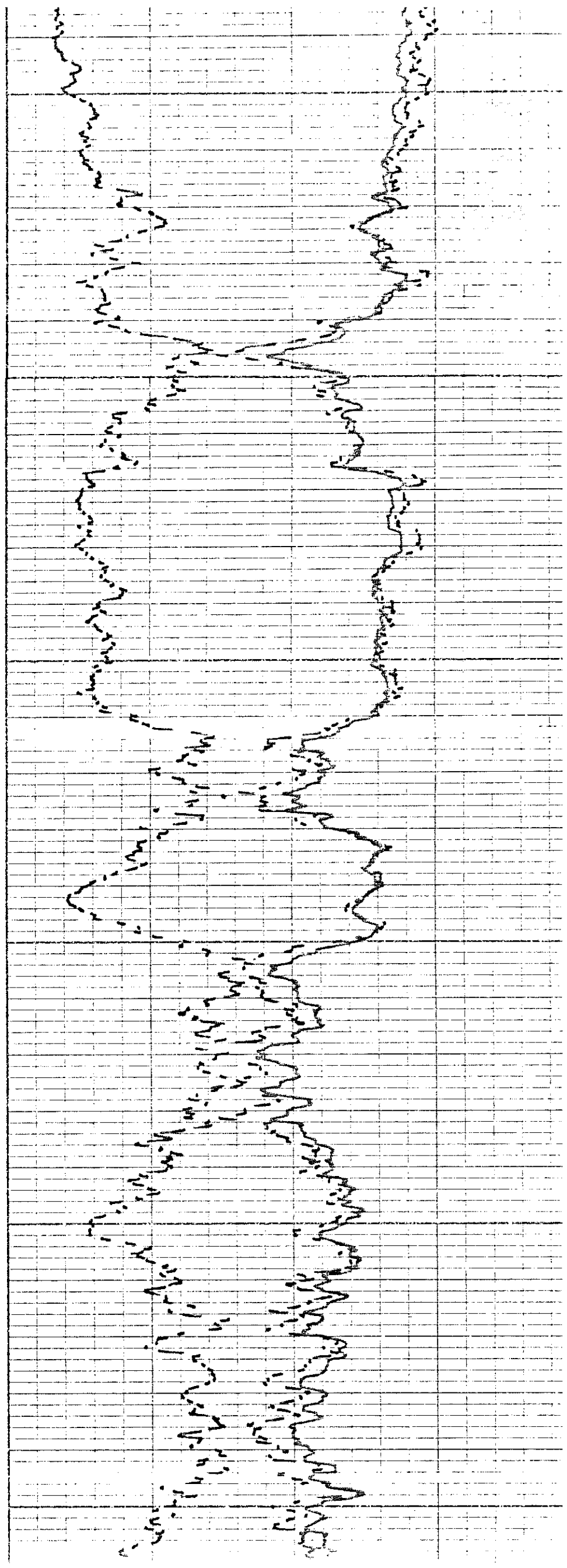
50

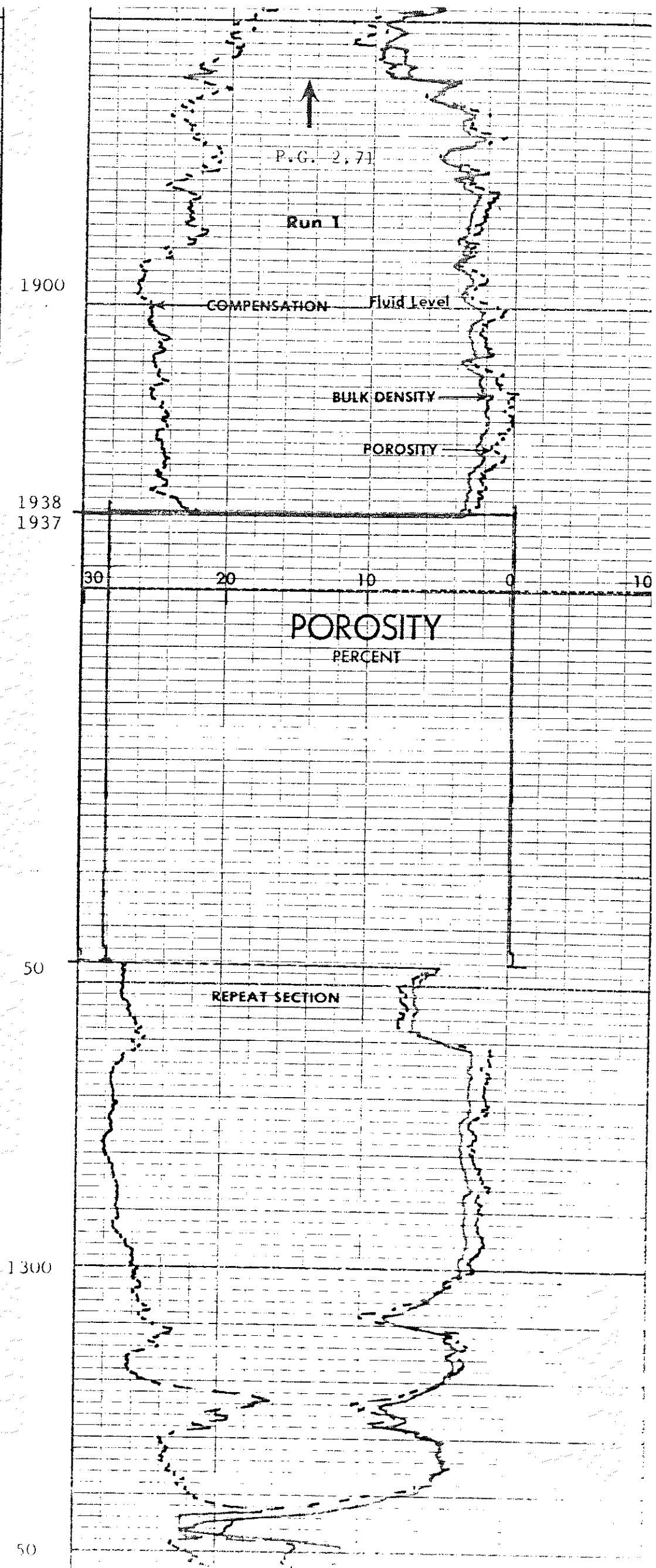
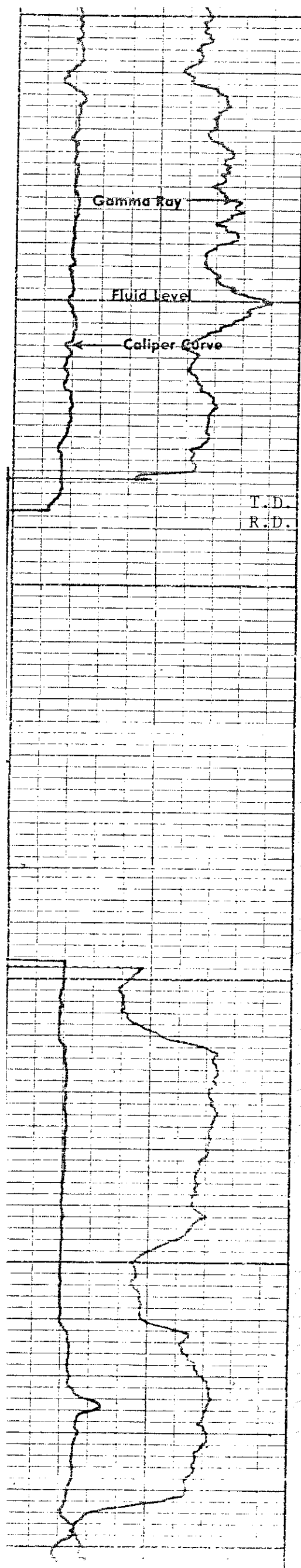
1700

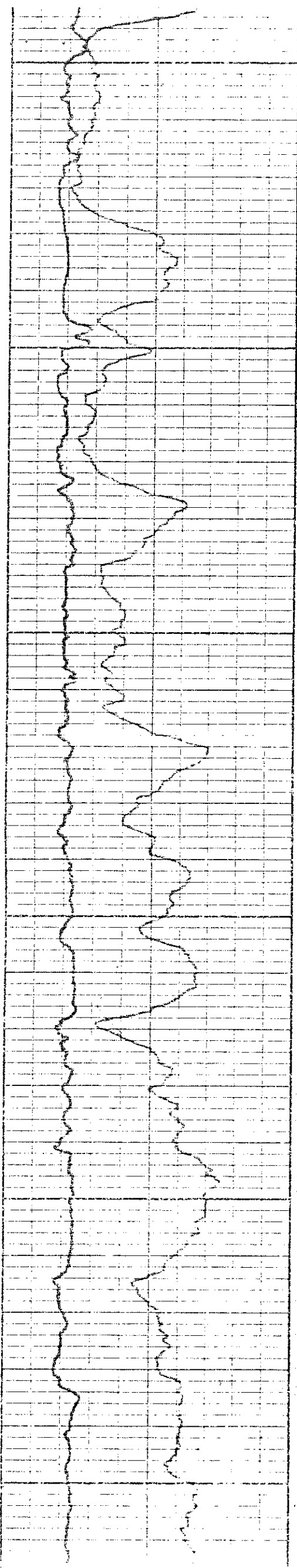
50

1800

50







50
1400
50
1500
50
1600

