



**RADIAL CEMENT BOND  
GAMMA RAY  
VDL, CCL**

Company ANTERO RESOURCES CORPORATION  
Well BILL UNIT 1H  
Field MARCELLUS  
County RITCHIE  
State WV

Company ANTERO RESOURCES CORPORATION  
Well BILL UNIT 1H  
Field MARCELLUS  
County RITCHIE State WV

Location: API #: 47085102400000 Other Services

Permanent Datum	SEC	TWP	RGE	Elevation
Log Measured From				K.B.
Drilling Measured From				D.F.
				G.L.

Date	1-10-19			
Run Number	1			
Depth Driller	13366'			
Depth Logger	6932			
Bottom Logged Interval	6932			
Top Log Interval	SURFACE			
Open Hole Size	5.5" CASING			
Type Fluid	WATER			
Density / Viscosity	N/A			
Max. Recorded Temp.	135.8 DEG			
Estimated Cement Top	760'			
Time Well Ready	N/A			
Time Logger on Bottom	16:35			
Equipment Number	640		CREW	
Location	BRIDGEPORT WW		K NICHOLAS	
Recorded By	PAT DAVIDSON		J TATE	
Witnessed By	JOHN MAXWELL		J AMAN	

Borehole Record Casing Record

Run Number	Bit	From	To	Size	Weight	From	To
				13.375		SURFACE	608'
				9.625		SURFACE	2620'
				5.5	23#	SURFACE	13366'

<<< Fold Here >>>

All interpretations are opinions based on inferences from electrical or other measurements and we cannot and do not guarantee the accuracy or correctness of any interpretation, and we shall not, except in the case of gross or willful negligence on our part, be liable or responsible for any loss, costs, damages, or expenses incurred or sustained by anyone resulting from any interpretation made by any of our officers, agents or employees. These interpretations are also subject to our general terms and conditions set out in our current Price Schedule.

**Comments**

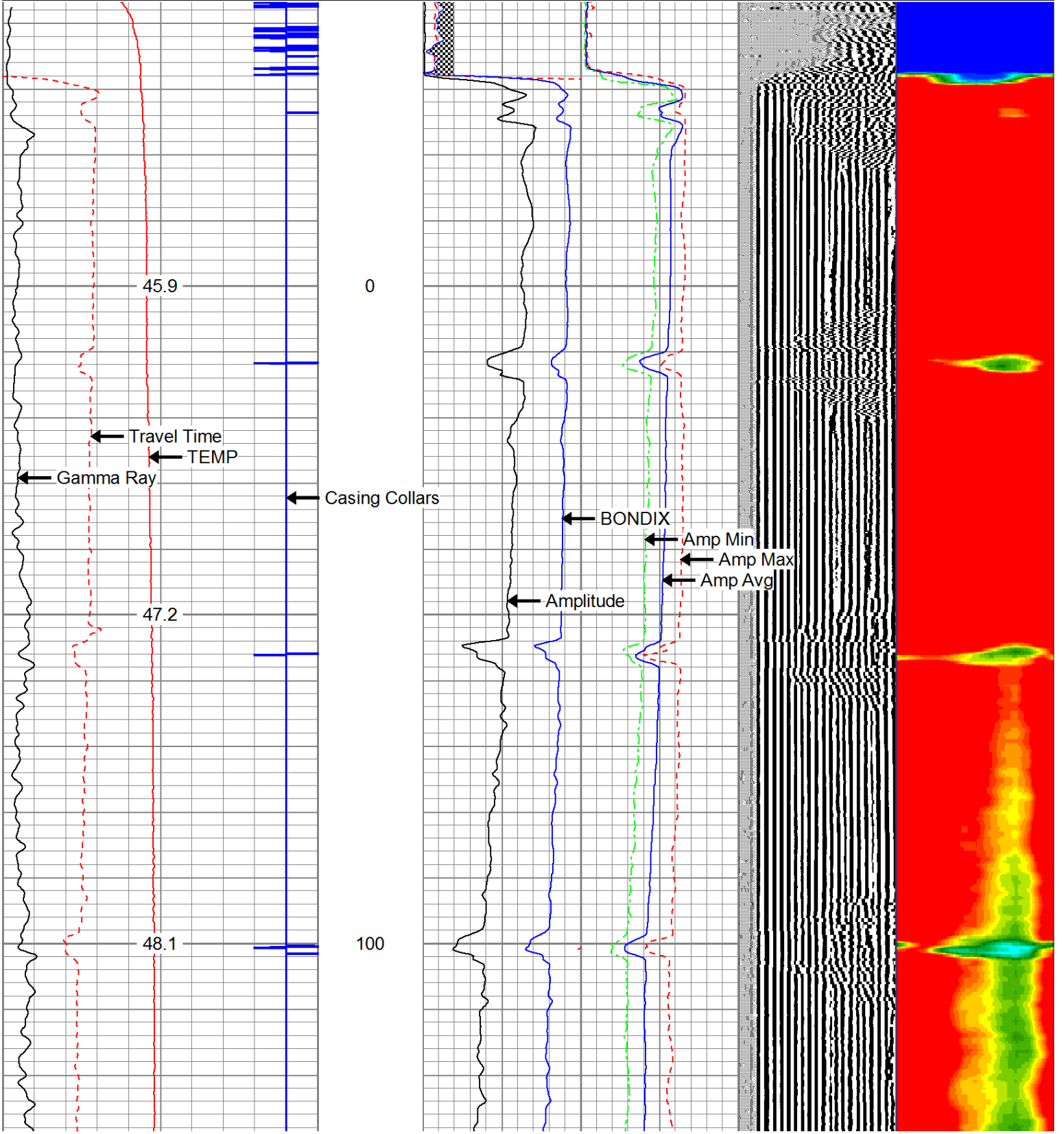
CBL IS NOT CORRELATED TO PRODUCTION CASING TALLEY MARKER JOINT  
DEPTH SHIFTED 0' TO KB AFTER CORRELATION  
MARKER JOINT RECORDED AT 5838' TO 5848'  
BOTTOM HOLE TEMP DEG 135  
RAN UNDER PRESSURE @1500PSI

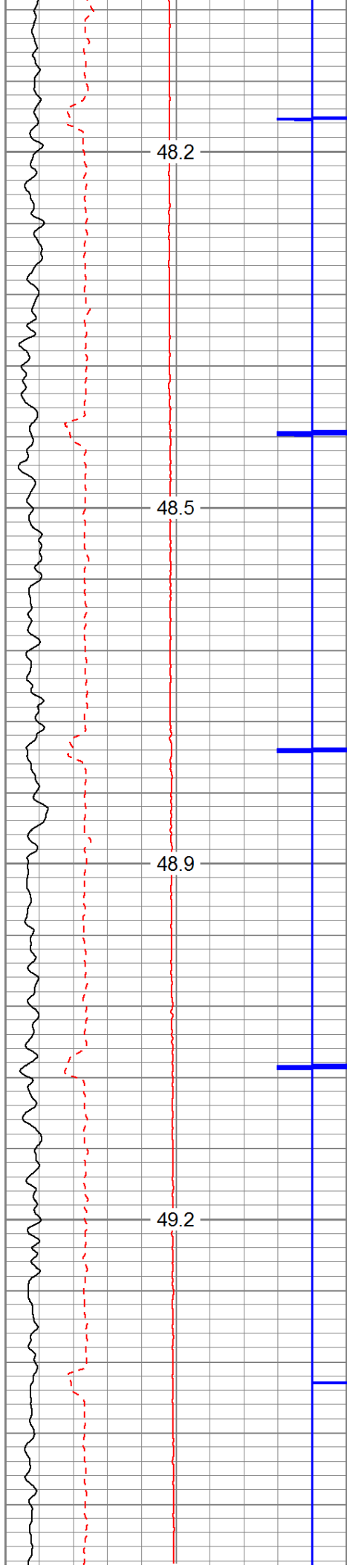


**MAIN PASS 1500 PSI**

Database File: f:\2019 antero\antero\_bil1h.db  
 Dataset Pathname: pass5.1  
 Presentation Format: antero  
 Dataset Creation: Thu Jan 10 18:31:57 2019 by Calc 7.0 B1  
 Charted by: Depth in Feet scaled 1:240

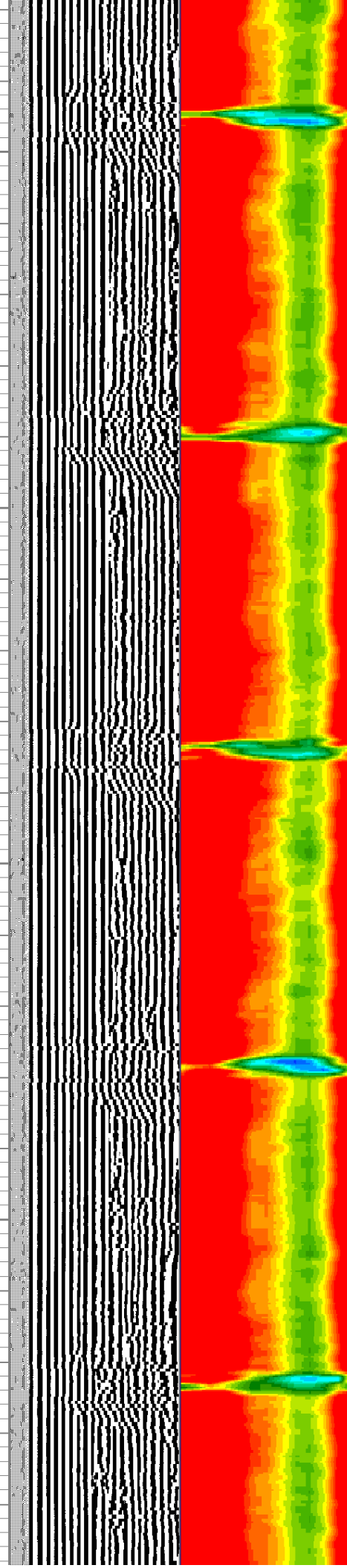
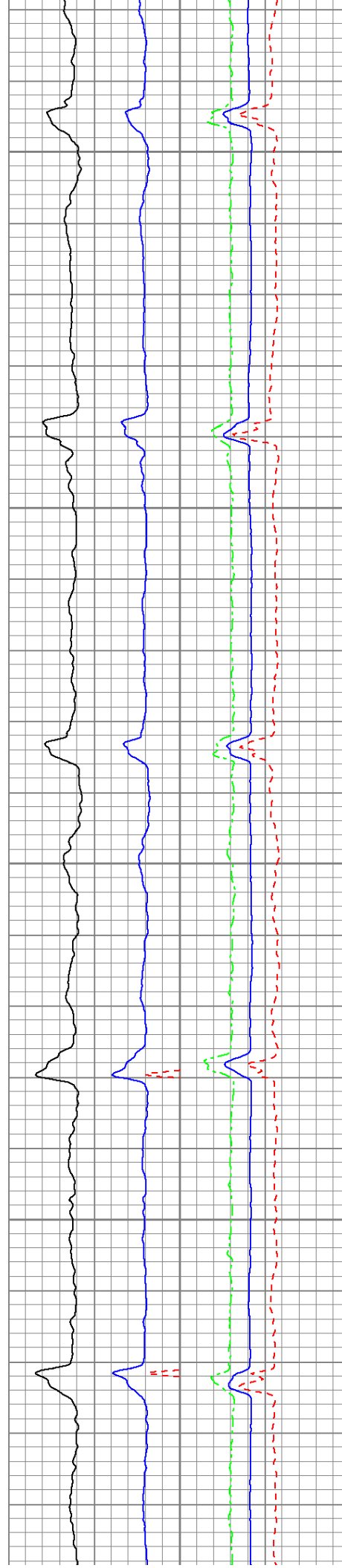
225	Travel Time (usec)	125	Amplitude	0	Amp Avg	150	200	VDL	1200	1	Sector Map	12
9	Casing Collars	-1	(mV)	100	Amp Max	150				20		60
0	Gamma Ray	180	AmpX5 (mV)	20	Amp Min	150						
0	TEMP (degF)	100	BONDIX	0								

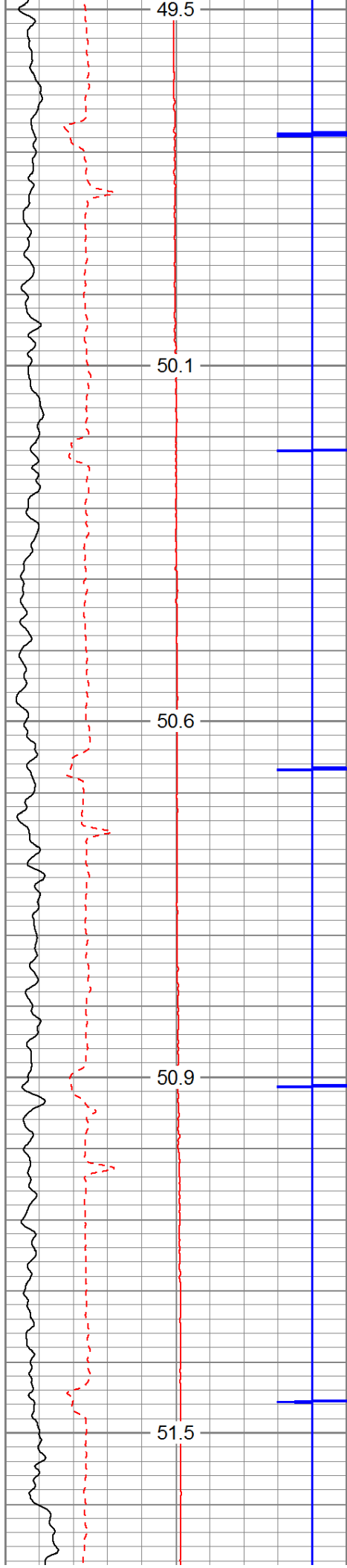




200

300





400

500

