



**RADIAL CEMENT BOND
GAMMA RAY
VDL, CCL**

Company ANTERO RESOURCES CORPORATION
Well BUFFALO UNIT 1H
Field MARCELLUS
County RITCHIE
State WV

Company ANTERO RESOURCES CORPORATION
Well BUFFALO UNIT 1H
Field MARCELLUS
County RITCHIE State WV

Location: API #: 47085102490000 Other Services

Permanent Datum	SEC	TWP	RGE	Elevation
Log Measured From	KB 30'			K.B.
Drilling Measured From				D.F.
				G.L.

Date	1-11-19						
Run Number	1						
Depth Driller	13590'						
Depth Logger	7044'						
Bottom Logged Interval	7044'						
Top Log Interval	SURFACE						
Open Hole Size	5.5" CASING						
Type Fluid	WATER						
Density / Viscosity	N/A						
Max. Recorded Temp.	138 DEG						
Estimated Cement Top	740'						
Time Well Ready	N/A						
Time Logger on Bottom	13:30						
Equipment Number	640		CREW				
Location	BRIDGEPORT WW		K NICHOLAS				
Recorded By	PAT DAVIDSON		J TATE				
Witnessed By	JOHN MAXWELL		J AMAN				
Borehole Record							
Run Number	Bit	From	To	Size	Weight	From	To
				13.375		SURFACE	598'
				9.625		SURFACE	2671'
				5.5	23#	SURFACE	13590'
Casing Record							

<<< Fold Here >>>

All interpretations are opinions based on inferences from electrical or other measurements and we cannot and do not guarantee the accuracy or correctness of any interpretation, and we shall not, except in the case of gross or willful negligence on our part, be liable or responsible for any loss, costs, damages, or expenses incurred or sustained by anyone resulting from any interpretation made by any of our officers, agents or employees. These interpretations are also subject to our general terms and conditions set out in our current Price Schedule.

Comments

CBL IS CORRELATED TO PRODUCTION CASING TALLEY MARKER JOINT
DEPTH SHIFTED +2 ' TO KB AFTER CORRELATION
MARKER JOINT RECORDED AT 5846' TO 5856'
BOTTOM HOLE TEMP 138 DEG
LOG RAN UNDER PRESSURE @1500PSI



MAIN PASS UNDER 1500PSI

Database File: antero_buffalo1h.db
 Dataset Pathname: merge1
 Presentation Format: antero
 Dataset Creation: Tue Jan 15 17:59:53 2019
 Charted by: Depth in Feet scaled 1:240

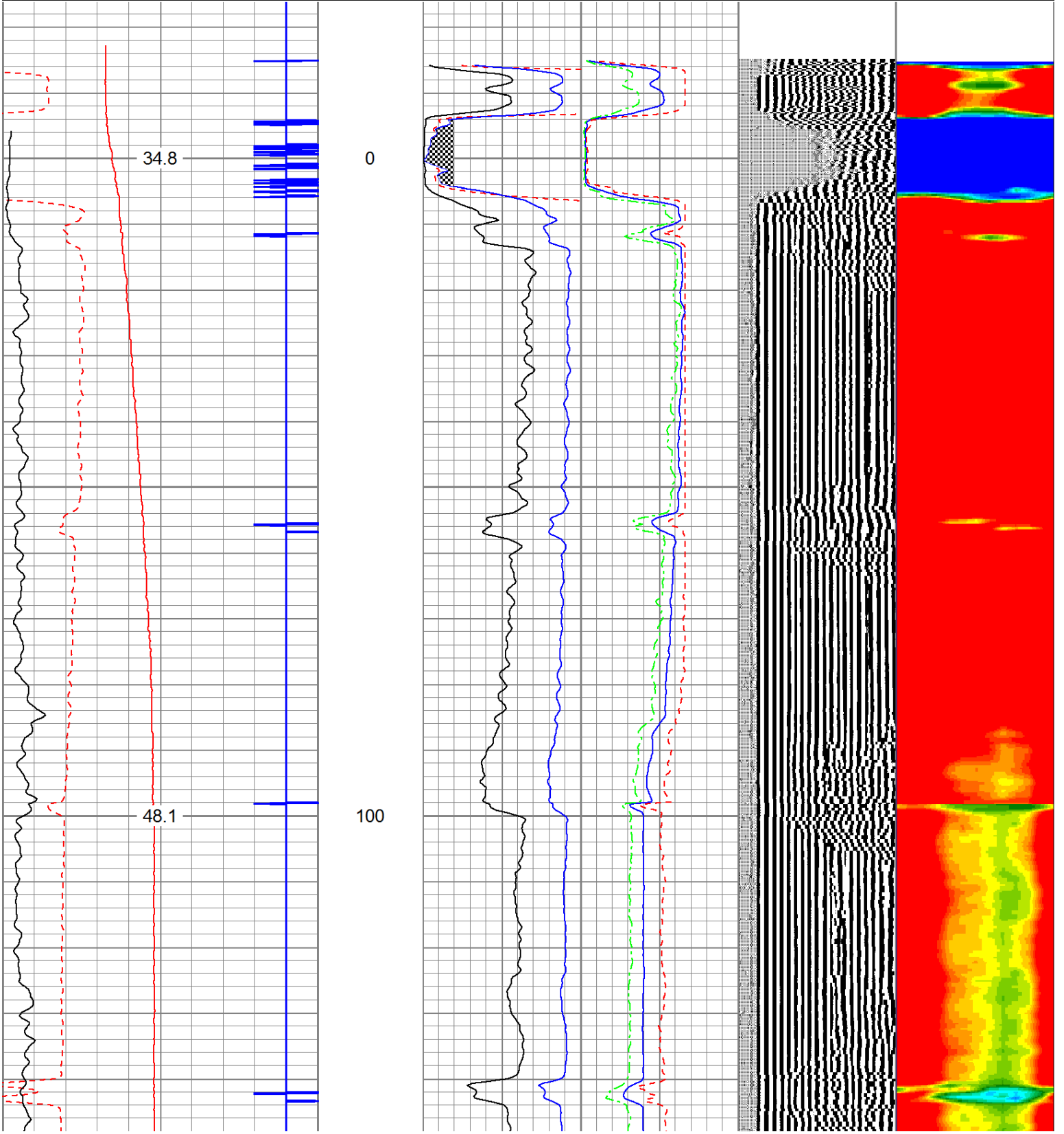
225	Travel Time (usec)	125
9	Casing Collars	-1
0	Gamma Ray	180
0	TEMP (degF)	100

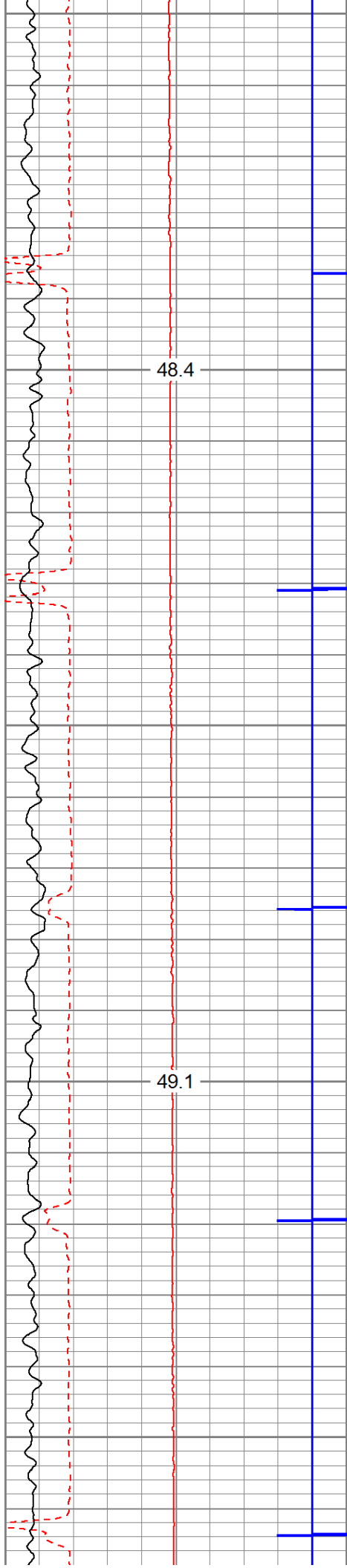
Amplitude	0	Amp Avg	150
(mV)	100	Amp Max	150
AmpX5 (mV)	20	Amp Min	150
BONDIX	0		

200	VDL	1200	1	Sector Map	12
			20		60



TEMP
(degF)





200

300

