



**RADIAL CEMENT BOND
GAMMA RAY
VDL, CCL**

Company ANTERO RESOURCES CORPORATION
Well WALDO UNIT 2H
Field MARCELLUS
County RITCHIE
State WV

Company ANTERO RESOURCES CORPORATION
Well WALDO UNIT 2H
Field MARCELLUS
County RITCHIE State WV

Location: API #: 47085103550000

Other Services

Permanent Datum	SEC	TWP	RGE	Elevation
Log Measured From	KB 30'			K.B.
Drilling Measured From				D.F.
				G.L.

Date	1-12-19						
Run Number	1						
Depth Driller	17997'						
Depth Logger	7077'						
Bottom Logged Interval	7077'						
Top Log Interval	SURFACE						
Open Hole Size	5.5" CASING						
Type Fluid	WATER						
Density / Viscosity	N/A						
Max. Recorded Temp.	138 DEG						
Estimated Cement Top	3280'						
Time Well Ready	N/A						
Time Logger on Bottom	10:57						
Equipment Number	640						
Location	BRIDGEPORT WW		K NICHOLAS				
Recorded By	PAT DAVIDSON		J TATE				
Witnessed By	JOHN MAXWELL		J AMAN				
Borehole Record							
Run Number	Bit	From	To	Size	Weight	From	To
				13.375		SURFACE	563'
				9.625		SURFACE	2562'
				5.5	23#	SURFACE	17997'
Casing Record							

<<< Fold Here >>>

All interpretations are opinions based on inferences from electrical or other measurements and we cannot and do not guarantee the accuracy or correctness of any interpretation, and we shall not, except in the case of gross or willful negligence on our part, be liable or responsible for any loss, costs, damages, or expenses incurred or sustained by anyone resulting from any interpretation made by any of our officers, agents or employees. These interpretations are also subject to our general terms and conditions set out in our current Price Schedule.

Comments

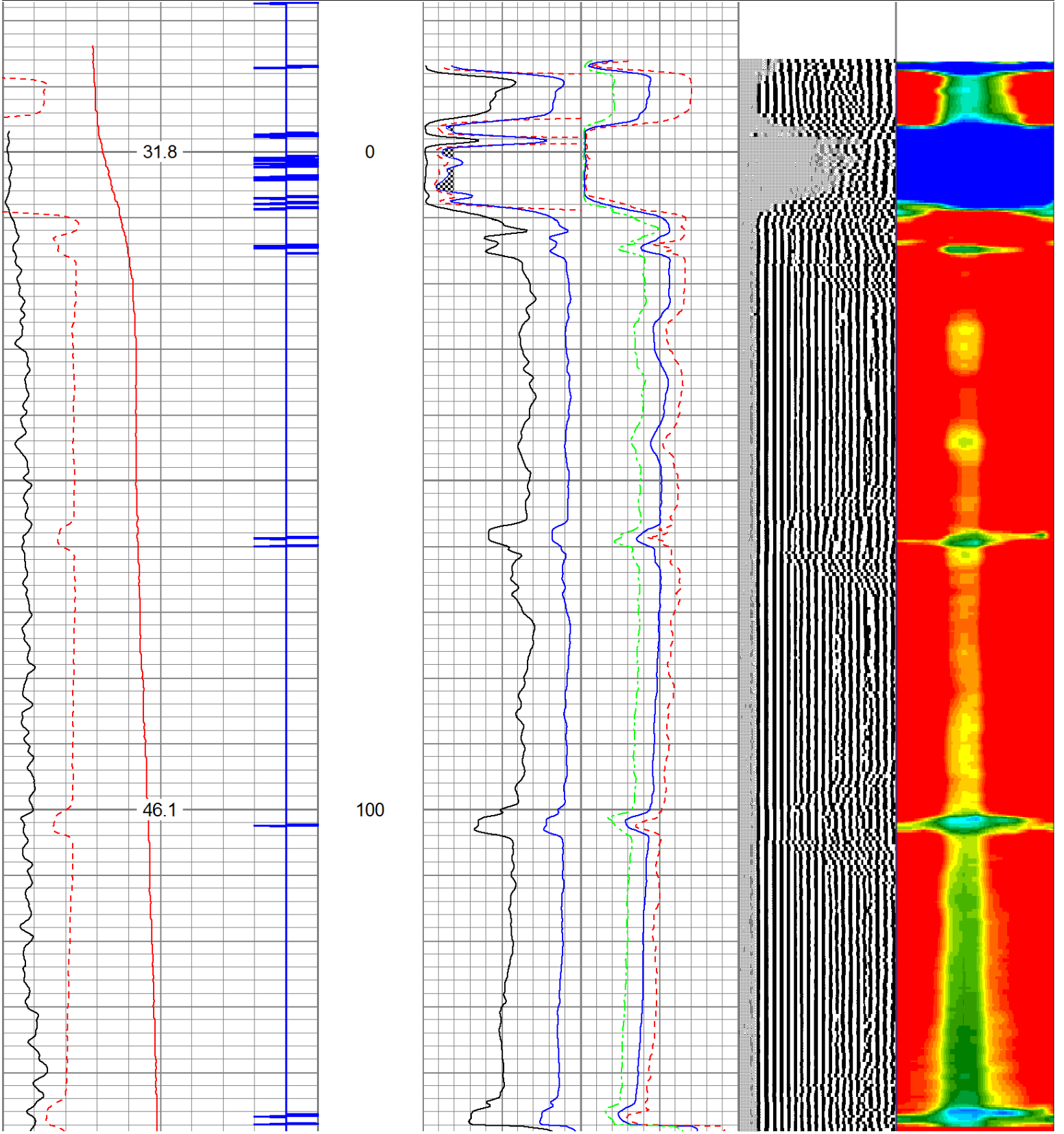
CBL IS CORRELATED TO PRODUCTION CASING TALLEY MARKER JOINT
DEPTH SHIFTED 0' TO KB AFTER CORRELATION
MARKER JOINT RECORDED AT 5891' TO 5902'
BOTTOM HOLE TEMP 138 DEG
LOG RAN UNDER PRESSURE @1500PSI

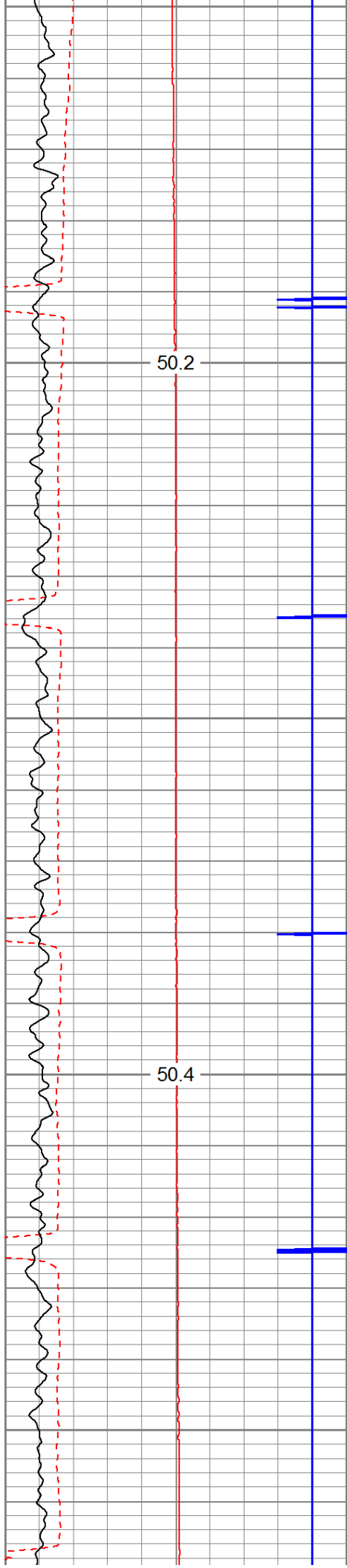


MAIN PASS 1500 PSI

Database File: antero_waldo2h.db
 Dataset Pathname: merge1
 Presentation Format: antero
 Dataset Creation: Tue Jan 15 20:01:57 2019
 Charted by: Depth in Feet scaled 1:240

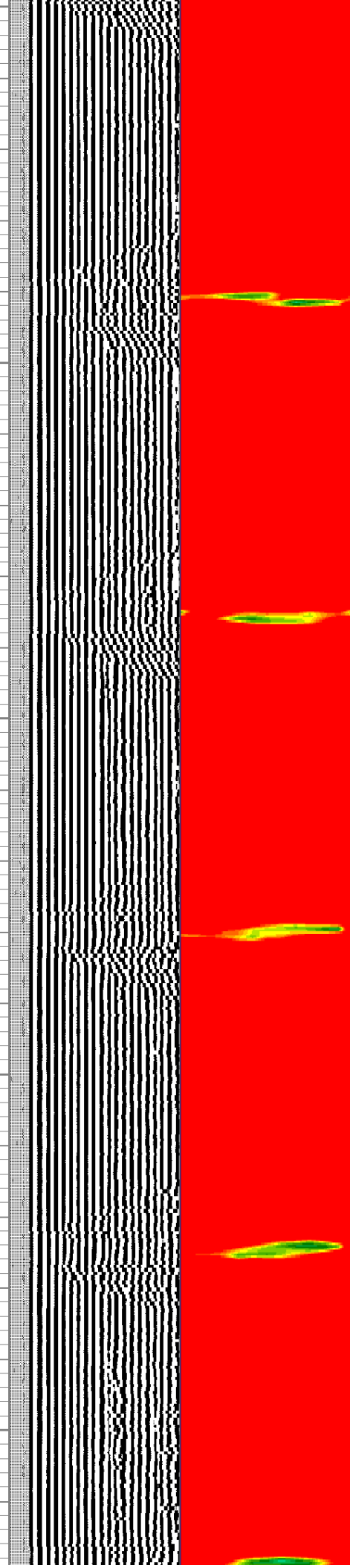
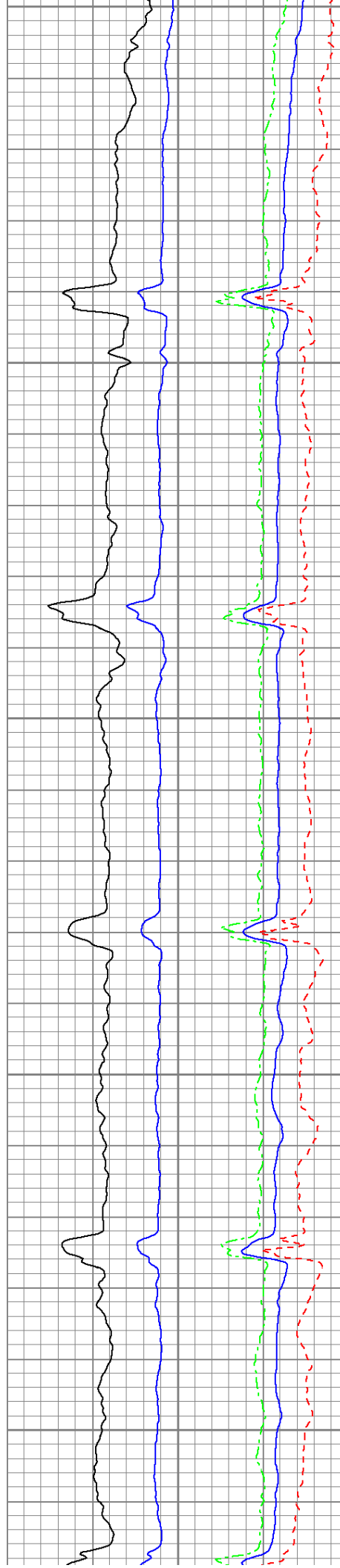
225	Travel Time (usec)	125	Amplitude	0	Amp Avg	150	200	VDL	1200	1	Sector Map	12
9	Casing Collars	-1	(mV)	100	Amp Max	150				20		60
0	Gamma Ray	180	AmpX5 (mV)	20	Amp Min	150						
0	TEMP (degF)	100	BONDIX	0								
	TEMP (degF)											

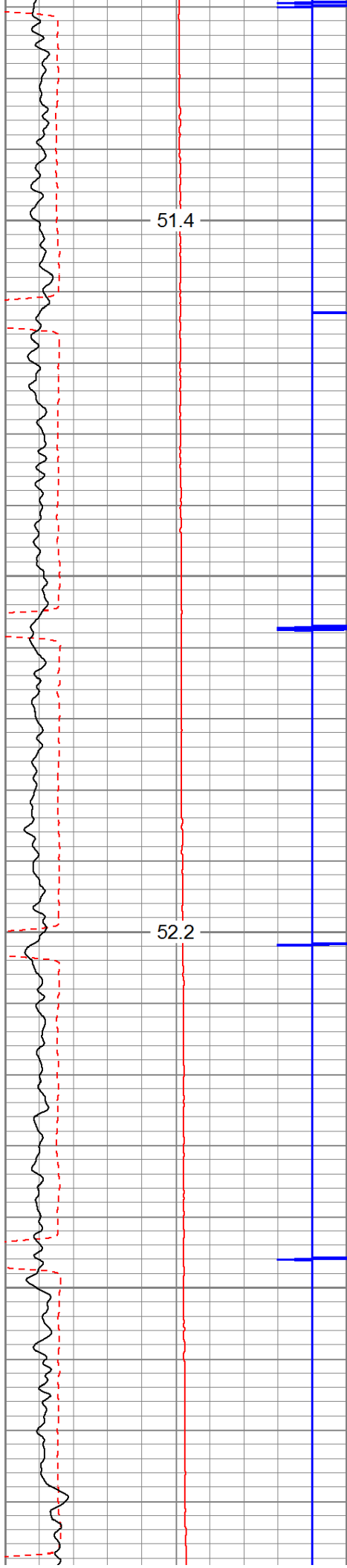




200

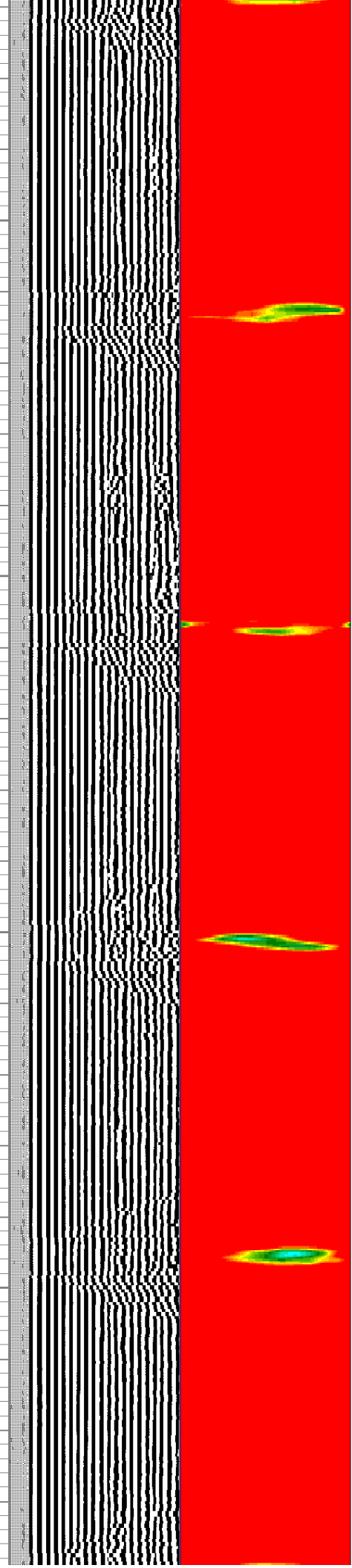
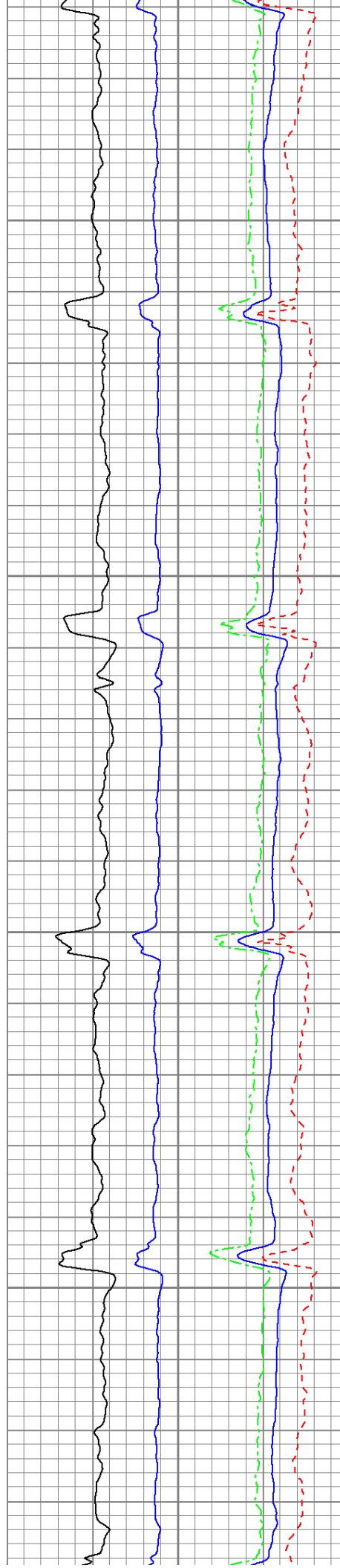
300

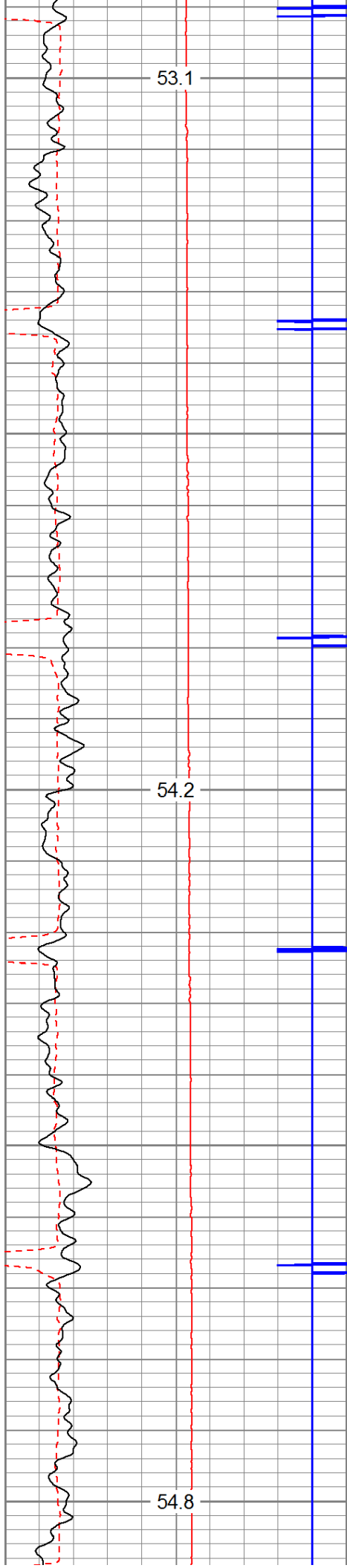




400

500





600

700

800

