



**RADIAL CEMENT BOND
GAMMA RAY/CCL/VDL**

Company ANTERO RESOURCES CORPORATION
 Well WINCHESTER UNIT 1H
 Field MARCELLUS
 County TYLER
 State W.V.

Company ANTERO RESOURCES CORPORATION
 Well WINCHESTER UNIT 1H
 Field MARCELLUS
 County TYLER State W.V.

Location: API #: 47095025150000

Other Services

SEC	TWP	RGE	Elevation	N/A	Elevation
Permanent Datum	G.L.		K.B. N/A		D.F. N/A
Log Measured From	K.B.		G.L. N/A		
Drilling Measured From	K.B. OF 25'				

Date	3/31/19
Run Number	ONE
Depth Driller	16786'
Depth Logger	6427'
Bottom Logged Interval	6427'
Top Log Interval	SURFACE
Open Hole Size	N/A
Type Fluid	H2O
Density / Viscosity	N/A
Max. Recorded Temp.	141 DEG
Estimated Cement Top	90'
Time Well Ready	N/A
Time Logger on Bottom	8:40
Equipment Number	340
Location	BRIDGEPORT, WV
Recorded By	JBOGGS
Witnessed By	MR. BOB REED

Borehole Record			Casing Record				
Run Number	Bit	From	To	Size	Weight	From	To
				20"	94LB	SURFACE	95'
				13 3/8"	54.5LB	SURFACE	375'
				9 5/8"	36LB	SURFACE	2625'
				5 1/2"	23LB	SURFACE	16786'

<<< Fold Here >>>

All interpretations are opinions based on inferences from electrical or other measurements and we cannot and do not guarantee the accuracy or correctness of any interpretation, and we shall not, except in the case of gross or willful negligence on our part, be liable or responsible for any loss, costs, damages, or expenses incurred or sustained by anyone resulting from any interpretation made by any of our officers, agents or employees. These interpretations are also subject to our general terms and conditions set out in our current Price Schedule.

Comments

THANK YOU FOR USING KLX ENERGY SERVICES
 LOG WAS RAN ON 5 1/2" CASING WITH 1500PSI ON CASING
 TOP OF CEMENT- 110'
 BOTTOM HOLE TEMP- 141 DEG
 MARKER JOINT ON LOG @ 5203'-5213'
 CORRECTED UP HOLE 8' TO PUT MARKER ON DEPTH WITH PIPE TALLY



Main Pass @ 1500 PSI

Database File: c:\warrior\data\2019 antero\antero-winchester unit 1h.db
 Dataset Pathname: pass4.6
 Presentation Format: antero f
 Dataset Creation: Mon Apr 01 08:40:13 2019 by Calc Std Casedhole 10081
 Charted by: Depth in Feet scaled 1:240

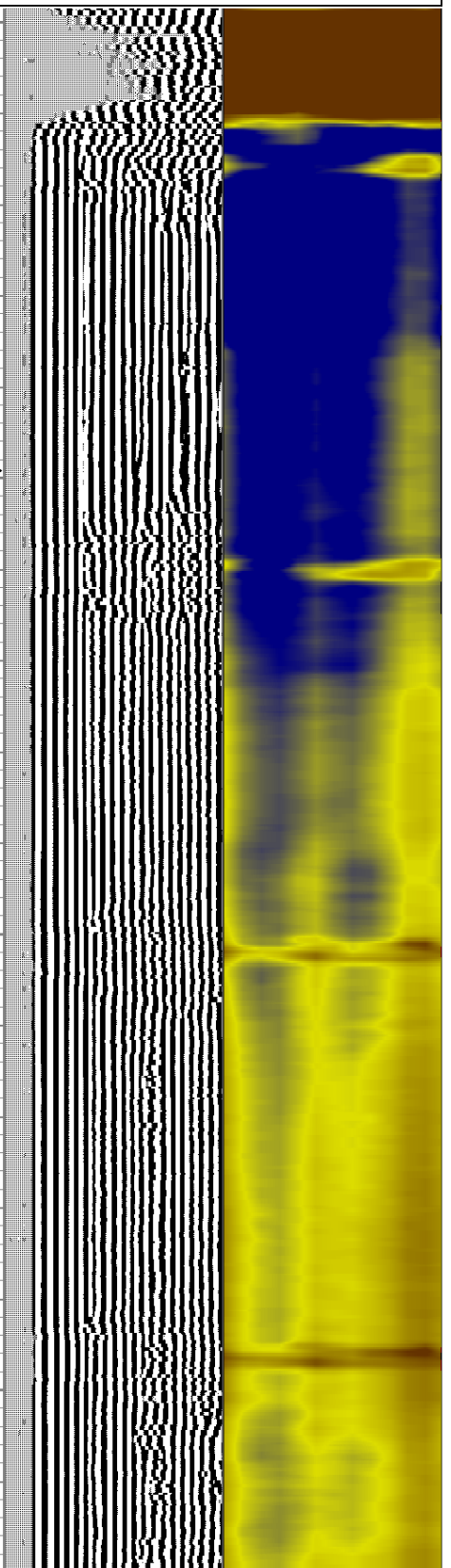
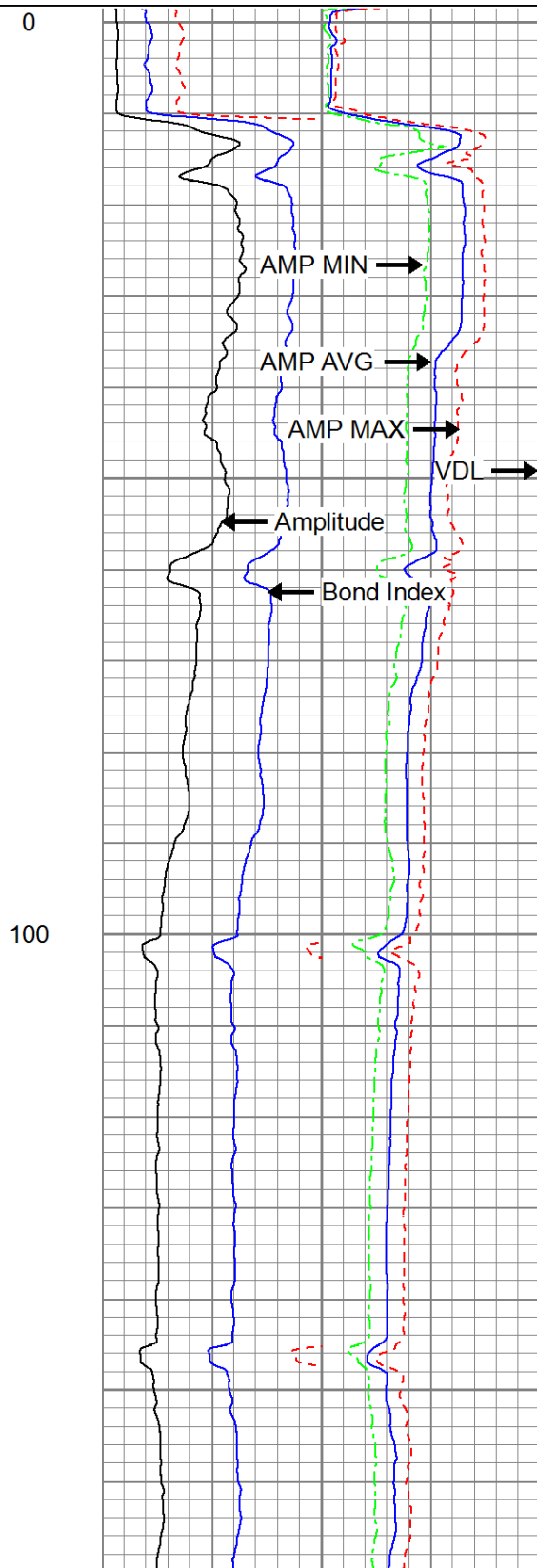
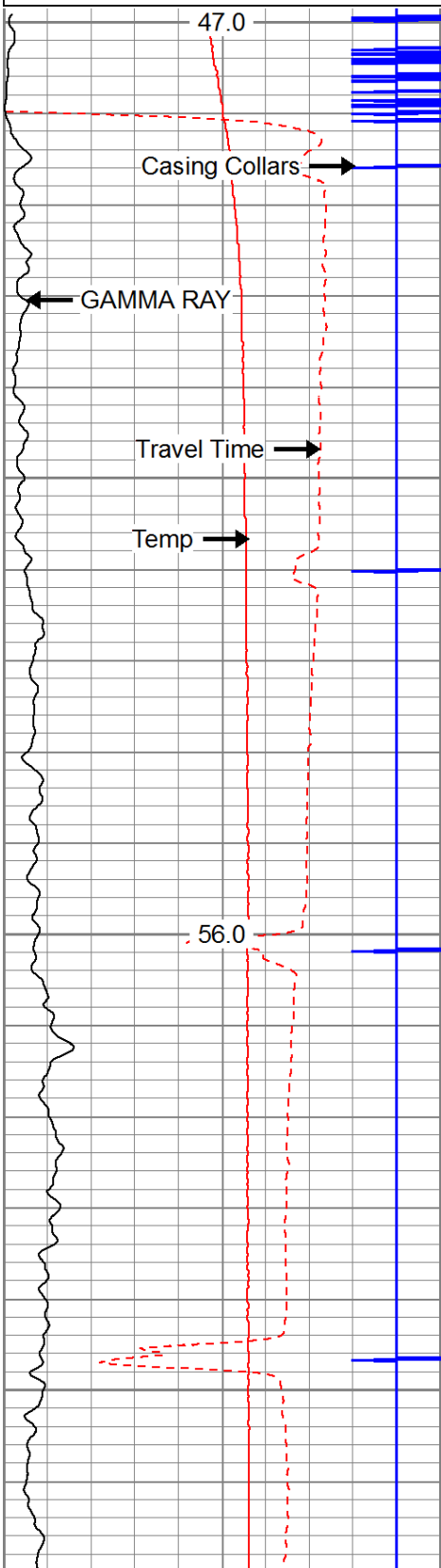
280	Travel Time (usec)	180
9	Casing Collars	-1
0	Gamma Ray	180
0	TEMP (degF)	100

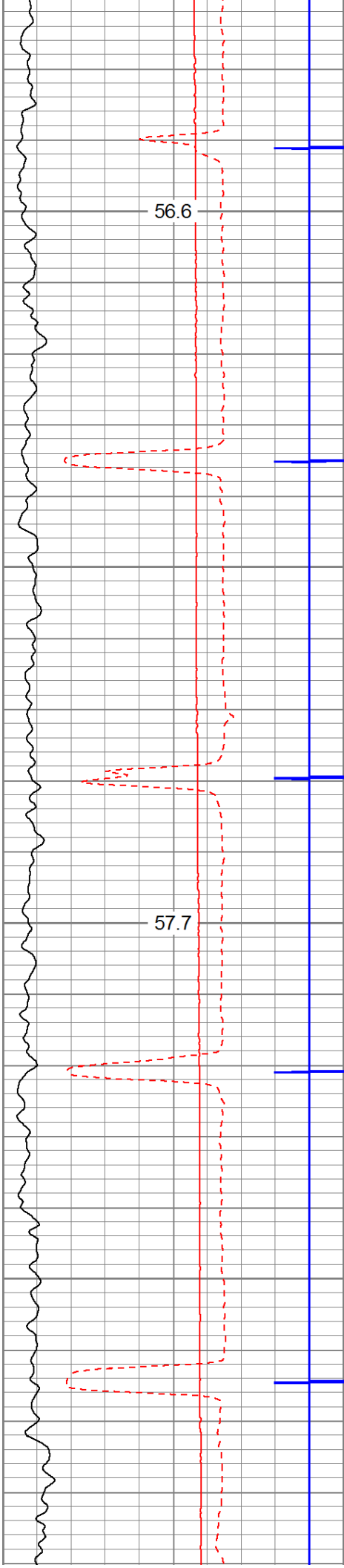
Amplitude	0	Amp Avg	150
(mV)	100	Amp Max	150
AmpX5 (mV)	20	Amp Min	150
BONDIX	0		

200	VDL	1200	1	Sector Map	12
			20		80



TEMP (degF)





200

300

