



**RADIAL CEMENT BOND  
GAMMA RAY/CCL/VDL**

Company ANTERO RESOURCES CORPORATION  
 Well ORVIS UNIT 2H  
 Field MARCELLUS  
 County TYLER  
 State W.V.

Company ANTERO RESOURCES CORPORATION  
 Well ORVIS UNIT 2H  
 Field MARCELLUS  
 County TYLER State W.V.

Location: API #: 47095025320000 Other Services

SEC	TWP	RGE	Elevation	N/A	Elevation
Permanent Datum	G.L.		K.B. N/A		
Log Measured From	K.B.		D.F. N/A		
Drilling Measured From	K.B. OF 25'		G.L. N/A		

Date	3/31/19
Run Number	ONE
Depth Driller	17092'
Depth Logger	6923'
Bottom Logged Interval	6923'
Top Log Interval	SURFACE
Open Hole Size	N/A
Type Fluid	H2O
Density / Viscosity	N/A
Max. Recorded Temp.	141 DEG
Estimated Cement Top	110'
Time Well Ready	N/A
Time Logger on Bottom	14.40
Equipment Number	340
Location	BRIDGEPORT, WV
Recorded By	JBOGGS
Witnessed By	MR. BOB REED

Borehole Record				Casing Record			
Run Number	Bit	From	To	Size	Weight	From	To
				20"	94LB	SURFACE	120'
				13 3/8"	54.5LB	SURFACE	394'
				9 5/8"	36LB	SURFACE	2721'
				5 1/2"	23LB	SURFACE	17092'

<<< Fold Here >>>

All interpretations are opinions based on inferences from electrical or other measurements and we cannot and do not guarantee the accuracy or correctness of any interpretation, and we shall not, except in the case of gross or willful negligence on our part, be liable or responsible for any loss, costs, damages, or expenses incurred or sustained by anyone resulting from any interpretation made by any of our officers, agents or employees. These interpretations are also subject to our general terms and conditions set out in our current Price Schedule.

**Comments**

THANK YOU FOR USING KLX ENERGY SERVICES  
 LOG WAS RAN ON 5 1/2" CASING WITH 1500PSI ON CASING  
 TOP OF CEMENT- 110'  
 BOTTOM HOLE TEMP- 141 DEG  
 MARKER JOINT ON LOG @ 5666'-5676'  
 CORRECTED UP HOLE 12' TO PUT MARKER ON DEPTH WITH PIPE TALLY

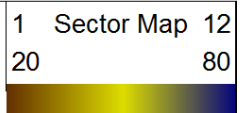


**Main Log @ 1500 PSI**

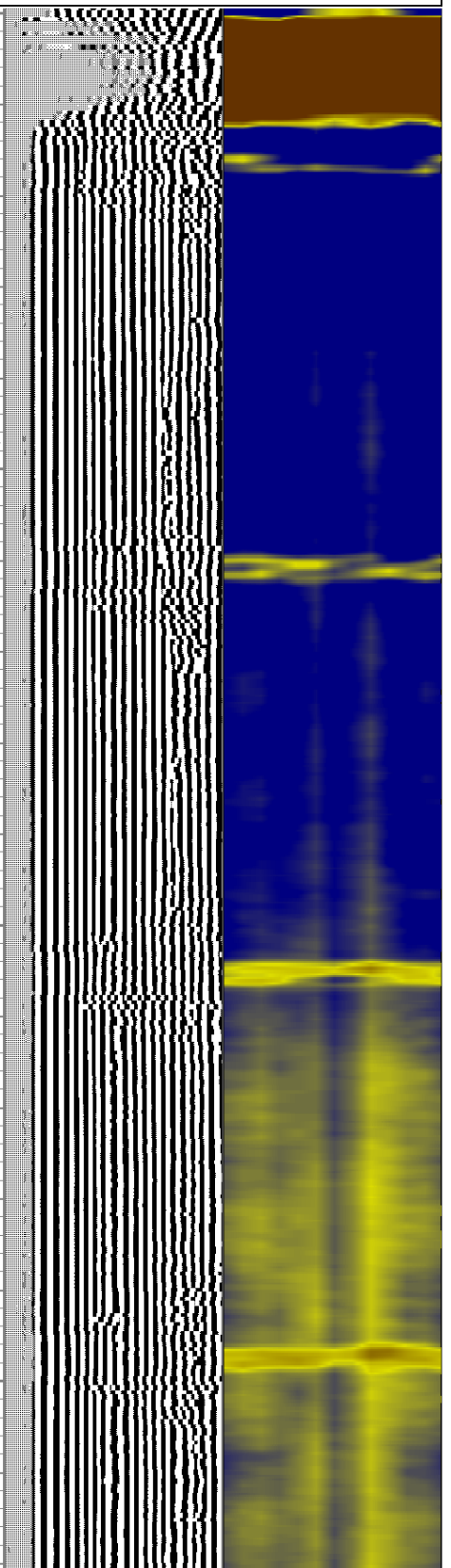
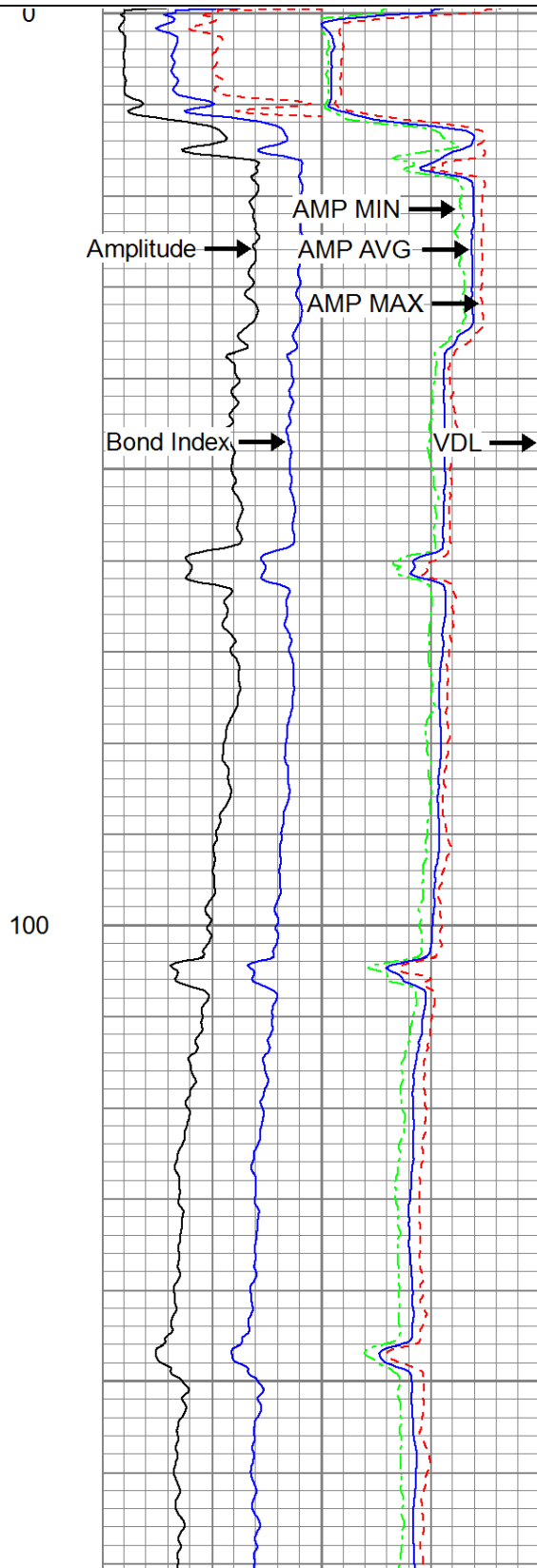
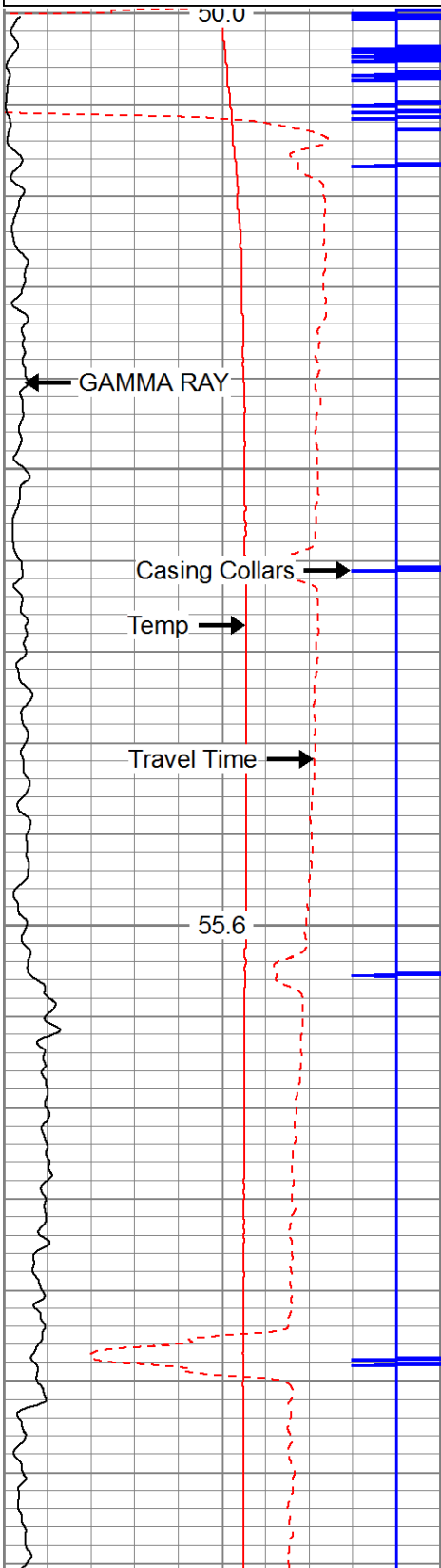
Database File: c:\warrior\data\2019 antero\antero-orvis unit 2h.db  
 Dataset Pathname: pass3.1  
 Presentation Format: antero f  
 Dataset Creation: Mon Apr 01 08:08:00 2019 by Calc Std Casedhole 10081  
 Charted by: Depth in Feet scaled 1:240

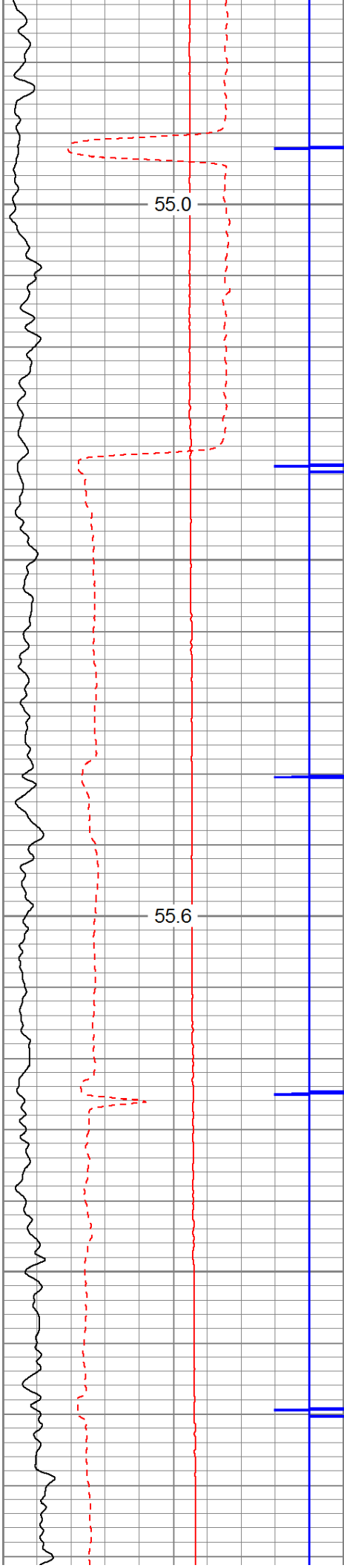
280	Travel Time (usec)	180
9	Casing Collars	-1
0	Gamma Ray	180
0	TEMP (degF)	100

Amplitude	0	Amp Avg	150	200	VDL	1200
0 (mV)	100	0	Amp Max	150		
0 AmpX5 (mV)	20	0	Amp Min	150		
1 BONDIX	0					



TEMP (degF)





200

300

