



**RADIAL CEMENT BOND  
GAMMA RAY/CCL/VDL**

Company ANTERO RESOURCES CORPORATION  
 Well REMINGTON UNIT 2H  
 Field MARCELLUS  
 County TYLER  
 State W.V.

Company ANTERO RESOURCES CORPORATION  
 Well REMINGTON UNIT 2H  
 Field MARCELLUS  
 County TYLER State W.V.

Location: API #: 47095025350000

Other Services

SEC	TWP	RGE	Elevation	N/A	Elevation
Permanent Datum	G.L.		K.B.	N/A	
Log Measured From	K.B.		D.F.	N/A	
Drilling Measured From	K.B. OF 25'		G.L.	N/A	

Date	3/30/19
Run Number	ONE
Depth Driller	16432'
Depth Logger	6310'
Bottom Logged Interval	6310'
Top Log Interval	SURFACE
Open Hole Size	N/A
Type Fluid	H2O
Density / Viscosity	N/A
Max. Recorded Temp.	140 DEG
Estimated Cement Top	190'
Time Well Ready	N/A
Time Logger on Bottom	15.15
Equipment Number	340
Location	BRIDGEPORT, WV
Recorded By	JBOGGS
Witnessed By	MR. BOB REED

Borehole Record			Casing Record				
Run Number	Bit	From	To	Size	Weight	From	To
				20"	94LB	SURFACE	95'
				13 3/8"	54.5LB	SURFACE	362'
				9 5/8"	36LB	SURFACE	2561'
				5 1/2"	23LB	SURFACE	16432'

<<< Fold Here >>>

All interpretations are opinions based on inferences from electrical or other measurements and we cannot and do not guarantee the accuracy or correctness of any interpretation, and we shall not, except in the case of gross or willful negligence on our part, be liable or responsible for any loss, costs, damages, or expenses incurred or sustained by anyone resulting from any interpretation made by any of our officers, agents or employees. These interpretations are also subject to our general terms and conditions set out in our current Price Schedule.

**Comments**

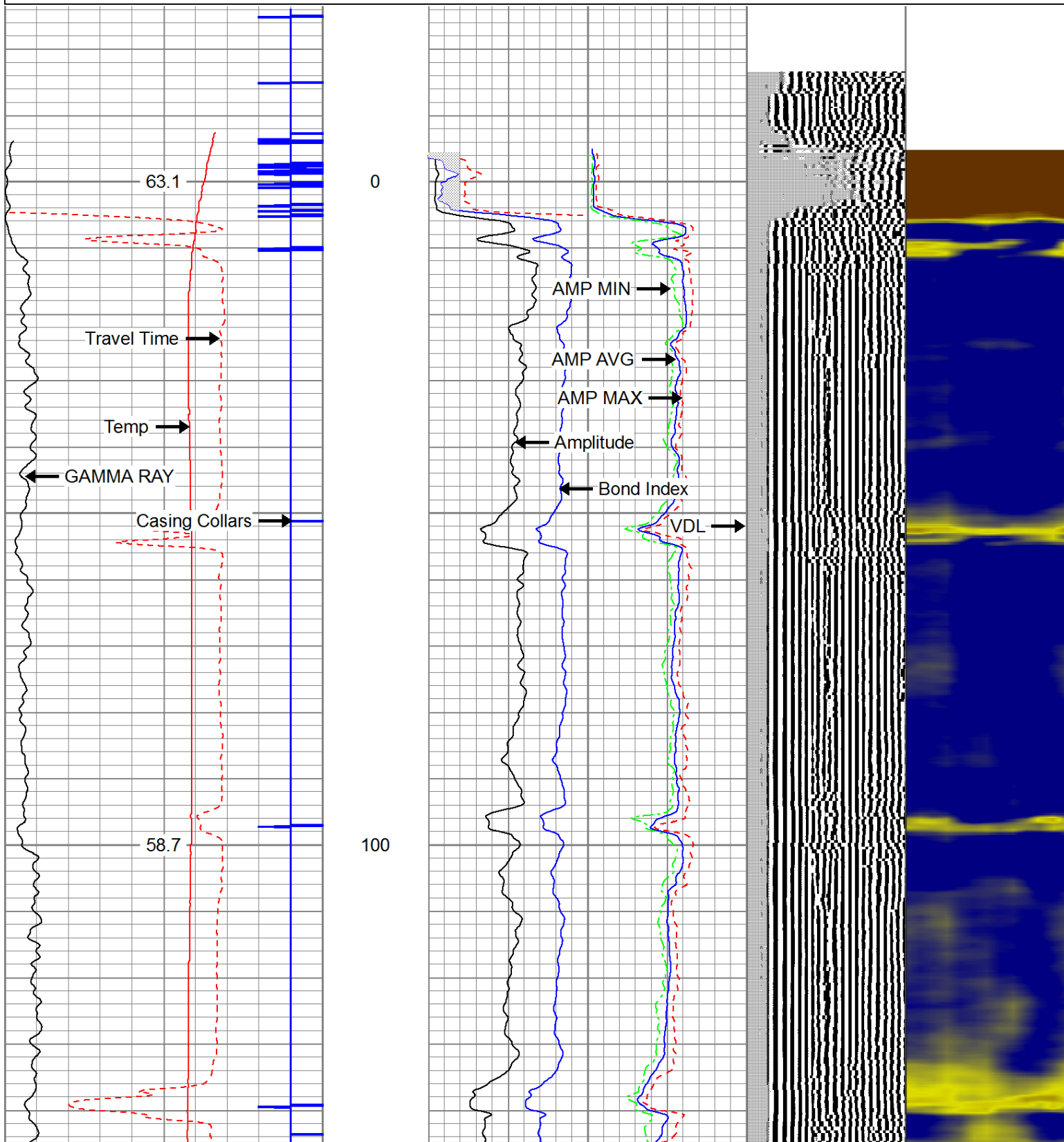
THANK YOU FOR USING KLX ENERGY SERVICES  
 LOG WAS RAN ON 5 1/2" CASING WITH 1500PSI ON CASING  
 TOP OF CEMENT- 190'  
 BOTTOM HOLE TEMP- 140 DEG  
 MARKER JOINT ON LOG @ 4592'-4602'  
 CORRECTED UP HOLE 20' TO PUT MARKER ON DEPTH WITH PIPE TALLY

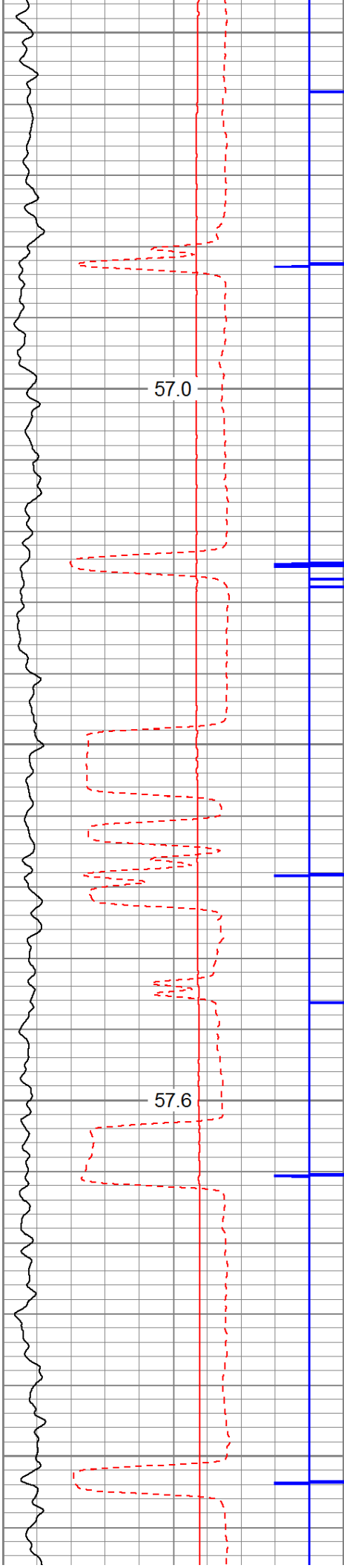


**Main Pass @ 1500 PSI**

Database File: c:\warrior\data\2019 antero\antero-remington unit 2h.db  
 Dataset Pathname: pass3.4  
 Presentation Format: antero f  
 Dataset Creation: Mon Apr 01 08:23:12 2019 by Calc Std Casedhole 10081  
 Charted by: Depth in Feet scaled 1:240

280	Travel Time (usec)	180	Amplitude	0	Amp Avg	150	200	VDL	1200	1	Sector Map	12
9	Casing Collars	-1	0	(mV)	100	0	Amp Max	150		20		80
0	Gamma Ray	180	0	AmpX5 (mV)	20	0	Amp Min	150				
0	TEMP (degF)	100	1	BONDIX	0							





200

300

