



**Segmented Radial Cement Bond
W/Gamma Ray, CCL
Log**

Company	Antero Resources Corporation	Country	US
Well	Dierkes Unit 1H	Company	Antero Resources Corporation
Field	Marcellus	Well	Dierkes Unit 1H
County	Tyler	Field	Marcellus
State	WV	County	Tyler
		State	WV
		Country	US
Location:	API #: 47095025500000		Other Services
SEC	TWP	RGE	Elevation
Permanent Datum	Ground Level	Elevation	K.B.
Log Measured From	R.K.B. 25'		D.F.
Drilling Measured From	R.K.B.		G.L.

Date	12-NOV-2019		
Run Number	ONE		
Depth Driller	14490'		
Depth Logger	6600'		
Bottom Logged Interval	6600'		
Top Log Interval	Surface		
Open Hole Size	8.25"		
Type Fluid	FW		
Density / Viscosity	8.6		
Max. Recorded Temp.	133 degF		
Estimated Cement Top	2560'		
Time Well Ready	N/A		
Time Logger on Bottom	N/A		
Equipment Number	214182		
Location	Bridgeport, WV		
Recorded By	S. Butler		
Witnessed By	Jerrako Evans		

Run Number	Borehole Record		Tubing Record	
	Bit	From	To	Size
ONE	24"	Surface	80'	
TWO	17.5"	80'	451'	
THREE	12.25"	451'	2554'	
FOUR	8.25"	2554'	14490'	

Casing Record	Surface String	Size	Wgt/Ft	Top		Bottom	
				Surface	Surface	Surface	Surface
Production String	5.5"		20	Surface	Surface	14490'	
Prot. String	9.625"		40	Surface	Surface	2554'	
Surface String	13.375"		54.5	Surface	Surface	451'	

<<< Fold Here >>>

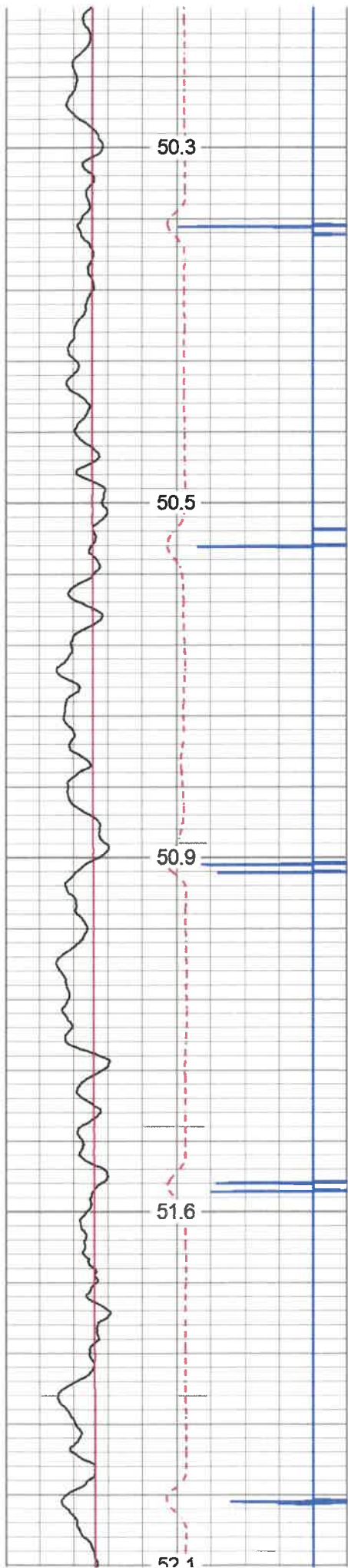
All interpretations are opinions based on inferences from electrical or other measurements and we cannot and do not guarantee the accuracy or correctness of any interpretation, and we shall not, except in the case of gross or willful negligence on our part, be liable or responsible for any loss, costs, damages, or expenses incurred or sustained by anyone resulting from any interpretation made by any of our officers, agents or employees. These interpretations are also subject to our general terms and conditions set out in our current Price Schedule.

Comments

Zero @ R.K.B. 25'
 Marker Joint 5480' - 5490'
 Log TD 6600'
 Cement Top @ 2560'
 Log Ran Under 1500 PSI



Main Pass



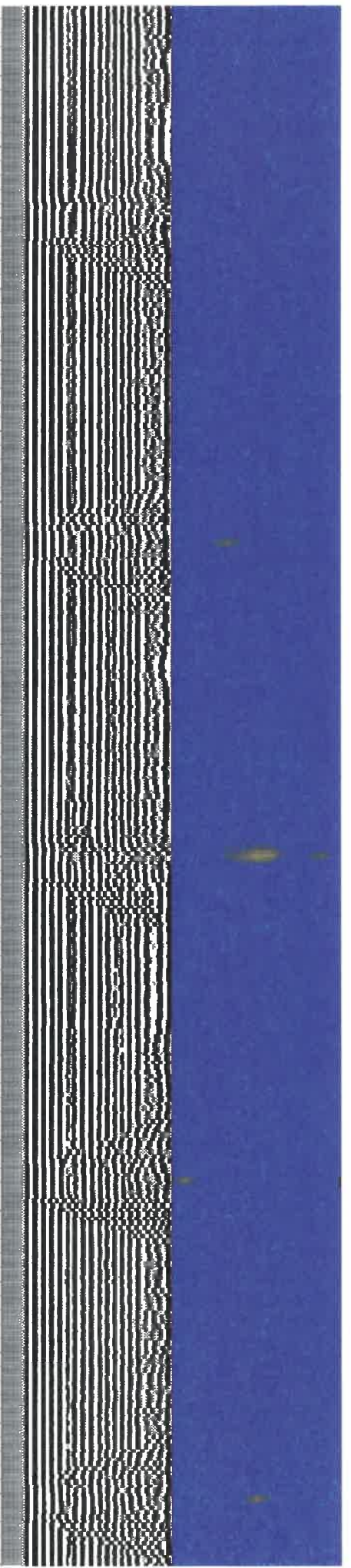
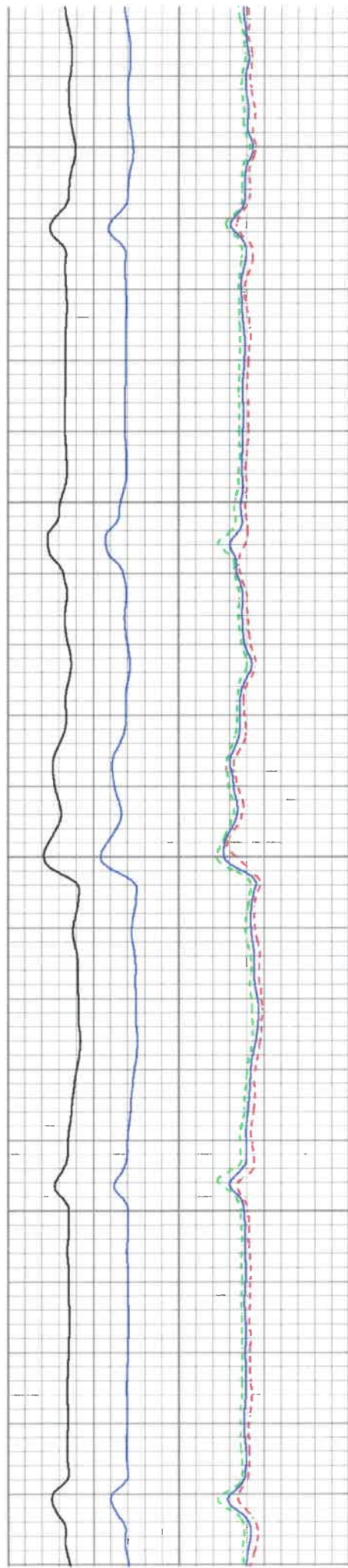
200

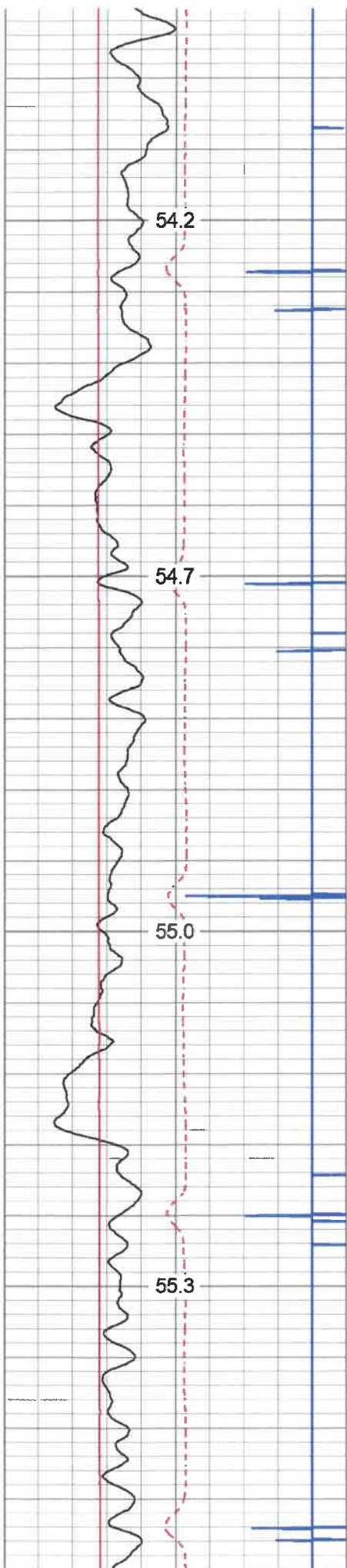
250

300

350

400



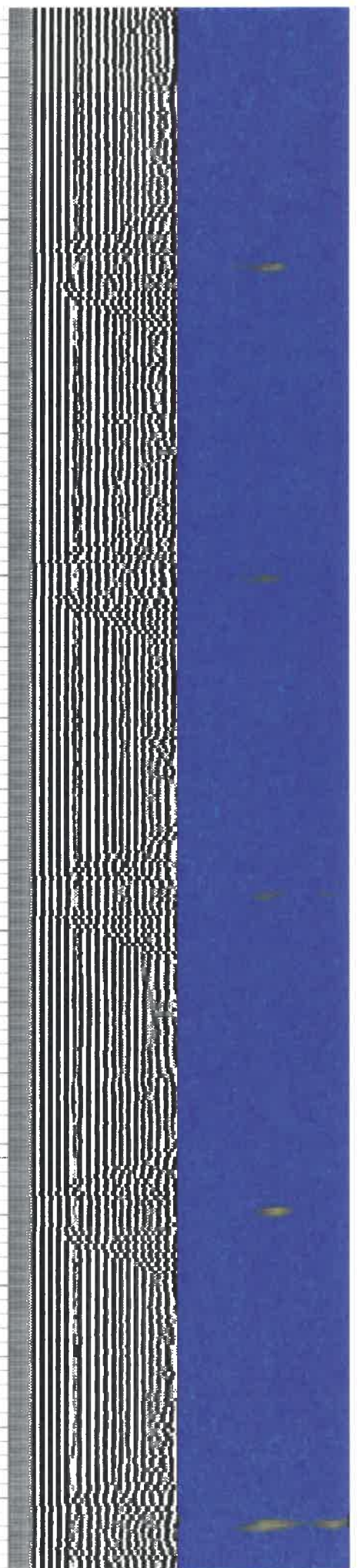
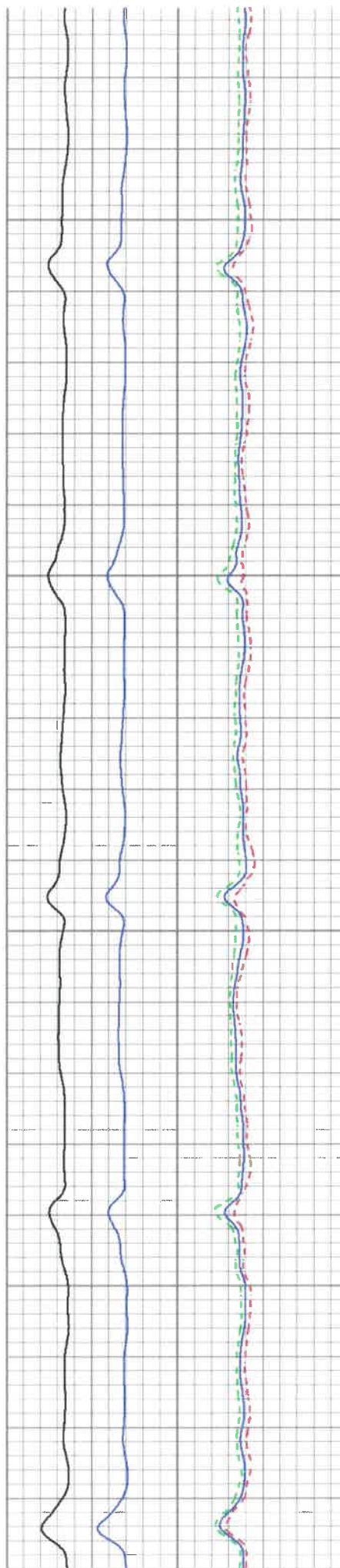


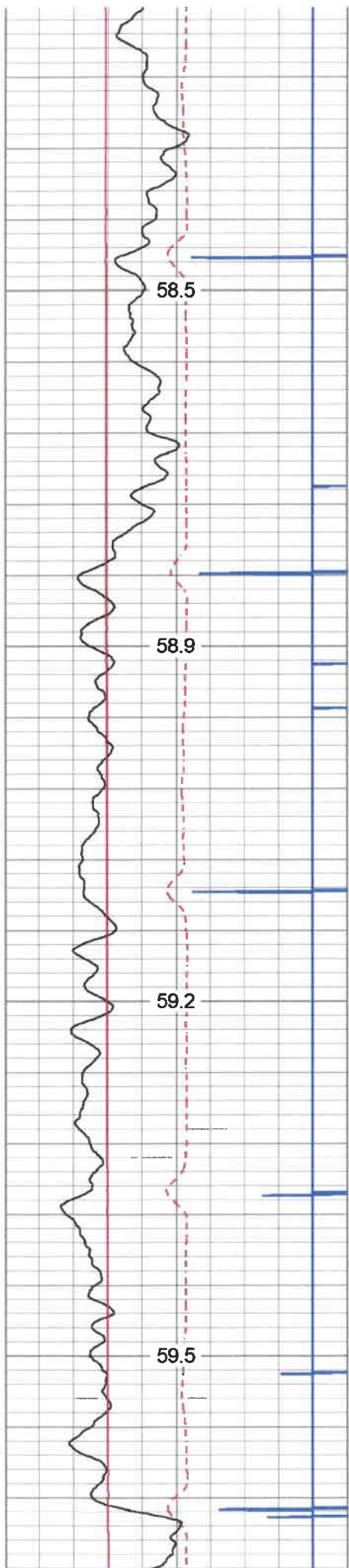
650

700

750

800



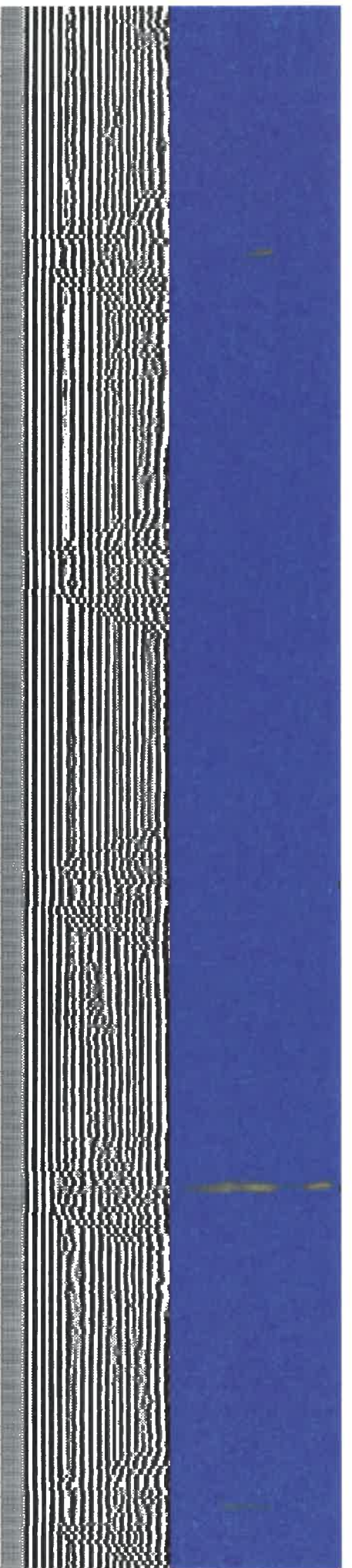
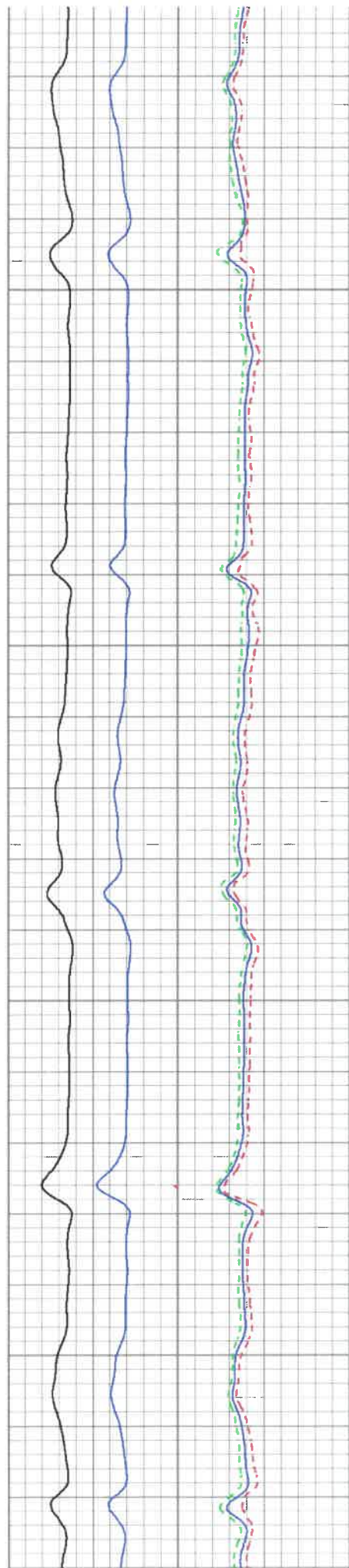


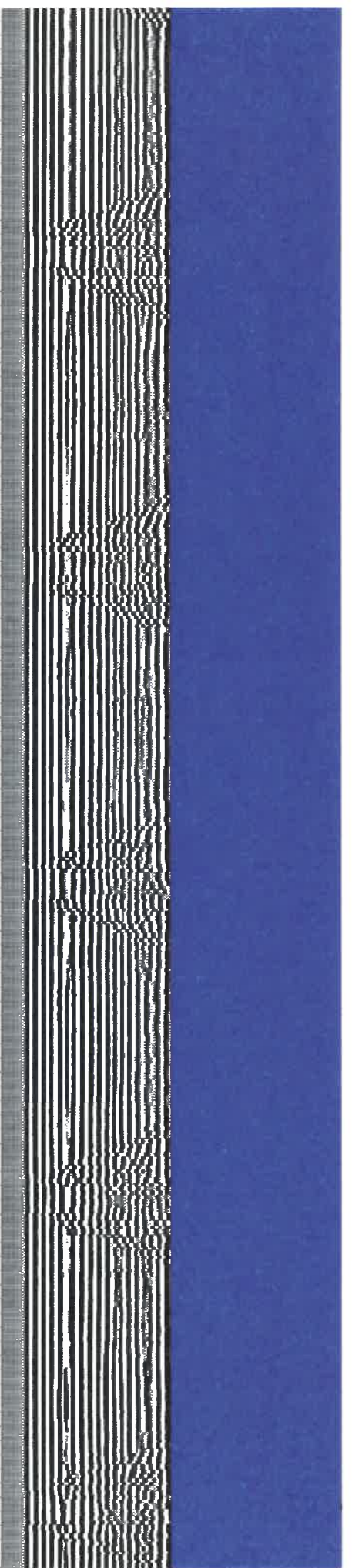
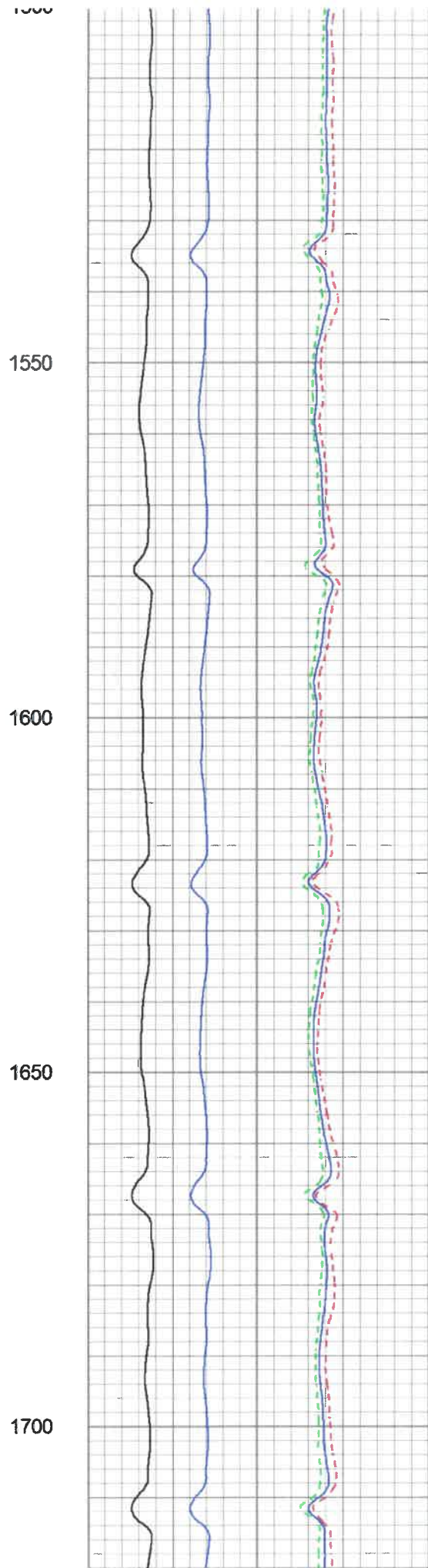
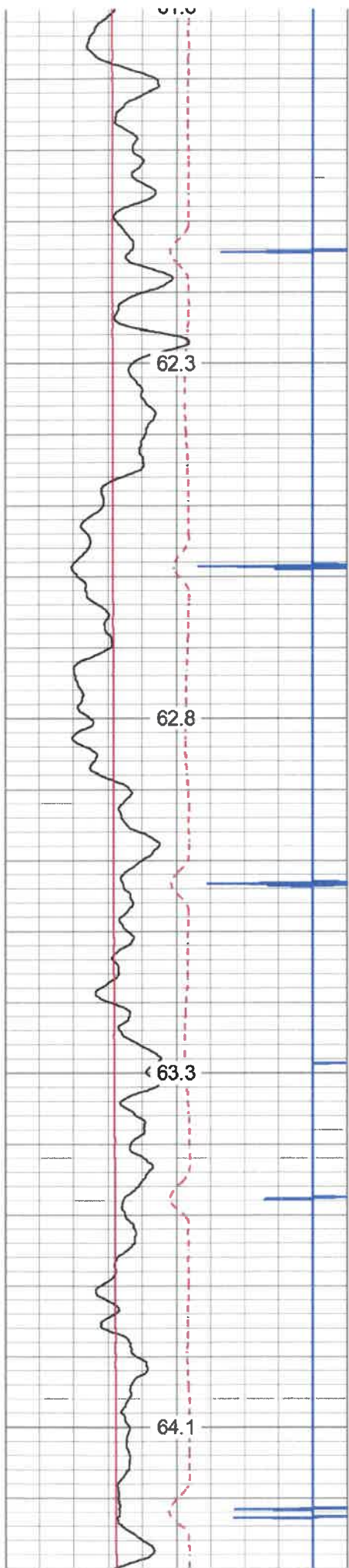
1100

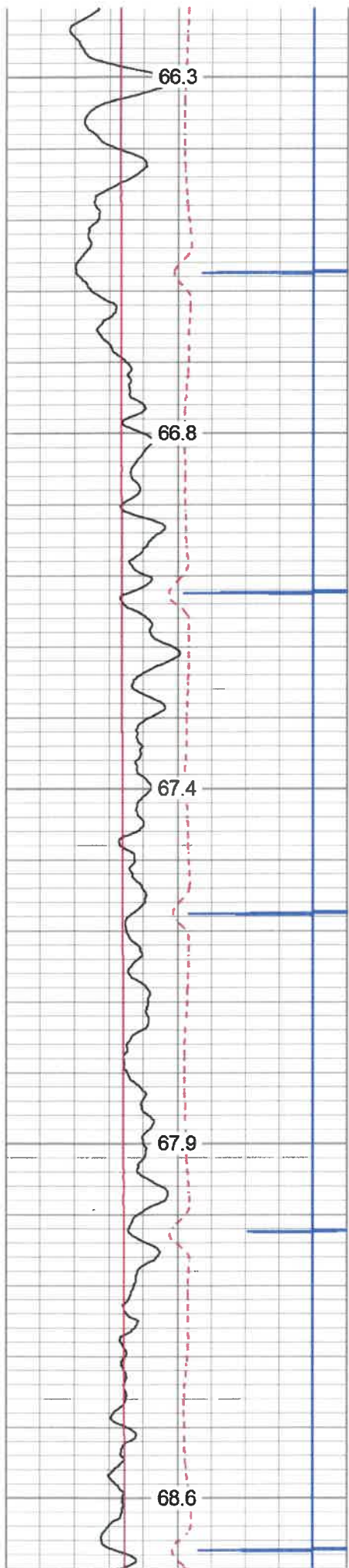
1150

1200

1250







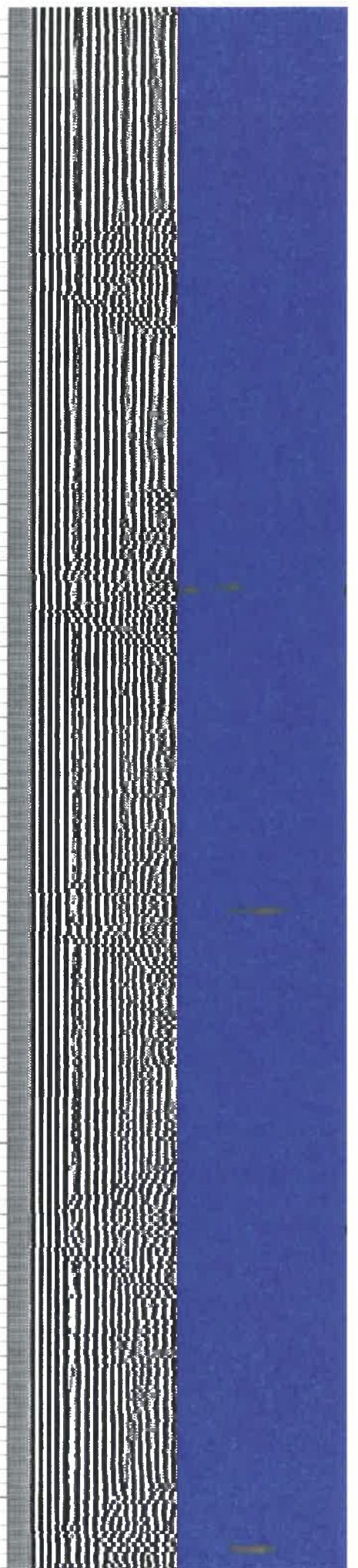
1950

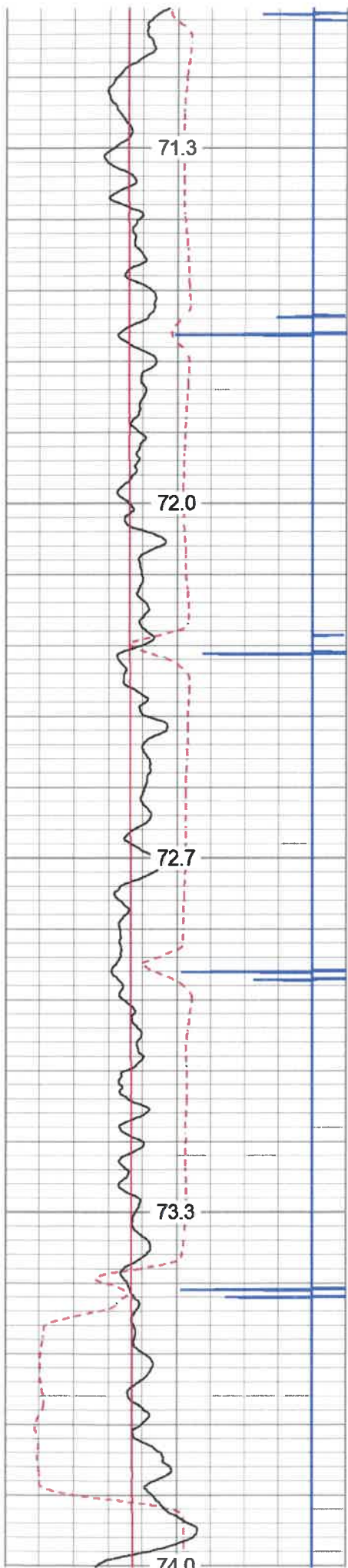
2000

2050

2100

2150





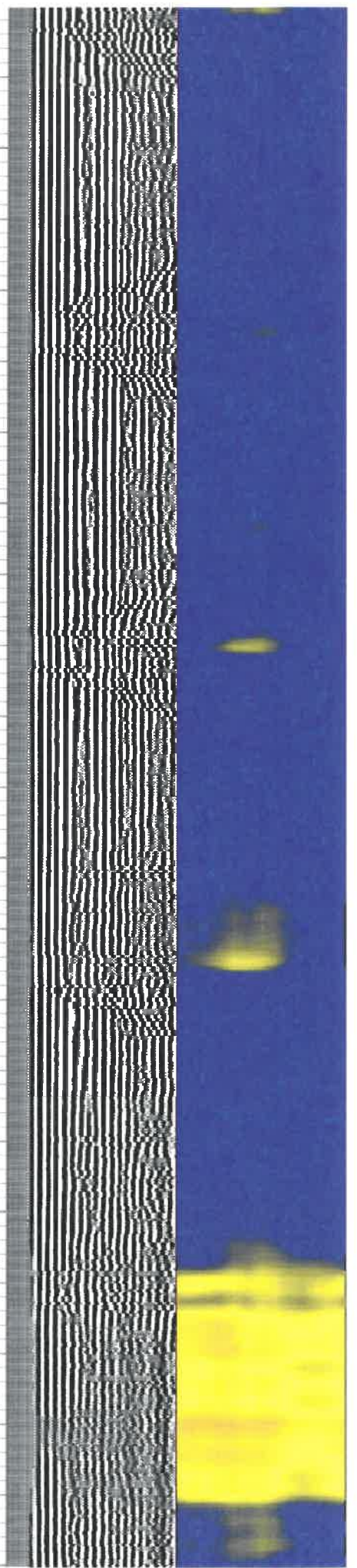
2400

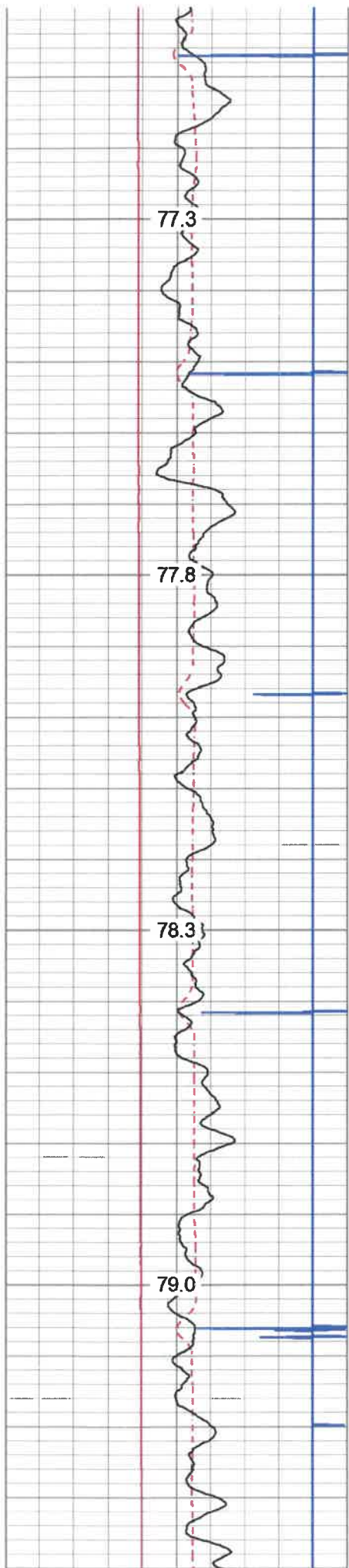
2450

2500

2550

2600



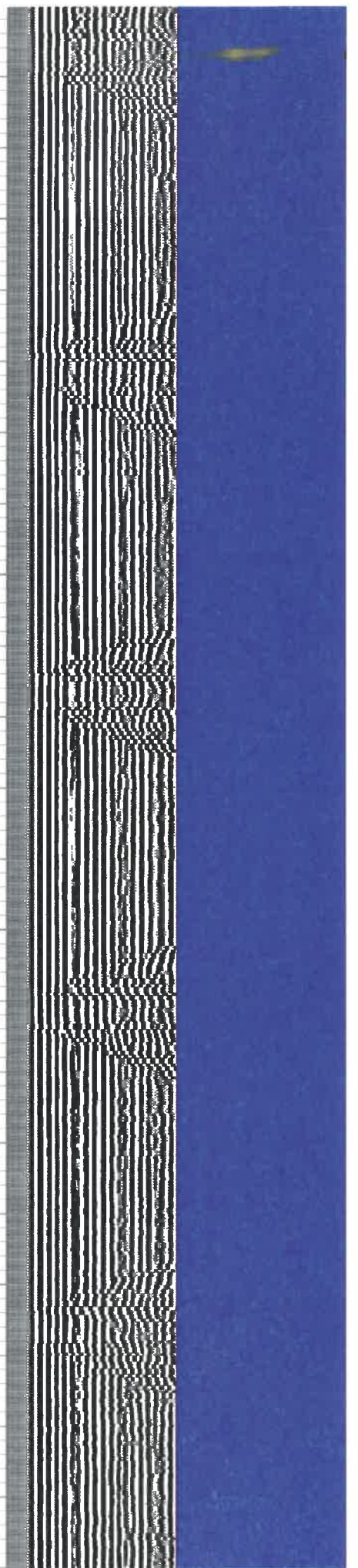
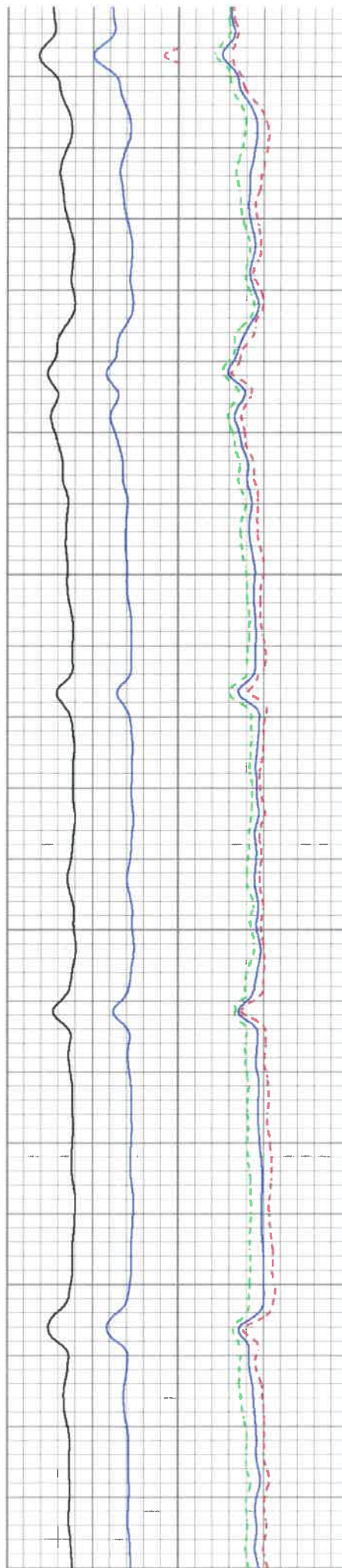


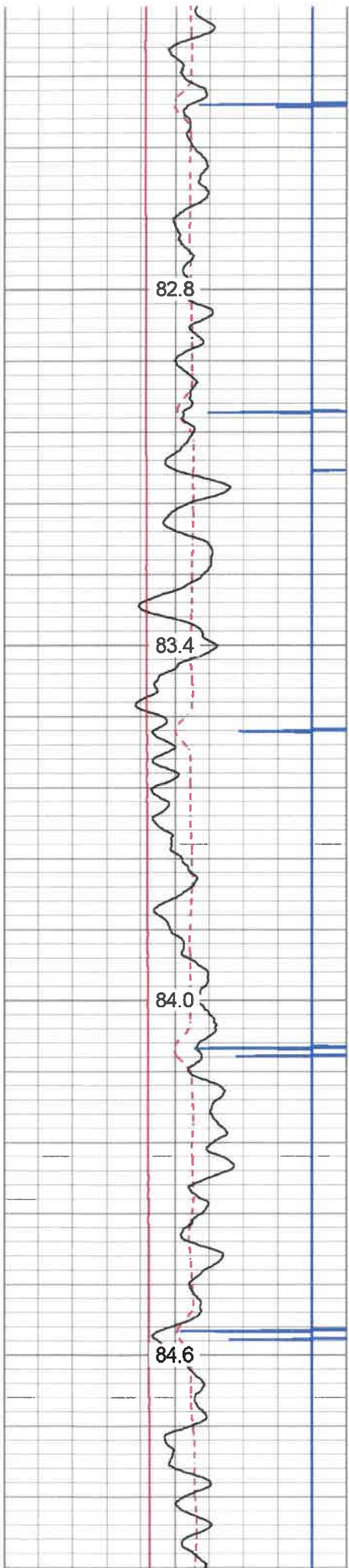
2850

2900

2950

3000



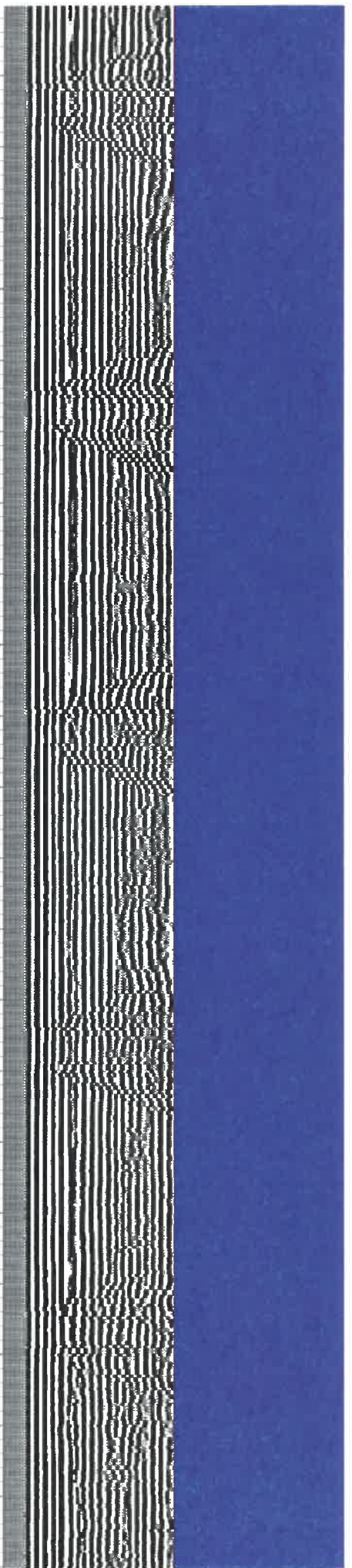
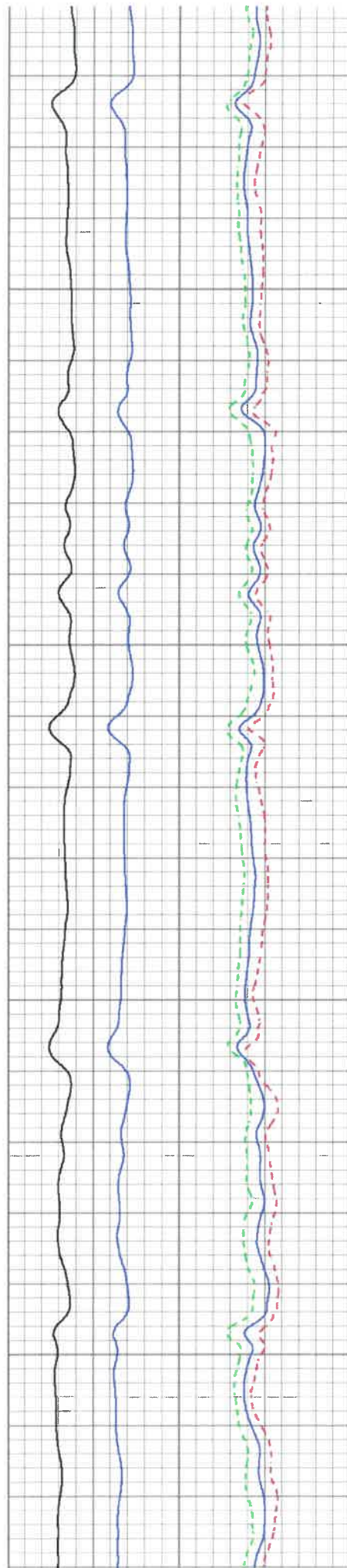


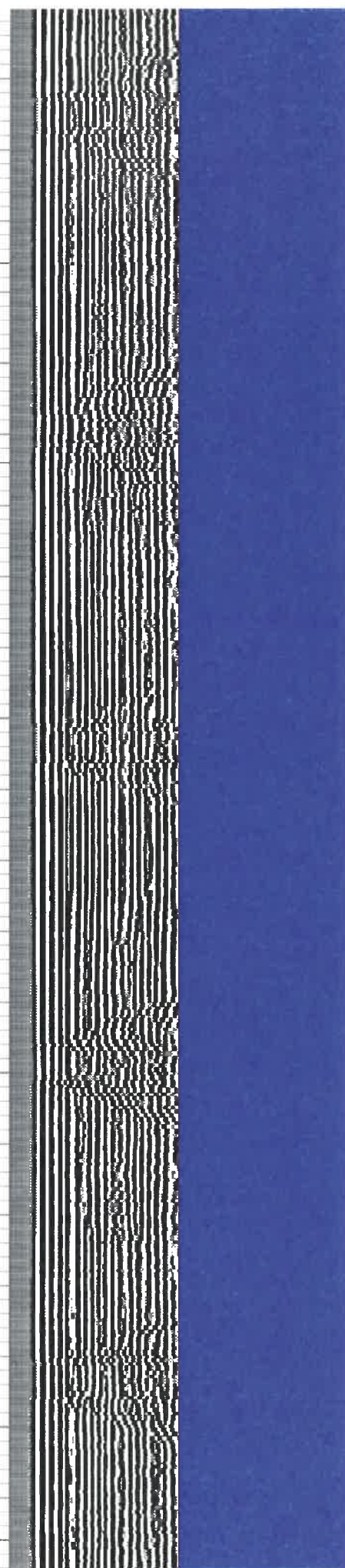
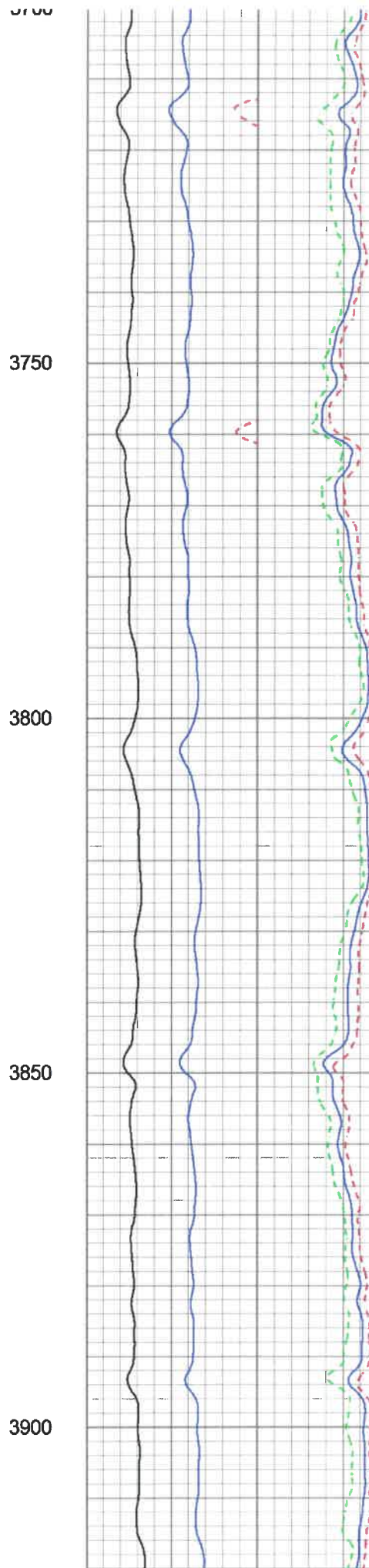
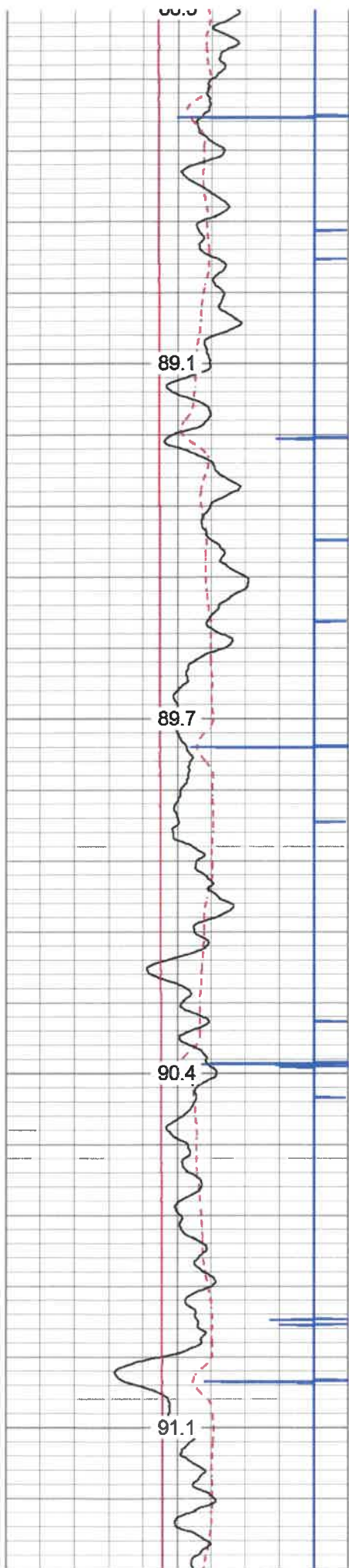
3300

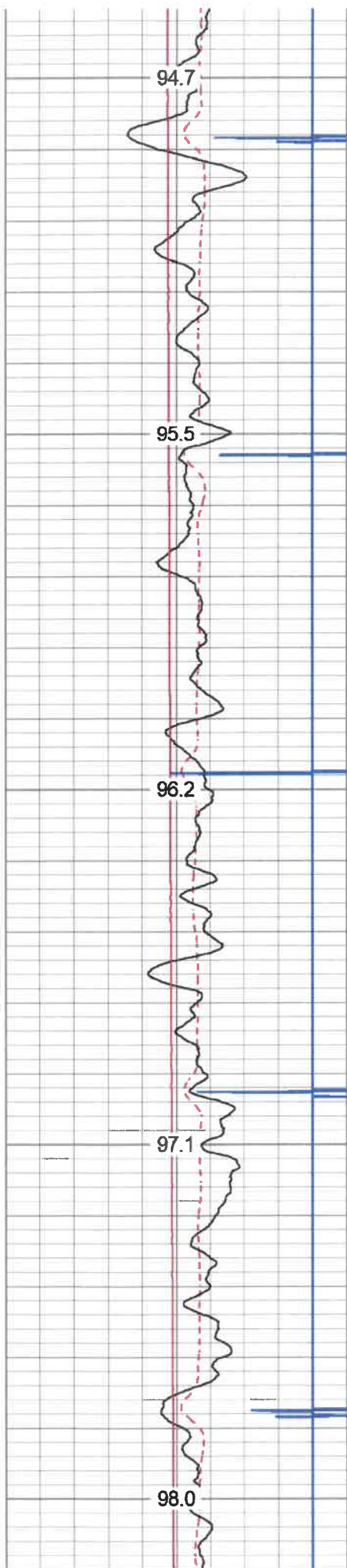
3350

3400

3450







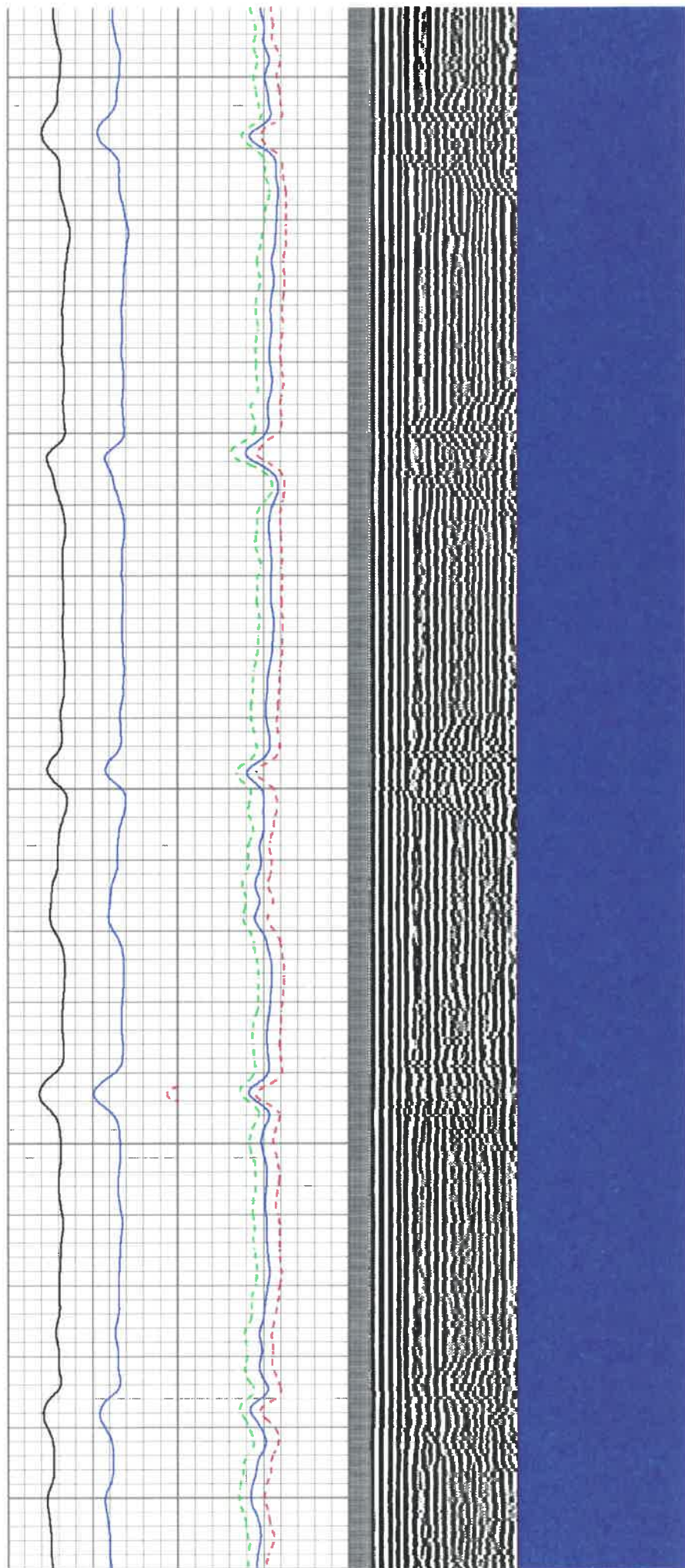
4150

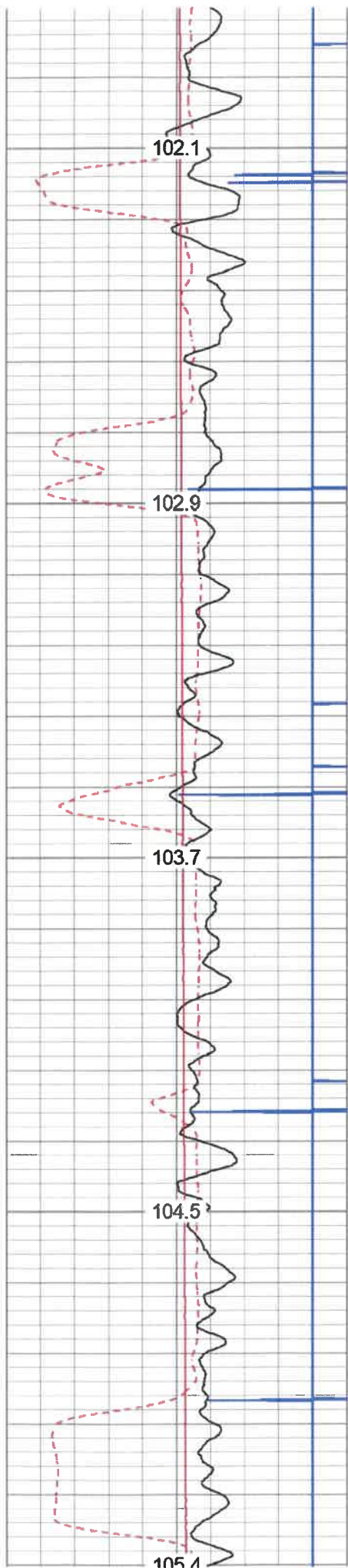
4200

4250

4300

4350





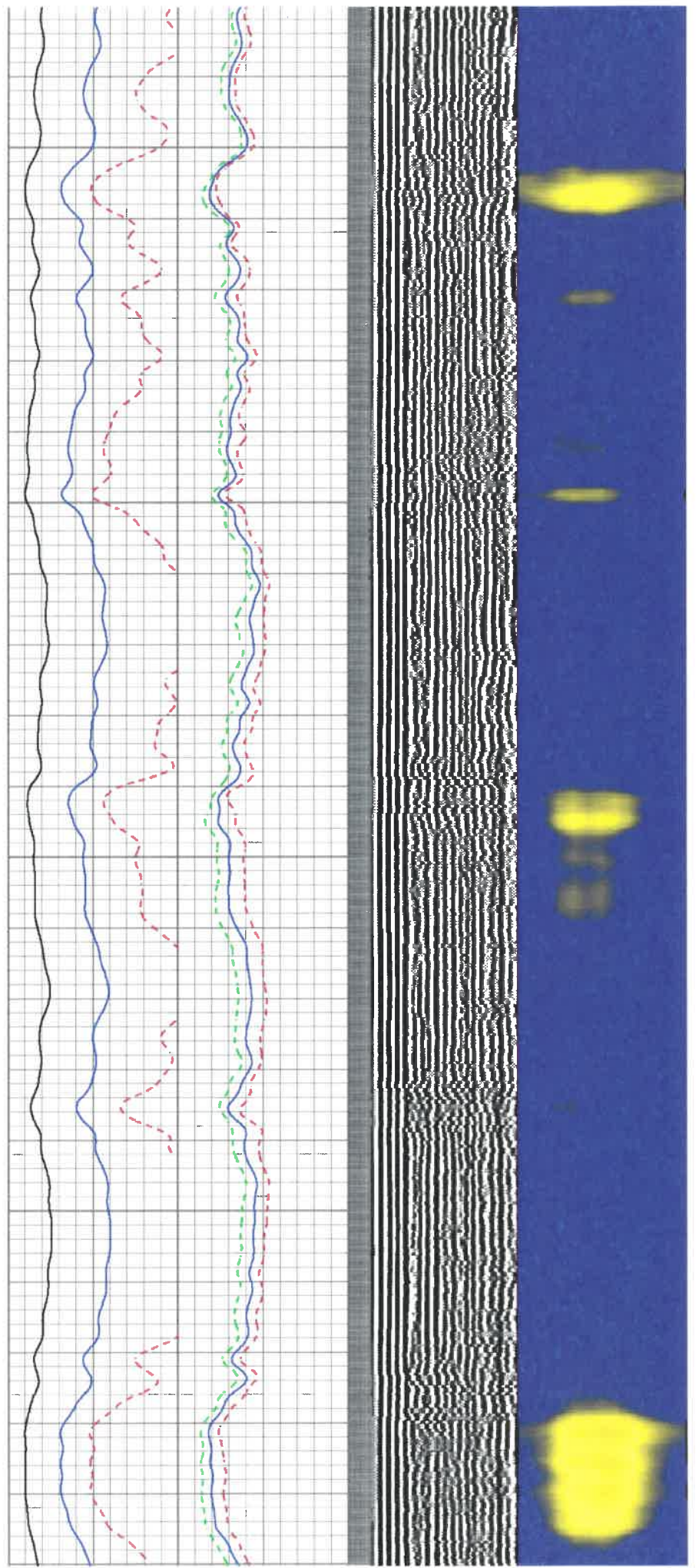
4600

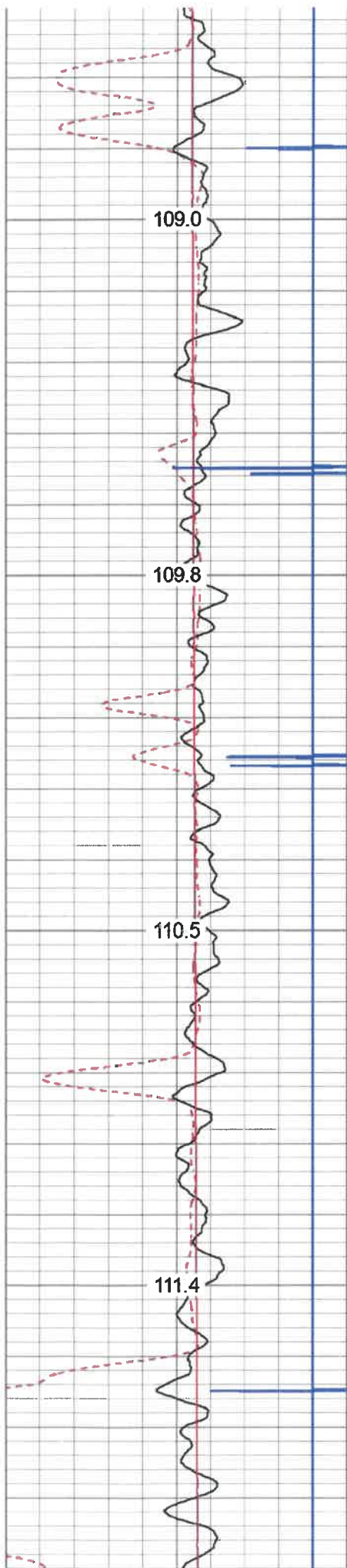
4650

4700

4750

4800



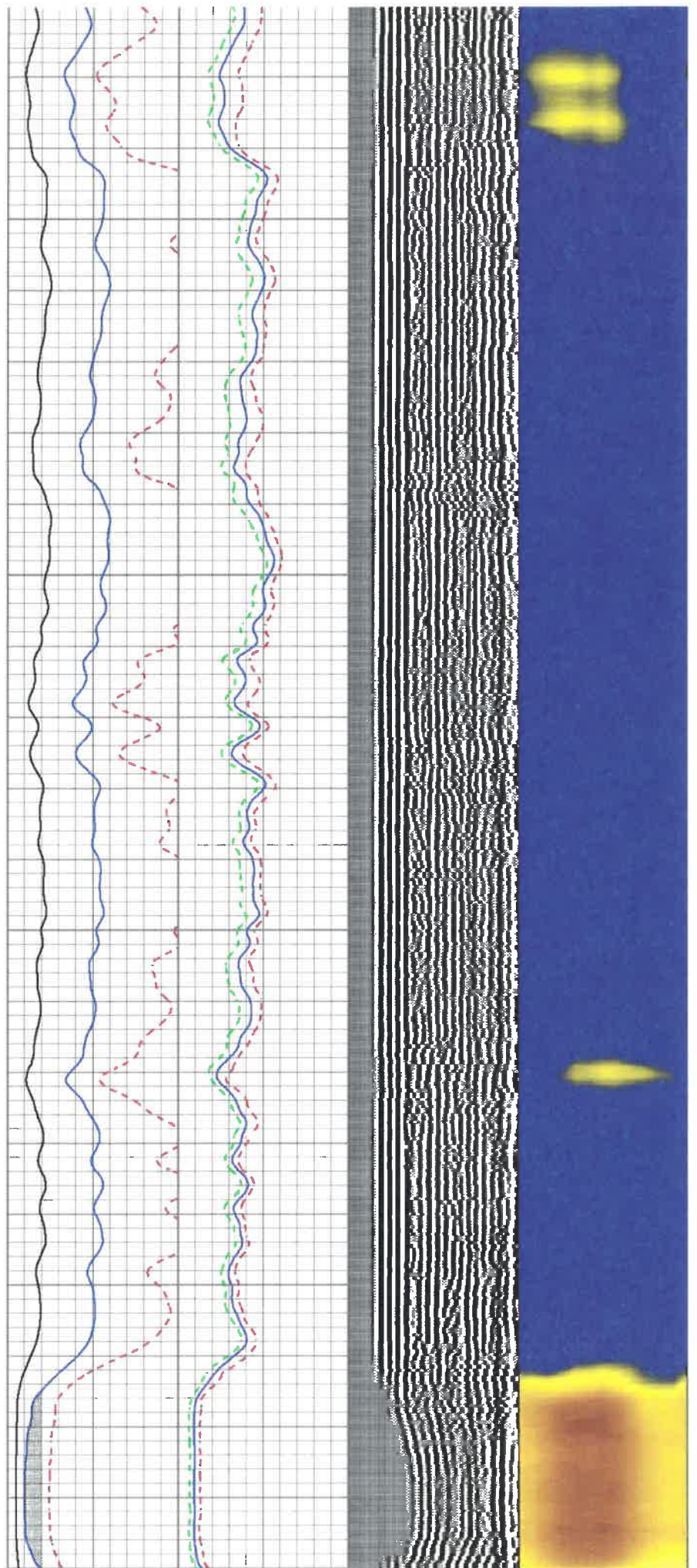


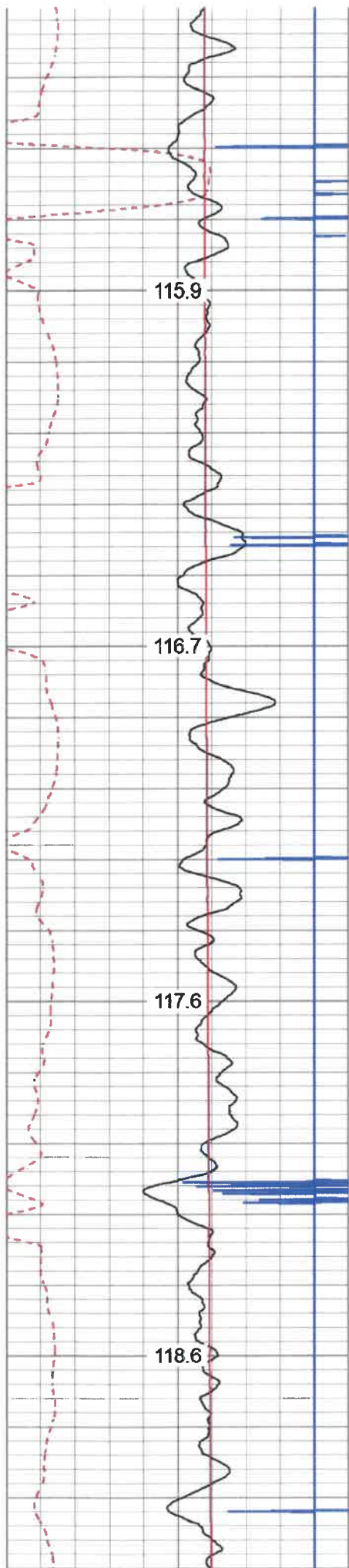
5050

5100

5150

5200



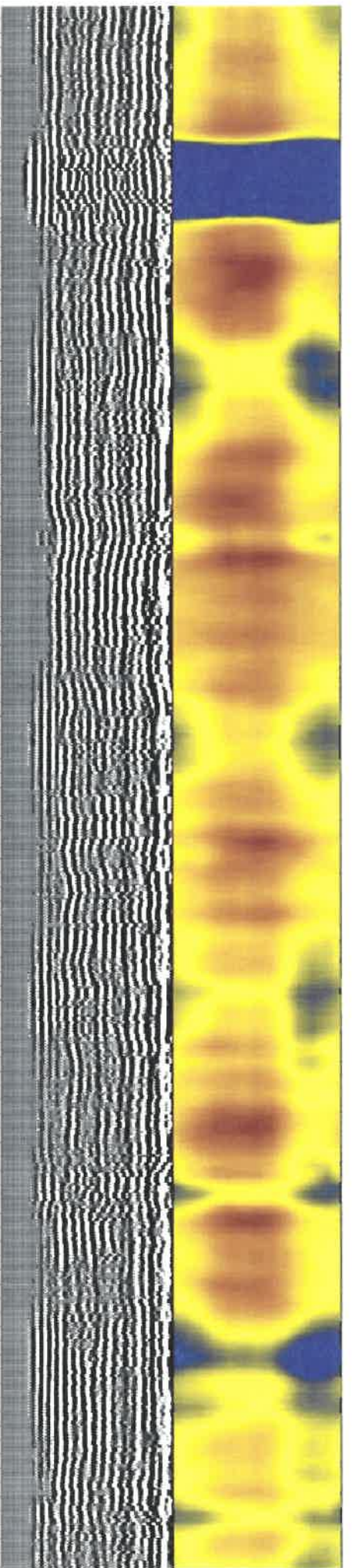
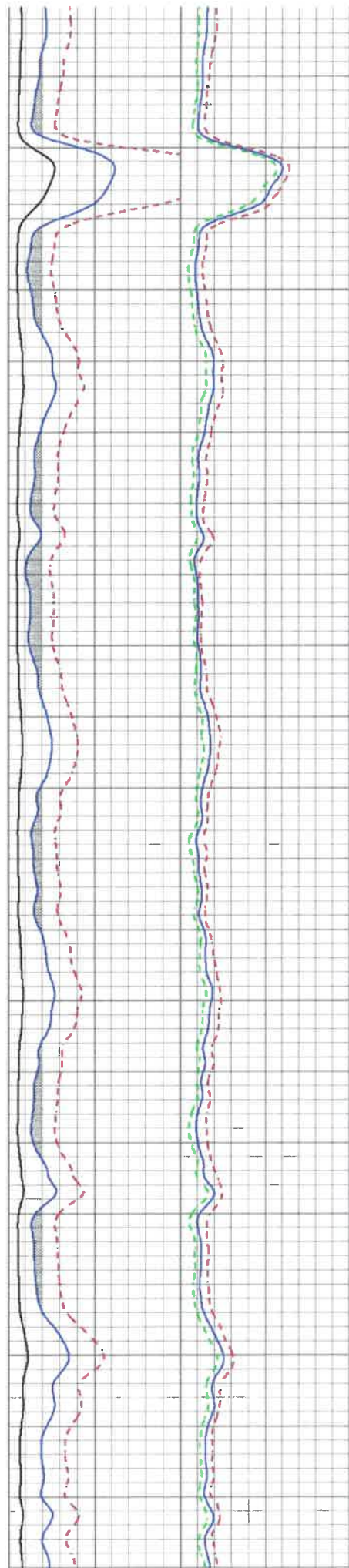


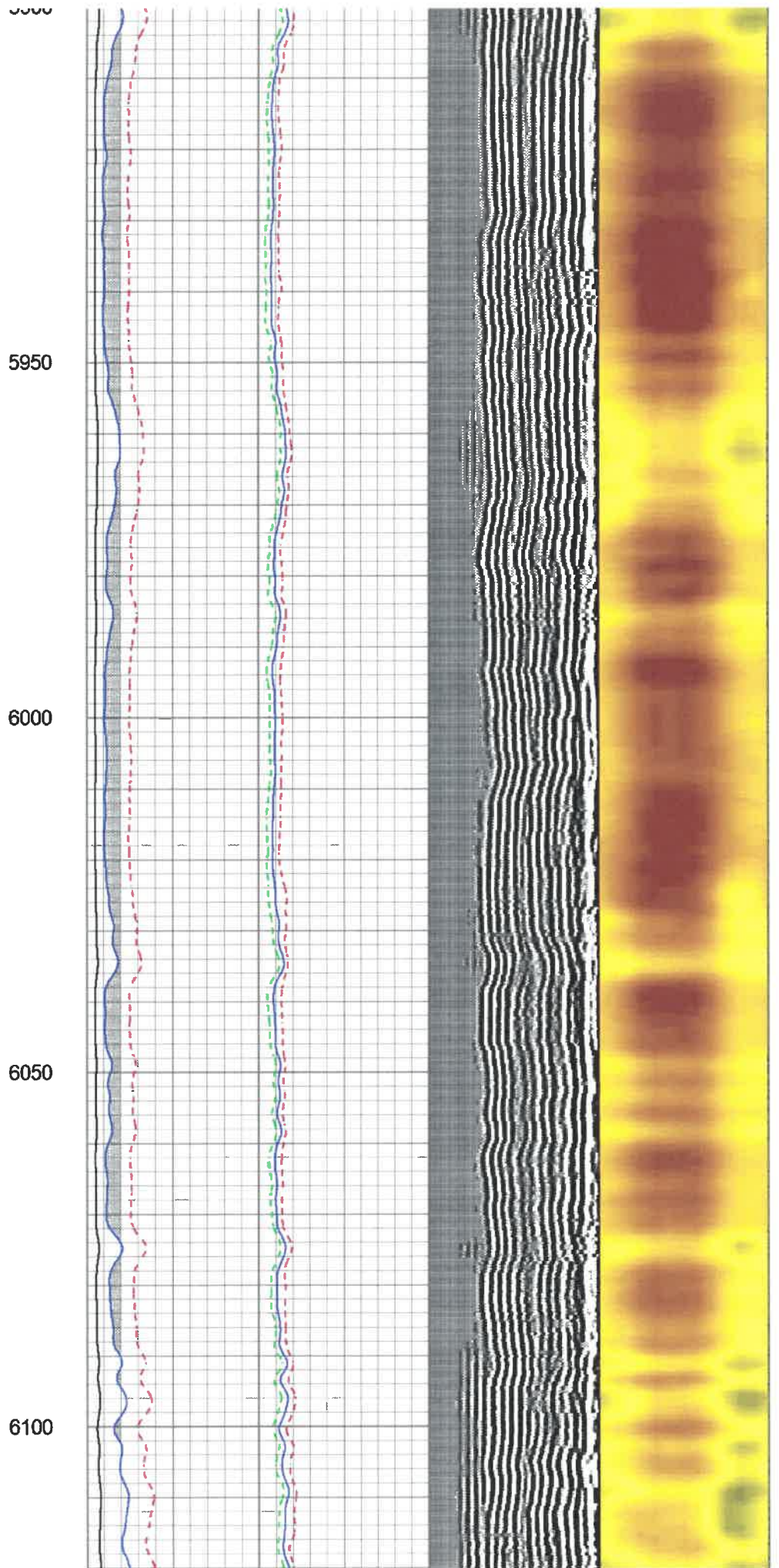
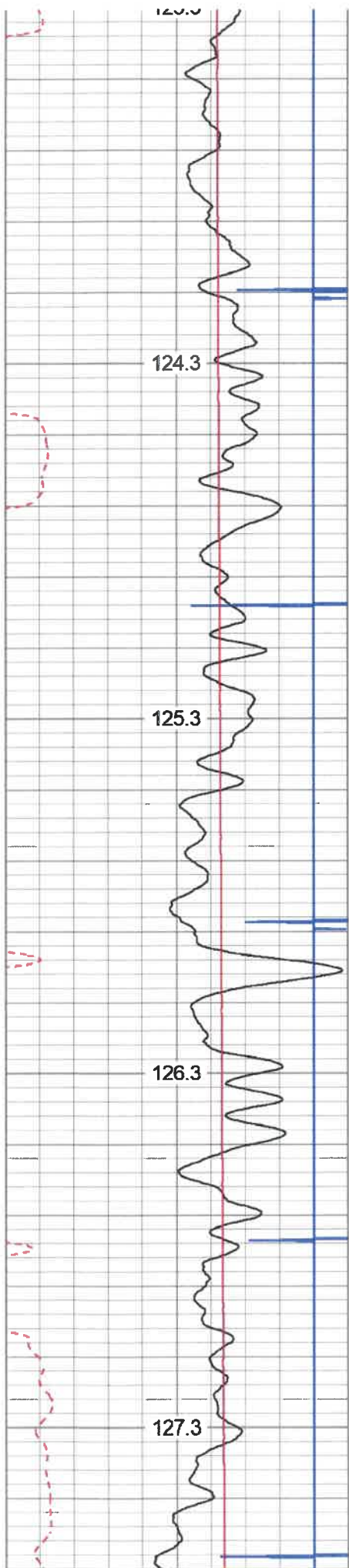
5500

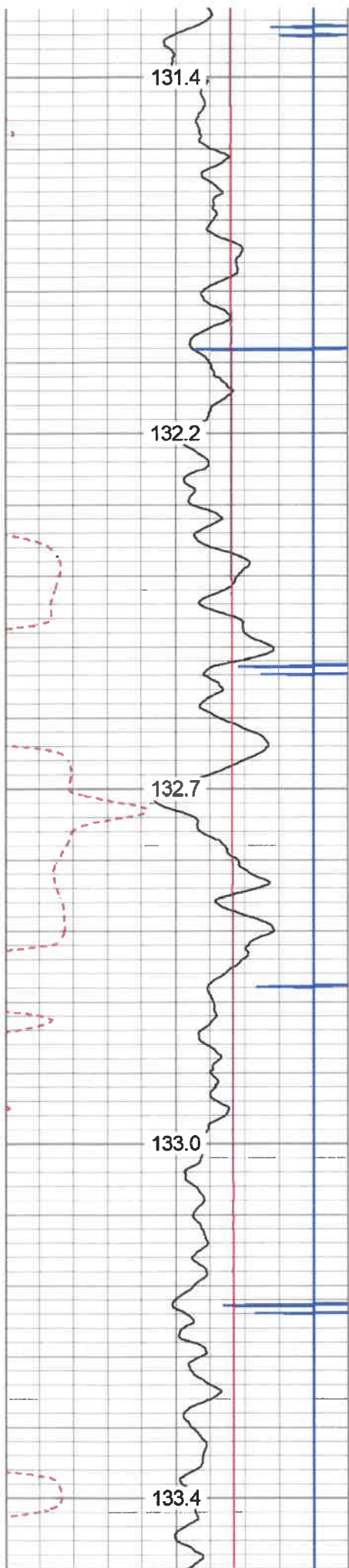
5550

5600

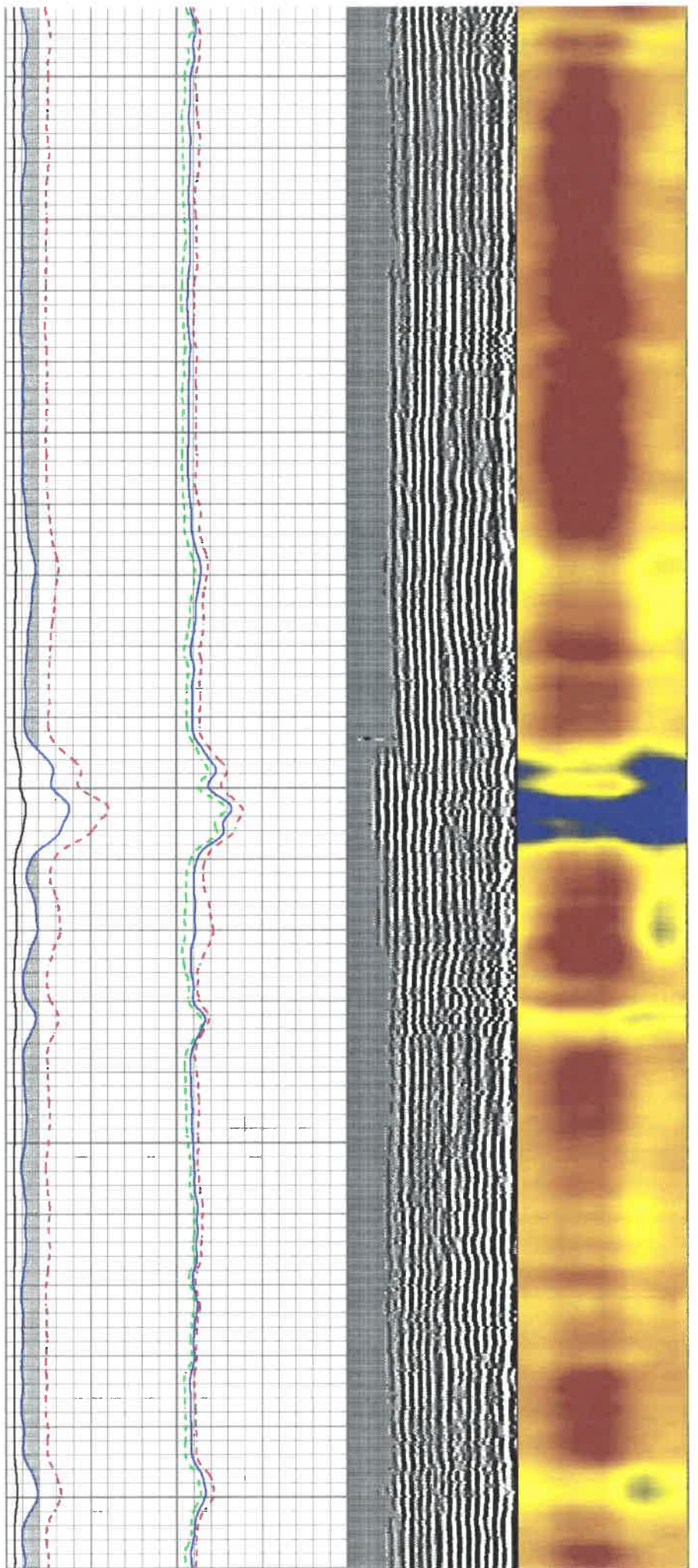
5650

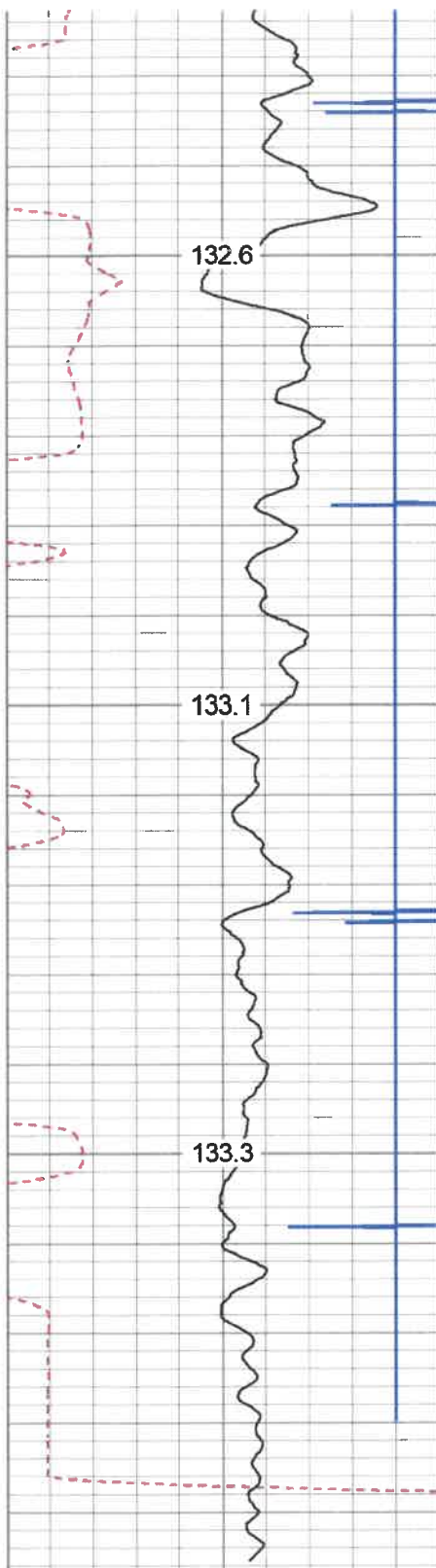






6350
6400
6450
6500
6550

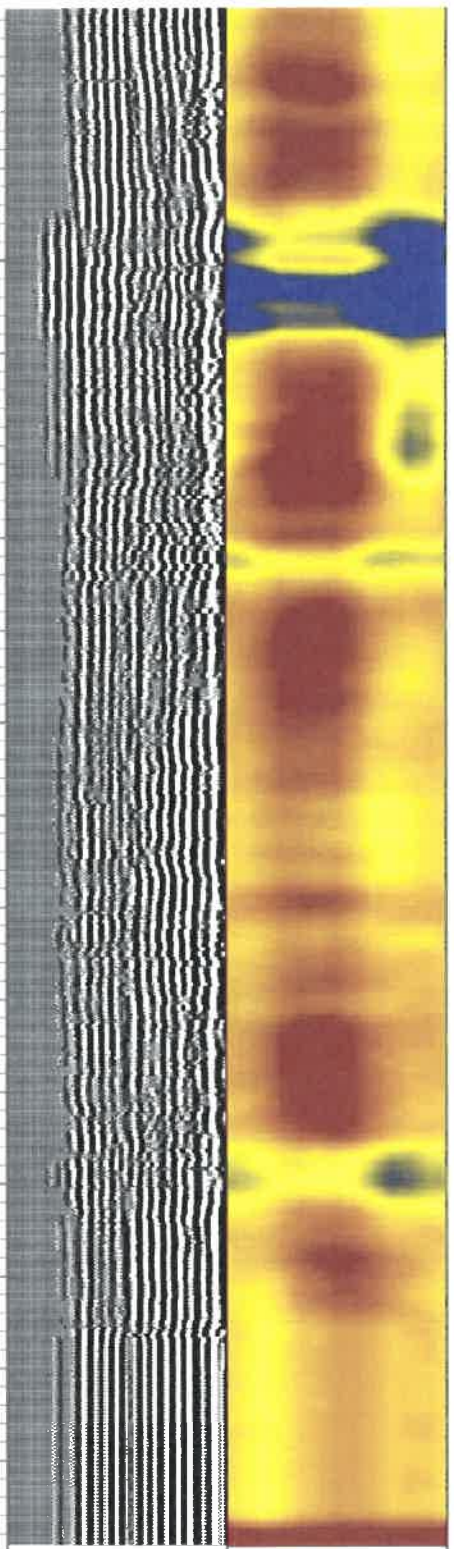
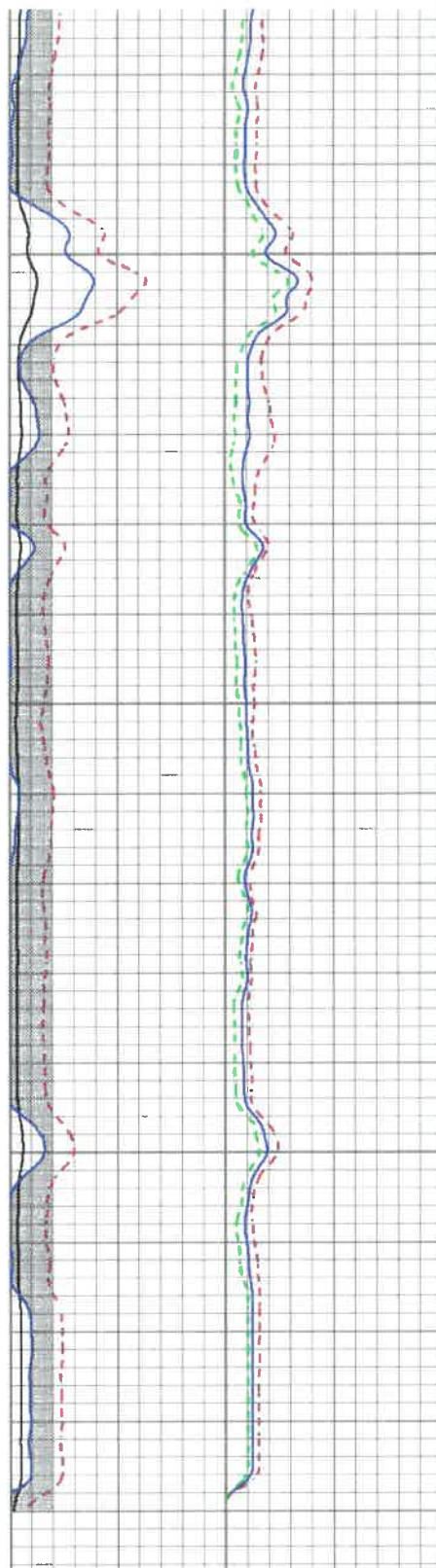




6450

6500

6550



280	Travel Time (usec)	180
9	Casing Collar	-1
0	Gamma Ray	180
0	TEMP (degF)	100
180	GR	360

TEMP
(degF)

Amplitude	Sector Amp AVG
0 (mV) 100	Sector Amp MAX
Amp X5	Sector Amp MIN
0 (mV) 20	
1 BONDIX 0	

VDL
(usec) 200 1200

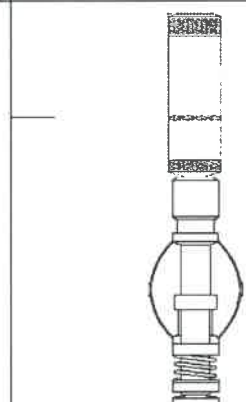
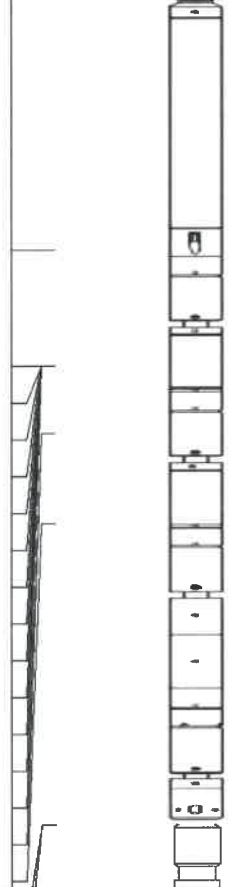
1 Sector Map 12

S8	0.034	2.224	0.000	100.000	45.674	-1.562
S9	0.039	2.224	0.000	100.000	45.772	-1.777
S10	0.038	2.205	0.000	100.000	46.166	-1.776
S11	0.036	2.151	0.000	100.000	47.283	-1.702
S12	0.037	2.136	0.000	100.000	47.657	-1.781

Temperature Calibration Report

Serial Number: IOL40-05
 Tool Model: Tek12
 Performed: Wed Jul 31 10:53:14 2013

	Reference		Reading	
Low Reference:	0.00 degF		0.00 usec	
High Reference:	1.00 degF		1.00 usec	
Gain:	0.33			
Offset:	0.00			
Delta Spacing:	2			

Sensor	Offset (ft)	Schematic	Description	Length (ft)	O.D. (in)	Weight (lb)	
CCL	18.93		CCL-312tekco (I08X3-01) Tekco 3 1/8" 450 Deg. "F" SmCo Logging CCL	1.82	3.12	25.00	
			Tek-2.75 2 3/4" Tekco Adjustable Centralizer	2.73	2.75	25.00	
TEMP	12.77		SCBL-Tek12 (IOL40-05) Tekco 400 Deg F 12 Sector RIB with Temp	9.13	3.25	135.00	
WVFS12	11.48						
WVFS11	11.48						
WVFS10	11.48						
WVFS9	11.48						
WVFS8	11.48						
WVFS7	11.48						
WVFS6	11.48						
WVFS5	11.48						
WVFS4	11.48						
WVFS3	11.48						
WVFS2	11.48						
WVFS1	11.48						
WVFCAL	10.73						
WV3FT	10.73						
WV5FT	9.73						