



**RADIAL CEMENT BOND / CCL
GAMMA RAY / VDL**

Company ANTERO RESOURCES CORPORATION
Well GABITALALEK 1H
Field MARCELLUS
County TYLER
State W.V.

Company ANTERO RESOURCES CORPORATION
Well GABITALALEK 1H
Field MARCELLUS
County TYLER State W.V.

Location: API #: 4709502580

Other Services

SEC	TWP	RGE	Elevation
Permanent Datum	G.L.		1009'
Log Measured From	K.B.		1039'
Drilling Measured From	K.B. OF 30'		G.L. 1009'

Date	10/10/19	
Run Number	ONE	
Depth Driller	18485'	
Depth Logger	6797'	
Bottom Logged Interval	6797'	
Top Log Interval	SURFACE	
Open Hole Size	N/A	
Type Fluid	H2O	
Density / Viscosity	N/A	
Max. Recorded Temp.	141 DEG	
Estimated Cement Top	3170'	
Time Well Ready	N/A	
Time Logger on Bottom	N/A	
Equipment Number	340	
Location	BRIDGEPORT, WV	
Recorded By	J.BOGGS	
Witnessed By	BRYAN HEMARD	

Borehole Record			Casing Record				
Run Number	Bit	From	To	Size	Weight	From	To
				13 3/8"	N/A	574'	SURFACE
				9 5/8"	N/A	2603'	SURFACE
				5 1/2"	N/A	18485'	SURFACE

<<< Fold Here >>>

All interpretations are opinions based on inferences from electrical or other measurements and we cannot and do not guarantee the accuracy or correctness of any interpretation, and we shall not, except in the case of gross or willful negligence on our part, be liable or responsible for any loss, costs, damages, or expenses incurred or sustained by anyone resulting from any interpretation made by any of our officers, agents or employees. These interpretations are also subject to our general terms and conditions set out in our current Price Schedule.

Comments

THANK YOU FOR USING KLX ENERGY SERVICES
TOP OF CEMENT @ 3170'
MARKER JOINT @ 5639'-5649'
BOTTOM HOLE TEMP- 141 DEG

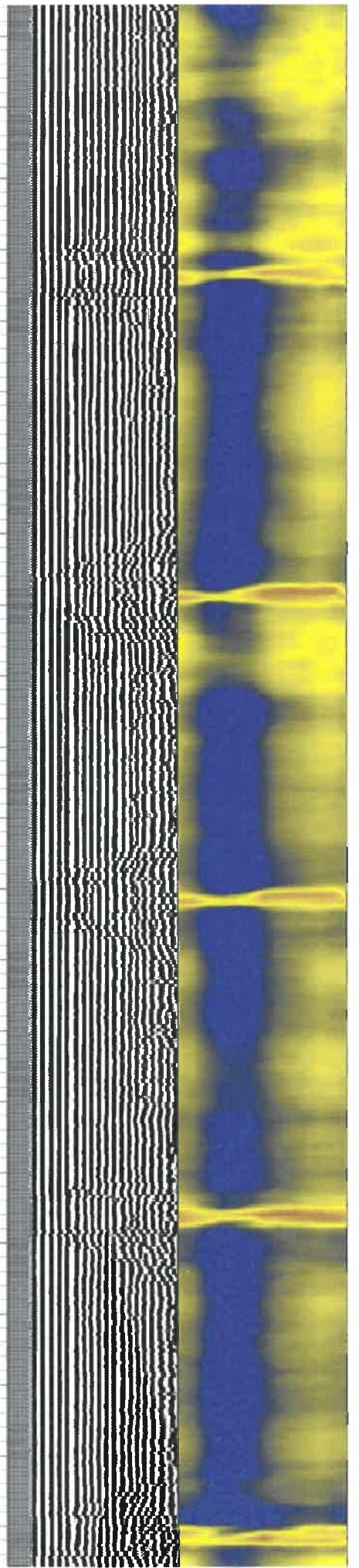
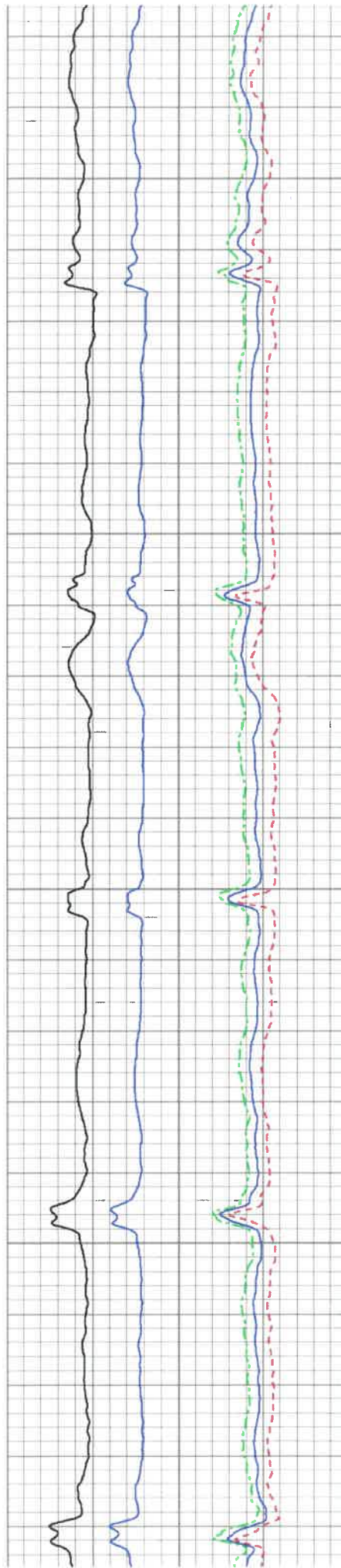


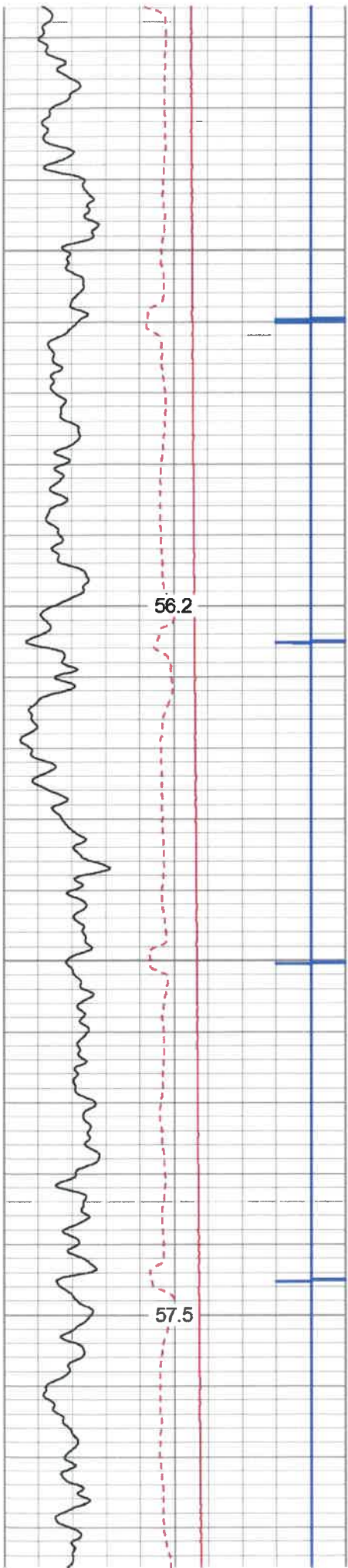
LOGGED UNDER 1500 PSI.



200

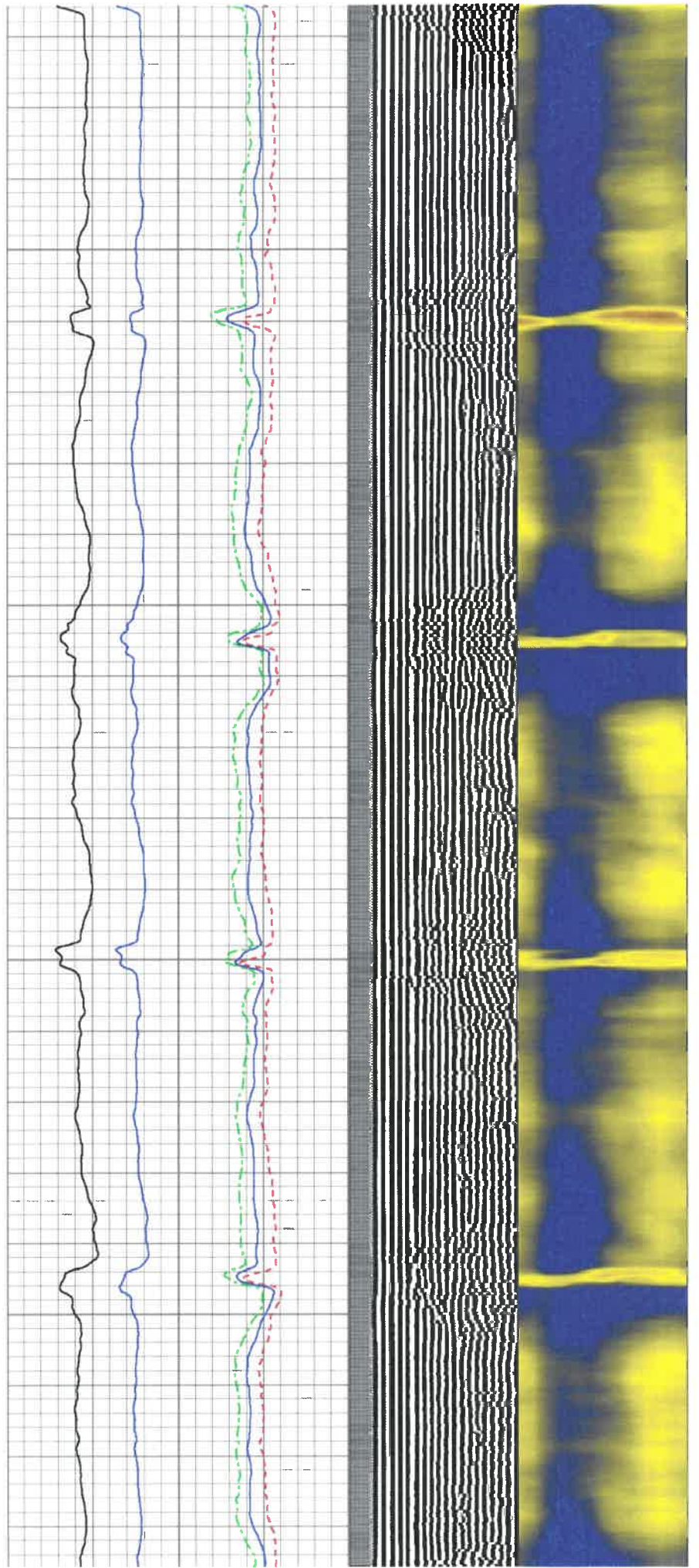
300

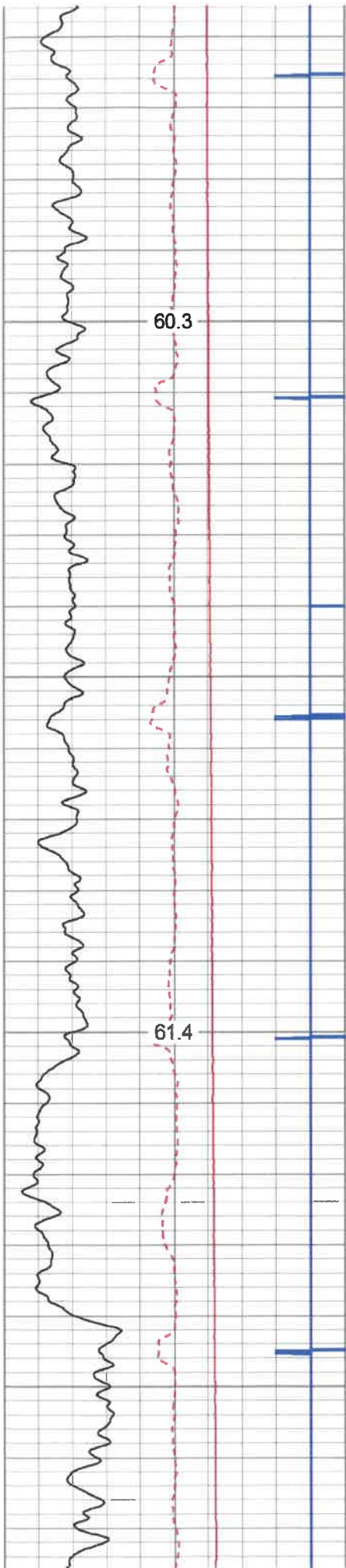




700

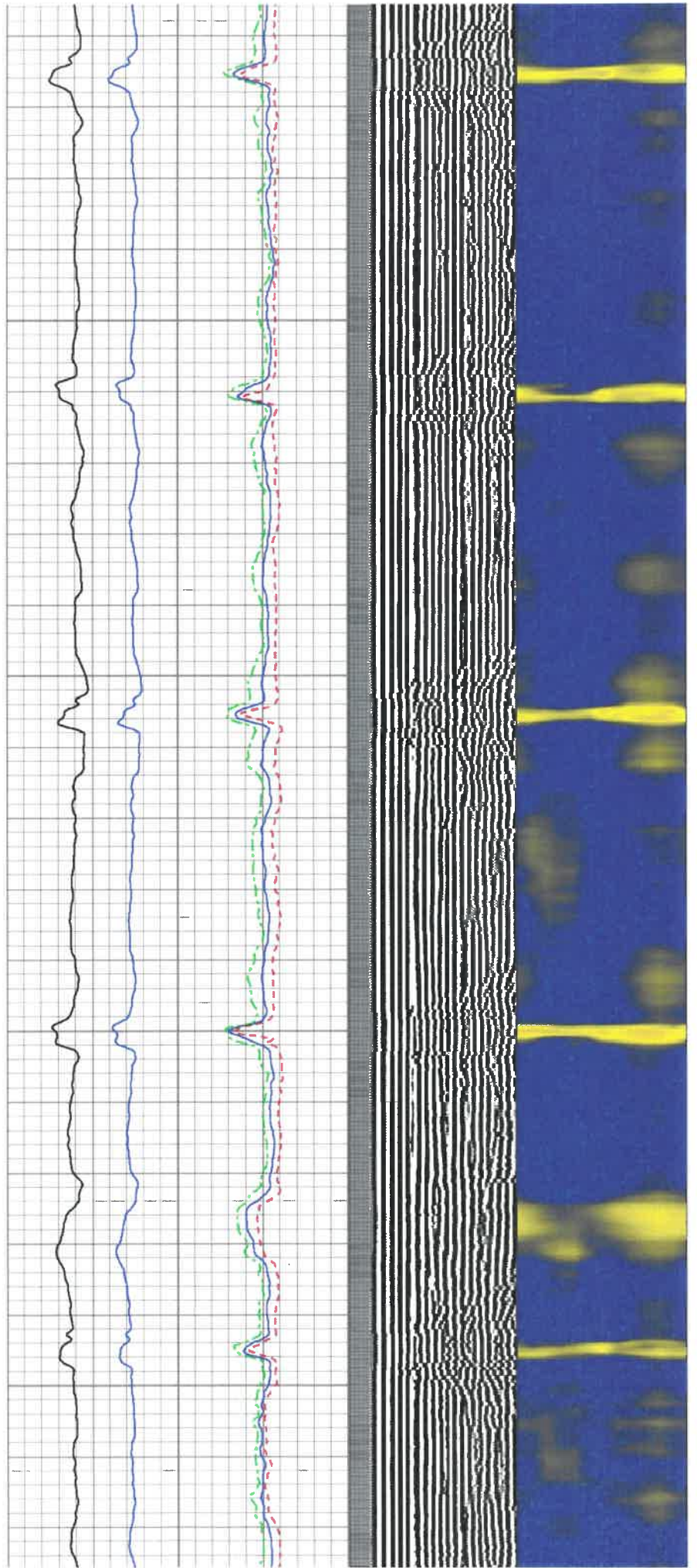
800

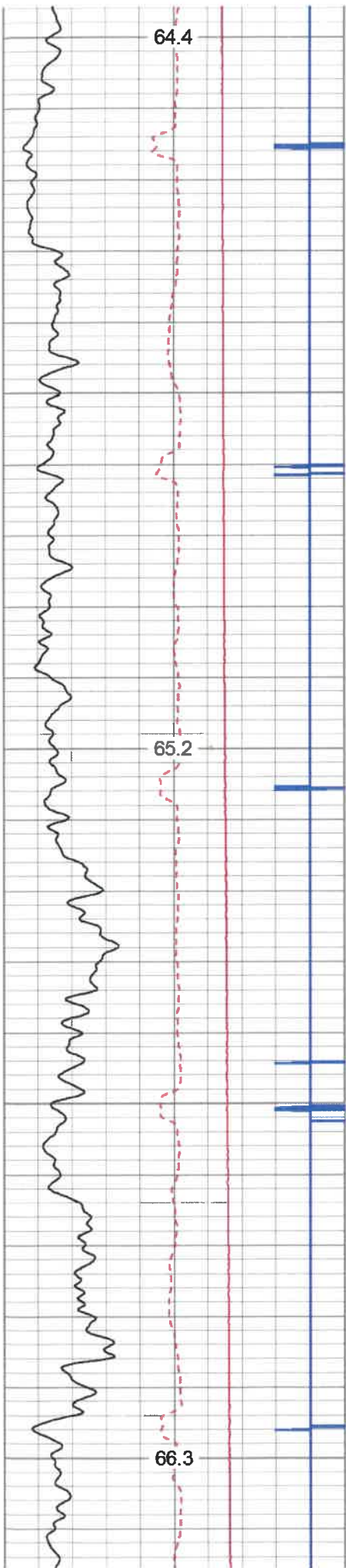




1100

1200

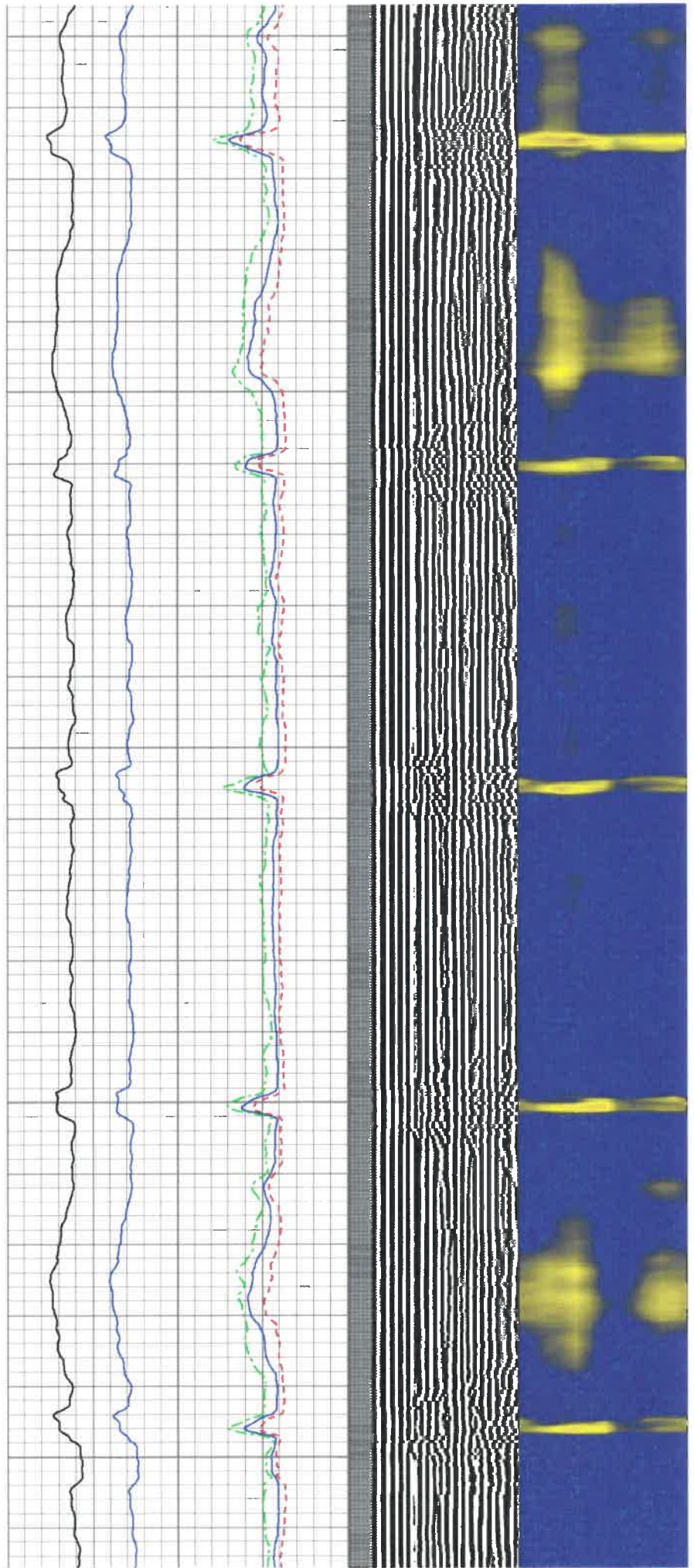


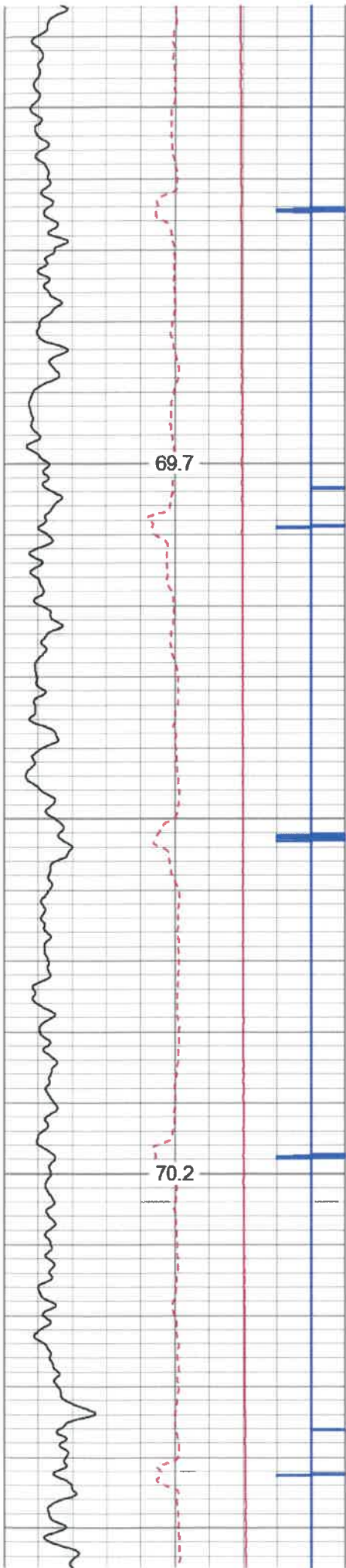


1500

1600

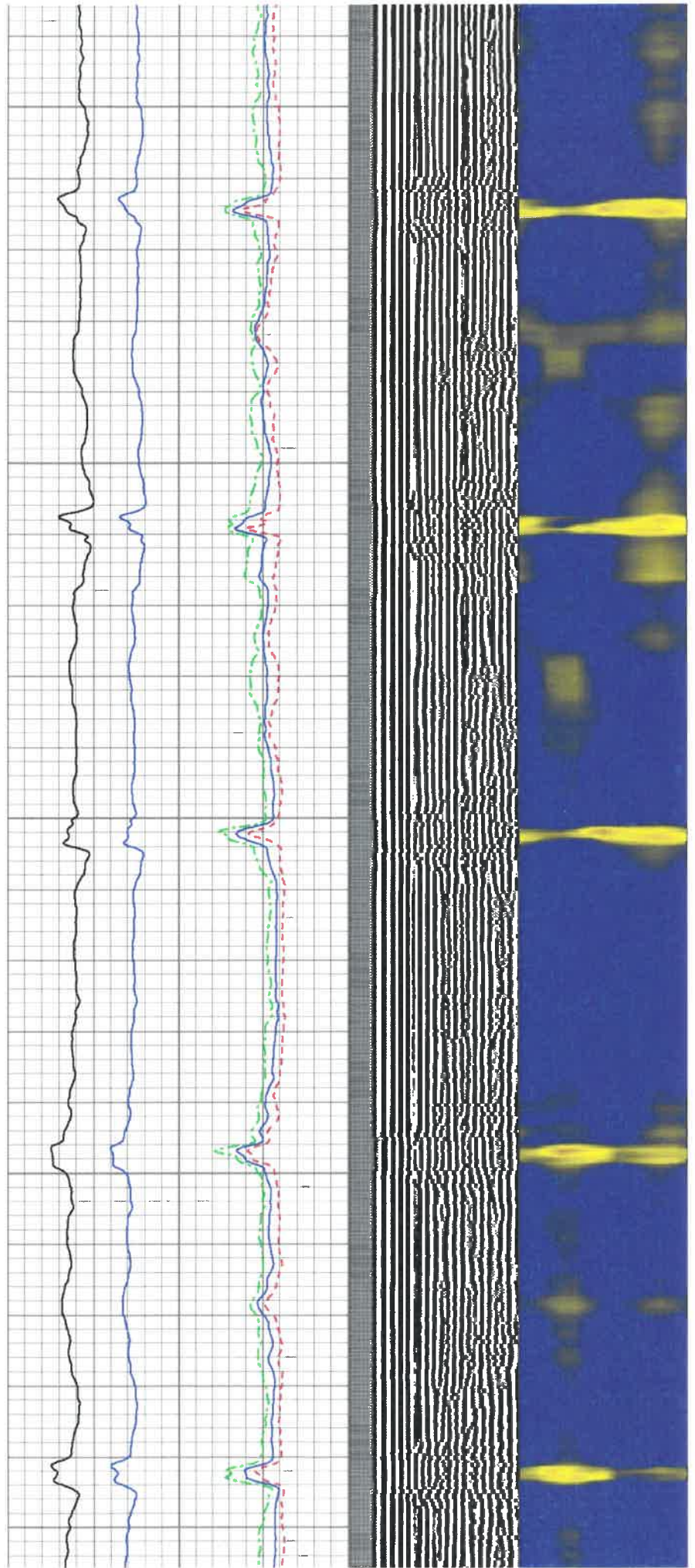
1700

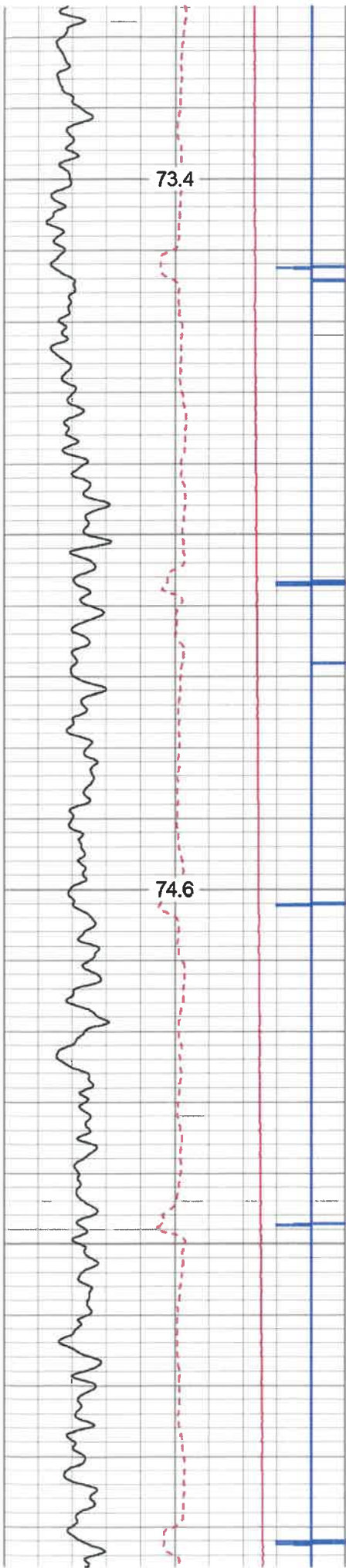




2000

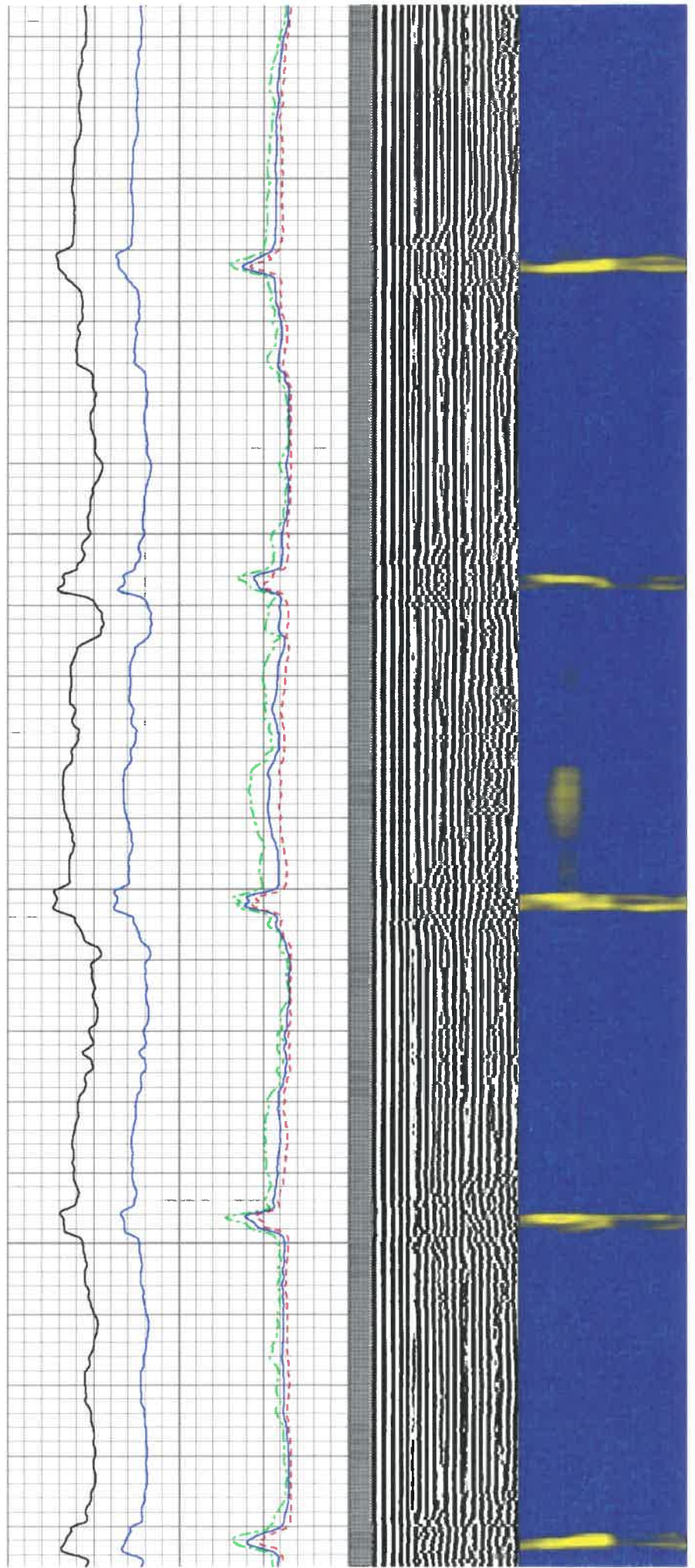
2100

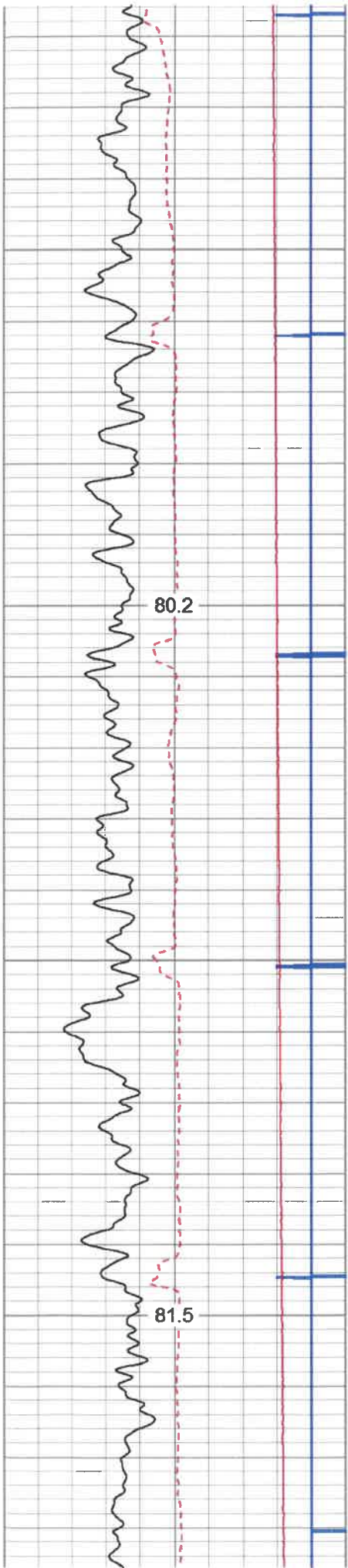




2400

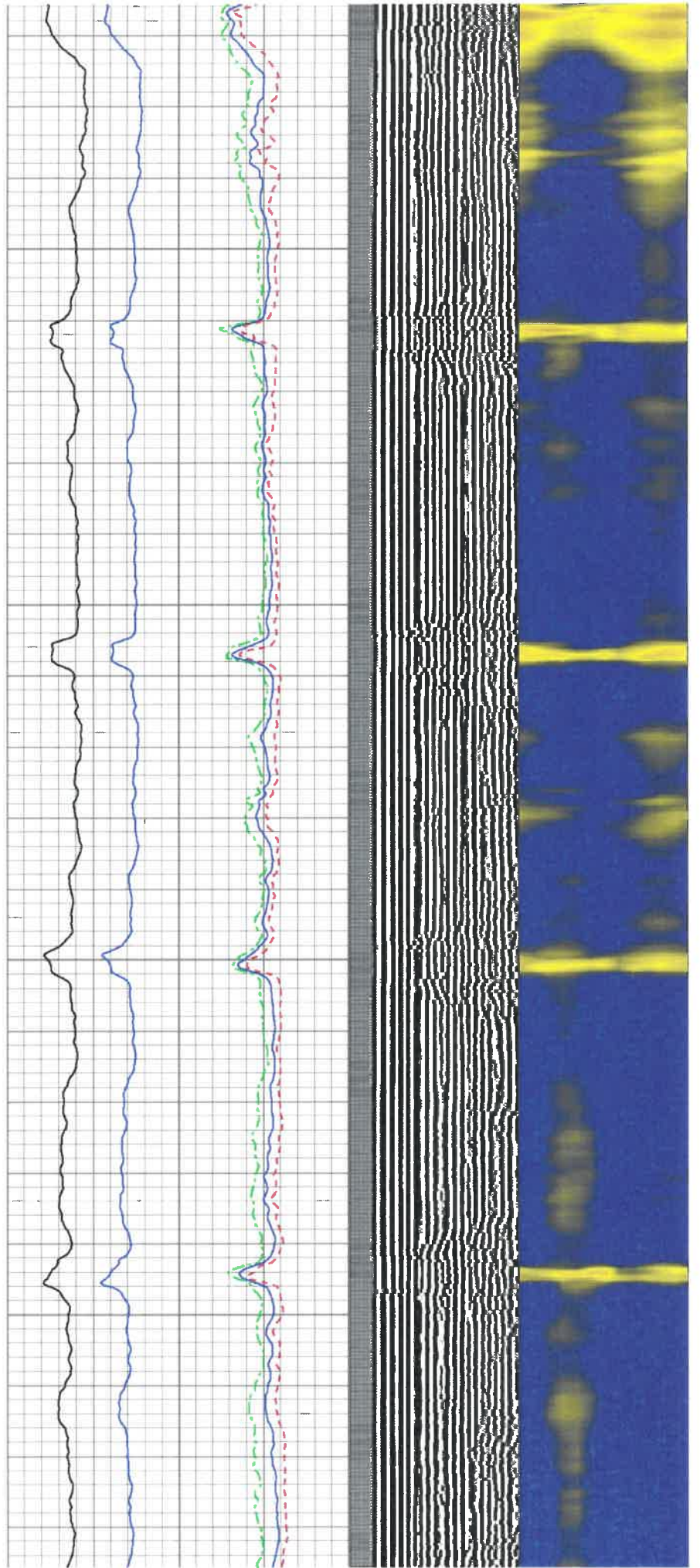
2500

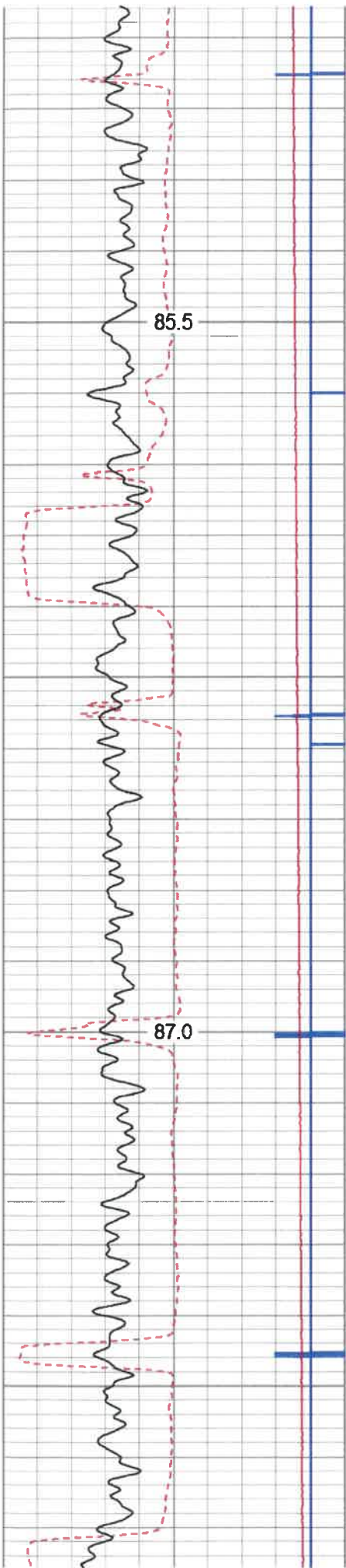




2900

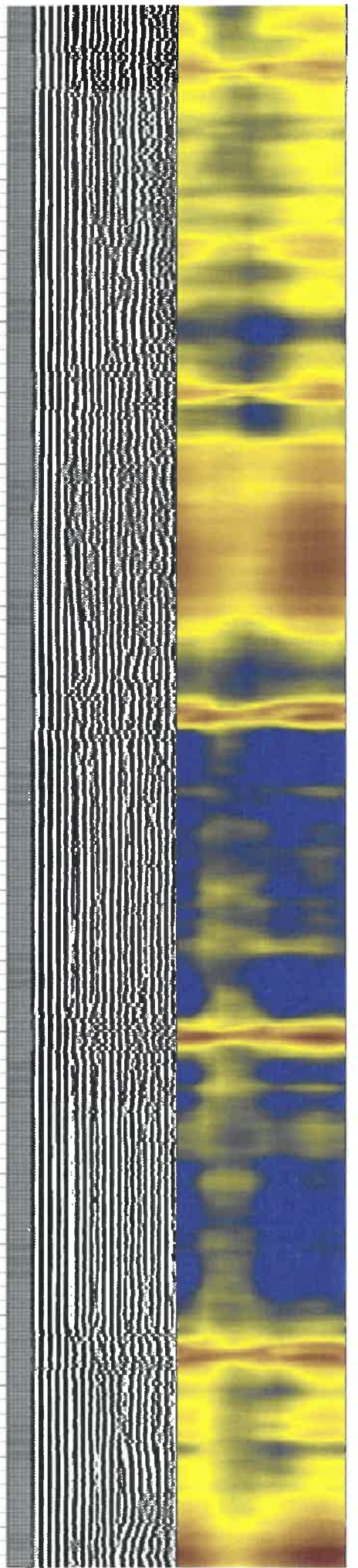
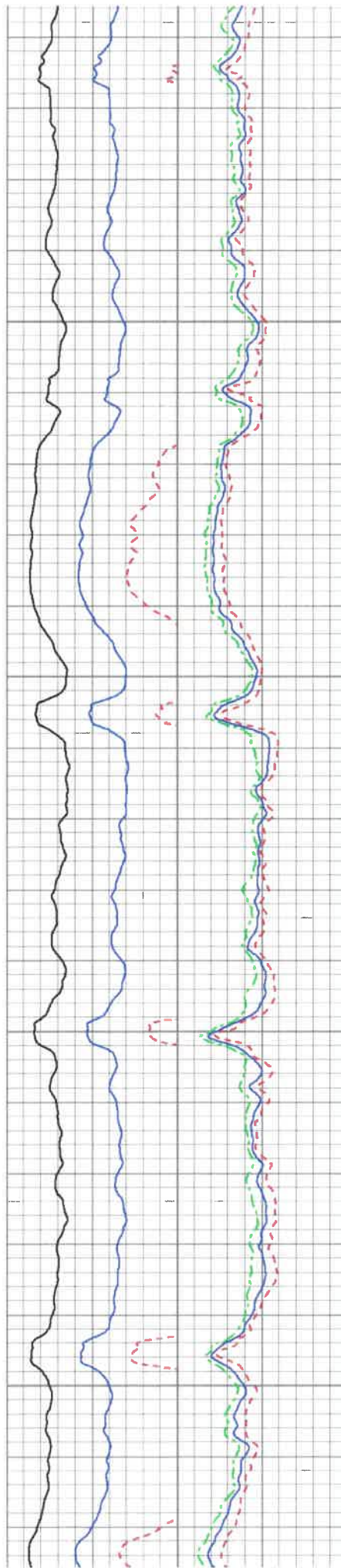
3000

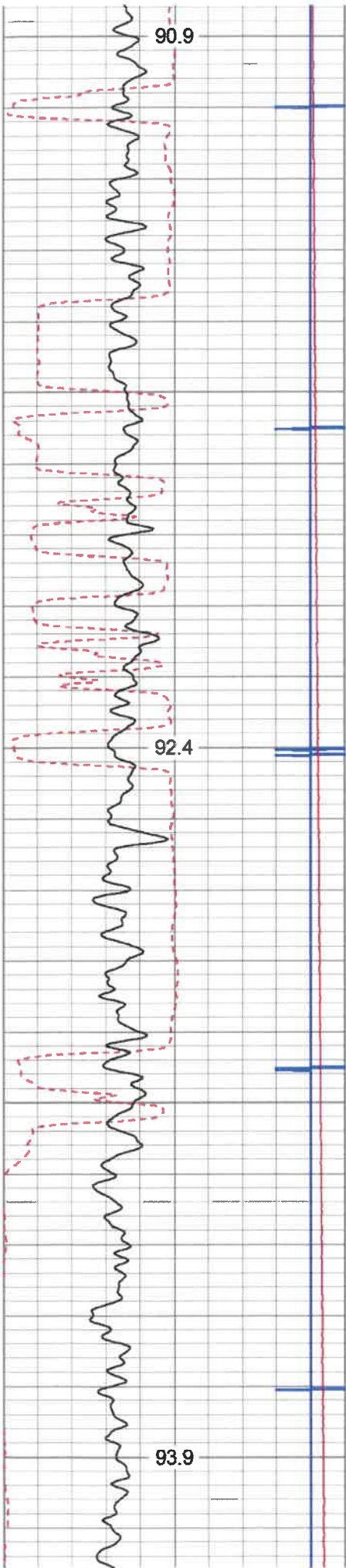




3300

3400

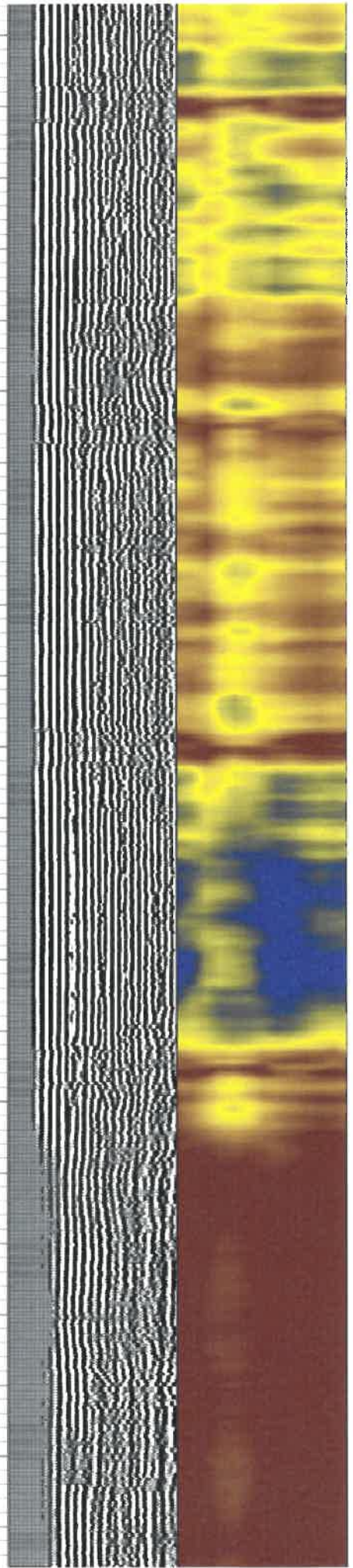
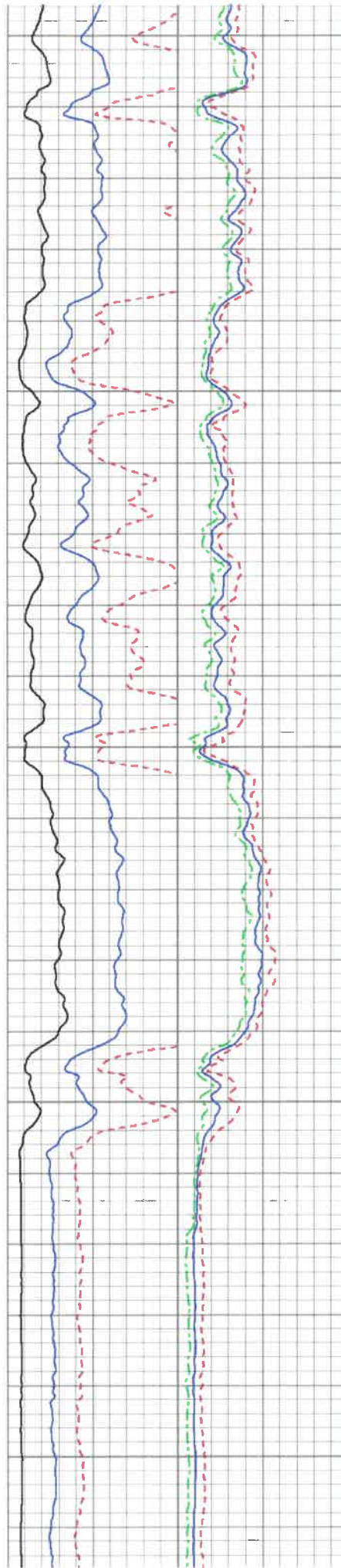


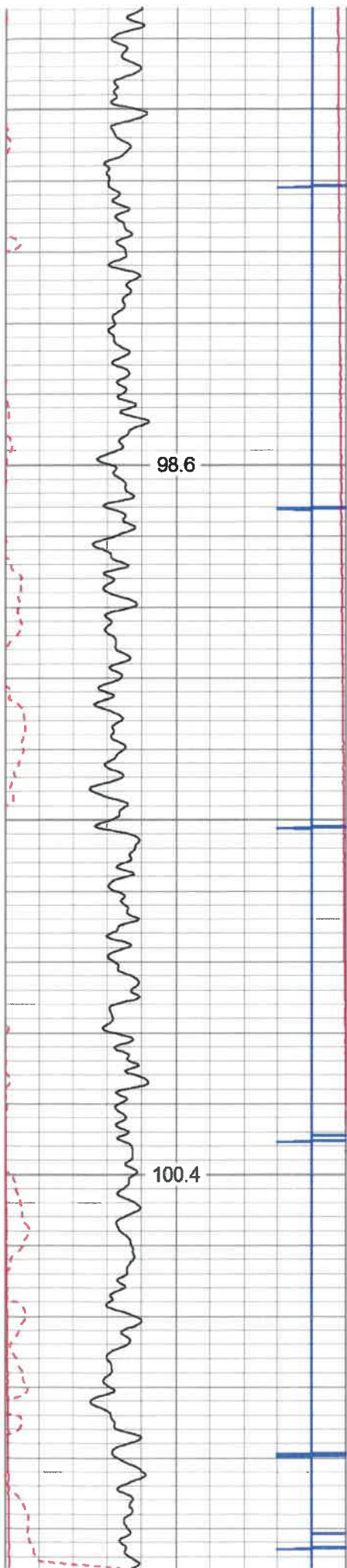


3700

3800

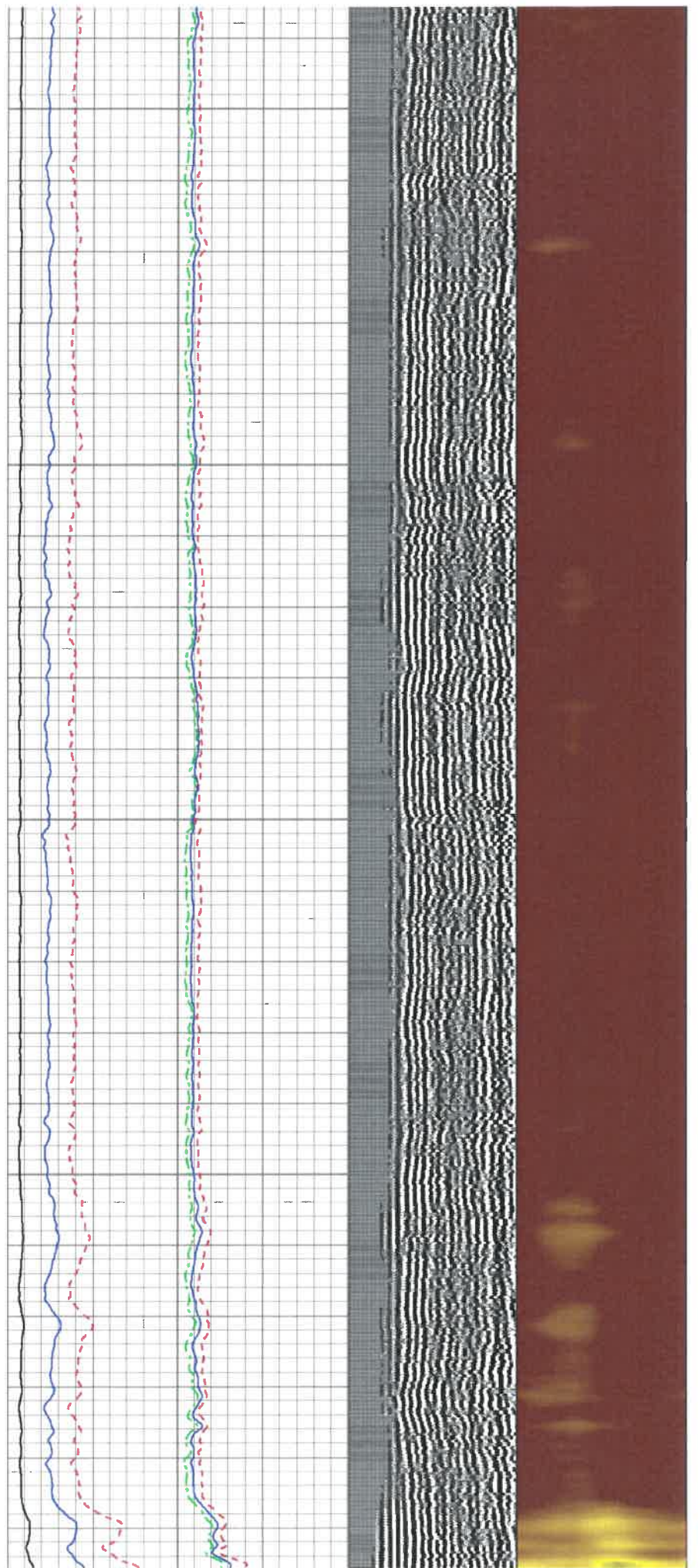
3900

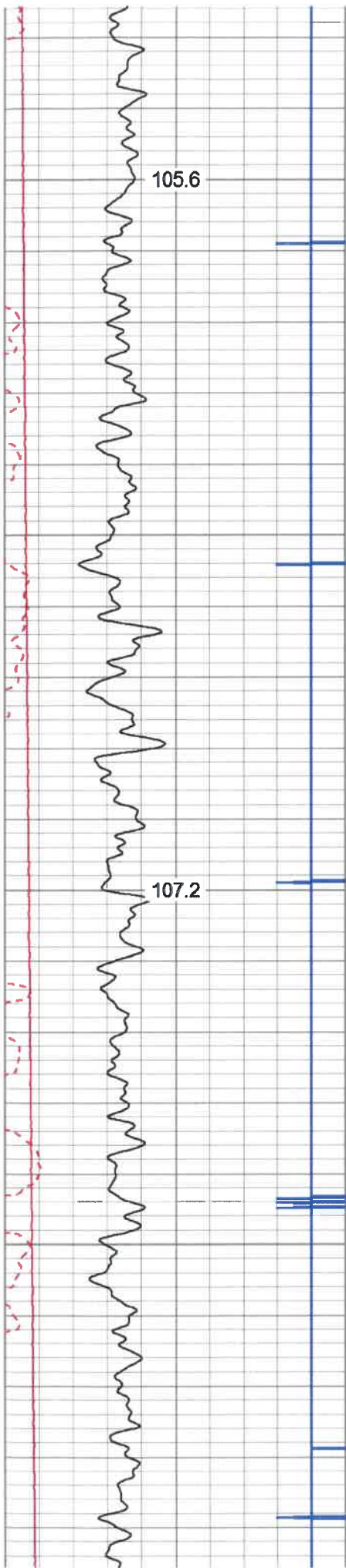




4200

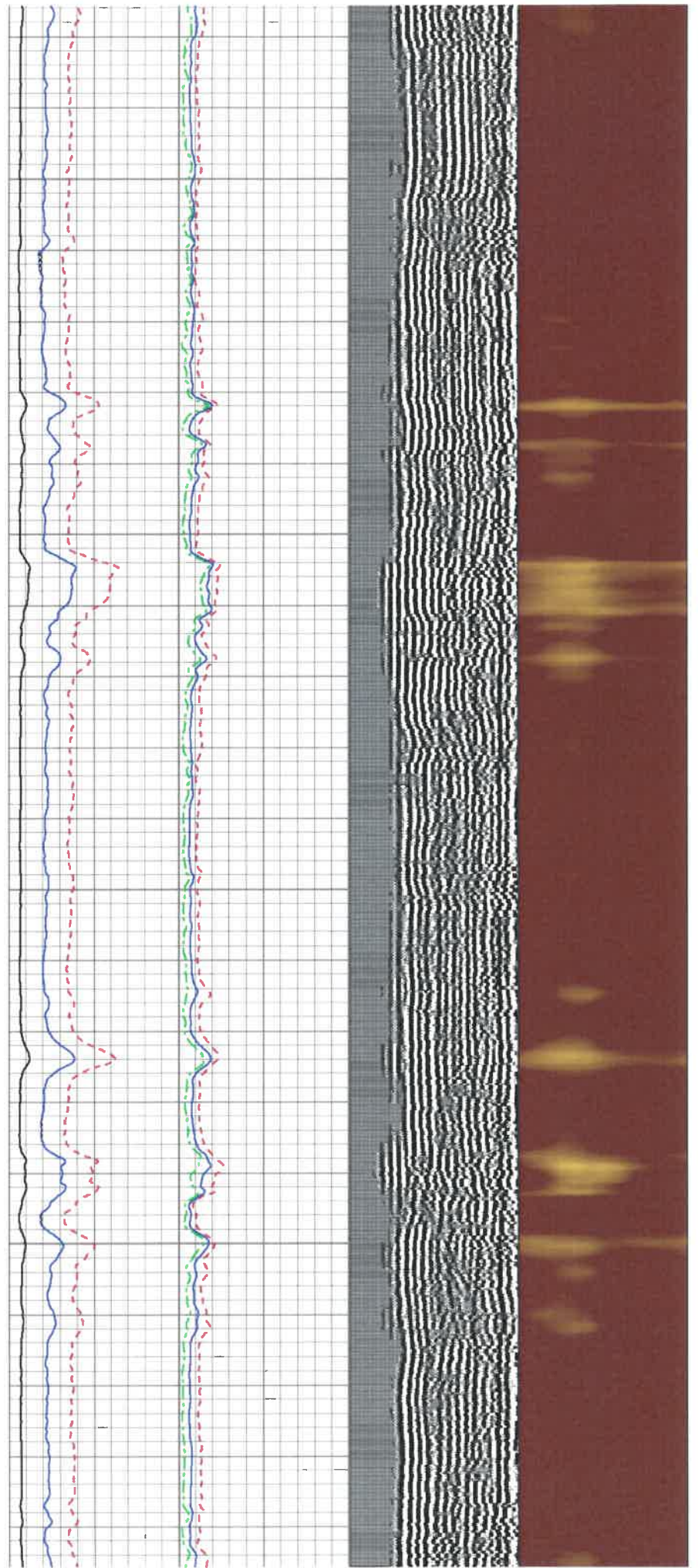
4300

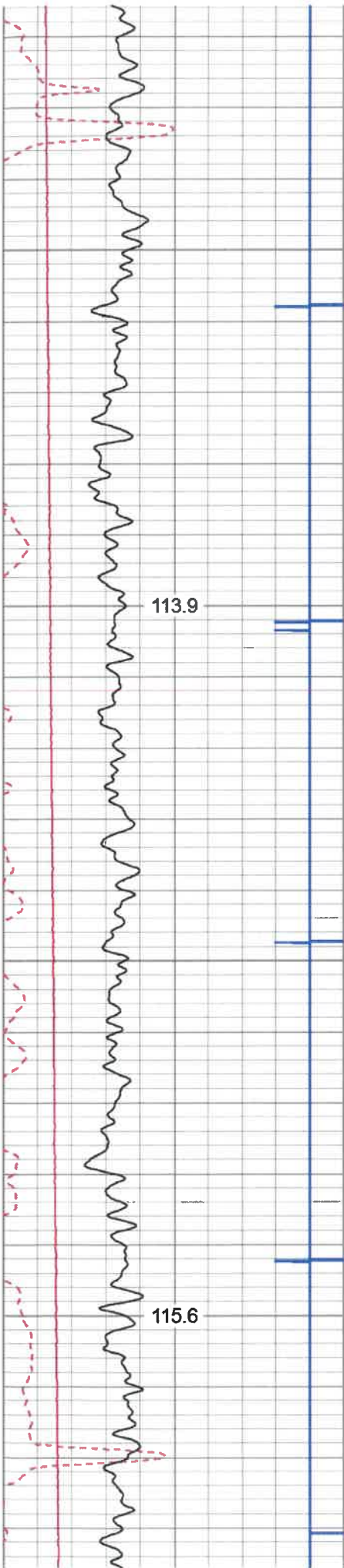




4600

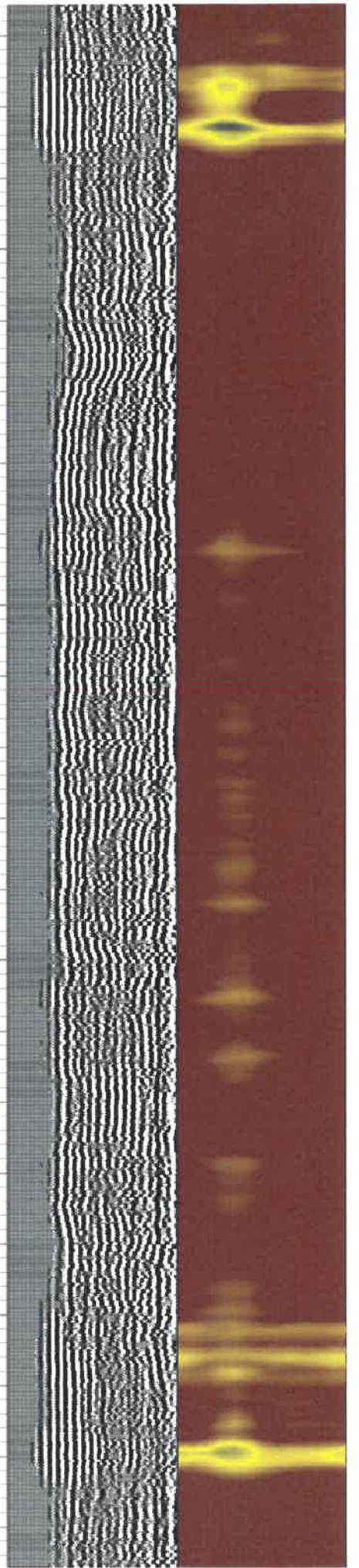
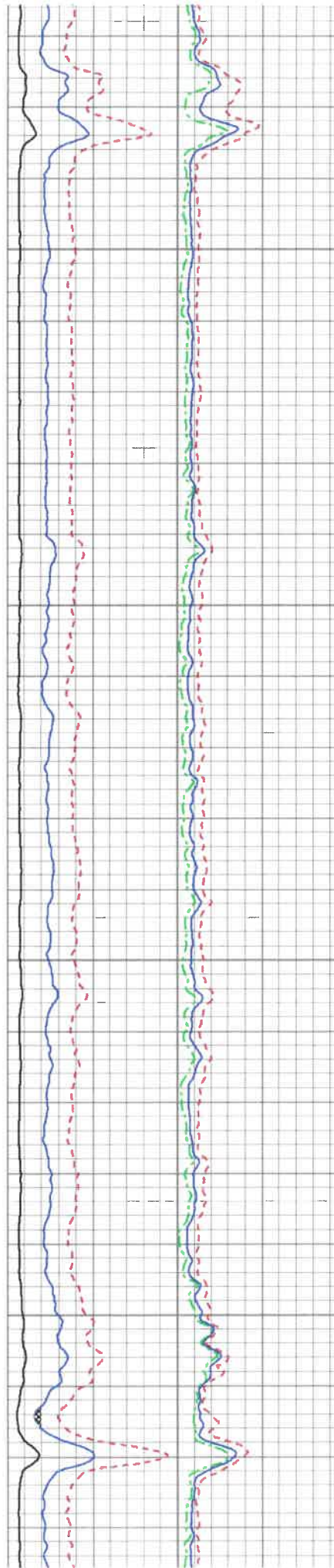
4700

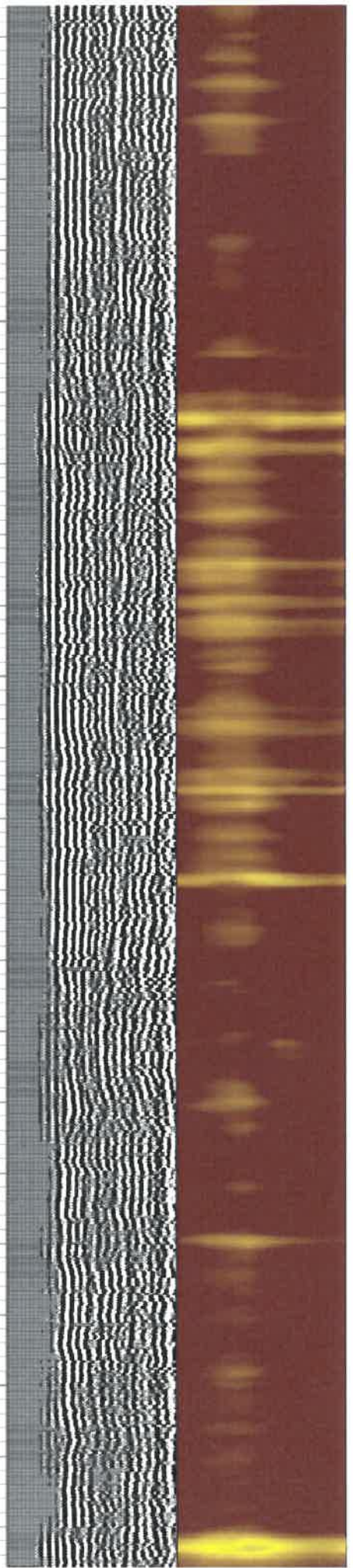
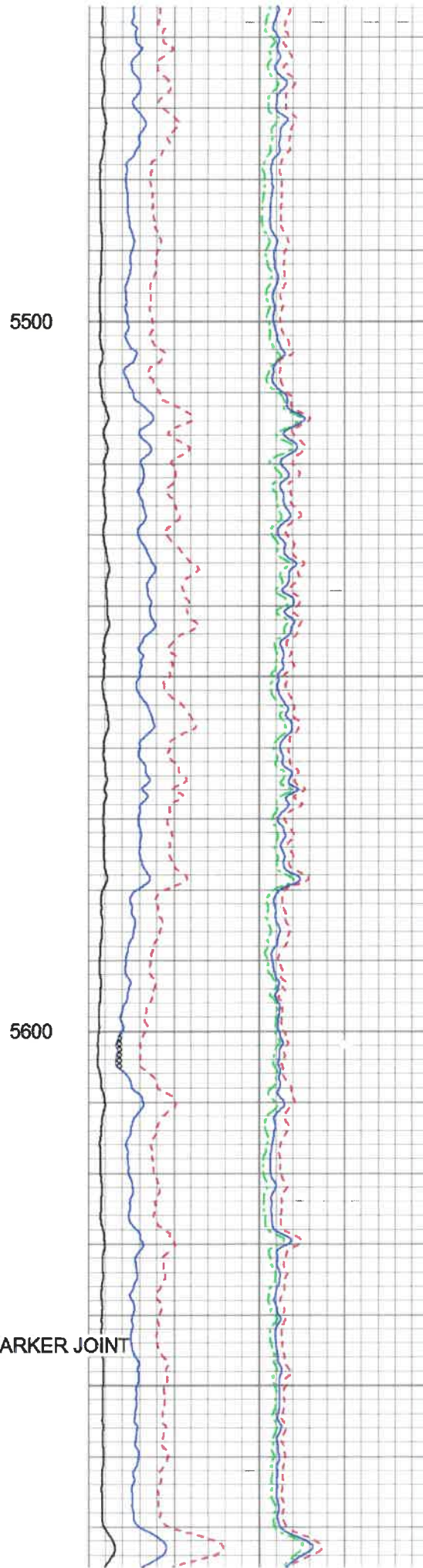
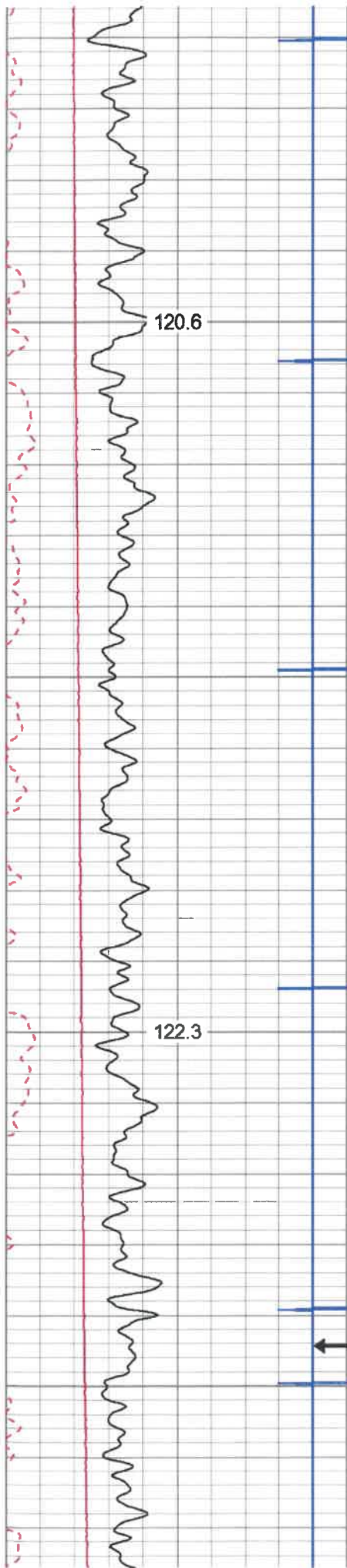


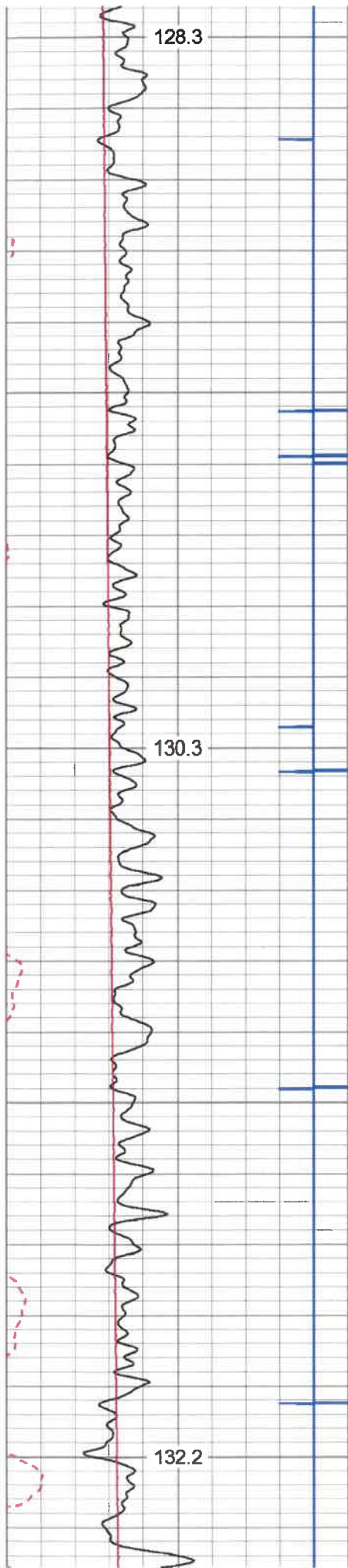


5100

5200



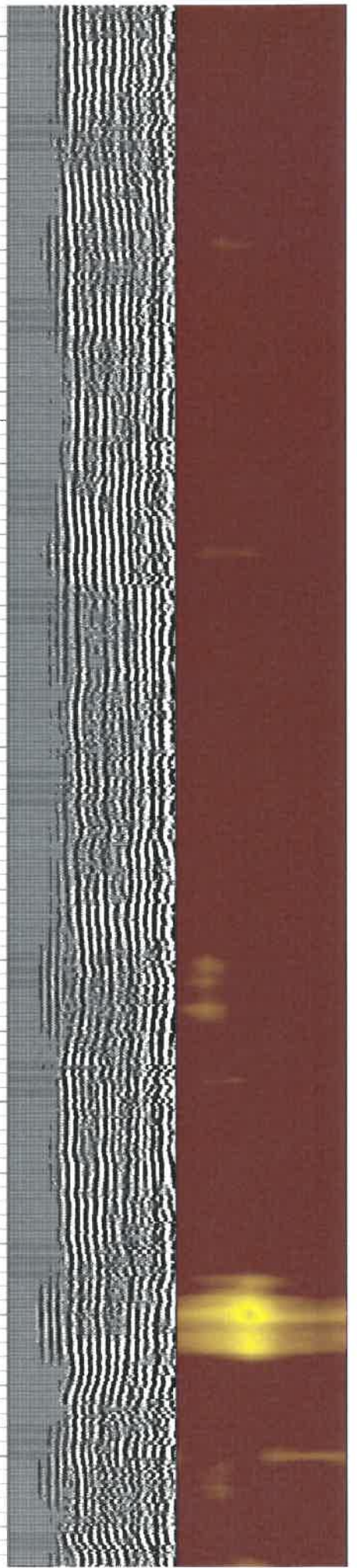
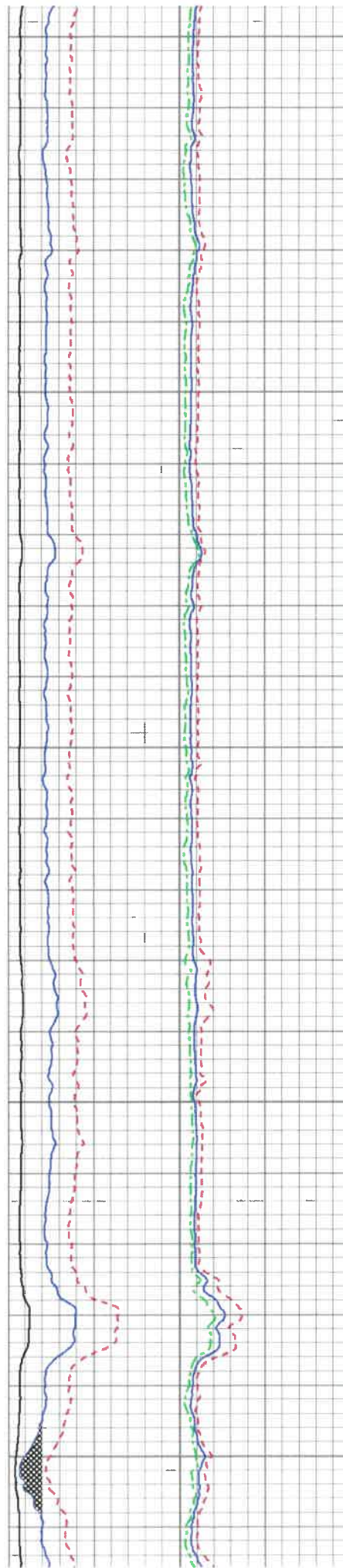


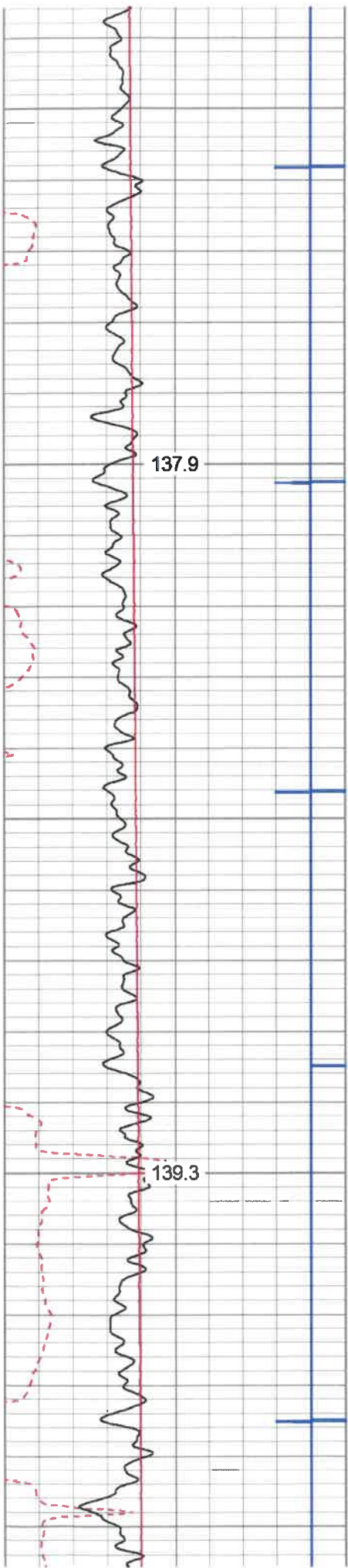


5900

6000

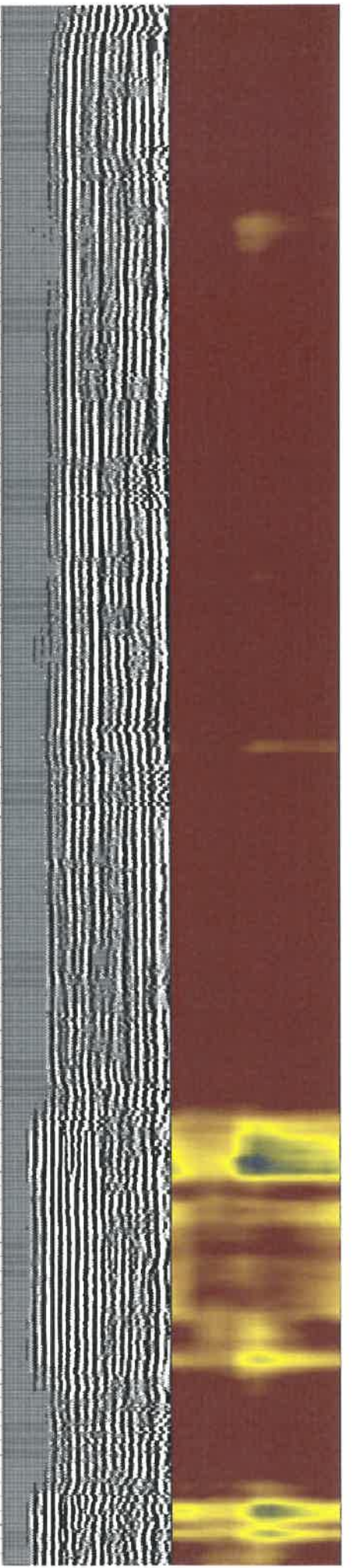
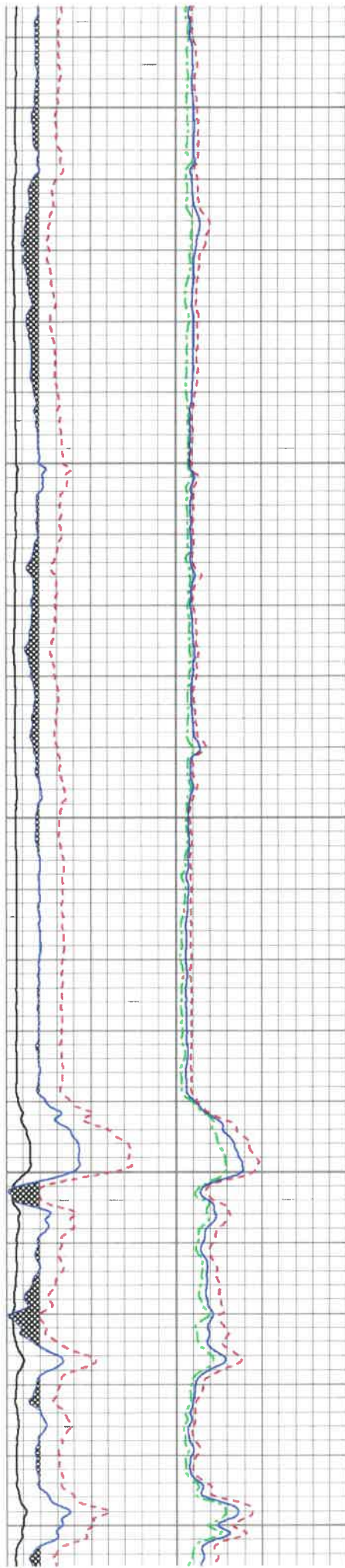
6100

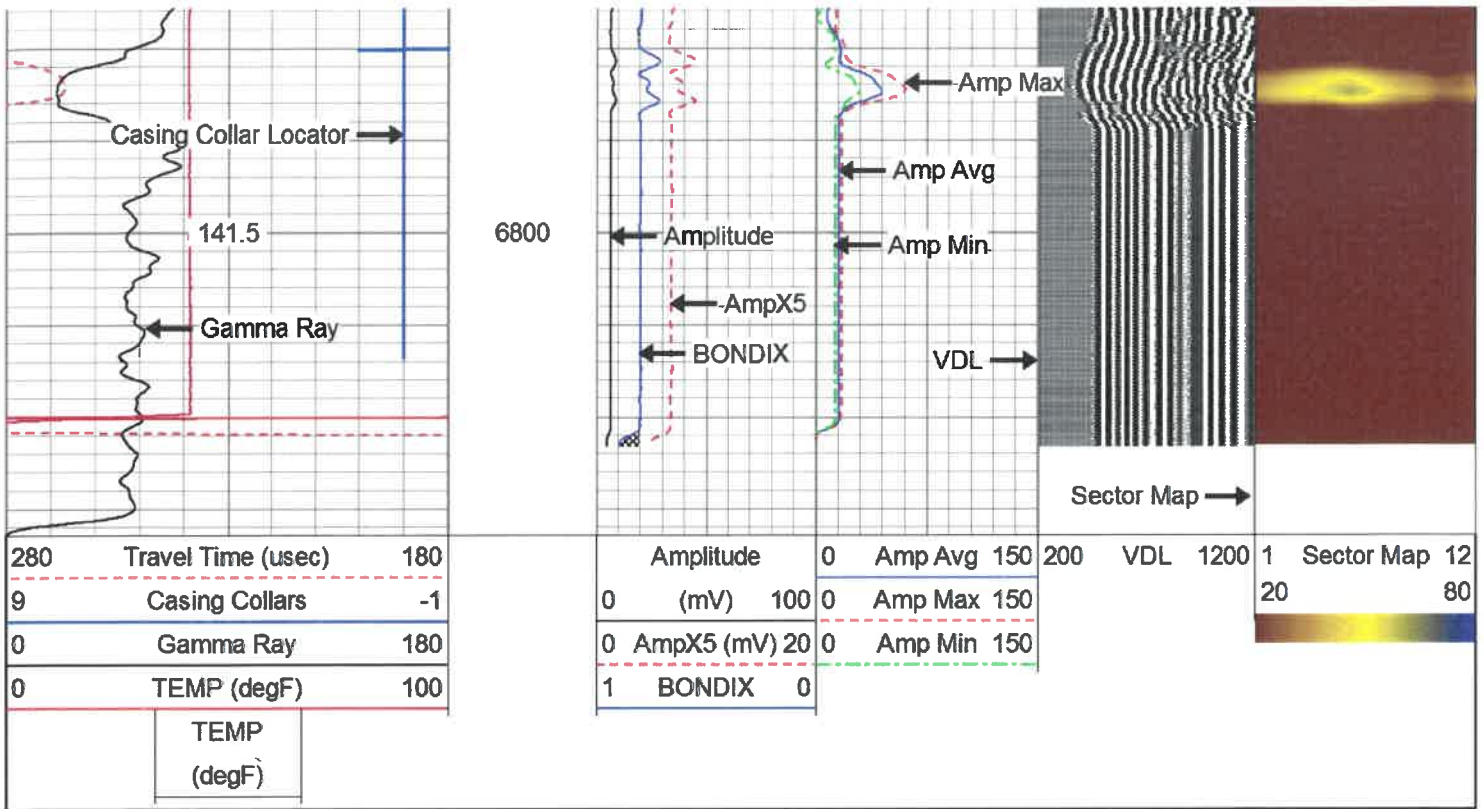




6400

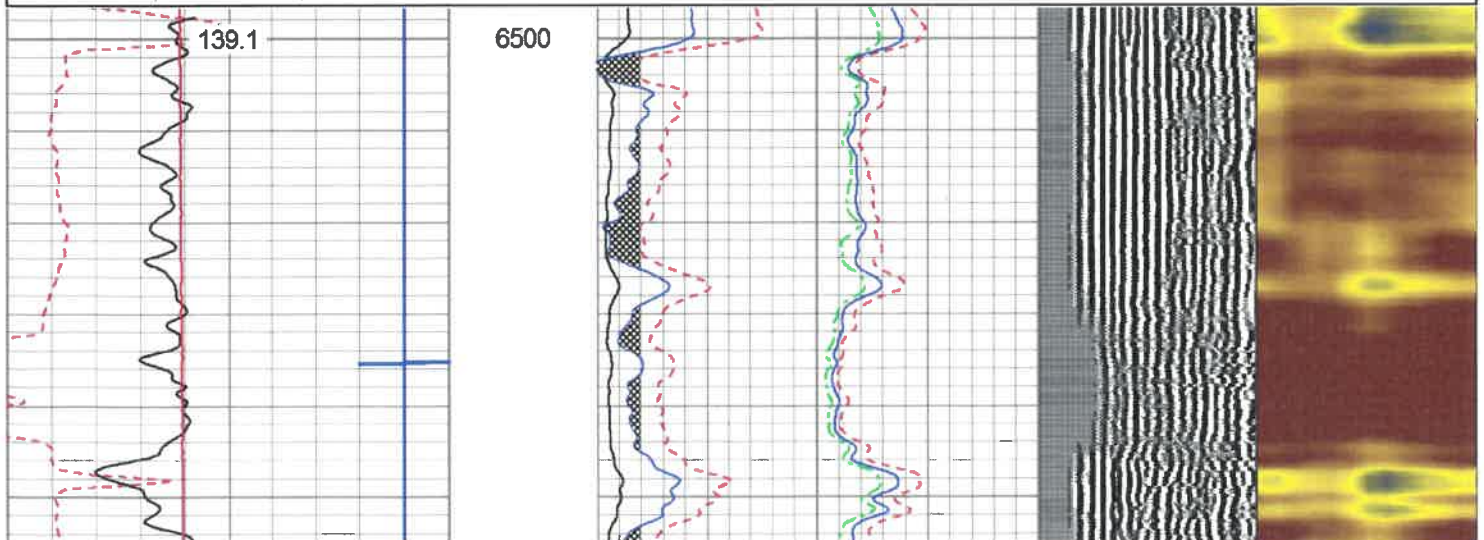
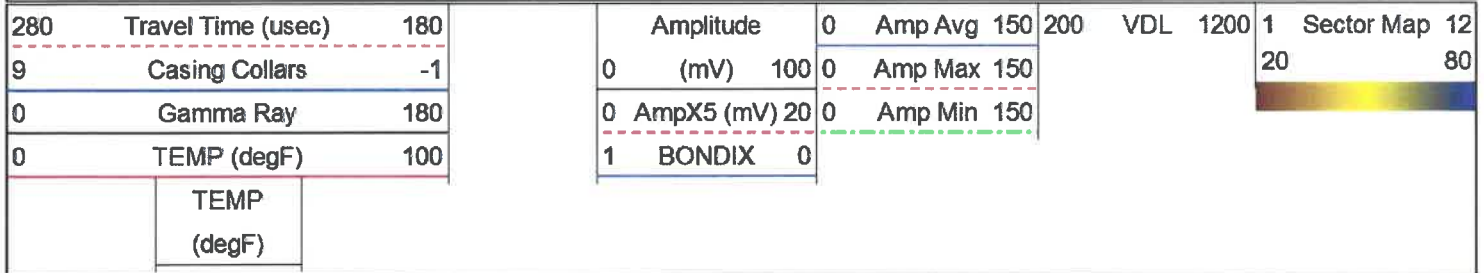
6500





REPEAT SECTION

Database File: e:\gab 1h.db
 Dataset Pathname: pass2.1
 Presentation Format: antero
 Dataset Creation: Thu Oct 10 16:48:54 2019 by Calc 7.0 B1
 Charted by: Depth in Feet scaled 1:240



(degF)

Sensor	Offset (ft)	Schematic	Description	Len (ft)	OD (in)	Wt (lb)	
CCL	18.93		CCL-312tekco (3.12TEKCO) Tekco 3 1/8" 450 Deg. "F" SmCo Logging CCL	1.82	3.12	25.00	
			2.75 2 3/4" Tekco Adjustable Centralizer	2.73	2.75	25.00	
TEMP	12.77						
WVFS1	11.48			SCBL-Tek12 (IOL40-05) Tekco 400 Deg F 12 Sector RIB with Temp	9.13	3.25	135.00
WVFS2	11.48						
WVFS3	11.48						
WVFS4	11.48						
WVFS5	11.48						
WVFS6	11.48						
WVFS7	11.48						
WVFS8	11.48						
WVFS9	11.48						
WVFS10	11.48						
WVFS11	11.48						
WVFS12	11.48						
WVF3FT	10.73						
WVFCAL	10.73						
WVF5FT	9.73						
WVFTEMP	6.40						
WVFSYNC	6.40		2.75 2 3/4" Tekco Adjustable Centralizer	2.73	2.75	25.00	
			GR-Tek-Co 2 3/4 (IPSNO-03) Tekco 2 3/4" 400 Deg. F Logging Gamma Ray	3.67	2.75	40.00	
GR	1.04						