



**RADIAL CEMENT BOND / CCL
GAMMA RAY / VDL**

Company ANTERO RESOURCES CORPORATION
Well GABITALALEK 2H
Field MARCELLUS
County TYLER
State W.V.

Company ANTERO RESOURCES CORPORATION
Well GABITALALEK 2H
Field MARCELLUS
County TYLER State W.V.

Location: API #: 4709502581

Other Services

SEC	TWP	RGE	Elevation
Permanent Datum	G.L.	Elevation	1009'
Log Measured From	K.B.	K.B. 1039'	D.F. 1039'
Drilling Measured From	K.B. OF 30'	G.L. 1009'	

Date	10/10/19	
Run Number	ONE	
Depth Driller	19111'	
Depth Logger	7018'	
Bottom Logged Interval	7018'	
Top Log Interval	SURFACE	
Open Hole Size	N/A	
Type Fluid	H2O	
Density / Viscosity	N/A	
Max. Recorded Temp.	140 DEG	
Estimated Cement Top	3540'	
Time Well Ready	N/A	
Time Logger on Bottom	N/A	
Equipment Number	340	
Location	BRIDGEPORT, WV	
Recorded By	J.BOGGS	
Witnessed By	BRYAN HEMARD	

Borehole Record			Casing Record				
Run Number	Bit	From	To	Size	Weight	From	To
				13 3/8"	N/A	569'	SURFACE
				9 5/8"	N/A	2636'	SURFACE
				5 1/2"	N/A	19111'	SURFACE

<<< Fold Here >>>

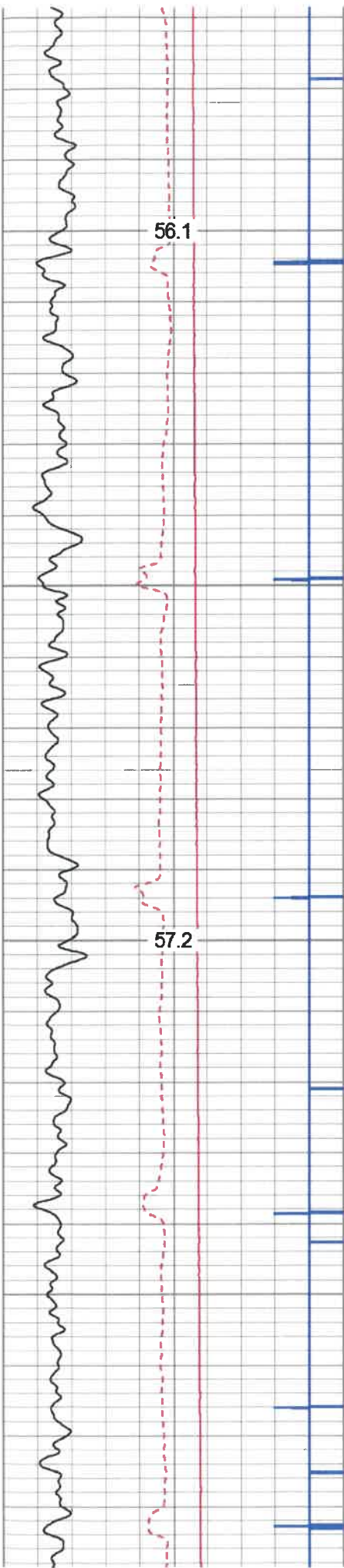
All interpretations are opinions based on inferences from electrical or other measurements and we cannot and do not guarantee the accuracy or correctness of any interpretation, and we shall not, except in the case of gross or willful negligence on our part, be liable or responsible for any loss, costs, damages, or expenses incurred or sustained by anyone resulting from any interpretation made by any of our officers, agents or employees. These interpretations are also subject to our general terms and conditions set out in our current Price Schedule.

Comments

THANK YOU FOR USING KLX ENERGY SERVICES
 TOP OF CEMENT @ 3540'
 MARKER JOINT @ 5812'-5822'
 BOTTOM HOLE TEMP- 140 DEG

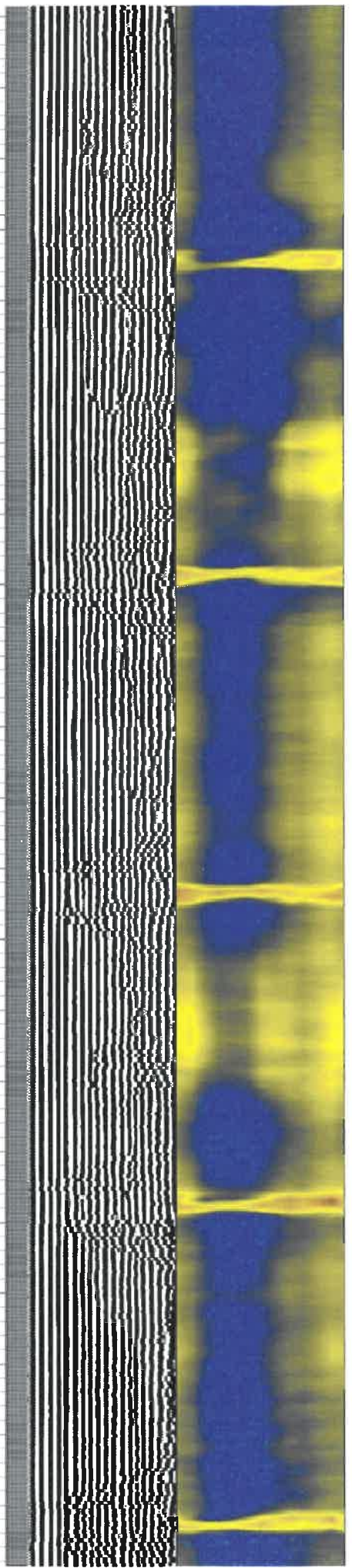
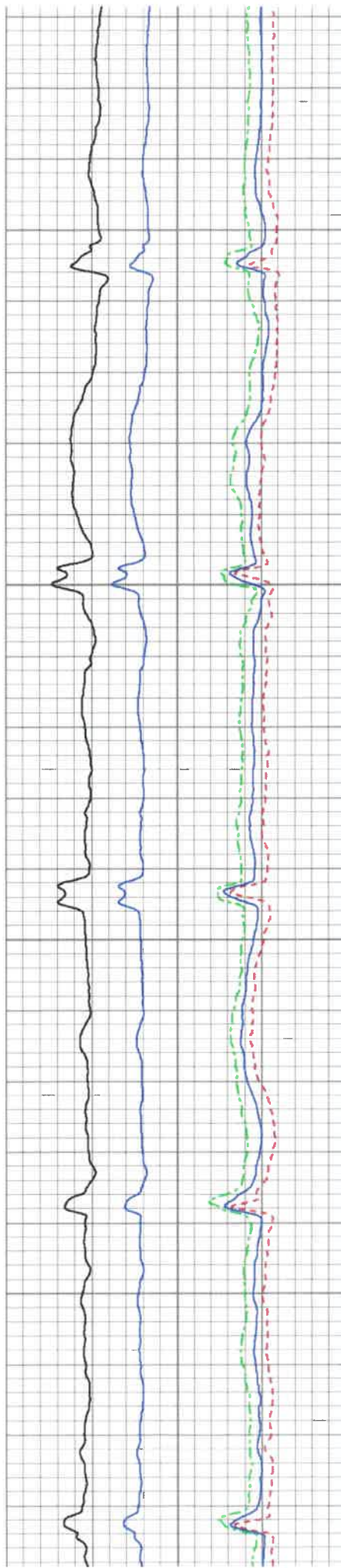


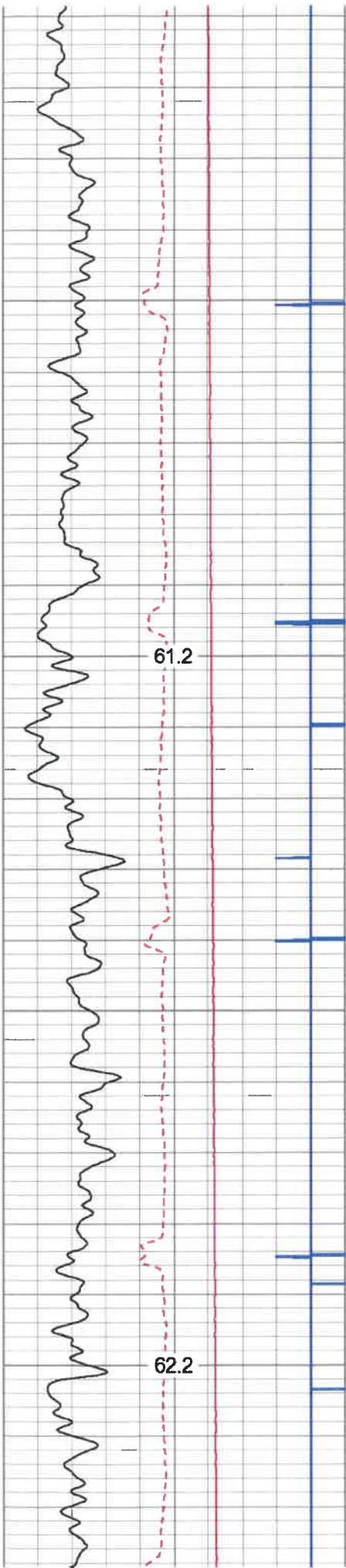
LOGGED UNDER 1500 PSI.



200

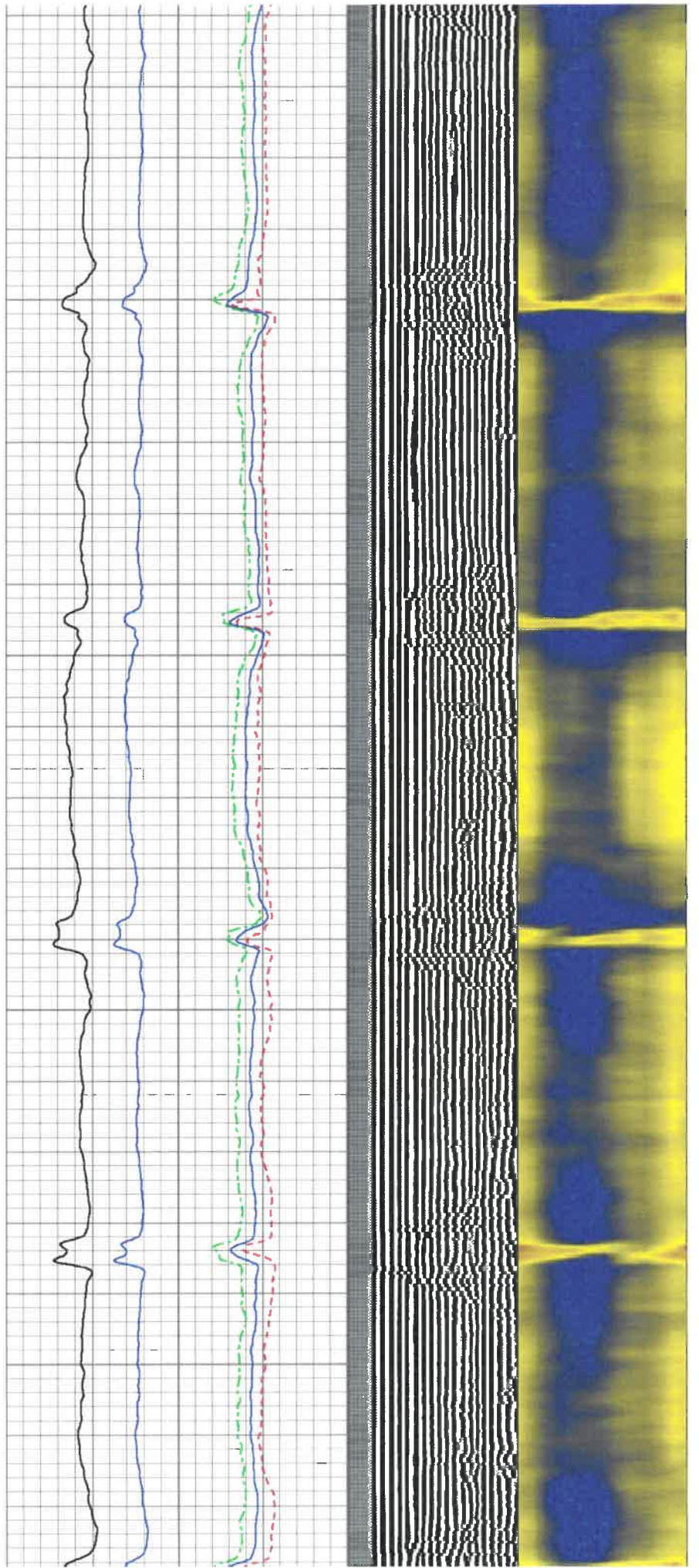
300

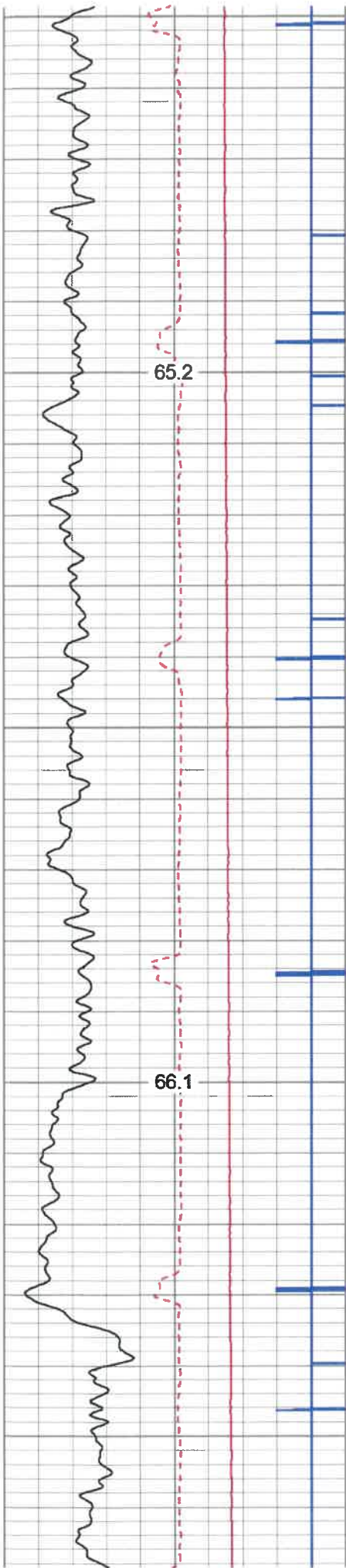




700

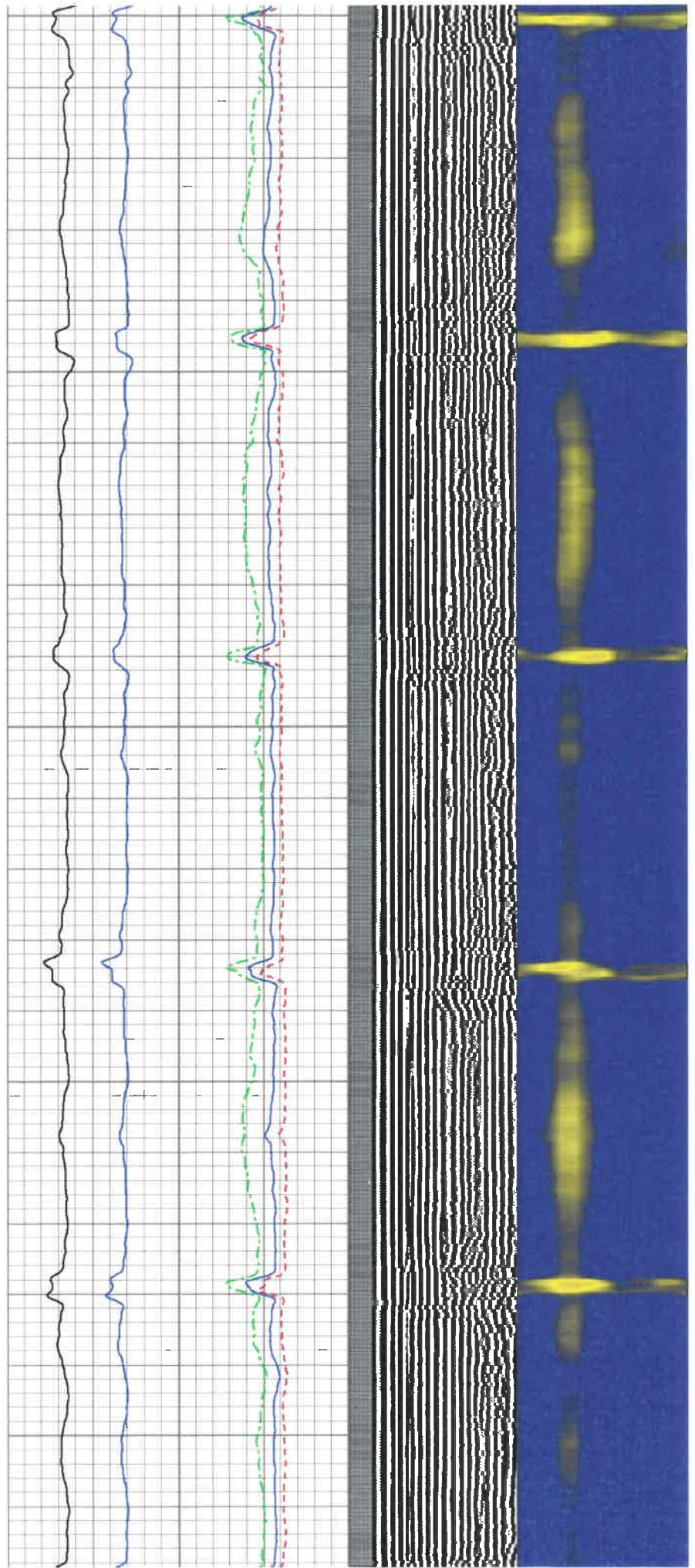
800

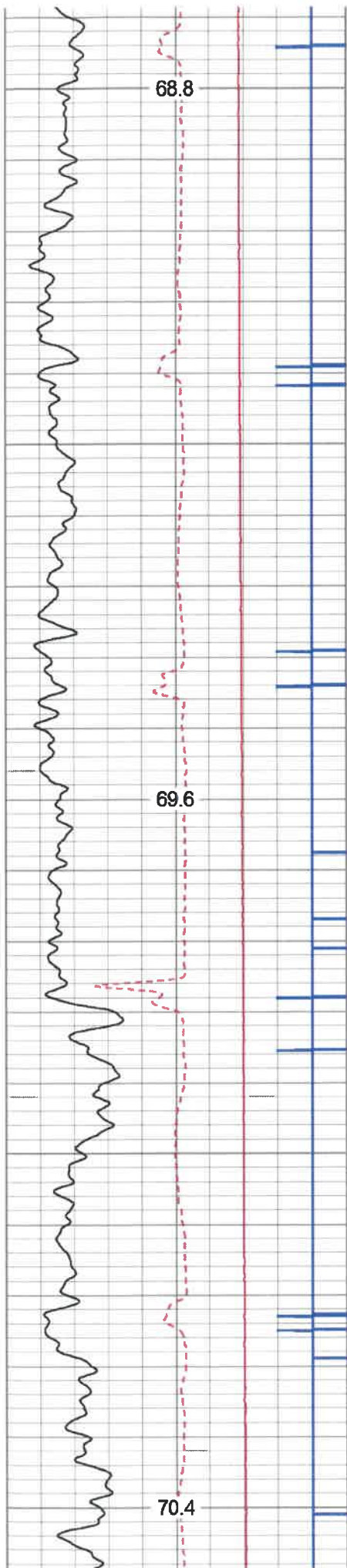




1100

1200

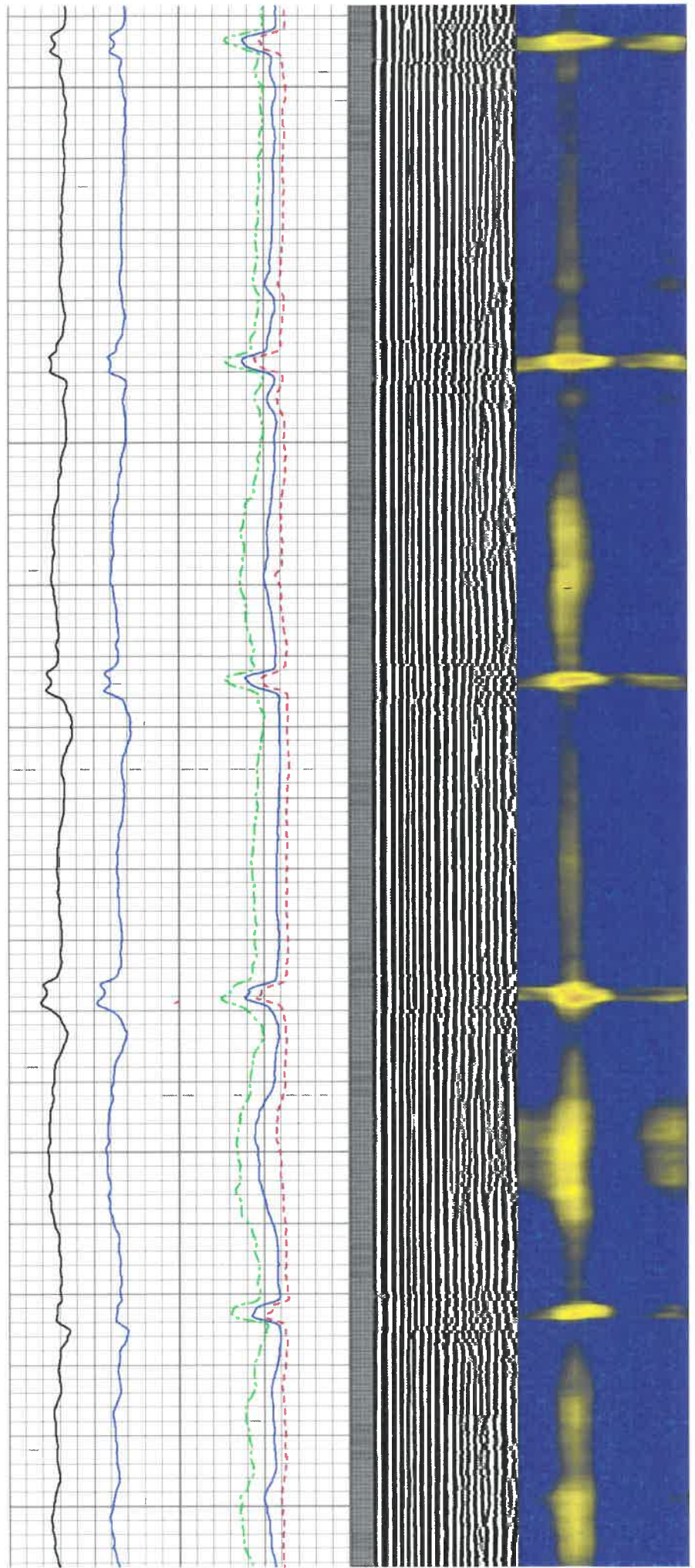


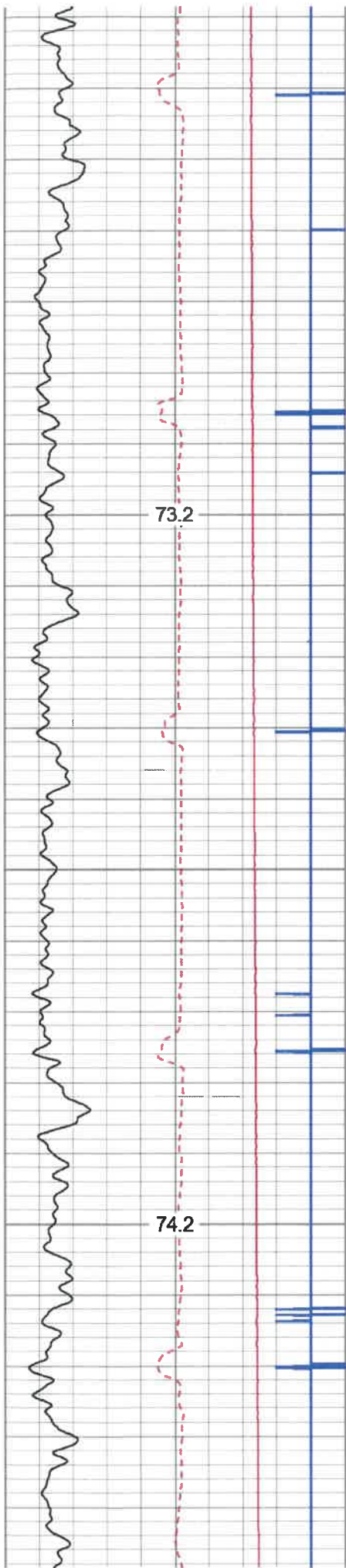


1500

1600

1700



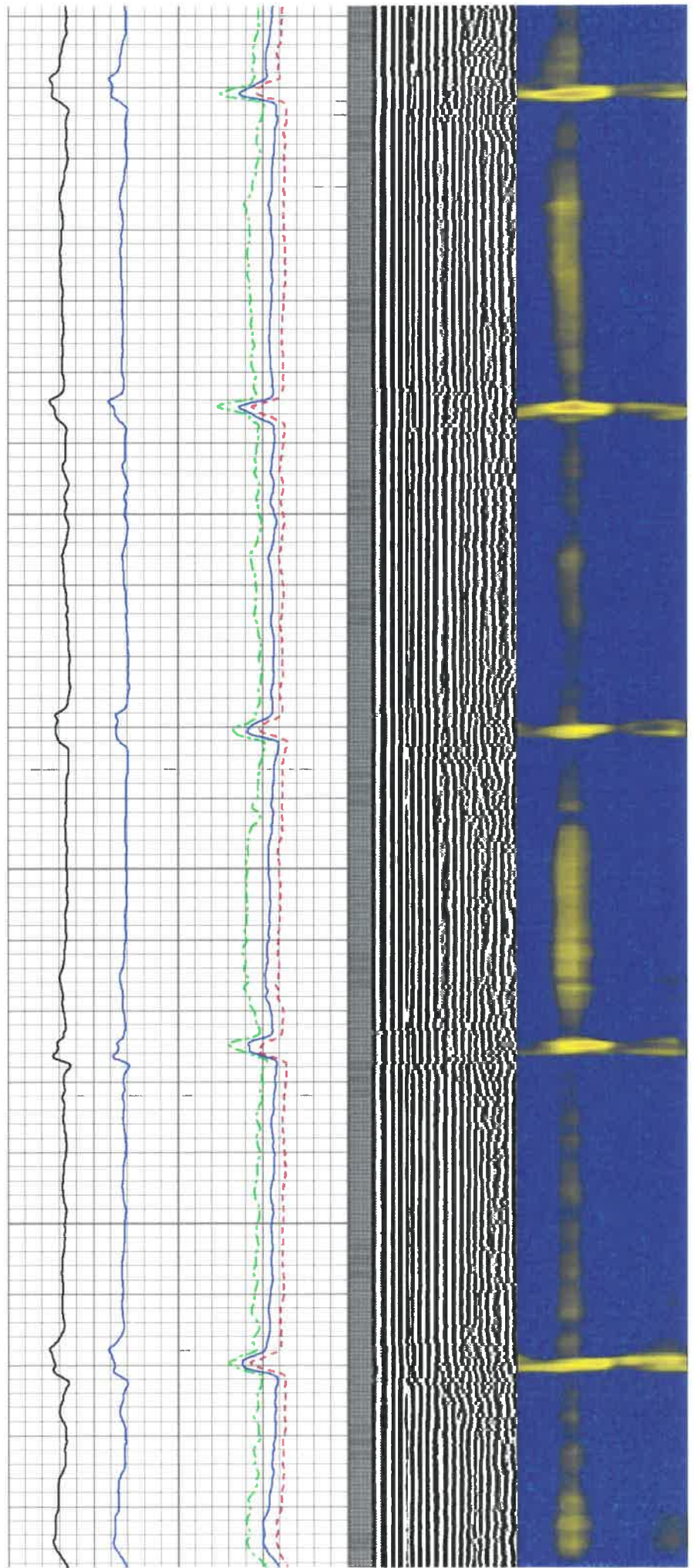


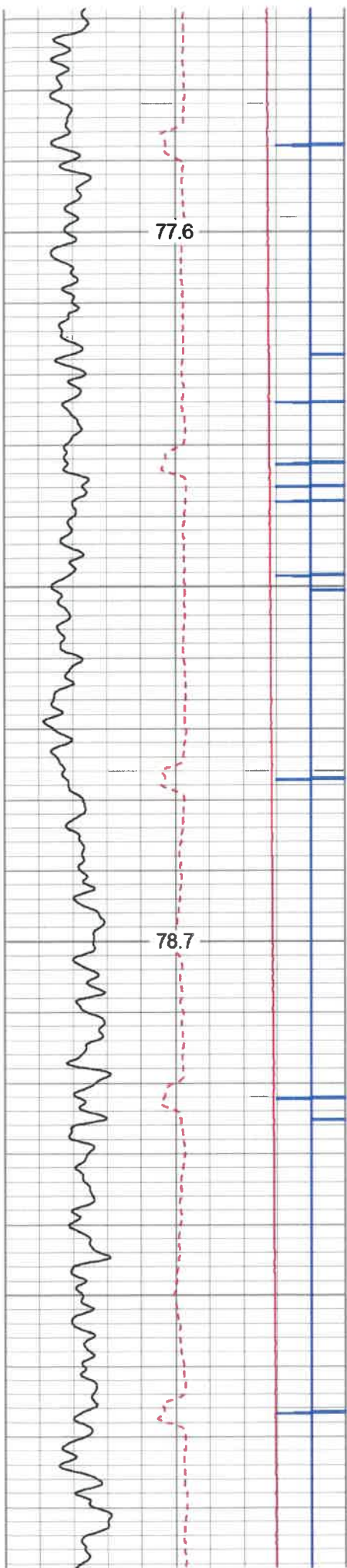
73.2

74.2

2000

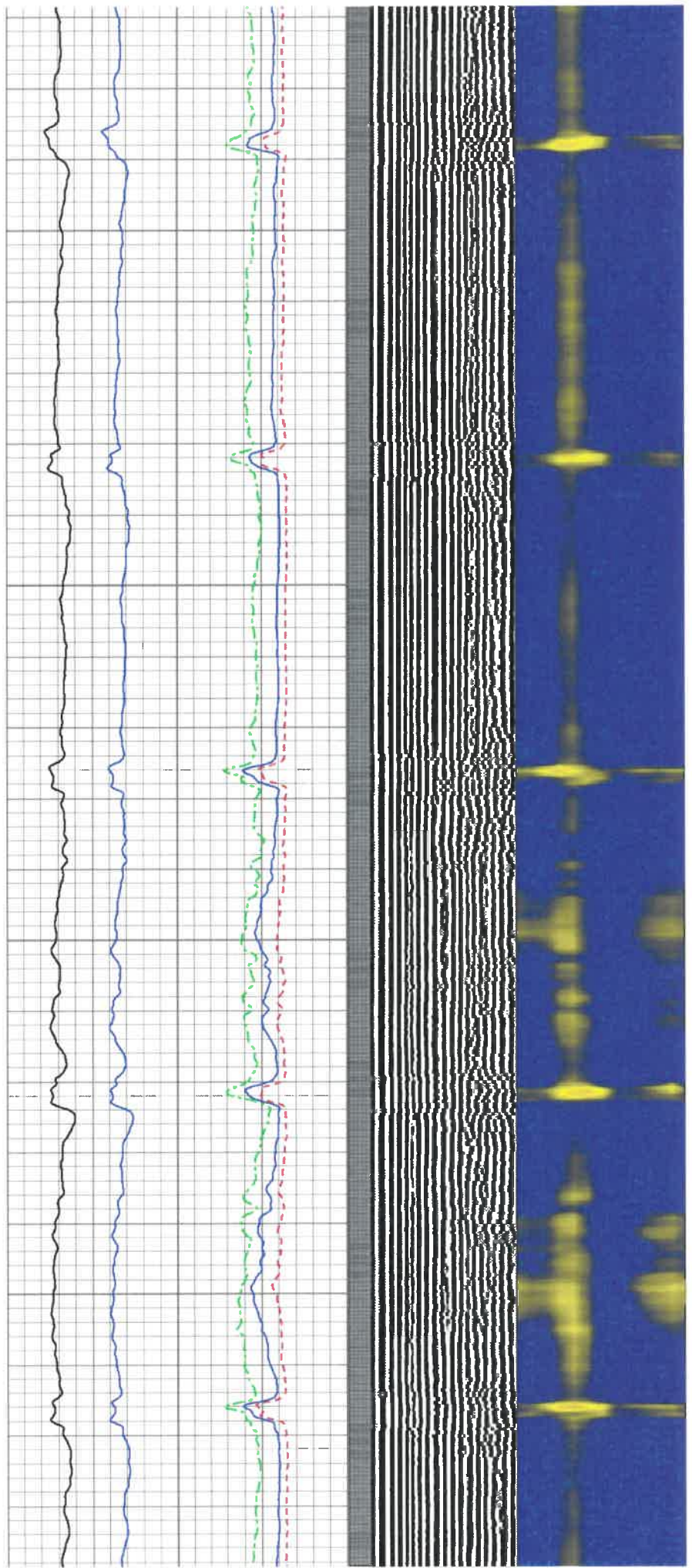
2100

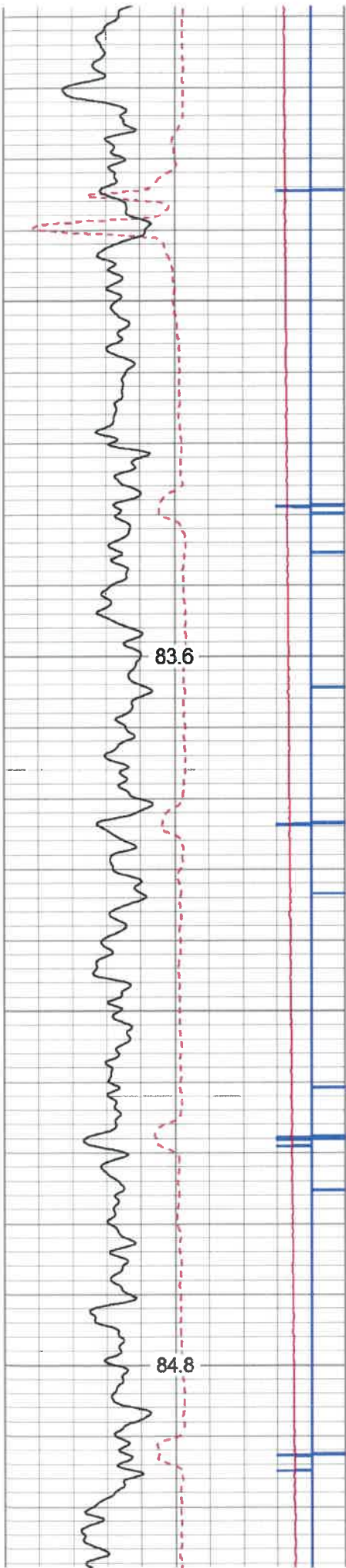




2400

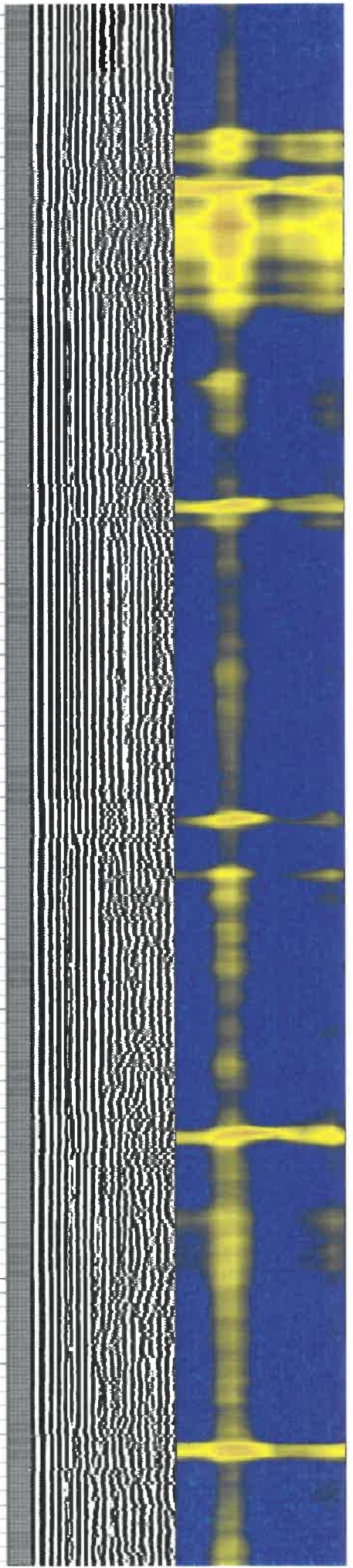
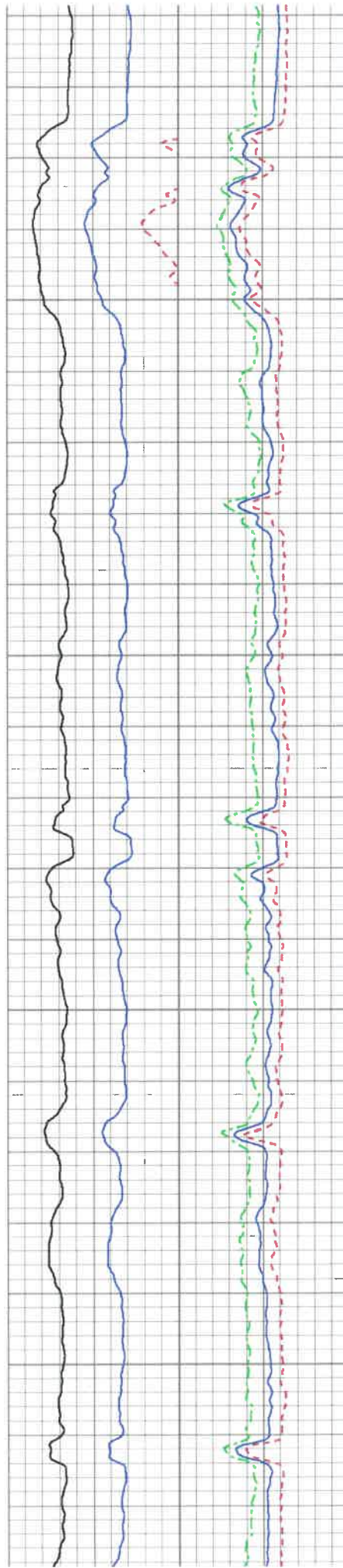
2500

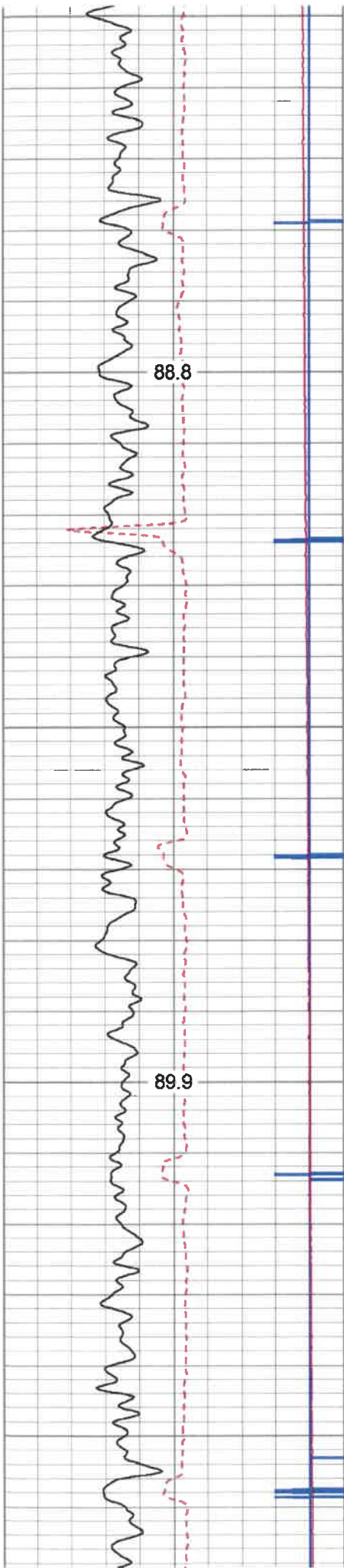




2900

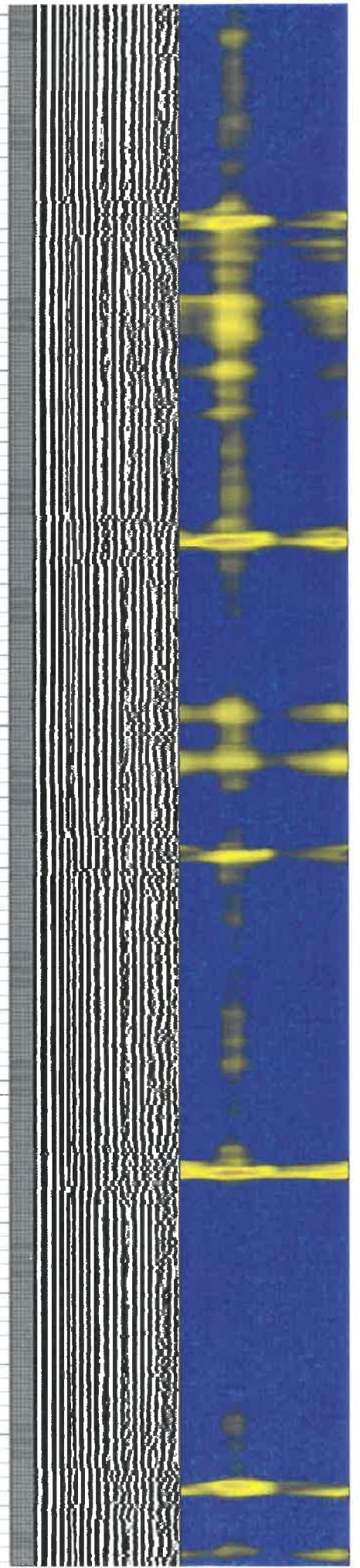
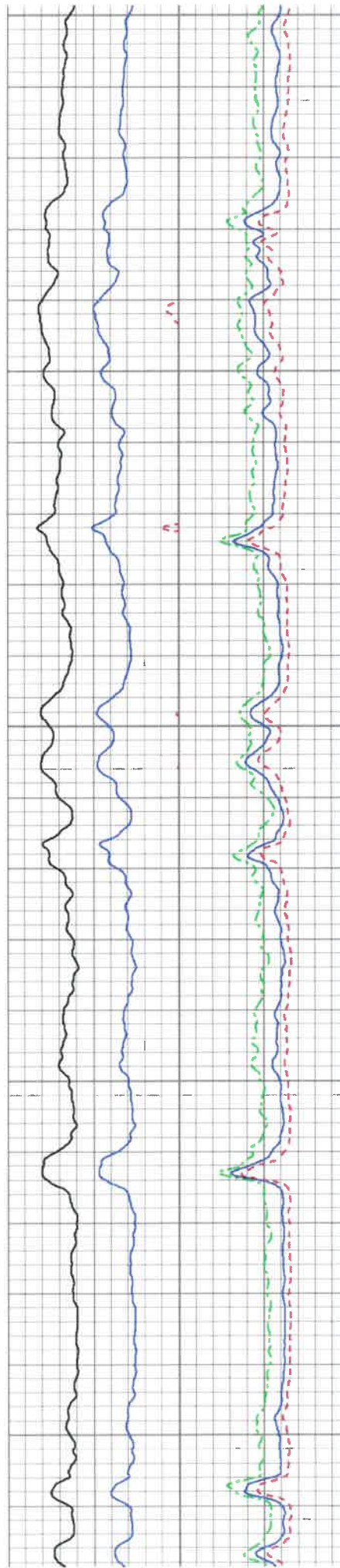
3000

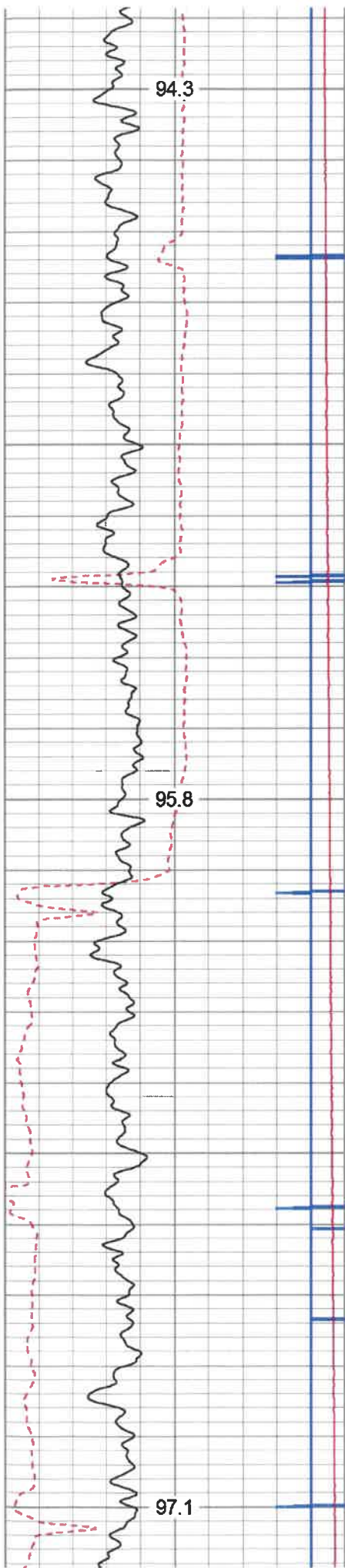




3300

3400

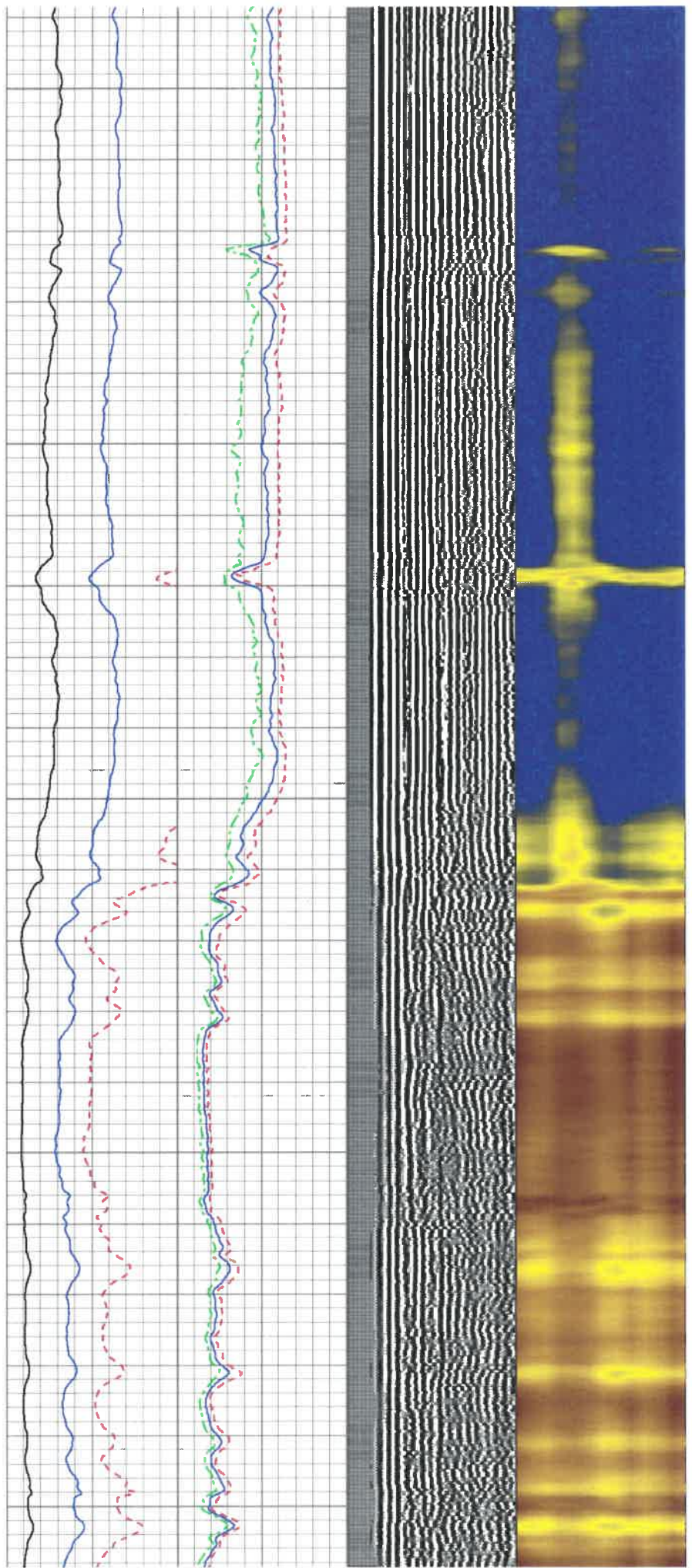


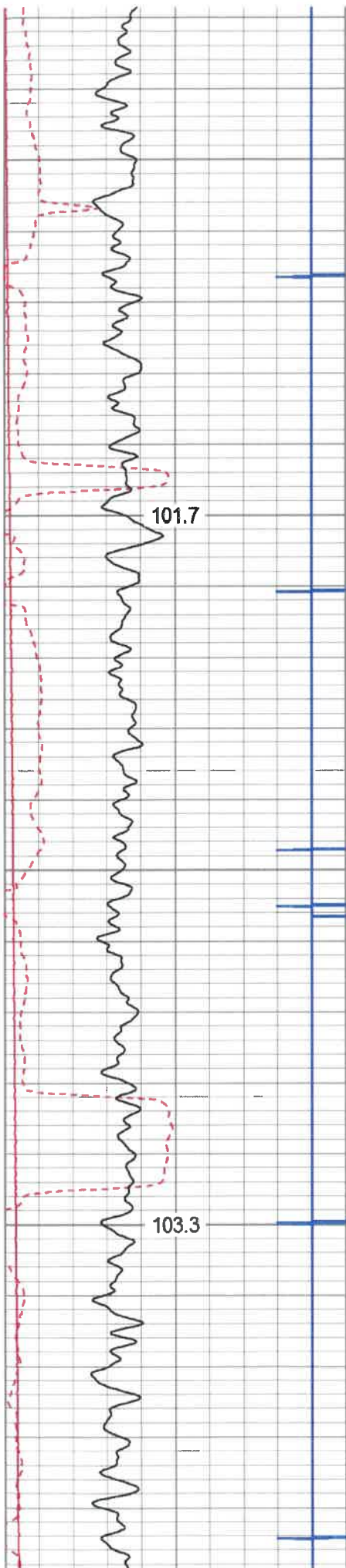


3700

3800

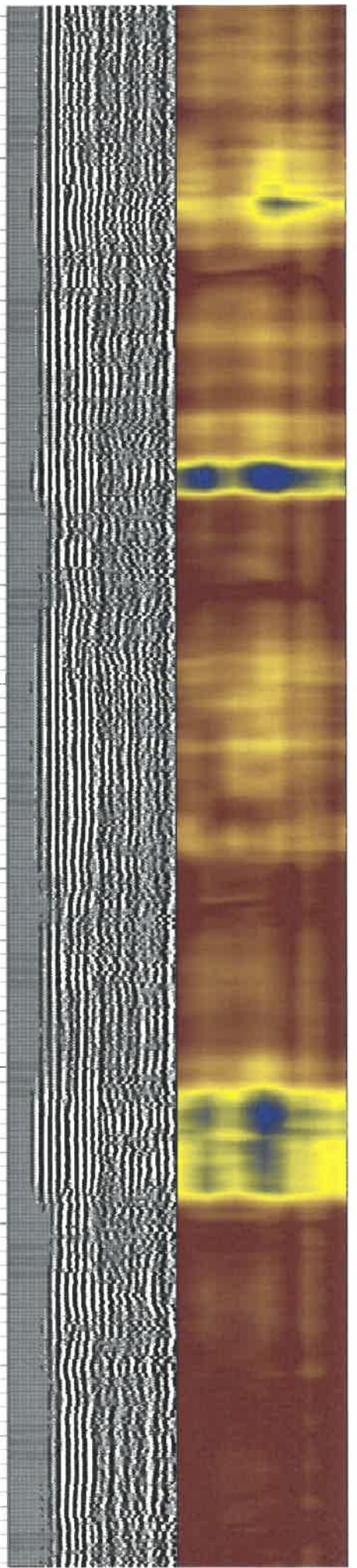
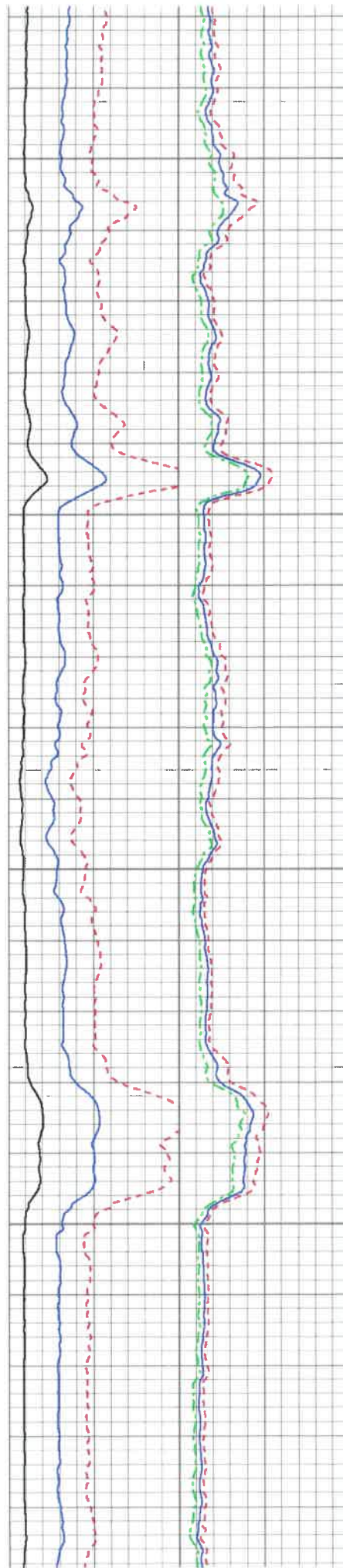
3900

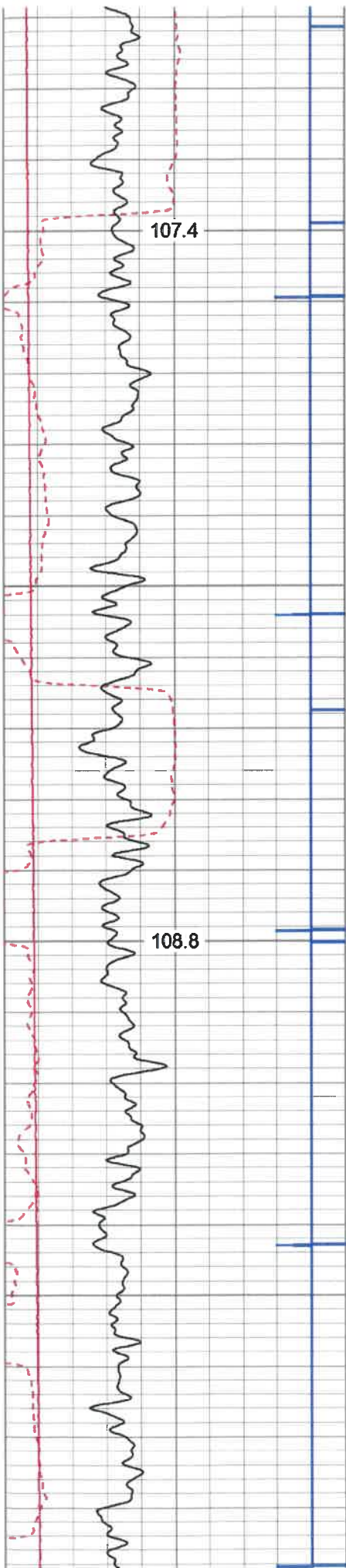




4200

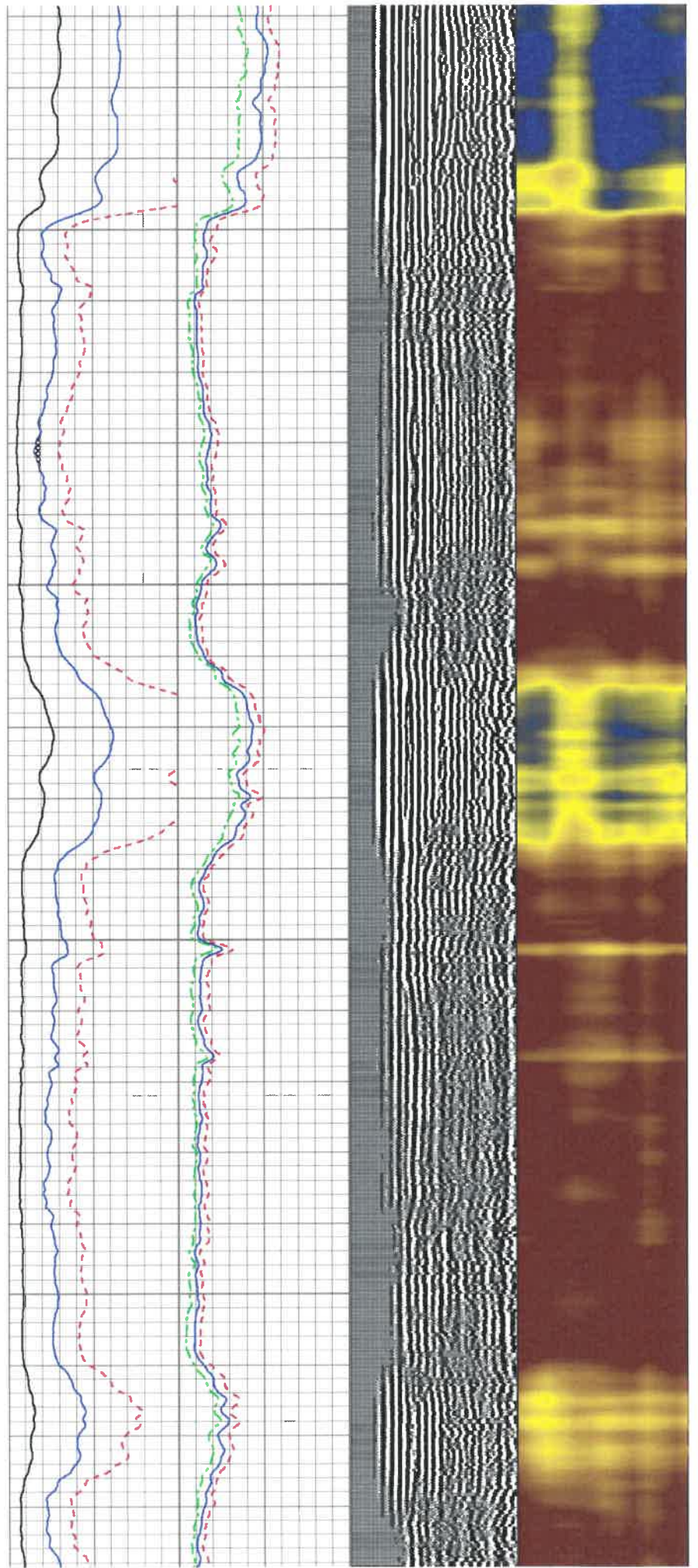
4300

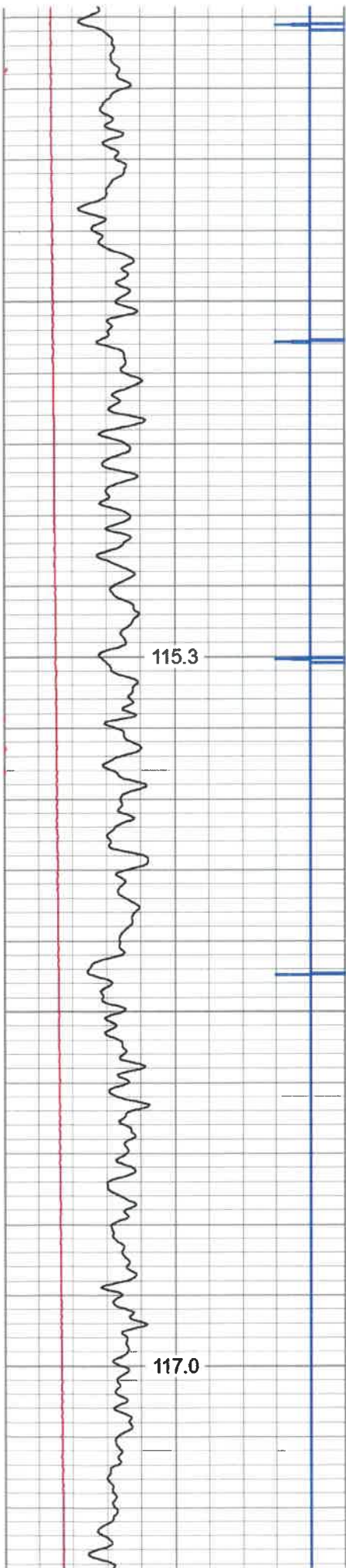




4600

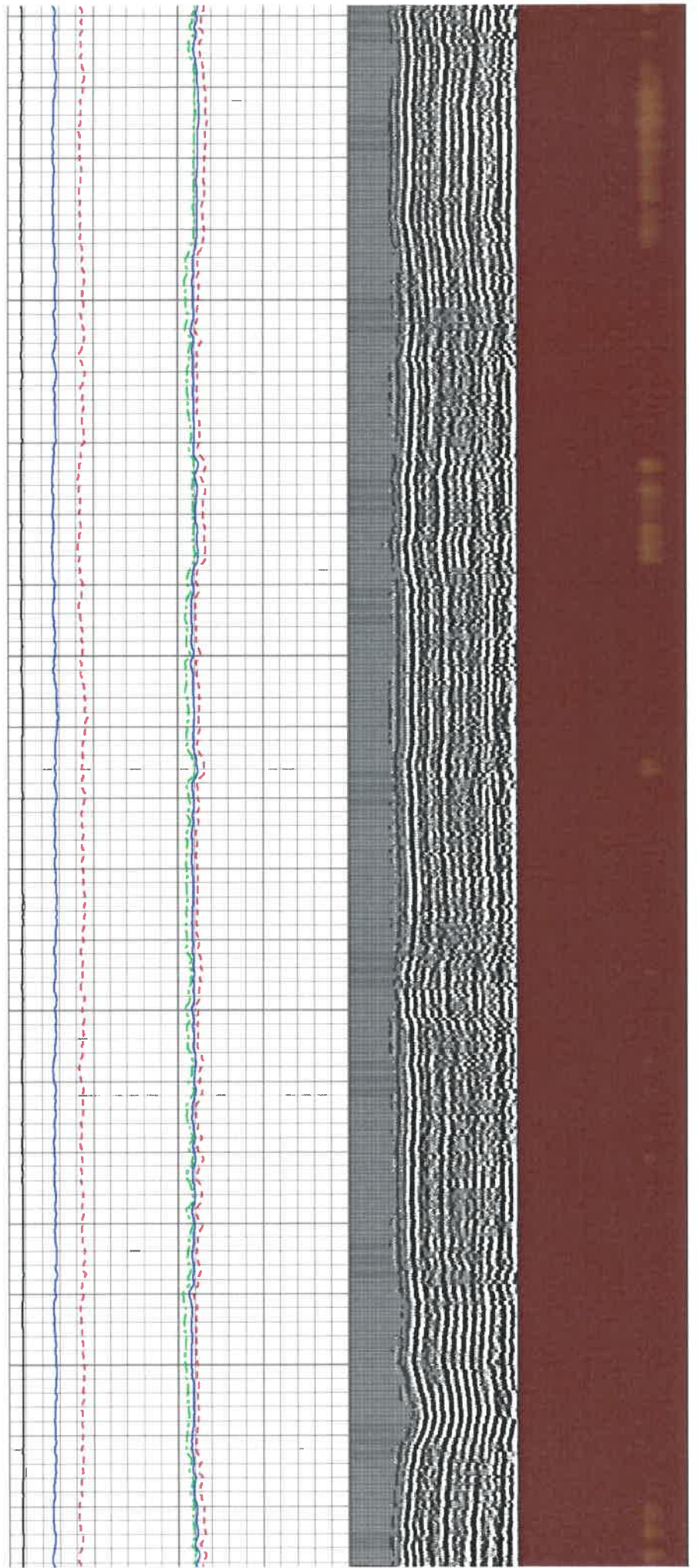
4700

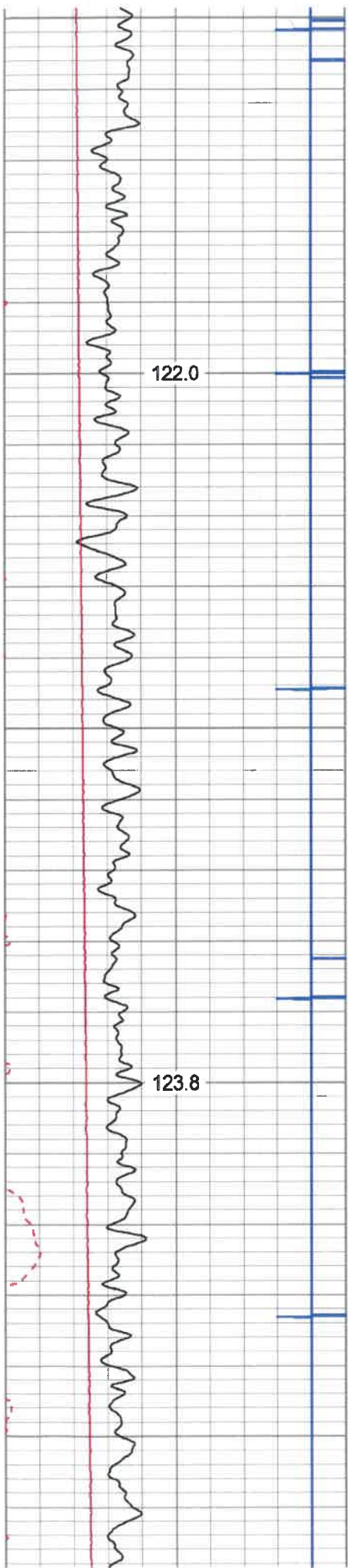




5100

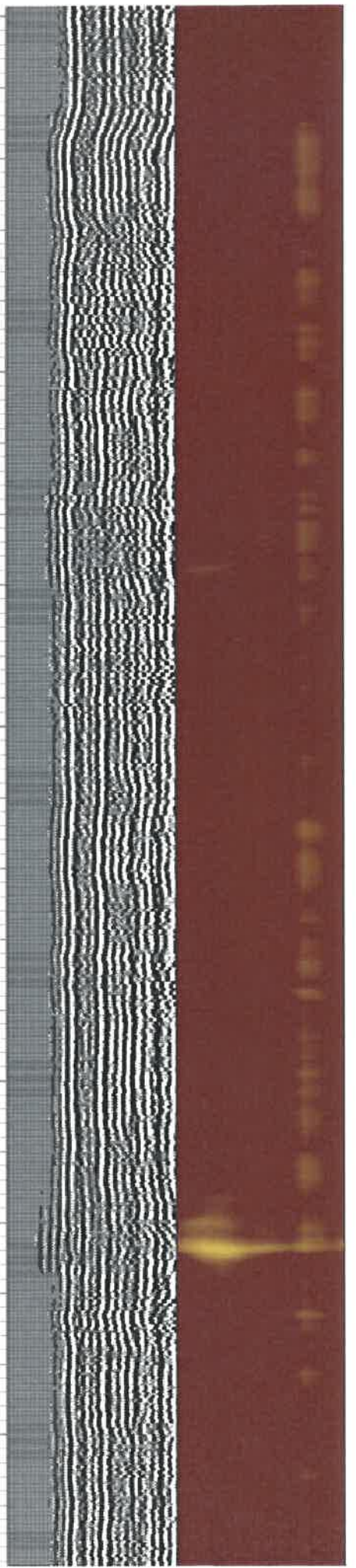
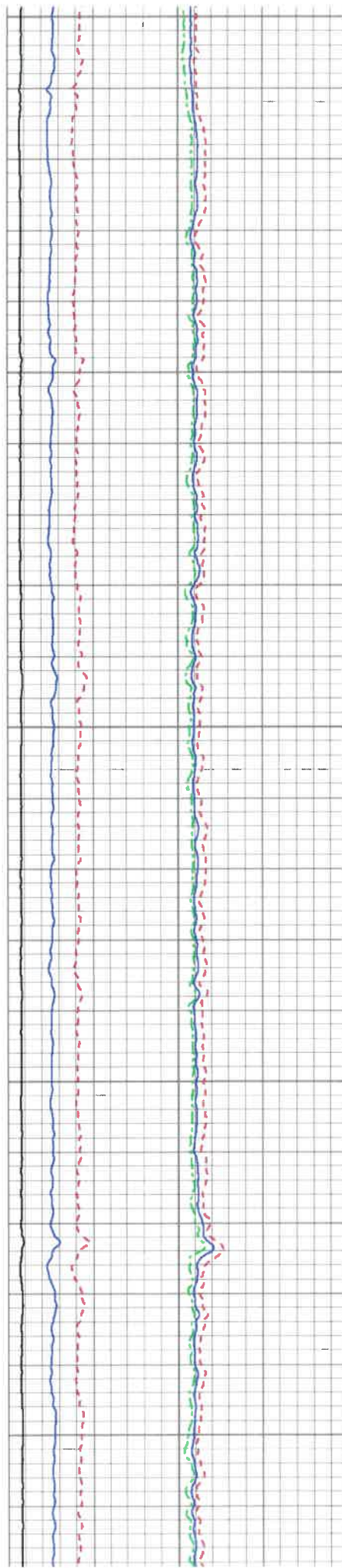
5200

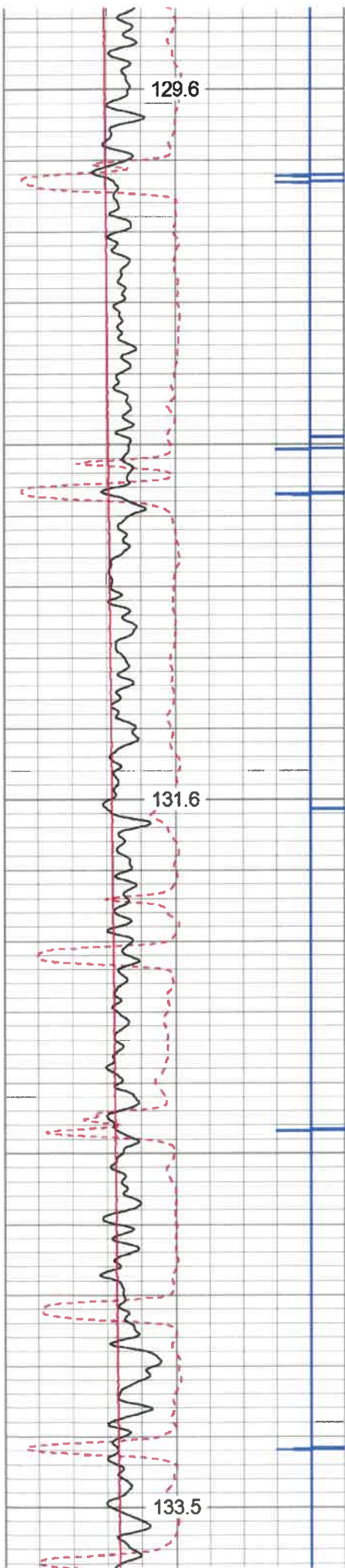




5500

5600

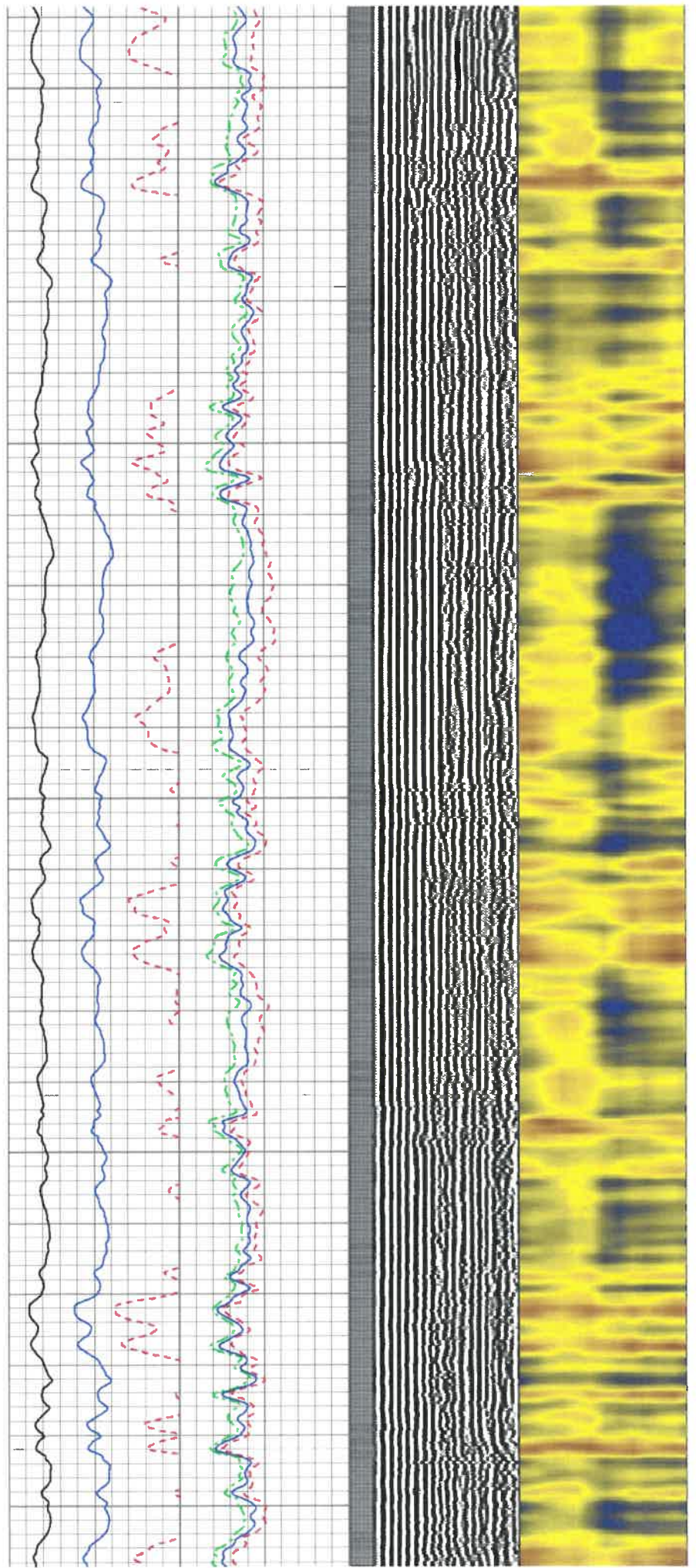


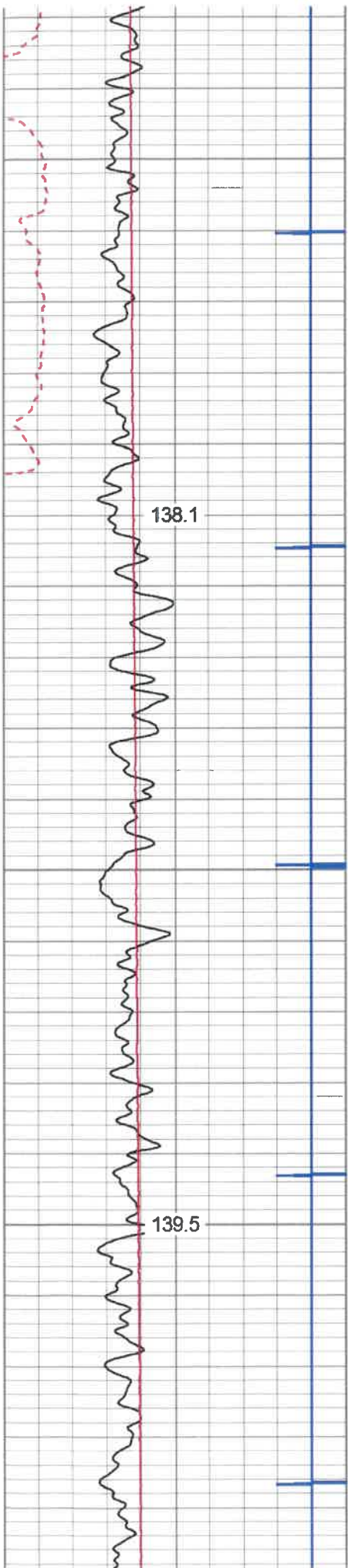


5900

6000

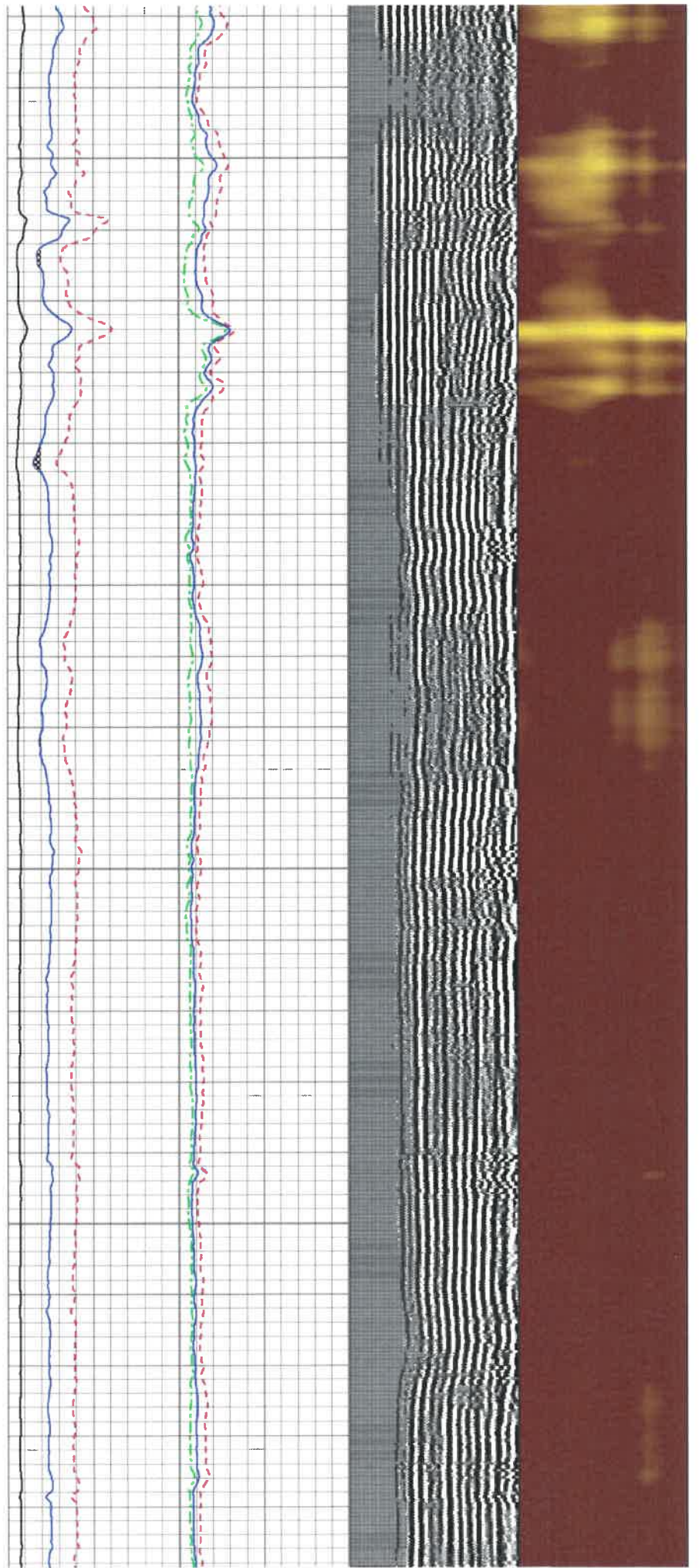
6100

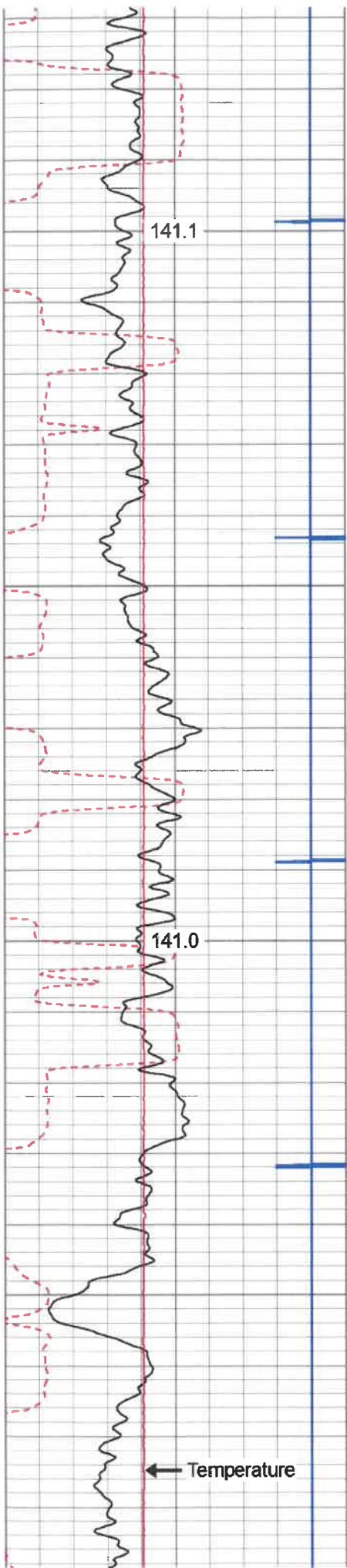




6400

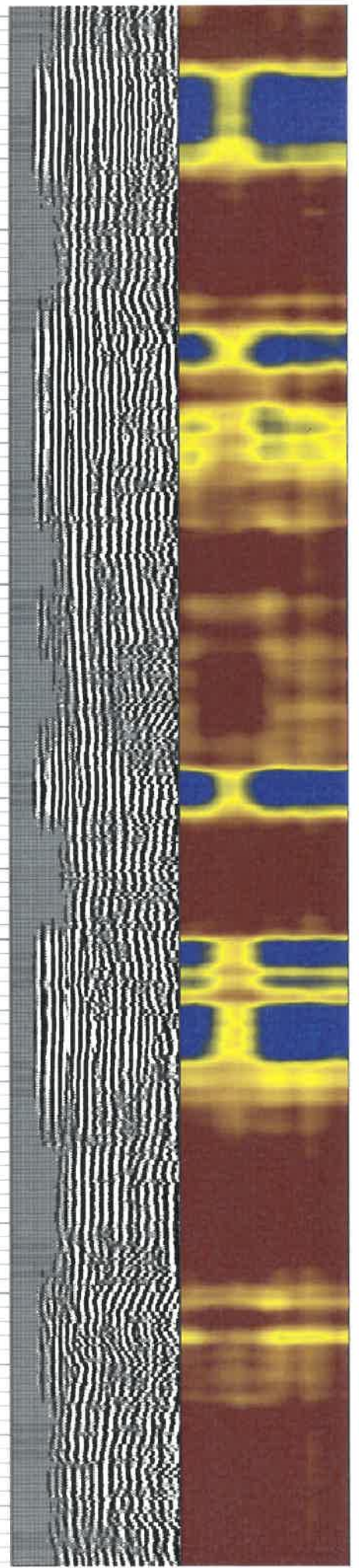
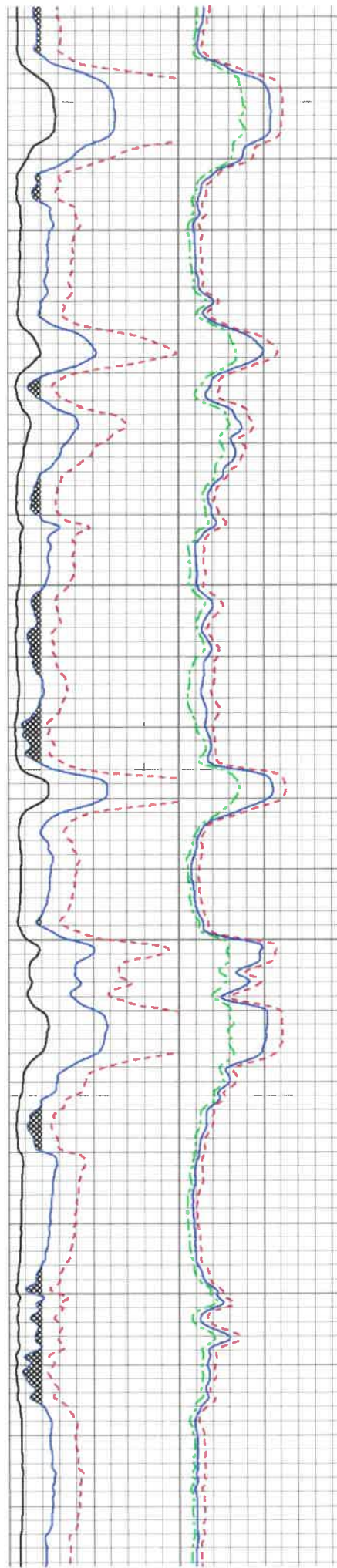
6500

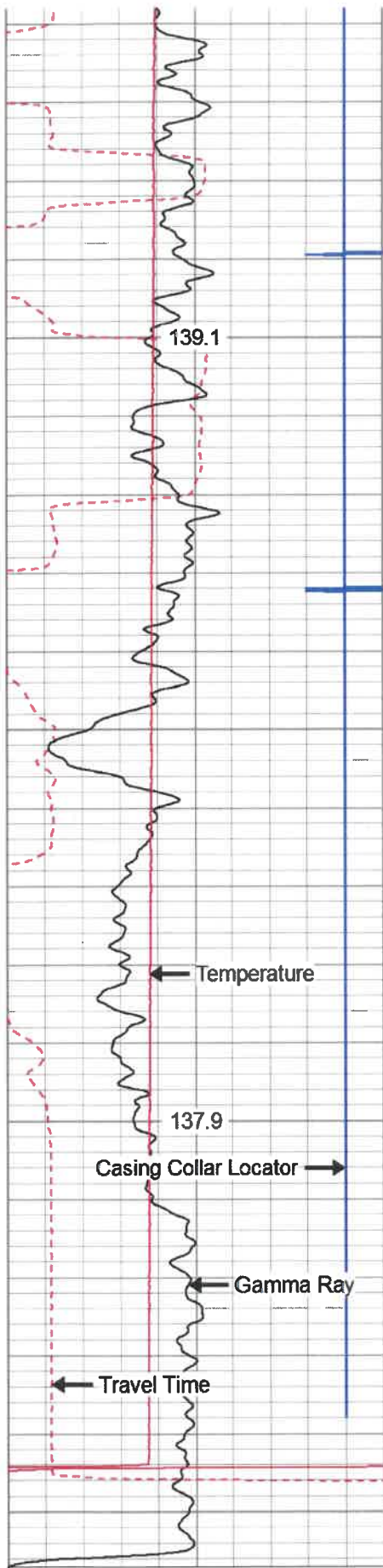




6800

6900

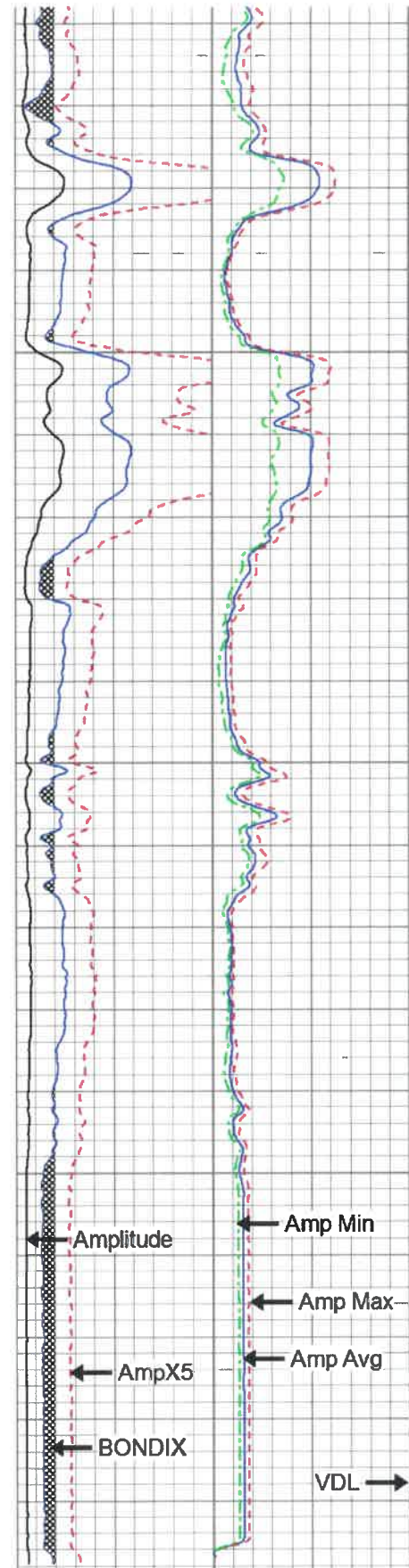




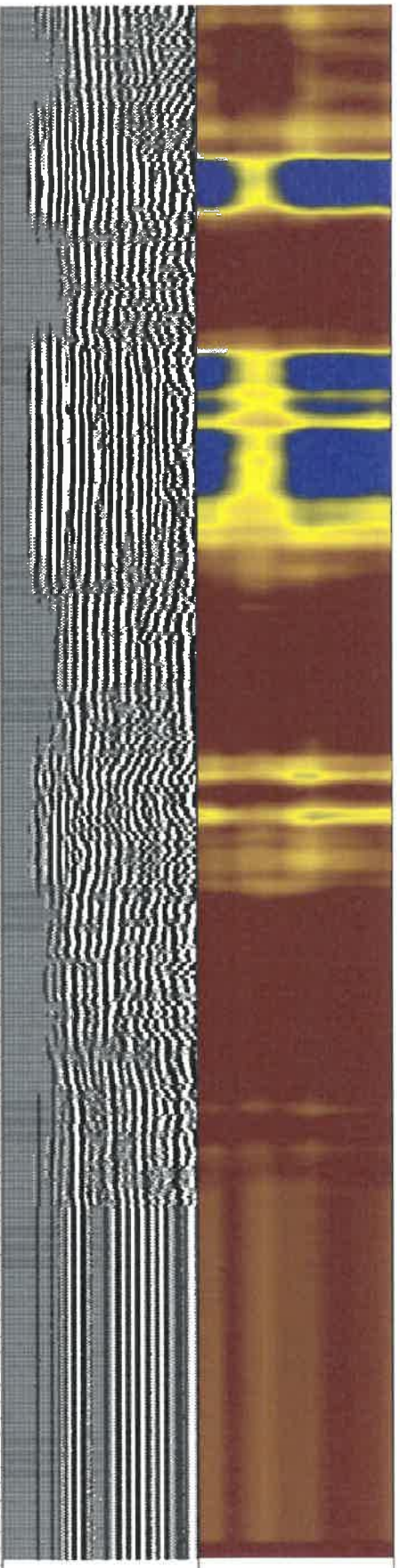
280	Travel Time (usec)	180
9	Casing Collars	-1
0	Gamma Ray	180
0	TEMP (degF)	100

6900

7000



0	Amplitude	0	Amp Avg	150
0	(mV)	100	Amp Max	150
0	AmpX5 (mV)	20	Amp Min	150
1	BONDIX	0		



200	VDL	1200	1	Sector Map	12
			20		80

Dataset: gab 2h.db: field/well/run1/pass3.1
 Total Length: 20.07 ft
 Total Weight: 250.00 lb
 O.D.: 3.25 in

Calibration Report

Database File: E:\gab 2h.db
 Dataset Pathname: pass3.1
 Dataset Creation: Thu Oct 10 20:05:10 2019 by Calc 7.0 B1

Gamma Ray Calibration Report

Serial Number: IPSNO-03
 Tool Model: Tek-Co 2 3/4
 Performed: Wed Oct 09 09:42:39 2019

 Calibrator Value: 1.0

 Background Reading: 0.0 cps
 Calibrator Reading: 1.0 cps

 Sensitivity: 0.3000 /cps

Temperature Calibration Report

Serial Number: IOL40-05
 Tool Model: Tek12
 Performed: Wed Jul 31 10:53:14 2013

	Reference		Reading	
Low Reference:	0.00	degF	0.00	usec
High Reference:	1.00	degF	1.00	usec
Gain:	0.33			
Offset:	0.00			
Delta Spacing	2			



Company ANTERO RESOURCES CORPORATION
 Well GABITALALEK 2H
 Field MARCELLUS
 County TYLER
 State W.V. Country USA