

**RADIAL BOND LOG
GAMMA RAY
VDL,CCL**

Company ANTERO RESOURCES CORPORATION
 Well GROUNDS 2H
 Field MARCELLUS
 County TYLER
 State WV

Company ANTERO RESOURCES CORPORATION
 Well GROUNDS 2H
 Field MARCELLUS
 County TYLER
 State WV

Location: AFE AO8785
 API #: 47095025910000
 Other Services

Permanent Datum SEC TWP RGE Elevation
 Log Measured From GL
 Drilling Measured From

K.B.
D.F.
G.L.

Date	9-6-19	
Run Number	1	
Depth Driller	17652'	
Depth Logger	8536'	
Bottom Logged Interval	8536'	
Top Log Interval	SURFACE	
Open Hole Size	N/A	
Type Fluid	WATER	
Density / Viscosity	N/A	
Max. Recorded Temp.	133.5 DEG	
Estimated Cement Top	2291'	
Time Well Ready	N/A	
Time Logger on Bottom	10:30	
Equipment Number	624874	
Location	BRIDGEPORT	
Recorded By	P DAVIDSON	
Witnessed By	R RIVERA	

Borehole Record			Casing Record				
Run Number	Bit	From	To	Size	Weight	From	To
				13 3/8	54.5	630'	0
				9 5/8	36	2802'	0
				5 1/2	23	17652'	0

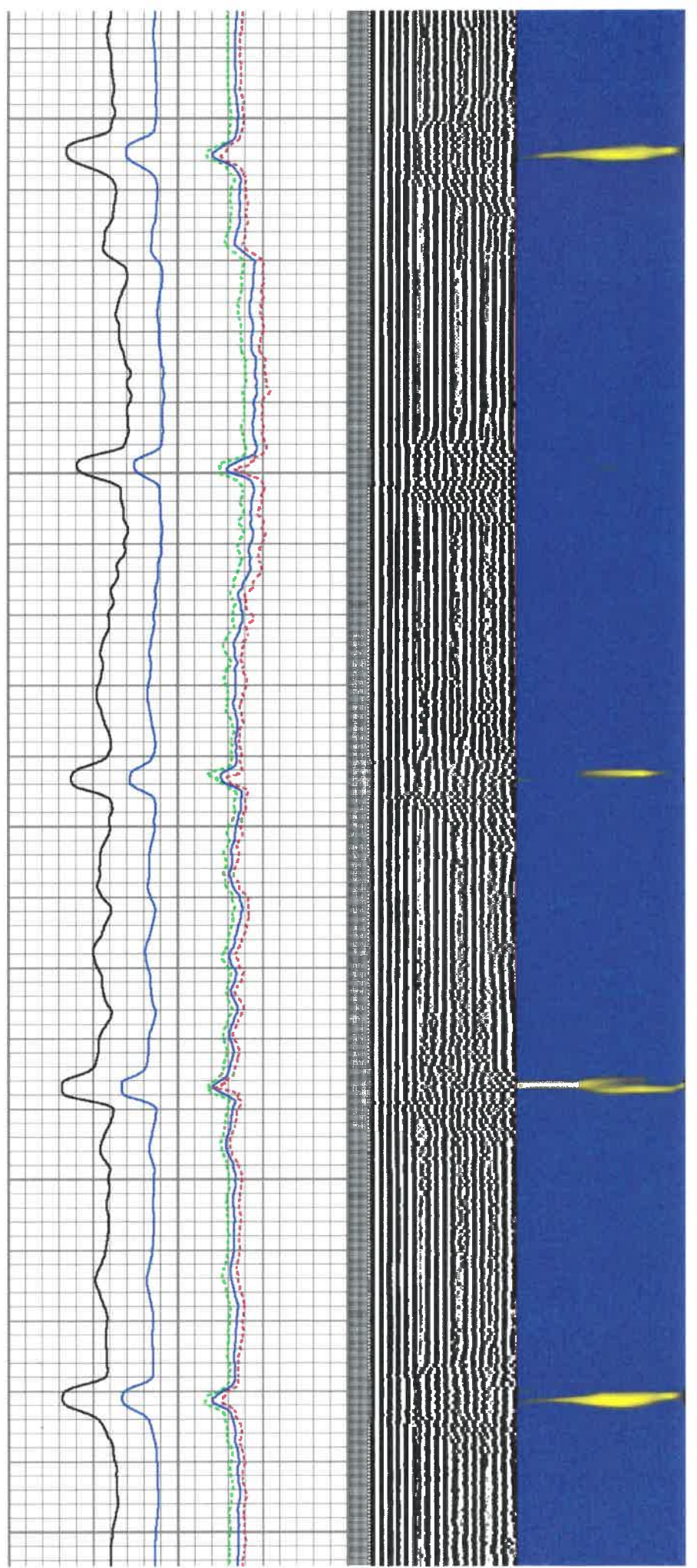
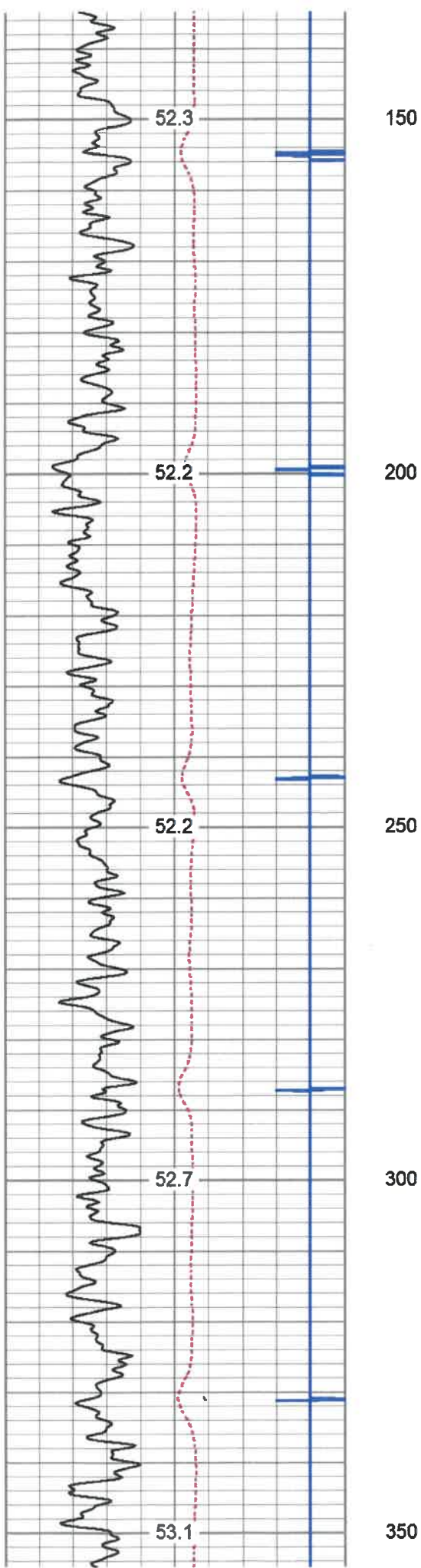
<<< Fold Here >>>

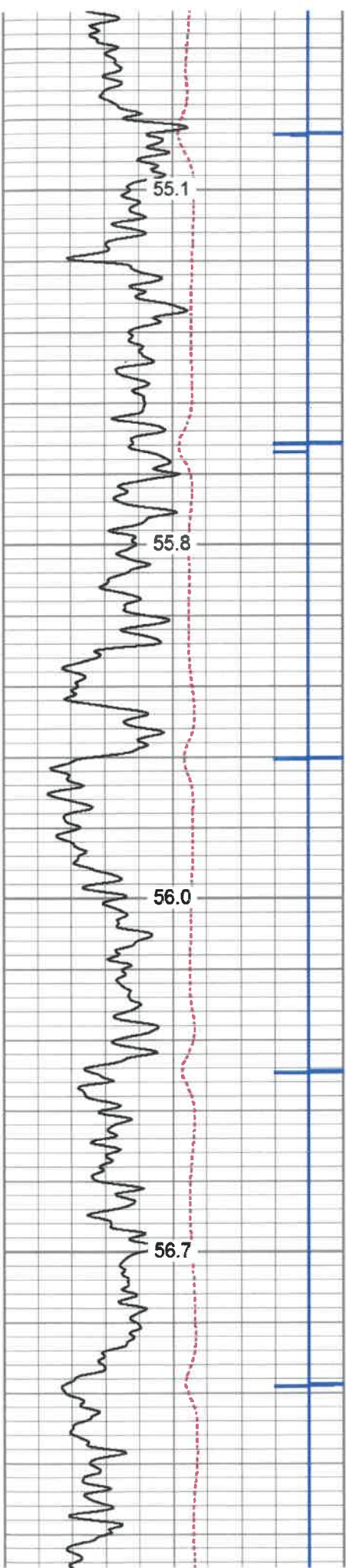
All interpretations are opinions based on inferences from electrical or other measurements and we cannot and do not guarantee the accuracy or correctness of any interpretation, and we shall not, except in the case of gross or willful negligence on our part, be liable or responsible for any loss, costs, damages, or expenses incurred or sustained by anyone resulting from any interpretation made by any of our officers, agents or employees. These interpretations are also subject to our general terms and conditions set out in our current Price Schedule.

Comments

MARKER JOINT @ 5704' -5720'
 LOG TD 6536'
 CEMENT TOP @ 2291'
 LOG RAN UNDER 1500 PSI

THANK YOU FOR CHOOSING KLX ENERGY



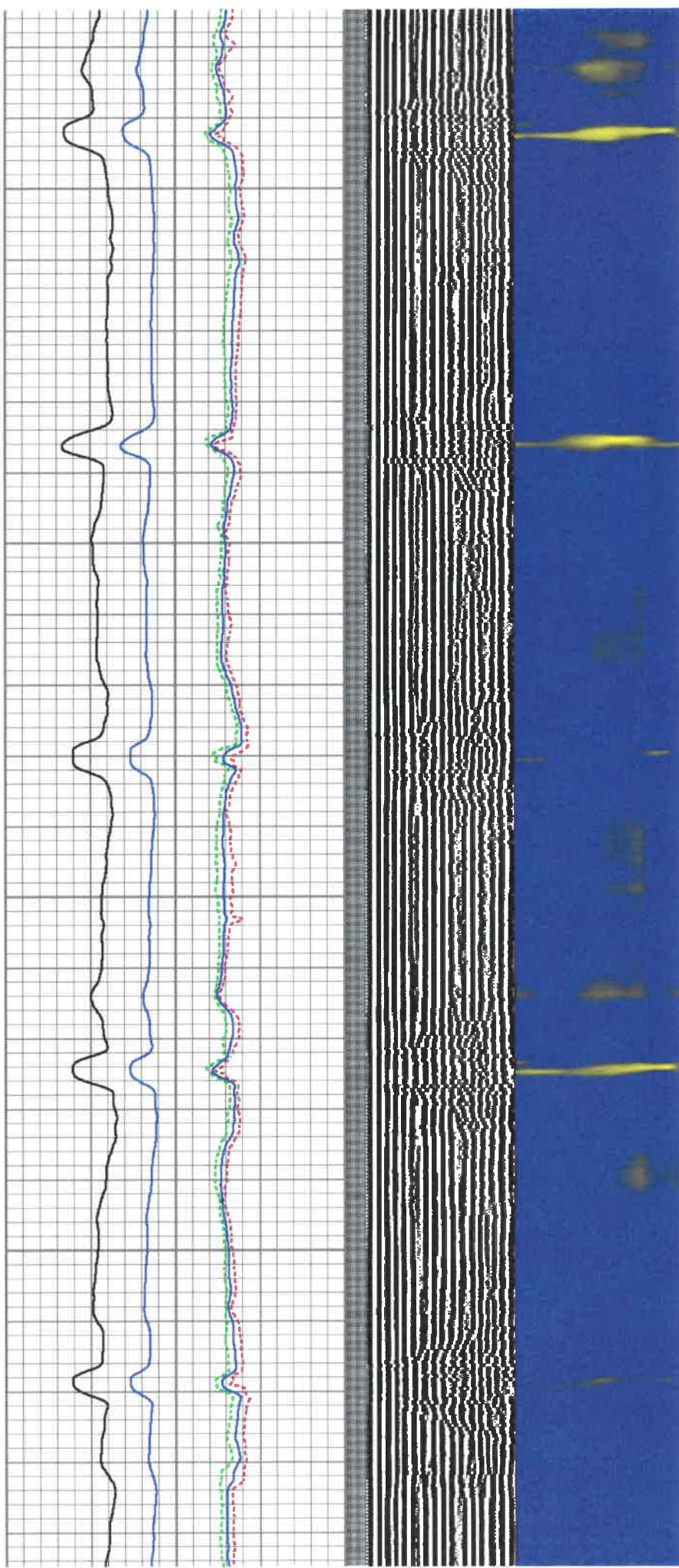


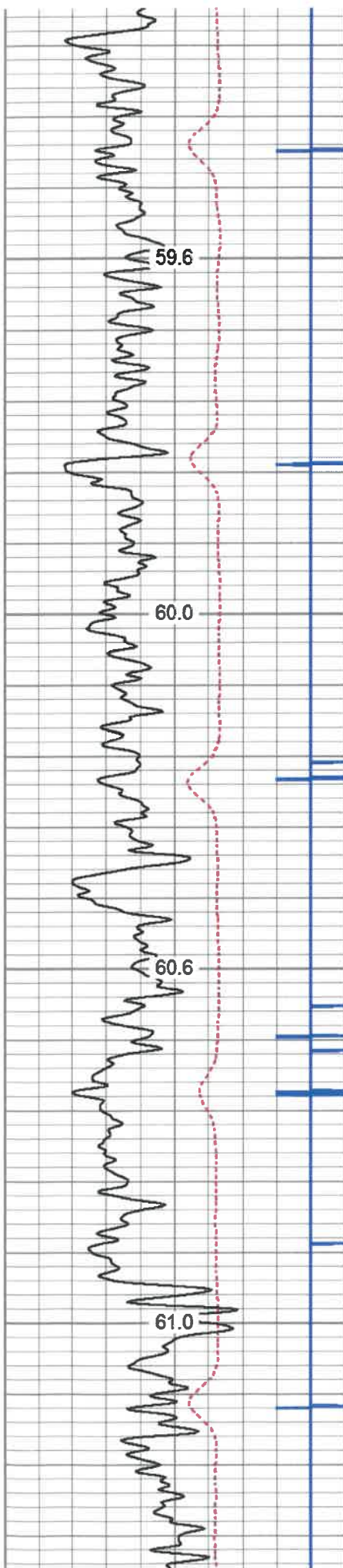
600

650

700

750



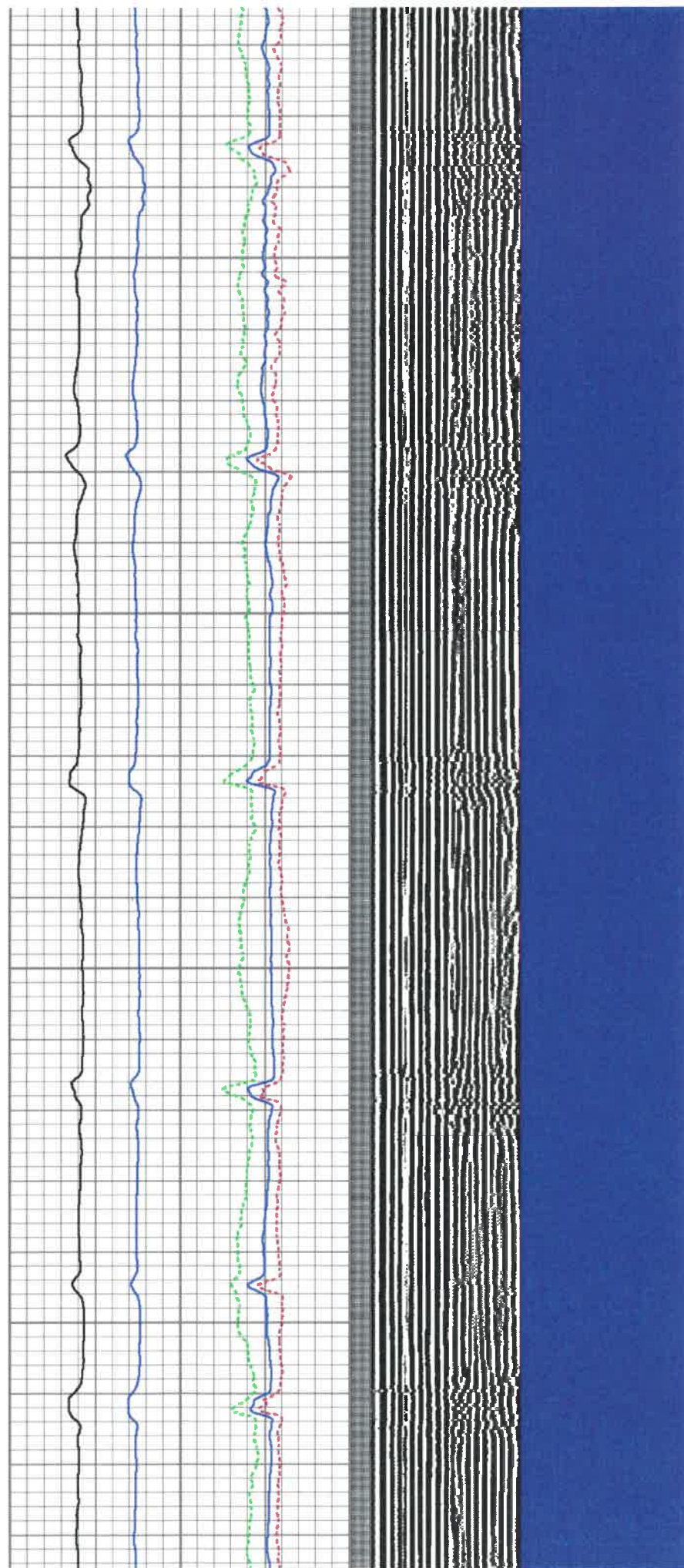


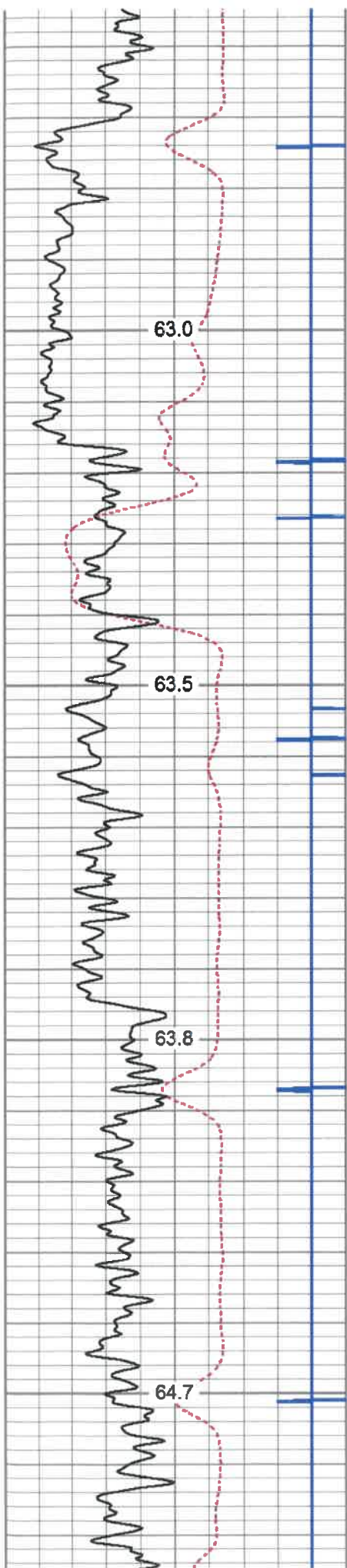
1050

1100

1150

1200



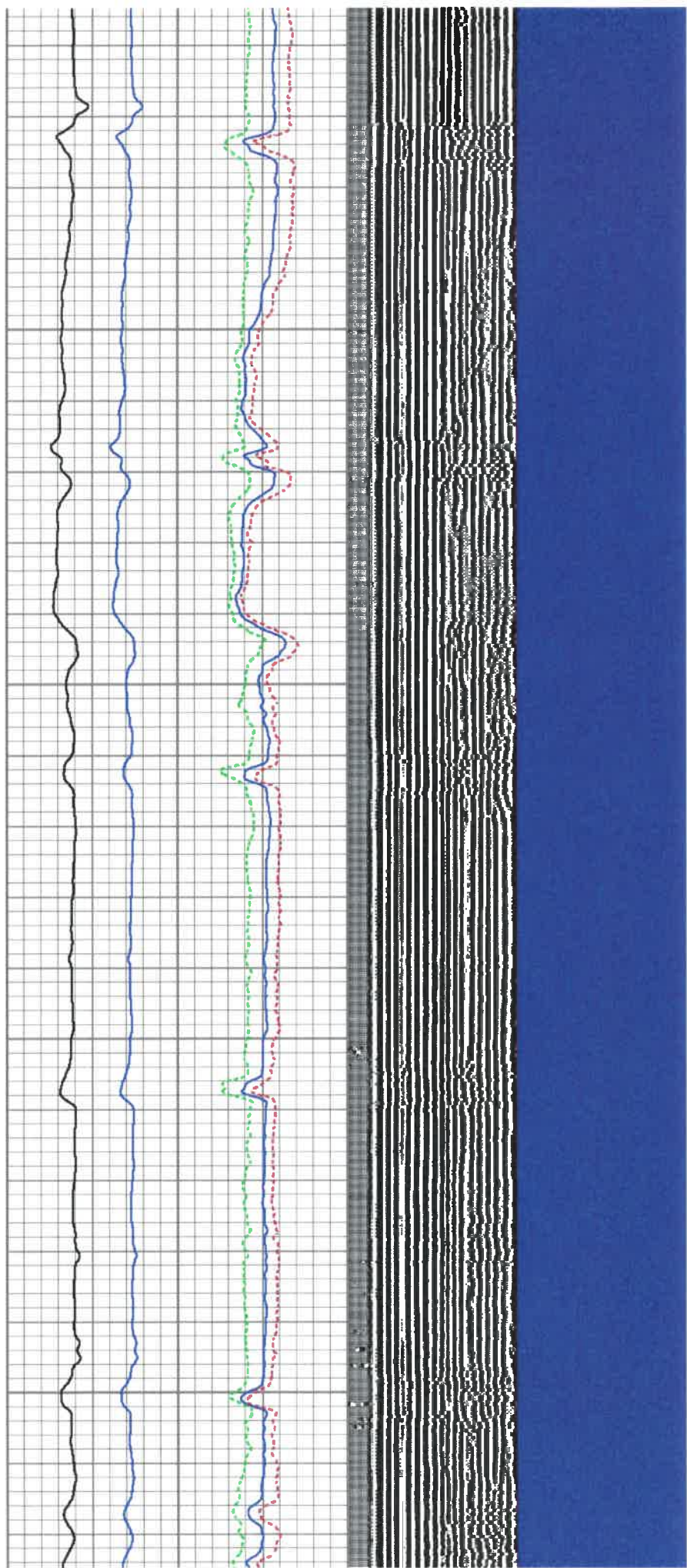


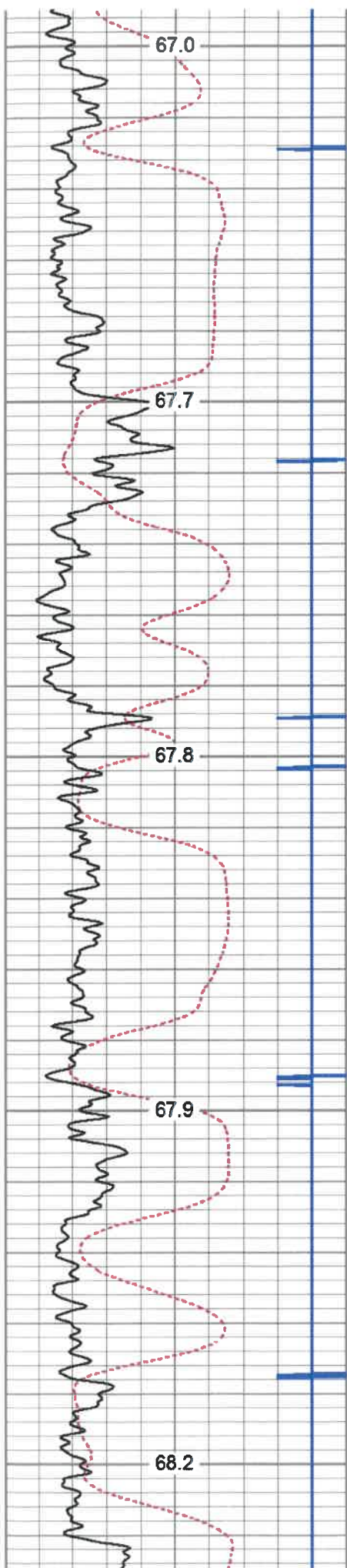
1500

1550

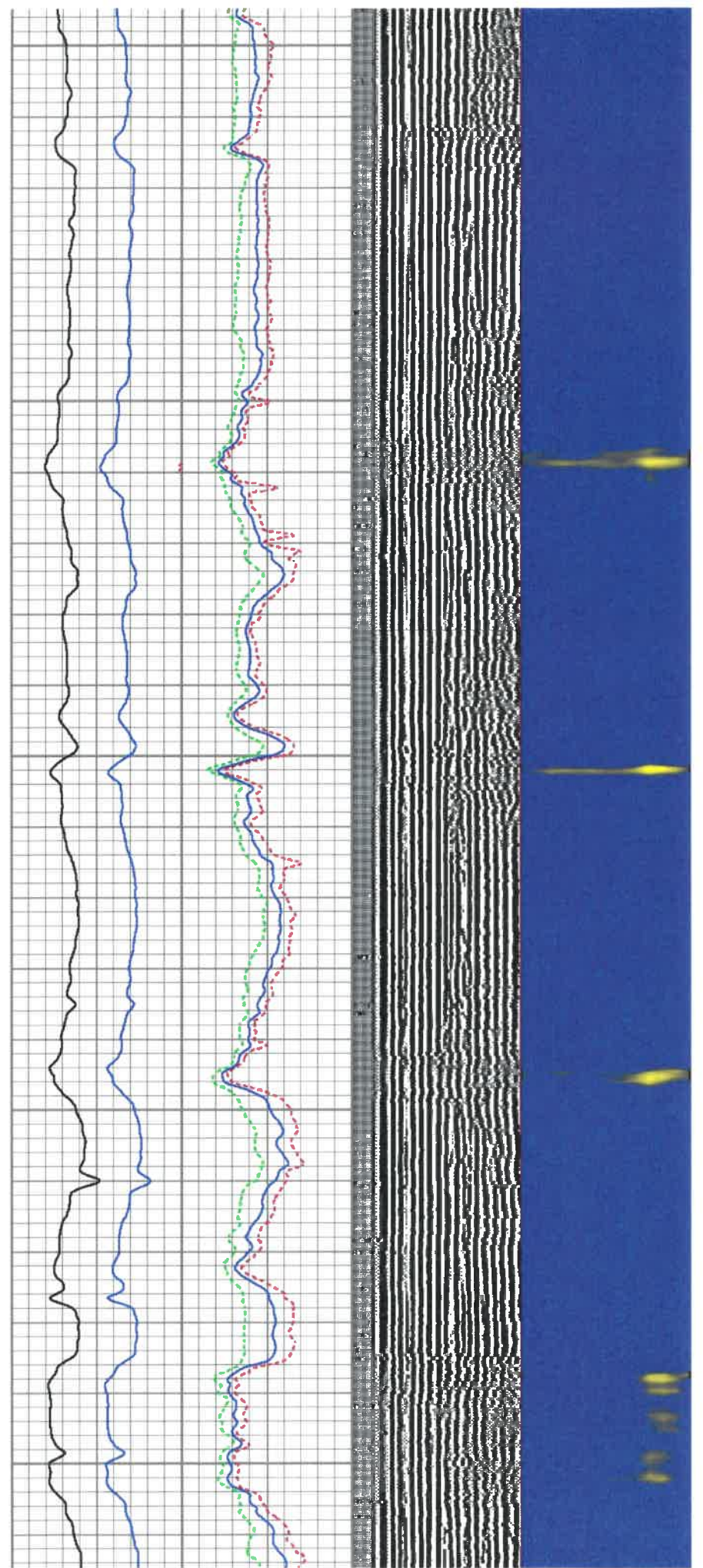
1600

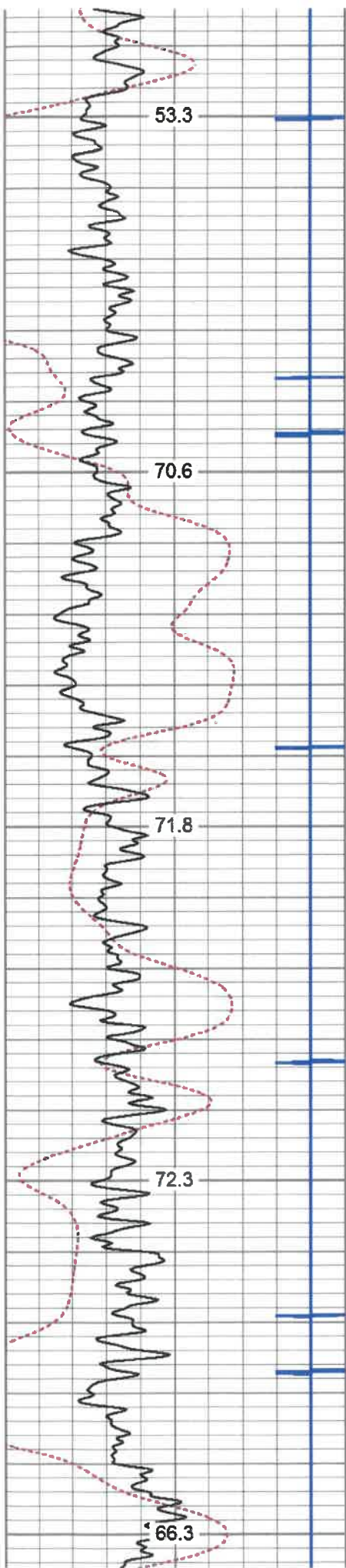
1650



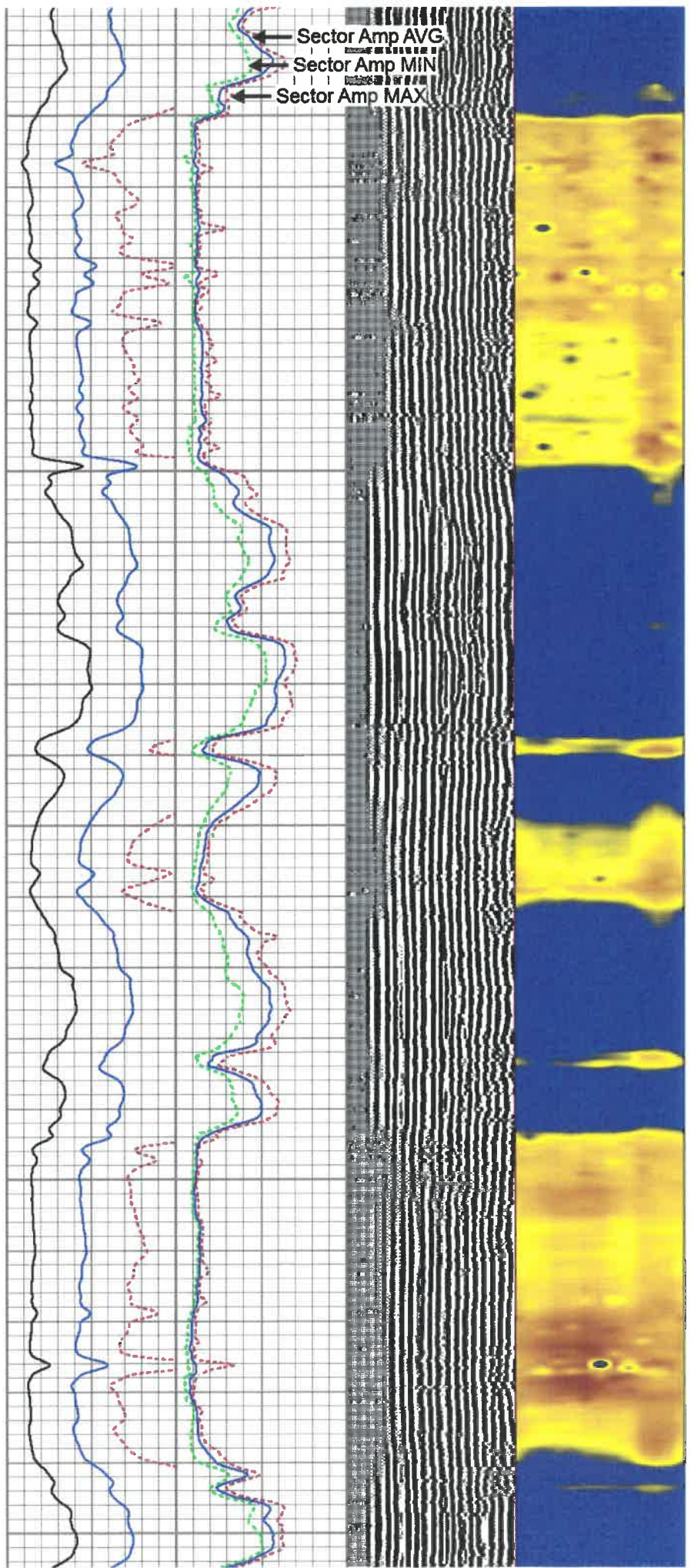


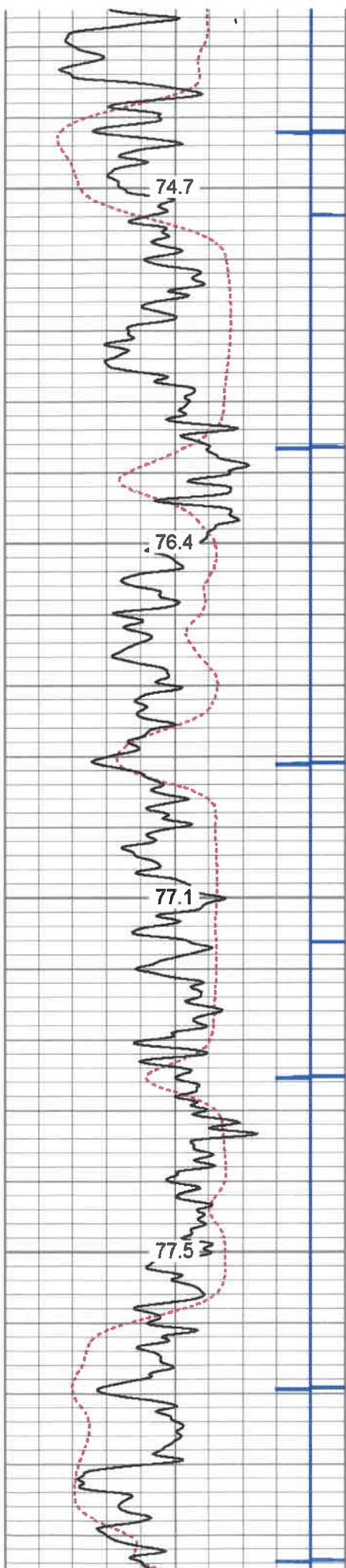
1900
1950
2000
2050
2100





2350
2400
2450
2500
2550



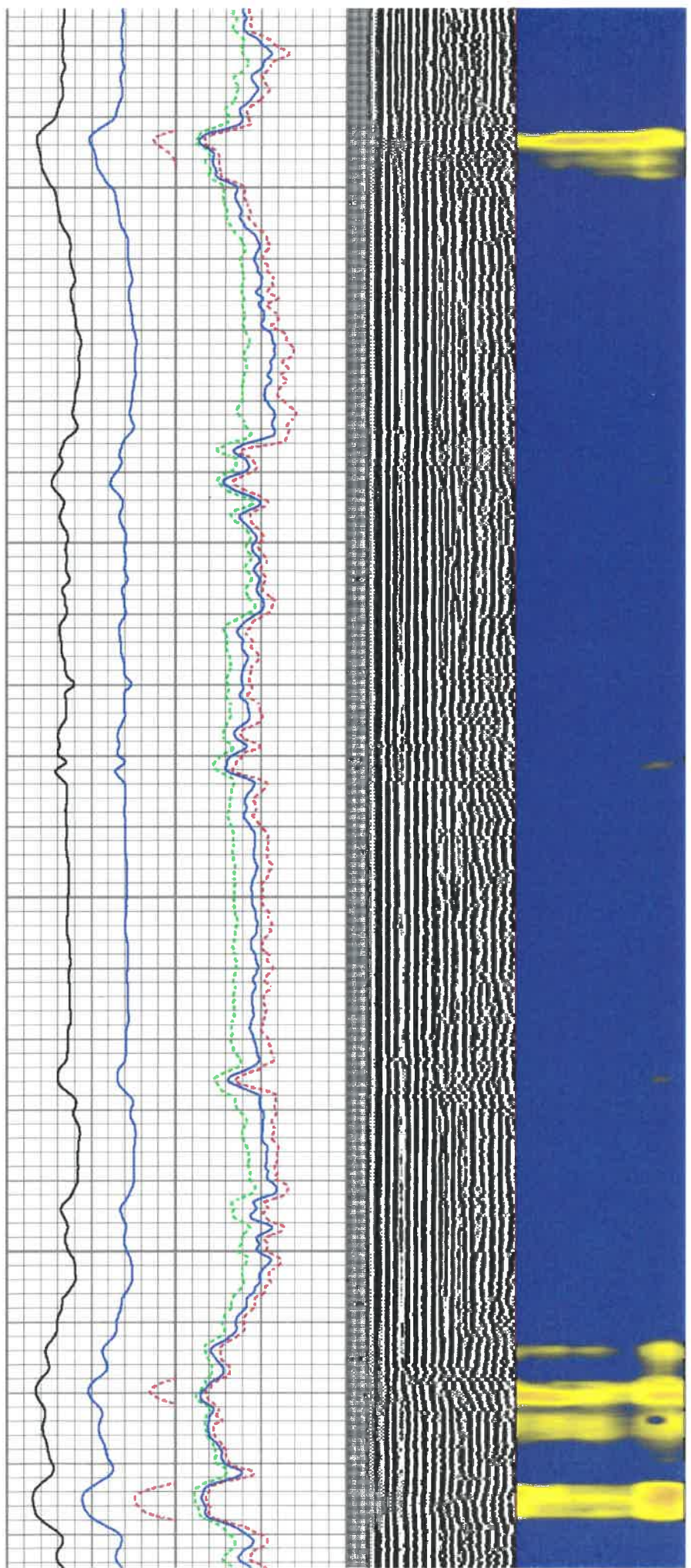


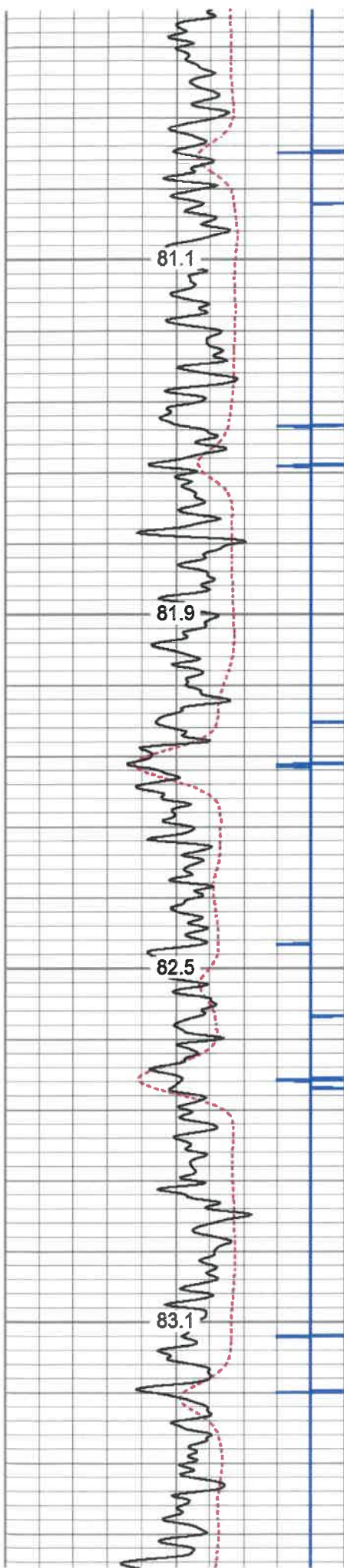
2800

2850

2900

2950



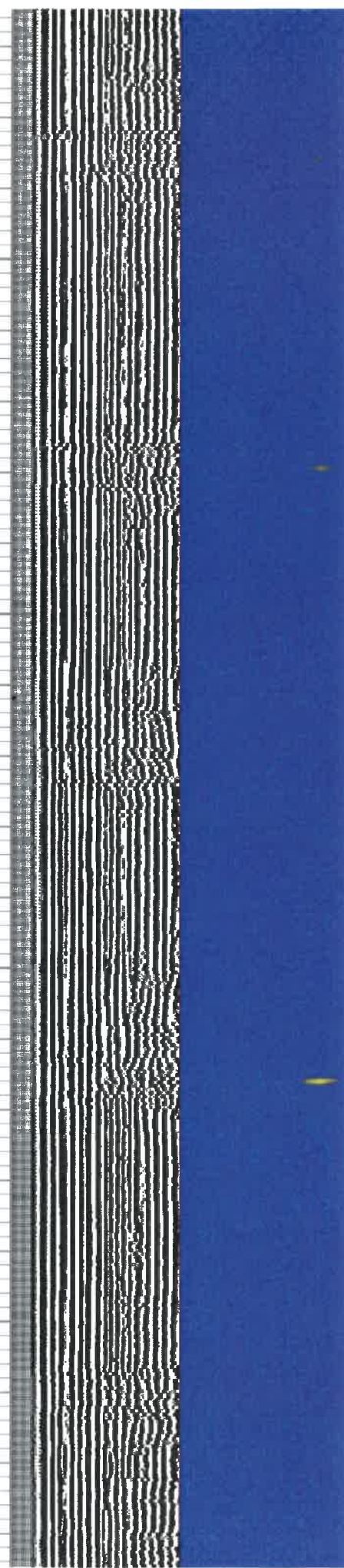
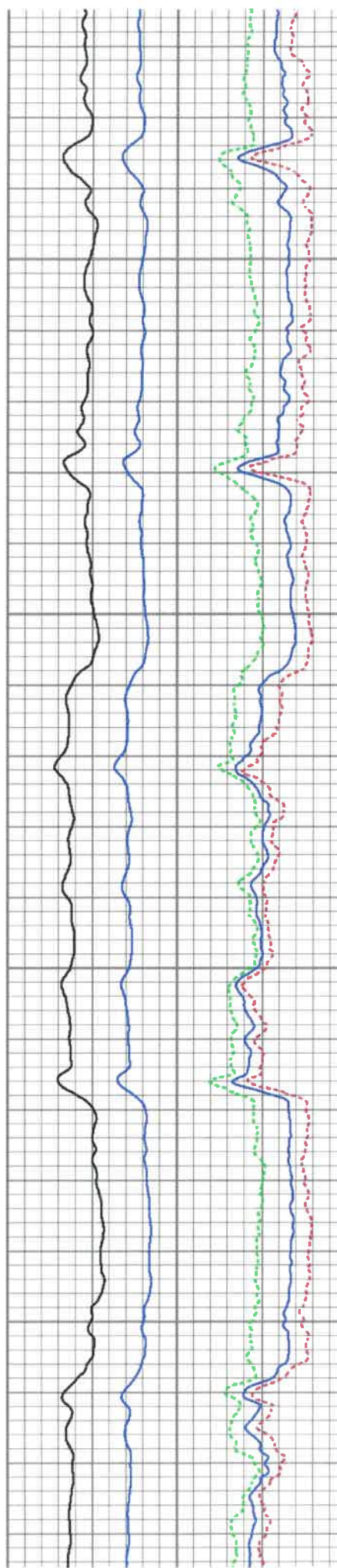


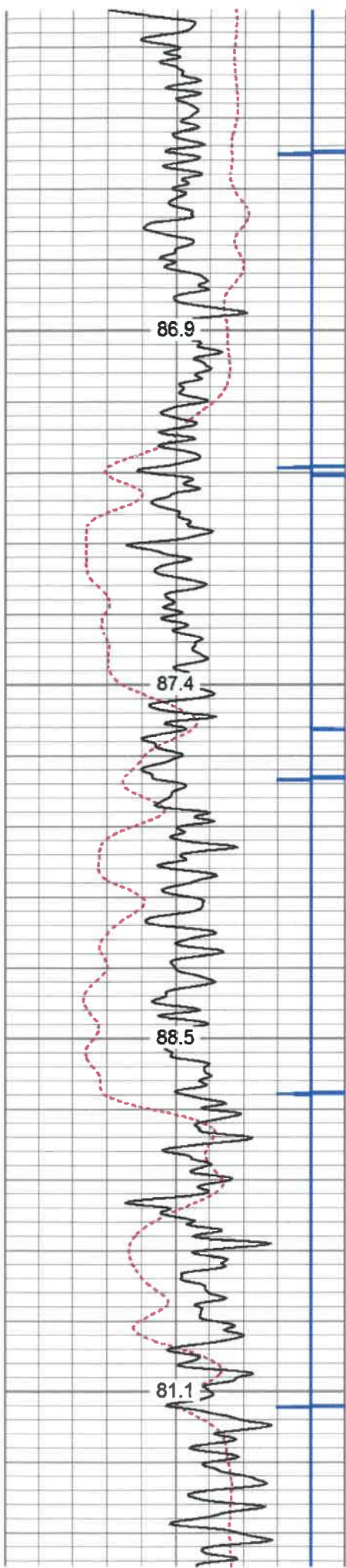
3250

3300

3350

3400



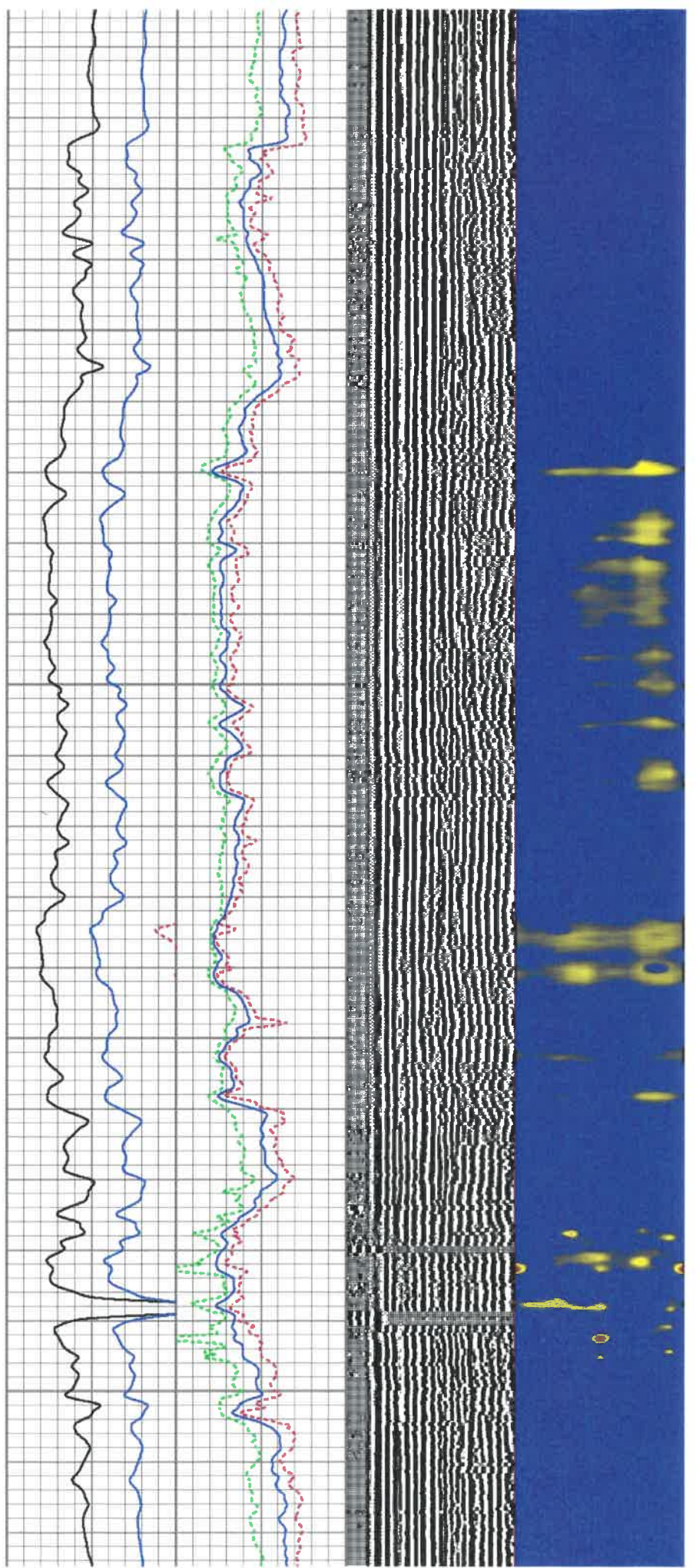


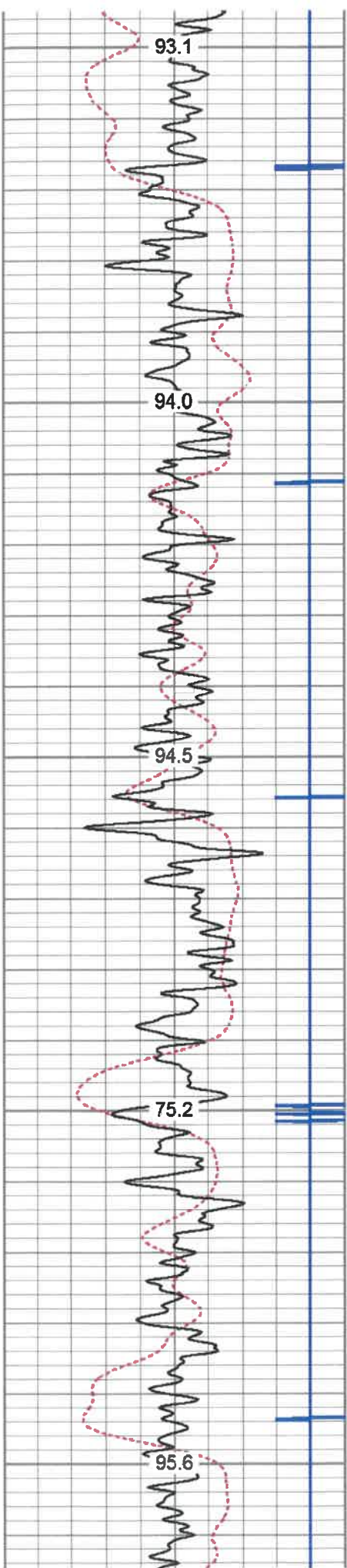
3700

3750

3800

3850





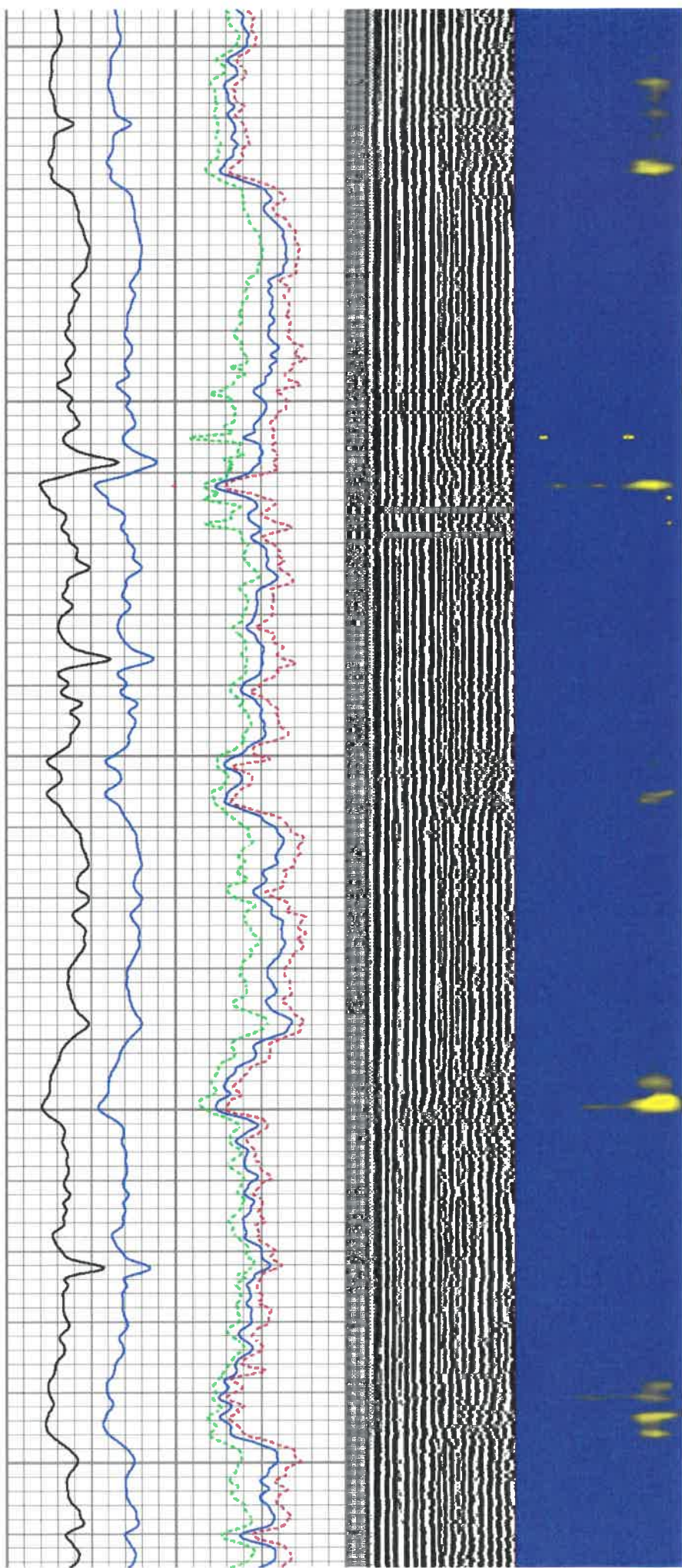
4100

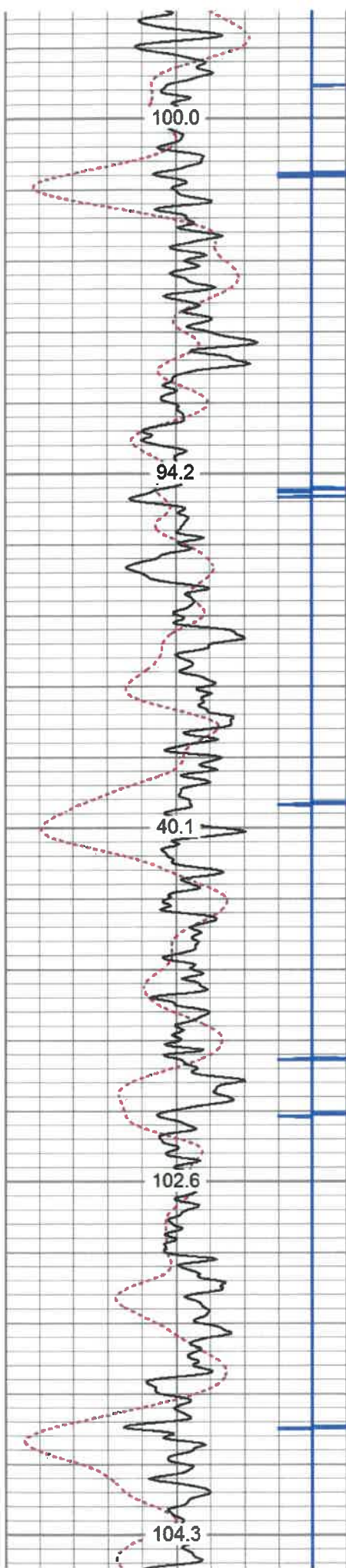
4150

4200

4250

4300





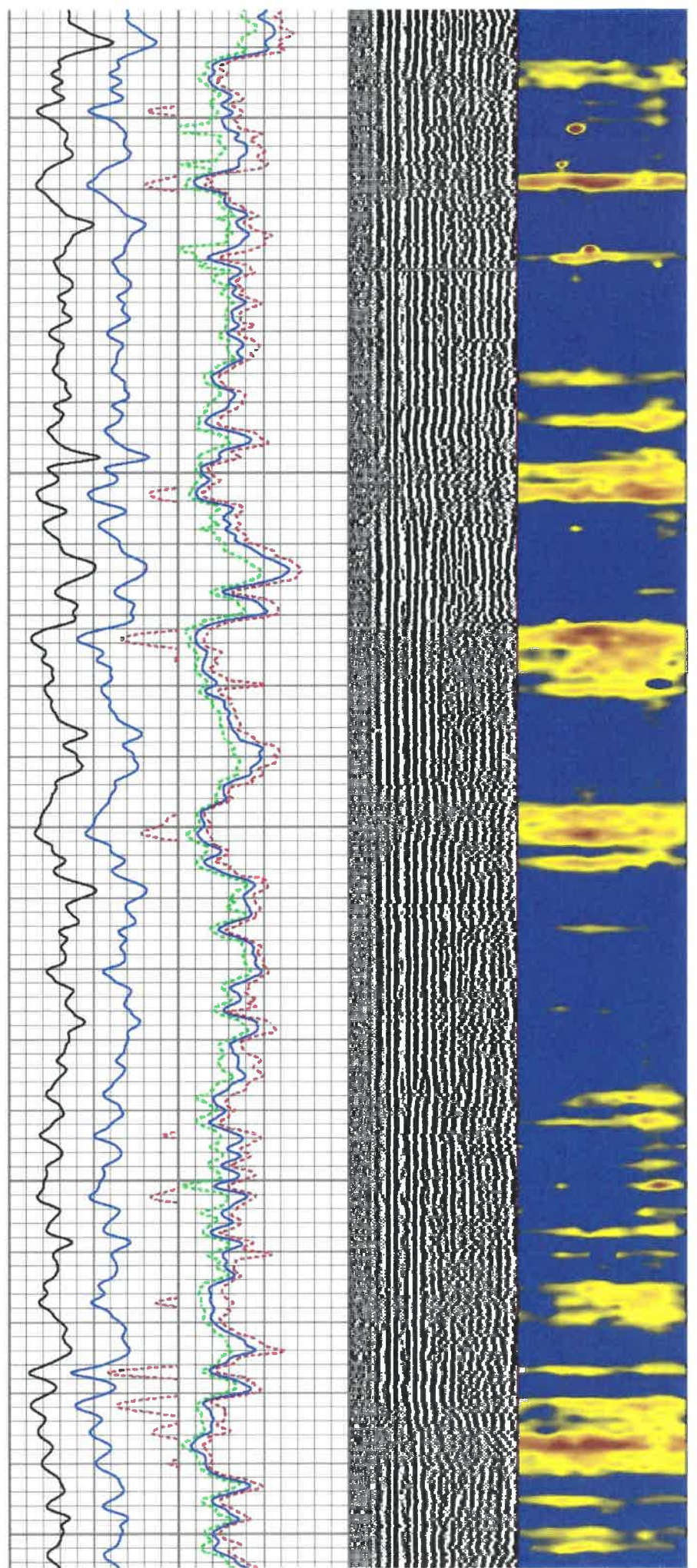
4550

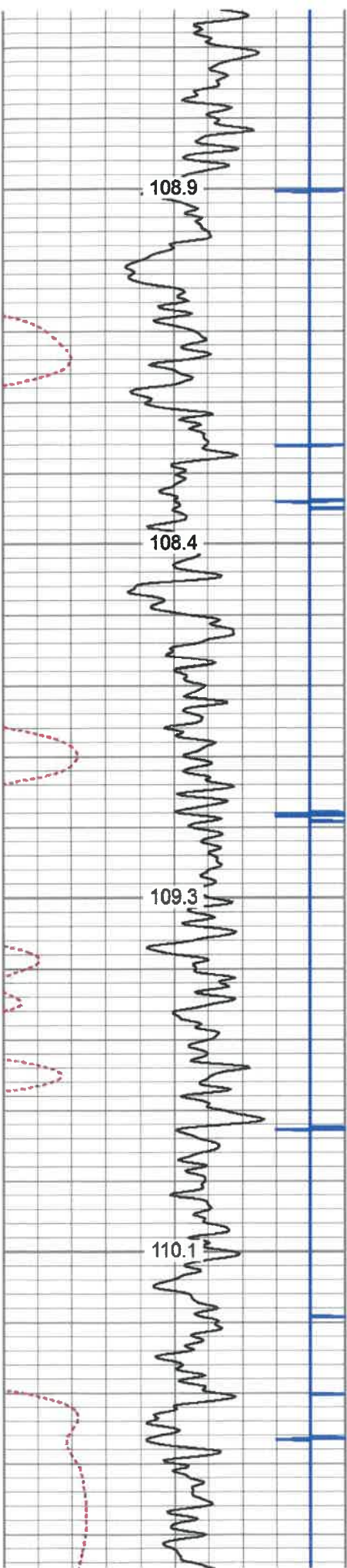
4600

4650

4700

4750



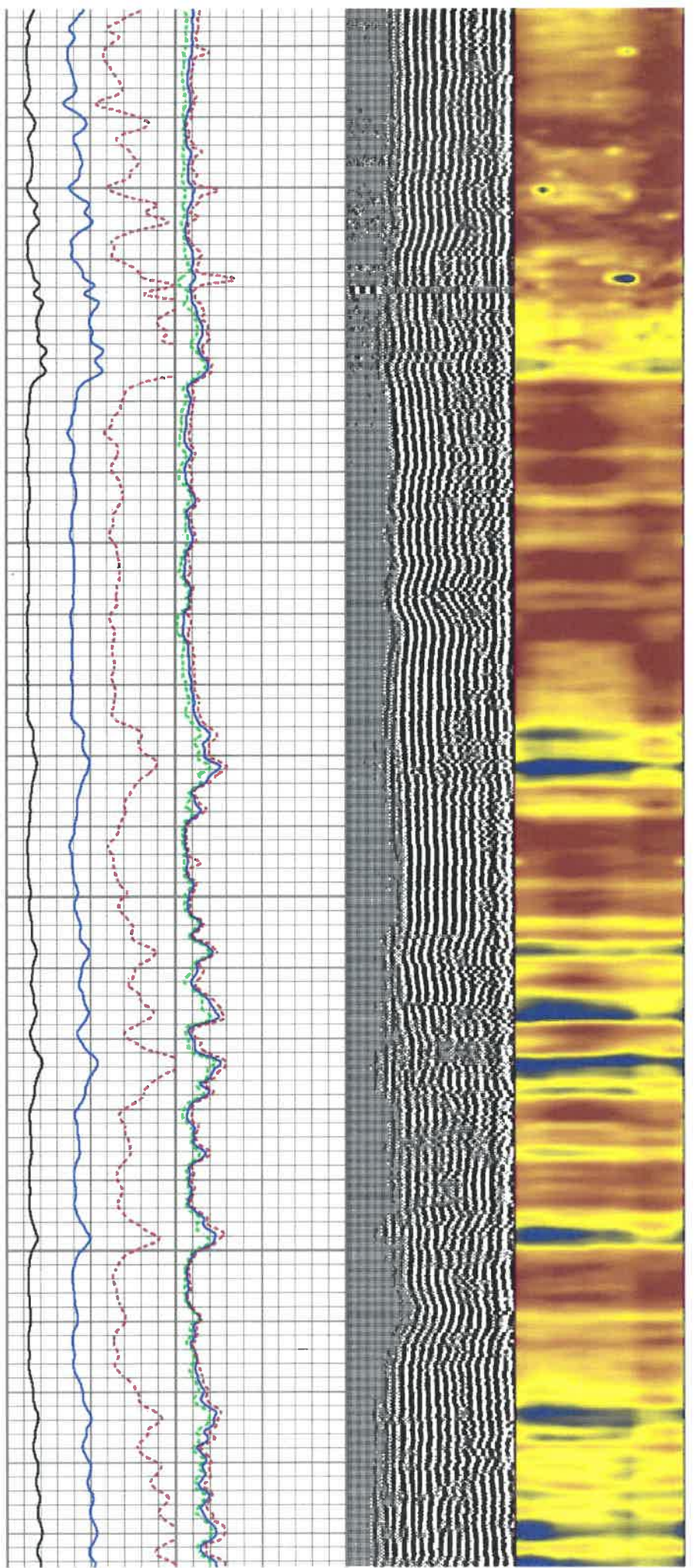


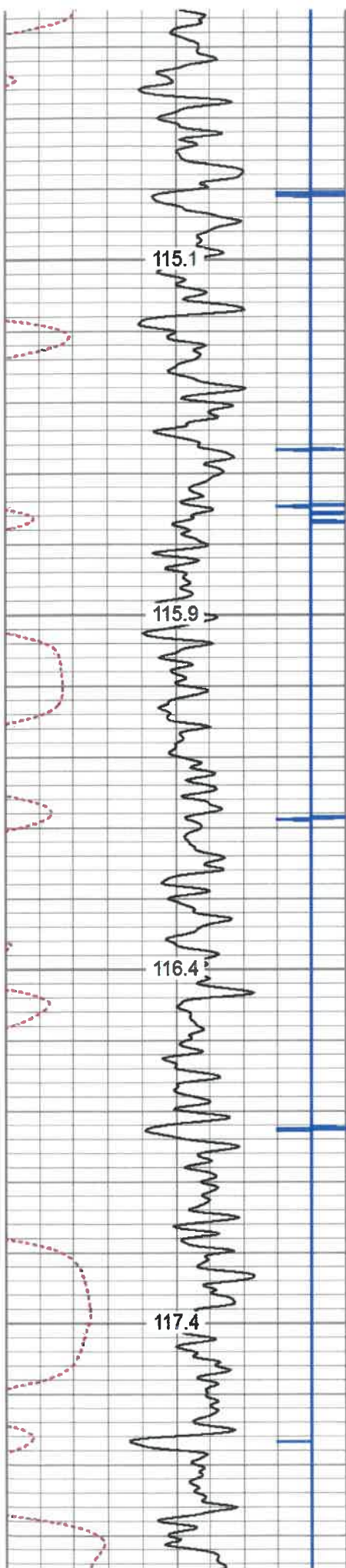
5000

5050

5100

5150



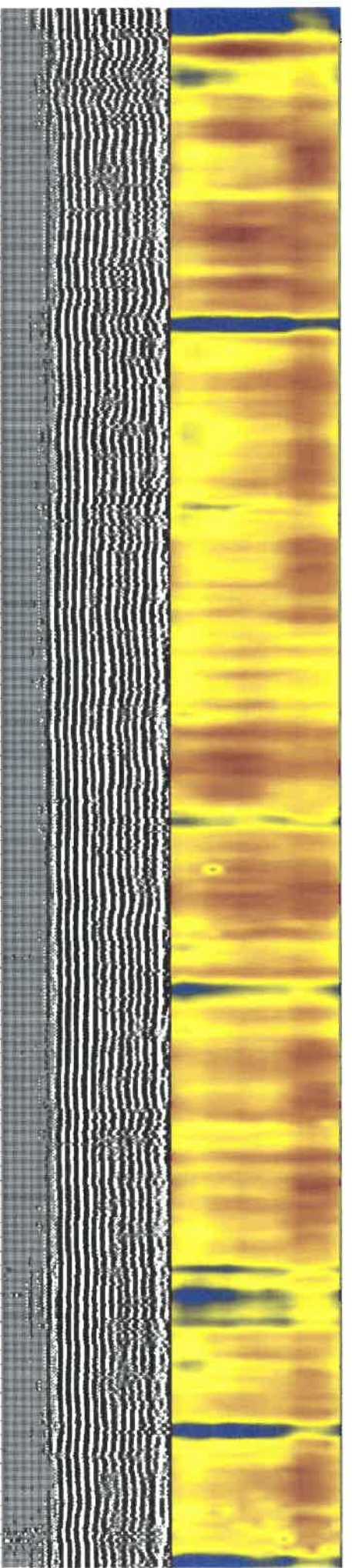
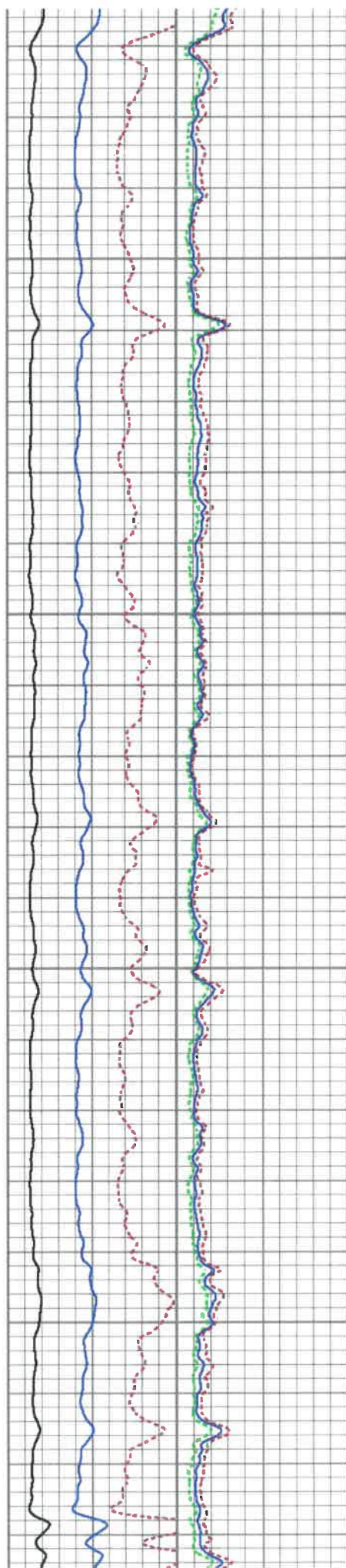


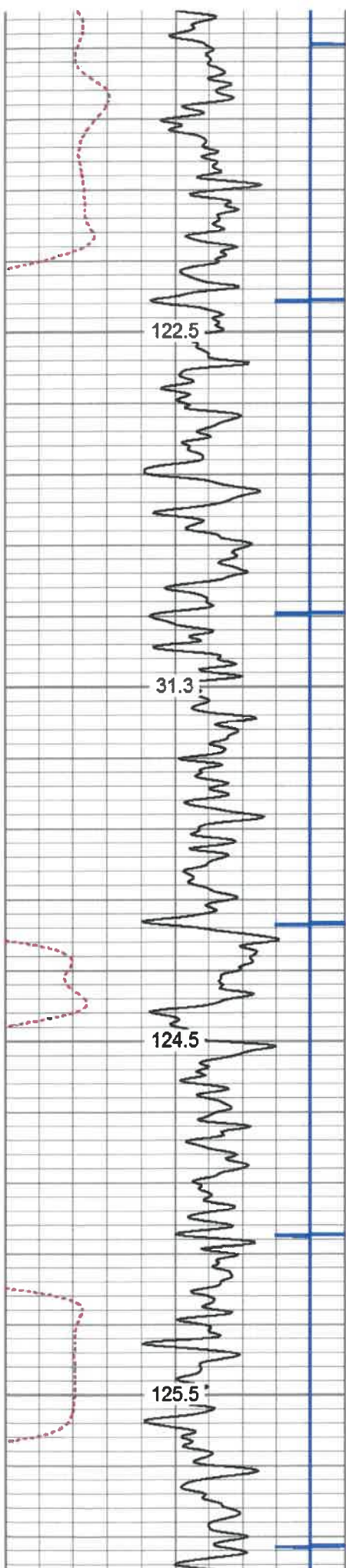
5450

5500

5550

5600



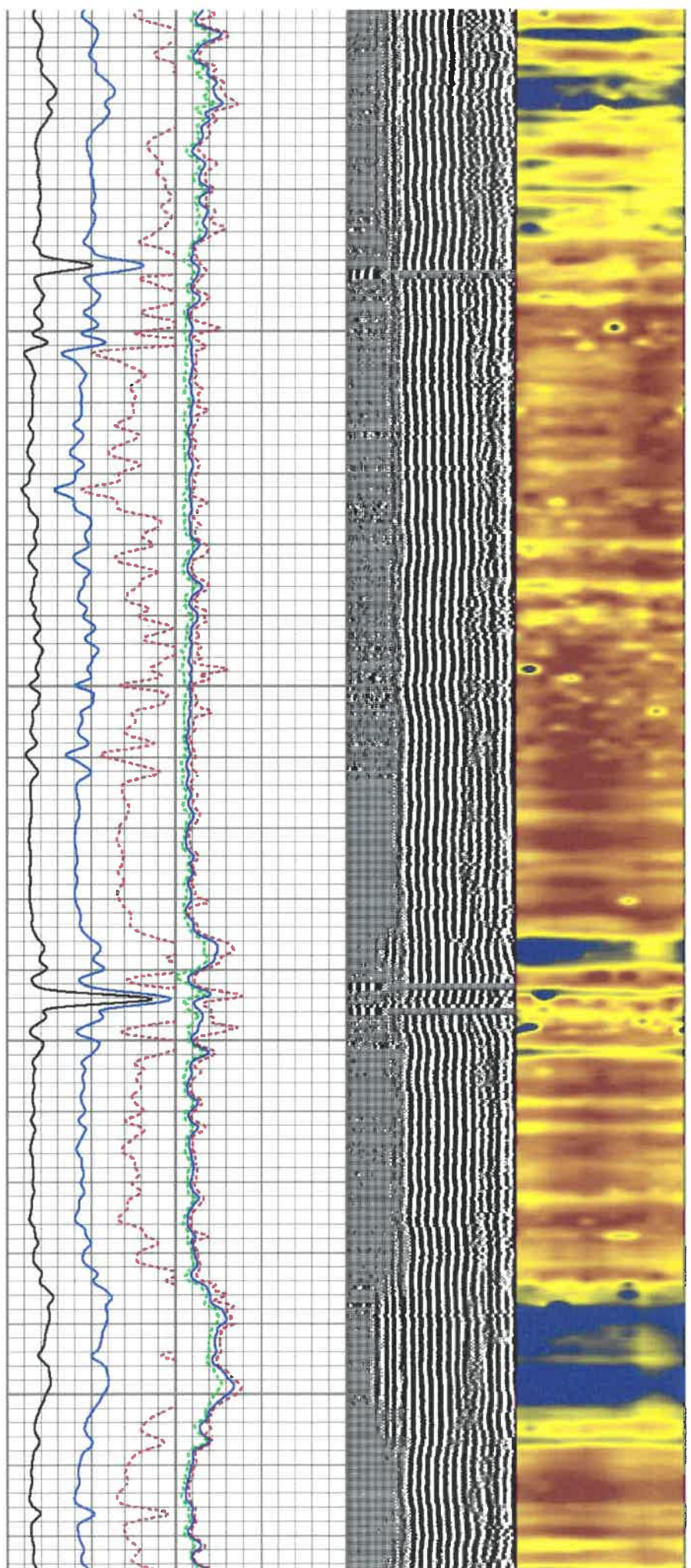


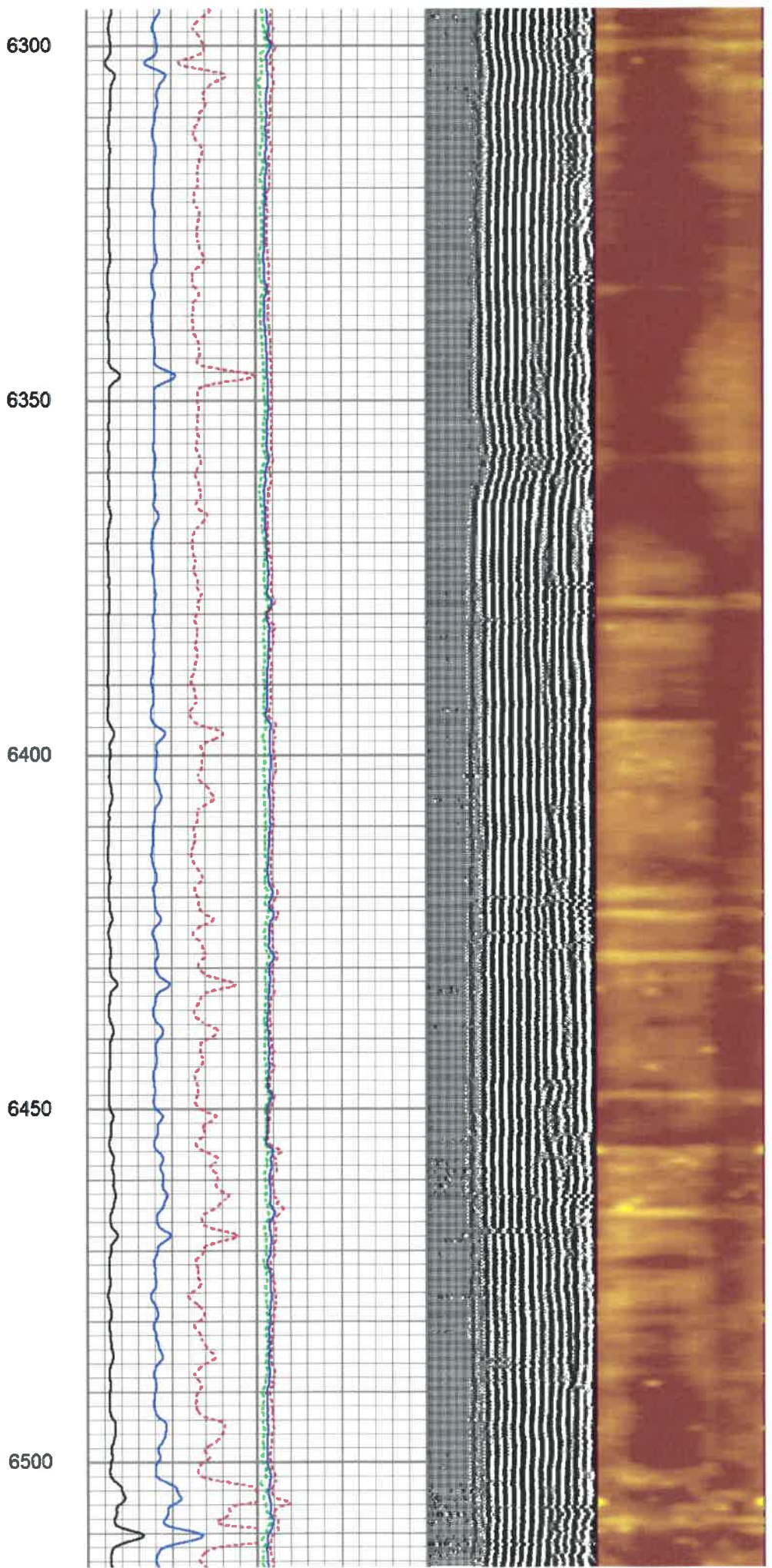
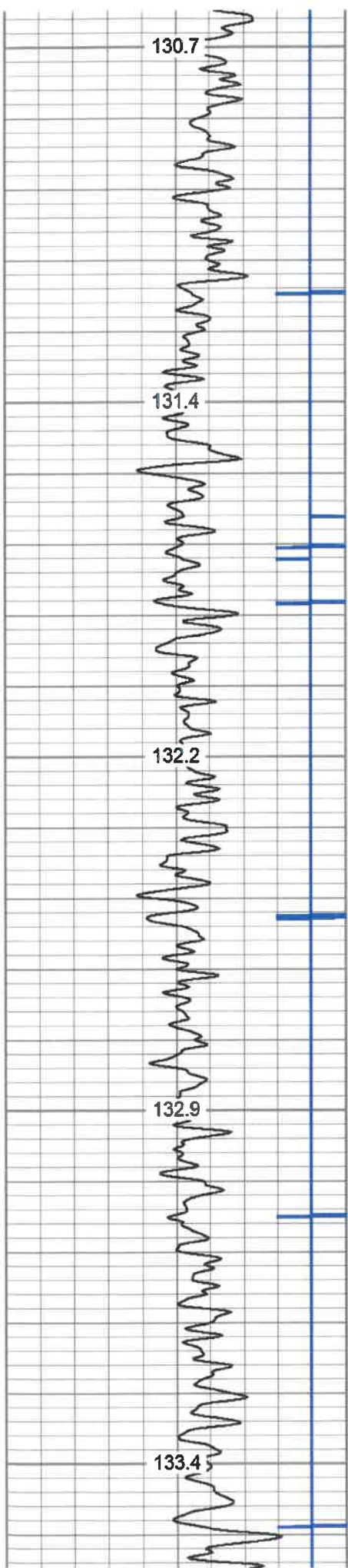
5900

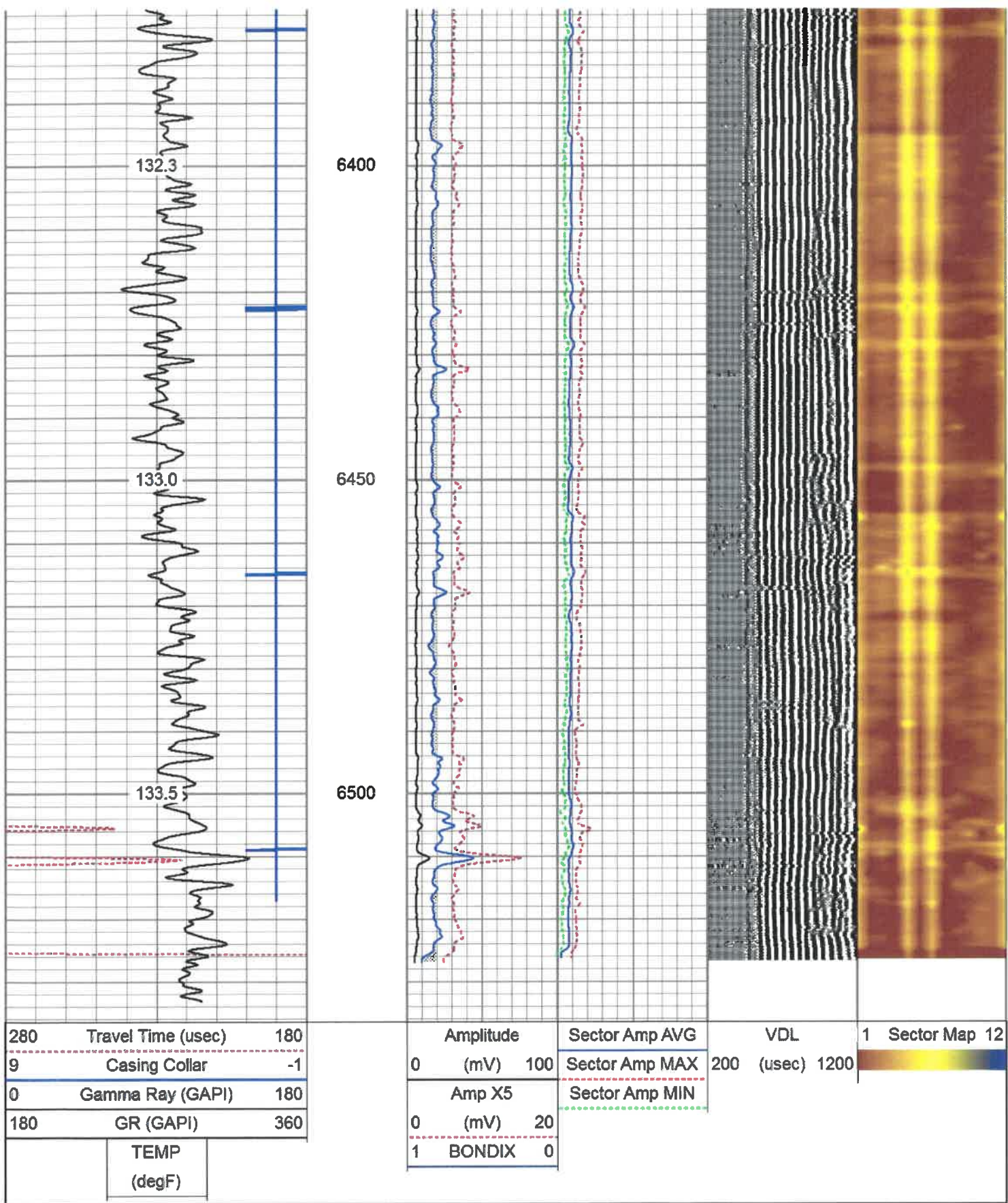
5950

6000

6050







Log Variables

DatabaseC:\ProgramData\Warrior\Data\grounds2h.db
Dataset field/well/run1/pass2/_vars_

Top - Bottom

BHTEMP_Src	BOREID	BOTTEMP	CASEOD	CASETHCK	CASEWGHT	MAXAMPL
	in	degF	in	in	lb/ft	mV
TEMP	7.875	100	5.5	0	23	71.9

Serial Number: T12_01
 Tool Model: Tek12
 Performed: Fri Oct 22 17:21:06 2010

	Reference		Reading	
Low Reference:	0.00	degF	0.00	usec
High Reference:	1.00	degF	1.00	usec
Gain:	0.33			
Offset:	0.00			
Delta Spacing	2			

Sensor	Offset (ft)	Schematic	Description	Length (ft)	O.D. (in)	Weight (lb)
			Titan-1.4375 1 7/16 Titan Type II Cable Head	1.03	1.44	5.00
CCL	19.20		CCL-312tekco (101) Tekco 3 1/8" 450 Deg. "F" SmCo Logging CCL	1.82	3.12	25.00
			Tek-2.75 2 3/4" Tekco Adjustable Centralizer	2.73	2.75	25.00
TEMP	13.04					
WVFSYNC	13.04					
WVFCAL	13.04					
WVFS12	11.75					
WVFS11	11.75					
WVFS10	11.75					
WVFS9	11.75					
WVFS8	11.75					
WVFS7	11.75					
WVFS6	11.75					
WVFS5	11.75					
WVFS4	11.75					
WVFS3	11.75					
WVFS2	11.75					
WVFS1	11.75					
WV3FT	11.00					
WV5FT	10.00					
WVTEMP	6.67					
			SCBL-Tek12 (T12_01) Tekco 400 Deg F 12 Sector RIB with Temp	9.13	3.25	135.00
			Tek-2.75 2 3/4" Tekco Adjustable Centralizer	2.73	2.75	25.00