

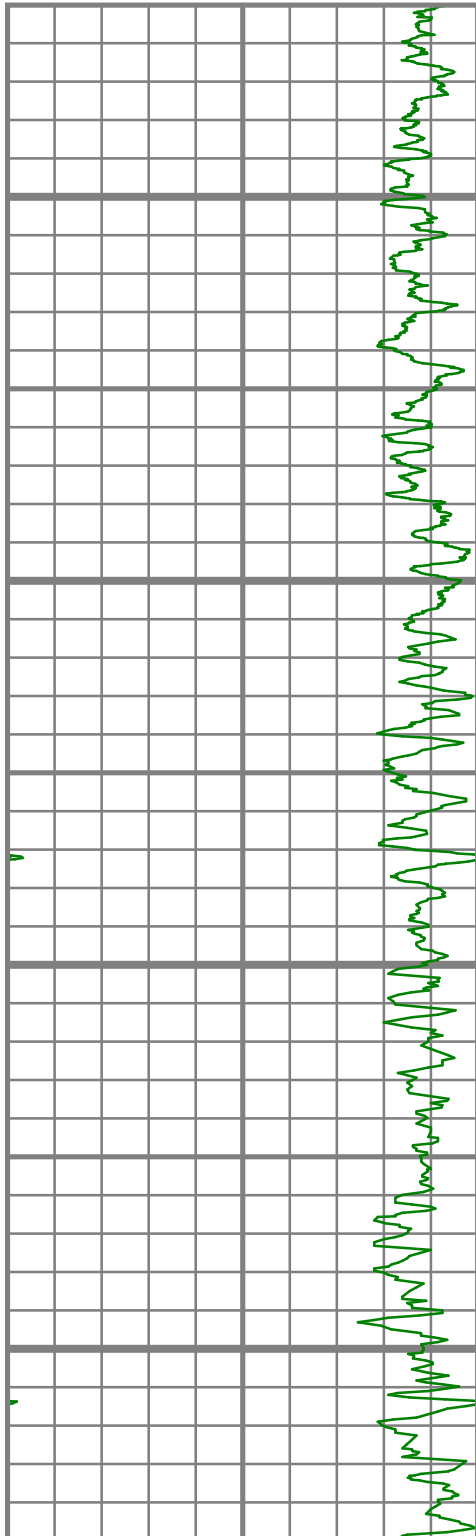
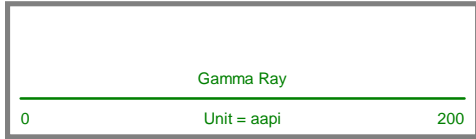


COMPANY : STONE ENERGY
WELL : LANTZ-MILLS UNIT 2 #3H
FIELD : BUFFALO RUN

Log as of: 6/16/2010 17:27:17
Eastern Standard Time

Attention :
Copy :

All interpretations are opinions based on inferences from electrical or other measurements and we cannot, and do not guarantee the accuracy or correctness of any interpretations, and we shall not, except in the case of gross or willful negligence on our part, be liable or responsible for any loss, costs, damages or expenses incurred or sustained by anyone resulting from any interpretation made by any of our officers, agents or employees. These interpretations are also subject to our general terms and conditions as set out in our current price schedule.



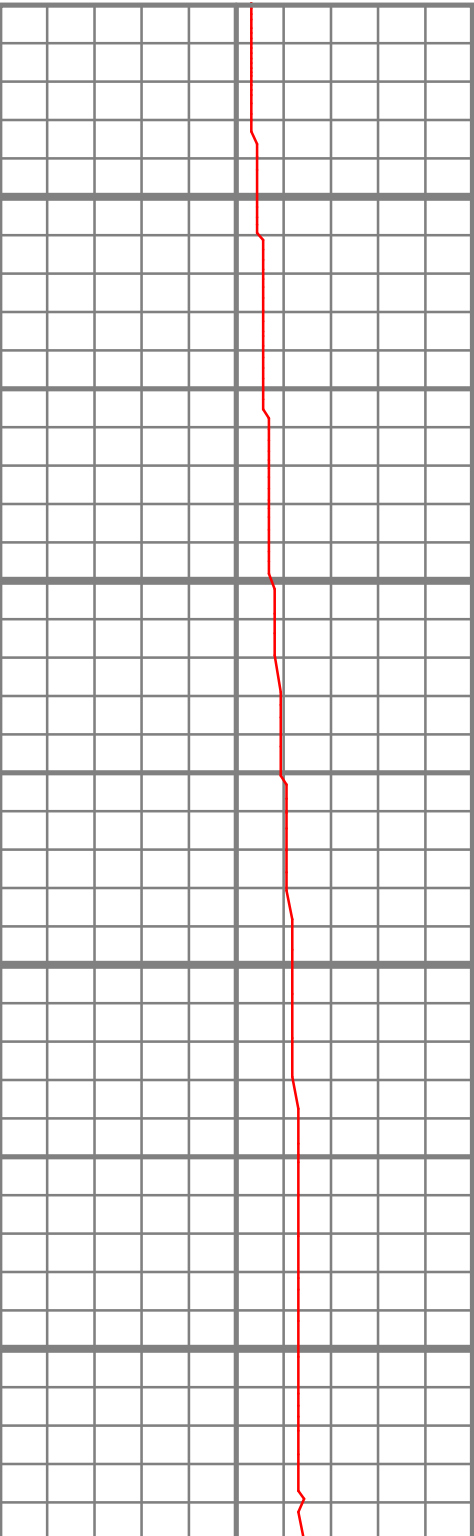
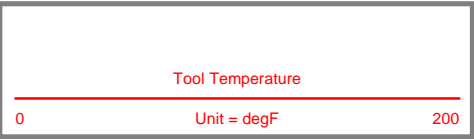
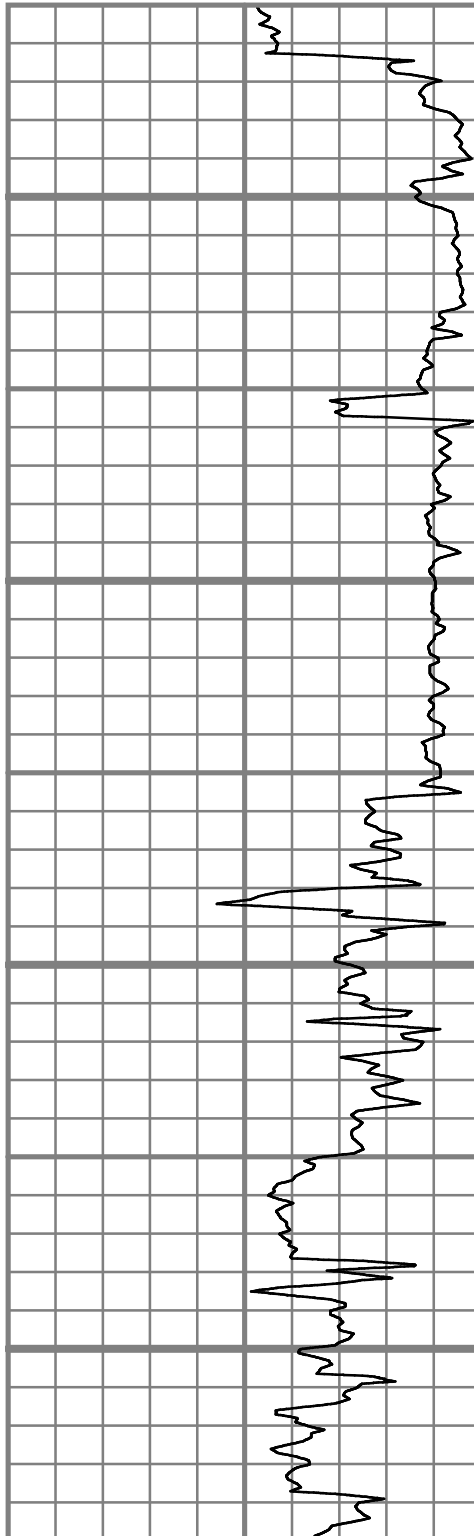
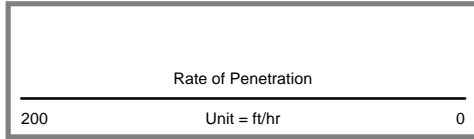
MEASURED DEPTH
1:600 (ft)

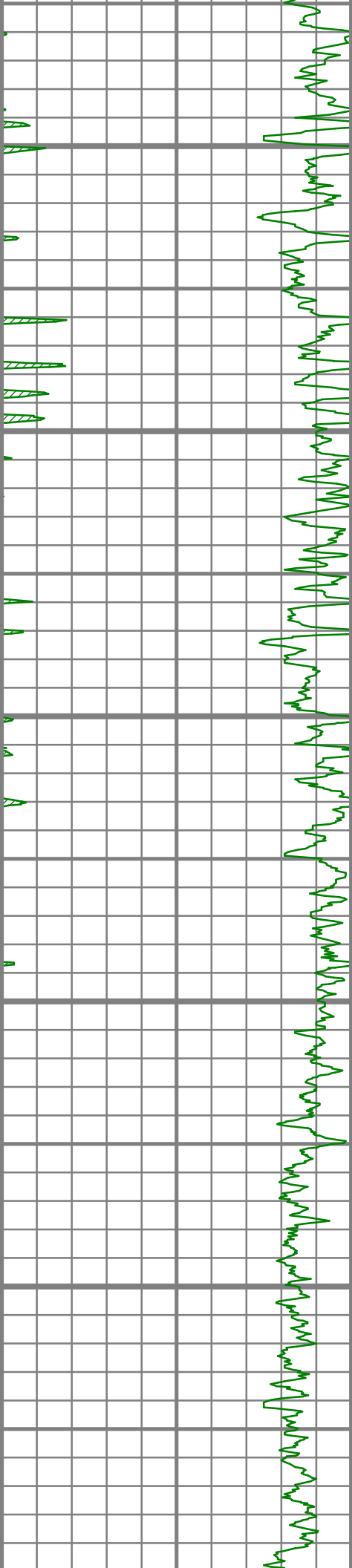
5700

5800

5900

6000





6100

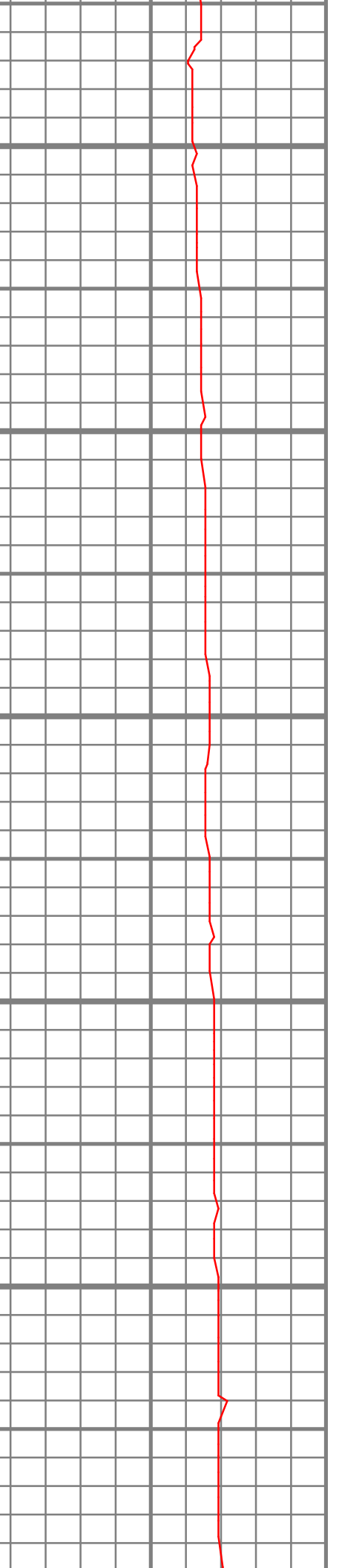
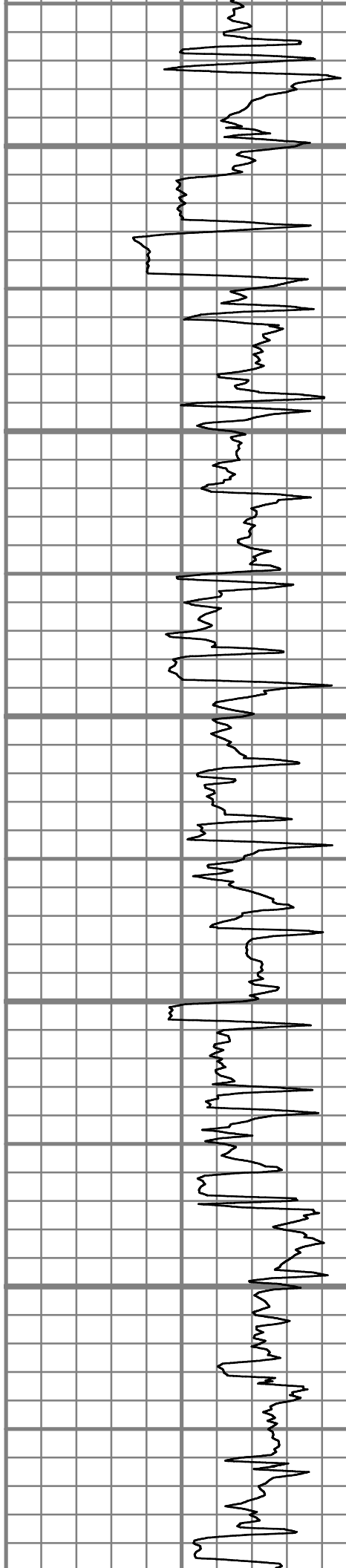
6200

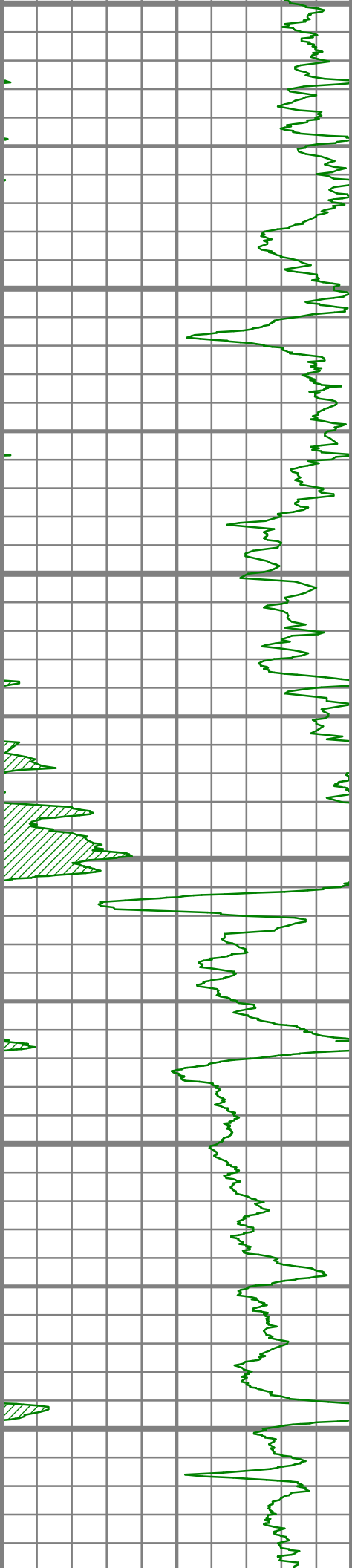
6300

6400

6500

6600





6600

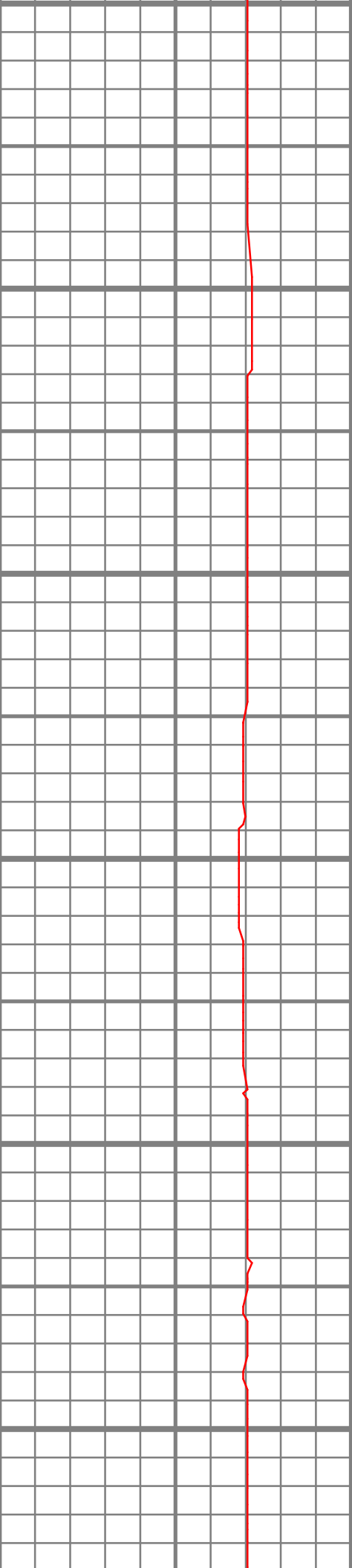
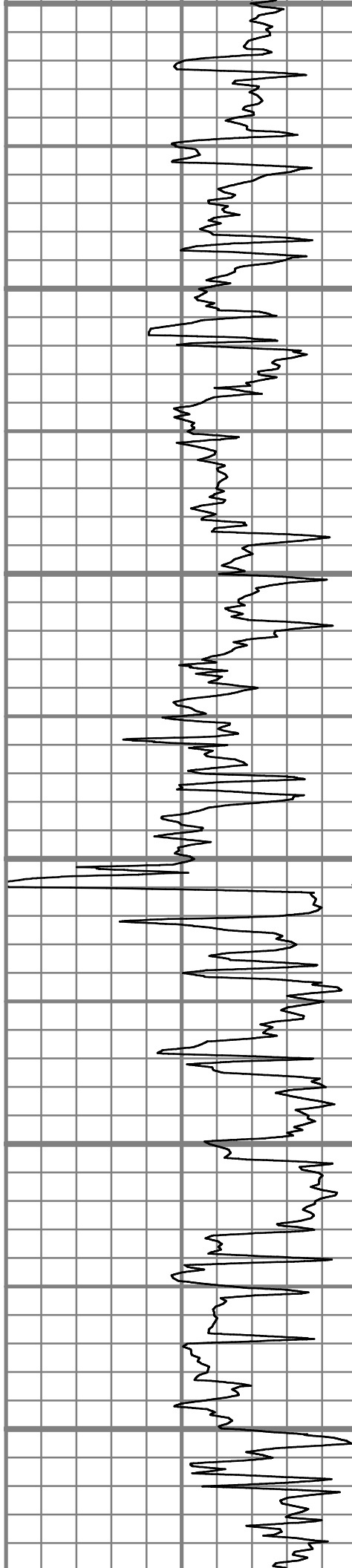
6700

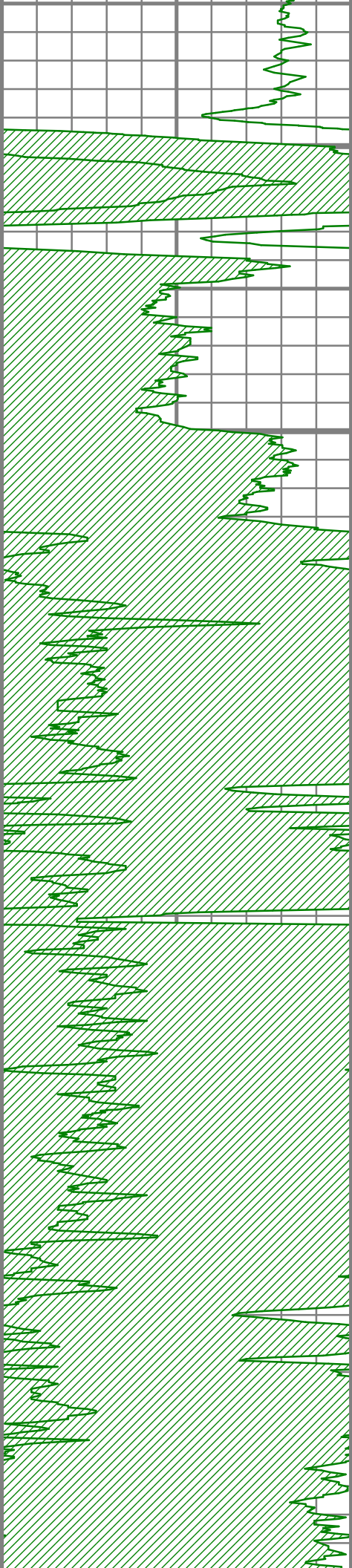
6800

6900

7000

7100





7200

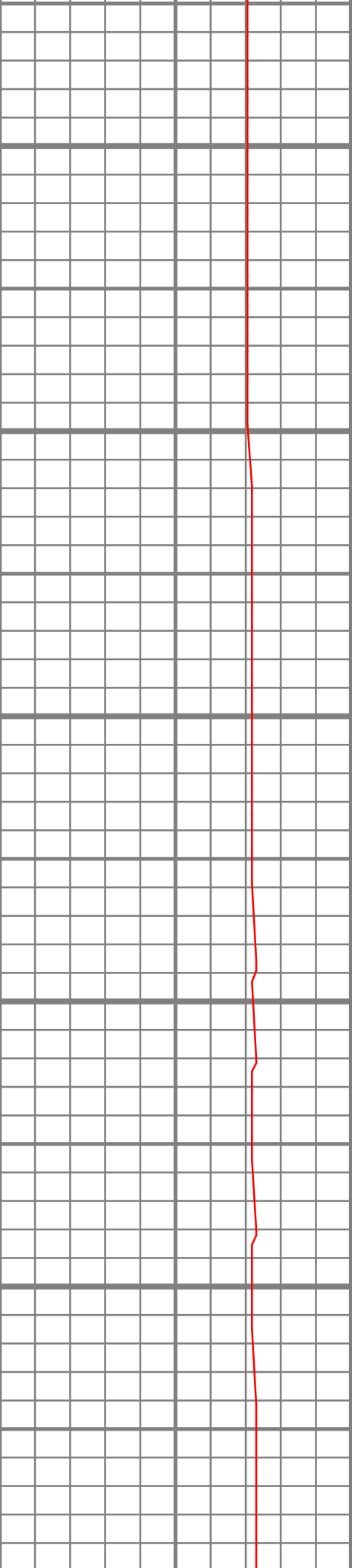
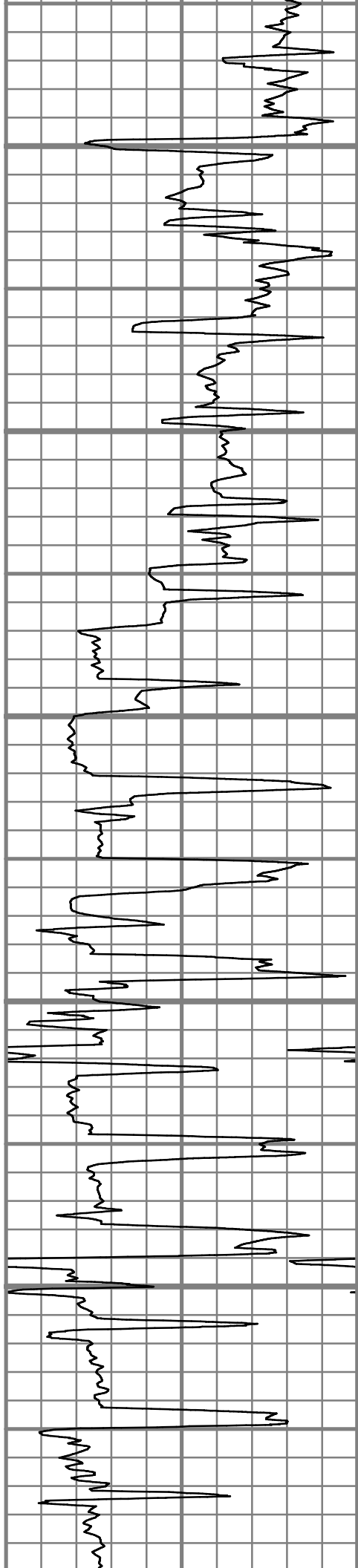
7300

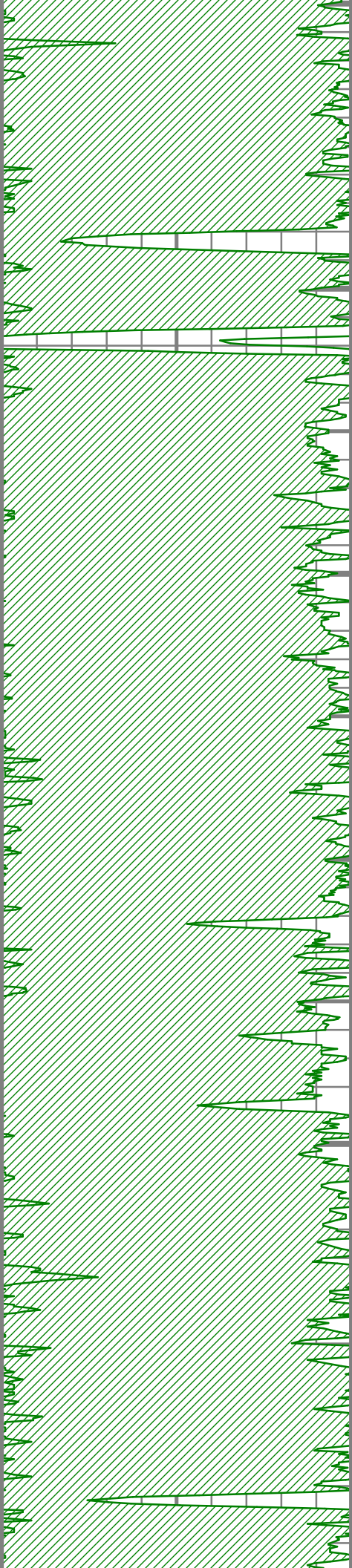
7400

7500

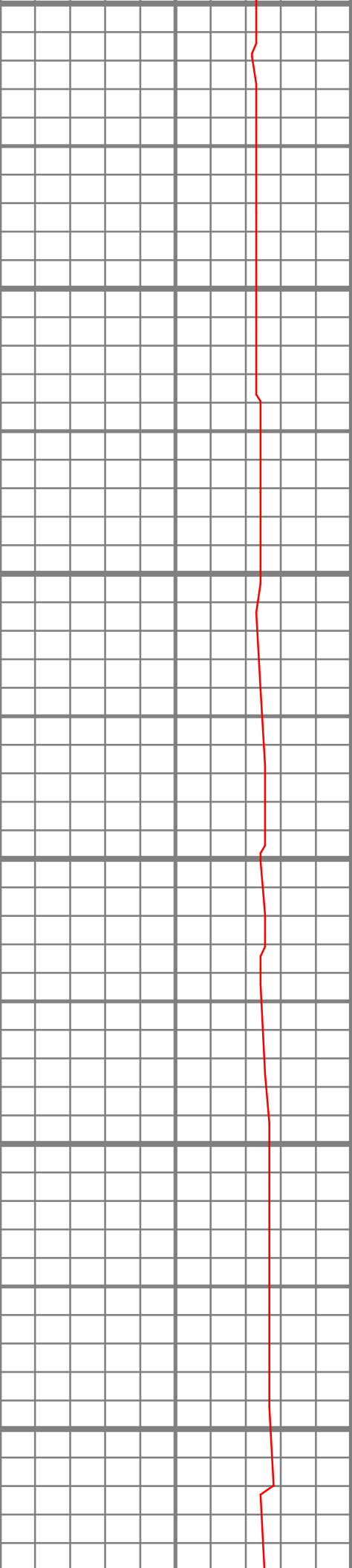
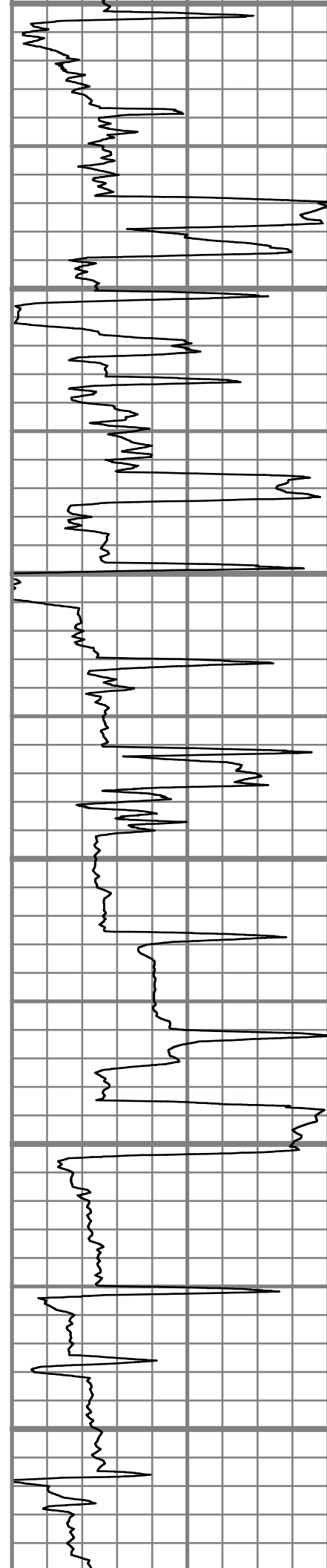
7600

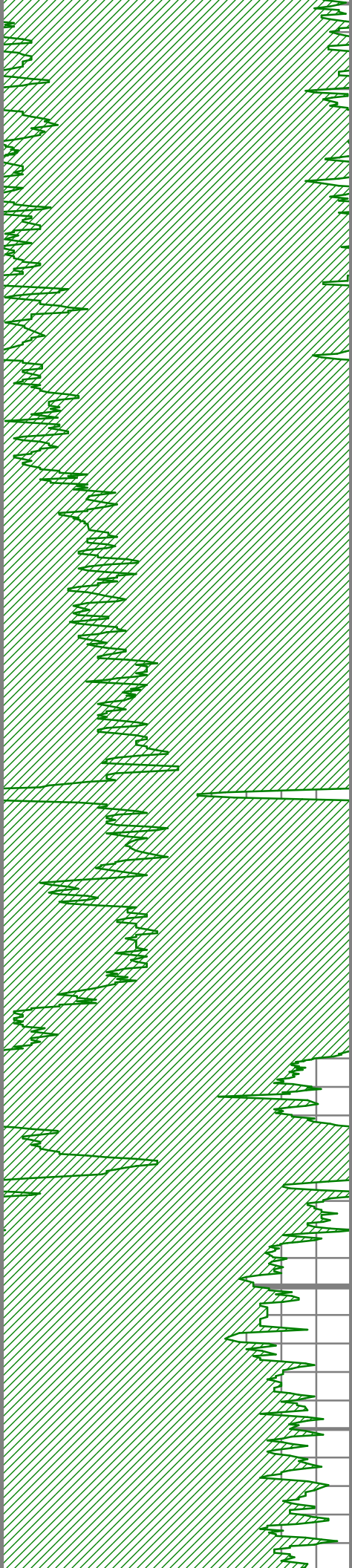
7700





7700
7800
7900
8000
8100
8200





8300

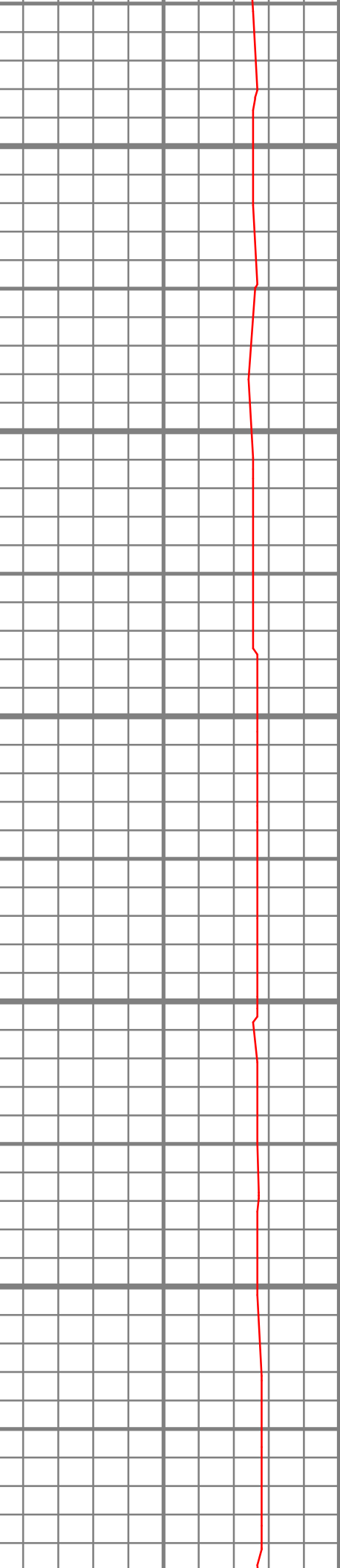
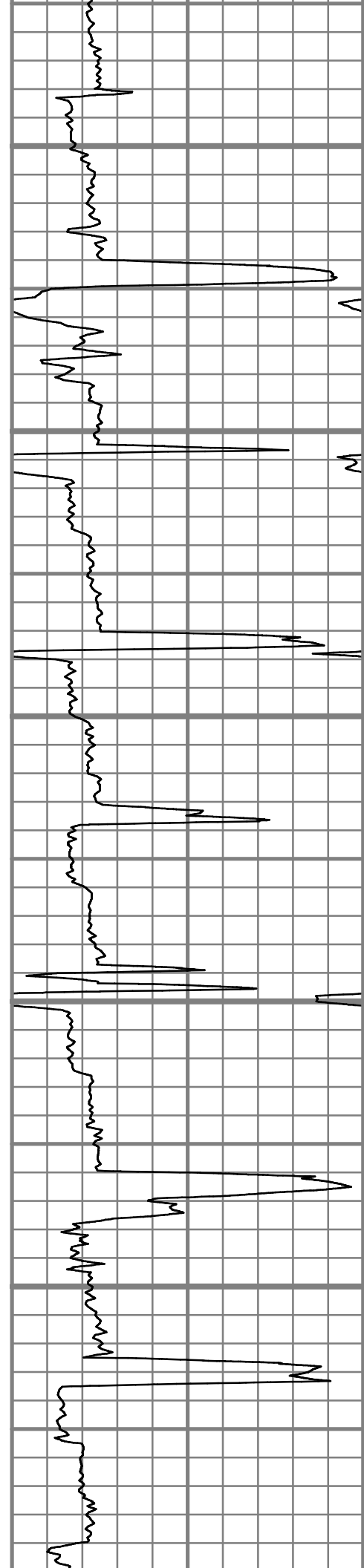
8400

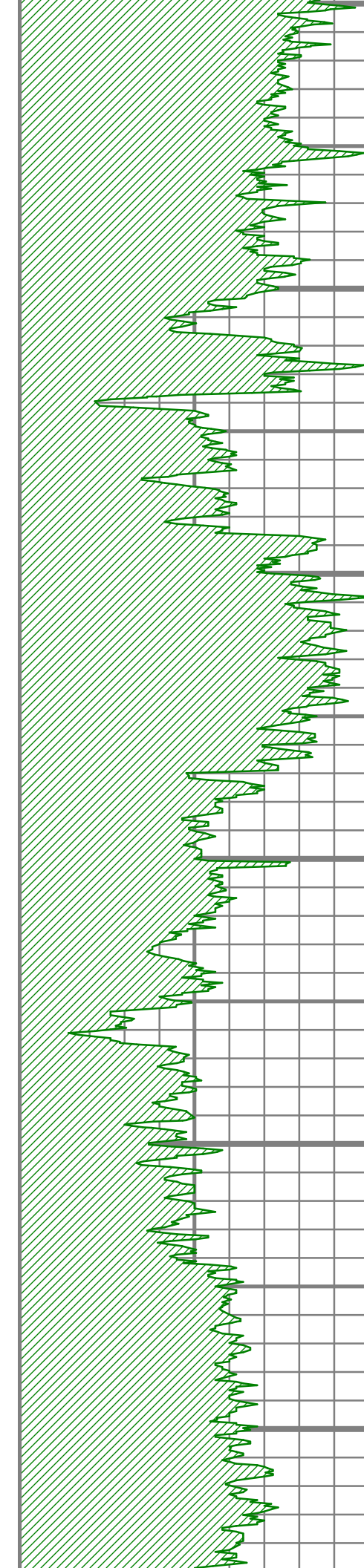
8500

8600

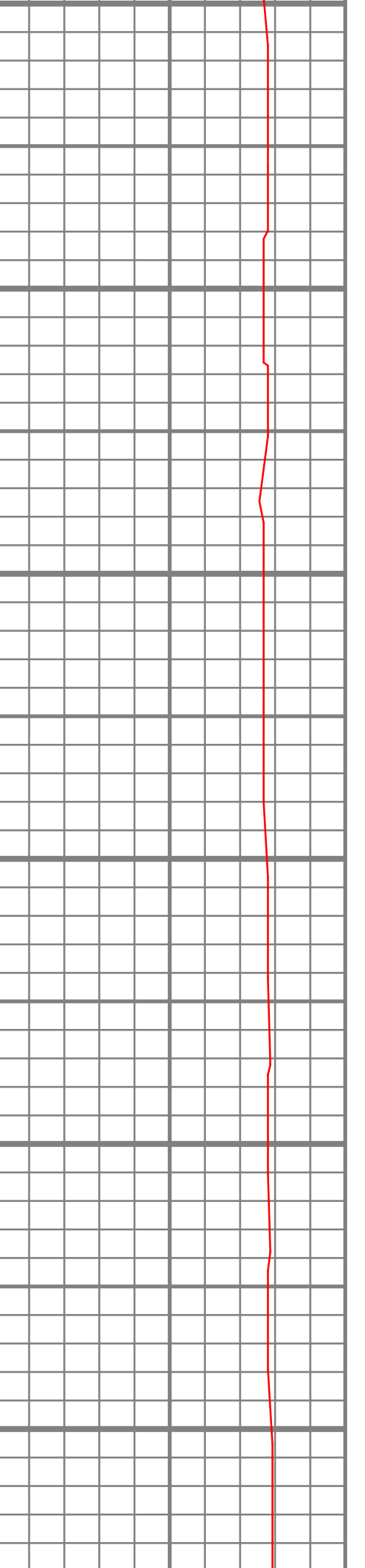
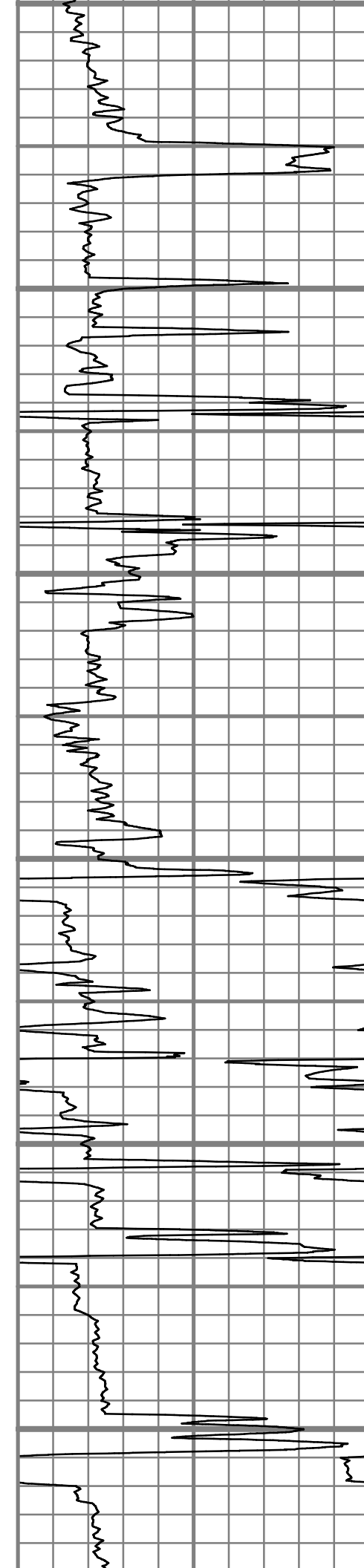
8700

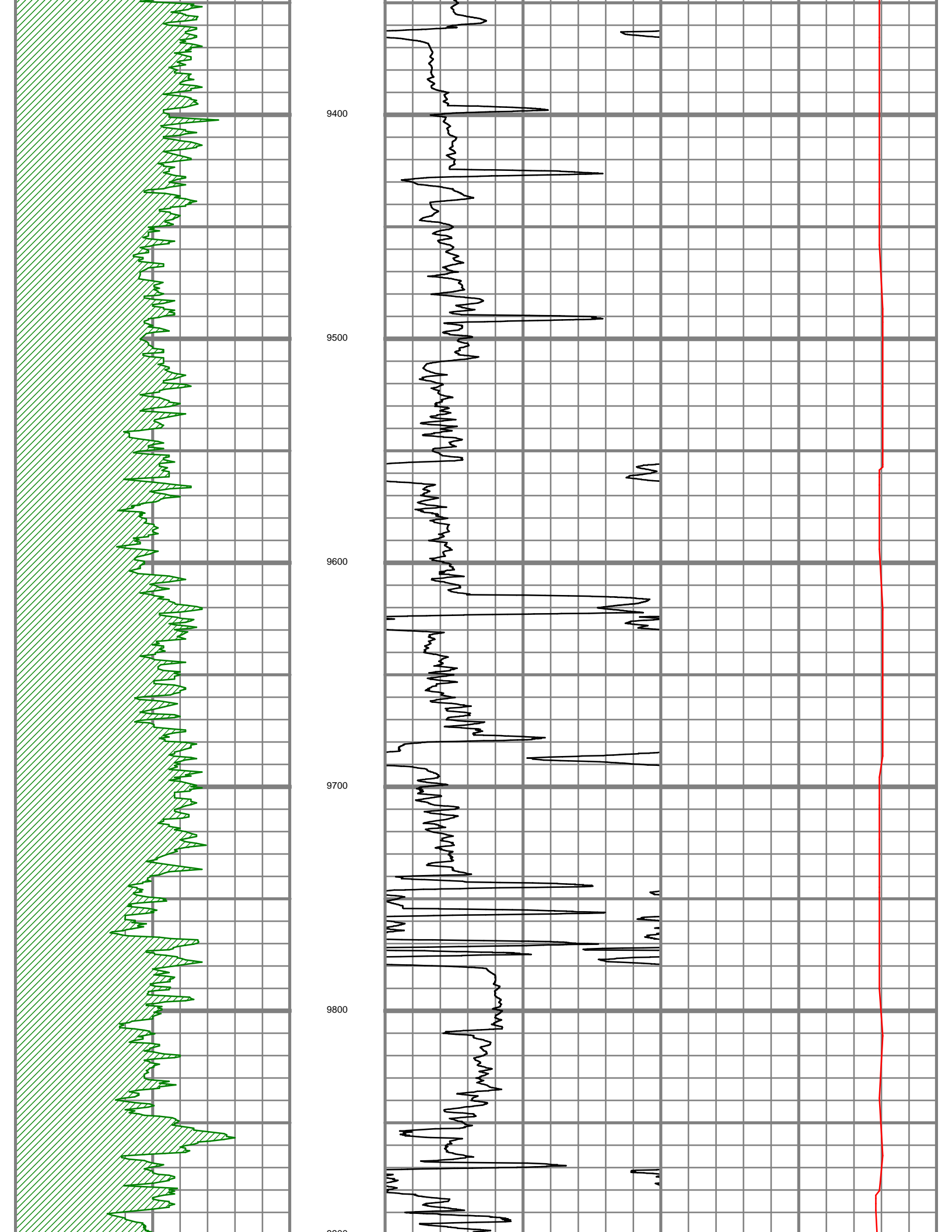
8800

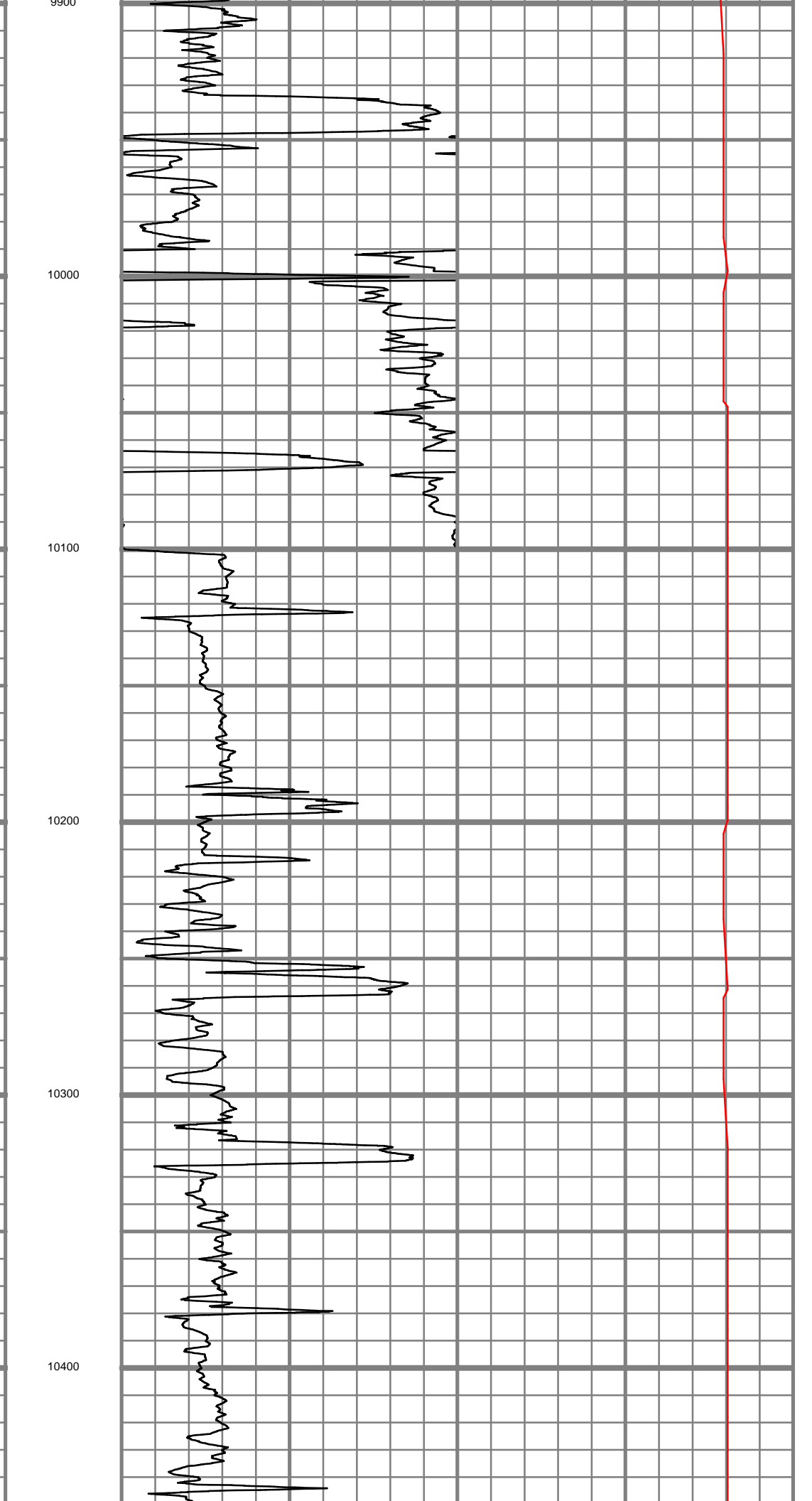
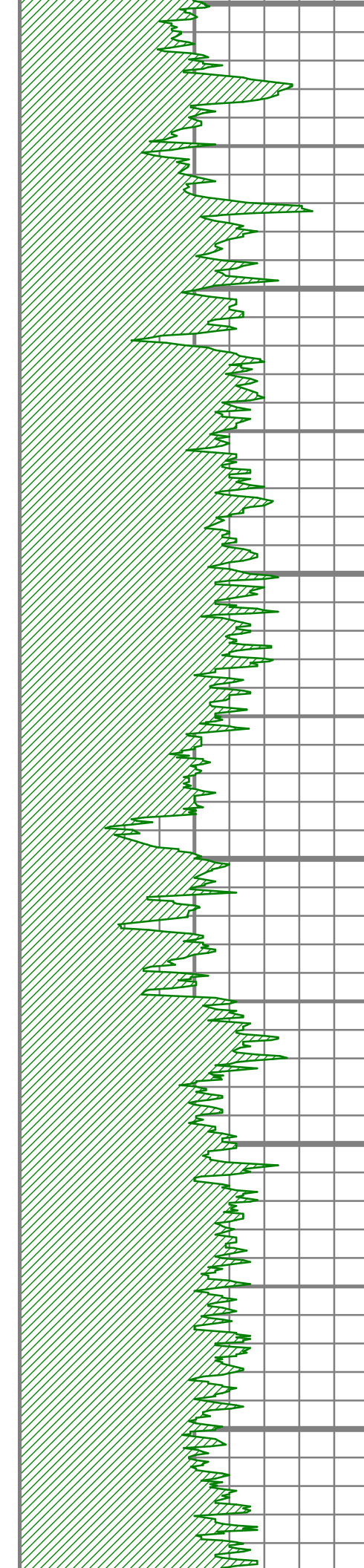


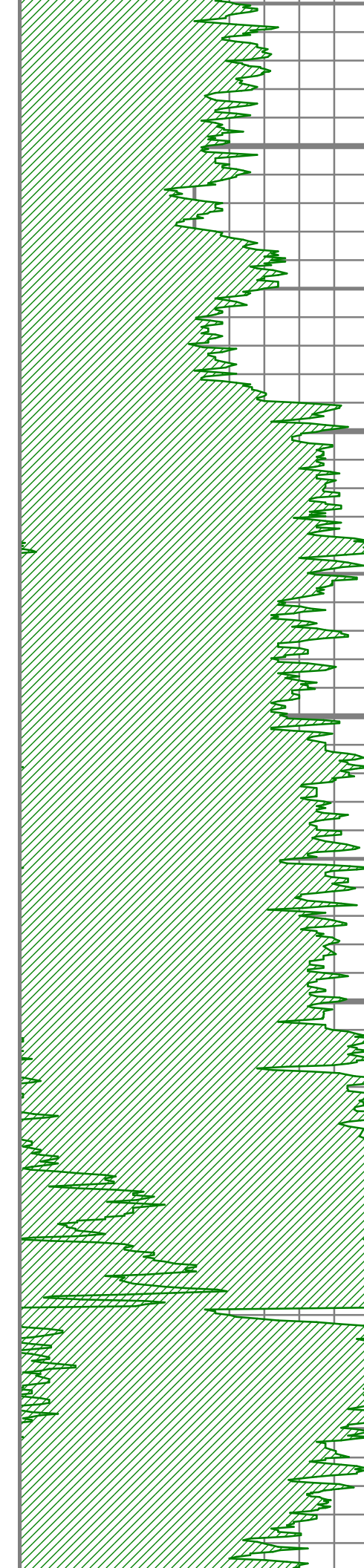


8800
8900
9000
9100
9200
9300

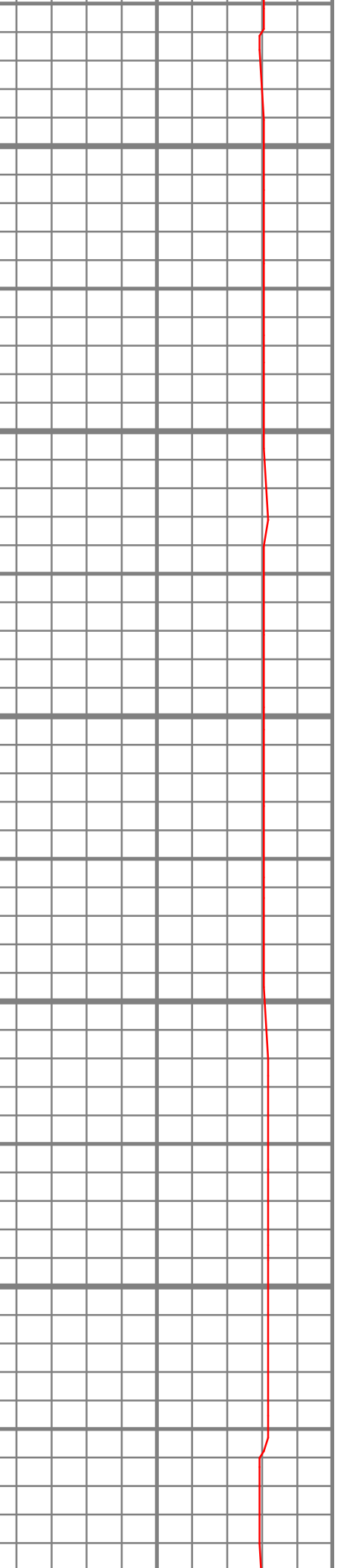
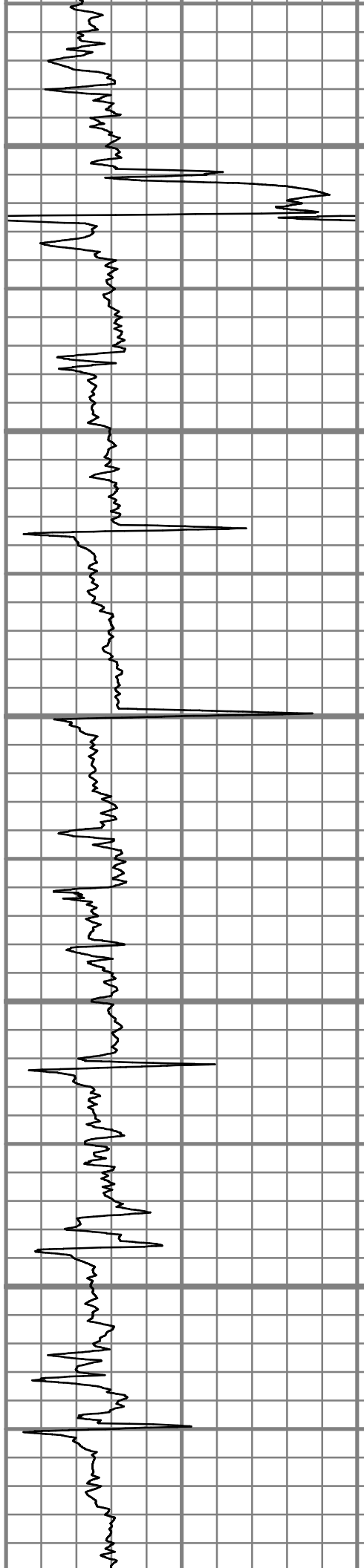


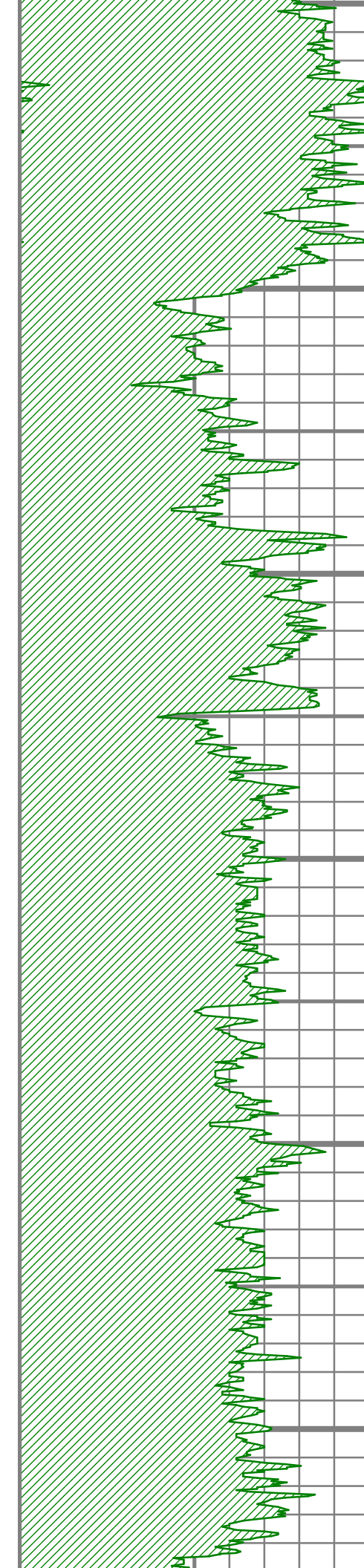




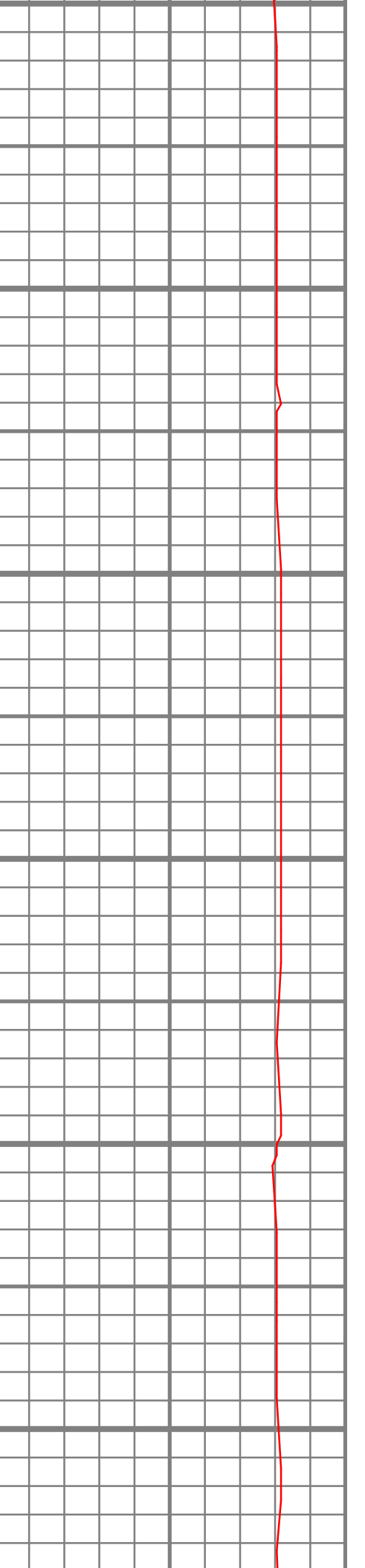
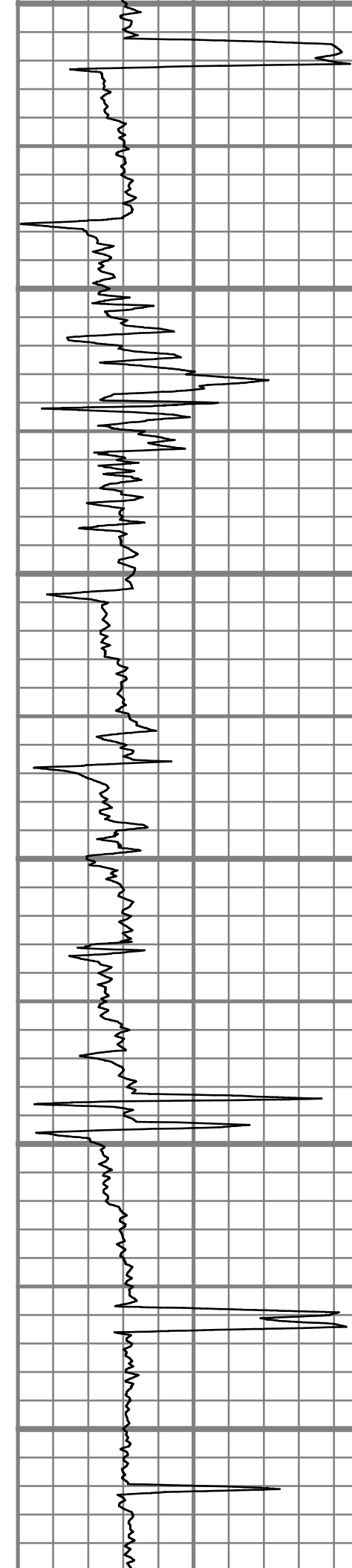


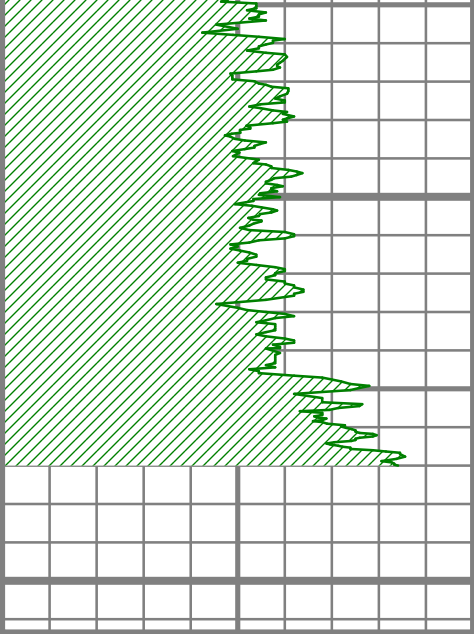
10500
10600
10700
10800
10900
11000





11000
11100
11200
11300
11400
11500



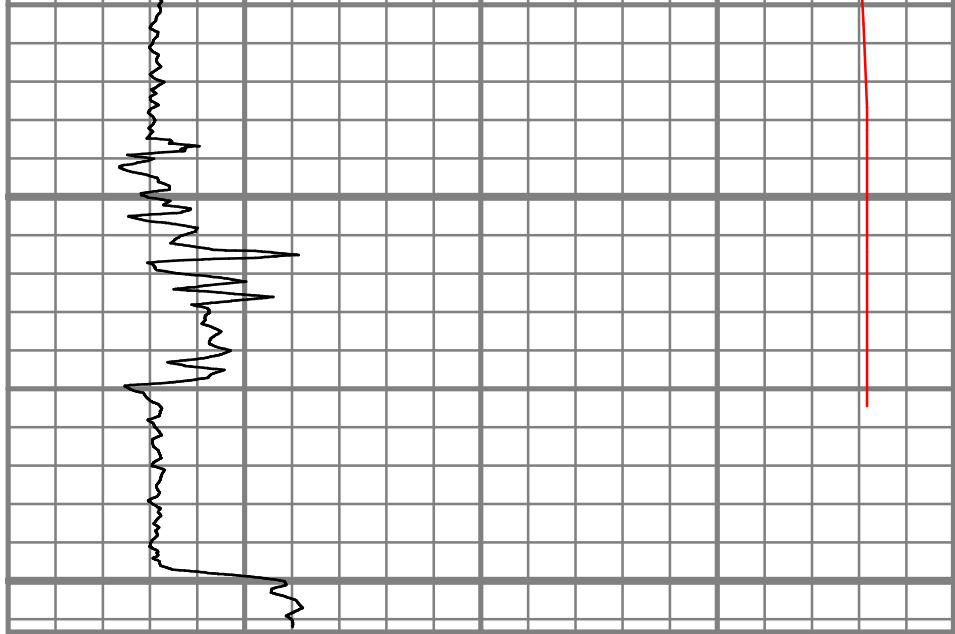


Gamma Ray
 200 Unit = aapi 400

11600

11700

MEASURED DEPTH
 1:500 (ft)



Rate of Penetration
 200 Unit = ft/hr 0

Tool Temperature
 0 Unit = degF 200



ROP
 TEMPERATURE

2" = 100'

FEET MD