



Scientific Drilling

GAMMA RAY

5" = 100'

FEET MD

COMPANY : STONE ENERGY
 WELL : MILLS-WETZEL #1H
 FIELD : HEATHER PROSPECT
 COUNTY : WETZEL
 STATE : WEST VIRGINIA
 COUNTRY : U.S.A.
 API NO. : 47-103-02558-00

COMPANY : STONE ENERGY
 WELL : MILLS-WETZEL #1H
 FIELD : HEATHER PROSPECT
 COUNTY : WETZEL
 STATE : WEST VIRGINIA
 COUNTRY : U.S.A.
 API WELL NO. : 47-103-02558-00

WELL LOCATION
 LAT: 39° 31' 39.314" N Y: 376432.0
 LONG: 80° 40' 25.918" W X:1668891.0

OTHER SERVICES

ROP

TEMPERATURE SURVEYS

SEC:-

TWP:-

RANGE:-

DEPTH REF. : ROTARY TABLE

ELEVATION : 18' Ft

ALTITUDE : 1331' Ft

(ROTARY TABLE - GROUND LEVEL)

(GROUND LEVEL - MEAN SEA LEVEL)

BOREHOLE RECORD

DEVIATION RECORD

HOLE SIZE in	FROM ft	TO ft	INCLINATION deg	FROM ft	TO ft
17-1/2	0	1240	0-1	0	2008
12-1/4	1240	2771	1-92	2008	11112
8-3/4	2771	11112			

CASING RECORD

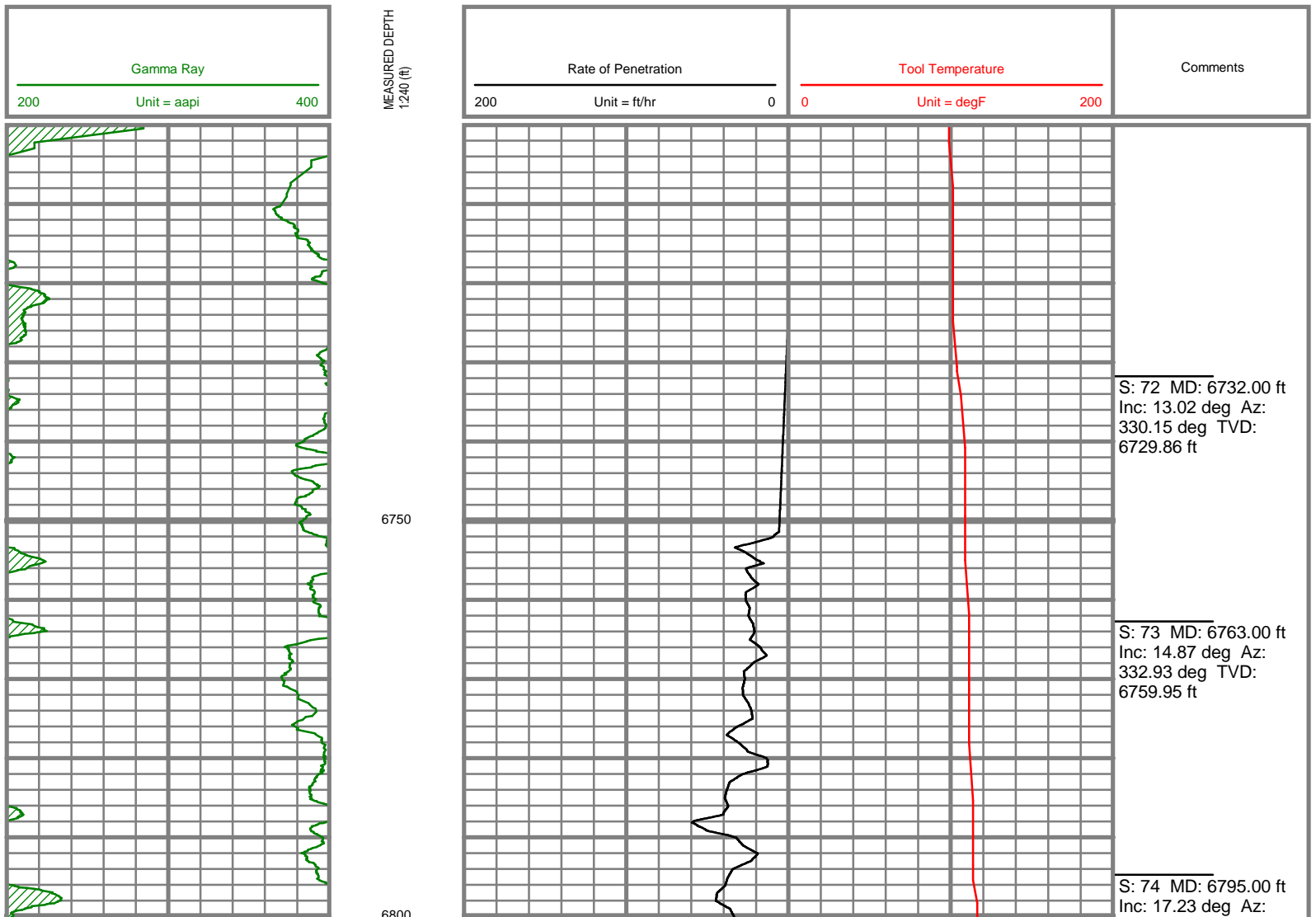
CASING SIZE in	FROM ft	TO ft	DRILLING CO. : SAXON	DISTRICT : PENNSYLVANIA
20	0	43	RIG : 141	
13-3/8	0	1240	LMD UNIT NO. : 118-108	
9-5/8	1240	2771	SPUD DATE : 8/17/2010	
			LMD START DATE : 10/13/2010	
			LMD END DATE : 10/18/2010	
			DEPTH : 6503 ft	
			DEPTH : 11071 ft	
			TOTAL DEPTH : 4568 ft	

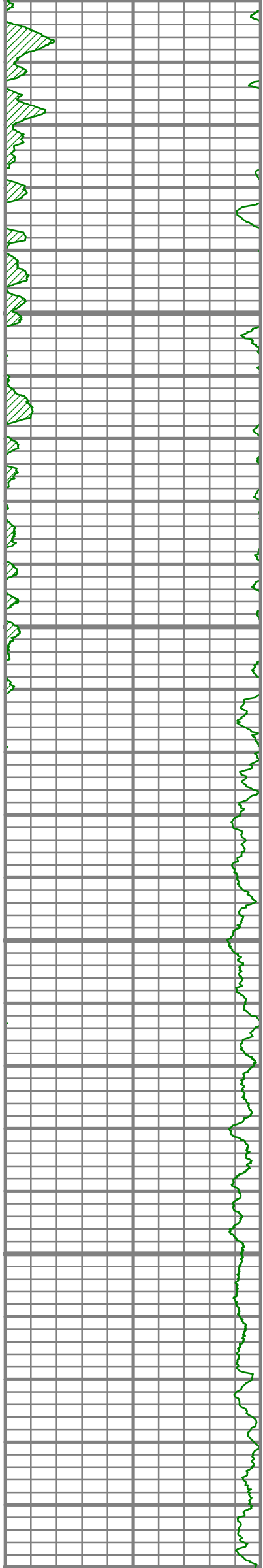
Run Data

RUN NUMBER	1				
START DATE	10/10/2010				
START TIME	00:01				
END DATE	10/19/2010				
END TIME	0700				
DEPTH IN (ft)	6753				
DEPTH OUT (ft)	11112				
LOG TOP (ft)	6503				
LOG BOTTOM (ft)	11071				
HOLE SIZE (in)	8.75				
MUD DATA @ (ft)	10517				
MUD TYPE	WATER BASED				
DENSITY (lb / gal)	14.3				
VISCOSITY (s / qt)	44				
pH	9.5				
FLUID LOSS (cm3 / 30)	4.8				
SALINITY (ppm)	-				
Rm (ohmm @ deg F)	-				
Rmf (ohmm @ deg F)	-				
MAX TEMP (deg F)	148				
Rm @ MAX TEMP (ohmm)	-				
LWD ENGINEER #1	J.JIMENEZ				
LWD ENGINEER #2	S.GALAMBA				
LWD ENGINEER #3	K. WEBB				

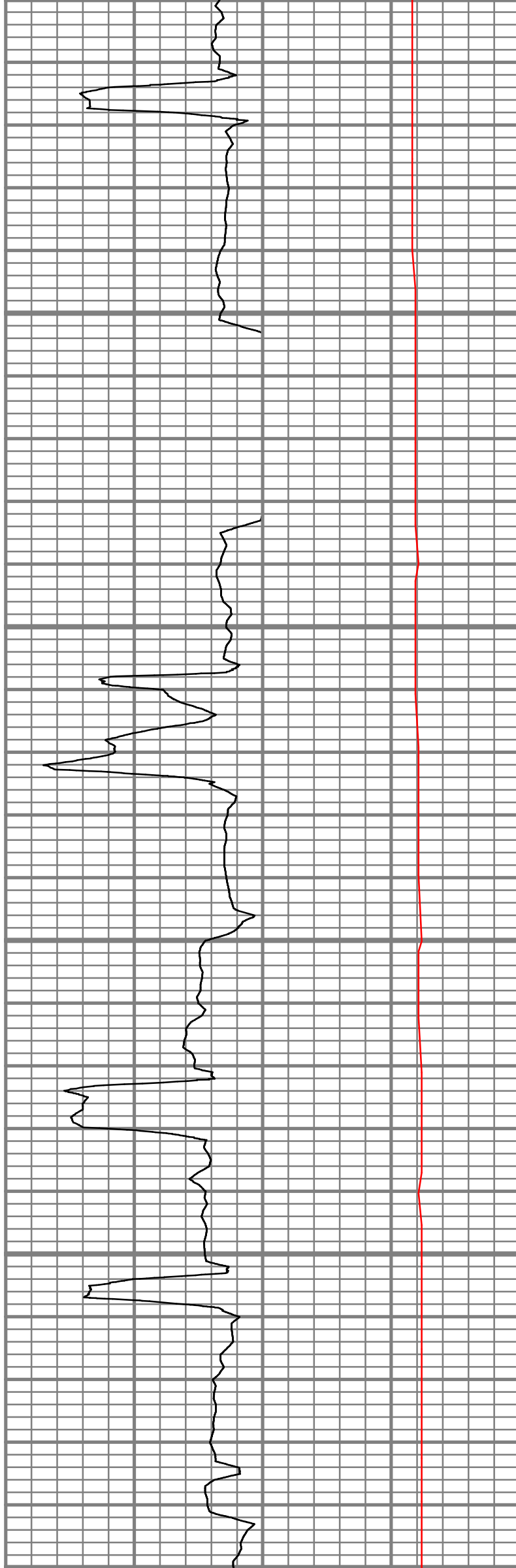
Remarks
STONE ENERGY PRODUCTION AFE# 4640 D
SCIENTIFIC DRILLING INTERNATIONAL JOB# 23D1010125
SCIENTIFIC DRILLING INTERNATIONAL WO# 144793
FLAT AVERAGE OF +/- 1 FT. APPLIED TO GAMMA RAY CURVE.
FLAT AVERAGE OF +/- 1 FT. APPLIED TO ROP CURVE.
ALL REFERENCES IN THE DEPTH TRACK ARE AT BIT DEPTH.
ALL DATA IS MEMORY DATA UNLESS STATED OTHERWISE.
RUN #1 : MWD / GAMMA LOGGING RUN
MP4 CONTROLLER SN: 509 / MWD EYE SN: 187 / GAMMA SN: 186.
BIT TO SENSOR OFFSETS: MAGNETIC = 55' / GAMMA = 41'.

All interpretations are opinions based on inferences from electrical or other measurements and we cannot, and do not guarantee the accuracy or correctness of any interpretations, and we shall not, except in the case of gross or willful negligence on our part, be liable or responsible for any loss, costs, damages or expenses incurred or sustained by anyone resulting from any interpretation made by any of our officers, agents or employees. These interpretations are also subject to our general terms and conditions as set out in our current price schedule.





6850
6900
6950
7000
7050



333.69 deg TVD:
6790.70 ft

S: 75 MD: 6827.00 ft
Inc: 20.48 deg Az:
334.80 deg TVD:
6820.98 ft

S: 76 MD: 6859.00 ft
Inc: 23.70 deg Az:
334.90 deg TVD:
6850.63 ft

S: 77 MD: 6890.00 ft
Inc: 27.22 deg Az:
334.13 deg TVD:
6878.61 ft

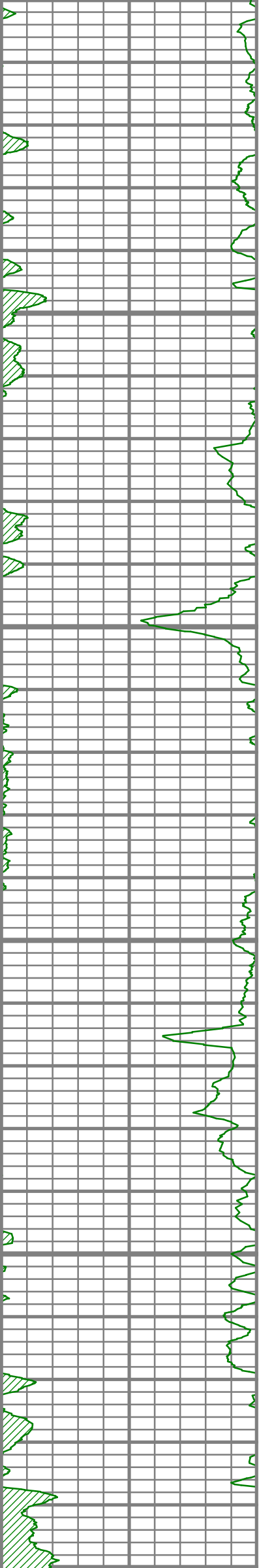
S: 78 MD: 6922.00 ft
Inc: 29.55 deg Az:
331.81 deg TVD:
6906.76 ft

S: 79 MD: 6954.00 ft
Inc: 32.77 deg Az:
330.28 deg TVD:
6934.14 ft

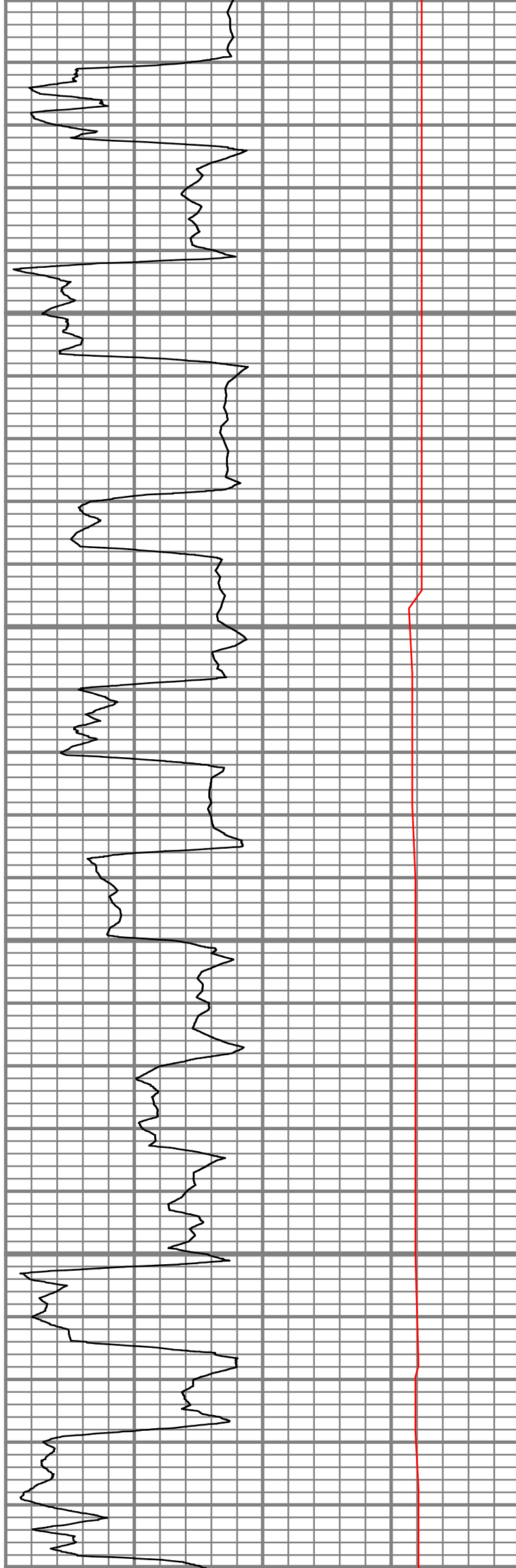
S: 80 MD: 6986.00 ft
Inc: 36.10 deg Az:
328.56 deg TVD:
6960.53 ft

S: 81 MD: 7018.00 ft
Inc: 39.45 deg Az:
327.46 deg TVD:
6985.82 ft





7000
7100
7150
7200
7250
7300



S: 82 MD: 7050.00 ft
Inc: 42.46 deg Az:
327.50 deg TVD:
7009.98 ft

S: 83 MD: 7081.00 ft
Inc: 44.23 deg Az:
327.25 deg TVD:
7032.53 ft

S: 84 MD: 7113.00 ft
Inc: 46.48 deg Az:
328.04 deg TVD:
7055.01 ft

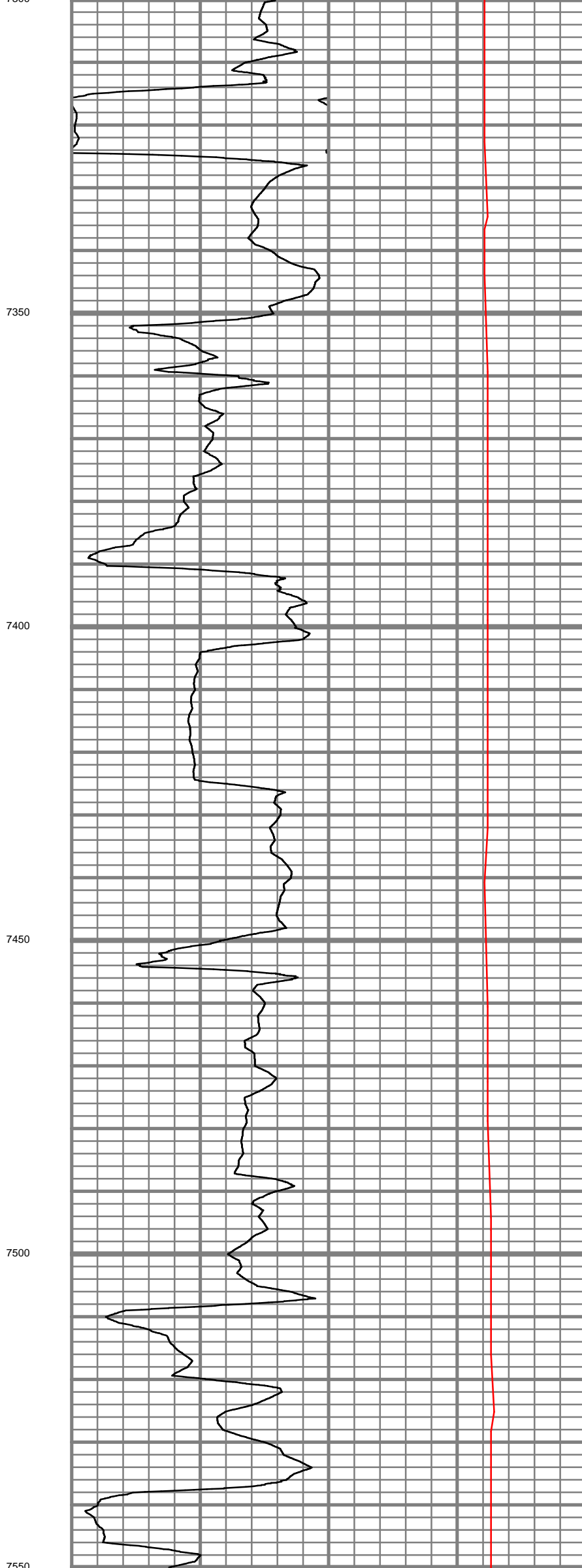
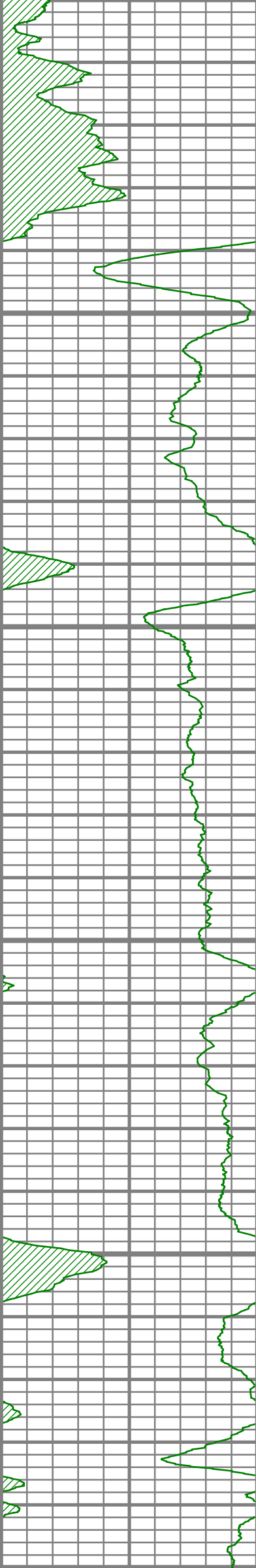
S: 85 MD: 7145.00 ft
Inc: 49.36 deg Az:
328.56 deg TVD:
7076.46 ft

S: 86 MD: 7177.00 ft
Inc: 52.06 deg Az:
328.72 deg TVD:
7096.72 ft

S: 87 MD: 7208.00 ft
Inc: 54.40 deg Az:
328.29 deg TVD:
7115.28 ft

S: 88 MD: 7240.00 ft
Inc: 56.70 deg Az:
328.08 deg TVD:
7133.38 ft

S: 89 MD: 7272.00 ft
Inc: 58.09 deg Az:
328.26 deg TVD:
7150.62 ft



S: 90 MD: 7304.00 ft
Inc: 60.04 deg Az:
328.60 deg TVD:
7167.07 ft

S: 91 MD: 7336.00 ft
Inc: 63.01 deg Az:
328.89 deg TVD:
7182.32 ft

S: 92 MD: 7368.00 ft
Inc: 64.47 deg Az:
328.97 deg TVD:
7196.48 ft

S: 93 MD: 7399.00 ft
Inc: 64.47 deg Az:
330.20 deg TVD:
7209.84 ft

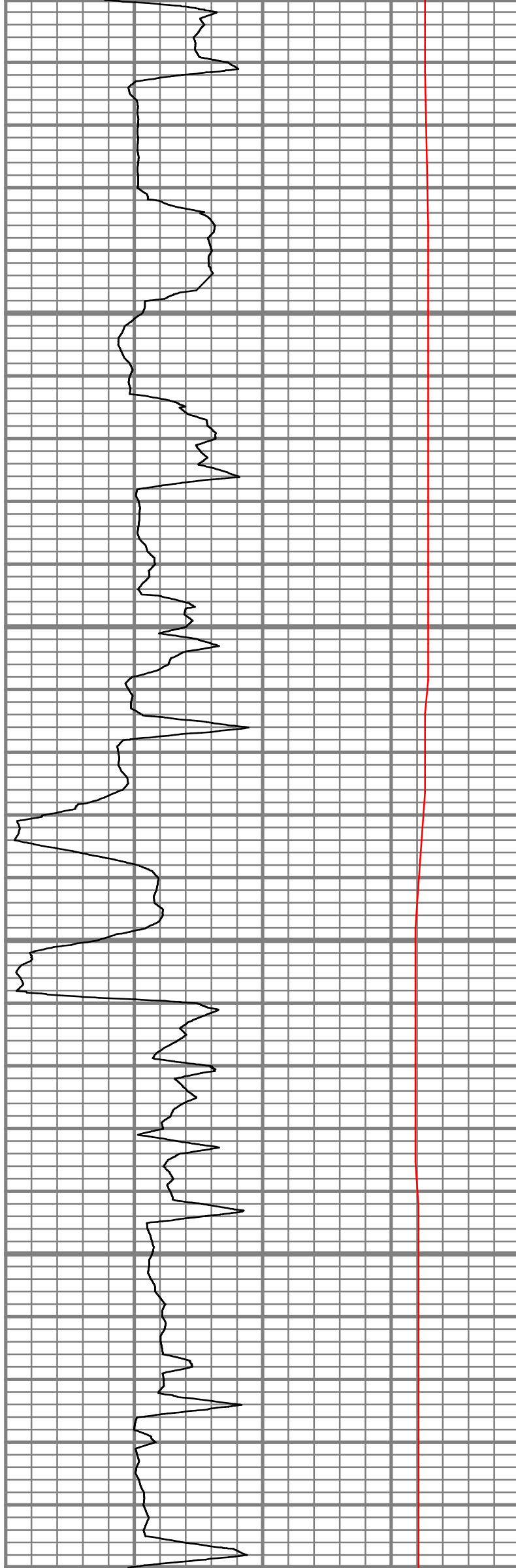
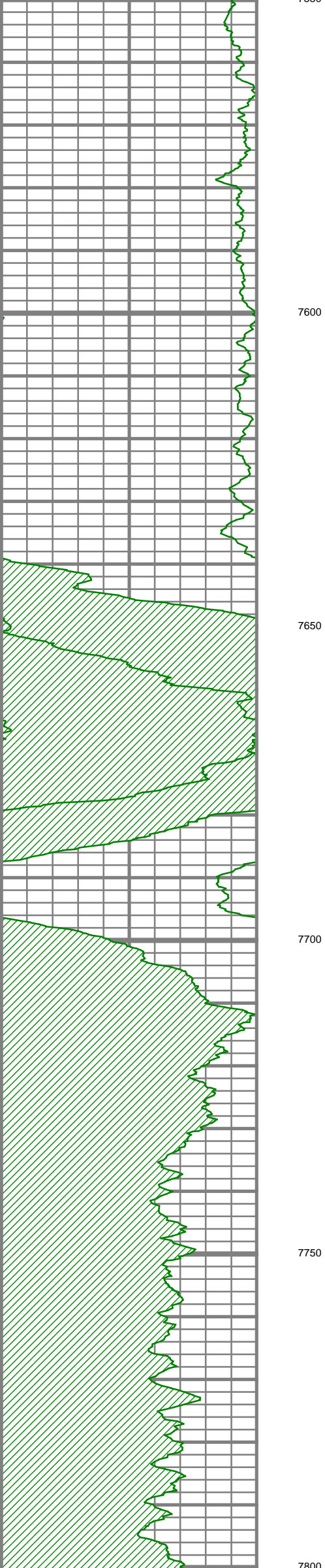
S: 94 MD: 7431.00 ft
Inc: 66.32 deg Az:
330.26 deg TVD:
7223.17 ft

S: 95 MD: 7463.00 ft
Inc: 69.81 deg Az:
330.56 deg TVD:
7235.12 ft

S: 96 MD: 7494.00 ft
Inc: 74.70 deg Az:
330.00 deg TVD:
7244.57 ft

S: 97 MD: 7526.00 ft
Inc: 77.43 deg Az:
329.95 deg TVD:
7252.27 ft





S: 98 MD: 7558.00 ft
Inc: 79.50 deg Az:
329.94 deg TVD:
7258.67 ft

S: 99 MD: 7590.00 ft
Inc: 80.93 deg Az:
329.97 deg TVD:
7264.11 ft

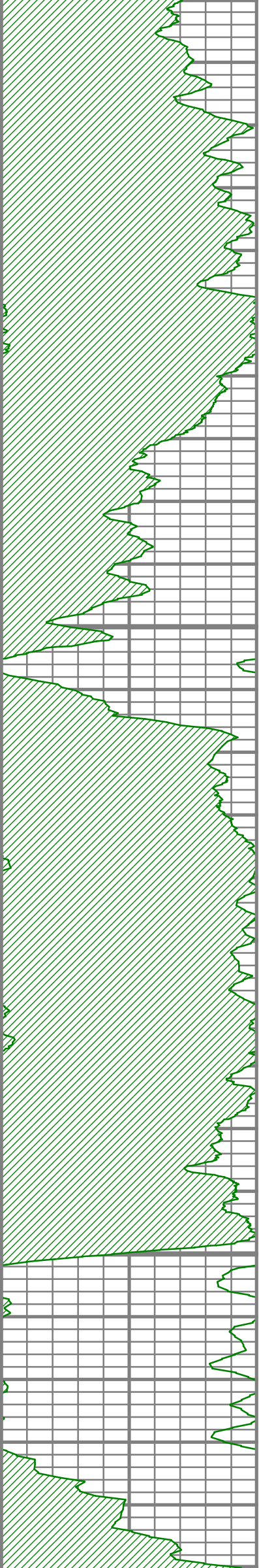
S: 100 MD: 7622.00 ft
Inc: 82.83 deg Az:
329.11 deg TVD:
7268.63 ft

S: 101 MD: 7654.00 ft
Inc: 84.31 deg Az:
328.77 deg TVD:
7272.21 ft

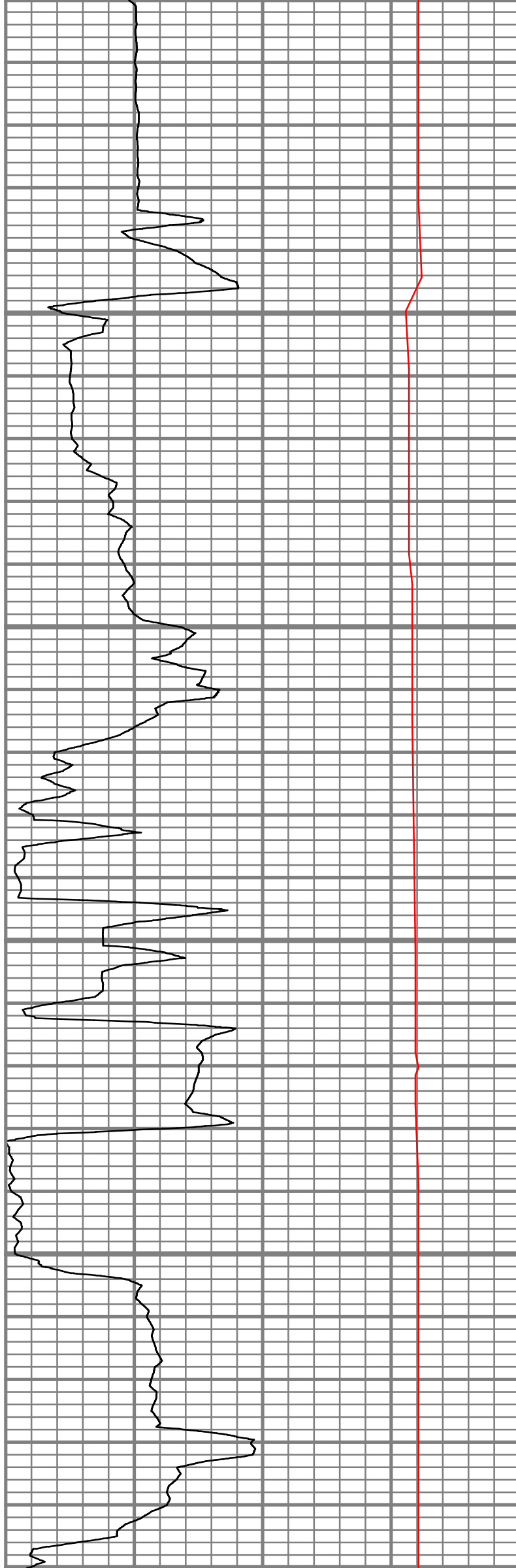
S: 102 MD: 7686.00 ft
Inc: 85.70 deg Az:
328.95 deg TVD:
7275.00 ft

S: 103 MD: 7718.00 ft
Inc: 87.51 deg Az:
328.74 deg TVD:
7276.89 ft

S: 104 MD: 7781.00 ft
Inc: 90.60 deg Az:
329.36 deg TVD:
7277.93 ft



7800
7850
7900
7950
8000
8050



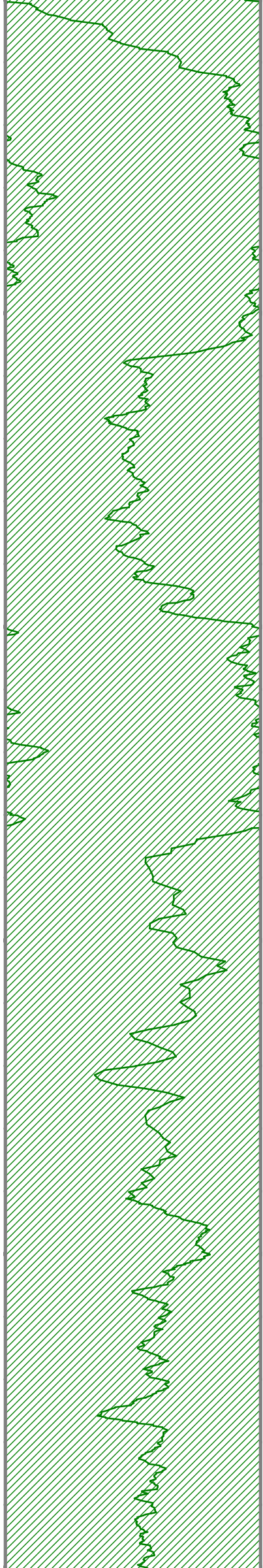
S: 105 MD: 7845.00 ft
Inc: 91.54 deg Az:
329.35 deg TVD:
7276.73 ft

S: 106 MD: 7908.00 ft
Inc: 90.30 deg Az:
325.26 deg TVD:
7275.71 ft

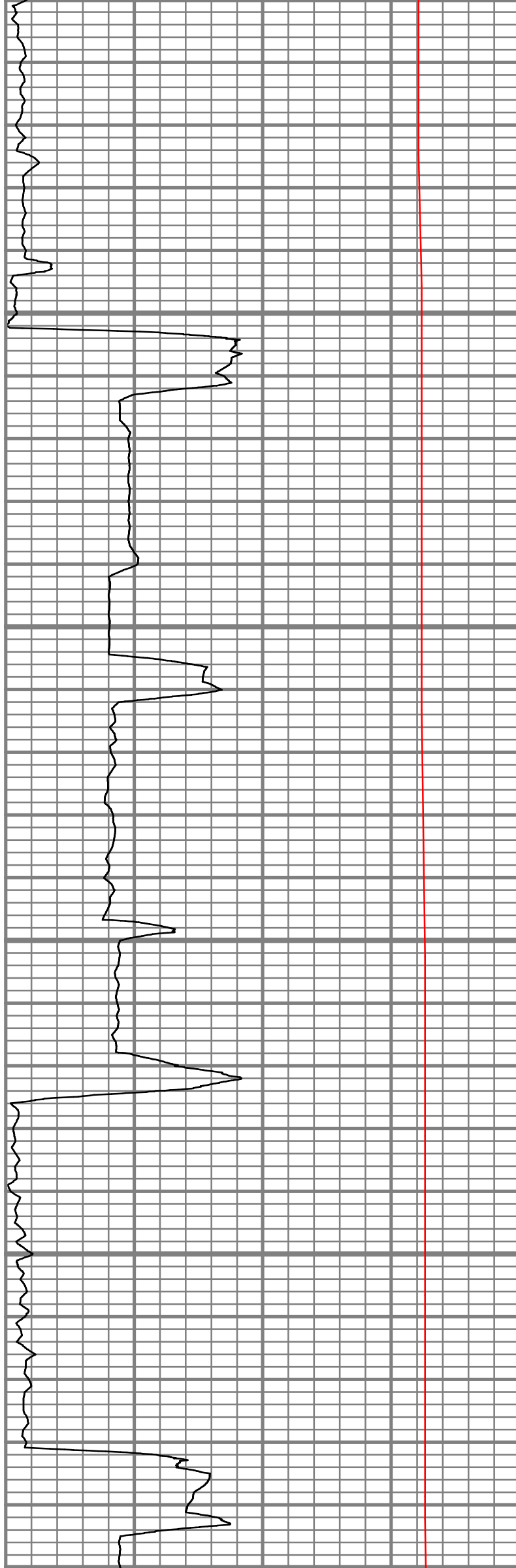
S: 107 MD: 7971.00 ft
Inc: 90.23 deg Az:
325.92 deg TVD:
7275.41 ft

S: 108 MD: 8035.00 ft
Inc: 91.21 deg Az:
327.55 deg TVD:
7274.61 ft





8000
8100
8150
8200
8250
8300

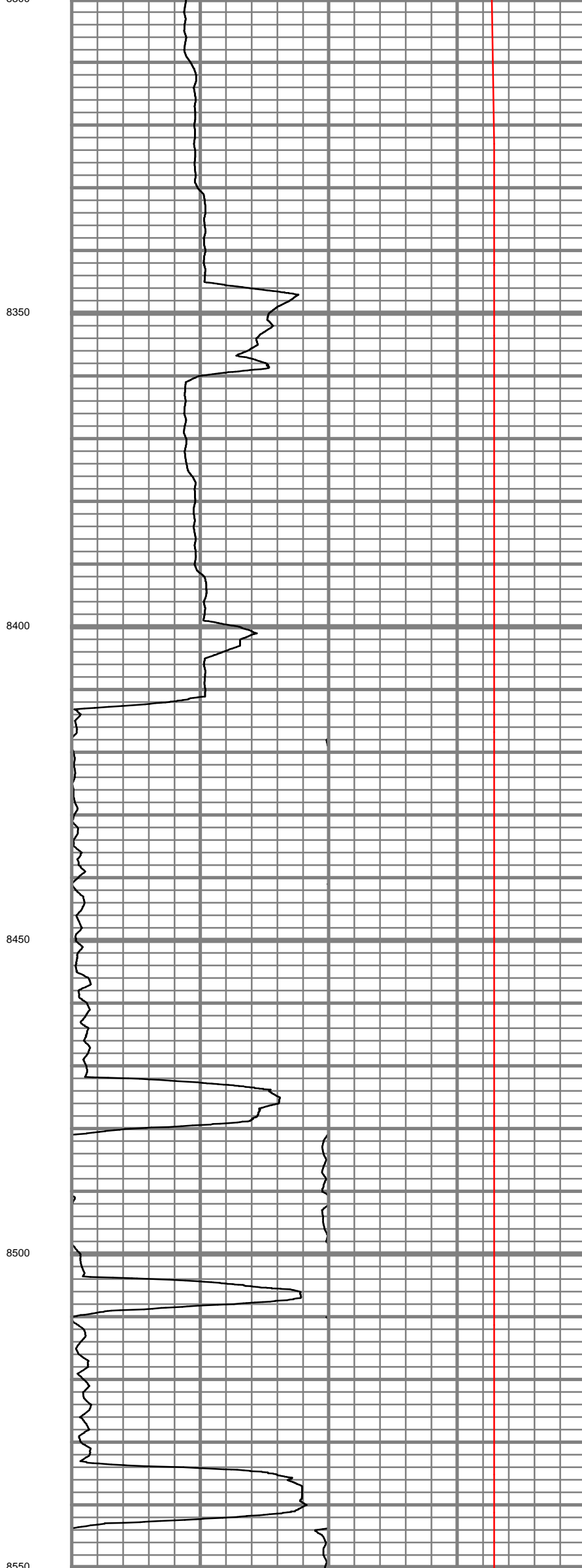
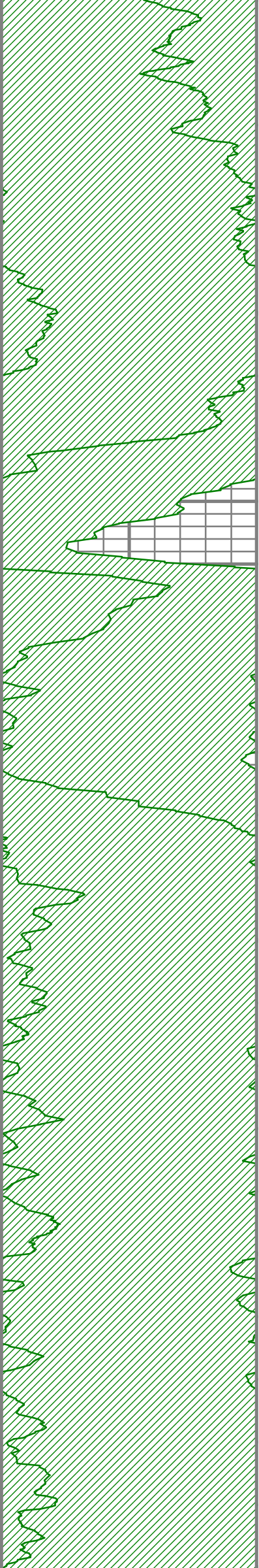


S: 109 MD: 8098.00 ft
Inc: 92.08 deg Az:
327.88 deg TVD:
7272.80 ft

S: 110 MD: 8162.00 ft
Inc: 90.50 deg Az:
327.11 deg TVD:
7271.36 ft

S: 111 MD: 8225.00 ft
Inc: 90.30 deg Az:
326.86 deg TVD:
7270.92 ft

S: 112 MD: 8289.00 ft
Inc: 89.53 deg Az:
326.66 deg TVD:
7271.01 ft



8350

S: 113 MD: 8353.00 ft
Inc: 88.25 deg Az:
328.09 deg TVD:
7272.25 ft

8400

S: 114 MD: 8416.00 ft
Inc: 90.17 deg Az:
329.24 deg TVD:
7273.12 ft

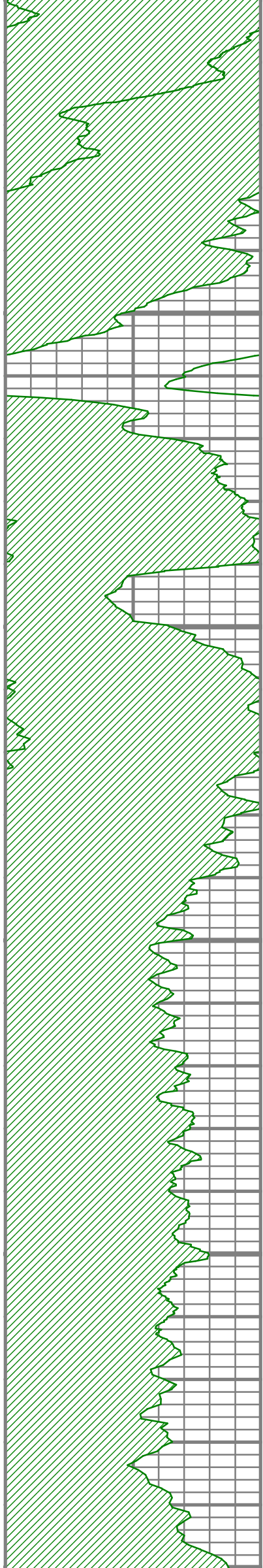
8450

S: 115 MD: 8480.00 ft
Inc: 90.54 deg Az:
329.66 deg TVD:
7272.72 ft

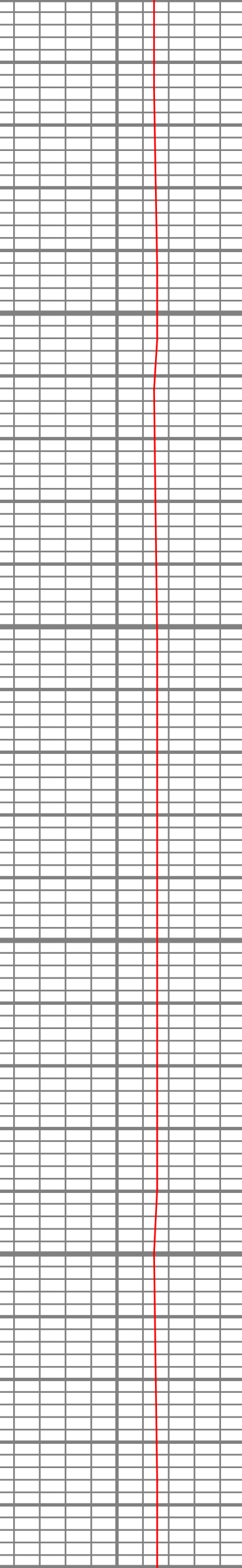
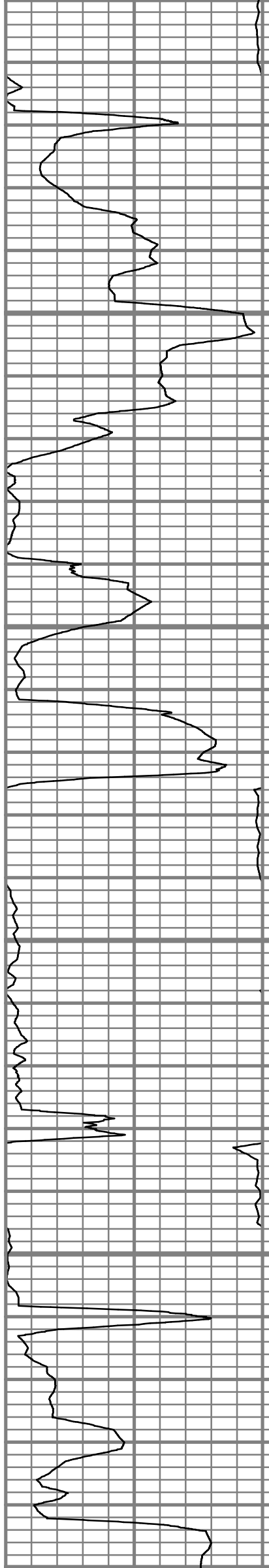
8500

S: 116 MD: 8543.00 ft
Inc: 88.69 deg Az:
329.69 deg TVD:

8550



8600
8650
8700
8750
8800



S: 117 MD: 8607.00 ft
Inc: 89.80 deg Az:
332.21 deg TVD:
7273.99 ft

S: 118 MD: 8671.00 ft
Inc: 87.31 deg Az:
331.91 deg TVD:
7275.60 ft

S: 119 MD: 8734.00 ft
Inc: 87.25 deg Az:
332.46 deg TVD:
7278.59 ft

S: 120 MD: 8798.00 ft

8800

Inc: 89.60 deg Az:
331.17 deg TVD:
7280.35 ft

8850

S: 121 MD: 8861.00 ft
Inc: 90.87 deg Az:
331.46 deg TVD:
7280.09 ft

8900

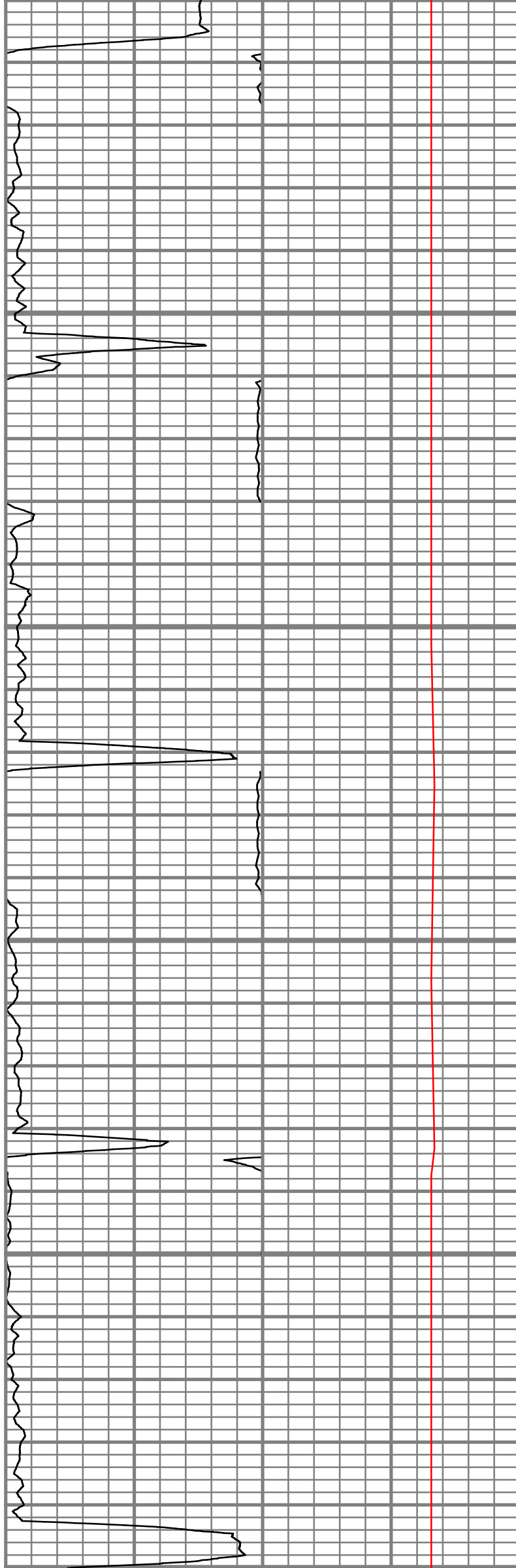
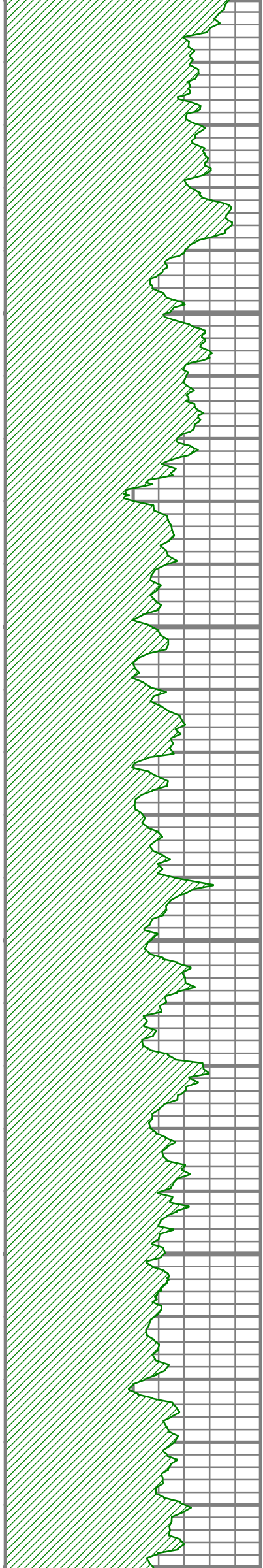
S: 122 MD: 8925.00 ft
Inc: 90.13 deg Az:
330.13 deg TVD:
7279.53 ft

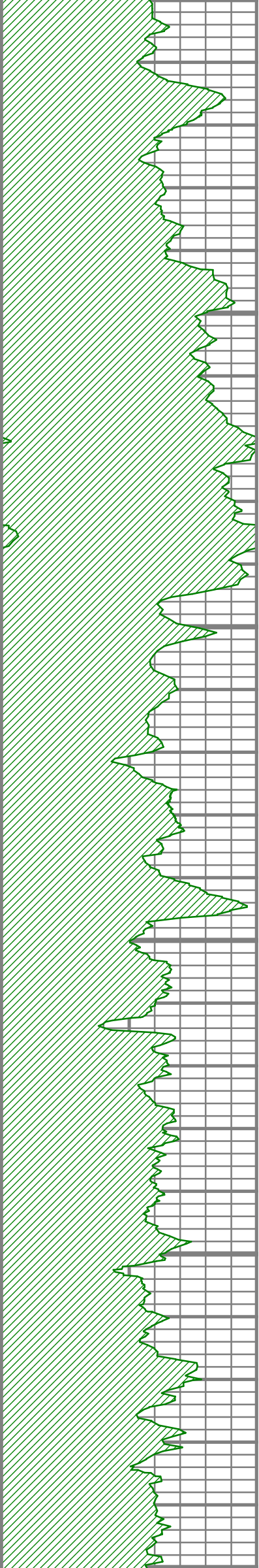
8950

S: 123 MD: 8988.00 ft
Inc: 90.60 deg Az:
330.33 deg TVD:
7279.13 ft

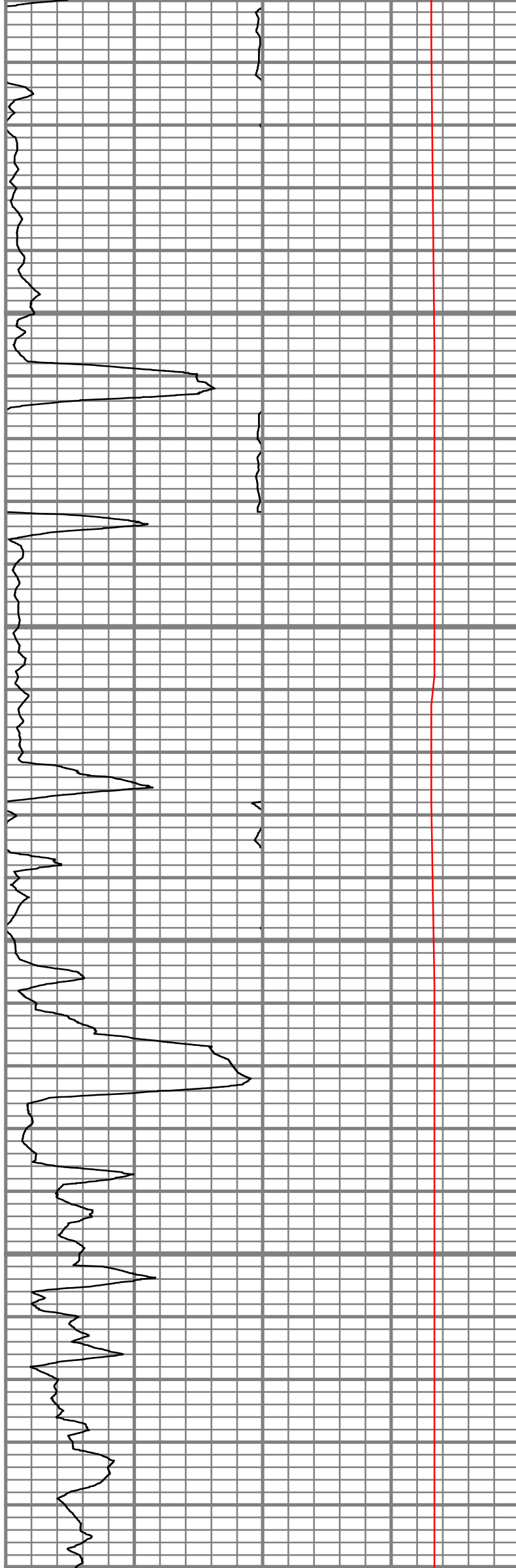
9000

9050





9050
9100
9150
9200
9250
9300

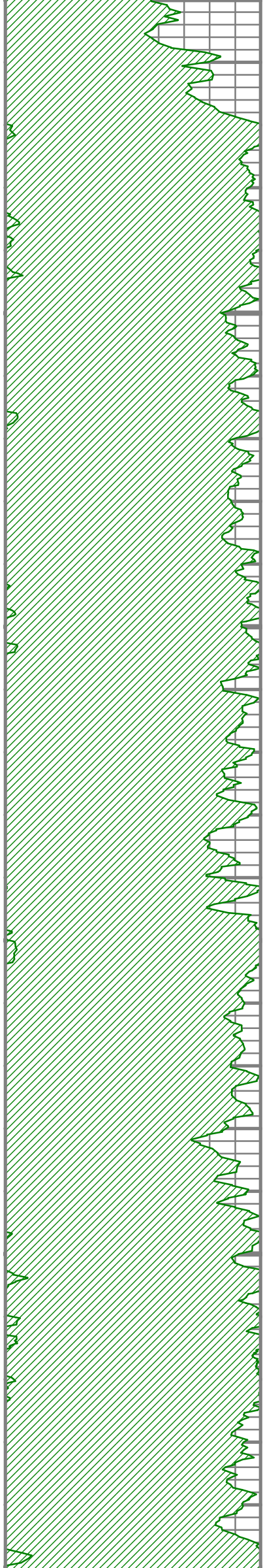


S: 124 MD: 9052.00 ft
Inc: 90.07 deg Az:
329.96 deg TVD:
7278.75 ft

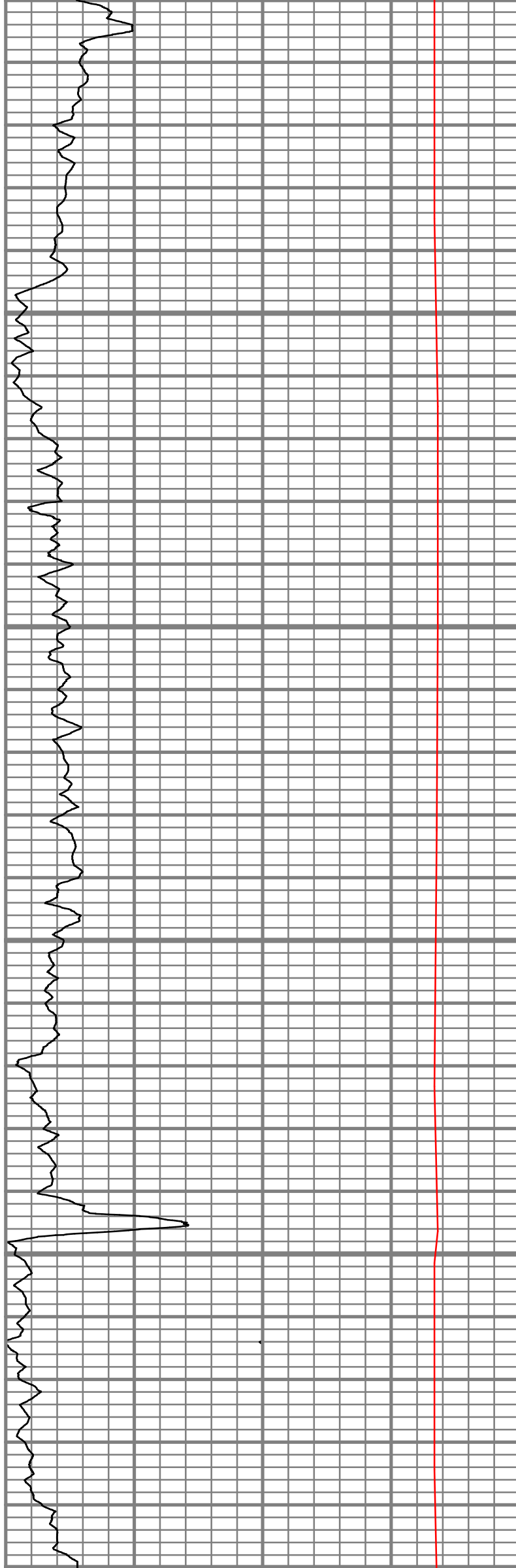
S: 125 MD: 9115.00 ft
Inc: 89.50 deg Az:
329.79 deg TVD:
7278.99 ft

S: 126 MD: 9179.00 ft
Inc: 89.63 deg Az:
329.13 deg TVD:
7279.48 ft

S: 127 MD: 9243.00 ft
Inc: 88.69 deg Az:
329.44 deg TVD:
7280.41 ft



9300
9350
9400
9450
9500
9550

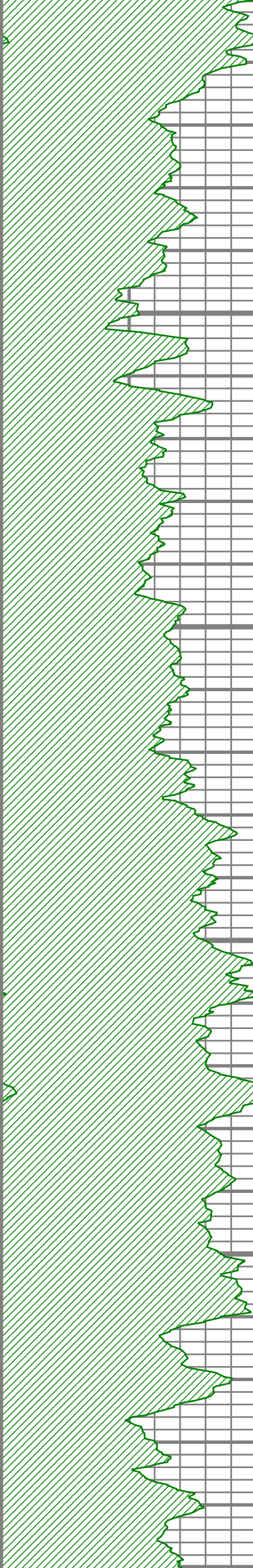


S: 128 MD: 9307.00 ft
Inc: 89.23 deg Az:
329.68 deg TVD:
7281.58 ft

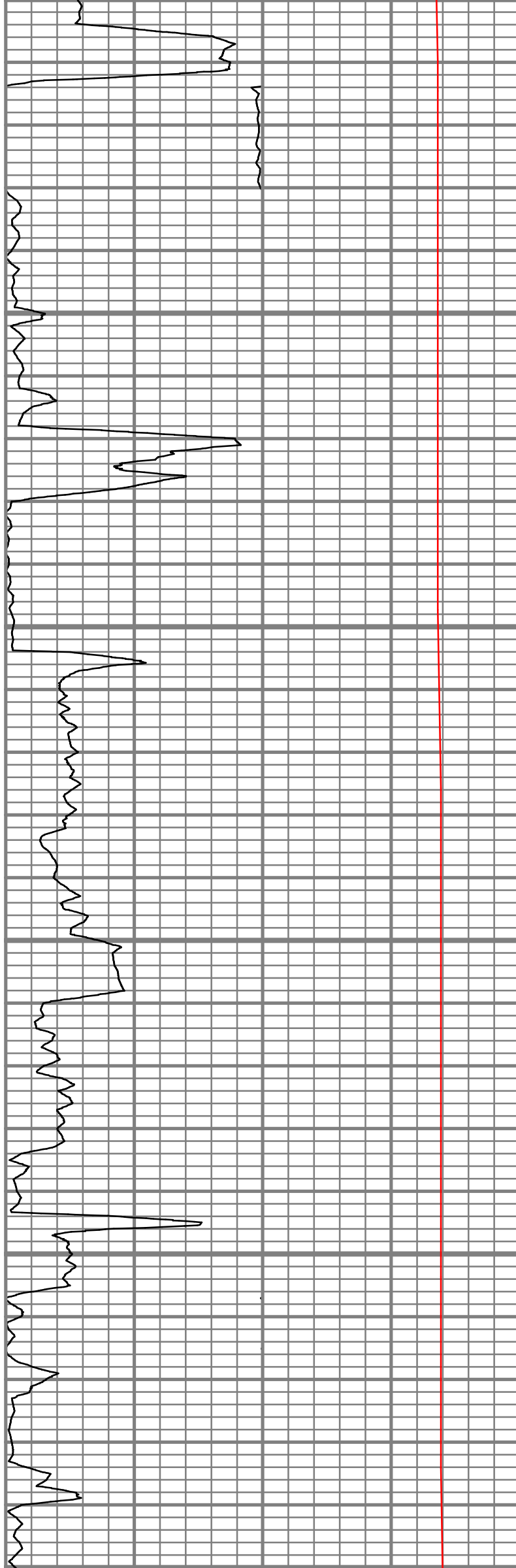
S: 129 MD: 9370.00 ft
Inc: 90.00 deg Az:
329.78 deg TVD:
7282.00 ft

S: 130 MD: 9434.00 ft
Inc: 90.74 deg Az:
330.01 deg TVD:
7281.59 ft

S: 131 MD: 9498.00 ft
Inc: 91.65 deg Az:
329.90 deg TVD:
7280.25 ft



9550
9600
9650
9700
9750
9800

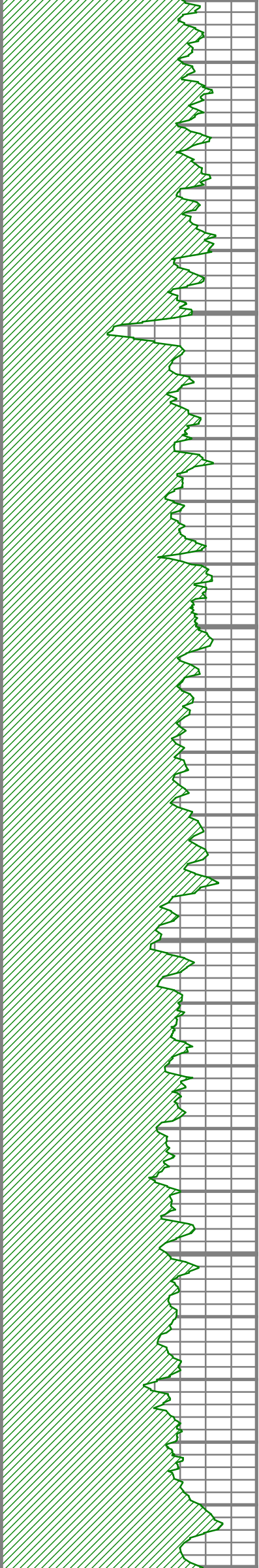


S: 132 MD: 9562.00 ft
Inc: 91.24 deg Az:
329.64 deg TVD:
7278.64 ft

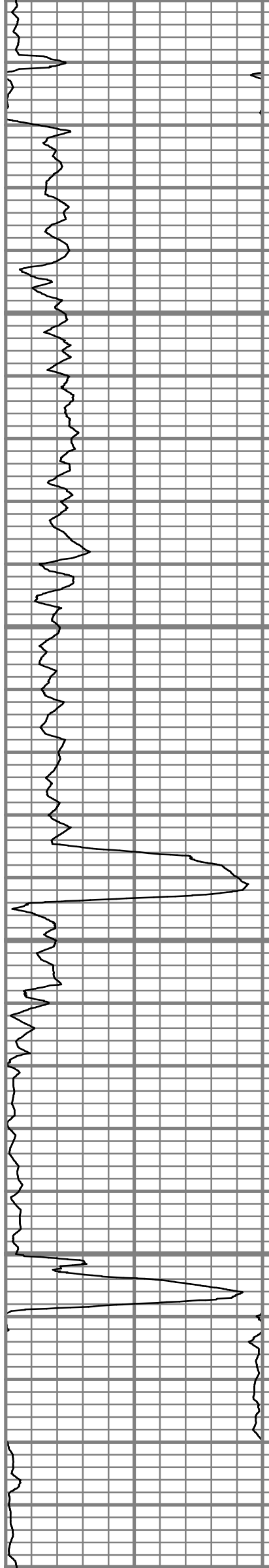
S: 133 MD: 9625.00 ft
Inc: 89.77 deg Az:
328.47 deg TVD:
7278.09 ft

S: 134 MD: 9689.00 ft
Inc: 89.97 deg Az:
328.46 deg TVD:
7278.24 ft

S: 135 MD: 9753.00 ft
Inc: 90.50 deg Az:
328.66 deg TVD:
7277.98 ft



9800
9850
9900
9950
10000
10050



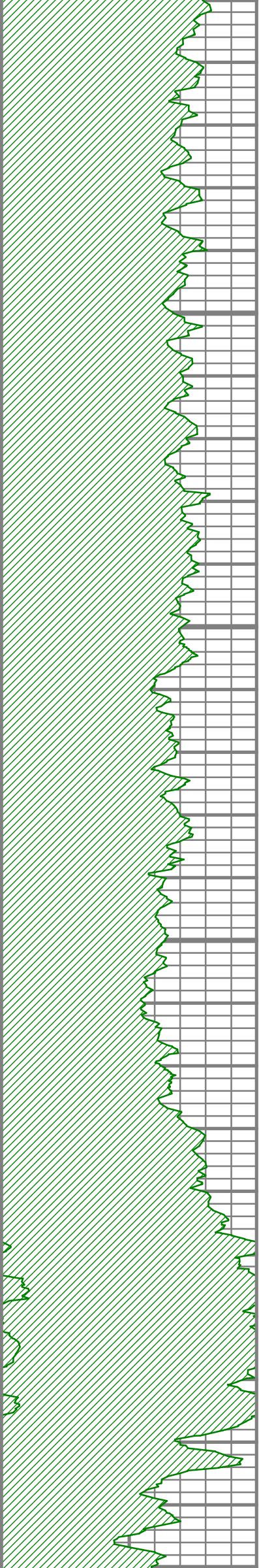
S: 136 MD: 9816.00 ft
Inc: 90.74 deg Az:
328.35 deg TVD:
7277.29 ft

S: 137 MD: 9880.00 ft
Inc: 91.48 deg Az:
328.43 deg TVD:
7276.05 ft

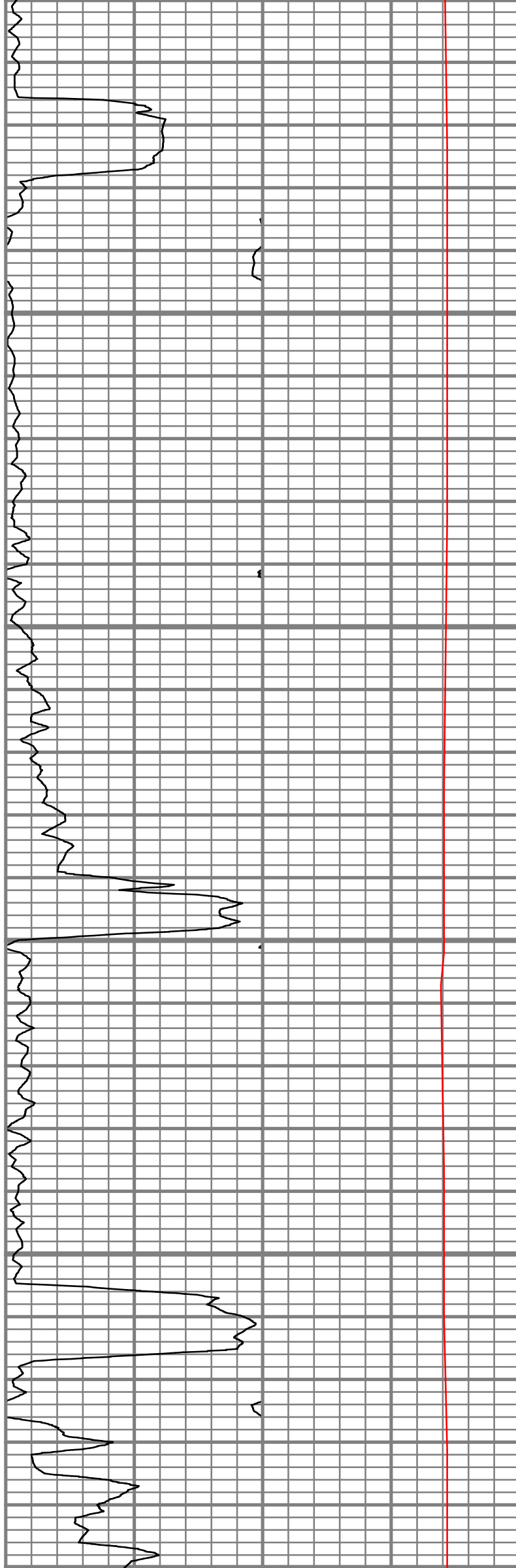
S: 138 MD: 9944.00 ft
Inc: 91.07 deg Az:
328.46 deg TVD:
7274.63 ft

S: 139 MD: 10007.00 ft
Inc: 90.34 deg Az:
327.11 deg TVD:
7273.85 ft





10050
10100
10150
10200
10250
10300

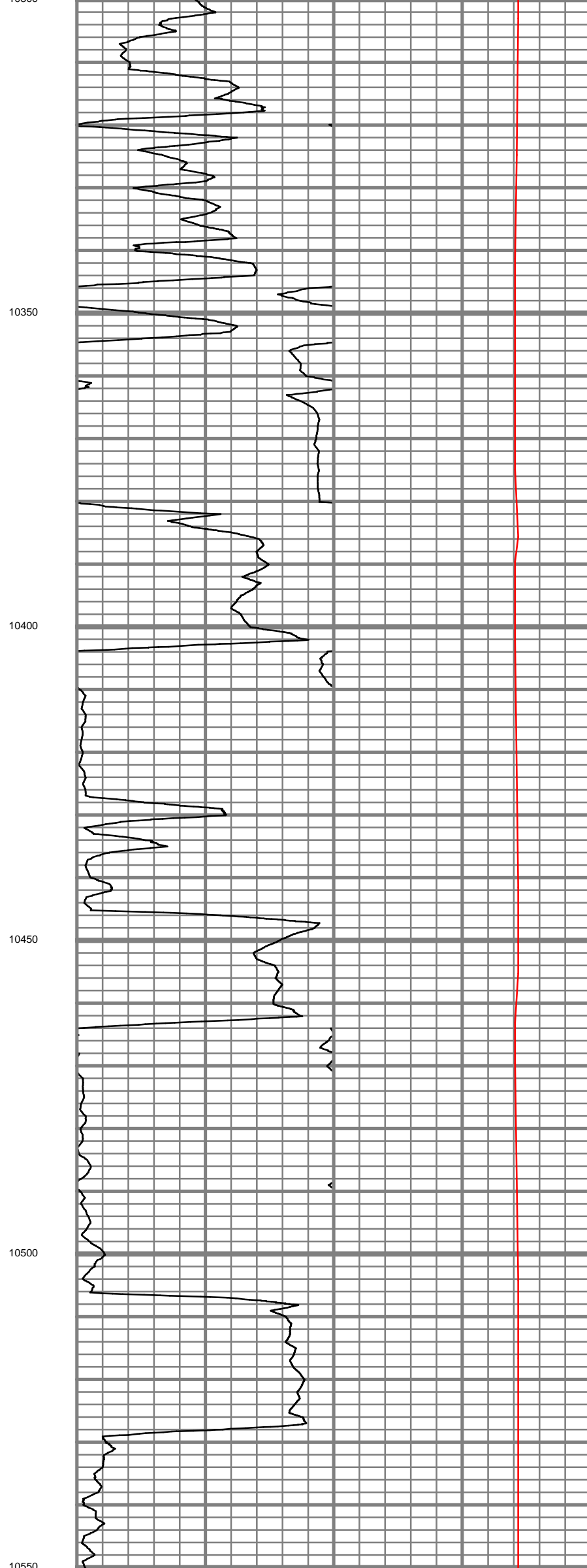
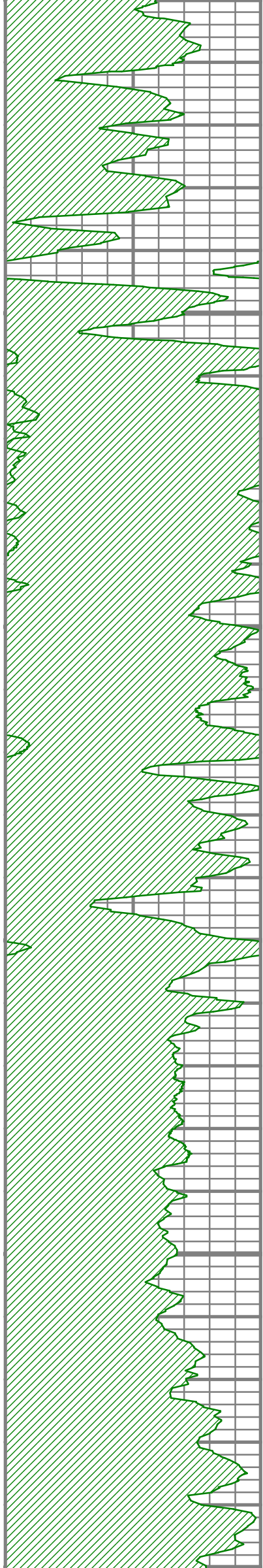


S: 140 MD: 10071.00 ft
Inc: 90.57 deg Az:
326.73 deg TVD:
7273.35 ft

S: 141 MD: 10135.00 ft
Inc: 91.21 deg Az:
326.04 deg TVD:
7272.36 ft

S: 142 MD: 10198.00 ft
Inc: 91.48 deg Az:
325.90 deg TVD:
7270.88 ft

S: 143 MD: 10261.00 ft
Inc: 91.98 deg Az:
327.22 deg TVD:
7268.98 ft

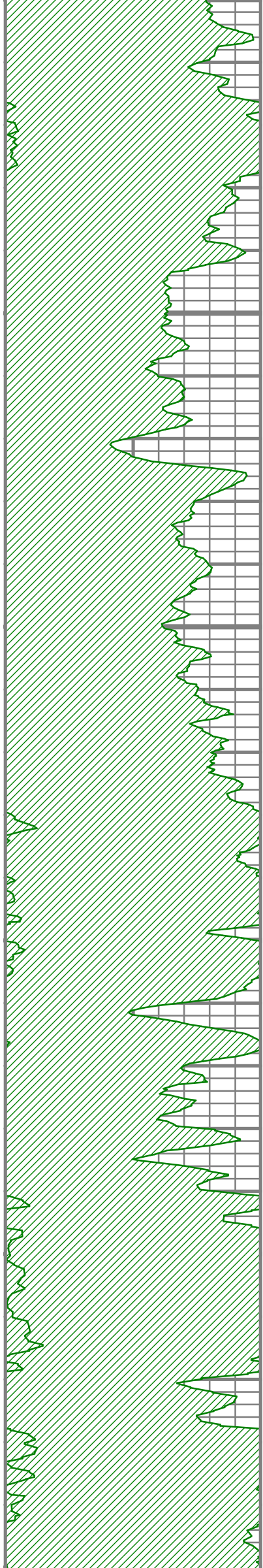


S: 144 MD: 10324.00 ft
Inc: 89.80 deg Az:
322.63 deg TVD:
7268.00 ft

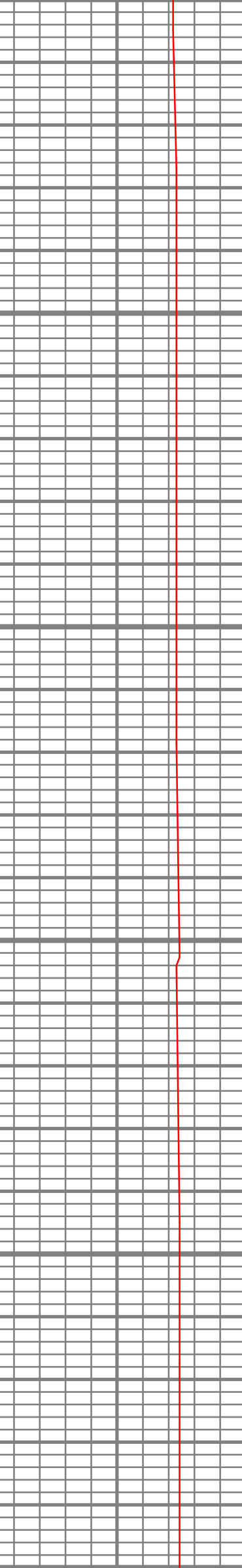
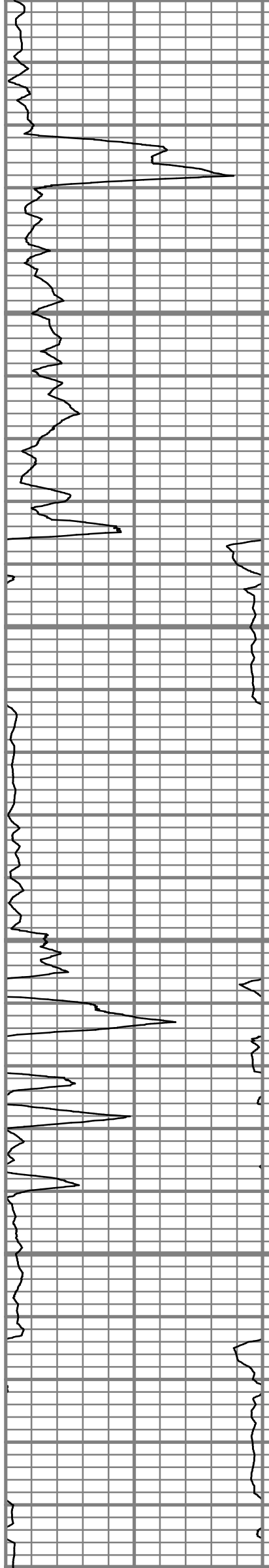
S: 145 MD: 10388.00 ft
Inc: 89.73 deg Az:
321.61 deg TVD:
7268.26 ft

S: 146 MD: 10452.00 ft
Inc: 89.73 deg Az:
323.18 deg TVD:
7268.56 ft

S: 147 MD: 10515.00 ft
Inc: 90.20 deg Az:
326.30 deg TVD:
7268.60 ft



10550
10600
10650
10700
10750
10800

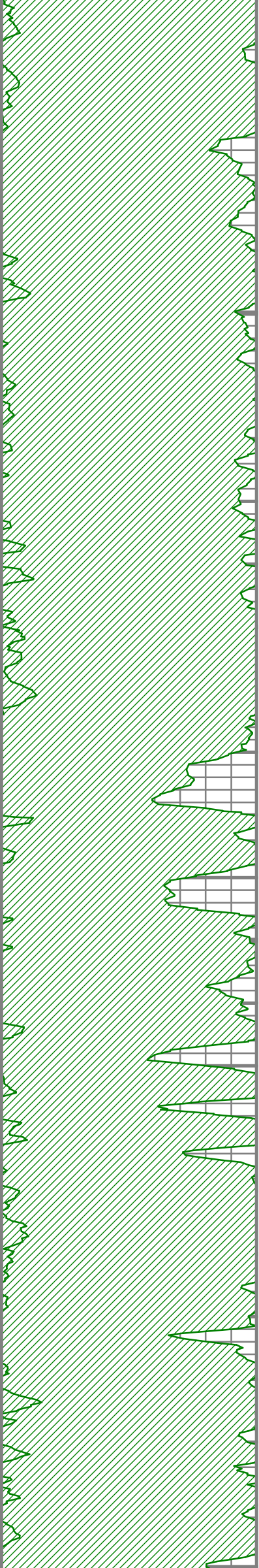


S: 148 MD: 10579.00 ft
Inc: 90.67 deg Az:
328.39 deg TVD:
7268.11 ft

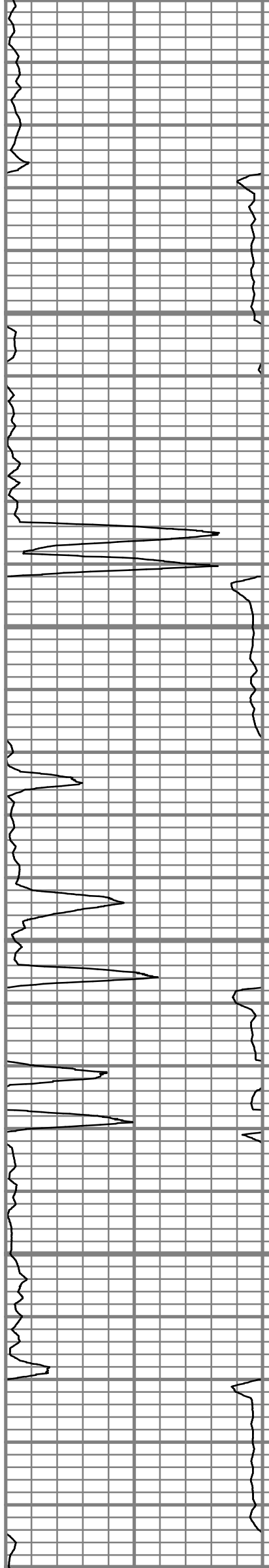
S: 149 MD: 10642.00 ft
Inc: 91.11 deg Az:
328.95 deg TVD:
7267.13 ft

S: 150 MD: 10706.00 ft
Inc: 91.64 deg Az:
329.13 deg TVD:
7265.59 ft

S: 151 MD: 10770.00 ft
Inc: 90.10 deg Az:
326.61 deg TVD:
7264.62 ft



10850
10900
10950
11000
11050



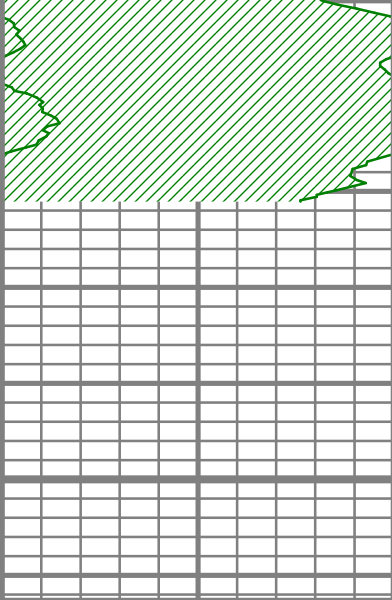
S: 152 MD: 10834.00 ft
Inc: 90.44 deg Az:
326.66 deg TVD:
7264.32 ft

S: 153 MD: 10897.00 ft
Inc: 91.24 deg Az:
327.30 deg TVD:
7263.40 ft

S: 154 MD: 10961.00 ft
Inc: 90.00 deg Az:
325.08 deg TVD:
7262.70 ft

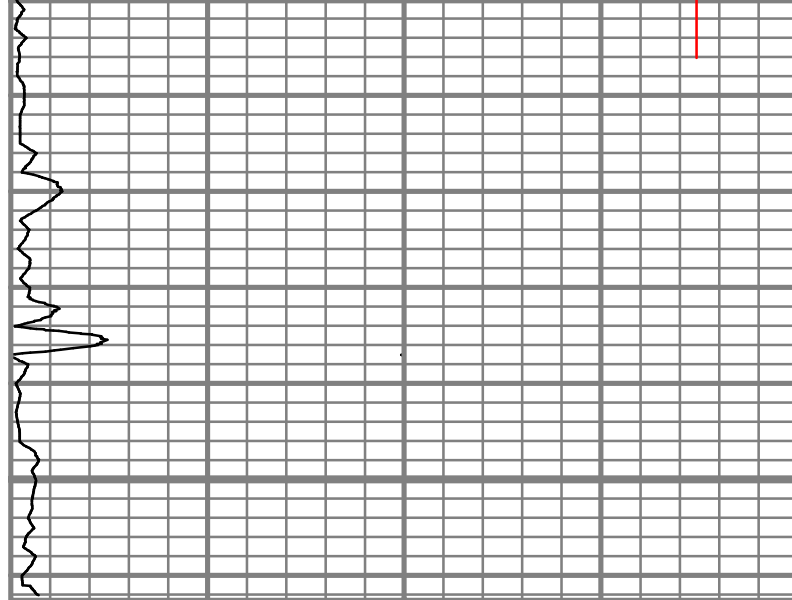
S: 155 MD: 11025.00 ft
Inc: 90.20 deg Az:
324.53 deg TVD:
7262.59 ft





Gamma Ray		
200	Unit = aapi	400

MEASURED DEPTH
1240 (ft)



Rate of Penetration		
200	Unit = ft/hr	0

Tool Temperature		
0	Unit = degF	200

S: 156 MD: 11057.00 ft
 Inc: 90.30 deg Az:
 324.89 deg TVD:
 7262.45 ft

Comments



5" = 100'

F E E T M D