



GAMMA RAY LOG

5" = 100'

FEET MD

COMPANY : STONE ENERGY WELL : TALKINGTON-NICE #1H FIELD : MARY COUNTY : WETZEL STATE : WEST VIRGINIA COUNTRY : U.S.A. API NO. : 47-103-02612	COMPANY : STONE ENERGY WELL : TALKINGTON-NICE #1H FIELD : MARY COUNTY : WETZEL STATE : WEST VIRGINIA COUNTRY : U.S.A. API WELL NO. : 47-103-02612	
WELL LOCATION LAT: 39° 40' 23.527"N X: 1,623,590.0 LONG: 80° 50' 14.208"W Y: 430,108.0 SEC:- TWP:- RANGE:-		OTHER SERVICES ROP TEMPERATURE SURVEYS
DEPTH REF. : ROTARY TABLE ELEVATION : 18 ft ROTARY TABLE - GROUND LEVEL ALTITUDE : 1300 ft GROUND LEVEL - MEAN SEA LEVEL		

BOREHOLE RECORD			DEVIATION RECORD		
HOLE SIZE in	FROM ft	TO ft	INCLINATION deg	FROM ft	TO ft
17.5	0	1275	0-1	0	5710
12.25	1275	2587	1-90	5710	7175
8.75	2587	12421	88-92	7175	12421

CASING RECORD		
CASING SIZE in	FROM ft	TO ft
20	0	51
13.375	51	1283
9.625	1283	2595

DRILLING CO. : SAXON
 RIG : 141
 LWD UNIT NO. : 118-108 DISTRICT : NORTHEAST
 SPUD DATE : 2/11/2011
 LWD START DATE : 6/16/2011 DEPTH : 5483 ft
 LWD END DATE : 6/23/2011 DEPTH : 12421 ft
 TOTAL DEPTH : 12421 ft

Run Data	
RUN NUMBER	
1	
START DATE	6/16/2011
START TIME	08:00
END DATE	6/23/2011
END TIME	14:30
DEPTH IN (ft)	5483
DEPTH OUT (ft)	12421
LOG TOP (ft)	5441
LOG BOTTOM (ft)	12380
HOLE SIZE (in)	8.75
MUD DATA @ (ft)	9722
MUD TYPE	WATER BASED
DENSITY (lb / gal)	12.8
VISCOSITY (s / qt)	44
pH	9.9
FLUID LOSS (cm3 / 30min)	5.4
SALINITY (ppm)	-
Rm (ohmm @ deg F)	-
Rmf (ohmm @ deg F)	-
MAX TEMP (deg F)	146
Rm @ MAX TEMP (ohmm)	-
LWD ENGINEER #1	J.JIMENEZ
LWD ENGINEER #2	S.GALAMBA
LWD ENGINEER #3	

Remarks

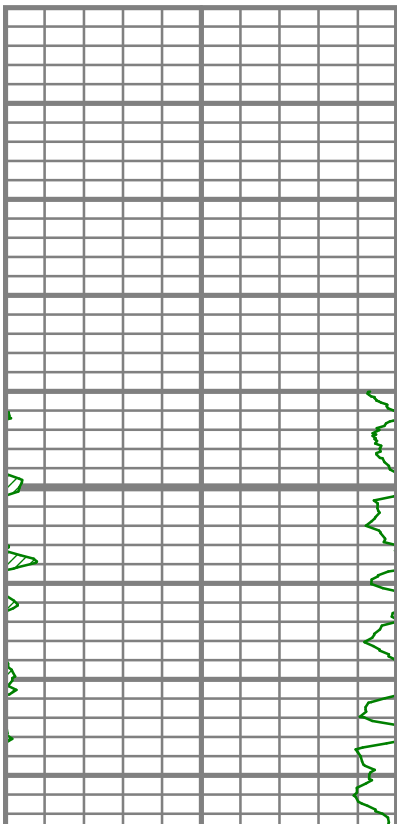
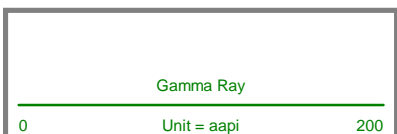
STONE ENERGY PRODUCTION API# 47-103-02612
 SCIENTIFIC DRILLING INTERNATIONAL JOB# 23D0611099
 SCIENTIFIC DRILLING INTERNATIONAL WO# 144932

FLAT AVERAGE OF 1 FT. APPLIED TO GAMMA RAY CURVE
 FLAT AVERAGE OF 1 FT. APPLIED TO ROP CURVE

ALL REFERENCES IN THE DEPTH TRACK ARE AT BIT DEPTH.
 ALL DATA IS MEMORY DATA UNLESS STATED OTHERWISE.

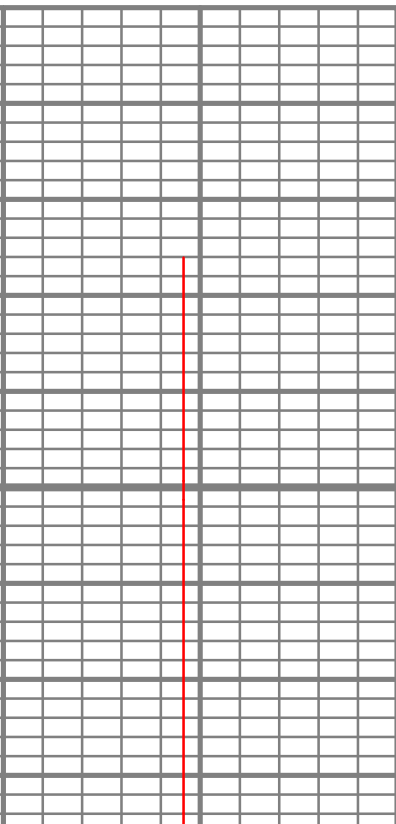
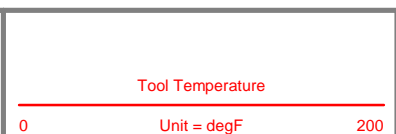
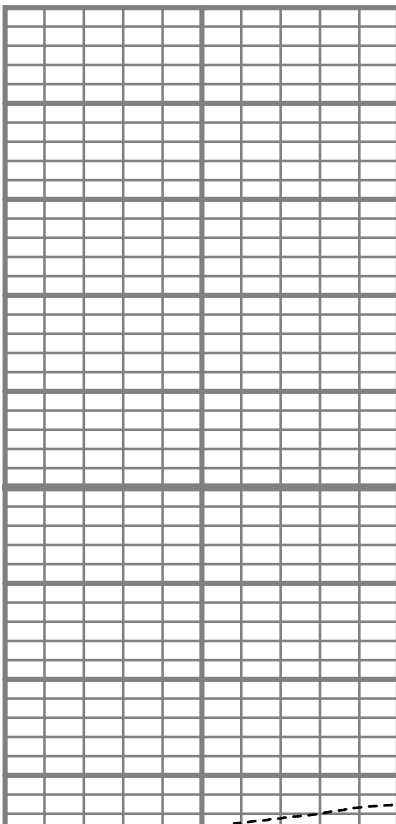
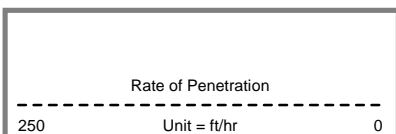
RUN # 1: MWD/ GAMMA LOGGING RUN
 MP5 CONTROLLER SN:707 / MWD EYE SN:429 / GAMMA SN: 151
 BIT TO SENSOR OFFSETS: MAG = 56' / GAMMA = 42'

All interpretations are opinions based on inferences from electrical or other measurements and we cannot, and do not guarantee the accuracy or correctness of any interpretations, and we shall not, except in the case of gross or willful negligence on our part, be liable or responsible for any loss, costs, damages or expenses incurred or sustained by anyone resulting from any interpretation made by any of our officers, agents or employees. These interpretations are also subject to our general terms and conditions as set out in our current price schedule.

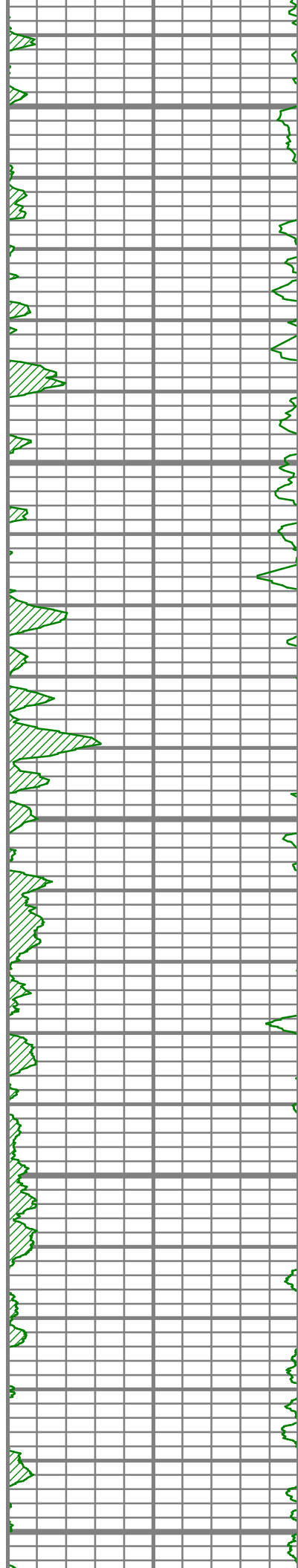


MEASURED DEPTH
1240 (ft)

5450



Comments
S: 54 MD: 5399.99 ft Inc: 1.29 deg Az: 46.19 deg TVD: 5399.43 ft



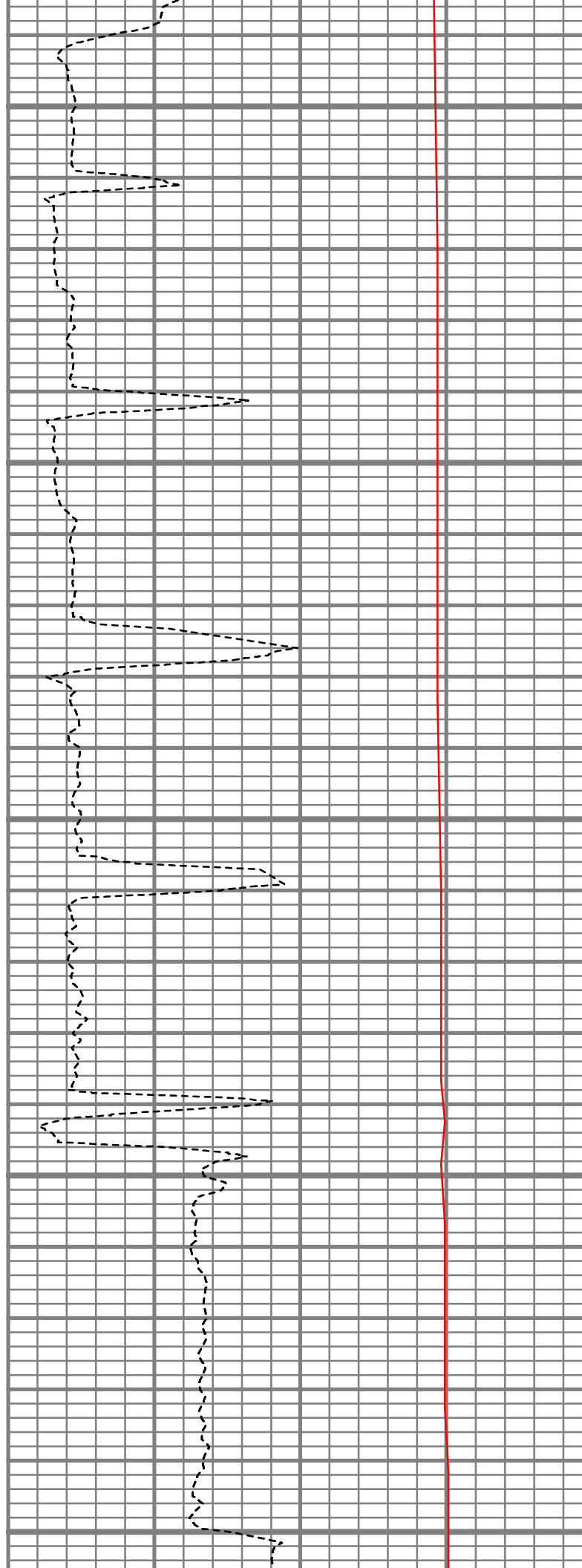
5500

5550

5600

5650

5700



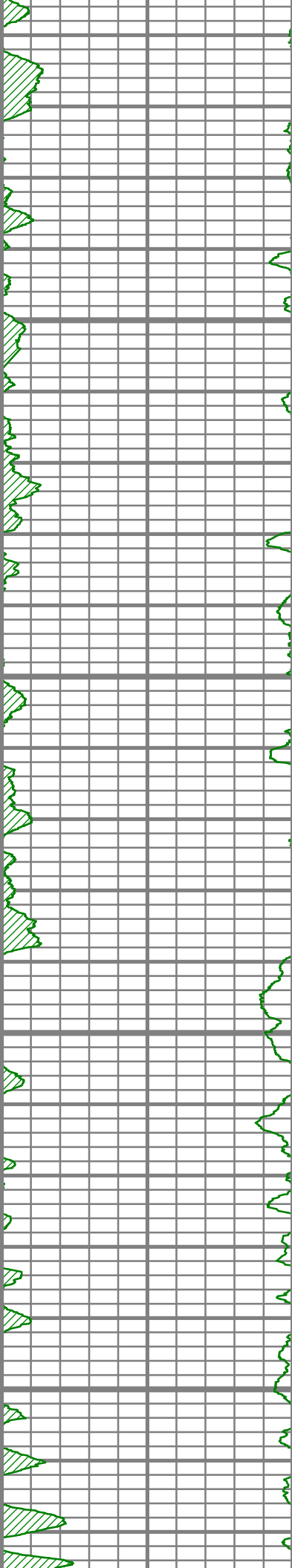
S: 55 MD: 5499.99 ft
Inc: 0.89 deg Az: 47.51
deg TVD: 5499.41 ft

S: 56 MD: 5599.99 ft
Inc: 0.88 deg Az: 46.10
deg TVD: 5599.40 ft

S: 57 MD: 5622.99 ft
Inc: 0.86 deg Az: 44.34
deg TVD: 5622.39 ft

S: 58 MD: 5647.00 ft
Inc: 0.69 deg Az: 25.95
deg TVD: 5646.40 ft

S: 59 MD: 5678.00 ft
Inc: 0.41 deg Az: 39.84
deg TVD: 5677.40 ft

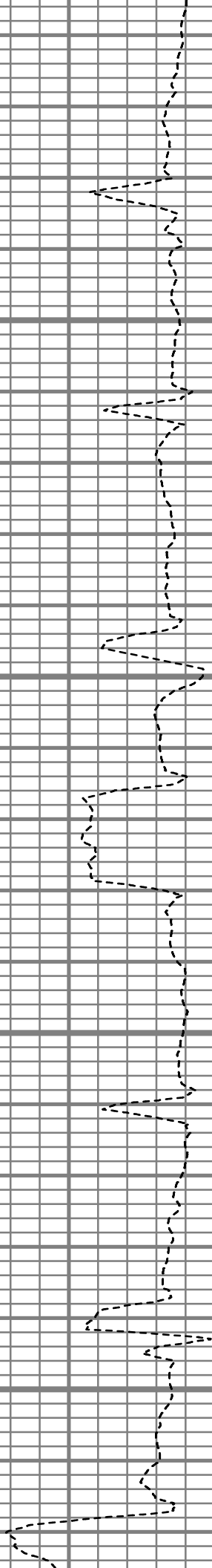


5750

5800

5850

5900



S: 60 MD: 5710.00 ft
Inc: 1.28 deg Az:
209.99 deg TVD:
5709.40 ft

S: 61 MD: 5742.00 ft
Inc: 3.81 deg Az:
213.30 deg TVD:
5741.36 ft

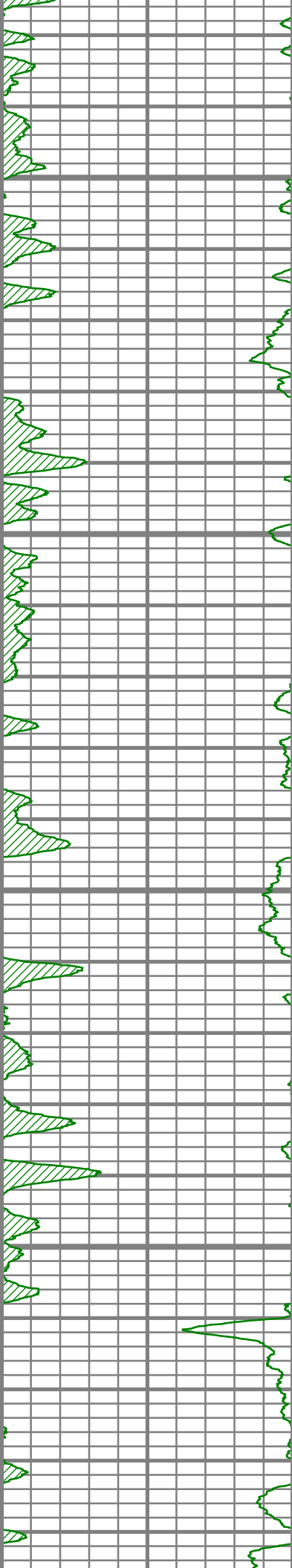
S: 62 MD: 5774.00 ft
Inc: 6.42 deg Az:
211.21 deg TVD:
5773.23 ft

S: 63 MD: 5806.00 ft
Inc: 7.92 deg Az:
206.95 deg TVD:
5804.98 ft

S: 64 MD: 5838.00 ft
Inc: 9.65 deg Az:
203.75 deg TVD:
5836.61 ft

S: 65 MD: 5870.00 ft
Inc: 12.31 deg Az:
207.23 deg TVD:
5868.02 ft

S: 66 MD: 5902.00 ft
Inc: 14.45 deg Az:
207.75 deg TVD:
5899.15 ft

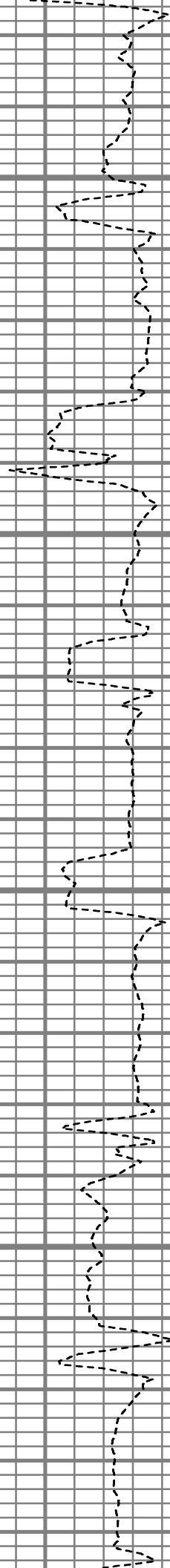


5950

6000

6050

6100



S: 67 MD: 5934.00 ft
Inc: 16.98 deg Az:
208.30 deg TVD:
5929.95 ft

S: 68 MD: 5966.00 ft
Inc: 19.18 deg Az:
207.49 deg TVD:
5960.37 ft

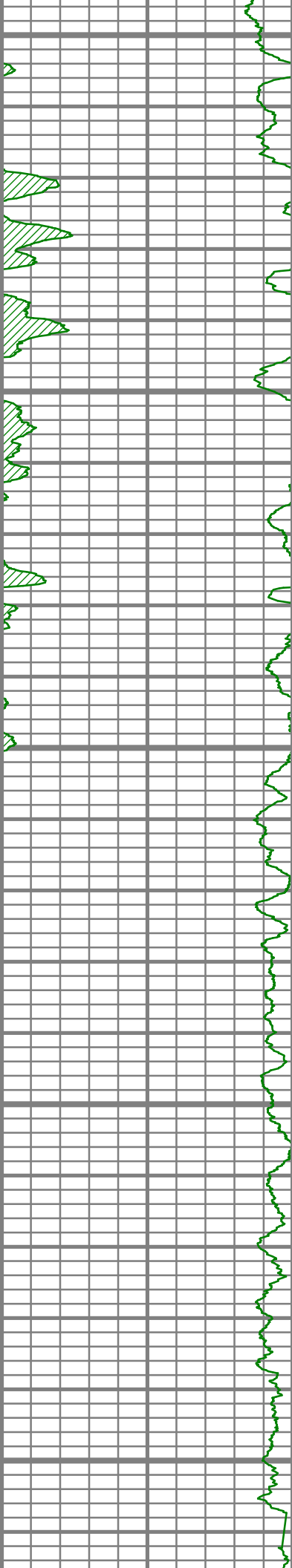
S: 69 MD: 5997.00 ft
Inc: 21.29 deg Az:
207.55 deg TVD:
5989.45 ft

S: 70 MD: 6029.00 ft
Inc: 23.28 deg Az:
205.91 deg TVD:
6019.06 ft

S: 71 MD: 6061.00 ft
Inc: 25.16 deg Az:
204.26 deg TVD:
6048.24 ft

S: 72 MD: 6093.00 ft
Inc: 28.02 deg Az:
203.34 deg TVD:
6076.86 ft

S: 73 MD: 6125.00 ft
Inc: 30.78 deg Az:
203.70 deg TVD:
6104.73 ft



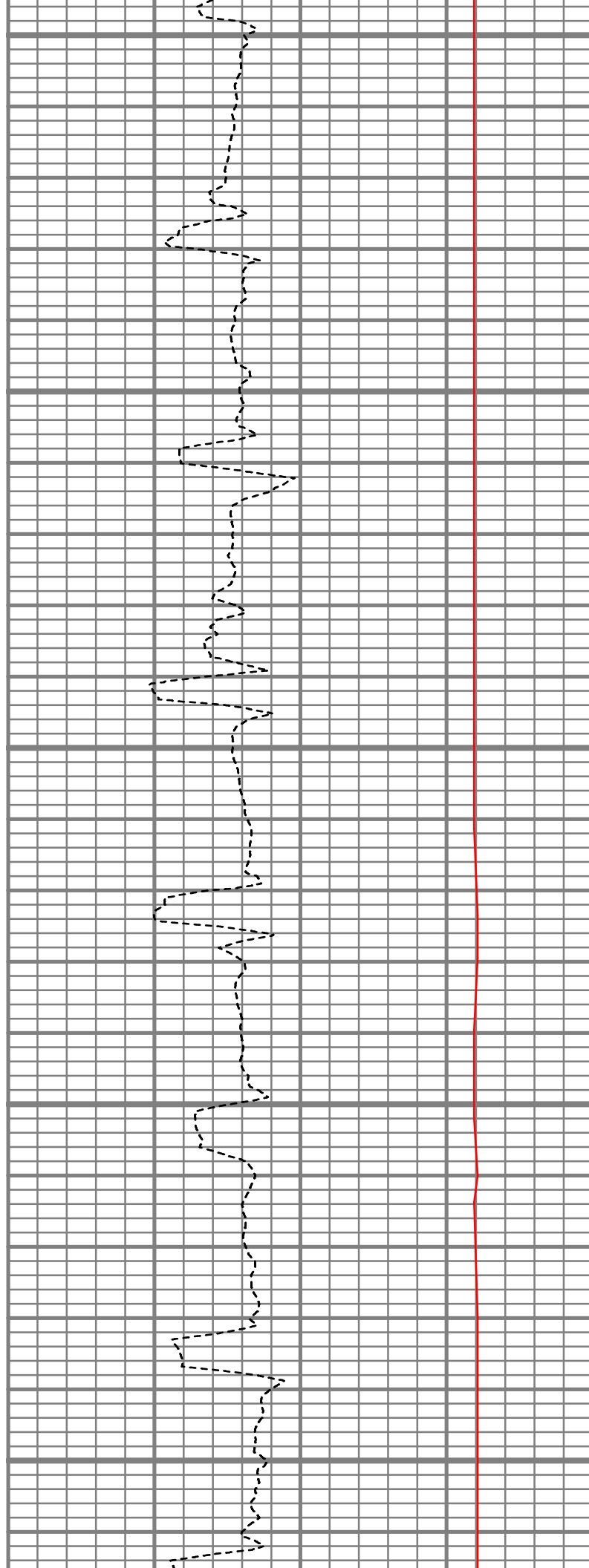
6150

6200

6250

6300

6350



S: 74 MD: 6157.00 ft
Inc: 33.55 deg Az:
204.19 deg TVD:
6131.82 ft

S: 75 MD: 6189.00 ft
Inc: 36.53 deg Az:
204.15 deg TVD:
6158.01 ft

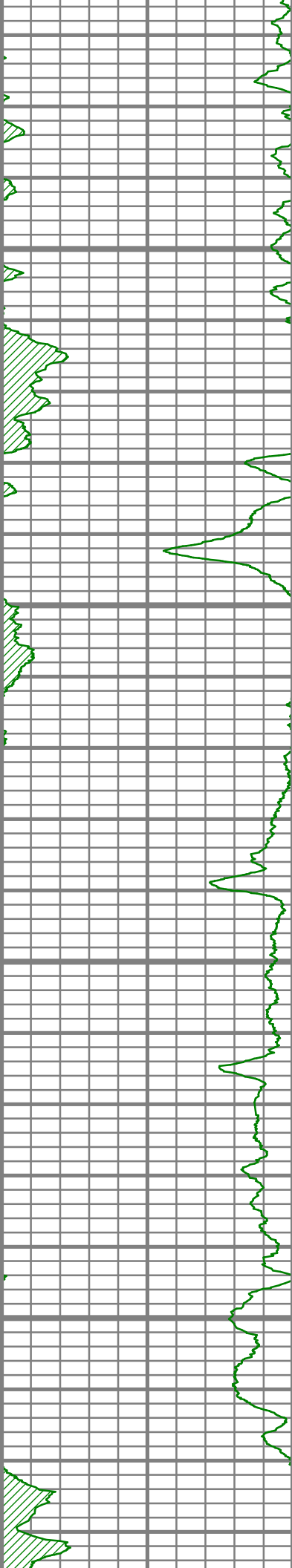
S: 76 MD: 6220.00 ft
Inc: 39.15 deg Az:
203.85 deg TVD:
6182.50 ft

S: 77 MD: 6252.00 ft
Inc: 41.79 deg Az:
202.34 deg TVD:
6206.84 ft

S: 78 MD: 6284.00 ft
Inc: 43.44 deg Az:
199.98 deg TVD:
6230.39 ft

S: 79 MD: 6316.00 ft
Inc: 45.54 deg Az:
198.59 deg TVD:
6253.22 ft

S: 80 MD: 6348.00 ft
Inc: 47.89 deg Az:
196.50 deg TVD:
6275.15 ft

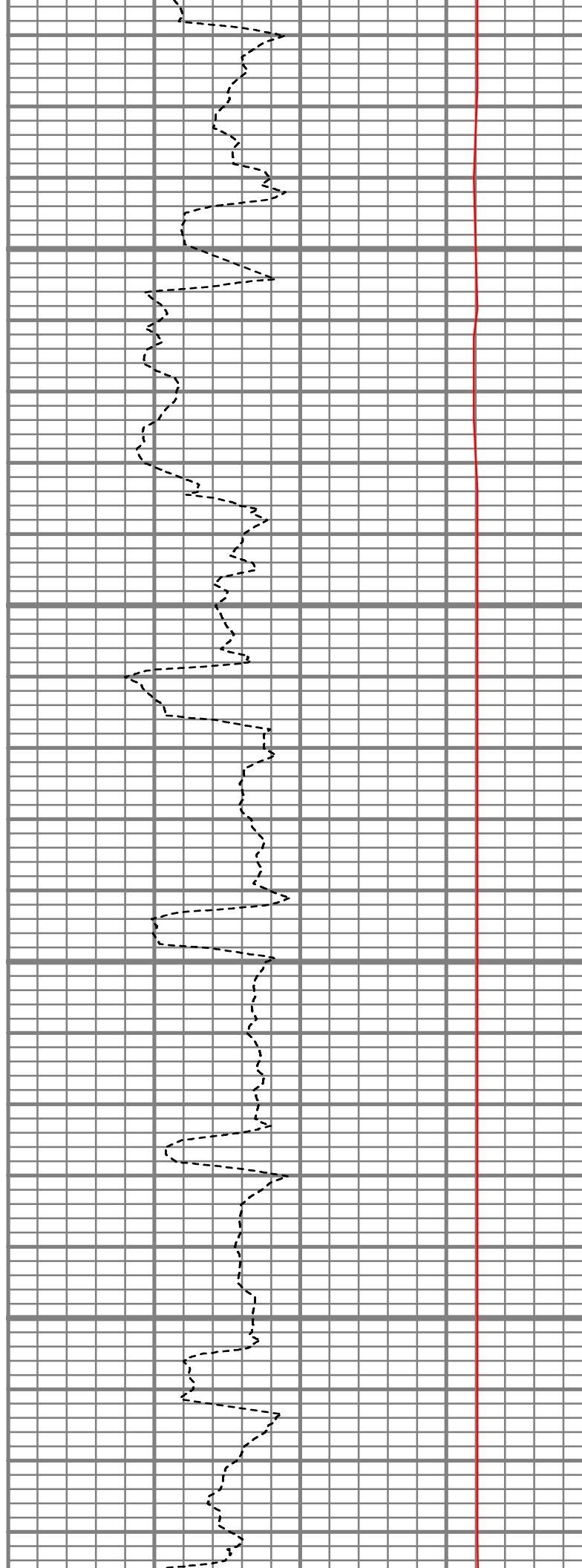


6400

6450

6500

6550



S: 81 MD: 6380.00 ft
Inc: 50.00 deg Az:
195.13 deg TVD:
6296.17 ft

S: 82 MD: 6412.00 ft
Inc: 50.80 deg Az:
194.35 deg TVD:
6316.57 ft

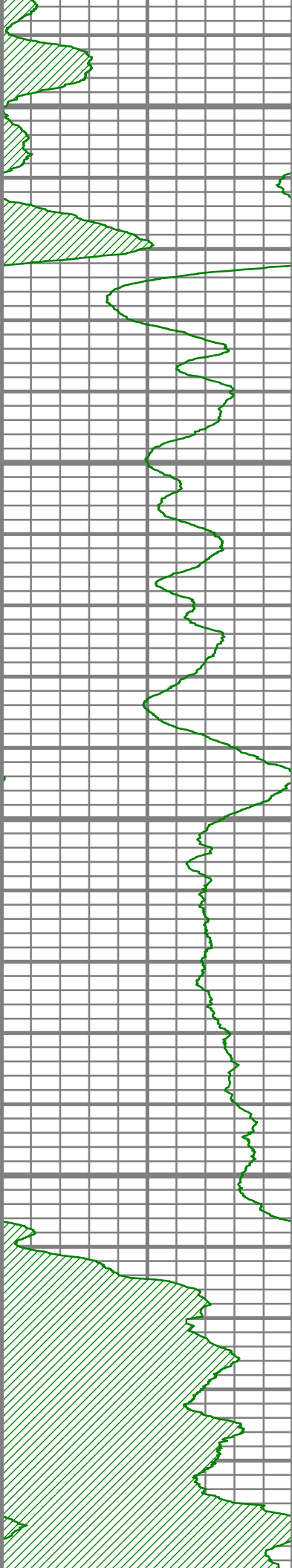
S: 83 MD: 6443.00 ft
Inc: 52.08 deg Az:
193.09 deg TVD:
6335.89 ft

S: 84 MD: 6475.00 ft
Inc: 54.38 deg Az:
192.98 deg TVD:
6355.05 ft

S: 85 MD: 6507.00 ft
Inc: 57.39 deg Az:
192.37 deg TVD:
6372.99 ft

S: 86 MD: 6539.00 ft
Inc: 60.28 deg Az:
191.60 deg TVD:
6389.55 ft

S: 87 MD: 6571.00 ft
Inc: 62.34 deg Az:
190.16 deg TVD:
6404.92 ft



6600

S: 88 MD: 6603.00 ft
Inc: 64.03 deg Az:
187.80 deg TVD:
6419.35 ft

6650

S: 89 MD: 6634.00 ft
Inc: 65.87 deg Az:
186.66 deg TVD:
6432.48 ft

6700

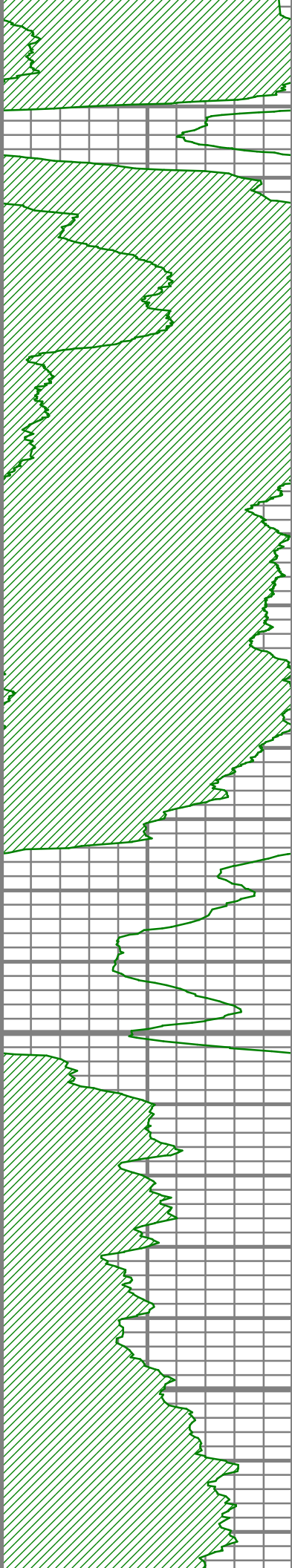
S: 90 MD: 6666.00 ft
Inc: 68.28 deg Az:
185.00 deg TVD:
6444.94 ft

6750

S: 92 MD: 6729.00 ft
Inc: 73.02 deg Az:
183.37 deg TVD:
6465.87 ft

6800

S: 94 MD: 6793.00 ft
Inc: 77.30 deg Az:
181.13 deg TVD:
6482.31 ft

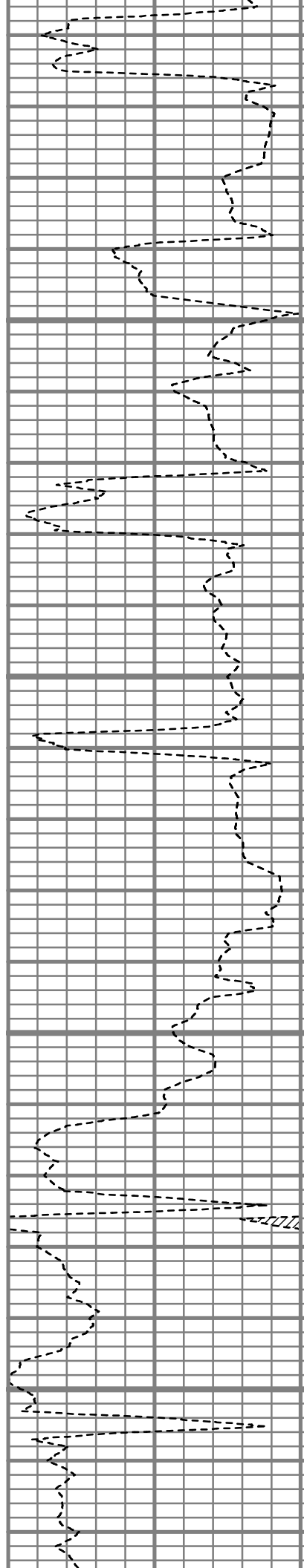


6850

6900

6950

7000



S: 95 MD: 6825.00 ft
Inc: 78.75 deg Az:
180.15 deg TVD:
6488.95 ft

S: 96 MD: 6857.00 ft
Inc: 80.45 deg Az:
179.39 deg TVD:
6494.73 ft

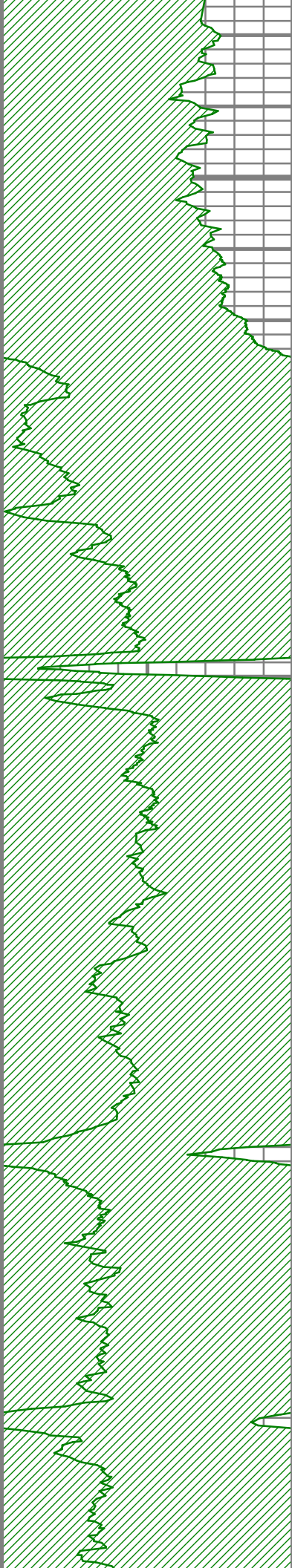
S: 97 MD: 6889.00 ft
Inc: 82.42 deg Az:
178.25 deg TVD:
6499.49 ft

S: 98 MD: 6920.00 ft
Inc: 84.83 deg Az:
176.07 deg TVD:
6502.94 ft

S: 99 MD: 6952.00 ft
Inc: 86.10 deg Az:
175.19 deg TVD:
6505.47 ft

S: 100 MD: 6984.00 ft
Inc: 86.37 deg Az:
174.97 deg TVD:
6507.57 ft

S: 101 MD: 7016.00 ft
Inc: 86.71 deg Az:
175.36 deg TVD:
6509.50 ft

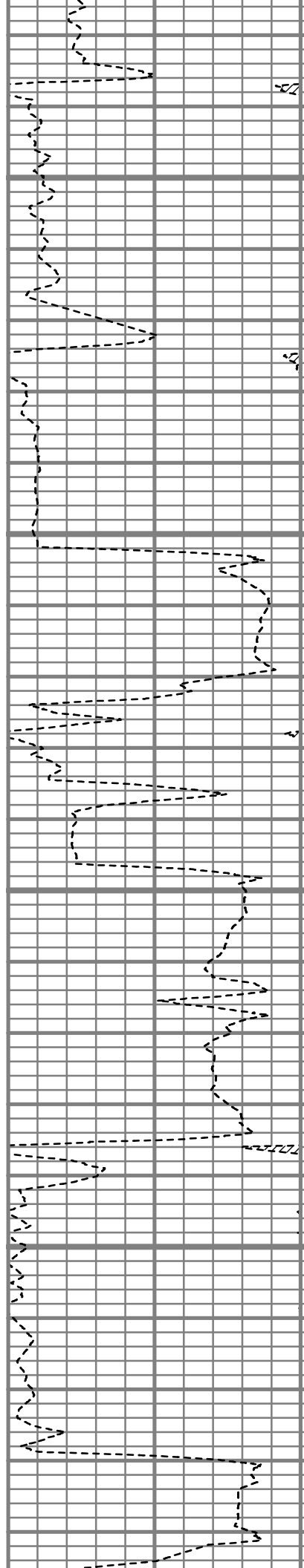


7050

7100

7150

7200



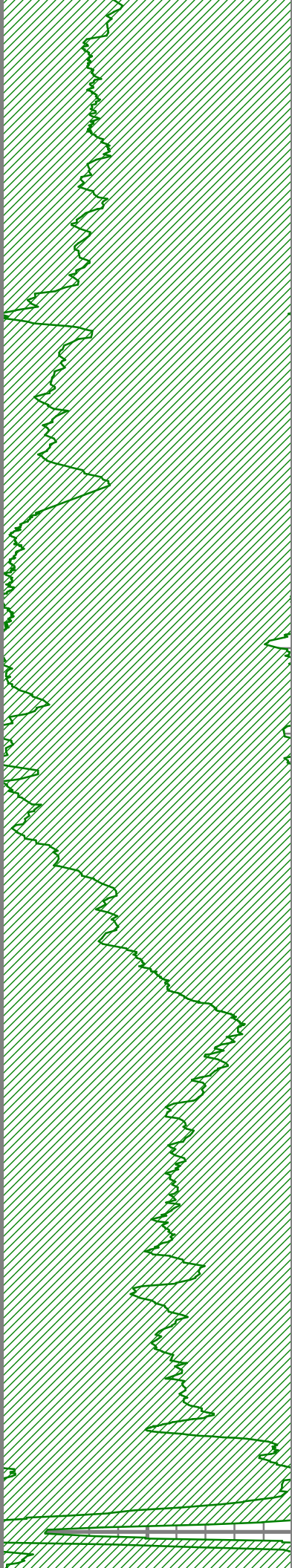
S: 102 MD: 7048.00 ft
Inc: 86.77 deg Az:
175.68 deg TVD:
6511.32 ft

S: 103 MD: 7079.00 ft
Inc: 87.11 deg Az:
175.25 deg TVD:
6512.97 ft

S: 104 MD: 7111.00 ft
Inc: 87.72 deg Az:
173.90 deg TVD:
6514.42 ft

S: 105 MD: 7175.00 ft
Inc: 89.23 deg Az:
170.93 deg TVD:
6516.12 ft

S: 106 MD: 7239.00 ft
Inc: 89.03 deg Az:
169.51 deg TVD:



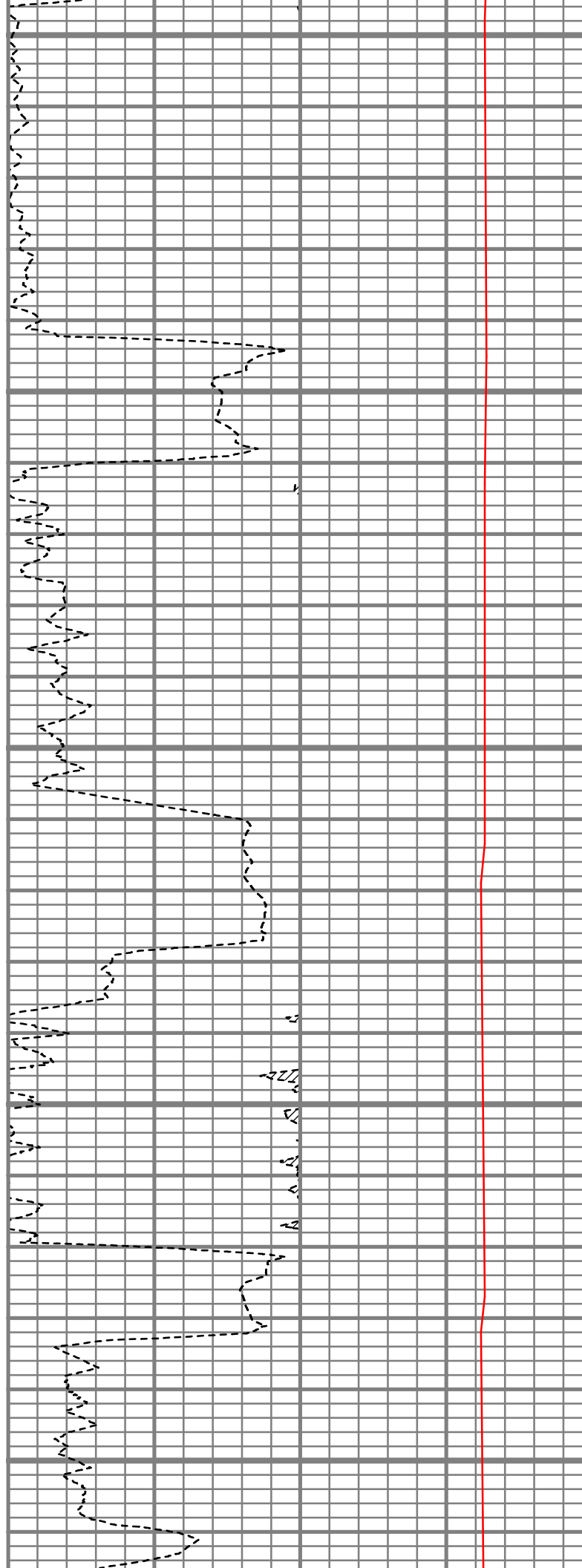
7250

7300

7350

7400

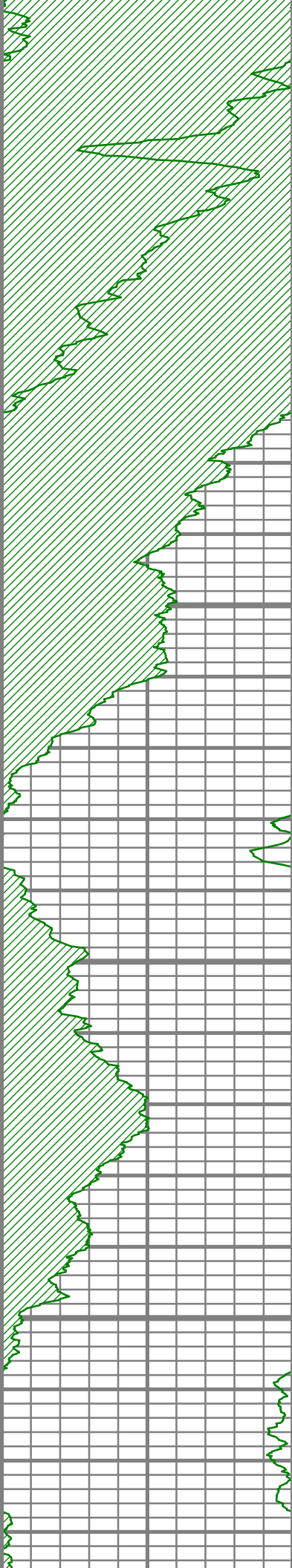
7450



S: 107 MD: 7303.00 ft
Inc: 88.39 deg Az:
169.22 deg TVD:
6518.54 ft

S: 108 MD: 7366.00 ft
Inc: 87.17 deg Az:
167.70 deg TVD:
6520.98 ft

S: 109 MD: 7430.00 ft
Inc: 86.91 deg Az:
166.37 deg TVD:
6524.28 ft

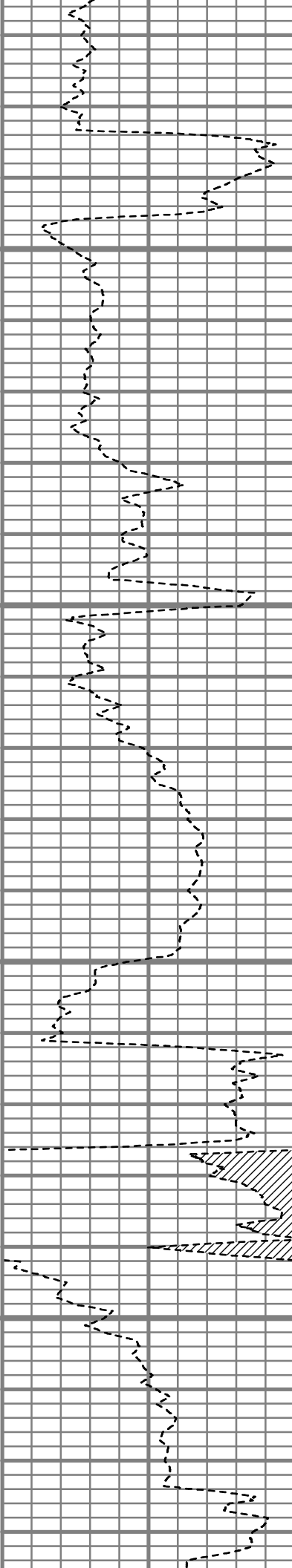


7500

7550

7600

7650

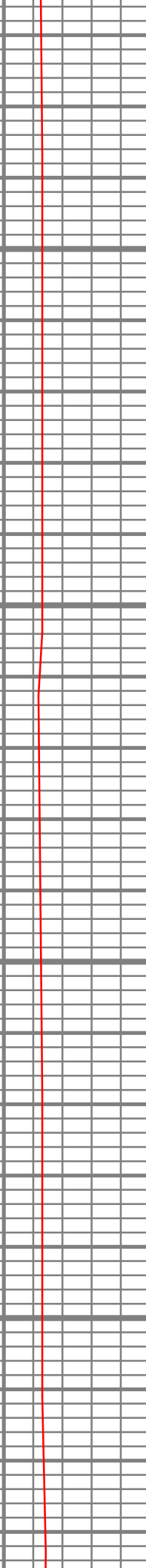


S: 110 MD: 7493.00 ft
Inc: 86.74 deg Az:
165.55 deg TVD:
6527.77 ft

S: 111 MD: 7557.00 ft
Inc: 86.67 deg Az:
166.70 deg TVD:
6531.45 ft

S: 112 MD: 7621.00 ft
Inc: 87.92 deg Az:
165.37 deg TVD:
6534.47 ft

S: 113 MD: 7684.00 ft



S: 113 MD: 7664.00 ft
Inc: 89.83 deg Az:
167.47 deg TVD:
6535.71 ft

7700

S: 114 MD: 7748.00 ft
Inc: 91.41 deg Az:
169.16 deg TVD:
6535.01 ft

7750

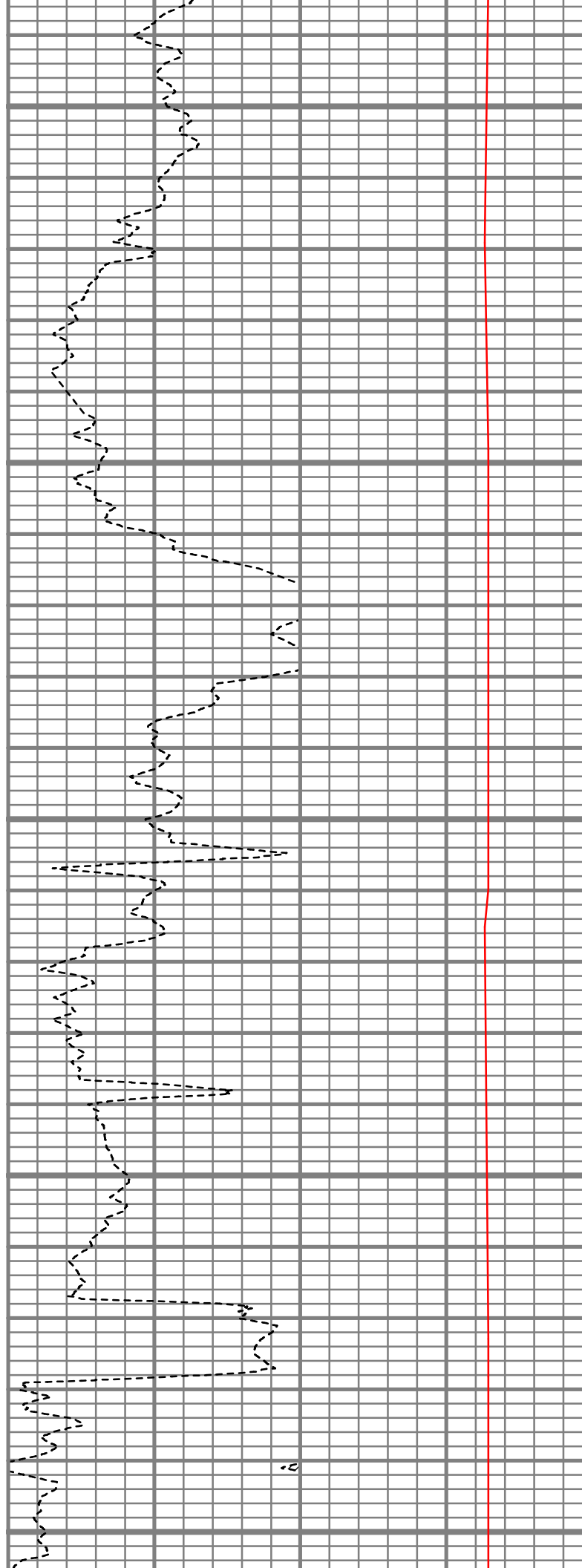
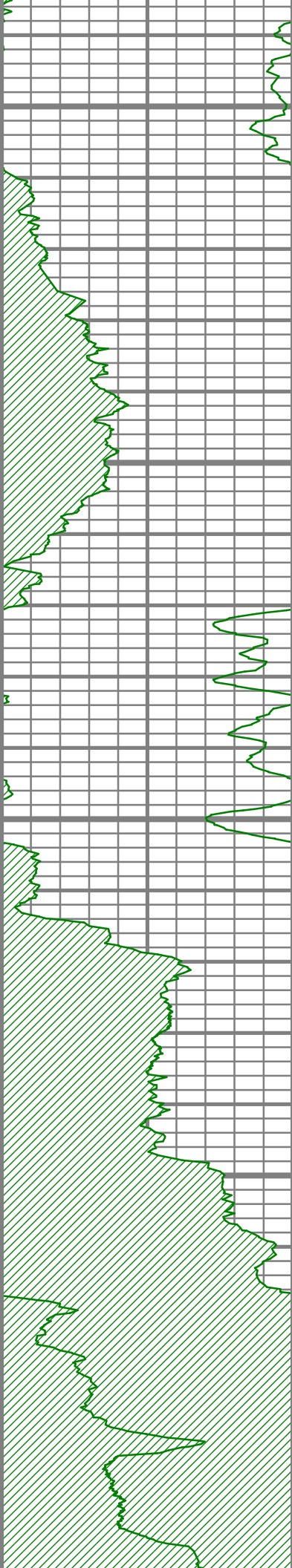
S: 115 MD: 7811.00 ft
Inc: 91.68 deg Az:
167.58 deg TVD:
6533.31 ft

7800

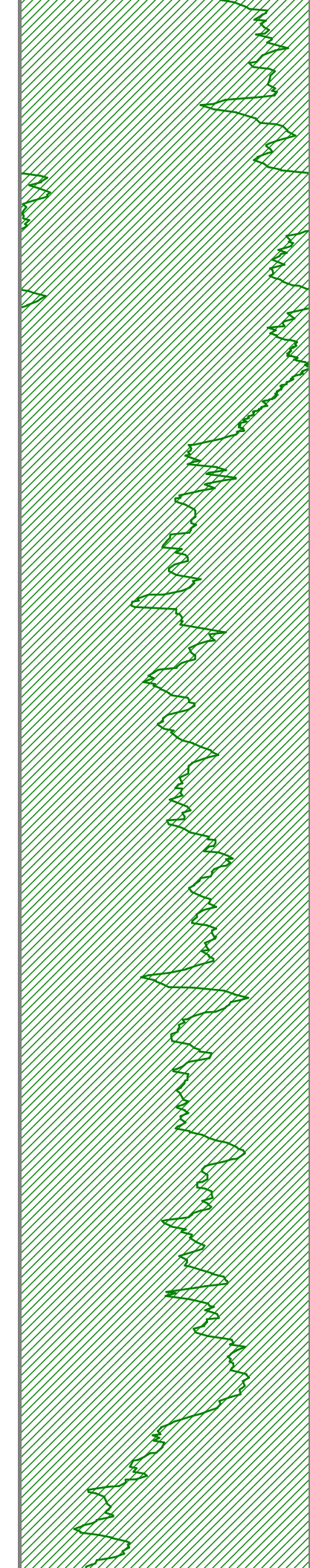
S: 116 MD: 7874.00 ft
Inc: 91.61 deg Az:
167.75 deg TVD:
6531.51 ft

7850

7900



id

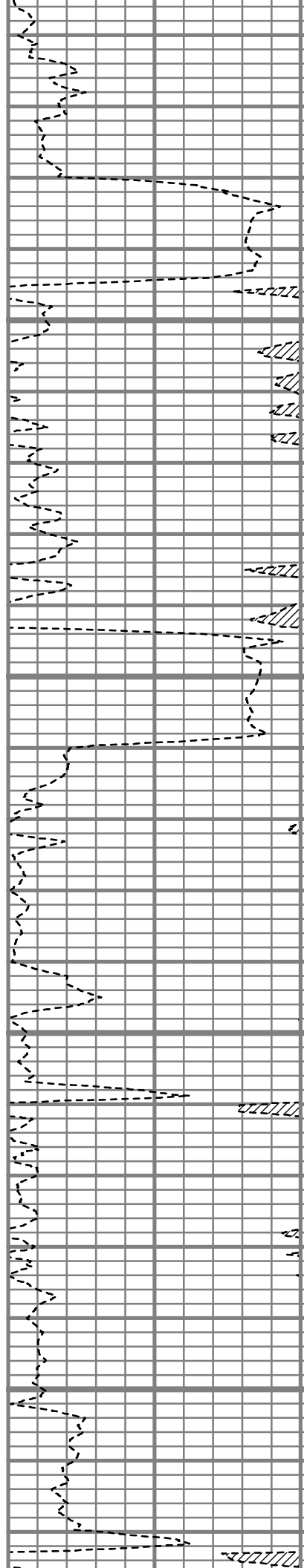


7950

8000

8050

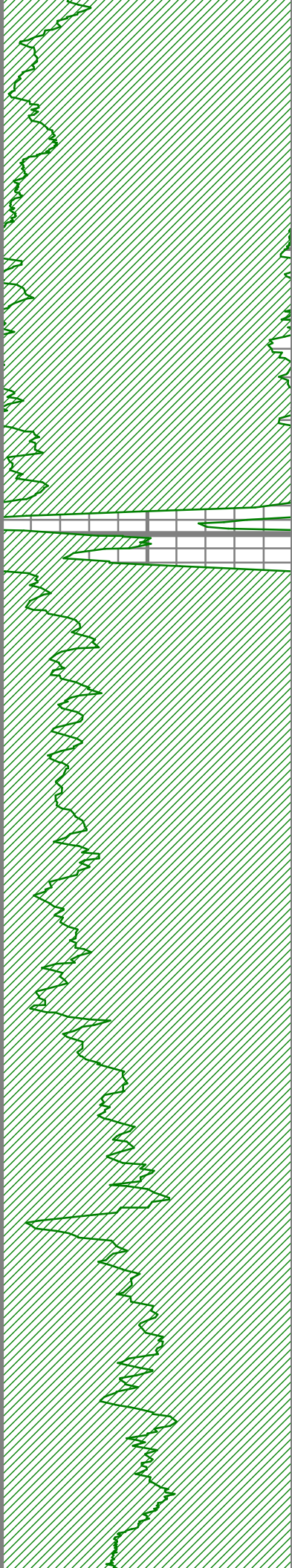
8100



S: 117 MD: 7938.00 ft
Inc: 91.44 deg Az:
166.58 deg TVD:
6529.80 ft

S: 118 MD: 8002.00 ft
Inc: 90.00 deg Az:
166.54 deg TVD:
6528.99 ft

S: 119 MD: 8066.00 ft
Inc: 90.44 deg Az:
166.29 deg TVD:
6528.75 ft

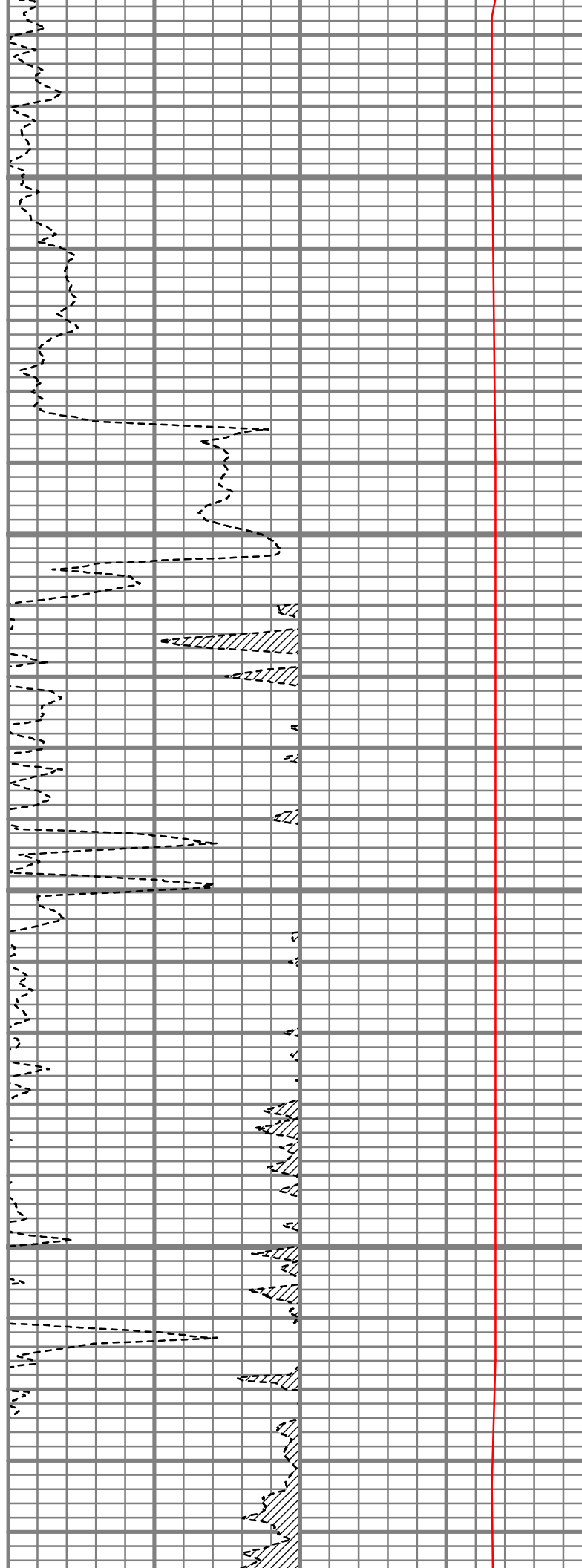


8150

8200

8250

8300



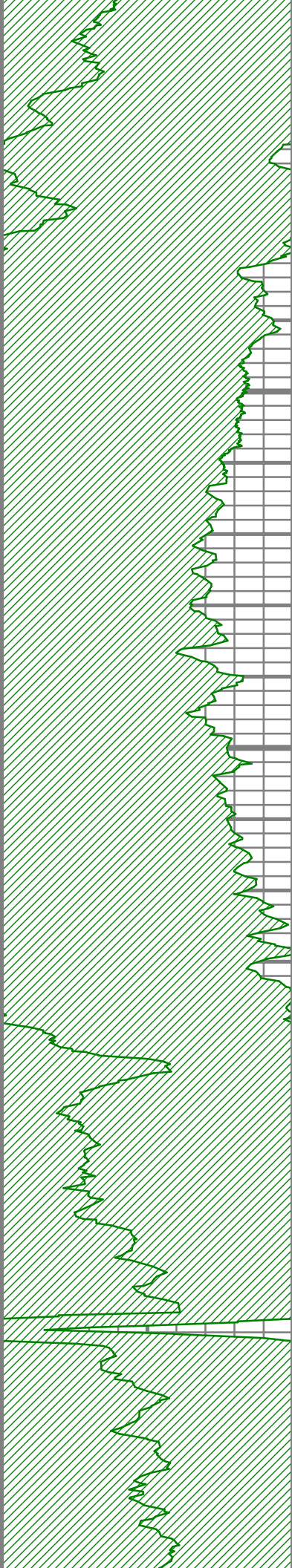
S: 120 MD: 8129.00 ft
Inc: 90.94 deg Az:
166.47 deg TVD:
6527.99 ft

S: 121 MD: 8193.00 ft
Inc: 90.37 deg Az:
166.01 deg TVD:
6527.26 ft

S: 122 MD: 8257.00 ft
Inc: 89.93 deg Az:
166.45 deg TVD:
6527.09 ft

S: 123 MD: 8320.00 ft
Inc: 90.87 deg Az:
166.58 deg TVD:
6526.65 ft





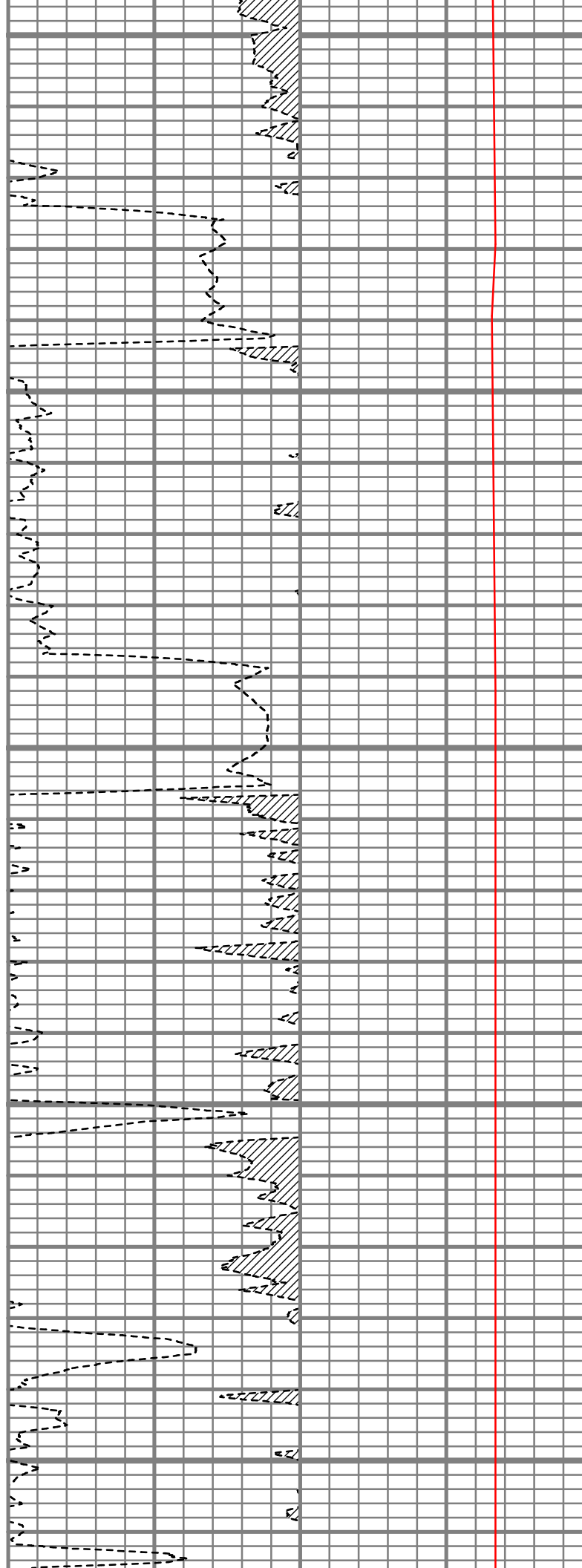
8350

8400

8450

8500

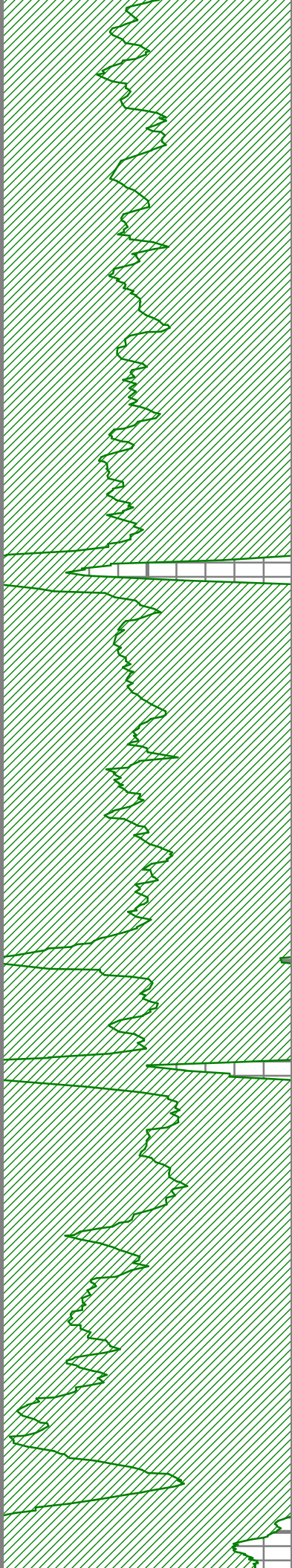
8550



S: 124 MD: 8384.00 ft
Inc: 90.47 deg Az:
165.58 deg TVD:
6525.90 ft

S: 125 MD: 8448.00 ft
Inc: 88.59 deg Az:
164.66 deg TVD:
6526.43 ft

S: 126 MD: 8512.00 ft
Inc: 88.25 deg Az:
164.30 deg TVD:
6528.19 ft

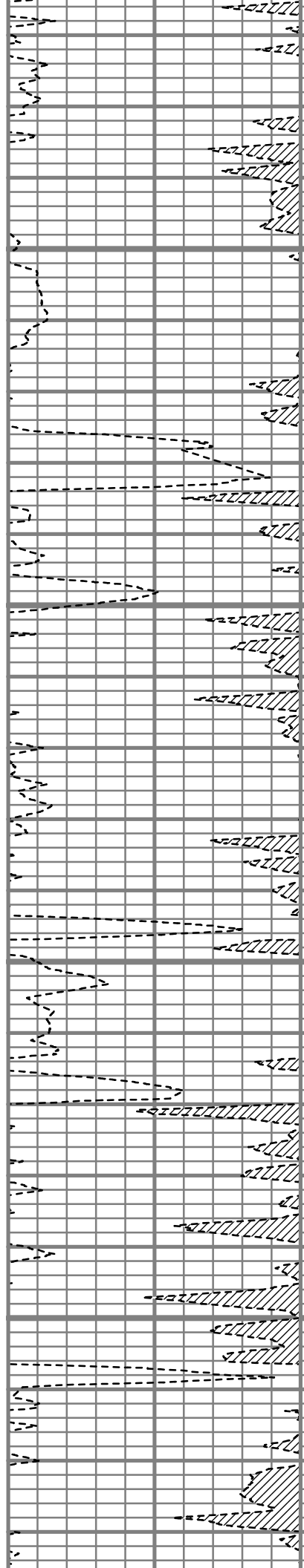


8600

8650

8700

8750



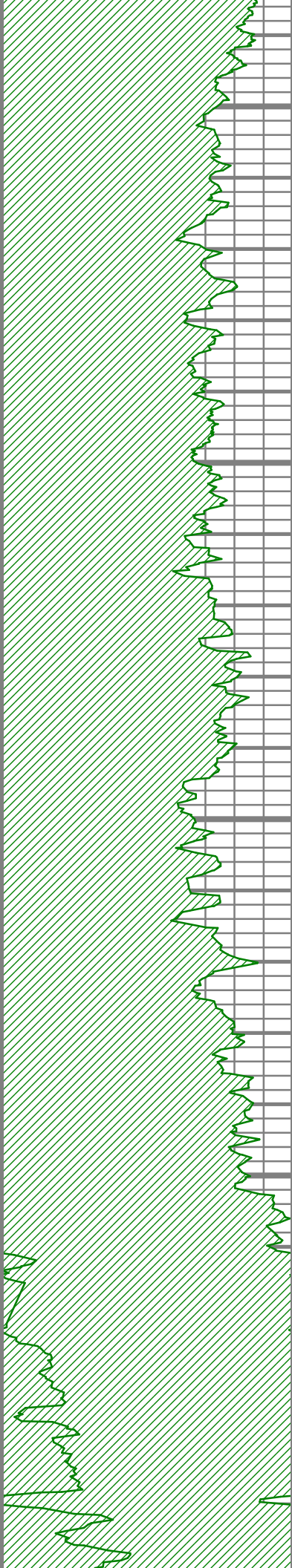
S: 127 MD: 8576.00 ft
Inc: 88.79 deg Az:
164.65 deg TVD:
6529.84 ft

S: 128 MD: 8639.00 ft
Inc: 89.73 deg Az:
164.62 deg TVD:
6530.65 ft

S: 129 MD: 8703.00 ft
Inc: 90.17 deg Az:
165.05 deg TVD:
6530.71 ft

S: 130 MD: 8766.00 ft
Inc: 90.97 deg Az:
164.65 deg TVD:
6530.08 ft





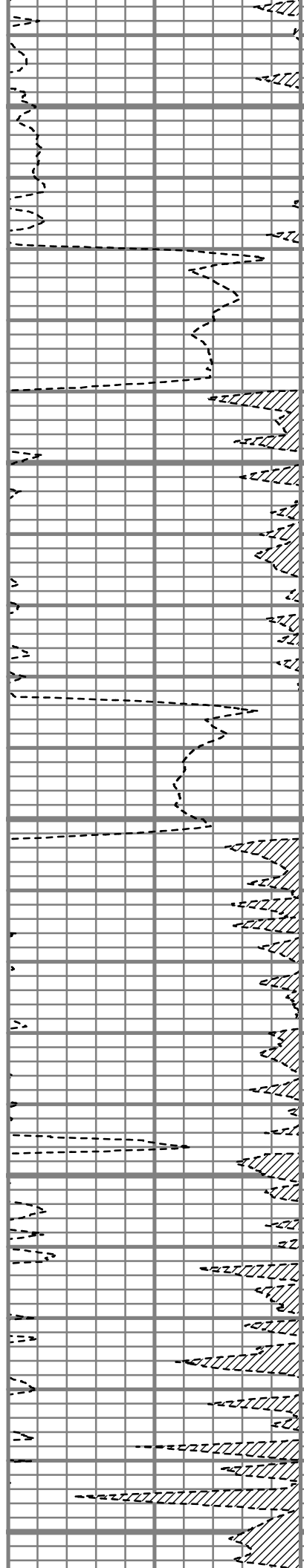
8800

8850

8900

8950

9000

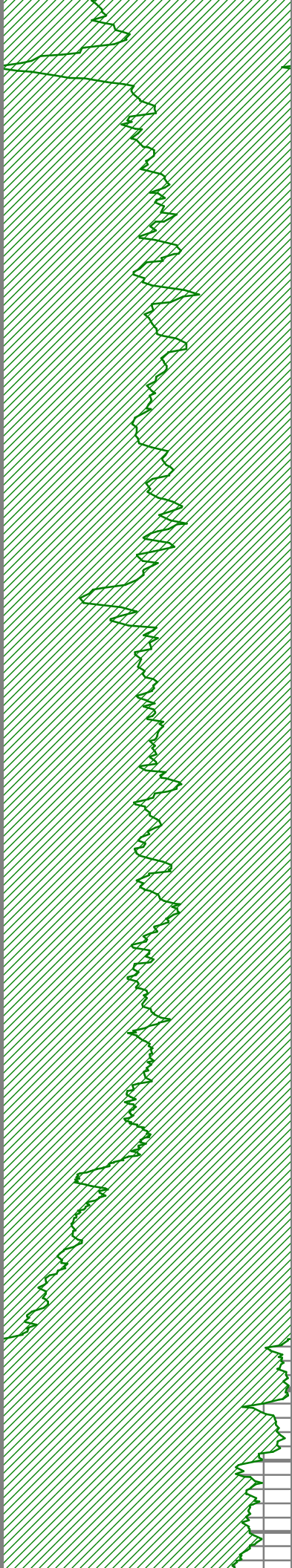


S: 131 MD: 8829.00 ft
Inc: 90.03 deg Az:
164.44 deg TVD:
6529.53 ft

S: 132 MD: 8893.00 ft
Inc: 88.55 deg Az:
164.59 deg TVD:
6530.32 ft

S: 133 MD: 8956.00 ft
Inc: 88.25 deg Az:
164.16 deg TVD:
6532.07 ft



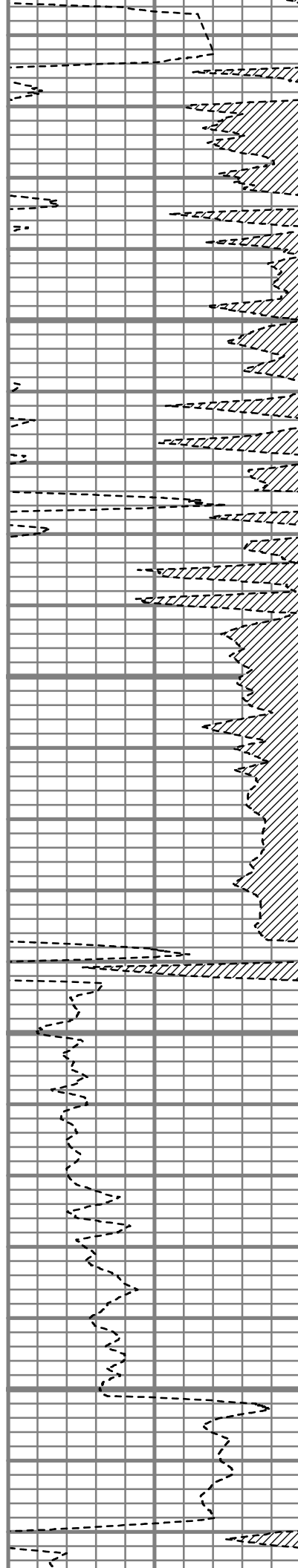


9050

9100

9150

9200

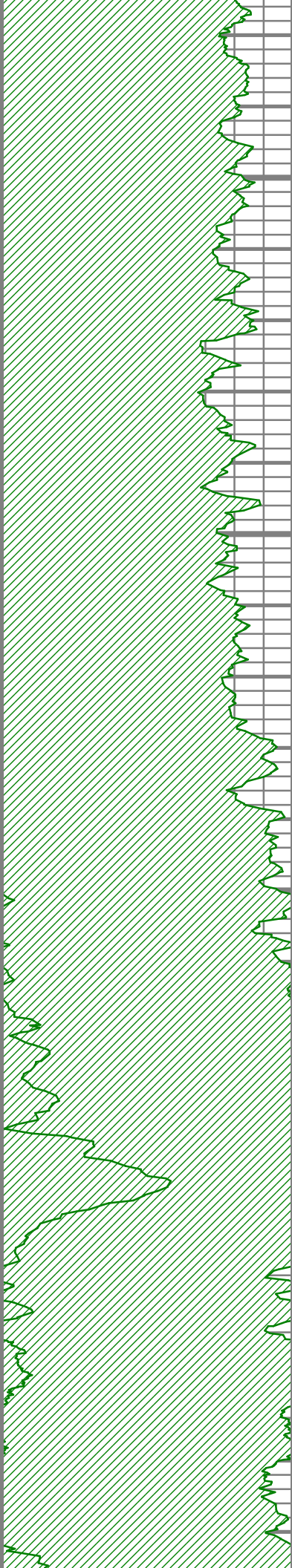


S: 134 MD: 9020.00 ft
Inc: 88.69 deg Az:
164.28 deg TVD:
6533.78 ft

S: 135 MD: 9084.00 ft
Inc: 89.50 deg Az:
164.30 deg TVD:
6534.79 ft

S: 136 MD: 9147.00 ft
Inc: 90.50 deg Az:
165.17 deg TVD:
6534.79 ft

S: 137 MD: 9210.00 ft
Inc: 90.10 deg Az:
164.60 deg TVD:
6534.46 ft

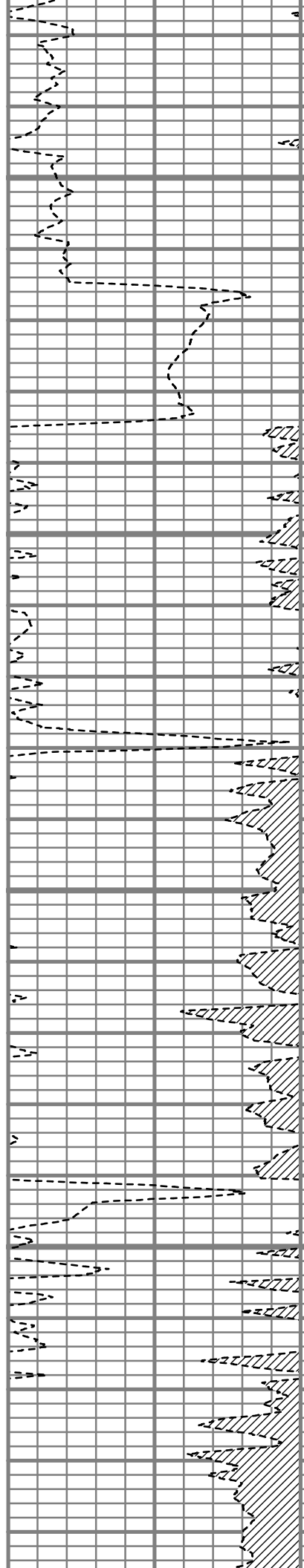


9250

9300

9350

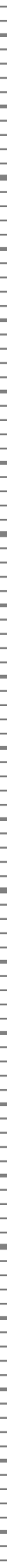
9400

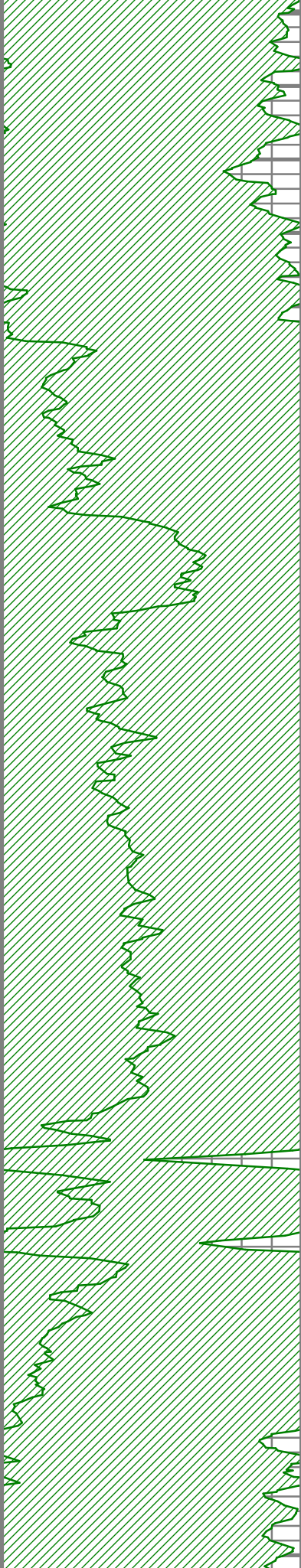


S: 138 MD: 9274.00 ft
Inc: 88.99 deg Az:
164.30 deg TVD:
6534.96 ft

S: 139 MD: 9338.00 ft
Inc: 88.76 deg Az:
164.65 deg TVD:
6536.22 ft

S: 140 MD: 9401.00 ft
Inc: 89.43 deg Az:
164.78 deg TVD:
6537.22 ft





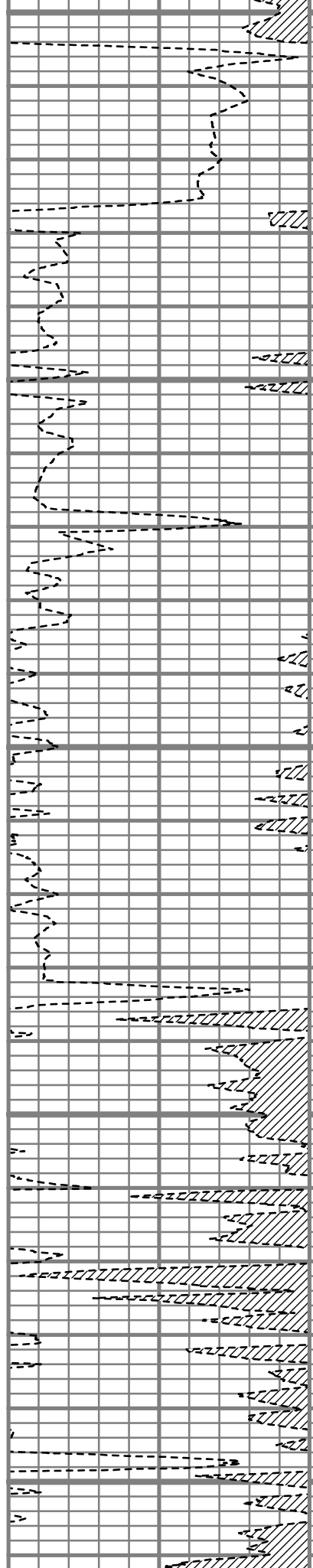
9450

9500

9550

9600

9650

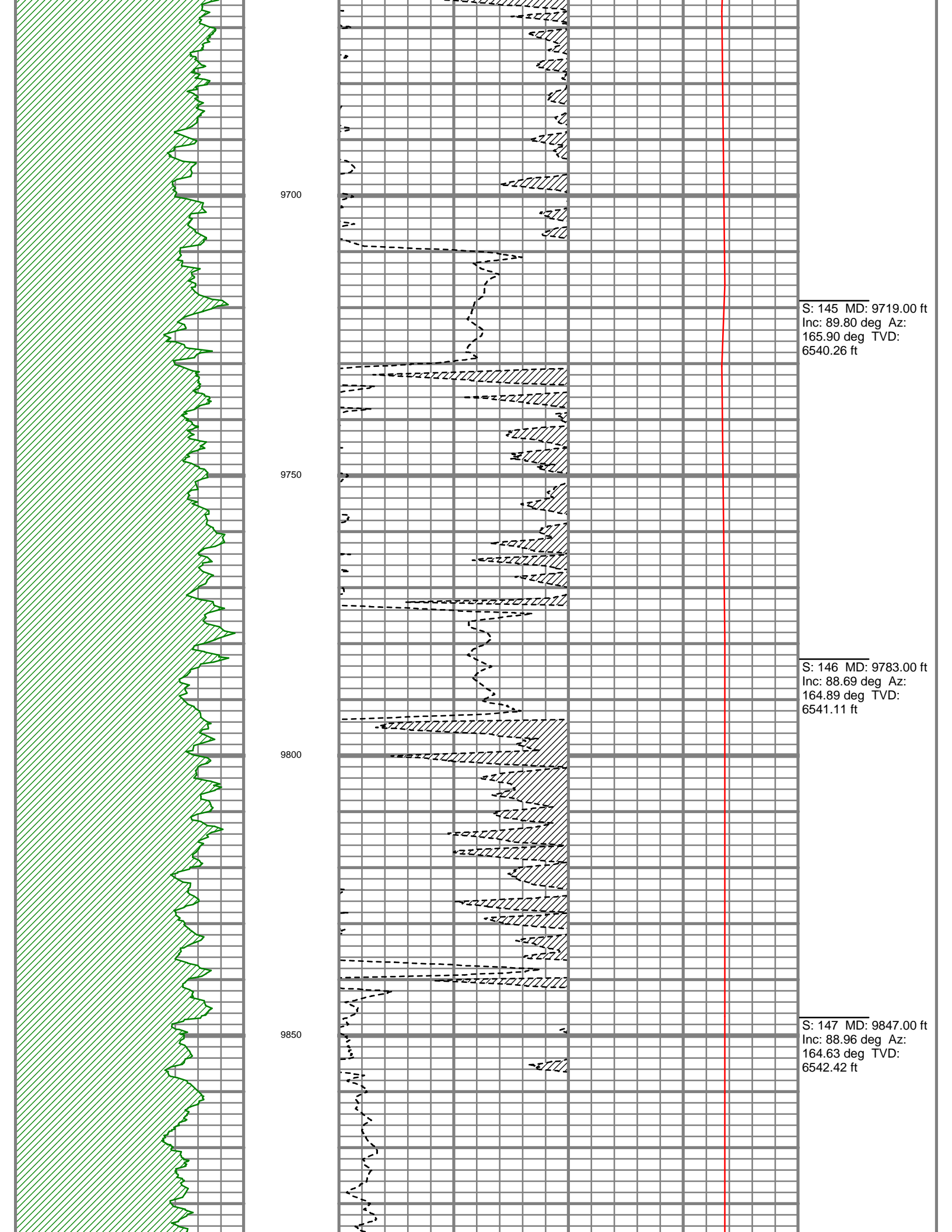


S: 141 MD: 9465.00 ft
Inc: 89.13 deg Az:
165.25 deg TVD:
6538.02 ft

S: 142 MD: 9529.00 ft
Inc: 88.59 deg Az:
166.01 deg TVD:
6539.30 ft

S: 143 MD: 9592.00 ft
Inc: 89.40 deg Az:
166.55 deg TVD:
6540.41 ft

S: 144 MD: 9656.00 ft
Inc: 90.54 deg Az:
166.51 deg TVD:
6540.45 ft



9700

S: 145 MD: 9719.00 ft
Inc: 89.80 deg Az:
165.90 deg TVD:
6540.26 ft

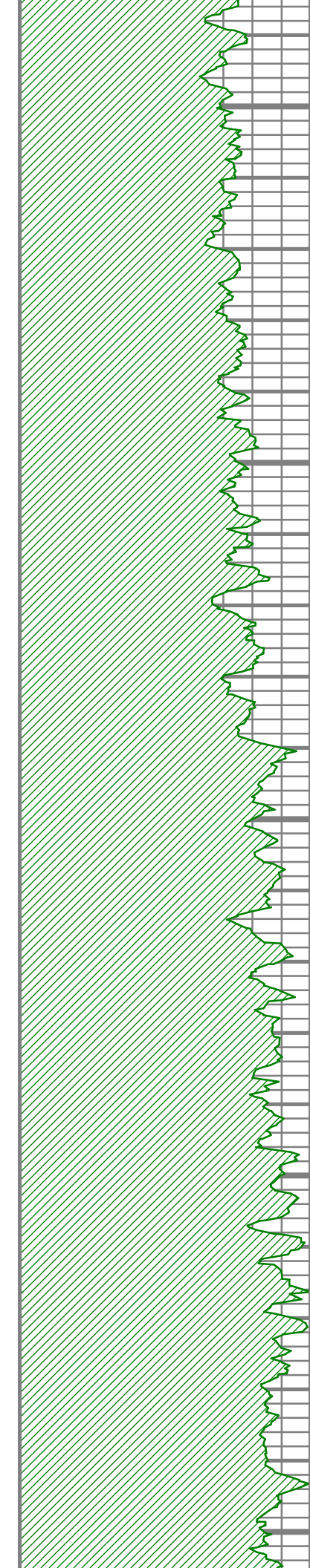
9750

S: 146 MD: 9783.00 ft
Inc: 88.69 deg Az:
164.89 deg TVD:
6541.11 ft

9800

9850

S: 147 MD: 9847.00 ft
Inc: 88.96 deg Az:
164.63 deg TVD:
6542.42 ft



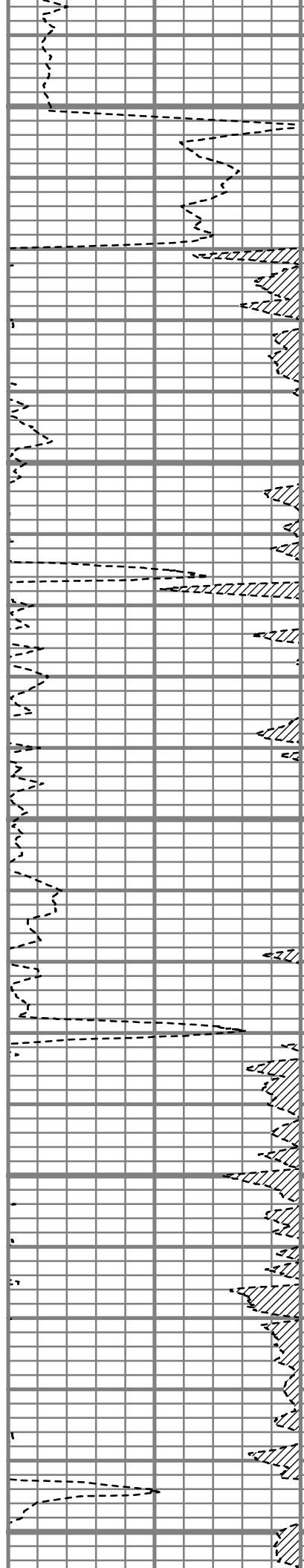
9900

9950

10000

10050

10100



S: 148 MD: 9911.00 ft
Inc: 88.66 deg Az:
165.28 deg TVD:
6543.75 ft

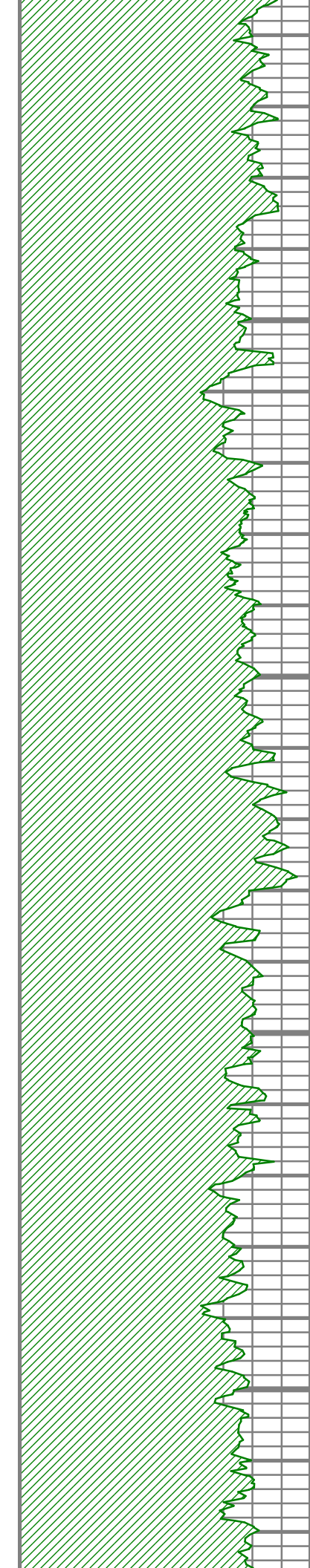
S: 149 MD: 9974.00 ft
Inc: 88.59 deg Az:
164.85 deg TVD:
6545.26 ft

S: 150 MD: 10038.00 ft
Inc: 88.96 deg Az:
165.29 deg TVD:
6546.63 ft

S: 151 MD: 10102.00 ft



Inc: 89.60 deg Az:
164.41 deg TVD:
6547.44 ft



10150

S: 152 MD: 10165.00 ft
Inc: 89.90 deg Az:
164.16 deg TVD:
6547.72 ft

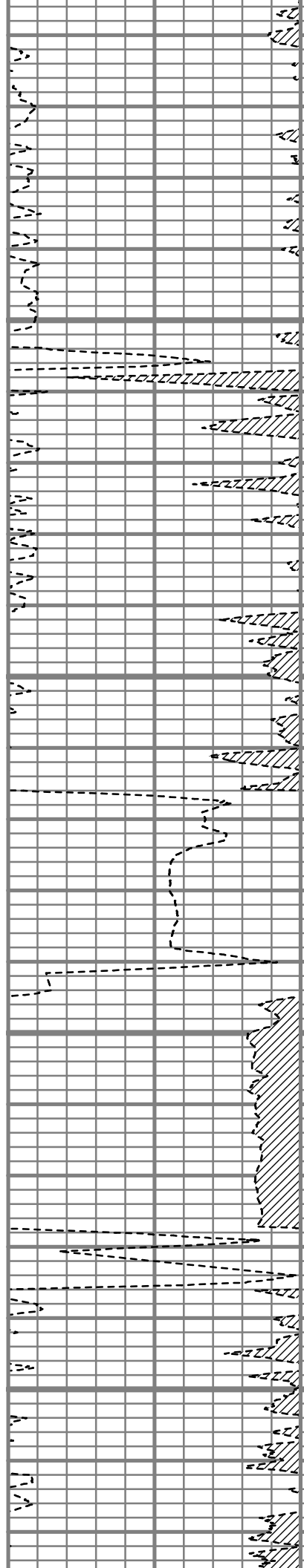
10200

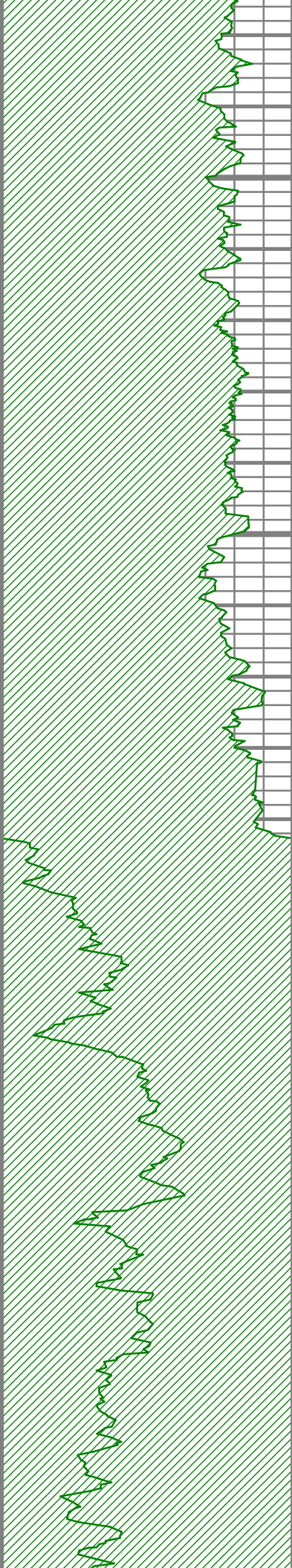
S: 153 MD: 10228.00 ft
Inc: 89.33 deg Az:
164.05 deg TVD:
6548.14 ft

10250

S: 154 MD: 10292.00 ft
Inc: 88.56 deg Az:
164.90 deg TVD:
6549.32 ft

10300



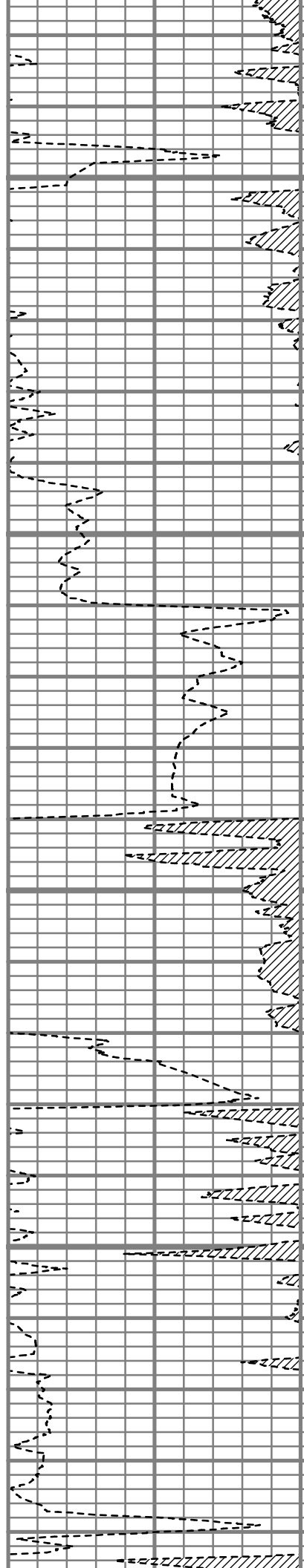


10350

10400

10450

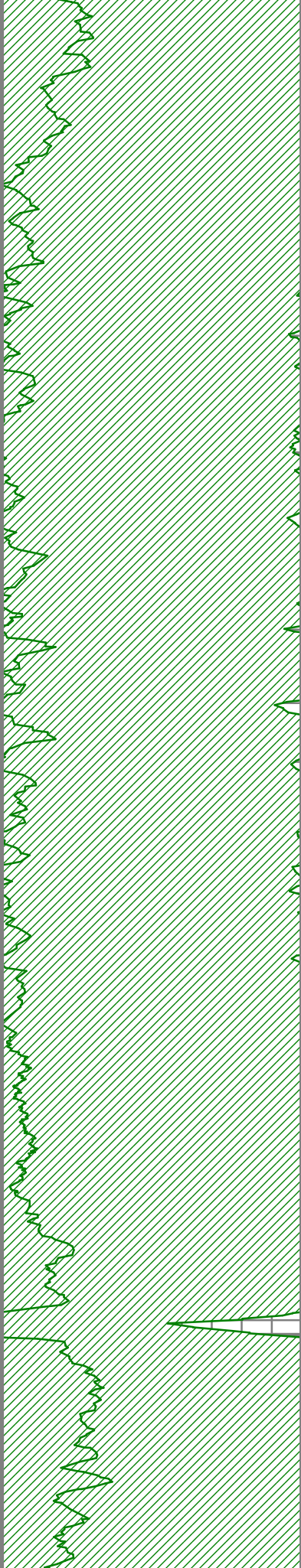
10500



S: 155 MD: 10356.00 ft
Inc: 89.33 deg Az:
164.28 deg TVD:
6550.50 ft

S: 156 MD: 10420.00 ft
Inc: 88.02 deg Az:
165.19 deg TVD:
6551.99 ft

S: 157 MD: 10483.00 ft
Inc: 87.38 deg Az:
166.07 deg TVD:
6554.51 ft



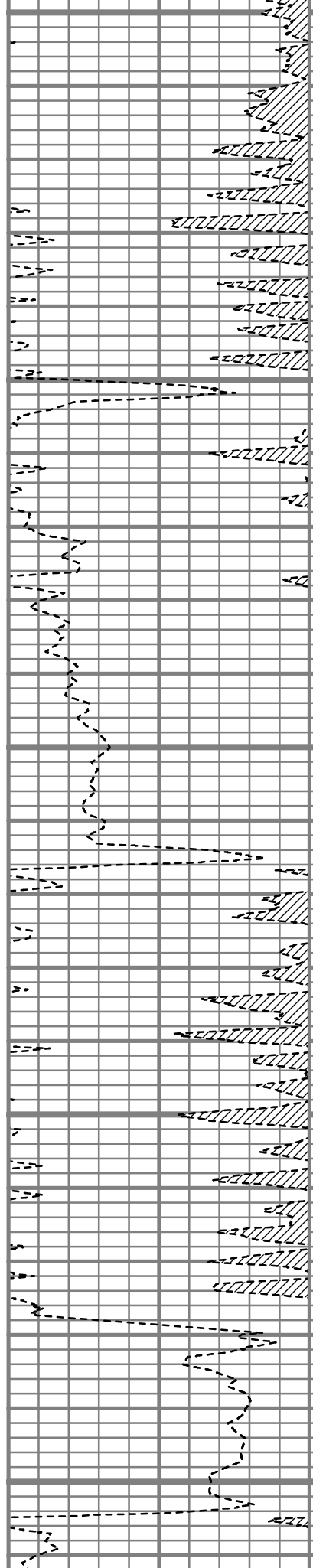
10550

10600

10650

10700

10750

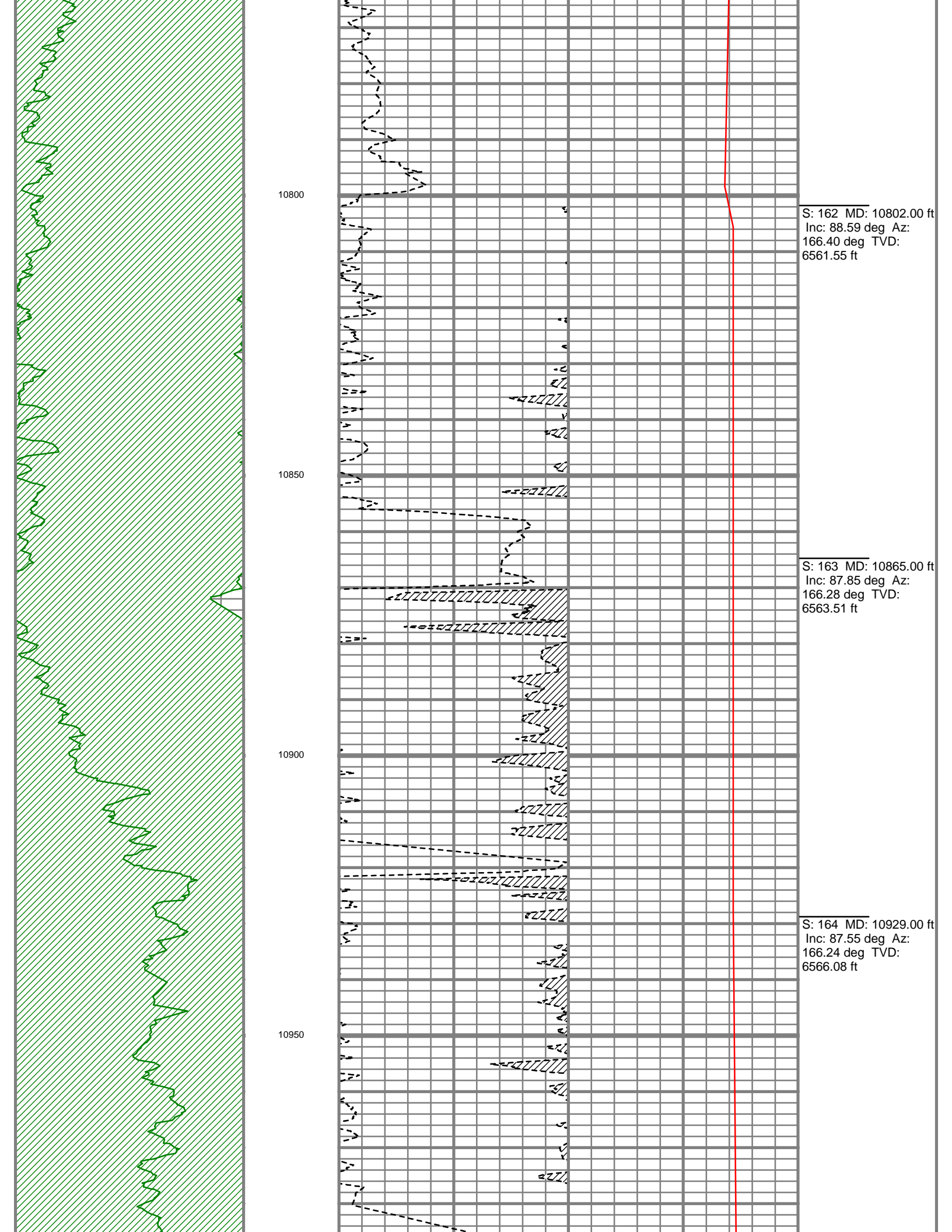


S: 158 MD: 10547.00 ft
Inc: 88.05 deg Az:
166.62 deg TVD:
6557.06 ft

S: 159 MD: 10611.00 ft
Inc: 88.96 deg Az:
166.87 deg TVD:
6558.73 ft

S: 160 MD: 10674.00 ft
Inc: 89.60 deg Az:
168.08 deg TVD:
6559.53 ft

S: 161 MD: 10738.00 ft
Inc: 89.09 deg Az:
167.18 deg TVD:
6560.26 ft



10800

S: 162 MD: 10802.00 ft
Inc: 88.59 deg Az:
166.40 deg TVD:
6561.55 ft

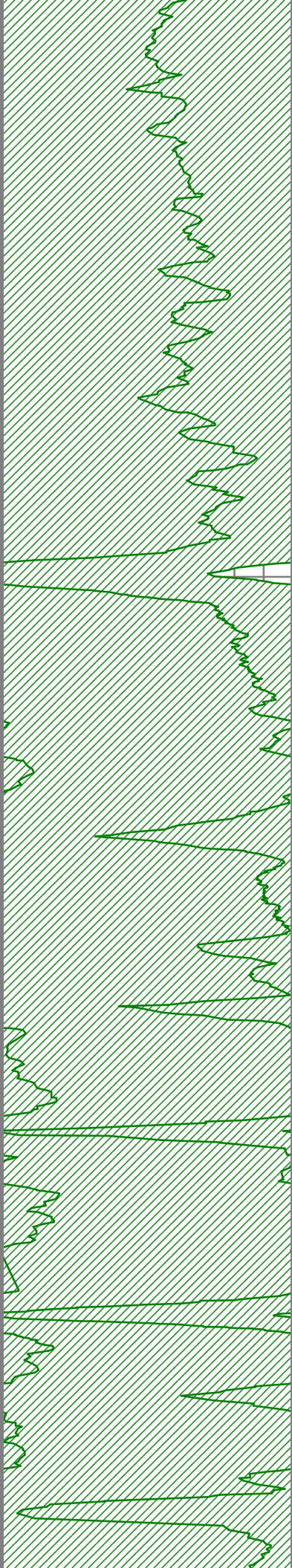
10850

S: 163 MD: 10865.00 ft
Inc: 87.85 deg Az:
166.28 deg TVD:
6563.51 ft

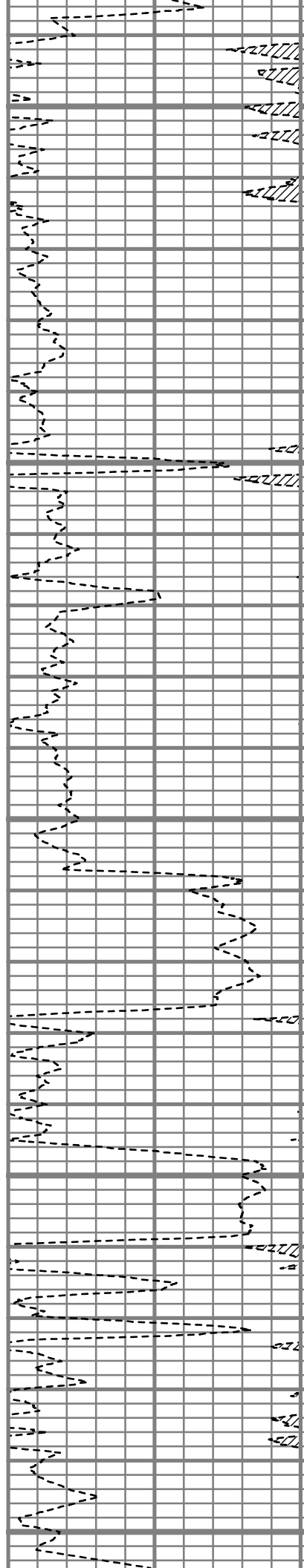
10900

S: 164 MD: 10929.00 ft
Inc: 87.55 deg Az:
166.24 deg TVD:
6566.08 ft

10950



11000
11050
11100
11150
11200

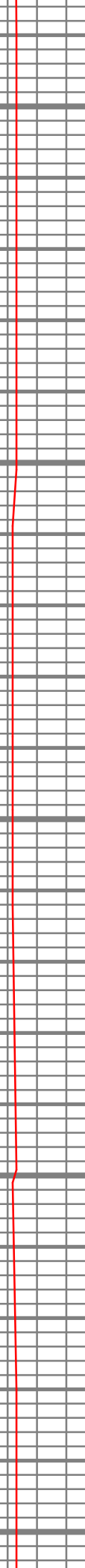


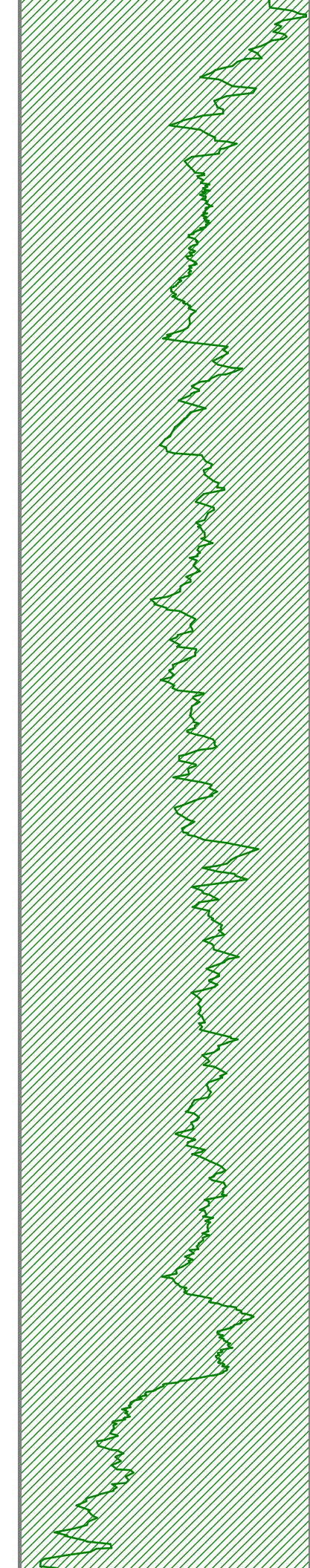
S: 165 MD: 10992.00 ft
Inc: 88.52 deg Az:
165.74 deg TVD:
6568.24 ft

S: 166 MD: 11056.00 ft
Inc: 89.06 deg Az:
166.50 deg TVD:
6569.59 ft

S: 167 MD: 11120.00 ft
Inc: 88.76 deg Az:
166.15 deg TVD:
6570.81 ft

S: 168 MD: 11183.00 ft
Inc: 89.76 deg Az:
166.73 deg TVD:
6571.62 ft



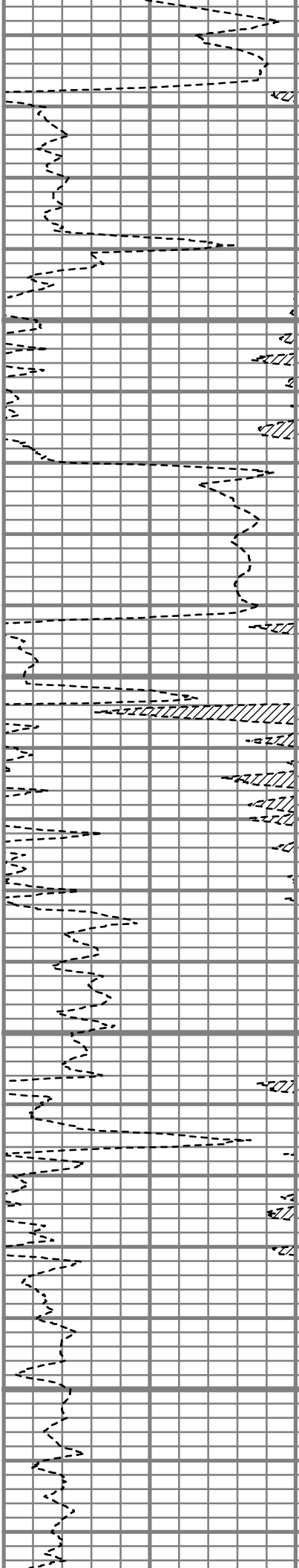


11250

11300

11350

11400

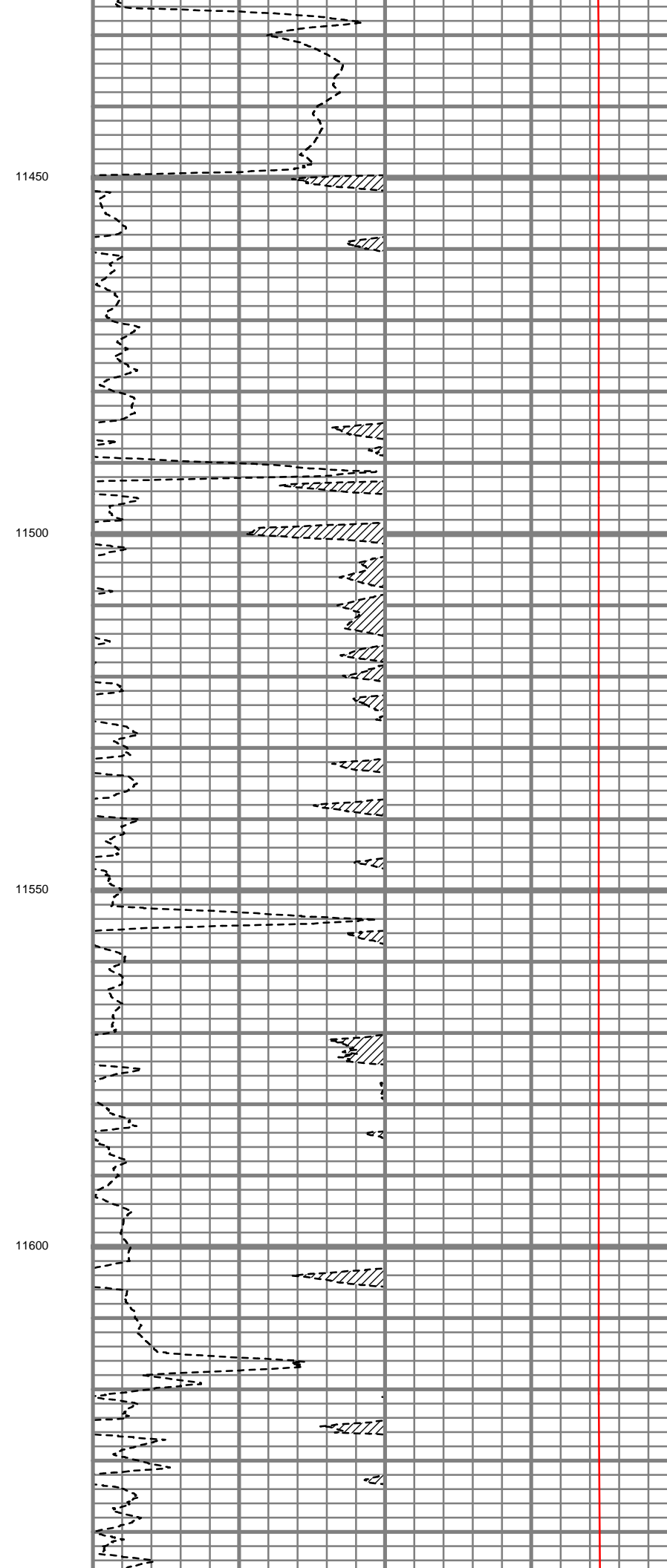
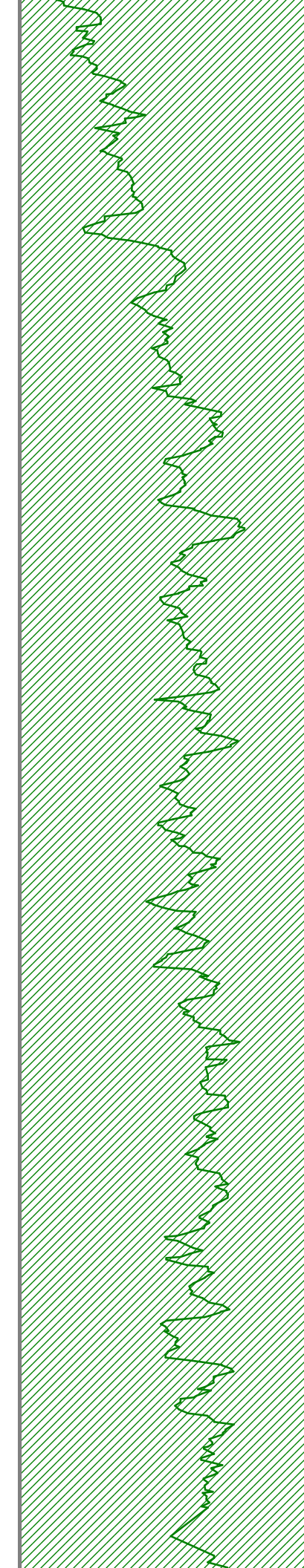


S: 169 MD: 11247.00 ft
Inc: 91.08 deg Az:
167.45 deg TVD:
6571.15 ft

S: 170 MD: 11310.00 ft
Inc: 89.36 deg Az:
165.90 deg TVD:
6570.91 ft

S: 171 MD: 11374.00 ft
Inc: 89.87 deg Az:
164.79 deg TVD:
6571.34 ft





S: 172 MD: 11438.00 ft
Inc: 88.99 deg Az:
165.02 deg TVD:
6571.98 ft

11450

S: 173 MD: 11502.00 ft
Inc: 88.55 deg Az:
165.21 deg TVD:
6573.35 ft

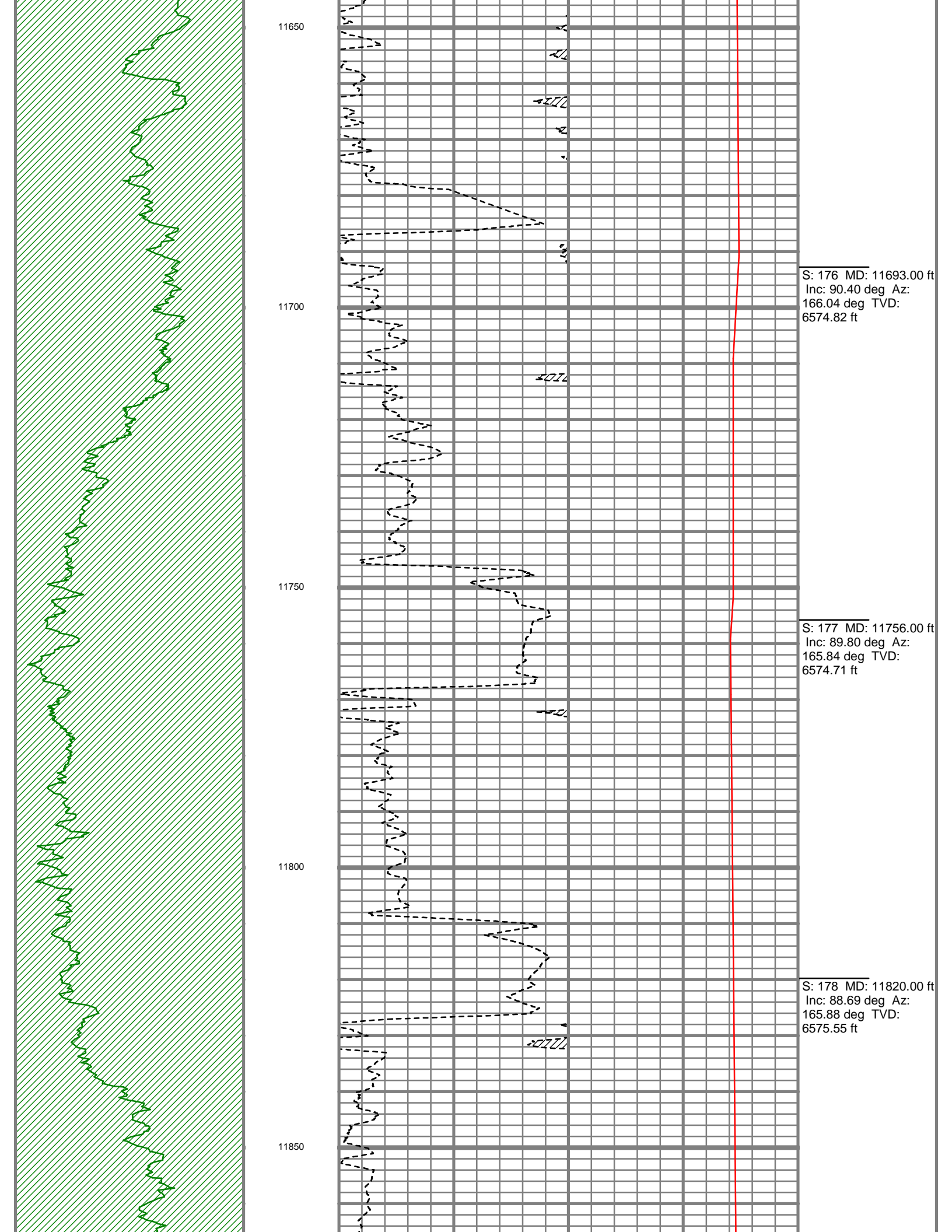
11500

S: 174 MD: 11566.00 ft
Inc: 89.40 deg Az:
165.77 deg TVD:
6574.49 ft

11550

S: 175 MD: 11629.00 ft
Inc: 89.80 deg Az:
166.36 deg TVD:
6574.93 ft

11600



11650

11700

11750

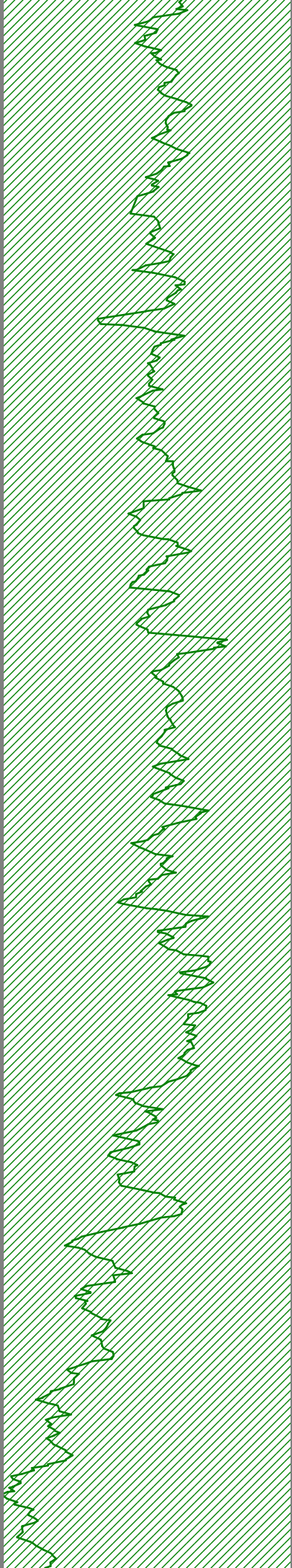
11800

11850

S: 176 MD: 11693.00 ft
Inc: 90.40 deg Az:
166.04 deg TVD:
6574.82 ft

S: 177 MD: 11756.00 ft
Inc: 89.80 deg Az:
165.84 deg TVD:
6574.71 ft

S: 178 MD: 11820.00 ft
Inc: 88.69 deg Az:
165.88 deg TVD:
6575.55 ft

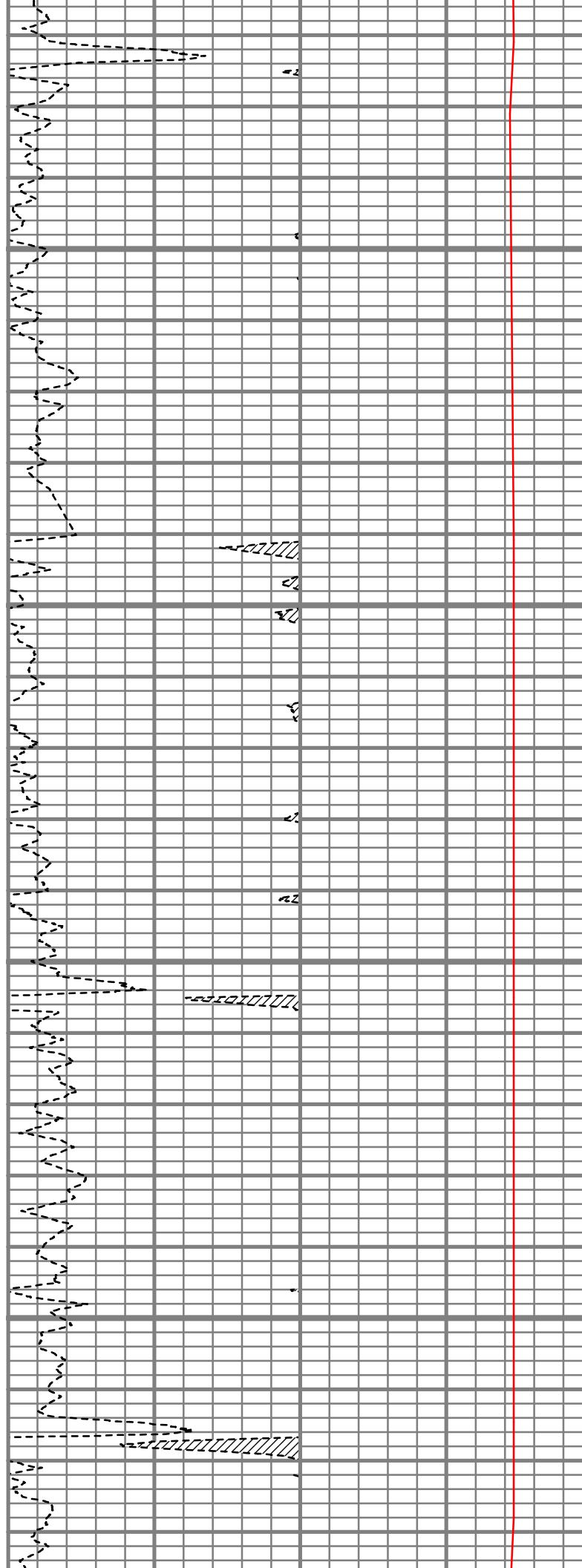


11900

11950

12000

12050

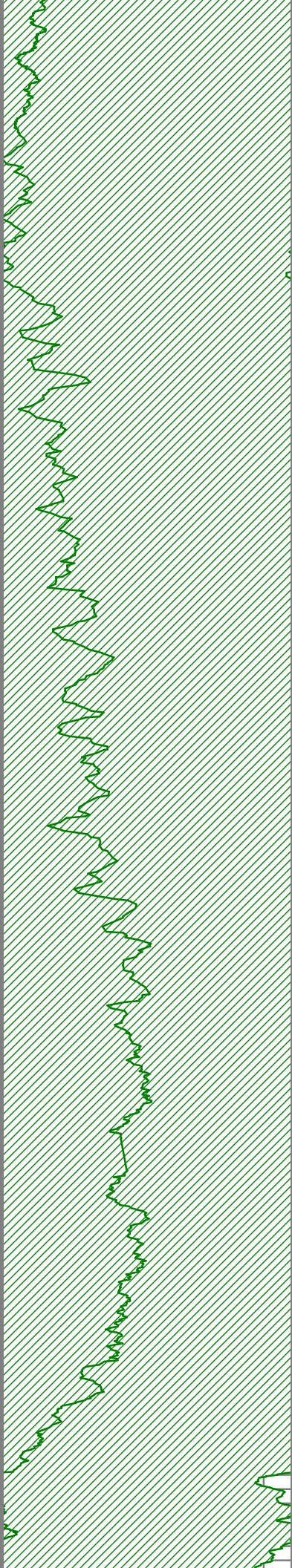


S: 179 MD: 11884.00 ft
Inc: 88.83 deg Az:
166.16 deg TVD:
6576.94 ft

S: 180 MD: 11947.00 ft
Inc: 89.36 deg Az:
166.49 deg TVD:
6577.94 ft

S: 181 MD: 12011.00 ft
Inc: 90.17 deg Az:
165.79 deg TVD:
6578.20 ft

S: 182 MD: 12074.00 ft
Inc: 90.80 deg Az:
165.60 deg TVD:
6577.66 ft



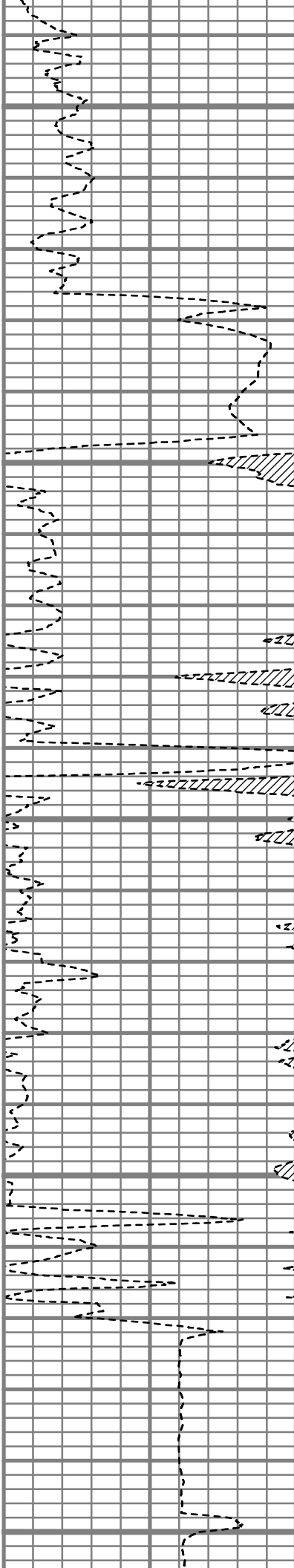
12100

12150

12200

12250

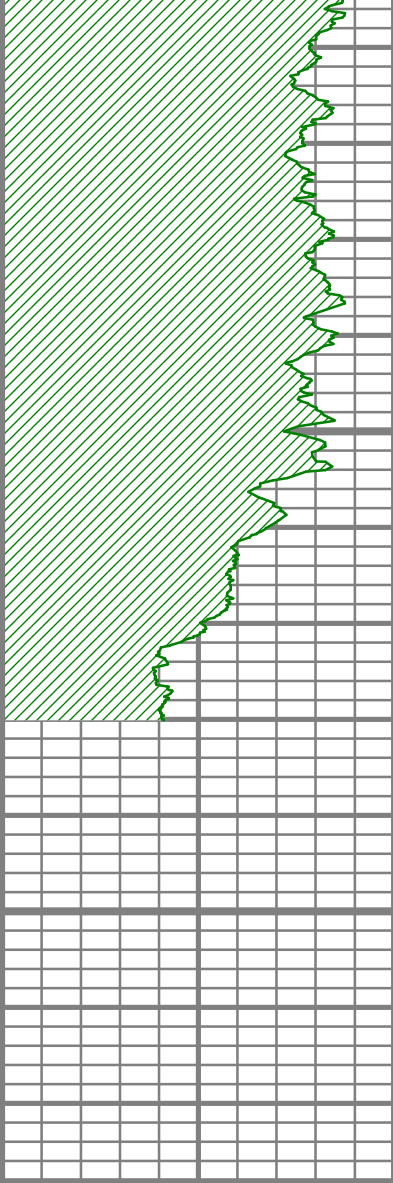
12300



S: 183 MD: 12137.00 ft
Inc: 90.17 deg Az:
166.38 deg TVD:
6577.13 ft

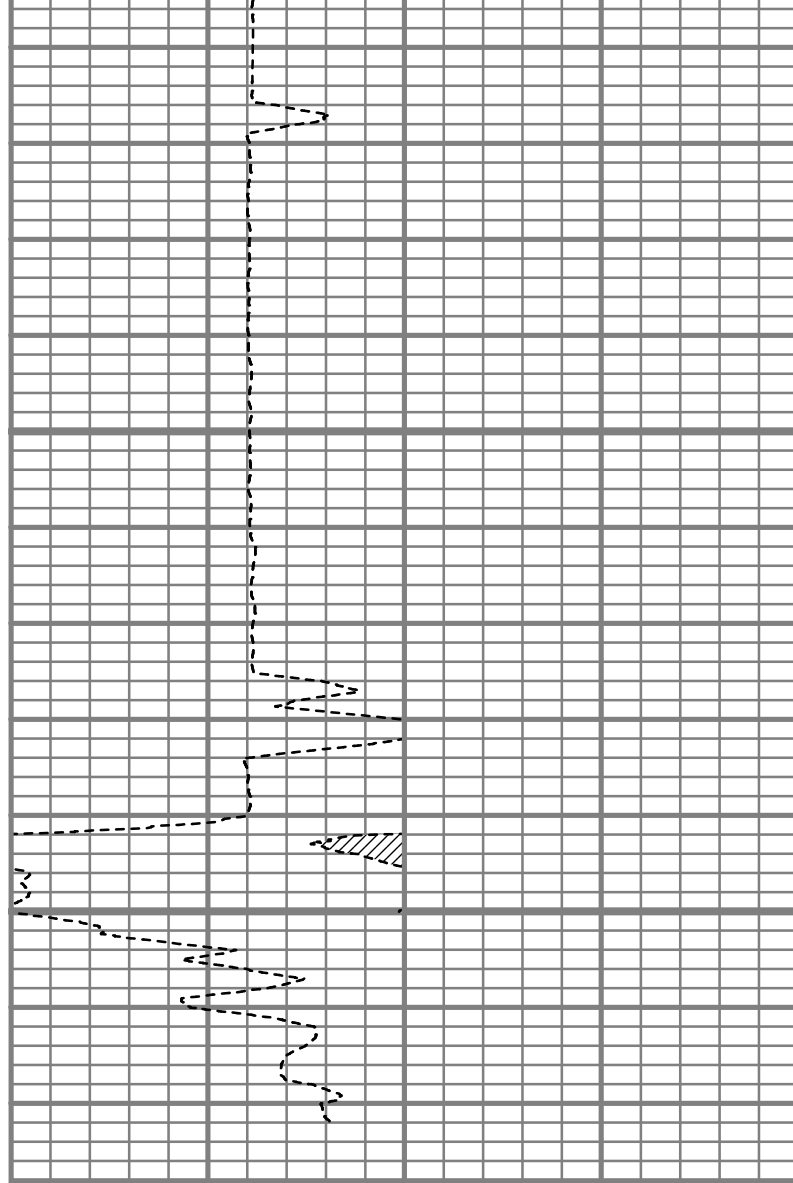
S: 184 MD: 12201.00 ft
Inc: 90.20 deg Az:
166.77 deg TVD:
6576.92 ft

S: 185 MD: 12263.00 ft
Inc: 91.11 deg Az:
167.14 deg TVD:
6576.21 ft



Gamma Ray		
200	Unit = aapi	400

MEASURED DEPTH
12400 (ft)



Rate of Penetration		
250	Unit = ft/hr	0

Tool Temperature		
0	Unit = degF	200

S: 186 MD: 12327.00 ft
Inc: 91.56 deg Az:
167.20 deg TVD:
6574.72 ft

S: 187 MD: 12365.00 ft
Inc: 91.96 deg Az:
166.82 deg TVD:
6573.56 ft

Comments



5" = 100'

FEET MD