



West Virginia Department of Environmental Protection
Office of Oil and Gas
WELL LOCATION FORM: GPS

API: 47-007-00080 P WELL NO.: WV 607695 (Fanny L. Hall)

FARM NAME: Fanny L. Hall

RESPONSIBLE PARTY NAME: EQT Production Company

COUNTY: Braxton DISTRICT: Birch

QUADRANGLE: Rosedale 7.5'

SURFACE OWNER: Clyde D. & Mary Lou Putnam

ROYALTY OWNER: TRW Mineral Account

UTM GPS NORTHING: 4282184

UTM GPS EASTING: 505208 GPS ELEVATION: 412 m (1,352 ft)

The Responsible Party named above has chosen to submit GPS coordinates in lieu of preparing a new well location plat for a plugging permit or assigned API number on the above well. The Office of Oil and Gas will not accept GPS coordinates that do not meet the following requirements:

- Datum: NAD 1983, Zone: 17 North, Coordinate Units: meters, Altitude: height above mean sea level (MSL) – meters.
- Accuracy to Datum – 3.05 meters
- Data Collection Method:
Survey grade GPS : Post Processed Differential
Real-Time Differential
Mapping Grade GPS : Post Processed Differential
Real-Time Differential
- Letter size copy of the topography map showing the well location.**

I the undersigned, hereby certify this data is correct to the best of my knowledge and belief and shows all the information required by law and the regulations issued and prescribed by the Office of Oil and Gas.

Ben Siefert
Signature

P.S. 2092
Title

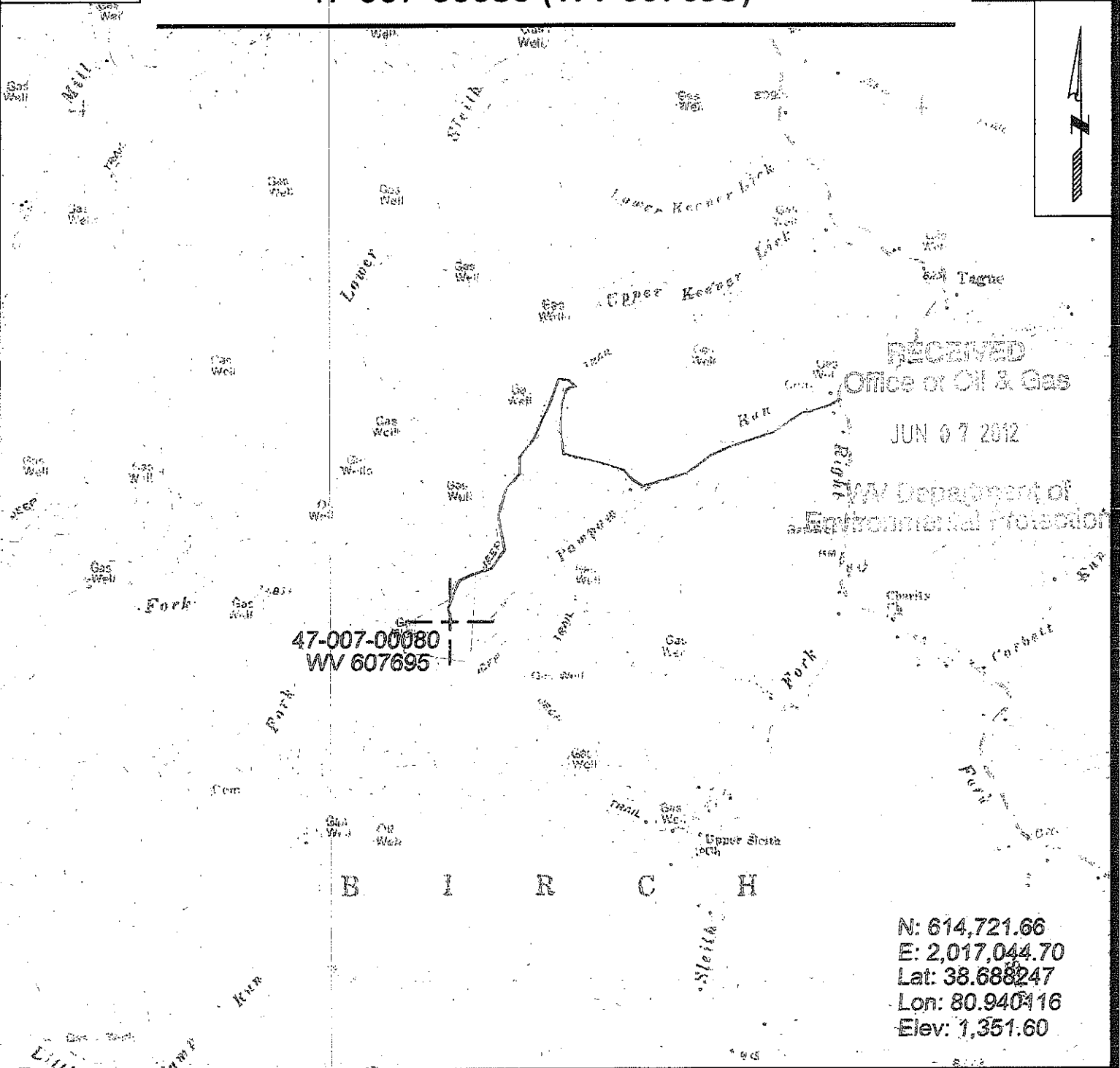
5-23-2012
Date

Topo Quad: Rosedale
County: Braxton
District: Birch

Scale: 1" = 2000' 7-00080P
Date: May 14, 2012
Project No: 40-02-00-07

47-007-00080 (WV 607695)

Topo



RECEIVED
Office of Oil & Gas

JUN 07 2012

WV Department of
Environmental Protection

47-007-00080
WV 607695

B I R C H

N: 614,721.66
E: 2,017,044.70
Lat: 38.688247
Lon: 80.940416
Elev: 1,351.60



SURVEYING AND MAPPING SERVICES PERFORMED BY:
ALLEGHENY SURVEYS, INC.
1-800-482-8606
P.O. BOX 438
BIRCH RIVER, WV 26610
PH: (304) 649-8606
FAX: (304) 649-8608

PREPARED FOR:
EQT Production Company
1710 Pennsylvania Ave.
Charleston, WV 25302