

701733P

WW-7  
8-30-06



West Virginia Department of Environmental Protection  
Office of Oil and Gas

**WELL LOCATION FORM: GPS**

API: 47-007-01733 WELL NO.: 3-S-245

FARM NAME: Duffield, Lovey

RESPONSIBLE PARTY NAME: Mike Ross

COUNTY: Braxton DISTRICT: Birch 1

QUADRANGLE: Rosedale 587

SURFACE OWNER: Roger White &/or Cheryl

ROYALTY OWNER: Anna J. Williams Et. AL.

UTM GPS NORTHING: 4277823.6

UTM GPS EASTING: 507387.8 GPS ELEVATION: 966

The Responsible Party named above has chosen to submit GPS coordinates in lieu of preparing a new well location plat for a plugging permit or assigned API number on the above well. The Office of Oil and Gas will not accept GPS coordinates that do not meet the following requirements:

1. Datum: NAD 1983, Zone: 17 North, Coordinate Units: meters, Altitude: height above mean sea level (MSL) – meters.
2. Accuracy to Datum – 3.05 meters
3. Data Collection Method:

Survey grade GPS  : Post Processed Differential   
Real-Time Differential

Mapping Grade GPS  : Post Processed Differential   
Real-Time Differential

4. Letter size copy of the topography map showing the well location.

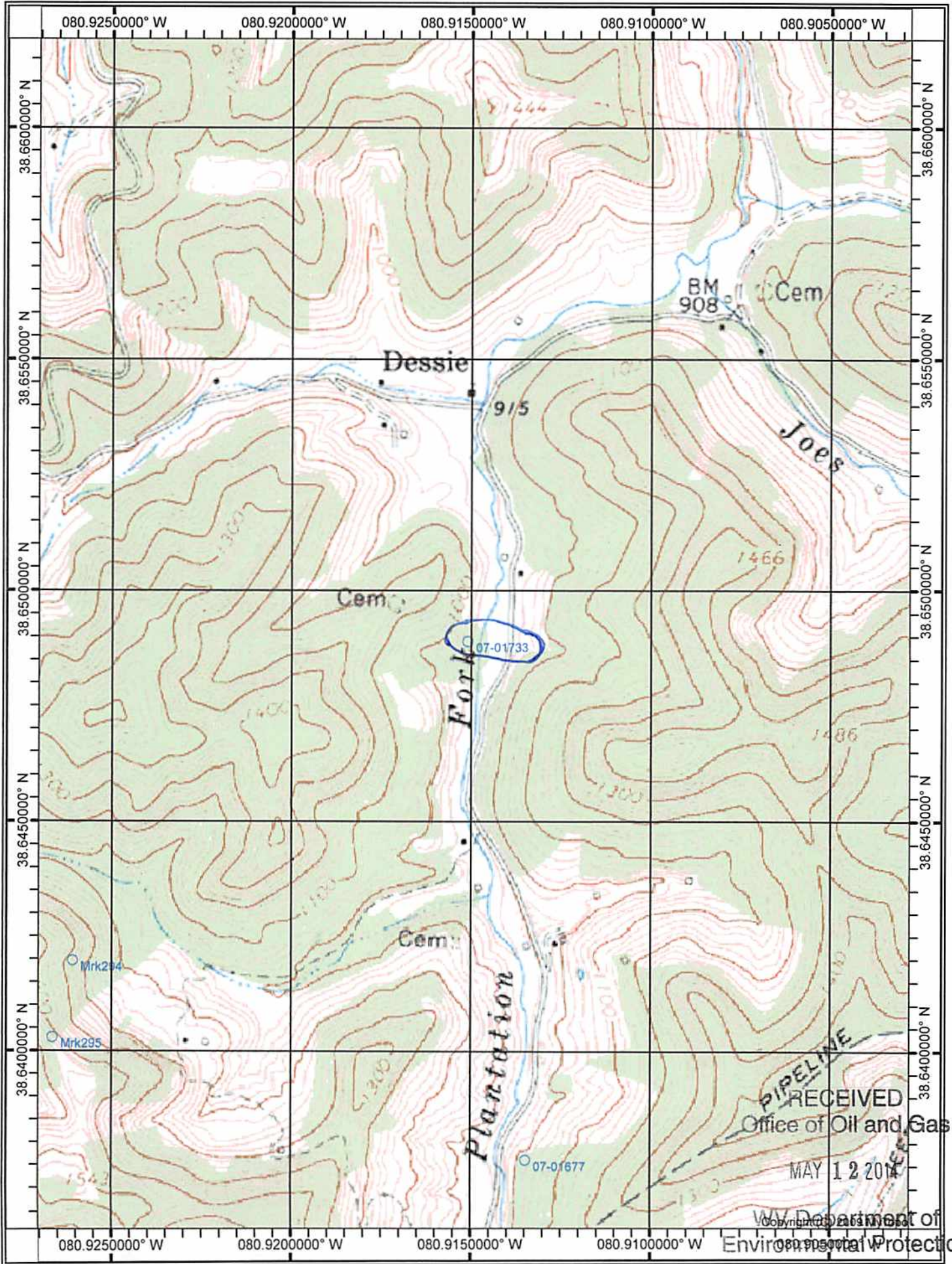
I the undersigned, hereby certify this data is correct to the best of my knowledge and belief and shows all the information required by law and the regulations issued and prescribed by the Office of Oil and Gas.

Mike Ross  
Signature

President  
Title

RECEIVED  
Office of Oil and Gas  
MAY 12 2014  
April 1, 2014  
Date  
WV Department of Environmental Protection

701733P



PIPELINE  
RECEIVED  
Office of Oil and Gas  
MAY 12 2014  
WV Department of  
Environmental Protection