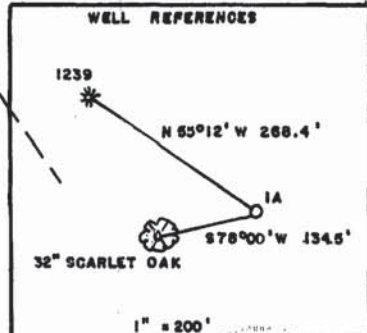
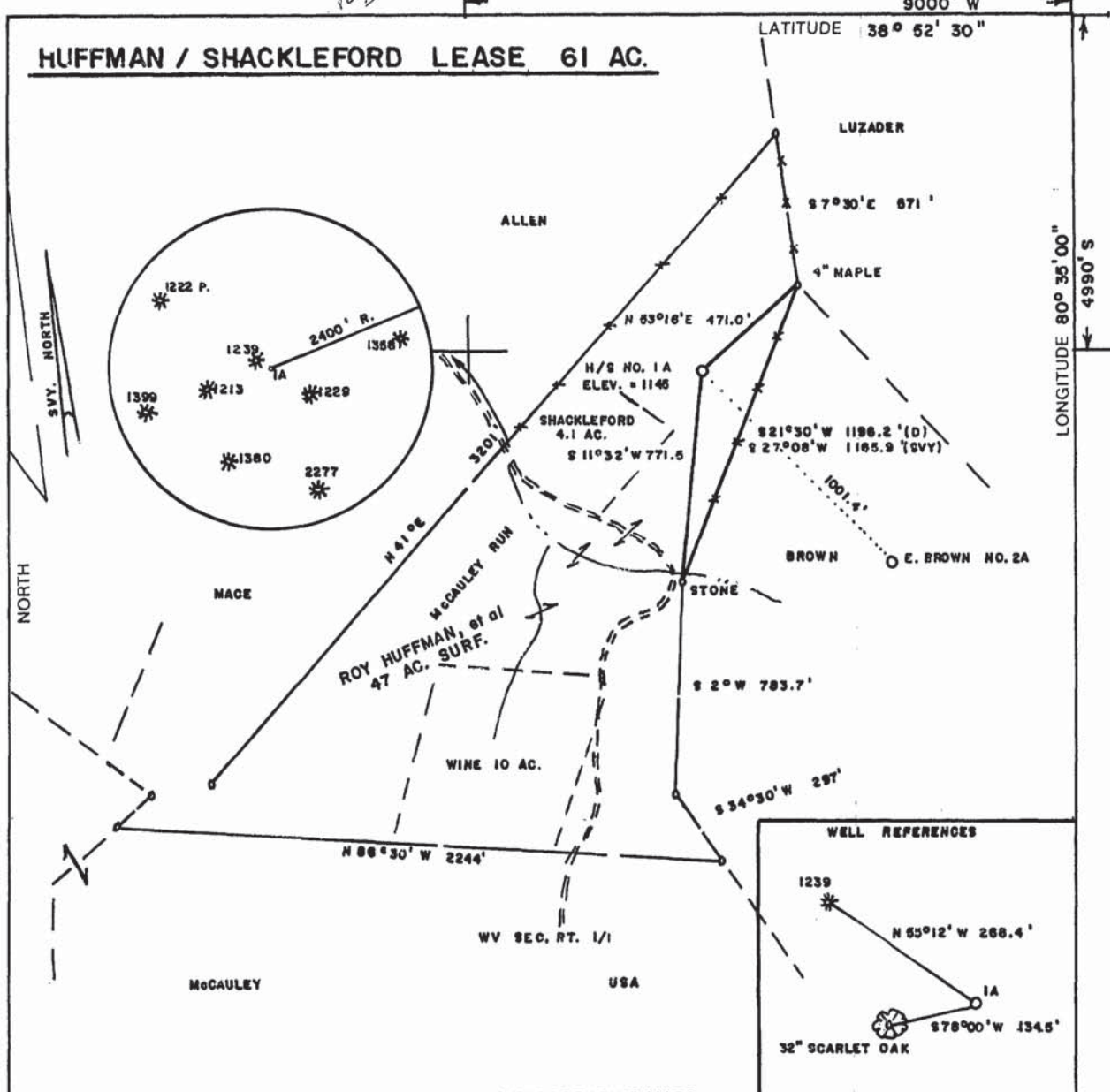


**HUFFMAN / SHACKLEFORD LEASE 61 AC.**



(+) DENOTES LOCATION OF WELL ON UNITED STATES TOPOGRAPHIC MAPS

FILE NO. \_\_\_\_\_  
 DRAWING NO. \_\_\_\_\_  
 SCALE 1" = 500'  
 MINIMUM DEGREE OF ACCURACY 1/200  
 PROVEN SOURCE OF ELEVATION TOP OF KNOB N. of LEASE  
ELEV. = 1358'

I THE UNDERSIGNED, HEREBY CERTIFY THAT THIS PLAT IS CORRECT TO THE BEST OF MY KNOWLEDGE AND BELIEF AND SHOWS ALL THE INFORMATION REQUIRED BY LAW AND THE REGULATIONS ISSUED AND PRESCRIBED BY THE DEPARTMENT OF ENERGY.

(SIGNED) Mark C. Echard  
 R.P.E. \_\_\_\_\_ L.L.S. 490

PLACE SEAL HERE

STATE OF WEST VIRGINIA  
 Division of Environmental Protection  
 OFFICE OF OIL AND GAS



DATE APRIL 9, 2003  
 OPERATOR'S WELL NO. 1A  
 API WELL NO. 47 007 02299

WELL TYPE: OIL  GAS  LIQUID INJECTION  WASTE DISPOSAL   
 (IF "GAS,") PRODUCTION  STORAGE  DEEP  SHALLOW   
 LOCATION: ELEVATION 1145' WATER SHED McCAULEY RUN of OIL CREEK  
 DISTRICT SALT LICK COUNTY BRAXTON  
 QUADRANGLE ORLANDO 7.5'  
 SURFACE OWNER ROY HUFFMAN, ET AL ACREAGE 47  
 OIL & GAS ROYALTY OWNER ROY HUFFMAN & RAY SHACKLEFORD LEASE ACREAGE 61

PROPOSED WORK: DRILL  CONVERT  DRILL DEEPER  REDRILL  FRACTURE OR STIMULATE  PLUG OFF OLD FORMATION  PERFORATE NEW FORMATION  OTHER PHYSICAL CHANGE IN WELL (SPECIFY) \_\_\_\_\_

PLUG AND ABANDON  CLEAN OUT AND REPLUG   
 TARGET FORMATION BENSON ESTIMATED DEPTH 4750'  
 WELL OPERATOR HORIZON ENERGY CORP. DESIGNATED AGENT ROBERT R. JONES II  
 ADDRESS SAND FORK ROAD BOX III ADDRESS SAND FORK ROAD BOX III  
SAND FORK, WV 26430 SAND FORK, WV 26430

FORM WW-6

COUNTY NAME  
 PERMIT

WR-35  
Rev (5-01)

DATE: 07-31-03  
API #: 47-007-02299

State of West Virginia  
Department of Environmental Protection  
Office of Oil and Gas

*AD*

Well Operator's Report of Well Work

Farm name: Huffman

Operator Well No.: Huffman 1A

LOCATION: Elevation: 1146'

Quadrangle: Orlando 7.5'

District: Salt Lick

County: Braxton

Latitude: 4,580 Feet South of

38 Deg. 52 Min. 30 Sec.

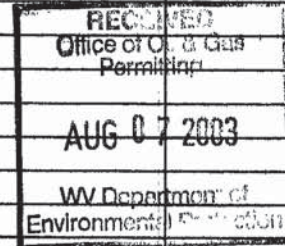
Longitude 9.000 Feet West of

80 Deg. 35 Min. 00 Sec.

Company:

Horizon Energy Corporation

Company:	Casing & Tubing	Used in drilling	Left in well	Cement fill up Cu. Ft.
<b>Address:</b>				
<b>P.O. Box 111 Sand Fork WV 26430</b>	8 5/8	775	753	215sks
<b>Agent: Robert Jones III</b>				
<b>Inspector: Craig Duckworth</b>	4 1/2	4774	4708	445 sks
<b>Date Permit Issued: 04/25/2003</b>				
<b>Date Well Work Commenced: 07/07/03</b>				
<b>Date Well Work Completed: 07/12/03</b>				
<b>Verbal Plugging:</b>				
<b>Date Permission granted on:</b>				
<b>Rotary X Cable Rig</b>				
<b>Total Depth (feet): 4774'</b>				
<b>Fresh Water Depth (ft.): 145'</b>				
<b>Salt Water Depth (ft.): N/A</b>				
<b>Is coal being mined in area (N/Y)? N</b>				
<b>Coal Depths (ft.): 618-621</b>				



OPEN FLOW DATA

Producing formation Benson Pay zone depth (ft) 4570-4610  
 Gas: Initial open odor MCF/d Oil: Initial open flow \_\_\_\_\_ Bbl/d  
 Final open flow 800 MCF/d Final open flow \_\_\_\_\_ Bbl/d  
 Time of open flow between initial and final tests \_\_\_\_\_ Hours  
 Static rock Pressure 475# psig (surface pressure) after 48 Hours

Second producing formation Balltown/Gordon Pay zone depth (ft) 2430-3520  
 Gas: Initial open flow \* \_\_\_\_\_ MCF/d Oil: Initial open flow \_\_\_\_\_ Bbl/d  
 Final open flow \* \_\_\_\_\_ MCF/d Final open flow \_\_\_\_\_ Bbl/d  
 Time of open flow between initial and final tests \_\_\_\_\_ Hours  
 Static rock Pressure \_\_\_\_\_ psig (surface pressure) after \_\_\_\_\_ Hours

\* = commingled zones

NOTE: ON BACK OF THIS FORM PUT THE FOLLOWING: 1). DETAILS OF PERFORATED INTERVALS, FRACTURING OR STIMULATING, PHYSICAL CHANGE, ETC. 2). THE WELL LOG WHICH IS A SYSTEMATIC DETAILED GEOLOGICAL RECORD OF ALL FORMATIONS,

Signed:

By: PRESIDENT

DATE: 8-05-2003

Huffman 1-A  
 47-007-02299  
 07-18-03

<u>Stage #</u>	<u>perfs</u>	<u>sand</u>	<u>avg rate</u>	<u>isip</u>
#1 Benson	4597-4628	450 sks	28 bpm	1956
#2 Balltown	3084-3520	400 sks	28 bpm	1963
#3 Speechley	2674-2688	200 sks	28 bpm	2841#
#4 Gordon	2442-2564	280	28bpm	1582#

Drillers Log

Clay	0	5	
Sd/Sh	5	479	
RR	479	490	
Sd/Sh	490	618	wet@ 145'
Coal	618	621	
Sd/Sh	621	1563	
Sd	1563	1600	
Sd/Sh	1600	1730	
LL	1730	1853	
Sd/Sh	1853	1872	
BL	1872	1936	gas ck @ 1718' = odor
Sd	1936	2045	
Sd/Sh	2045	2470	gas ck @ 2175' = odor
Sd	2470	2478	
Sd/Sh	2478	2735	gas ck @ 3024' = odor
Sd	2735	2837	
Sd/Sh	2837	4592	
Sd	4592	4625	gas ck @ 4490' = odor
Sd/Sh	4625	4774	
Td	4774		gas ck @ TD = odor

Electric Log Tops

Big Lime	1860
Gordon	2404
Benson	4570