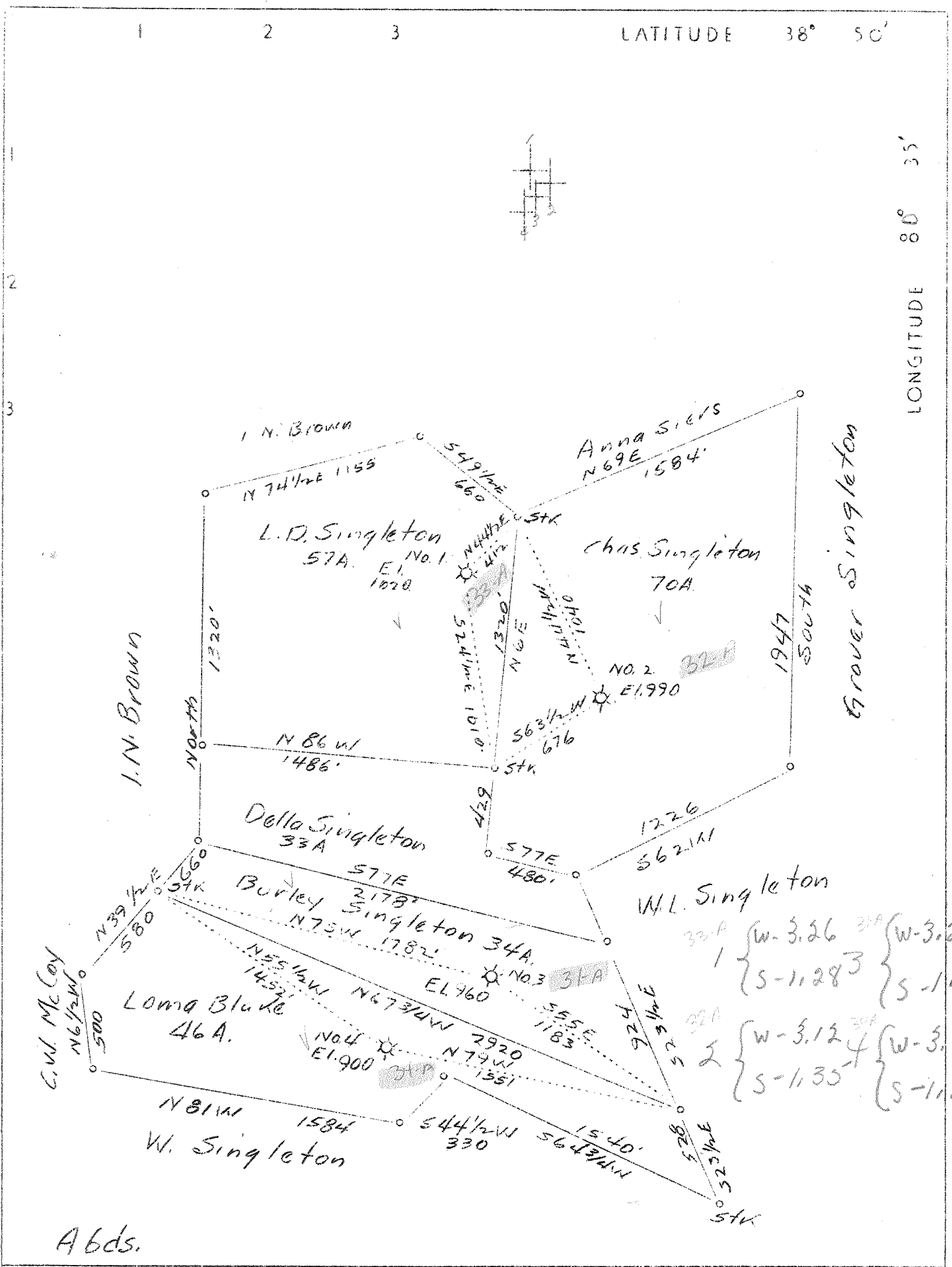


M



A bds.

Company	W. S. Perry
Address	Charleston, W. Va.
Farm	Singleton, L. C. Chas., & Burley & Loma Blake
Tracts	4 tracts
Acres	207.0
Well (Farm) No.	1, 2, 3 and 4
Elevation (SL)	Bar. - See plat
Quadrangle	Burnsville
County	Braxton
District	Salt Lick
Engineer	C. E. Krebs
Eng. Reg. No.	9
File No.	11-649
Date	Oct. 10, 1939
Scale	1" = 660'

STATE OF WEST VIRGINIA
 Department of Mines
 OIL & GAS DIVISION
 Charleston

WELL LOCATION MAP

File No. BRAX-32A-34A
 inclusive

x Denotes location of well on U. S. Topographic Maps, scale 1 to 62,500, latitude and longitude lines being represented by border lines as shown.

- Denotes one inch spaces on border line of original tracing.