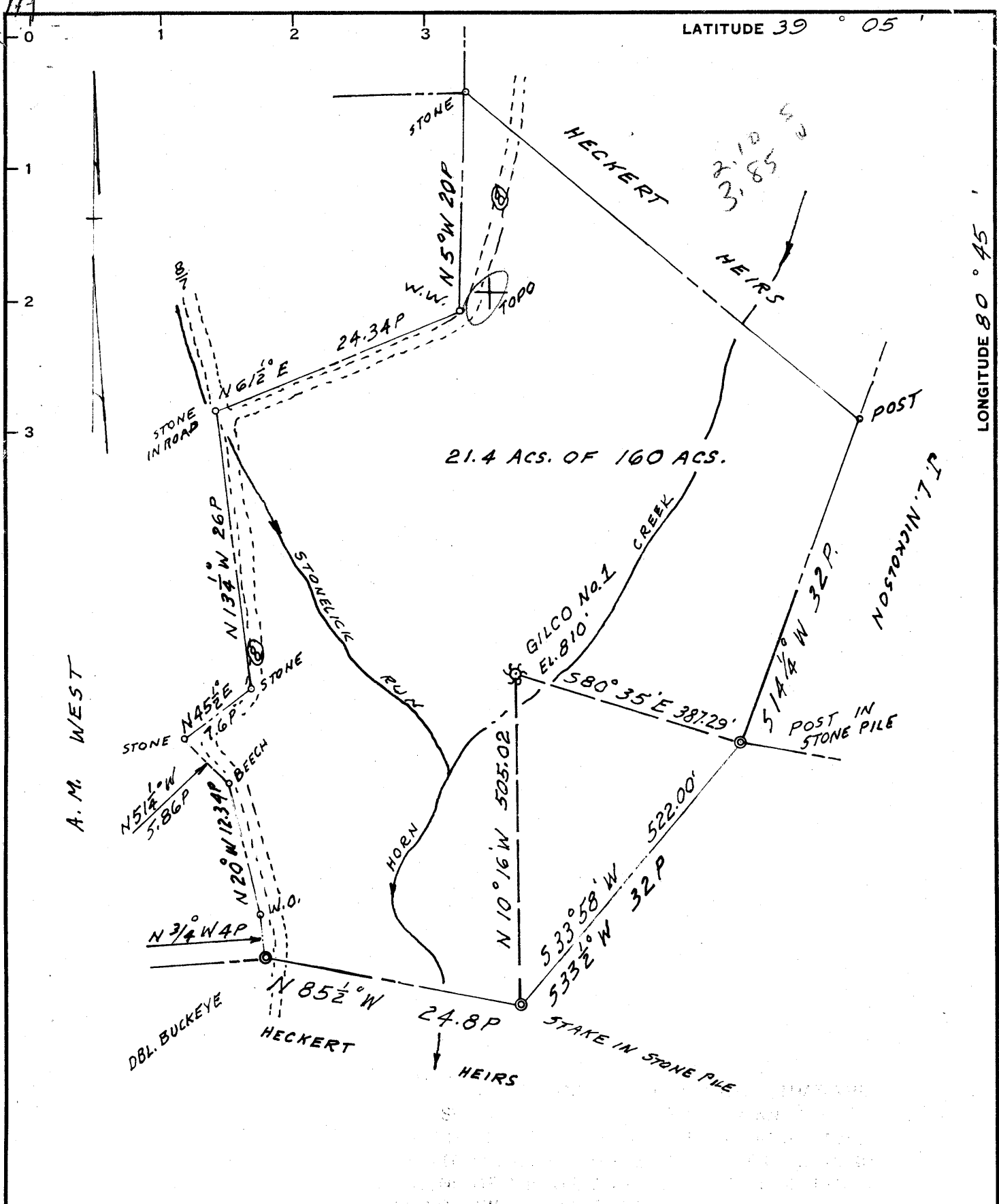


LATITUDE 39° 05'

LONGITUDE 80° 45'



21.4 ACS. OF 160 ACS.

A. M. WEST

Paul G. Dean

- New Location
- Drill Deeper
- Abandonment

B.M. DATUM = INTERSECTION OF W.V.A. 86 & 87
MIN. ERROR CLOSURE 1/2000

Company GILCO OIL & GAS, LTD.
 Address 2104 NORA STREET, PARKERSBURG, W.V.A.
 Farm HECKERT HEIRS
 Tract _____ Acres 21.4 Lease No. _____
 Well (Farm) No. GILCO No. 1 Serial No. ✓
 Elevation (Spirit Level) 810
 Quadrangle HOLBROOK SE
 County GILMER District TROY
 Engineer Paul G. Dean
 Engineer's Registration No. 1865
 File No. 136-7-2 Drawing No. _____
 Date 22 JUNE, 1965 Scale 1" = 200'

STATE OF WEST VIRGINIA
 DEPARTMENT OF MINES
 OIL AND GAS DIVISION
 CHARLESTON

WELL LOCATION MAP
 FILE NO. GIL-1742

+ Denotes location of well on United States Topographic Maps, scale 1 to 62,500, latitude and longitude lines being represented by border lines as shown.

- Denotes one inch spaces on border line of original tracing.

6-6-1965



7/20ths of 1/8th Royalty to:
Heckert Heirs, 3952 Willys Pkwy,
Toledo 12, Ohio (A.B. Stutler, Agent)

*miss Phillips
for packer
2-9-66*
Well # 4-1
Gilco #1 Well

13/20th of 1/8th Royalty to
R. E. Garrett, 816 W 2nd St
Weston, W. Va.
Quadrangle

STATE OF WEST VIRGINIA
DEPARTMENT OF MINES
OIL AND GAS DIVISION 3

WELL RECORD

Oil or Gas Well GAS
(KIND)

Permit No. Oil-1742

Company Gilco Oil & Gas Ltd.
Address 2104 Nora St., Parkersburg, W. Va.
Farm Heckert Hrs. Acres 21.4
Location (waters) Upper Horn Creek
Well No. 1 Elev. 810
District Troy County Gilmer
The surface of tract is owned in fee by Simon Walton
Address Cox*s Mills, W. Va.
See Above

Casing and Tubing	Used in Drilling	Left in Well	Packers
Size			Kind of Packer
16			
13			
10	110	None	Size of
8 3/4	462	462	
6 3/8	951	None	Depth set
5 3/16			
x3 4 1/2	2,111	2,111	Perf. top
2			Perf. bottom
Liners Used			Perf. top
			Perf. bottom

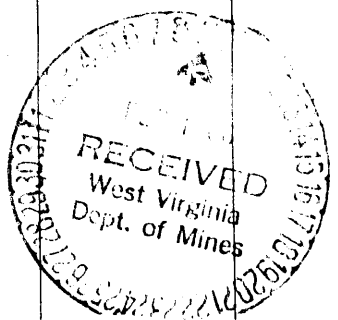
Mineral rights are owned by _____
Address _____
Drilling commenced July 1, 1965
Drilling completed August 26, 1965
Date Shot 9/22/65 From 1738 To 1760
20-3 1/2 Stick Jet Perforations
2-3-3/4 Tornado Jet Perforations
Open Flow None /10ths Water in _____ Inch
Volume _____ Cu. Ft.
Rock Pressure 10 lbs. 24 hrs.
Oil None bbls., 1st 24 hrs.
WELL ACIDIZED _____

CASING CEMENTED _____ SIZE _____ No. Ft. _____ Date _____
COAL WAS ENCOUNTERED AT _____ FEET _____ INCHES
_____ FEET _____ INCHES FEET _____ INCHES
_____ FEET _____ INCHES FEET _____ INCHES

WELL FRACTURED 948 Ebl. Water 58,000 lbs sand
RESULT AFTER TREATMENT 86,000 cu. ft. open flow test on gas (no oil)
ROCK PRESSURE AFTER TREATMENT 185 lbs 24 hrs.
Fresh Water None Feet _____ Salt Water None Feet _____

Berea

Formation	Color	Hard or Soft	Top	Bottom	Oil, Gas or Water	Depth	Remarks
Sand & Gravel			0	37			
Shale	Grey		37	42			
Sand			42	83			
Shale	Grey		83	95			
Red Rock			95	127			
Shale	Grey		127	265			
Red Rock			265	354			
Shell			354	430			
Red Rock			430	475			
Slate	Grey		475	500			
Lime			500	525			
Sand			525	565			
Slate			565	580			
Sand			580	615			
Slate	Shells		615	850			
Sand			850	960			
Slate	Shells		960	1015			
Sand			1015	1053			
Sand			1053	1150			
Salte	Dark		1150	1280			
Sand	Salty		1280	13.15			
Shale		Shells	1315	1435			
Sand	Salty		1435	1515			
Lime	Red		1515	1550			
Slate	Shells		1550	1570			
Lime (little)		Hard	1570	1619			
Lime (Big)		Hard	1619	1682			
Sand	KXXX		1682	1780			
Slate	Shells (Black)		1780	1895			
Sand	Grey	Hard	1895	2040			



019 Injun

Formation	Color	Hard or Soft	Top ³	Bottom	Oil, Gas or Water	Depth Found	Remarks
Slate			2040	2050			
Lime			2050	2065			
Sand <i>green</i>			2065	2098			Below
Shale			2098	2111			
						TOTAL DEPTH	
						2111	

Date November 18, 19__

APPROVED Gilco Oil & Gas Ltd., Owner

By A. P. Corwin
General Manager