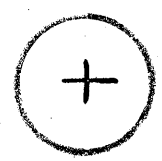
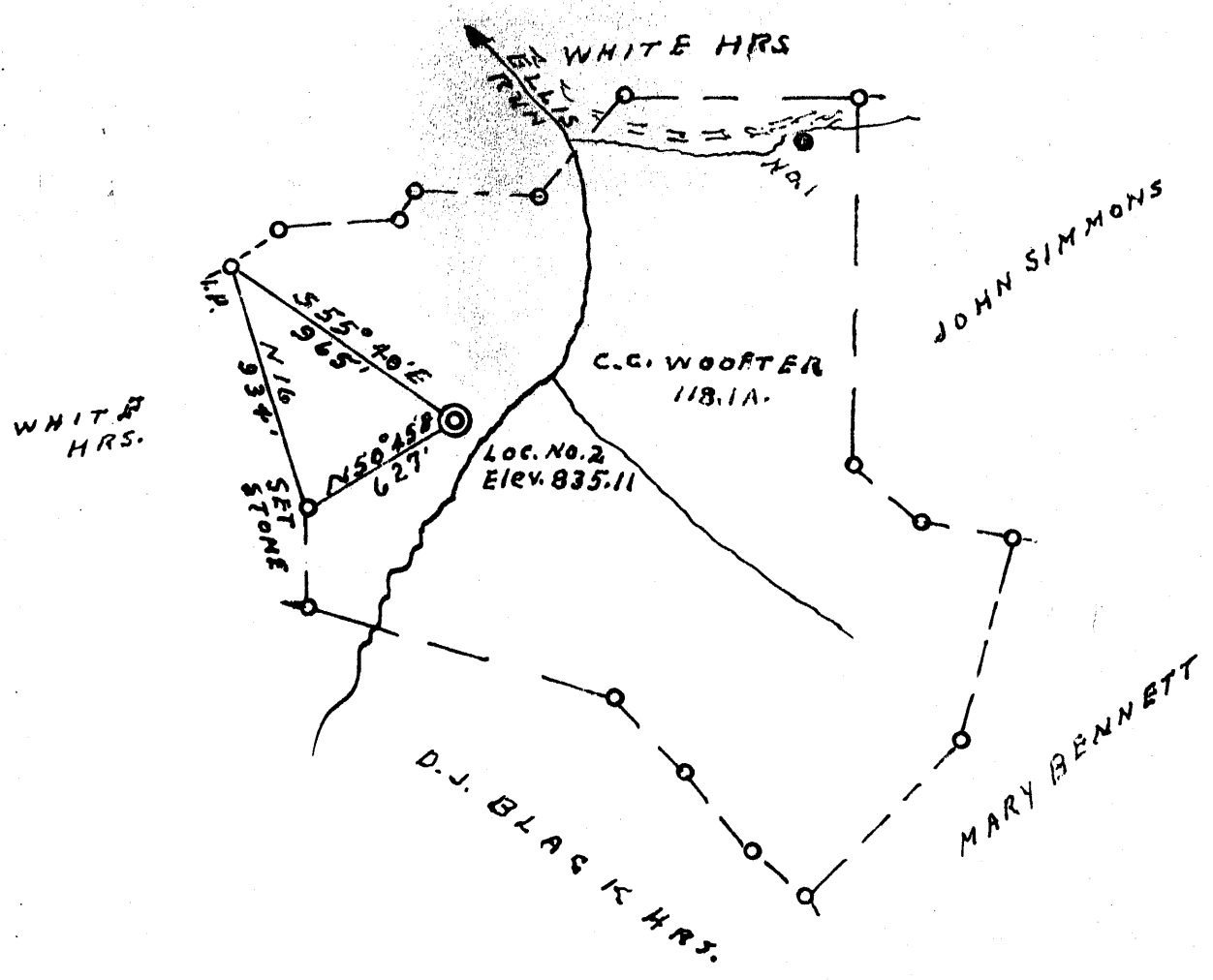


LATITUDE 39° 00'



0.72 S
1.97 W

LONGITUDE 80° 45'



Minimum Error of Closure 1' ON 2.00'

Source of Elevation WELL NO. 1 836.00

- Fracture.....
- New Location.....
- Drill Deeper.....
- Abandonment.....

I, the undersigned, hereby certify that this map is correct to the best of my knowledge and belief and shows all the information required by paragraph 6 of the rules and regulations of the oil and gas section of the mining laws of West Virginia.

Signed: L. F. Dye
Squares: N S E W

Company ROGERS & SCULL
 Address ARNOLDSBURG, W.VA
 Farm C.G. WOOFER
 Tract _____ Acres 118.1 Lease No. _____
 Well (Farm) No. 2 Serial No. _____
 Elevation (Spirit Level) 835.11
 Quadrangle GLENVILLE NE
 County GILMER District TROY
 Engineer L. F. Dye
 Engineer's Registration No. 809
 File No. _____ Drawing No. _____
 Date 8-20-70 Scale 1" x 40 FEET

STATE OF WEST VIRGINIA
DEPARTMENT OF MINES
OIL AND GAS DIVISION
CHARLESTON

WELL LOCATION MAP

FILE NO. Gilmer 107

+ Denotes location of well on United States Topographic Maps, scale 1 to 62,500, latitude and longitude lines being represented by border lines as shown.

— Denotes one inch spaces on border line of original tracing.



STATE OF WEST VIRGINIA
DEPARTMENT OF MINES
OIL AND GAS DIVISION 5

Rotary
Spudder
Cable Tools
Storage

Quadrangle Glouville

WELL RECORD

Oil or Gas Well Gas
(KIND)

Permit No. GH-2107

Company Rogers & Cull
Address c/o Lendol Rogers, Arnoldsburg, W. Va.
Farm C. C. Hofter Acres 118.1
Location (waters) Ellis Run of Landing Creek
Well No. 2 Elev. 835.11
District Troy County Gilmer
The surface of tract is owned in fee by C. C. Hofter
Address Cox's Mills, W. Va.
Mineral rights are owned by C. C. Hofter
Address Cox's Mills, W. Va.

Casing and Tubing	Used in Drilling	Left in Well	Packers
Size			Kind of Packer
16		17'	
13			
10 (Cemented in)		106'	Size of
8 3/4	812'		Depth set
6 5/8			
5 3/16			
4 1/2"		1665'	Perf. top <u>1639'</u>
2			Perf. bottom <u>1641'</u>
Liners Used			Perf. top
			Perf. bottom

Drilling commenced October 1, 1970
Drilling completed October 21, 1970
Date Shot From To
With
Open Flow /10ths Water in no test Inch
/10ths Merc. in Inch
Volume no test Cu. Ft.
Rock Pressure no test lbs. hrs.
Oil bbls., 1st 24 hrs.
WELL ACIDIZED
WELL FRACTURED 30,000 lbs. sand, 800 bbl. water, 500 gallon acid

CASING CEMENTED 4 1/2" SIZE 1665 No. Ft. 10/26/70 Date

COAL WAS ENCOUNTERED AT 1000 FEET INCHES
FEET INCHES FEET INCHES
FEET INCHES FEET INCHES

RESULT AFTER TREATMENT 20/10ths Mercury thru 2 in. flow meter 696 MCF 6PD 696,000
ROCK PRESSURE AFTER TREATMENT 800 lbs. in 24 hrs.
Fresh Water at 25' Feet Salt Water Feet

Formation	Color	Hard or Soft	Top	Bottom	Oil, Gas or Water	Depth	Remarks
Clay			0	16			
Sand			16	25	Water	25	
Red Rock			25	85			
White Slate			85	101			
Red Rock			101	145			
White Slate			145	160			
Red Rock			160	180			
Blue Slate			180	210			
Lime			210	215			
Red Rock			215	240			
Blue Slate			240	295			
Lime			295	320			
Blue Slate			320	330			
Lime			330	365			
Blue Slate			365	425			
Sand			425	435			
Black Slate			435	445			
Blue Slate			445	470			
Lime			470	510			
Blue Slate			510	540			
Gritty Lime			540	575			
Blue Slate			575	670			
Gritty Lime			670	705			
Sand			705	775			
Black Slate			775	810			
Sand		Xrock	810	895			
Black Slate			895	1025			
Sand			1025	1055			
Black Slate			1055	1120			

RECEIVED
NOV 9 1970

(over)

DEPT. OF MINES

NOV 23 1970

Formation	Color	Hard or Soft	Top <i>S</i>	Bottom	Oil, Gas or Water	Depth Found	Remarks
Sand			1120	1205			
Slate			1205	1220			
Sand			1220	1235			
Black Slate			1235	1365			
Sand			1365	1395	Water	1375	
Slate			1395	1400			
Sand			1400	1410			
Slate			1410	1415			
Pink Rock			1415	1420			
Black Slate			1420	1424			
Little Lime			1424	1450			
Slate			1450	1452			
Blue Bon. Sand			1452	1470	Gas Show	1465	
Slate			1470	1477			
Big Lime			1477	1535			
Sand (Injun)			1535	1640	Gas Show	1565	
Slate			1640	1660	Oil Show	1583	
					Gas Show	1626 - 1640	

Date November 2, 1870

APPROVED Hogera B. Scull, Owner

By London H. Scull, Partner
(Title)