

LATITUDE 39° 00'

LONGITUDE 80° 55'

1825
3.31W

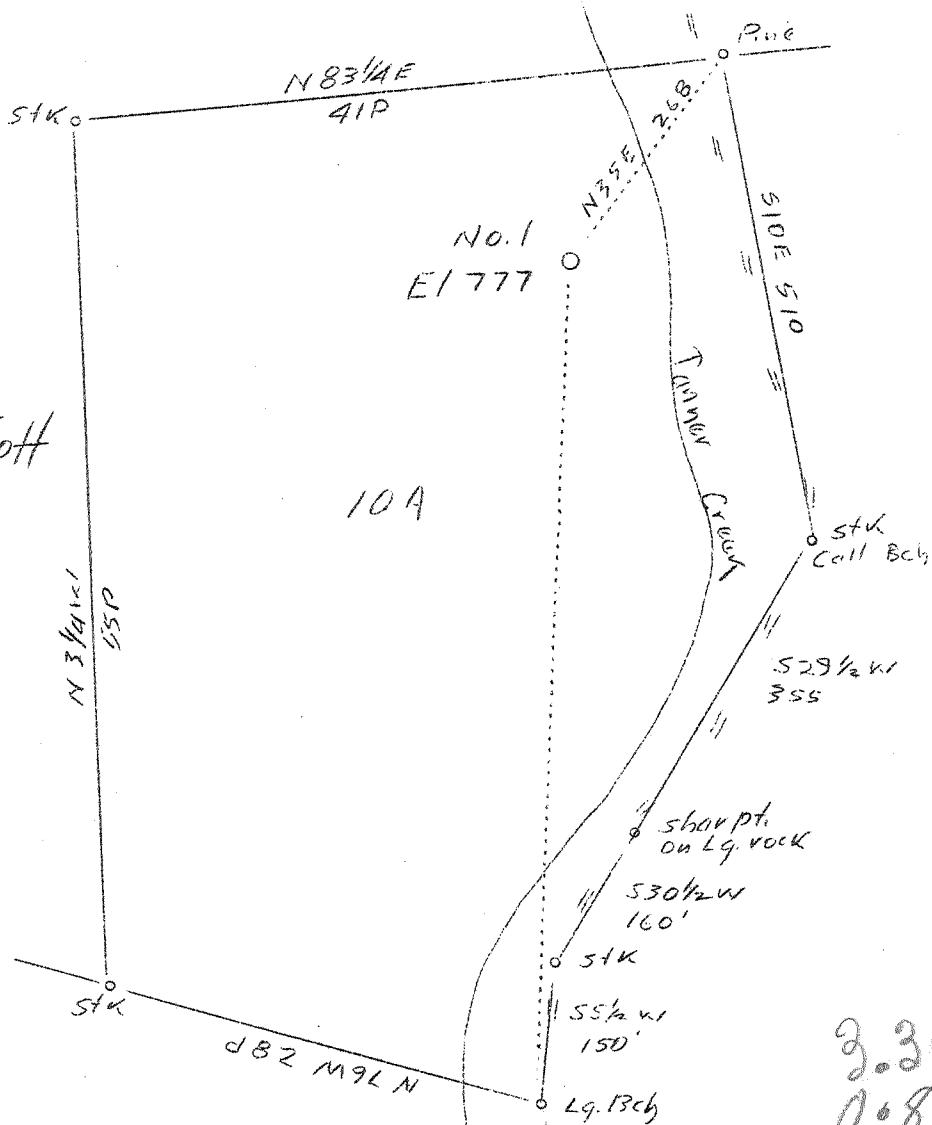


C. Wade Gott

C. Wade Gott

10A

I. N. Hardman & Lloyd Wells



3.36W
0.858

I. N. Hardman & Lloyd Wells

Abd.

Company South Penn Oil Co.
 Address 411 Seventh Ave., Pittsburgh, Pa.
 Farm Asa Hardman
 Tract Acres 13 Lease No. 70846
 Well (Farm) No. 1 Serial No.
 Quadrangle Glenville *N.W.*
 County Gilmer
 District De Kalb
 Engineer E.C. Tabler
 Engineer's Registration No.
 File No. Drawing No.
 Date Jan. 4, 1938 Scale 1"-200'

STATE OF WEST VIRGINIA
 Department of Mines
 OIL AND GAS DIVISION
 CHARLESTON

WELL LOCATION MAP
 File No. *GIL-106A*

+ Denotes location of well on United States Topographic Maps, scale 1 to 62,500, latitude and longitude lines being represented by border lines as shown.

— Denotes one inch spaces on border line of original tracing.

TABLE 10
RECORDS OF WELLS ABANDONED
FEBRUARY, 1938

Permit No.	Name of Applicant	Farm	Well No.	Elevation	CASING						Coal Thickness	Oil	Gas	Salt Water	Fresh Water	Total Depth
					13 In	10 In	8 In	6 In	5 In	2 In						
11 P	CABELL COUNTY Larner Gas Company	W. M. Janey	L 83		36'	508'	1618'						3415'	600'	3672'	
205	DODDRIDGE COUNTY Hope Constr. & Ref. Co.	G. W. Albers	1237	1159'	727'	1260'	2106'	2284'	2840'	740'	24"	2220'		1630'	2850'	
206	Hope Constr. & Ref. Co.	G. W. Albers	1238	1103'	709'	1254'	2141'	2800'	2782'	720'	36"	2350'	2150'	1580'	2782'	
207	Hope Constr. & Ref. Co.	W. E. Wolfe	200	1060'	374'	1243'	2076'		2181'	187'	36"	2142-44'			2181'	
208	Hope Constr. & Ref. Co.	W. E. Wolfe	522	921'	357'	1096'	1940'		1980'	570'	36"	1978'		1200'	2037'	
105	GILMER COUNTY South Penn Oil Co.	W. H. Ayers	2	973.51'	150'	1020'	1800'					2270-77'	1927'		2277'	
106	South Penn Oil Co.	Asa Hardman	1	777'	142'	875'	1313'								1636'	
107	South Penn Oil Co.	Lafayette Harden	8	988.54'	227'	1000'	1532'					1810-16'			1925'	
289 P	K. F. Ermlich	J. A. Jefferies	2		120'	716'								1300'	1500'	
419	HARRISON COUNTY South Penn Oil Co.	Nathan Guff	45	1061.69'	280'	1328'	2326'						2071'		2938'	
													2903'		2912'	