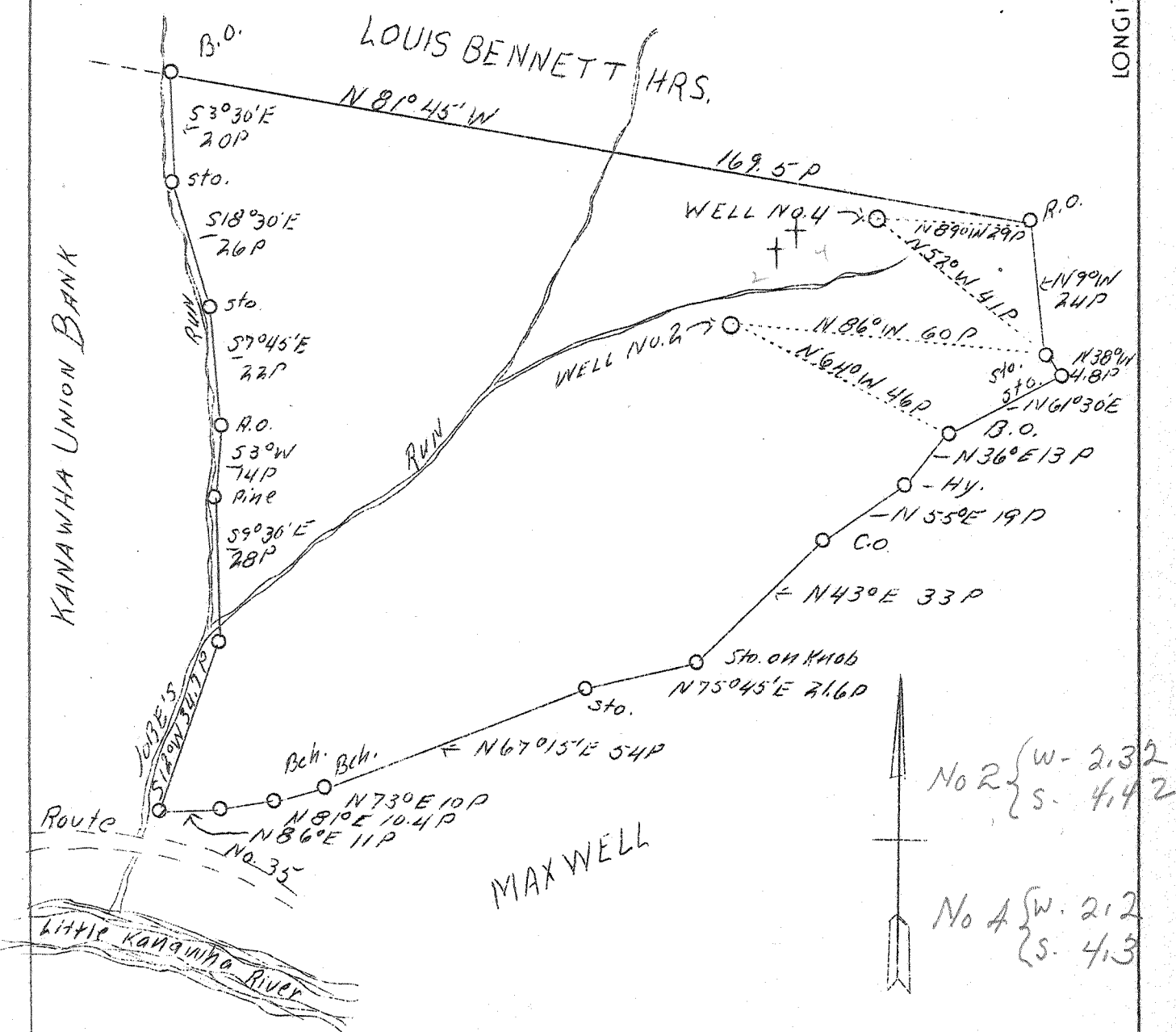


LATITUDE 39000'

LONGITUDE 80° 55'

119	4.385
# 2	2.29 W
120	4.265
# 4	2.17 W



No 2 { W - 2.32
 S - 4.42

No 4 { W - 2.12
 S - 4.13

ABD.

Tape Sheet No 3

Company	Snyder Bros. & Zinn
Address	Parkersburg, W.Va.
Farm	Kanawha Union Bank
Acres	100
Well(Farm)No.	2 & 4
El.(S.L.)	2 - 905' 4 - 980'
Quadrangle	Glenville
County	Gilmer
District	DeKalb
Eng/	J.E. Anderson
Eng. Reg. No.	Surveyor
Date	5/31./39
Scale	1" = 30 Po.

STATE OF WEST VIRGINIA
Department of Mines
OIL AND GAS DIVISION
Charleston

WELL LOCATION MAP

File No. Gil-119-120-A
2 # 4

x Denotes location of well on U.S. Topographic Maps, scale 1 to 62,500, latitude and longitude lines being represented by border lines as shown.

- Denotes one inch spaces on border line of original tracing.