

Latitude 39° 00' 00"

Longitude 80° 42' 30"

2.192  
0.10W

Topo Location

7.5' Loc. \_\_\_\_\_ 15' Loc. \_\_\_\_\_  
   (calculated) \_\_\_\_\_

Company \_\_\_\_\_

Farm Amanda B Connor #1

15' Quad \_\_\_\_\_  
 (sec.)

7.5' Quad Gilmer

District Glennville

**WELL LOCATION PLAT**

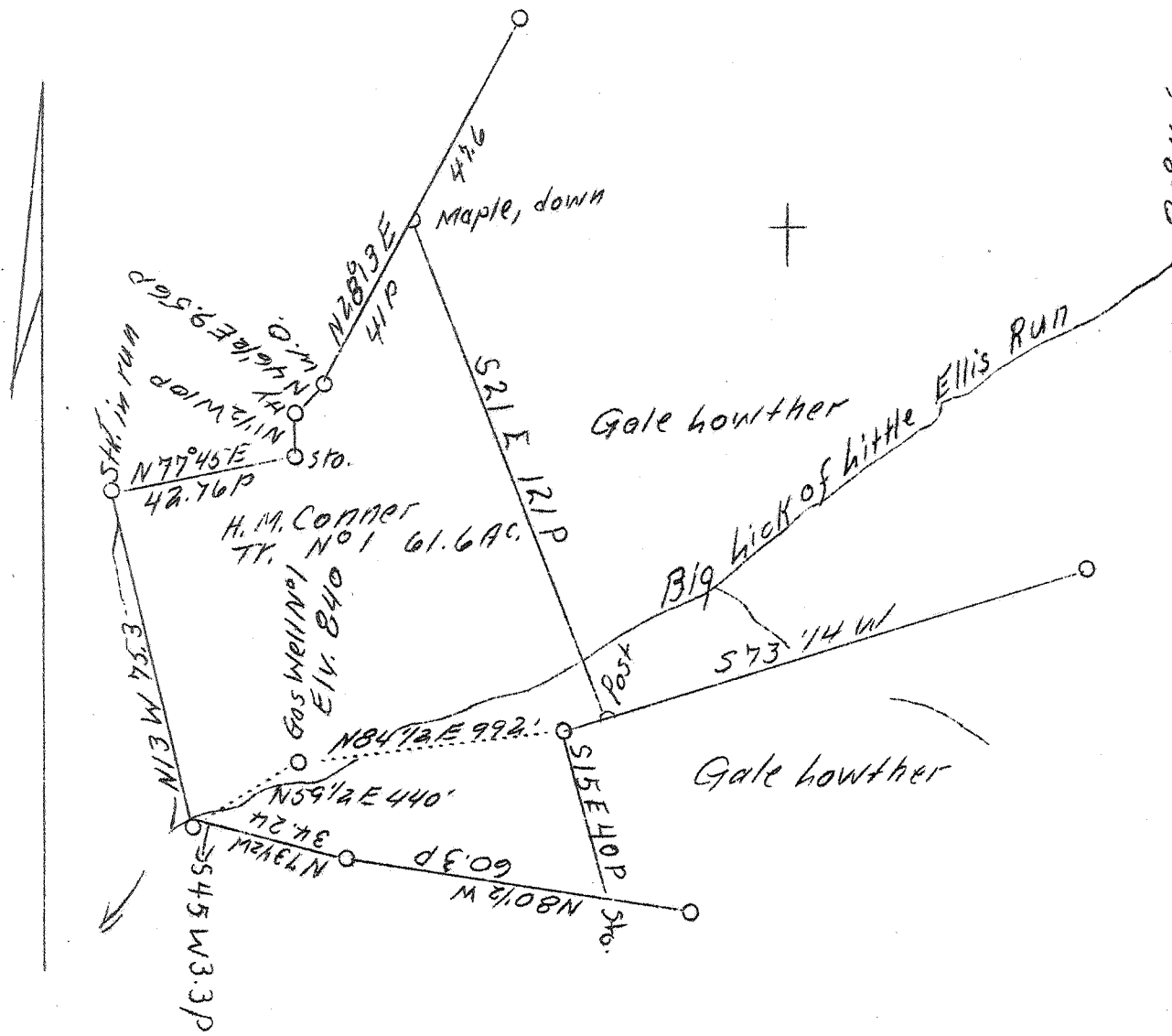
County 021 Permit 70016

Now: 021 - 30130

2.19 S  
2.32 W

LATITUDE 39° 00'

LONGITUDE 80° 40'



S-2.22  
W-2.37

coal not operated  
HBD

Company	J. M. Raad
Address	Salem, W. Va.
Farm	H. M. Conner
Tract	1
Acres	61.6
Well (Farm) No.	1
Elevation (SL)	840
Quadrangle NW	Burnsville
County	Gilmer
District	Glenville
Engineer	C. C. Fittro C. E.
Eng. Reg. No.	818
File No.	XYZ
Drawing No.	120
Date	August 10, 1939
Scale	40 poles - 1"

STATE OF WEST VIRGINIA  
Department of Mines  
OIL & GAS DIVISION  
Charleston

WELL LOCATION MAP

File No. Gil-130-A  
WAS: 021-70016

x Denotes location of well on U. S. Topographic Maps, scale 1 to 62,500, latitude and longitude lines being represented by border lines as shown.

- Denotes one inch spaces on border line of original tracing.

# 717

Glenville District, Gilmer County, W. Va.  
South Penn Oil Co.

	Top.	Bottom.
Conductor	0	16
Coal	325	
Dunkard Sand (Big)	650	709
Salt Sand	1300	1393
Maxton Sand	1515	1550
Pencil Cave	1585	1600
Big Lime	1600	1660
Big Injun Sand	1660	1990
Gordon Sand (shells)	2410	
5th Sand	2622	2626
Total depth		2703