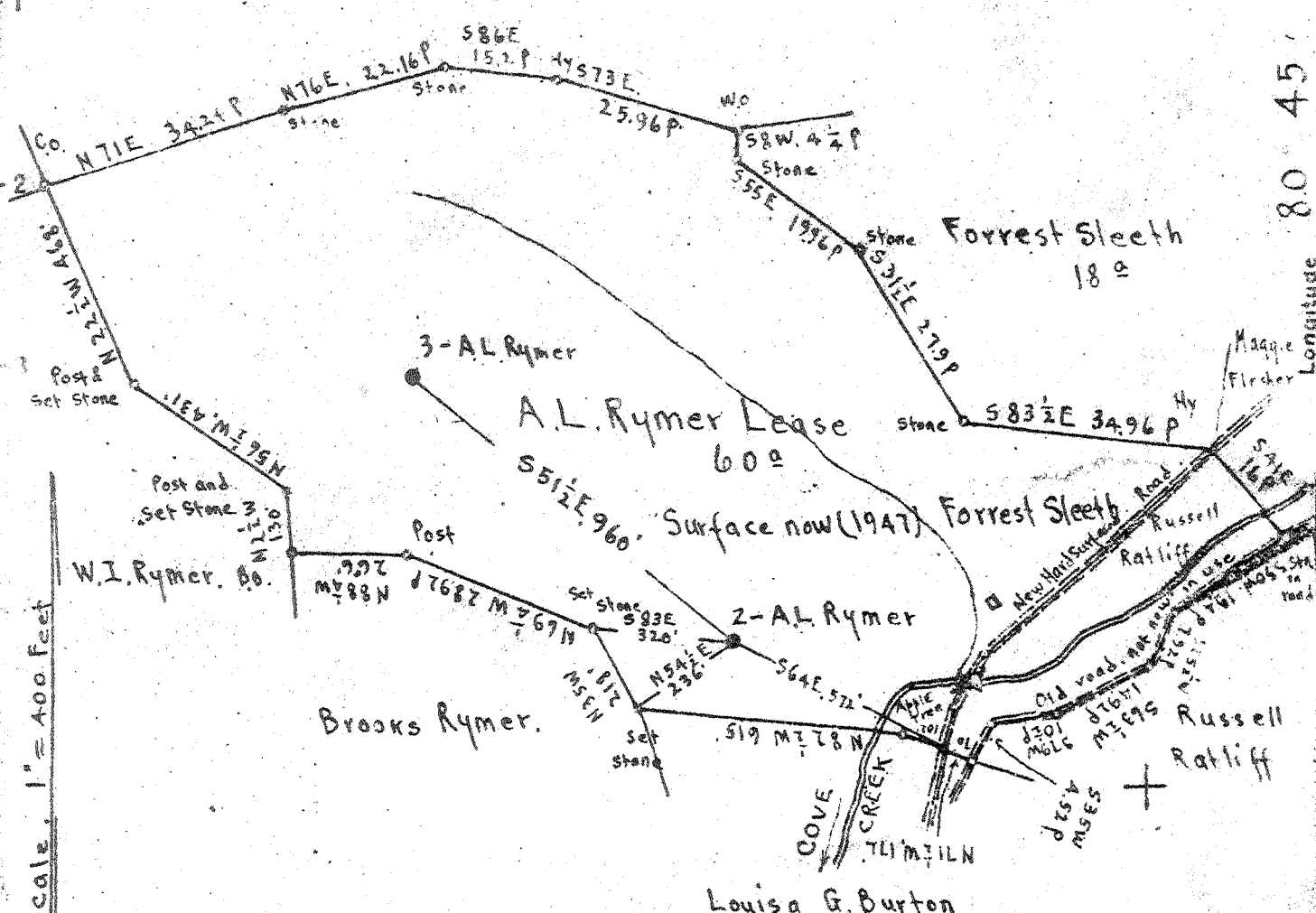


5,675-

.97 W Delbert Cole

53°



Longitude 80 45

Scale, 1" = 400 Feet

Surface: Forrest Sleeth, Troy, Gilmer Co., W. Va.  
There is no Commercial Coal.

- New Location
- Drill Deeper
- Abandonment

Mag N 17 S 25 W 9

Company Broadwater Welch and Travis  
 Address CO Travis, West Union W. Va.  
 Farm A. L. Rymer  
 Tract \_\_\_\_\_ Acres 60° Lease No. \_\_\_\_\_  
 Well (Farm) No. 2 Serial No. \_\_\_\_\_  
 Elevation (Spirit Level) Floor 950.64  
 Ground 948.14  
 Quadrangle HOLBROOK  
 County Gilmer District Troy  
 Engineer E. C. Tabler  
 Engineer's Registration No. \_\_\_\_\_  
 File No. \_\_\_\_\_ Drawing No. \_\_\_\_\_  
 Date July 22nd 1947 Scale 1" = 400 Feet

STATE OF WEST VIRGINIA  
 DEPARTMENT OF MINES  
 OIL AND GAS DIVISION  
 CHARLESTON

WELL LOCATION MAP  
 FILE NO. GIL-239-A

+ Denotes location of well on United States Topographic Maps, scale 1 to 62,500, latitude and longitude lines being represented by border lines as shown.

- Denotes one inch spaces on border line of original tracing.