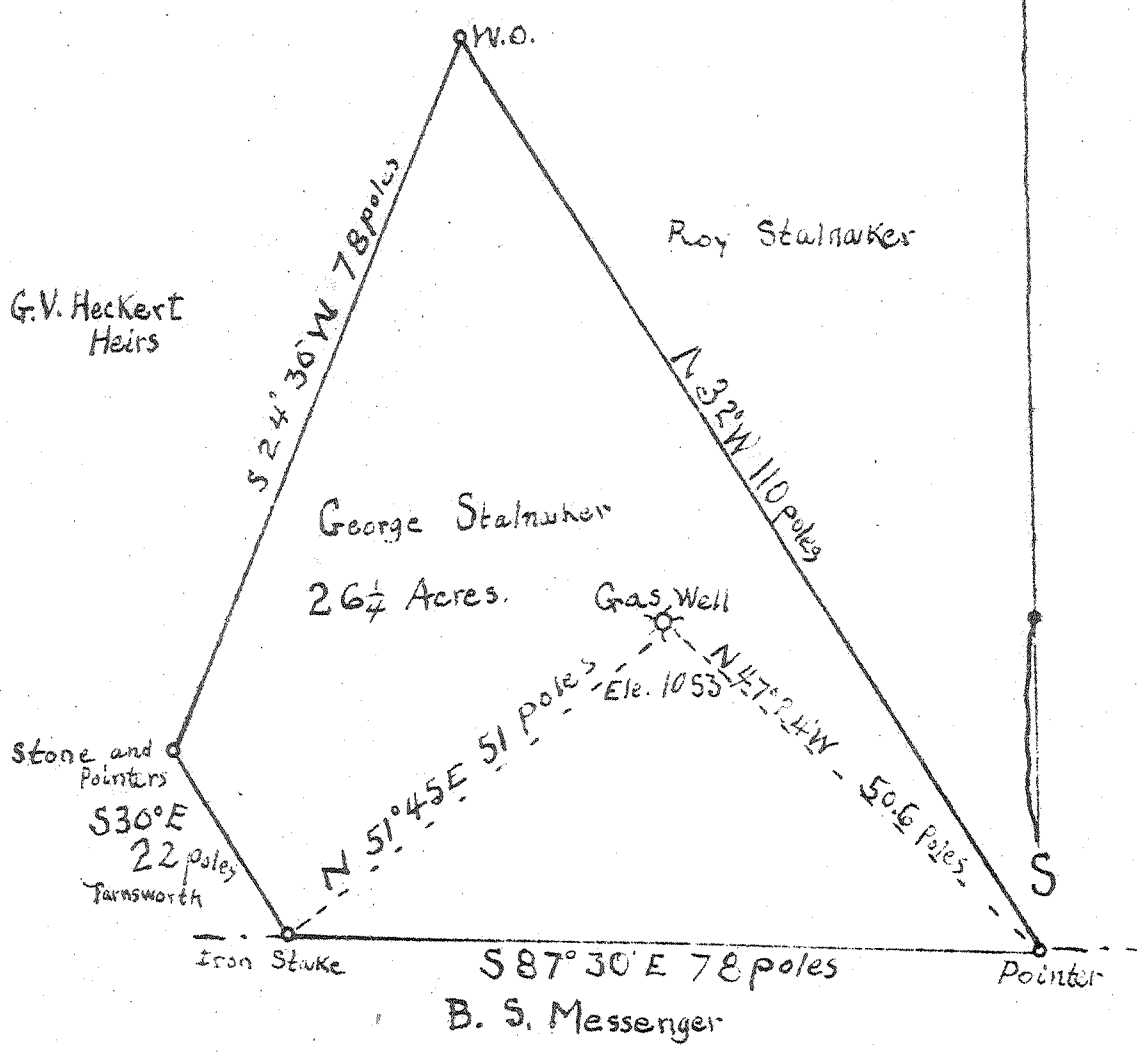
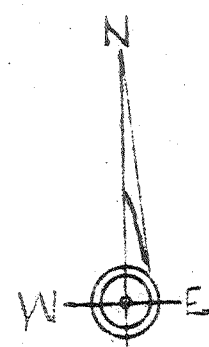


Latitude 39° 05'

4.835
.66 W

Longitude 80° 45'



New Location
 Drill Deeper
 Abandonment

Company	F. G. Bish
Address	Clarksburg, W. Va.
Farm	George Stalnaker
Tract	Acres 26 1/4 Lease No.
Well (Farm) No	1 Serial No.
Elevation (Spirit Level)	1053
Quadrangle	Holbrook
County	Gilmer District Troy
Engineer	M. L. B. Linger
Engineer's Registration No	261
File No	Drawing No.
Date	Oct. 9, 1947 Scale 1" = 20 poles

STATE OF WEST VIRGINIA
 DEPARTMENT OF MINES
 OIL AND GAS DIVISION
 CHARLESTON

WELL LOCATION MAP
 FILE NO. 5111-246-A

+ Denotes location of well on United States Topographic Maps scale 1 to 62,500. latitude and longitude lines being represented by border lines as shown
 - Denotes one inch spaces on border line of original tracing