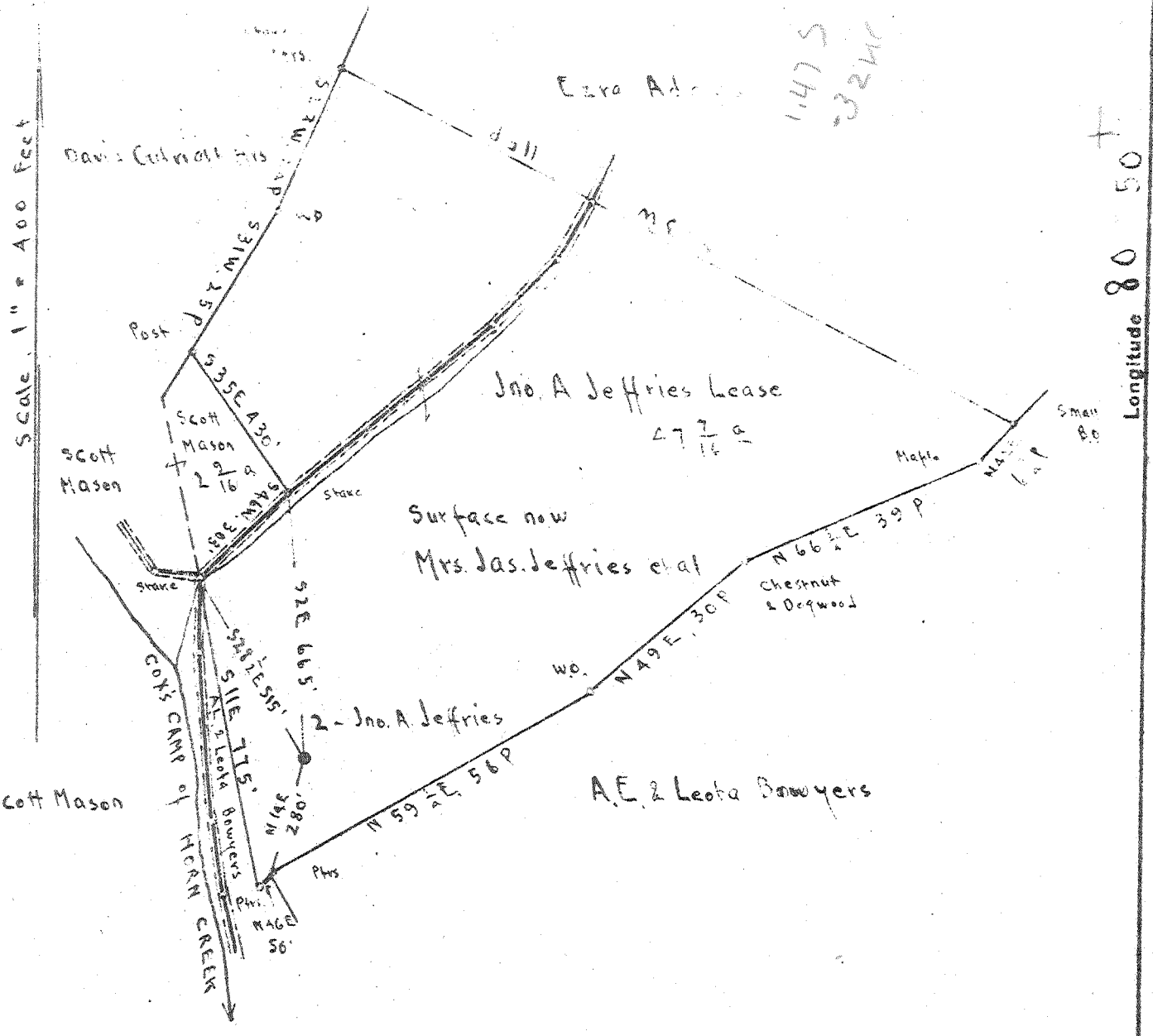


Latitude 39 5'



Surface: Mrs. Jas. Jeffries et al.  
 Address Mrs. Jas. Jeffries, Clarksburg, W. Va.

There is no Commercial Coal.

New Location   
 Drill Deeper   
 Abandonment

Map 16

S 27 W 13

Company The Tri-State Pipe Co.  
 Address Bellaire, Ohio  
 Farm Jno. A. Jeffries  
 Acreage 47 Lease No. \_\_\_\_\_  
 Well (Farm) No. 2 Serial No. \_\_\_\_\_  
 Elevation (Spirit Level) Floor = 1003.90  
 Ground = 1001.40  
 Quadrangle HOLBROOK  
 County Gilmer District Troy  
 Engineer E. C. Tabler  
 Engineer's Registration No. \_\_\_\_\_  
 File No. \_\_\_\_\_ Drawing No. \_\_\_\_\_  
 Date May 13<sup>th</sup> 1948 Scale 1" = 400 Feet.

STATE OF WEST VIRGINIA  
 DEPARTMENT OF MINES  
 OIL AND GAS DIVISION  
 CHARLESTON

WELL LOCATION MAP  
 FILE NO. GIL-270-A

+ Denotes location of well on United States Topographic Maps, scale 1 to 62,500. latitude and longitude lines being represented by border lines as shown.  
 - Denotes one inch spaces on border line of original tracing.



STATE OF WEST VIRGINIA  
DEPARTMENT OF MINES  
OIL AND GAS DIVISION

436

WELL RECORD

Permit No. 270-A Oil or Gas Well \_\_\_\_\_ (KIND)

Company The Tri-State Pipe Co.  
 Address Bellaire, O.  
 Farm J. A. Jeffries Acres 1/2 of 48  
 Location (waters) \_\_\_\_\_  
 Well No. 2 Elev. 1003.90  
 District Troy County Gilmer  
 The surface of tract is owned in fee by Mrs. Jas. Jeffries,  
 Address Clarksburg, W. Va.  
 Mineral rights are owned by \_\_\_\_\_  
 Address \_\_\_\_\_  
 Drilling commenced \_\_\_\_\_  
 Drilling completed 3/11/1920  
 Date Shot 3/16/20 From \_\_\_\_\_ To \_\_\_\_\_  
 With 4/18/25  
 Open Flow \_\_\_\_\_ /10ths Water in \_\_\_\_\_ Inch  
 \_\_\_\_\_ /10ths Merc. in \_\_\_\_\_ Inch  
 Volume \_\_\_\_\_ Cu. Ft.  
 Rock Pressure \_\_\_\_\_ lbs. \_\_\_\_\_ hrs.  
 Oil \_\_\_\_\_ bbls., 1st 24 hrs.  
 Fresh water \_\_\_\_\_ feet \_\_\_\_\_ feet  
 Salt water \_\_\_\_\_ feet \_\_\_\_\_ feet

Casing and Tubing	Used in Drilling	Left in Well	Packers
16			Kind of Packer
13			No data
10 total	269	Not in evidence at top	Size of hole
8 1/4	750		Depth set
6%	1850		
5 3/16			Perf. top
3			Perf. bottom
2			Perf. top
Liners Used			Perf. bottom

CASING CEMENTED \_\_\_\_\_ SIZE \_\_\_\_\_ No. Ft. \_\_\_\_\_ Date \_\_\_\_\_  
 COAL WAS ENCOUNTERED AT \_\_\_\_\_ FEET \_\_\_\_\_ INCHES  
 \_\_\_\_\_ FEET \_\_\_\_\_ INCHES FEET \_\_\_\_\_ INCHES  
 \_\_\_\_\_ FEET \_\_\_\_\_ INCHES FEET \_\_\_\_\_ INCHES

Formation	Color	Hard or Soft	Top	Bottom	Oil, Gas or Water	Depth Found	Remarks
Pgh Coal			660	665			
Little Dunkard			730	765			
Big Dunkard			870	895			
Gas Sand			1230	1296			
1st, Salt			1325	1530			
Gas			1484				
2nd, Salt			1590	1700			
Red Rock			1710	1810			
Big Line			1822	1876			
Big Injun			1876	1985			
Gas			1897				
Squaw			2075	2220			
Water			2105				
Oil			2105				
Gantz			2270				
Water			2280				
Oil			2280	2288			

